



CURRENT STATUS OF CONFIRMED CASES



73



ACT	NSW	NT	QLD	SA	TAS	VIC	WA
5	26	0	0	0	0	42	0

536



ACT	NSW	NT	QLD	SA	TAS	VIC	WA
6	174	52	5	0	0	299	0

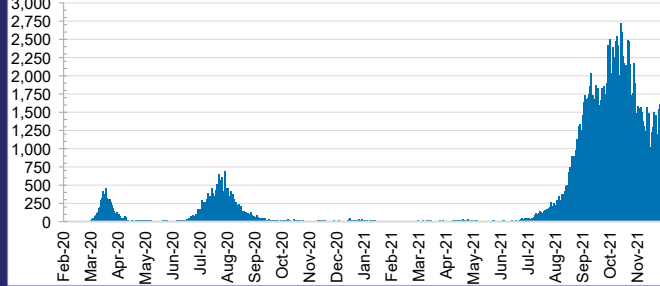
47,518,365



0.4% POSITIVE

ACT	NSW	NT	QLD
630,098	21,627,990	504,614	4,891,912
POSITIVE	POSITIVE	POSITIVE	POSITIVE
0.3%	0.4%	0.1%	0.0%
SA	TAS	VIC	WA
2,535,504	409,081	14,978,719	1,940,447
POSITIVE	POSITIVE	POSITIVE	POSITIVE
0.0%	0.1%	0.8%	0.1%

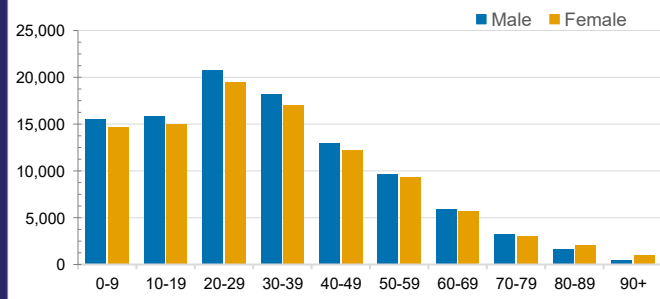
DAILY NUMBER OF REPORTED CASES



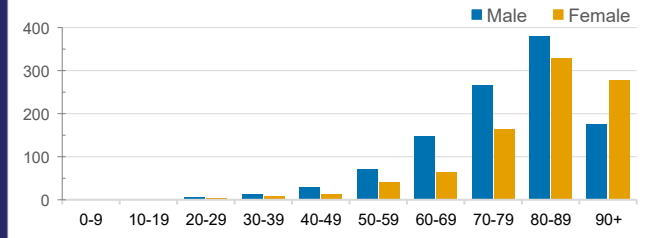
CASES IN AGED CARE SERVICES

Confirmed Cases	Australia	ACT	NSW	NT	QLD	SA	TAS	VIC	WA
Residential Care Recipients	3387 [1755] (867)	19 [8] (7)	495 [122] (99)	0	1 (1)	0	1 (1)	2871 [1625] (759)	0
In Home Care Recipients	122 [76] (10)	0	34 [15] (2)	0	8 [8]	1 [1]	5 [3] (2)	73 [49] (5)	1 (1)
Cases in care recipients [recovered] (deaths)									

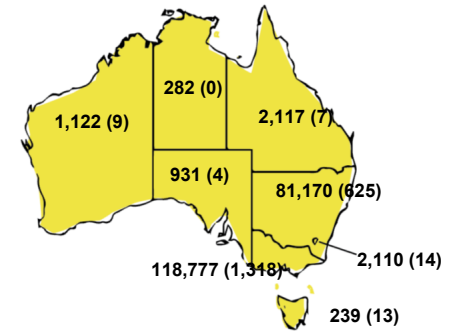
CASES BY AGE GROUP AND SEX



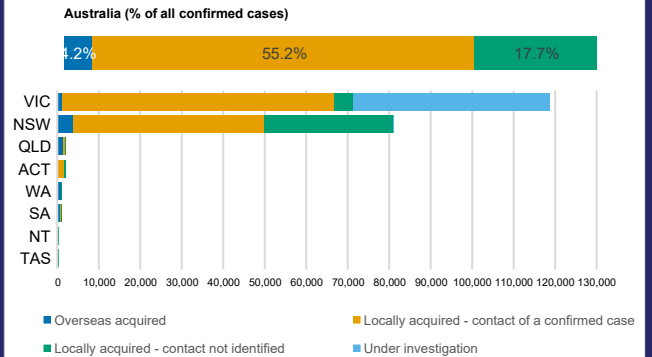
DEATHS BY AGE GROUP AND SEX



CASES (DEATHS) BY STATE AND TERRITORIES



CASES BY SOURCE OF INFECTION



PUBLIC HEALTH RESPONSE MEASURE

