



**CURRENT STATUS OF CONFIRMED CASES**



**77**



ACT	NSW	NT	QLD	SA	TAS	VIC	WA
4	27	0	0	0	0	46	0

**557**



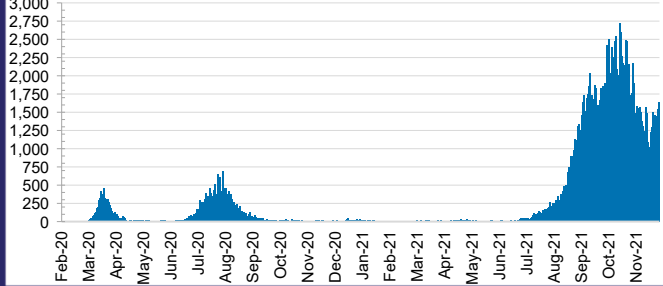
ACT	NSW	NT	QLD	SA	TAS	VIC	WA
7	185	52	5	0	0	308	0

**47,377,526**



ACT	NSW	NT	QLD
627,193	21,565,946	502,292	4,883,676
POSITIVE	POSITIVE	POSITIVE	POSITIVE
0.3%	0.4%	0.1%	0.0%
SA	TAS	VIC	WA
2,527,670	408,875	14,921,427	1,940,447
POSITIVE	POSITIVE	POSITIVE	POSITIVE
0.0%	0.1%	0.8%	0.1%

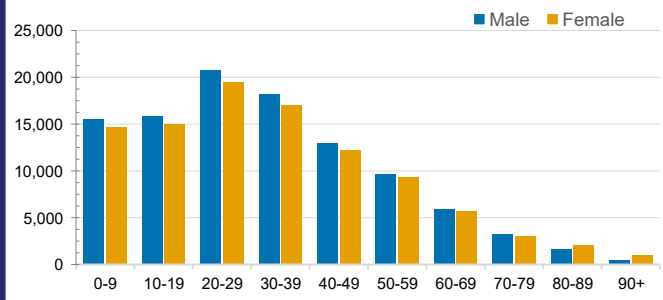
**DAILY NUMBER OF REPORTED CASES**



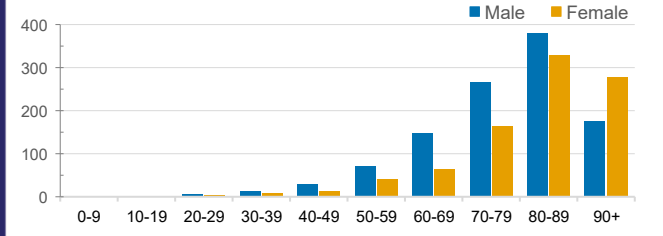
**CASES IN AGED CARE SERVICES**

Confirmed Cases	Australia	ACT	NSW	NT	QLD	SA	TAS	VIC	WA
Residential Care Recipients	3387 [1755] (867)	19 [8] (7)	495 [122] (99)	0	1 (1)	0	1 (1)	2871 [1625] (759)	0
In Home Care Recipients	122 [76] (10)	0	34 [15] (2)	0	8 [8]	1 [1]	5 [3] (2)	73 [49] (5)	1 (1)
Cases in care recipients [recovered] (deaths)									

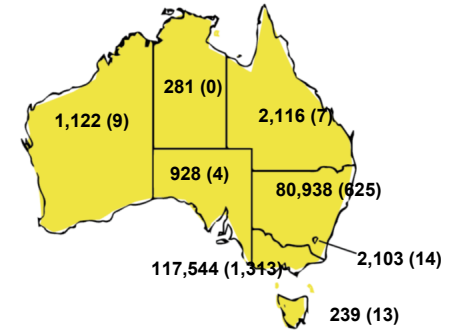
**CASES BY AGE GROUP AND SEX**



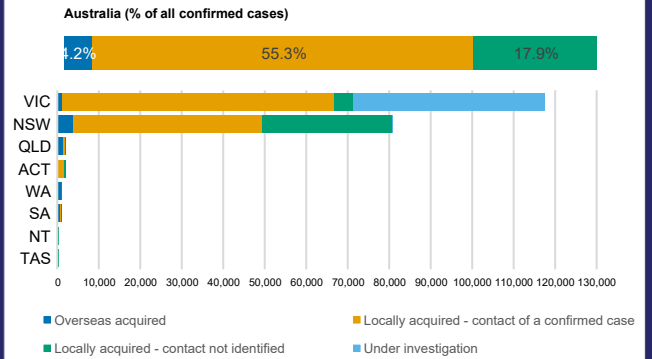
**DEATHS BY AGE GROUP AND SEX**



**CASES (DEATHS) BY STATE AND TERRITORIES**



**CASES BY SOURCE OF INFECTION**



**PUBLIC HEALTH RESPONSE MEASURE**

