



CURRENT STATUS OF CONFIRMED CASES



90



ACT	NSW	NT	QLD	SA	TAS	VIC	WA
3	35	0	0	0	0	52	0

531



ACT	NSW	NT	QLD	SA	TAS	VIC	WA
6	195	43	3	0	0	284	0

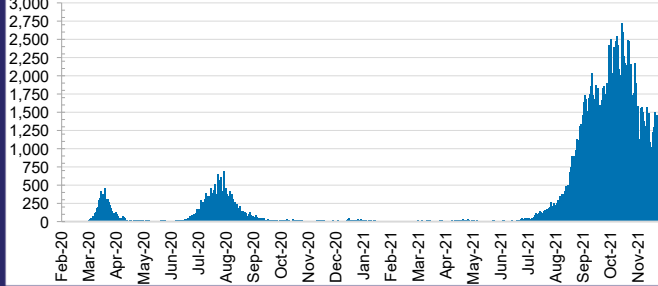
47,022,572



0.4% POSITIVE

ACT	NSW	NT	QLD
623,117	21,417,993	487,871	4,864,902
POSITIVE	POSITIVE	POSITIVE	POSITIVE
0.3%	0.4%	0.1%	0.0%
SA	TAS	VIC	WA
2,512,380	407,501	14,772,660	1,936,148
POSITIVE	POSITIVE	POSITIVE	POSITIVE
0.0%	0.1%	0.8%	0.1%

DAILY NUMBER OF REPORTED CASES

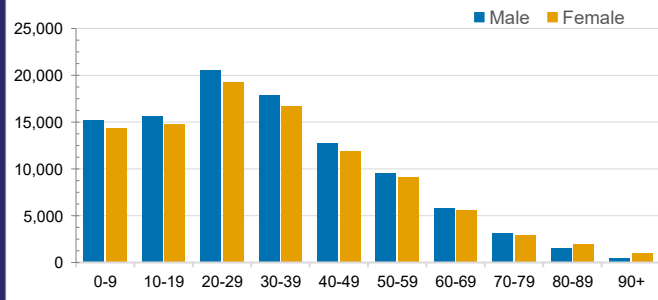


CASES IN AGED CARE SERVICES

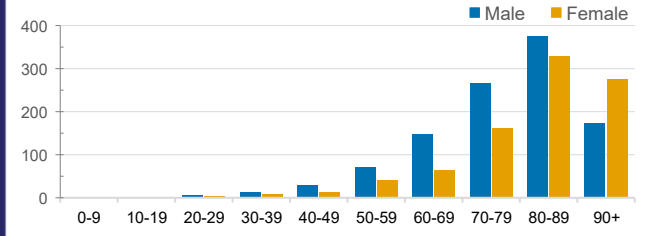
Confirmed Cases	Australia	ACT	NSW	NT	QLD	SA	TAS	VIC	WA
Residential Care Recipients	3353 [1754] (862)	19 [8] (7)	492 [122] (99)	0	1 (1)	0	1 (1)	2840 [1624] (754)	0
In Home Care Recipients	122 [76] (10)	0	34 [15] (2)	0	8 [8]	1 [1]	5 [3] (2)	73 [49] (5)	1 (1)

Cases in care recipients [recovered] (deaths)

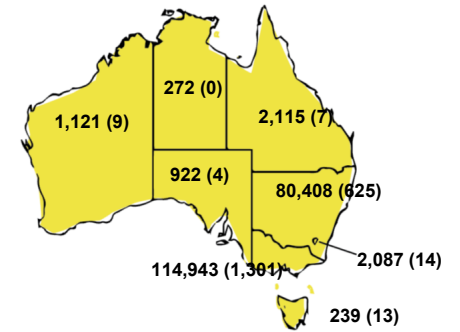
CASES BY AGE GROUP AND SEX



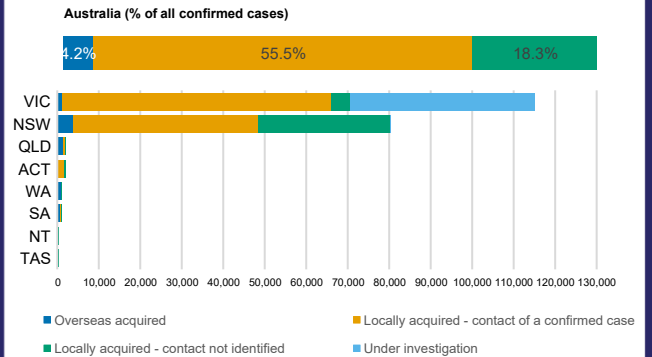
DEATHS BY AGE GROUP AND SEX



CASES (DEATHS) BY STATE AND TERRITORIES



CASES BY SOURCE OF INFECTION



PUBLIC HEALTH RESPONSE MEASURE

