



CURRENT STATUS OF CONFIRMED CASES



81

CURRENT CASES
INTENSIVE CARE UNITS (ICU)

ACT	NSW	NT	QLD	SA	TAS	VIC	WA
3	34	0	0	0	0	44	0

550

CURRENT CASES
ADMITTED TO HOSPITALS

ACT	NSW	NT	QLD	SA	TAS	VIC	WA
6	196	41	4	0	0	303	0

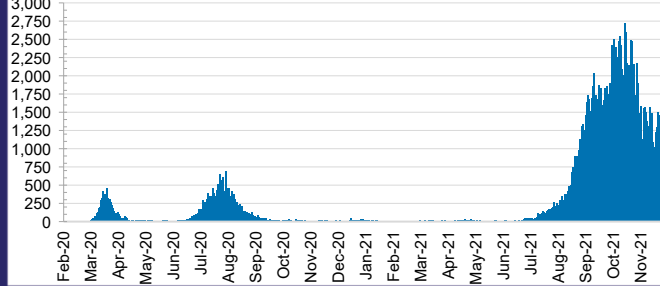
46,837,931

0.4% POSITIVE

TOTAL TESTS
CONDUCTED

ACT	NSW	NT	QLD
617,329	21,337,676	484,352	4,854,428
POSITIVE	POSITIVE	POSITIVE	POSITIVE
0.3%	0.4%	0.1%	0.0%
SA	TAS	VIC	WA
2,505,423	406,748	14,699,906	1,932,069
POSITIVE	POSITIVE	POSITIVE	POSITIVE
0.0%	0.1%	0.8%	0.1%

DAILY NUMBER OF REPORTED CASES

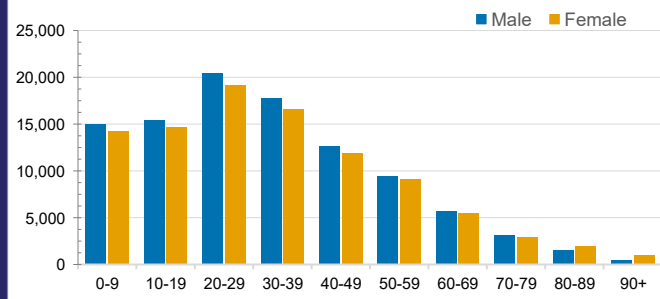


CASES IN AGED CARE SERVICES

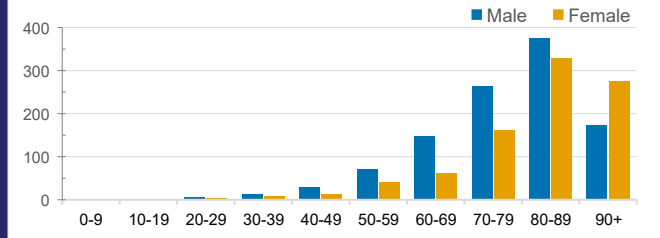
Confirmed Cases	Australia	ACT	NSW	NT	QLD	SA	TAS	VIC	WA
Residential Care Recipients	3322 [1740 (858)]	19 [8] (7)	492 [118] (98)	0	1 (1)	0	1 (1)	2809 [1614] (751)	0
In Home Care Recipients	122 [76] (10)	0	34 [15] (2)	0	8 [8]	1 [1]	5 [3] (2)	73 [49] (5)	1 (1)

Cases in care recipients [recovered] (deaths)

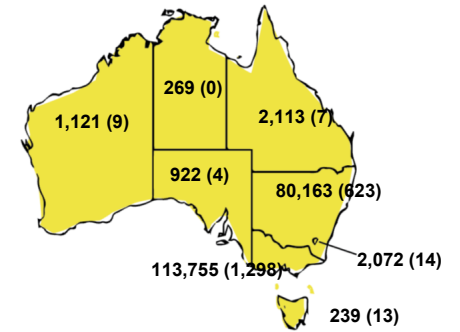
CASES BY AGE GROUP AND SEX



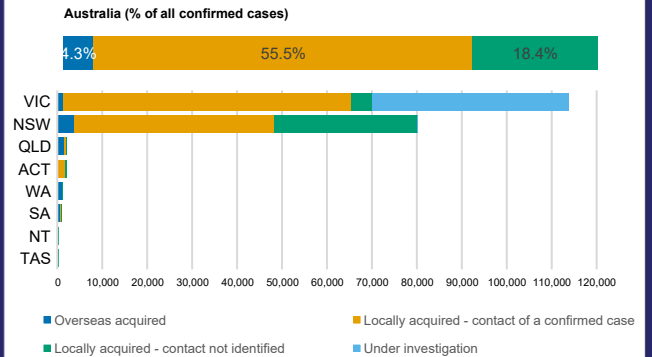
DEATHS BY AGE GROUP AND SEX



CASES (DEATHS) BY STATE AND TERRITORIES



CASES BY SOURCE OF INFECTION



PUBLIC HEALTH RESPONSE MEASURE

