



**CURRENT STATUS OF CONFIRMED CASES**



**203**



ACT	NSW	NT	QLD	SA	TAS	VIC	WA
4	72	0	0	0	0	127	0

**1,018**



ACT	NSW	NT	QLD	SA	TAS	VIC	WA
7	333	0	11	0	0	667	0

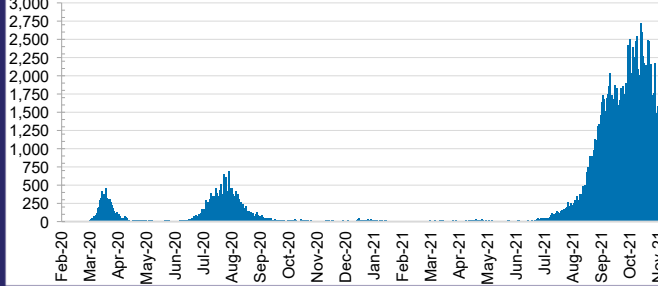
**43,634,338**



**0.4% POSITIVE**

ACT	NSW	NT	QLD
560,407	19,844,697	436,960	4,681,980
POSITIVE	POSITIVE	POSITIVE	POSITIVE
0.3%	0.4%	0.1%	0.0%
SA	TAS	VIC	WA
2,414,307	392,361	13,431,418	1,872,208
POSITIVE	POSITIVE	POSITIVE	POSITIVE
0.0%	0.1%	0.7%	0.1%

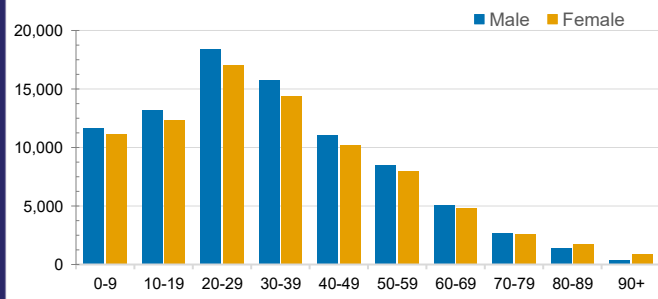
**DAILY NUMBER OF REPORTED CASES**



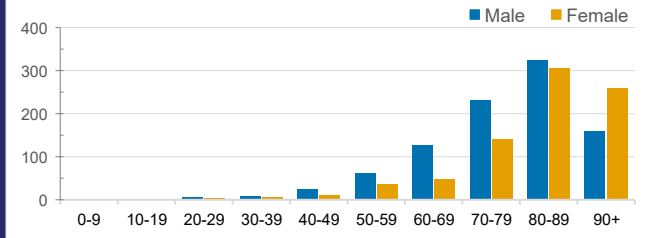
**CASES IN AGED CARE SERVICES**

Confirmed Cases	Australia	ACT	NSW	NT	QLD	SA	TAS	VIC	WA
Residential Care Recipients	3004 [1487] (810)	15 [8] (7)	483 [89] (89)	0	1 (1)	0	1 (1)	2504 [1390] (712)	0
In Home Care Recipients	117 [75] (10)	0	34 [15] (2)	0	8 [8]	1 [1]	5 [3] (2)	68 [48] (5)	1 (1)
Cases in care recipients [recovered] (deaths)									

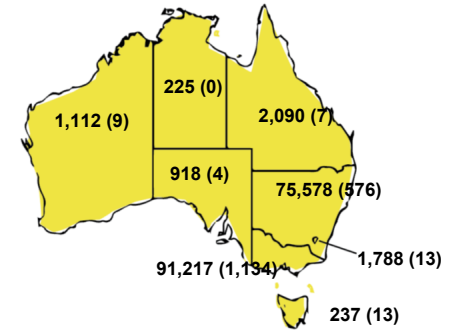
**CASES BY AGE GROUP AND SEX**



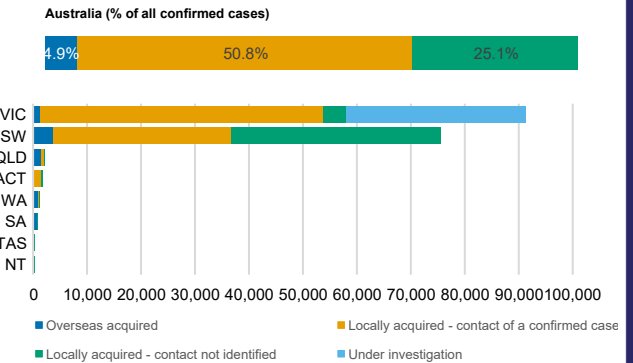
**DEATHS BY AGE GROUP AND SEX**



**CASES (DEATHS) BY STATE AND TERRITORIES**



**CASES BY SOURCE OF INFECTION**



**PUBLIC HEALTH RESPONSE MEASURE**

