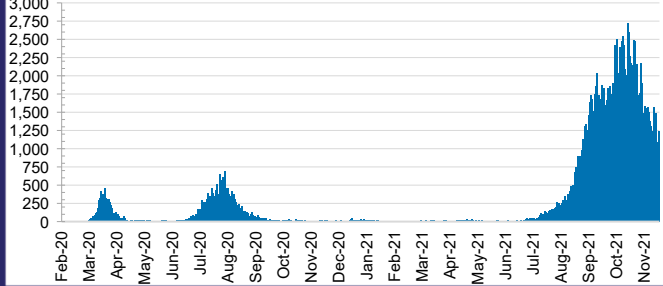




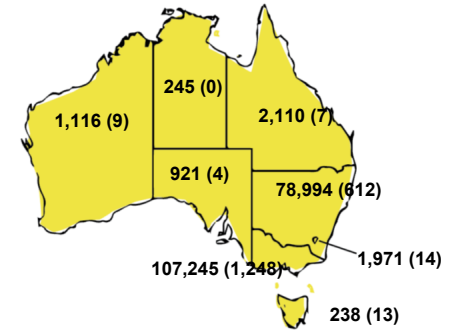
CURRENT STATUS OF CONFIRMED CASES

192,840 Total cases
1,907 Total deaths
17,335 Active cases

DAILY NUMBER OF REPORTED CASES



CASES (DEATHS) BY STATE AND TERRITORIES



91

**CURRENT CASES
INTENSIVE CARE UNITS (ICU)**



ACT	NSW	NT	QLD	SA	TAS	VIC	WA
0	33	0	0	0	0	58	0

598

**CURRENT CASES
ADMITTED TO HOSPITALS**



ACT	NSW	NT	QLD	SA	TAS	VIC	WA
3	207	19	12	0	0	357	0

45,969,170

0.4% POSITIVE

**TOTAL TESTS
CONDUCTED**

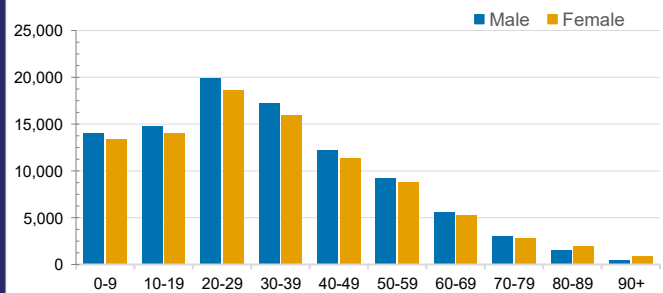


ACT	NSW	NT	QLD
595,295	20,969,662	472,691	4,805,793
POSITIVE	POSITIVE	POSITIVE	POSITIVE
0.3%	0.4%	0.1%	0.0%
SA	TAS	VIC	WA
2,477,676	402,381	14,330,671	1,915,001
POSITIVE	POSITIVE	POSITIVE	POSITIVE
0.0%	0.1%	0.7%	0.1%

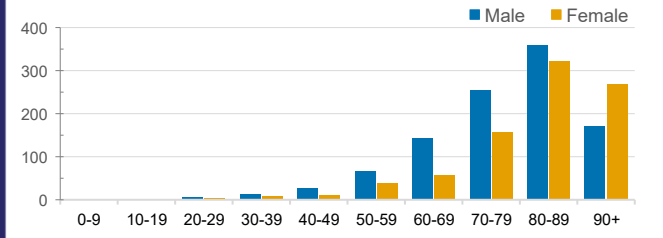
CASES IN AGED CARE SERVICES

Confirmed Cases	Australia	ACT	NSW	NT	QLD	SA	TAS	VIC	WA
Residential Care Recipients	3255 [1647] (846)	17 [8] (7)	492 [118] (98)	0	1 (1)	0	1 (1)	2744 [1521] (739)	0
In Home Care Recipients	122 [76] (10)	0	34 [15] (2)	0	8 [8]	1 [1]	5 [3] (2)	73 [49] (5)	1 (1)
Cases in care recipients [recovered] (deaths)									

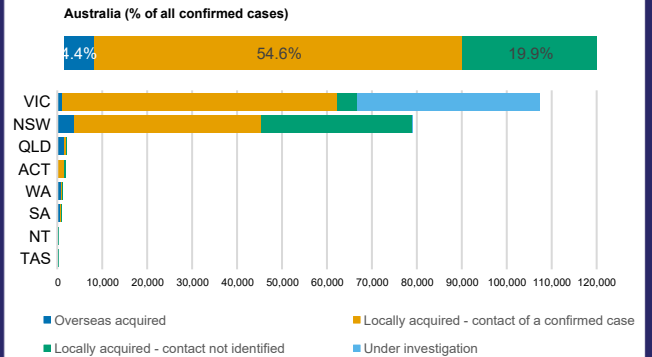
CASES BY AGE GROUP AND SEX



DEATHS BY AGE GROUP AND SEX



CASES BY SOURCE OF INFECTION



PUBLIC HEALTH RESPONSE MEASURE

