



CURRENT STATUS OF CONFIRMED CASES



105



ACT	NSW	NT	QLD	SA	TAS	VIC	WA
1	32	0	0	0	0	72	0

632



ACT	NSW	NT	QLD	SA	TAS	VIC	WA
4	210	11	13	0	0	394	0

45,784,624

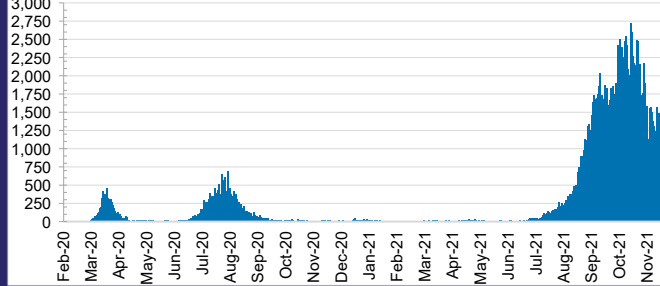


0.4% POSITIVE

**TOTAL TESTS
CONDUCTED**

ACT	NSW	NT	QLD
592,931	20,881,558	470,580	4,794,936
POSITIVE	POSITIVE	POSITIVE	POSITIVE
0.3%	0.4%	0.1%	0.0%
SA	TAS	VIC	WA
2,472,802	401,435	14,258,661	1,911,721
POSITIVE	POSITIVE	POSITIVE	POSITIVE
0.0%	0.1%	0.7%	0.1%

DAILY NUMBER OF REPORTED CASES

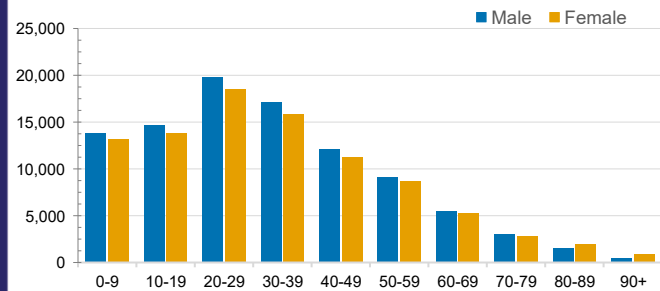


CASES IN AGED CARE SERVICES

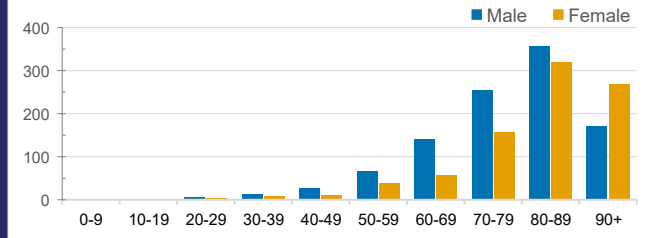
Confirmed Cases	Australia	ACT	NSW	NT	QLD	SA	TAS	VIC	WA
Residential Care Recipients	3230 [1618] (845)	17 [8] (7)	492 [118] (98)	0	1 (1)	0	1 (1)	2719 [1492] (738)	0
In Home Care Recipients	122 [76] (10)	0	34 [15] (2)	0	8 [8]	1 [1]	5 [3] (2)	73 [49] (5)	1 (1)

Cases in care recipients [recovered] (deaths)

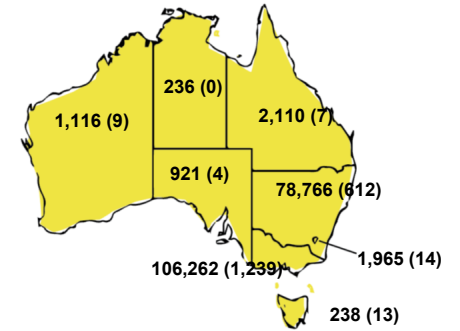
CASES BY AGE GROUP AND SEX



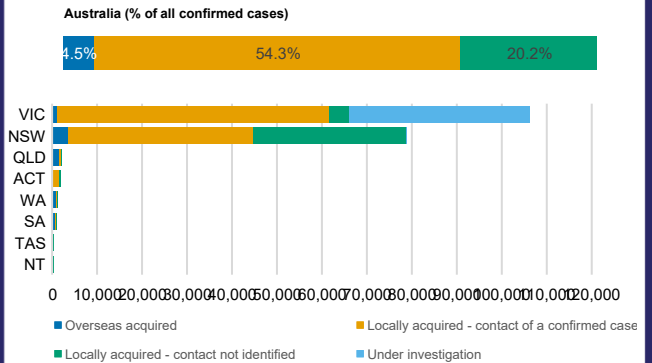
DEATHS BY AGE GROUP AND SEX



CASES (DEATHS) BY STATE AND TERRITORIES



CASES BY SOURCE OF INFECTION



PUBLIC HEALTH RESPONSE MEASURE

