



CURRENT STATUS OF CONFIRMED CASES



110



ACT	NSW	NT	QLD	SA	TAS	VIC	WA
0	32	0	0	0	0	78	0

615



ACT	NSW	NT	QLD	SA	TAS	VIC	WA
1	216	6	14	0	0	378	0

45,640,395

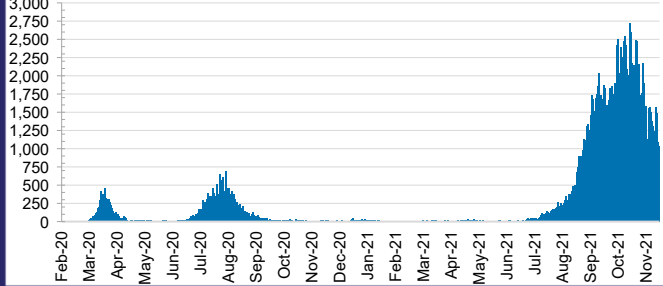


0.4% POSITIVE

**TOTAL TESTS
CONDUCTED**

ACT	NSW	NT	QLD
589,389	20,813,665	468,326	4,786,932
POSITIVE	POSITIVE	POSITIVE	POSITIVE
0.3%	0.4%	0.0%	0.0%
SA	TAS	VIC	WA
2,468,056	400,555	14,205,134	1,908,338
POSITIVE	POSITIVE	POSITIVE	POSITIVE
0.0%	0.1%	0.7%	0.1%

DAILY NUMBER OF REPORTED CASES

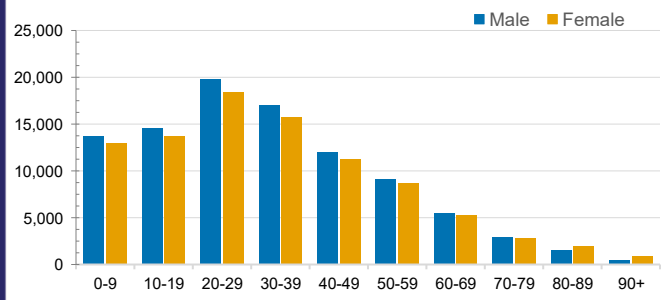


CASES IN AGED CARE SERVICES

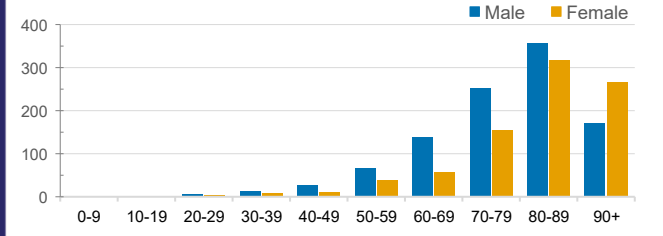
Confirmed Cases	Australia	ACT	NSW	NT	QLD	SA	TAS	VIC	WA
Residential Care Recipients	3205 [1611] (843)	16 [8] (7)	491 [118] (97)	0	1 (1)	0	1 (1)	2696 [1485] (737)	0
In Home Care Recipients	122 [76] (10)	0	34 [15] (2)	0	8 [8]	1 [1]	5 [3] (2)	73 [49] (5)	1 (1)

Cases in care recipients [recovered] (deaths)

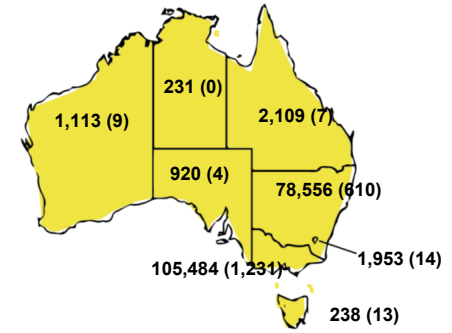
CASES BY AGE GROUP AND SEX



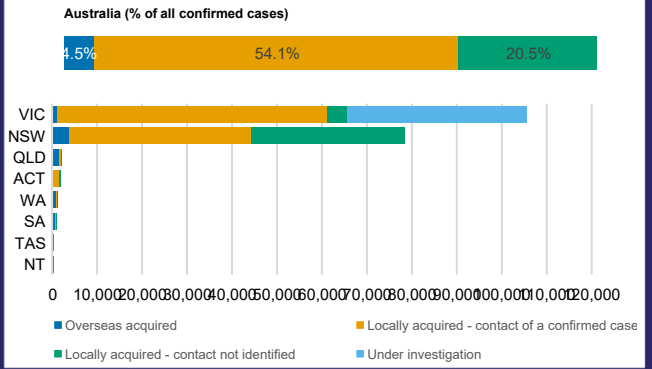
DEATHS BY AGE GROUP AND SEX



CASES (DEATHS) BY STATE AND TERRITORIES



CASES BY SOURCE OF INFECTION



PUBLIC HEALTH RESPONSE MEASURE

