



**CURRENT STATUS OF CONFIRMED CASES**



**107**



ACT	NSW	NT	QLD	SA	TAS	VIC	WA
0	32	0	0	0	0	75	0

**638**



ACT	NSW	NT	QLD	SA	TAS	VIC	WA
0	224	6	14	0	0	394	0

**45,520,917**

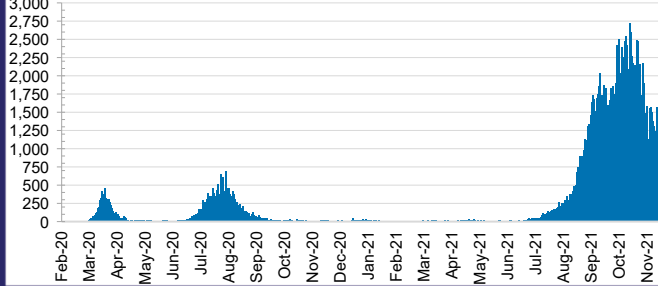


**0.4% POSITIVE**

**TOTAL TESTS  
CONDUCTED**

ACT	NSW	NT	QLD
587,760	20,763,212	467,216	4,781,296
POSITIVE	POSITIVE	POSITIVE	POSITIVE
0.3%	0.4%	0.0%	0.0%
SA	TAS	VIC	WA
2,464,110	400,142	14,157,030	1,900,151
POSITIVE	POSITIVE	POSITIVE	POSITIVE
0.0%	0.1%	0.7%	0.1%

**DAILY NUMBER OF REPORTED CASES**

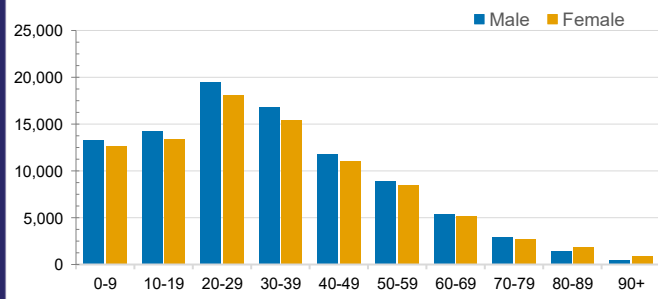


**CASES IN AGED CARE SERVICES**

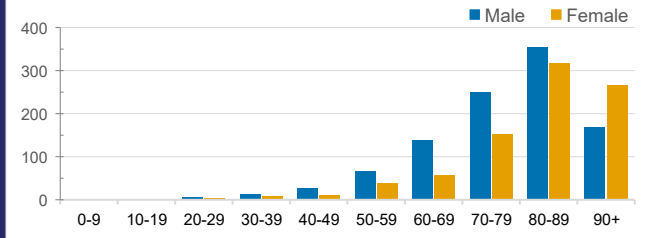
Confirmed Cases	Australia	ACT	NSW	NT	QLD	SA	TAS	VIC	WA
Residential Care Recipients	3175 [1599] (839)	15 [8] (7)	491 [118] (96)	0	1 (1)	0	1 (1)	2667 [1473] (734)	0
In Home Care Recipients	122 [76] (10)	0	34 [15] (2)	0	8 [8]	1 [1]	5 [3] (2)	73 [49] (5)	1 (1)

Cases in care recipients [recovered] (deaths)

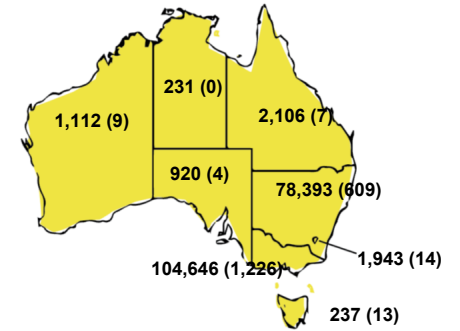
**CASES BY AGE GROUP AND SEX**



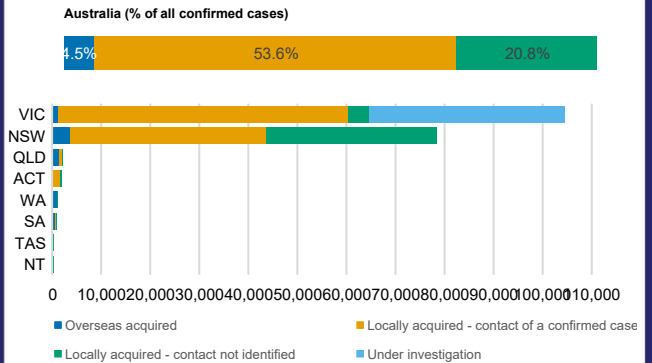
**DEATHS BY AGE GROUP AND SEX**



**CASES (DEATHS) BY STATE AND TERRITORIES**



**CASES BY SOURCE OF INFECTION**



**PUBLIC HEALTH RESPONSE MEASURE**

