



CURRENT STATUS OF CONFIRMED CASES



116

CURRENT CASES
INTENSIVE CARE UNITS (ICU)

ACT	NSW	NT	QLD	SA	TAS	VIC	WA
0	34	0	0	0	0	82	0

681

CURRENT CASES
ADMITTED TO HOSPITALS

ACT	NSW	NT	QLD	SA	TAS	VIC	WA
0	236	5	14	0	0	426	0

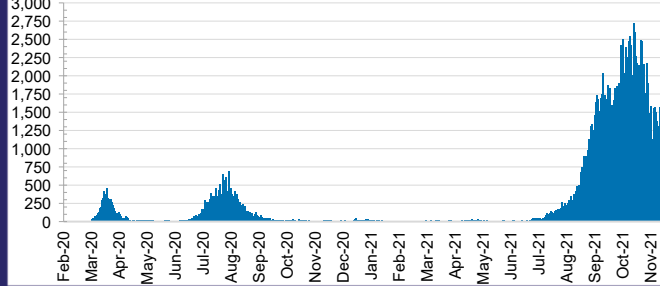
45,248,038

0.4% POSITIVE

TOTAL TESTS
CONDUCTED

ACT	NSW	NT	QLD
584,399	20,646,419	464,644	4,765,508
POSITIVE	POSITIVE	POSITIVE	POSITIVE
0.3%	0.4%	0.0%	0.0%
SA	TAS	VIC	WA
2,455,984	398,939	14,031,994	1,900,151
POSITIVE	POSITIVE	POSITIVE	POSITIVE
0.0%	0.1%	0.7%	0.1%

DAILY NUMBER OF REPORTED CASES

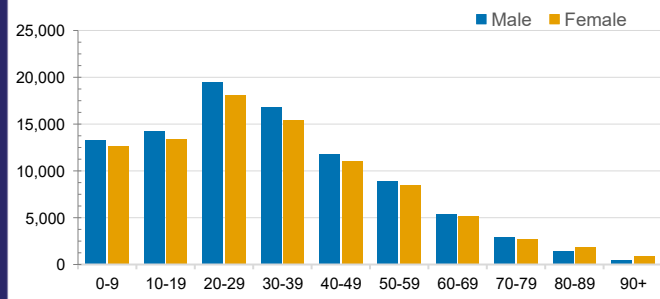


CASES IN AGED CARE SERVICES

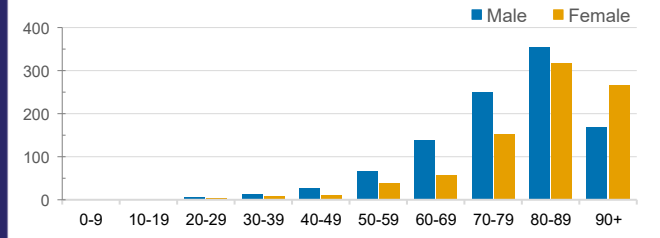
Confirmed Cases	Australia	ACT	NSW	NT	QLD	SA	TAS	VIC	WA
Residential Care Recipients	3175 [1599] (839)	15 [8] (7)	491 [118] (96)	0	1 (1)	0	1 (1)	2667 [1473] (734)	0
In Home Care Recipients	122 [76] (10)	0	34 [15] (2)	0	8 [8]	1 [1]	5 [3] (2)	73 [49] (5)	1 (1)

Cases in care recipients [recovered] (deaths)

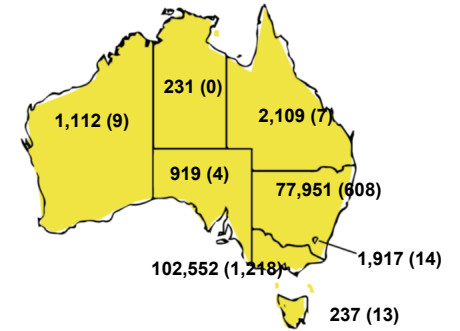
CASES BY AGE GROUP AND SEX



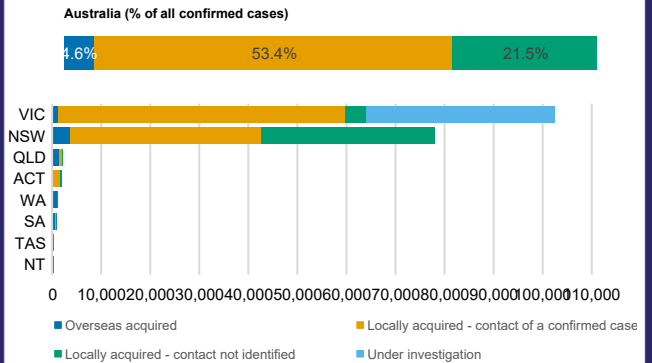
DEATHS BY AGE GROUP AND SEX



CASES (DEATHS) BY STATE AND TERRITORIES



CASES BY SOURCE OF INFECTION



PUBLIC HEALTH RESPONSE MEASURE

