



**CURRENT STATUS OF CONFIRMED CASES**



**125**



ACT	NSW	NT	QLD	SA	TAS	VIC	WA
0	41	0	0	0	0	84	0

**724**



ACT	NSW	NT	QLD	SA	TAS	VIC	WA
0	235	6	12	0	0	471	0

**44,910,694**

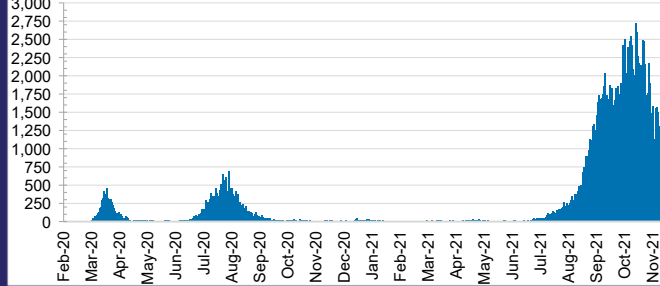


**TOTAL TESTS  
CONDUCTED**

**0.4% POSITIVE**

ACT	NSW	NT	QLD
575,434	20,492,291	459,081	4,747,091
POSITIVE	POSITIVE	POSITIVE	POSITIVE
0.3%	0.4%	0.1%	0.0%
SA	TAS	VIC	WA
2,446,952	397,472	13,896,964	1,895,409
POSITIVE	POSITIVE	POSITIVE	POSITIVE
0.0%	0.1%	0.7%	0.1%

**DAILY NUMBER OF REPORTED CASES**

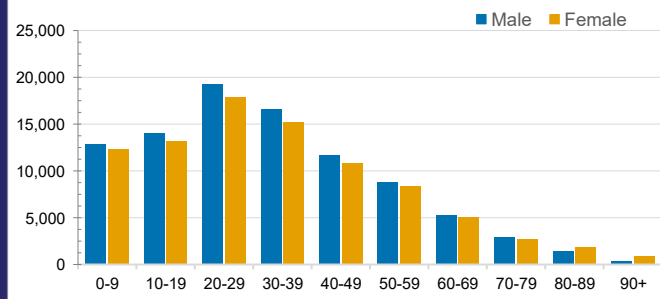


**CASES IN AGED CARE SERVICES**

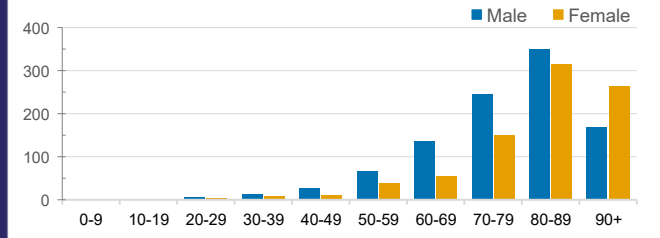
Confirmed Cases	Australia	ACT	NSW	NT	QLD	SA	TAS	VIC	WA
Residential Care Recipients	3140 [1594] (836)	15 [8] (7)	484 [118] (96)	0	1 (1)	0	1 (1)	2639 [1468] (731)	0
In Home Care Recipients	122 [76] (10)	0	34 [15] (2)	0	8 [8]	1 [1]	5 [3] (2)	73 [49] (5)	1 (1)

Cases in care recipients [recovered] (deaths)

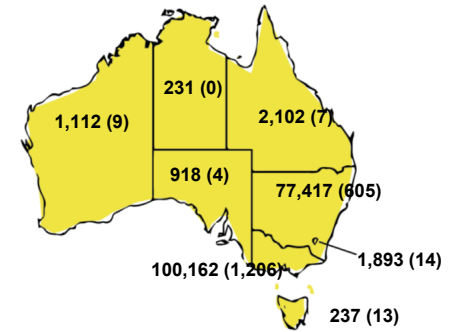
**CASES BY AGE GROUP AND SEX**



**DEATHS BY AGE GROUP AND SEX**

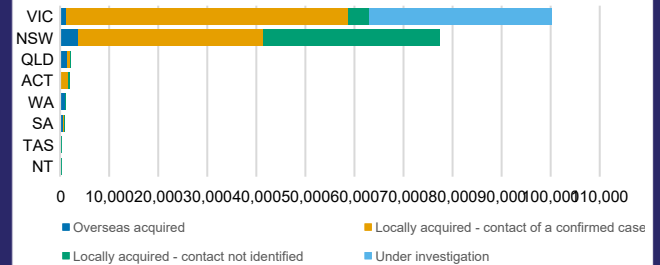


**CASES (DEATHS) BY STATE AND TERRITORIES**



**CASES BY SOURCE OF INFECTION**

Australia (% of all confirmed cases)



**PUBLIC HEALTH RESPONSE MEASURE**

Proportion of total cases under investigation

