



CURRENT STATUS OF CONFIRMED CASES



216

CURRENT CASES
INTENSIVE CARE UNITS (ICU)



ACT	NSW	NT	QLD	SA	TAS	VIC	WA
3	77	0	0	0	0	136	0

1,068

CURRENT CASES
ADMITTED TO HOSPITALS



ACT	NSW	NT	QLD	SA	TAS	VIC	WA
8	349	1	11	0	0	699	0

43,509,270

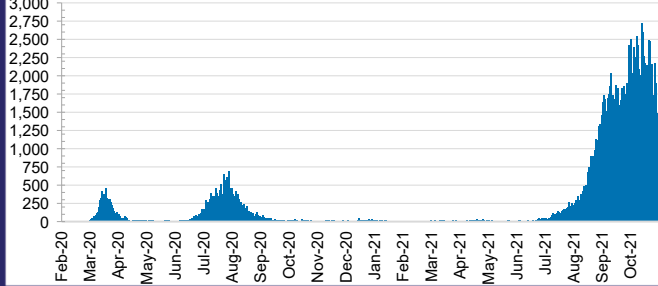
0.4% POSITIVE

TOTAL TESTS
CONDUCTED



ACT	NSW	NT	QLD
558,585	19,785,709	435,267	4,674,794
POSITIVE	POSITIVE	POSITIVE	POSITIVE
0.3%	0.4%	0.1%	0.0%
SA	TAS	VIC	WA
2,410,786	391,731	13,383,416	1,868,982
POSITIVE	POSITIVE	POSITIVE	POSITIVE
0.0%	0.1%	0.7%	0.1%

DAILY NUMBER OF REPORTED CASES

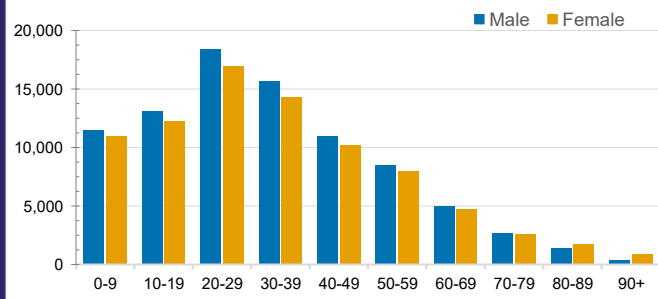


CASES IN AGED CARE SERVICES

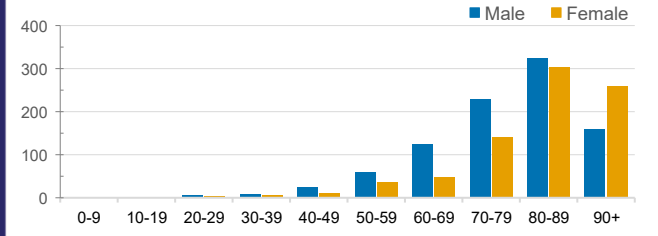
Confirmed Cases	Australia	ACT	NSW	NT	QLD	SA	TAS	VIC	WA
Residential Care Recipients	2990 [1487] (806)	15 [8] (7)	483 [89] (88)	0	1 (1)	0	1 (1)	2490 [1390] (709)	0
In Home Care Recipients	117 [75] (10)	0	34 [15] (2)	0	8 [8]	1 [1]	5 [3] (2)	68 [48] (5)	1 (1)

Cases in care recipients [recovered] (deaths)

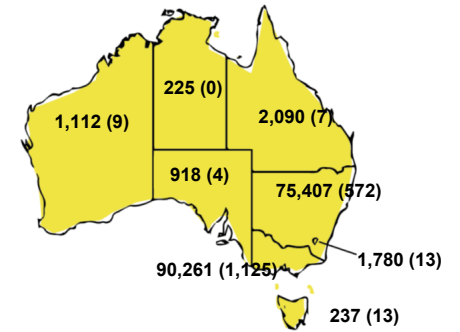
CASES BY AGE GROUP AND SEX



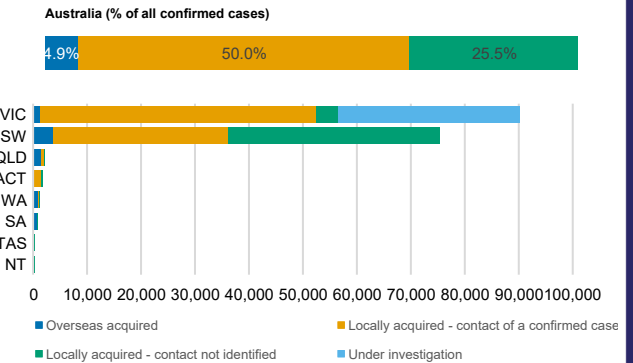
DEATHS BY AGE GROUP AND SEX



CASES (DEATHS) BY STATE AND TERRITORIES



CASES BY SOURCE OF INFECTION



PUBLIC HEALTH RESPONSE MEASURE

