



Australian Government
Operation COVID Shield

COVID-19 Vaccine Roll-out

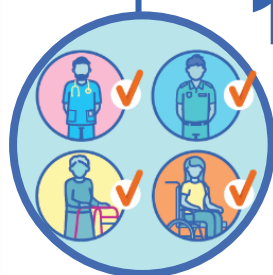
07 October 2021

Data as at:
06 Oct 2021

Total vaccine doses



29,642,430 total vaccine
doses administered nationally as at 06 October
+336,559 recorded in the last 24 hours



16,698,532

people have had at least one
dose

81.0%

of people over the age of 16
have had at least one dose



12,228,295

people are fully vaccinated

59.3%

of people over the age of 16 are
fully vaccinated

NSW
10,699,666
(+119,982 daily
increase)

VIC
7,844,385
(+96,248 daily
increase)

QLD
5,081,978
(+57,406 daily
increase)

WA
2,563,237
(+26,928 daily
increase)

TAS
629,728
(+5,337 daily
increase)

SA
1,808,113
(+20,420 daily
increase)

ACT
734,989
(+8,382 daily
increase)

NT
280,334
(+1,856 daily
increase)

*Administration state breakdown indicates state in which a vaccine was administered

**Overall dose count includes instances of more than two doses per person in a small number of cases.

Source: Australian Immunisation Register

Data as at:
06 Oct 2021

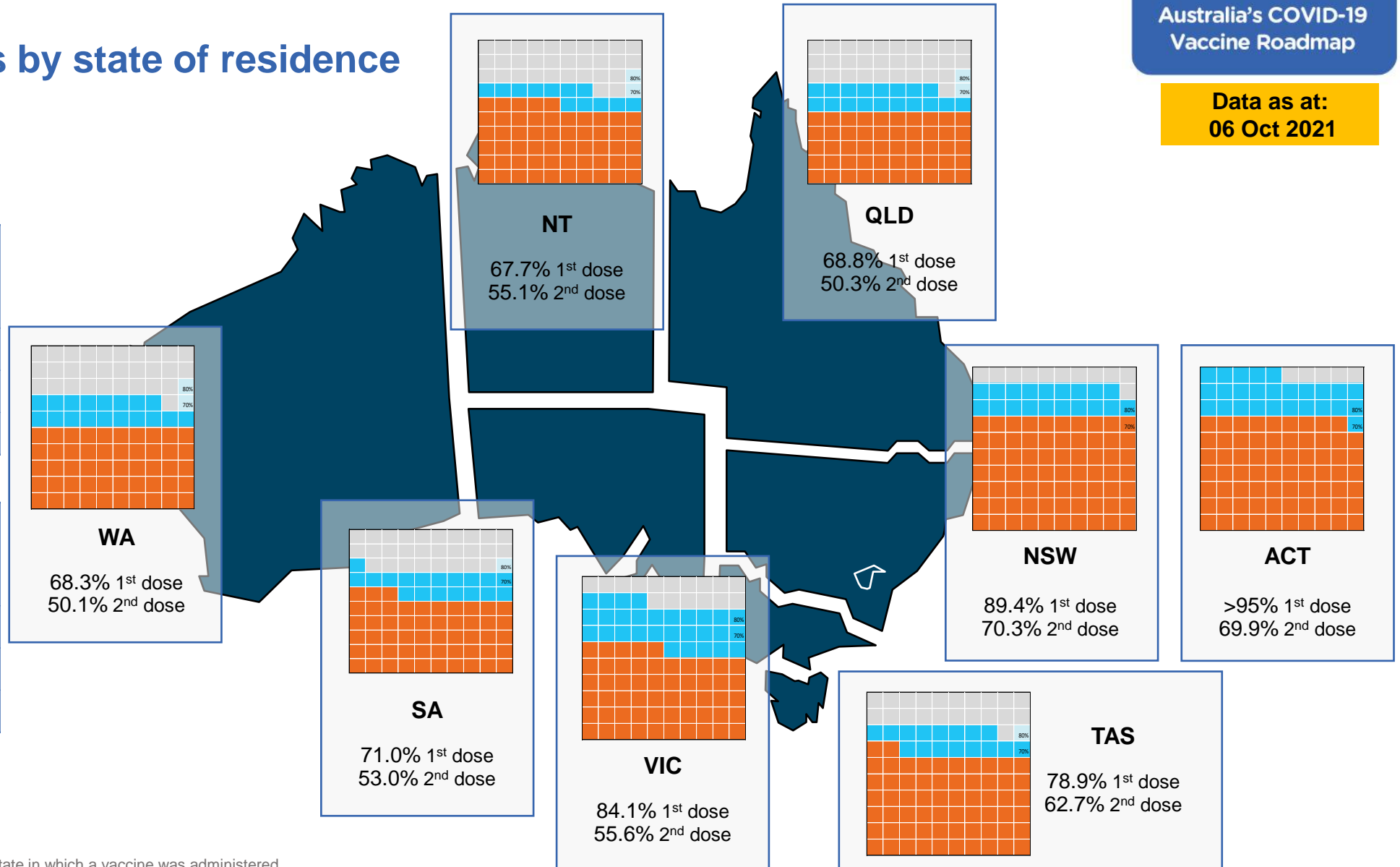
Vaccinations by state of residence

First doses

Age	Today	4 weeks ago	8 weeks ago
16+	81.0%	66.1%	46.8%
50+	90.9%	83.3%	71.6%
70+	>95%	90.9%	83.9%

Fully vaccinated

Age	Today	4 weeks ago	8 weeks ago
16+	59.3%	41.0%	25.1%
50+	74.5%	60.2%	36.3%
70+	81.0%	69.9%	51.4%



*Residential state may differ from the state in which a vaccine was administered

Commonwealth and Jurisdiction vaccine doses administered

Data as at:
06 Oct 2021



29,642,430 total vaccine
doses administered nationally as at 06 October
+ 336,559 recorded in the last 24 hours



12,452,858
doses administered by state
and territory facilities
+ 108,573
recorded in the last 24 hours



17,189,572
doses administered by
commonwealth facilities
+ 227,986
recorded in the last 24 hours

16,157,969 total vaccine doses
administered in primary care settings
1,031,603 total vaccine doses
administered in aged care and disability
settings

NSW	Jurisdictions	Commonwealth
Cumulative	3,701,479	6,998,187
Daily increase	25,311	94,671

VIC	Jurisdictions	Commonwealth
Cumulative	3,726,980	4,117,405
Daily increase	35,512	60,736

QLD	Jurisdictions	Commonwealth
Cumulative	2,067,573	3,014,405
Daily increase	18,442	38,964

WA	Jurisdictions	Commonwealth
Cumulative	1,243,240	1,319,997
Daily increase	11,389	15,539

TAS	Jurisdictions	Commonwealth
Cumulative	348,322	281,406
Daily increase	3,384	1,953

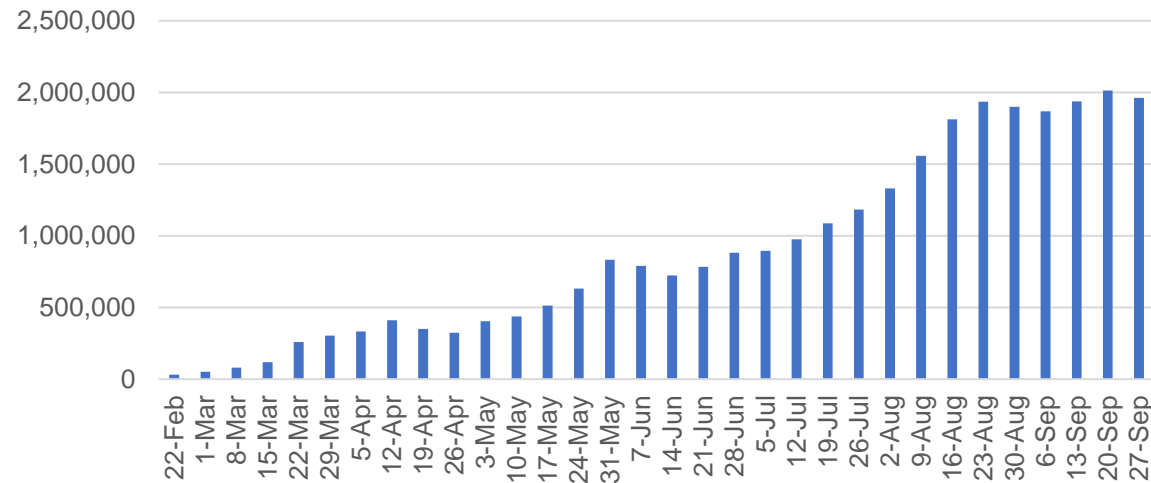
SA	Jurisdictions	Commonwealth
Cumulative	835,433	972,680
Daily increase	9,419	11,001

ACT	Jurisdictions	Commonwealth
Cumulative	360,872	374,117
Daily increase	4,120	4,262

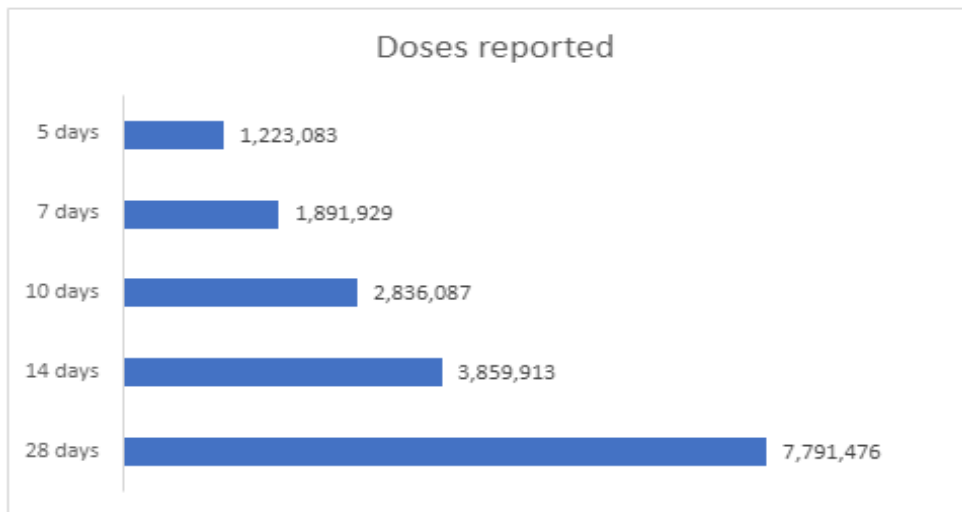
NT	Jurisdictions	Commonwealth
Cumulative	168,959	111,375
Daily increase	996	860

Vaccine milestone charts

Jabs in arms by week



Doses reported

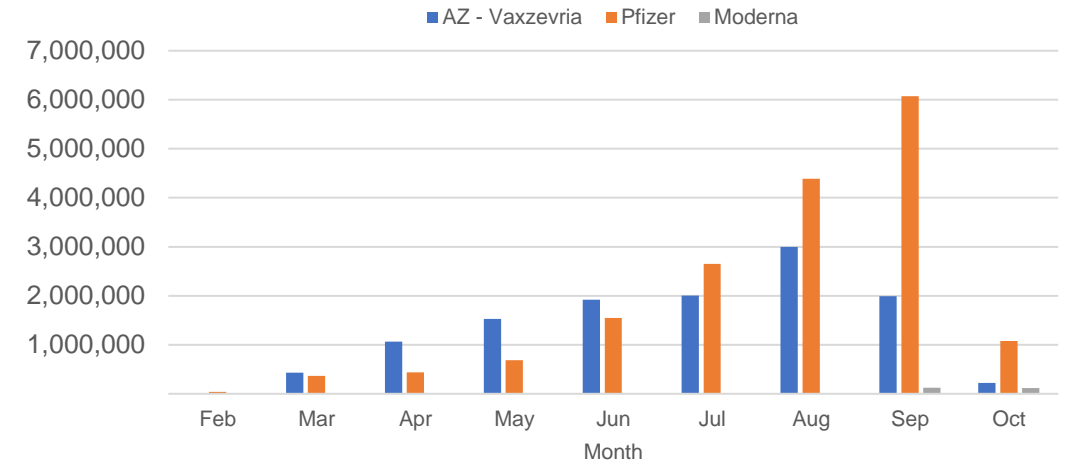


*Sourced from the Australian Immunisation Register.

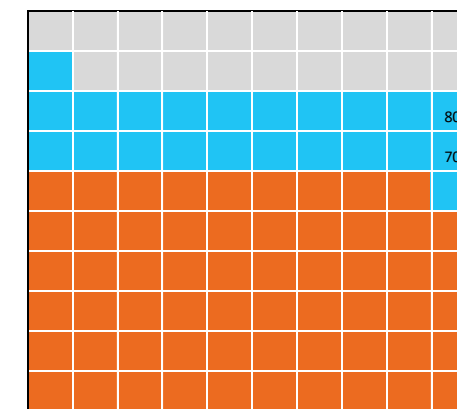
Data as at:
06 Oct 2021

Australia's COVID-19
Vaccine Roadmap

Doses by administration month and vaccine type



Eligible population percentage coverage



1st dose: 81.0% 2nd dose: 59.3%

*Each square represents 1% of the national population. Squares are filled as milestones are achieved.

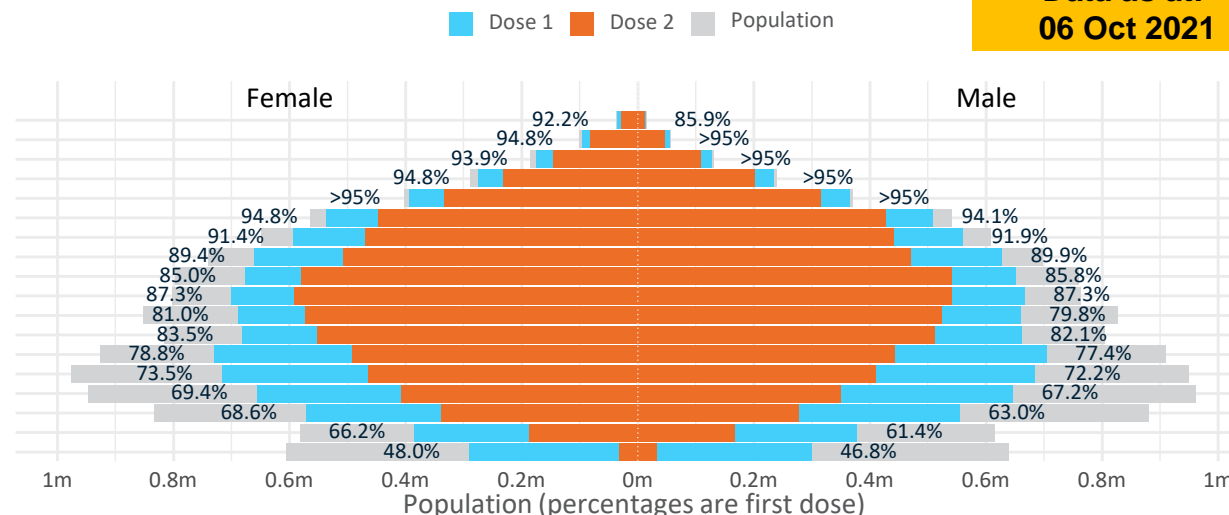
Data as at:
06 Oct 2021

Doses by age and sex

First and second doses by age and sex

	16+	50+	70+	12-15
Dose 1	80.98% (16,698,532 doses / 20,619,959 people)	90.89% (7,953,002 doses / 8,749,703 people)	>95% (2,812,731 doses / 2,934,706 people)	47.38% (589,444 doses / 1,243,990 people)
Dose 2	59.30% (12,228,295 doses / 20,619,959 people)	74.50% (6,518,879 doses / 8,749,703 people)	81.01% (2,377,408 doses / 2,934,706 people)	5.22% (64,967 doses / 1,243,990 people)

Age	Dose 1	Dose 2
95+	47,898 (90.5%)	40,185 (75.9%)
90-94	151,220 (>95%)	127,518 (80.5%)
85-89	301,411 (>95%)	253,924 (80.3%)
80-84	508,307 (>95%)	432,340 (81.8%)
75-79	758,992 (>95%)	648,276 (83.8%)
70-74	1,044,903 (94.6%)	875,165 (79.2%)
65-69	1,154,437 (91.8%)	910,074 (72.3%)
60-64	1,289,459 (89.8%)	979,145 (68.2%)
55-59	1,329,521 (85.5%)	1,120,333 (72.0%)
50-54	1,366,854 (87.4%)	1,131,919 (72.3%)
45-49	1,349,314 (80.5%)	1,095,876 (65.4%)
40-44	1,344,022 (83.0%)	1,065,773 (65.8%)
35-39	1,437,700 (78.3%)	936,997 (51.1%)
30-34	1,408,282 (73.2%)	876,895 (45.6%)
25-29	1,311,885 (68.8%)	762,404 (40.0%)
20-24	1,131,196 (66.1%)	617,092 (36.0%)
16-19	763,131 (63.8%)	354,379 (29.6%)
12-15	589,444 (47.4%)	64,967 (5.2%)



	AUS	ACT	NSW	NT	QLD	SA	TAS	VIC	WA
16 and over - dose 1	16,698,532	328,130	5,870,574	128,965	2,828,531	1,023,129	347,489	4,549,452	1,444,361
16 and over - dose 2	12,228,295	240,341	4,616,948	105,006	2,068,805	763,648	276,143	3,003,995	1,059,449
16 and over - population	20,619,959*	344,037	6,565,651	190,571	4,112,707	1,440,400	440,172	5,407,574	2,114,978
16 and over % with dose 1	80.98%	>95%	89.41%	67.67%	68.78%	71.03%	78.94%	84.13%	68.29%
16 and over % with dose 2	59.30%	69.86%	70.32%	55.10%	50.30%	53.02%	62.74%	55.55%	50.09%
50 and over - dose 1	7,953,002	130,512	2,673,478	48,718	1,494,194	577,057	196,368	2,033,445	750,506
50 and over - dose 2	6,518,879	114,583	2,267,136	41,274	1,192,427	453,459	165,888	1,657,787	593,120
50 and over - population	8,749,703	127,802	2,807,793	62,280	1,758,855	674,384	220,036	2,211,211	885,370
50 and over % with dose 1	90.89%	>95%	>95%	78.22%	84.95%	85.57%	89.24%	91.96%	84.77%
50 and over % with dose 2	74.50%	89.66%	80.74%	66.27%	67.80%	67.24%	75.39%	74.97%	66.99%
70 and over - dose 1	2,812,731	42,467	944,693	10,435	534,897	223,051	73,617	705,513	258,274
70 and over - dose 2	2,377,408	37,776	820,573	8,867	448,310	179,288	62,949	594,465	210,082
70 and over - population	2,934,706	39,946	962,606	12,343	577,767	240,514	77,155	743,519	280,281
70 and over % with dose 1	>95%	>95%	>95%	84.54%	92.58%	92.74%	>95%	94.89%	92.15%
70 and over % with dose 2	81.01%	94.57%	85.24%	71.84%	77.59%	74.54%	81.59%	79.95%	74.95%
12 to 15 - dose 1	589,444	15,894	246,901	4,375	82,129	19,043	6,015	181,506	30,104
12 to 15 - dose 2	64,967	1,130	36,775	1,989	9,469	1,258	1,010	11,269	1,668
12 to 15 - population	1,243,990	19,693	390,330	13,060	270,146	82,747	26,308	308,611	132,869
12 to 15 % with dose 1	47.38%	80.71%	63.25%	33.50%	30.40%	23.01%	22.86%	58.81%	22.66%
12 to 15 % with dose 2	5.22%	5.74%	9.42%	15.23%	3.51%	1.52%	3.84%	3.65%	1.26%

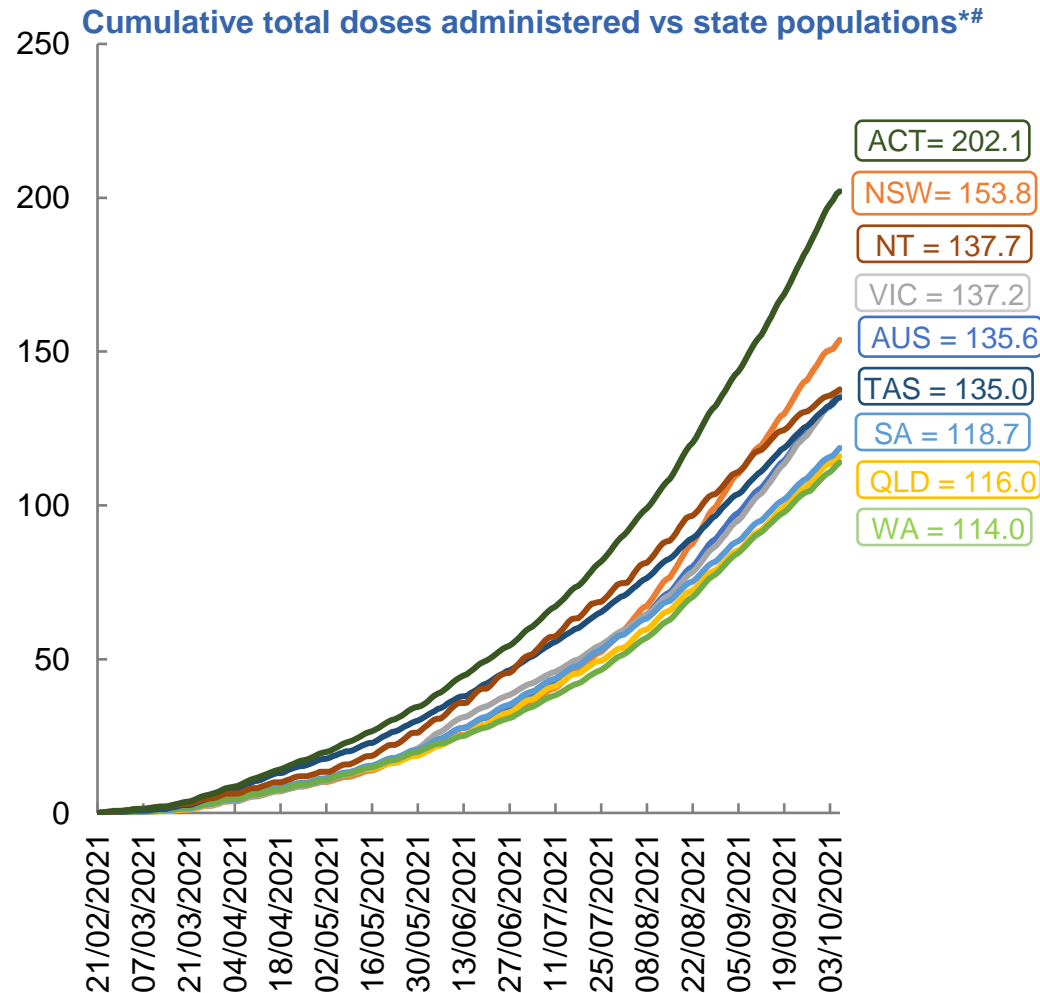
*National population will not equal sum of listed jurisdictions due to a small number of people counted in national population residing in some 'other' territories. Sum of state doses will not add to national total as some records are unable to be geocoded to a State or Territory.

Doses sourced from Australian Immunisation Register, population from ABS ERP June 2020

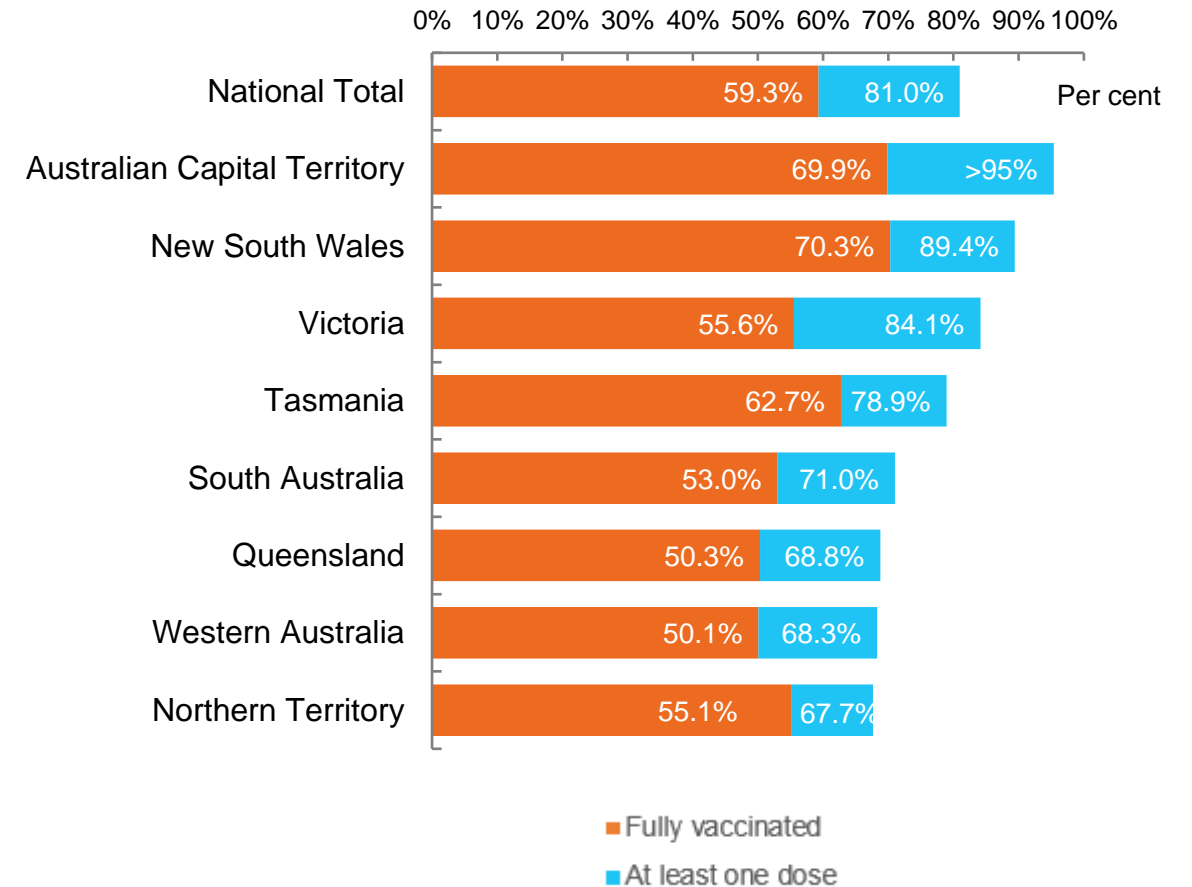
Vaccinations by location

Data as at:
06 Oct 2021

Australia's COVID-19
Vaccine Roadmap



First and Second Doses by state of residence



*Not an indication of percentage vaccinated, numbers will exceed 100 due to multiple doses required per person of the population

State populations adjusted to include 12-15 year olds as total doses includes vaccinations administered to this age group

Aboriginal and Torres Strait Islander peoples

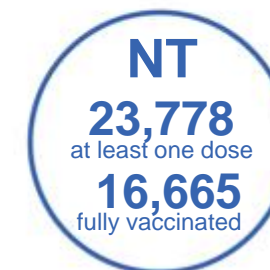
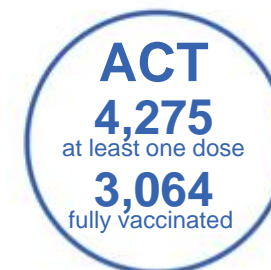
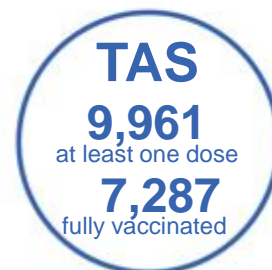
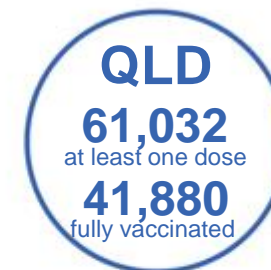
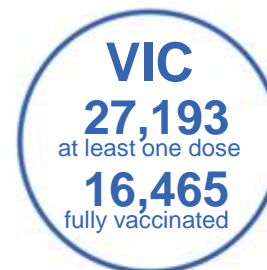
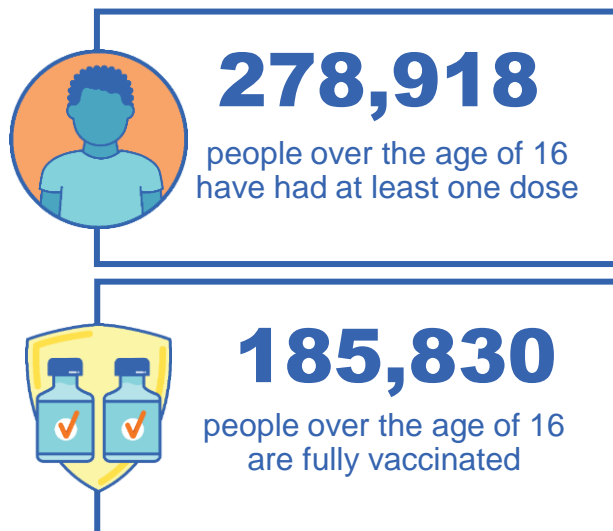
Number of people vaccinated

Data as at:
03 Oct 2021
Updated weekly

Australia's COVID-19
Vaccine Roadmap

167 Aboriginal community controlled health services (ACCHS)

0#	48	26	39	12	3	21	18
ACT	NSW	NT	QLD	SA	TAS	VIC	WA



7,518 people with at least one dose
4,319 people fully vaccinated

residing in other territories or with missing residential information
Source: Australian Immunisation Register

*Identifying as Aboriginal and Torres Strait Islander is optional and the estimated population may be under reported.

**Includes all Aboriginal and Torres Strait Islander peoples who have received a vaccination, not limited to those administered in an ACCHS setting

***Updated weekly.

#ACCHS in the ACT are currently operating as a Commonwealth Vaccine Clinics so not included to avoid double counting

Data as at:
06 Oct 2021

Commonwealth primary care



Primary care vaccine administration sites

5,528	137	167	3,329
GPs	CVCs	ACCHS	Pharmacies



16,157,969 total vaccine doses administered primary care settings as at 06 October
+ 220,562 recorded in the last 24 hours

Primary care vaccinations by provider type

	Doses administered	Daily increase	7 day increase
General Practice* includes other Commonwealth	15,168,133	180,901	939,620
Pharmacy	989,836	39,661	200,240

NSW
6,540,629
(+91,480 daily increase)

VIC
3,914,753
(+58,609 daily increase)

QLD
2,794,868
(+36,203 daily increase)

WA
1,257,864
(+15,155 daily increase)

TAS
270,816
(+2,066 daily increase)

SA
919,840
(+10,980 daily increase)

ACT
274,382
(+3,887 daily increase)

NT
95,537
(+888 daily increase)

89,280 doses administered to persons residing in other territories or with missing residential information

*General practice includes Commonwealth Vaccination Clinics, Aboriginal Community Health Centres, Royal Flying Doctor Service and other Commonwealth vaccination facilities

Source: Australian Immunisation Register

Data as at:
06 Oct 2021

Commonwealth aged care and disability doses administered



1,031,603 (+ 7,424 last 24 hours)

Total vaccine doses administered in aged care and disability facilities as at 06 October

Number of doses administered as part of the Commonwealth aged and disability care rollout

NSW
483,500
(+3,577 daily increase)

VIC
185,850
(+775 daily increase)

QLD
182,226
(+2,560 daily increase)

WA
64,092
(+258 daily increase)

TAS
16,750
(+13 daily increase)

SA
57,452
(+89 daily increase)

ACT
12,141
(+74 daily increase)

NT
5,702
(+13 daily increase)

*Sourced from the Australian Immunisation Register. Includes all persons vaccinated at participating residential aged care, disability and related industry settings.

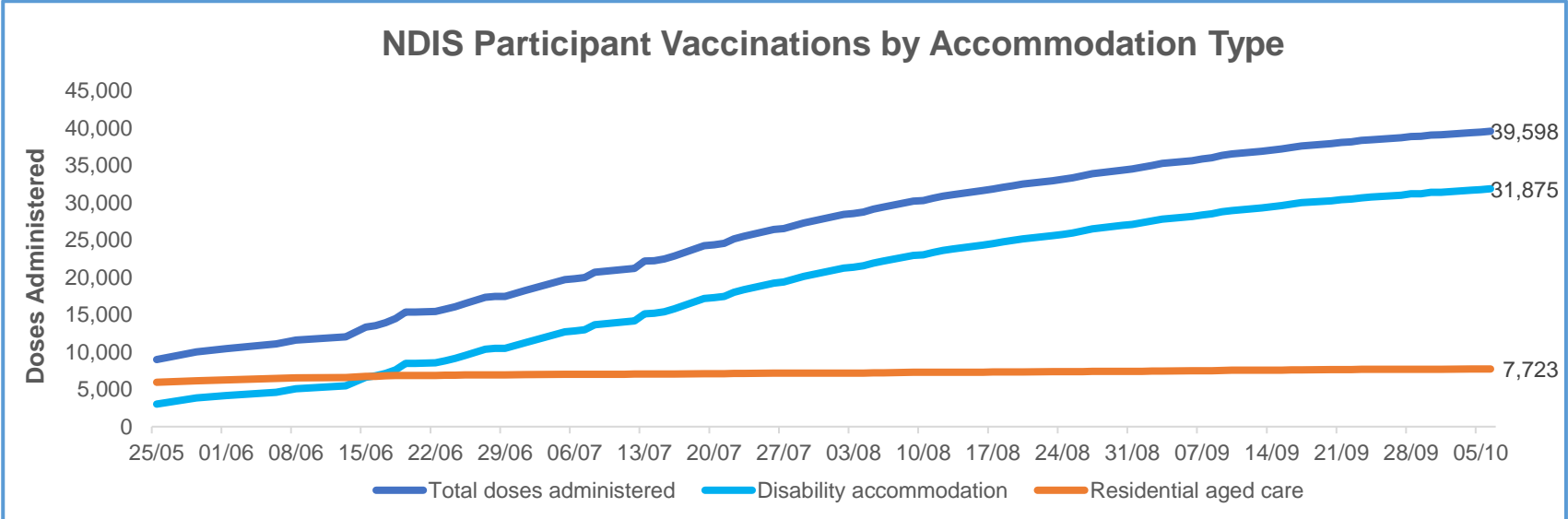
**State level breakdown indicates the residential location and may not align to the state in which the vaccination occurred.

23,890 doses administered to persons residing in other territories or with missing residential information

Data as at:
06 Oct 2021*

Vaccination rate of people with disability and the disability workforce

Phase 1a – People with disability living in shared accommodation



	Total people with at least one dose	People fully vaccinated	Total number of individuals in cohort	Total doses administered	% People with at least one dose	% People fully vaccinated
NDIS participants living in shared accommodation **	20,865	18,733	27,293	39,598	76.4%	68.6%
NDIS screened workers ***	156,403	129,205	206,065	285,608	75.9%	62.7%

* Updates are available Monday to Friday on participants, and bi-weekly for workers, numbers may be up to four days old.

** Shared accommodation means two or more people with disability living in shared residential accommodation and NDIS participants living in Residential Aged Care accommodation as per the eligibility criteria of Phase 1a.

*** Total number of workers within the NDIS Commission Worker Screening database who have ever been successfully screened and linked to an NDIS registered provider or participant.

Source: Linkage between National Disability Insurance Agency data, NDIS Quality and Safeguards Commission data and the Australian Immunisation Register.



Residential aged care vaccination rollout

Residential aged care facilities status

100%
Commonwealth facilities visited (2,573 planned sites)

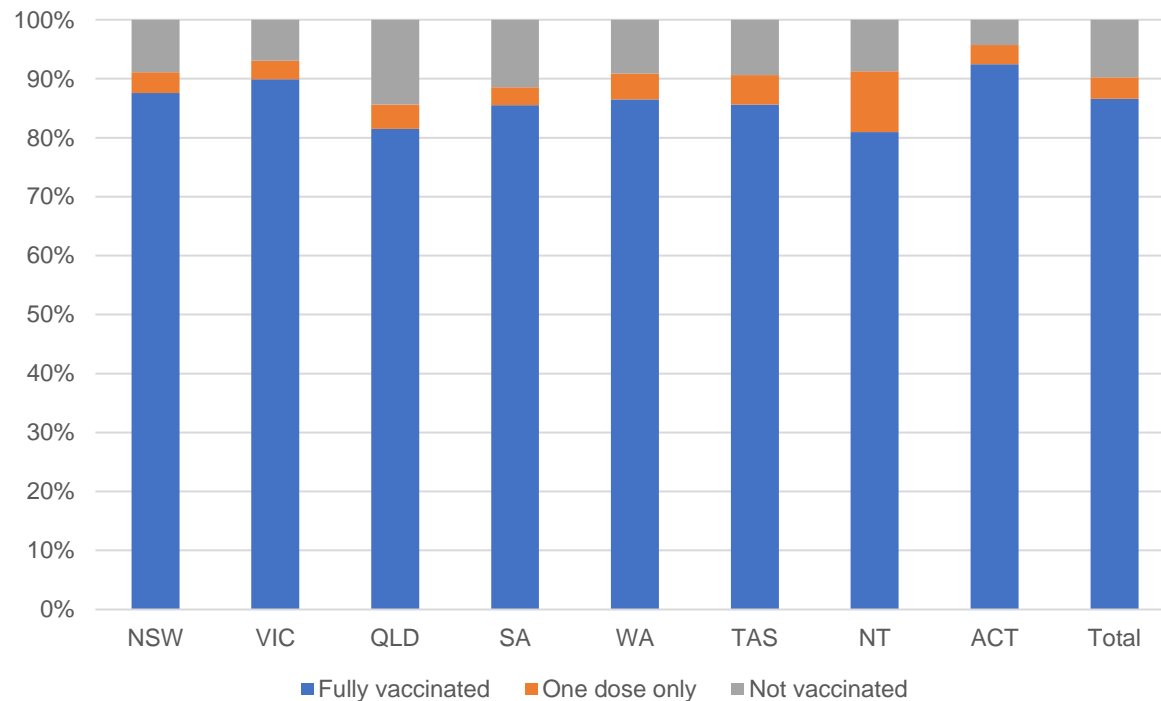
161,356
People fully vaccinated

90.2%
Participation rate

Australia's COVID-19
Vaccine Roadmap

Data as at:
06 Oct 2021

Aged care resident vaccinations



Aged care worker vaccinations

Jurisdictions	Total workers with at least one dose	Workers fully vaccinated	% Workers with at least one dose	% Workers fully vaccinated
NSW	78,714	69,502	99.7%	88.0%
VIC	71,420	62,268	99.6%	86.9%
QLD	47,890	39,519	99.8%	82.4%
SA	27,003	23,441	100.0%	86.8%
WA	23,276	18,478	99.5%	79.0%
TAS	7,565	6,473	100.0%	85.5%
NT	803	771	99.3%	95.3%
ACT	2,919	2,670	100.0%	91.5%
Total	259,590	223,122	99.7%	85.7%

Source: My Aged Care Portal staff vaccination progress

**Resident vaccination information is reported manually by service providers

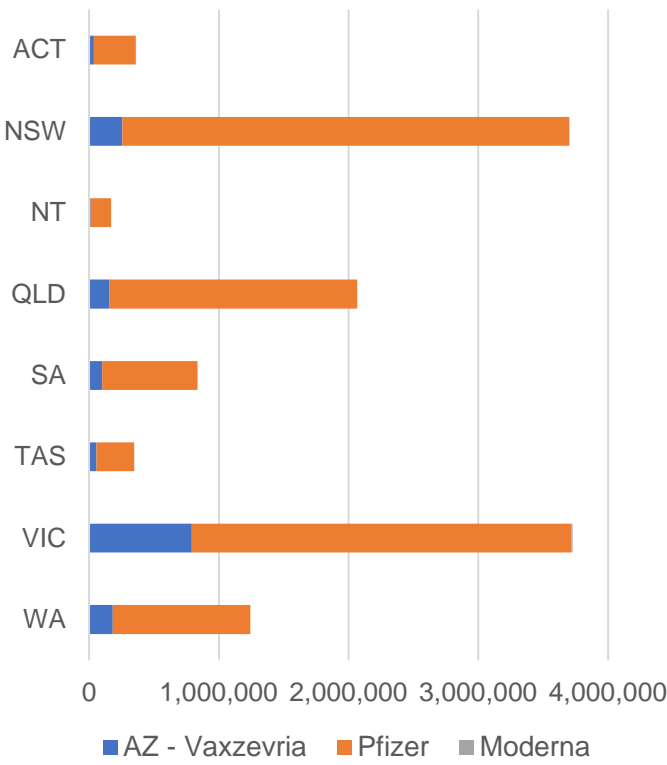
*Status updates are provided by facilities at least once per week. Reporting is updated Monday to Friday to encompass different facility updates being made on different days.

Data is sourced directly from Aged Care Service Providers and is not drawn or closely aligned with data from AIR due to inconsistencies and potential lags in uploading of records.

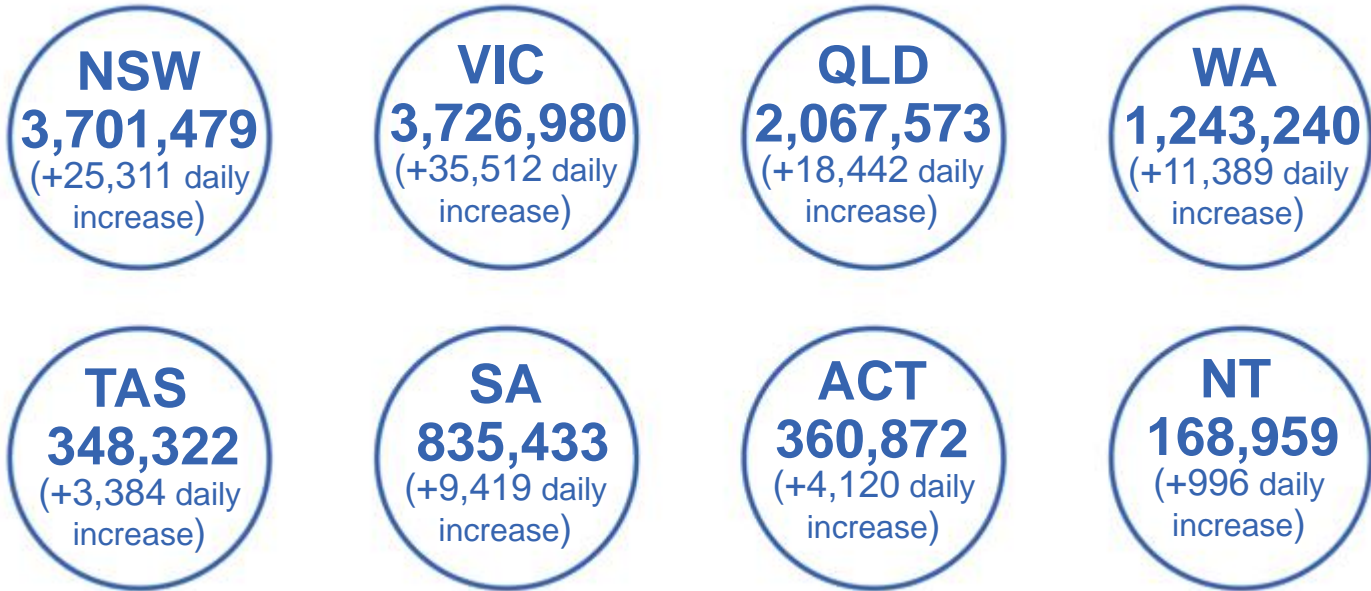
Data as at:
06 Oct 2021

Jurisdiction administered

Total vaccine doses administered in State and Territory clinics as at 06 October



12,452,858 total vaccine doses administered
in State and Territory clinics as at 06 October
+ **108,573** recorded in the last 24 hours
+ **708,387** recorded in the last 7 days



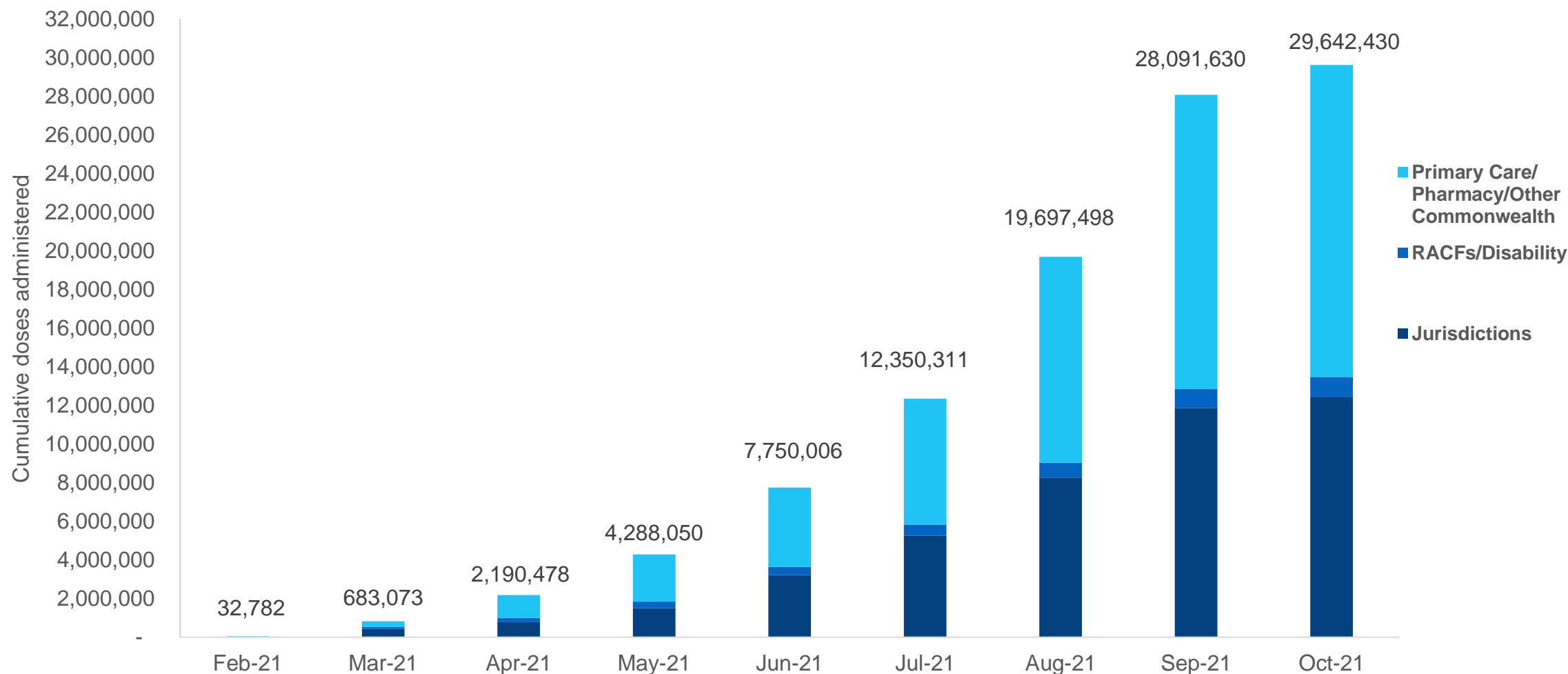
*Sourced from the Australian Immunisation Register and self-reported data. Numbers are calculated as difference in daily cumulative reported numbers to allow for historical corrections in all self-reported data sources.

Source: Australian Immunisation Register

Cumulative doses administered by channel

Data as at:
06 Oct 2021

Australia's COVID-19
Vaccine Roadmap



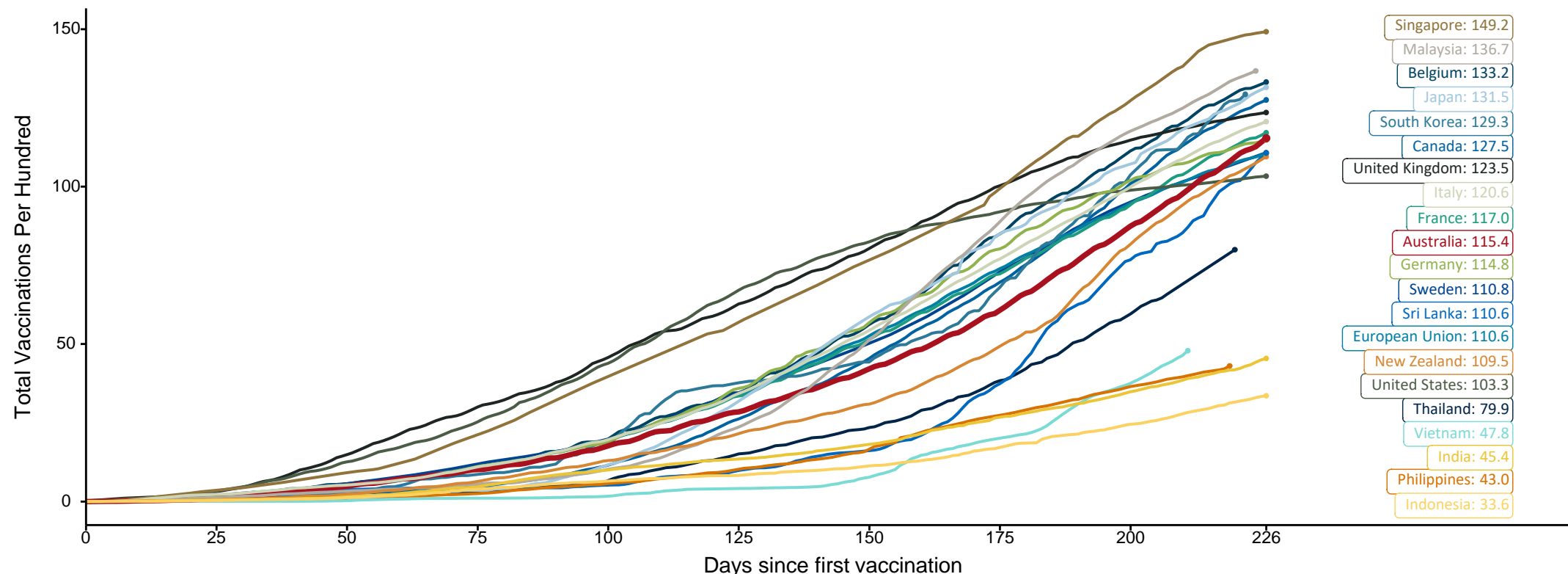
Source: Australian Immunisation Register

Doses at equivalent stages of rollout (Day 226)

Data as at:
06 Oct 2021

The x-axis is truncated at the length of Australia's vaccination program. Countries with intermittent reporting have had their doses per 100 imputed to Australia's current stage of rollout. Israel excluded as it is beyond scale of the graph

Cumulative doses administered (06 Oct): **29,642,430**

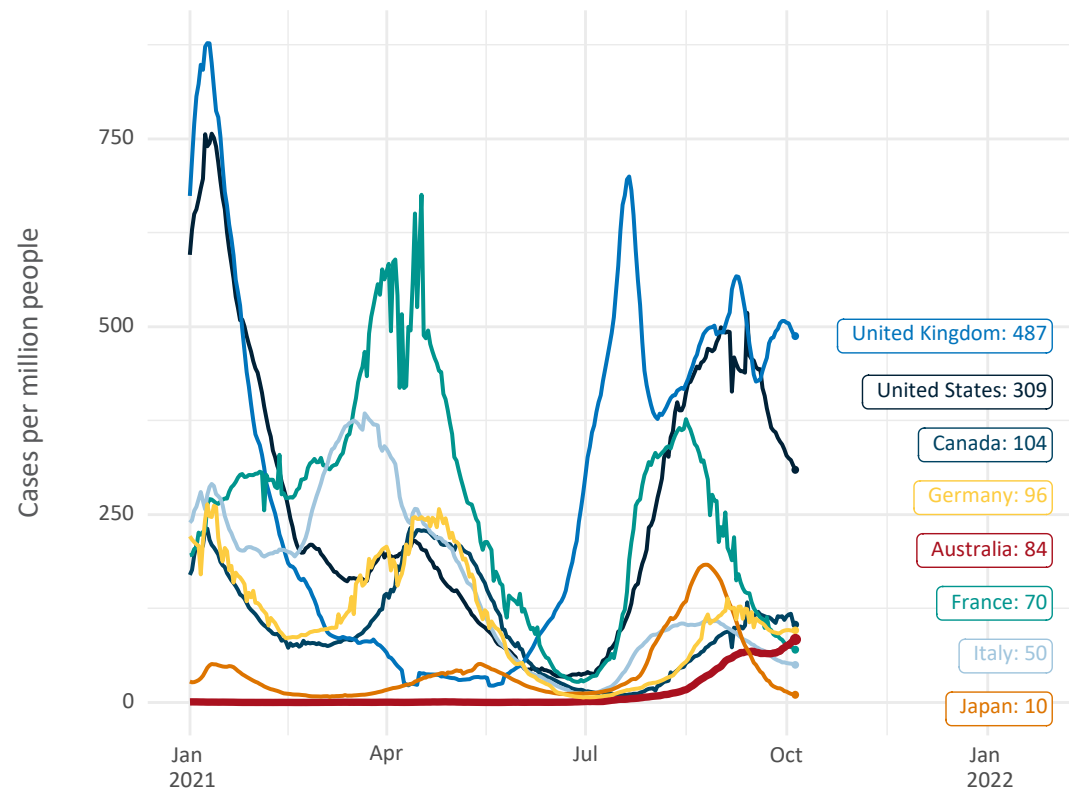


Note: From 15 September 2021, data for Australia includes all doses administered to people 12 and over. Prior to 15 September, data was for 16 and over
Source: Department of Health (Australia), Our World in Data (international)
Latest data: 06 October

International data – COVID-19

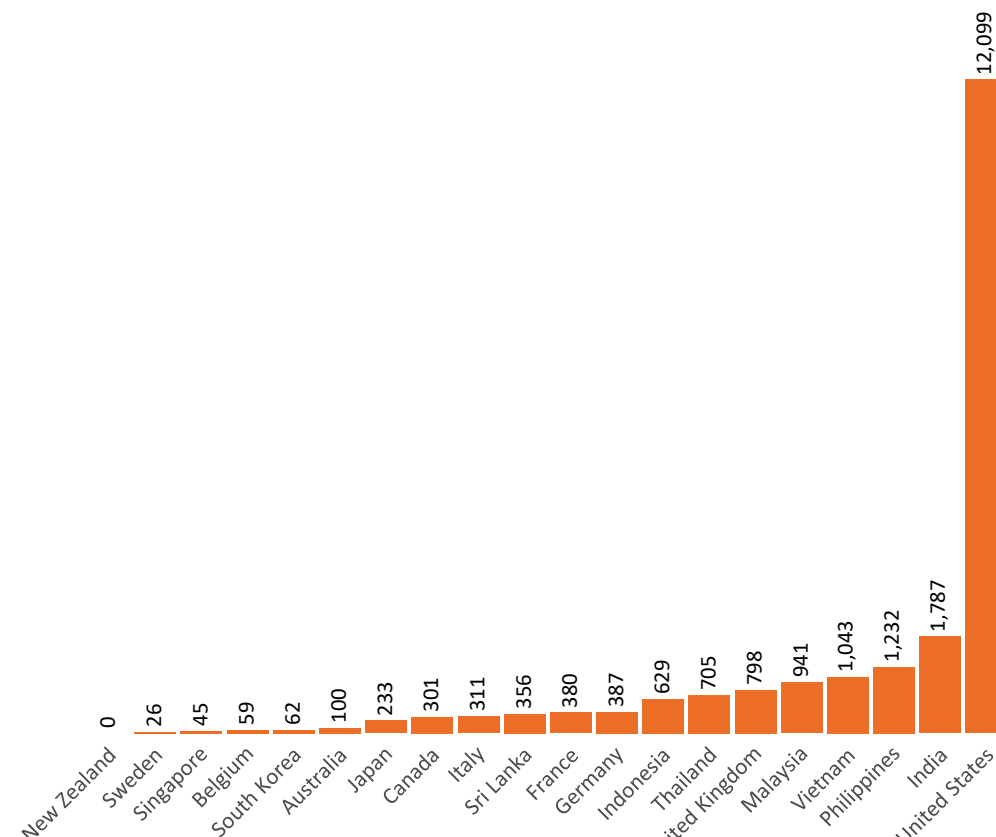
Data as at:
06 Oct 2021

New daily cases per million in 2021, Australia and G7 countries
Smoothed - 7 day average



Source: OWID
Data downloaded: 07 Oct 2021 10:48
Latest data: 05 Oct 2021

COVID-19 deaths in past 7 days - Australia and select countries

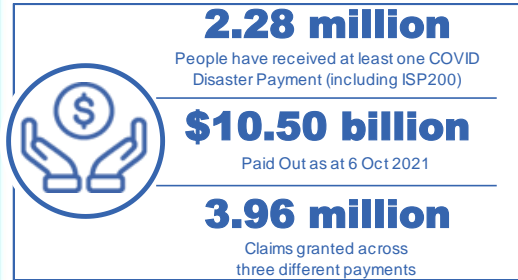


Source: OWID
Data downloaded: 07 Oct 2021 10:48
Latest data: 05 Oct 2021

Pandemic Response Payments

Australia's COVID-19
Vaccine Roadmap

Data as at midnight:
6 Oct 2021



COVID Disaster Payment:	3.86 million claims received - 2.10 million individuals paid a total of \$10.18 billion.
\$200 Income Support Payment:	246,000 claims received - 171,000 individuals paid a total of \$211.65 million.
Pandemic Leave Disaster Payment:	84,000 claims received - 73,000 individuals paid a total of \$116.17 million.



COVID Disaster Payment
assisting during a lockdown event in a Commonwealth hotspot.

Income Support Payment \$200
for income support recipients who lost at least 8 hours of work.

Pandemic Leave Disaster Payment
for those who have to self-isolate, quarantine or care.

For more information visit:
servicesaustralia.gov.au

COVID-19 DISASTER PAYMENTS

New South Wales

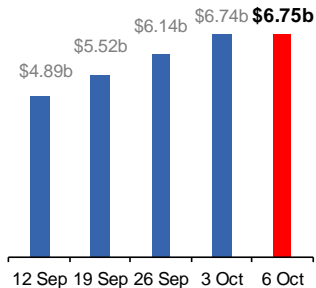
Active lockdown since 24 Jun

1.06m people have received at least one COVID Disaster Payment.

\$6.75b paid out as at 6 Oct 2021.

\$599m paid in initial and reoccurring payments in the week ending 3 Oct 2021.

Cumulative payments made by State since activation on 1 Jul 2021.



Victoria

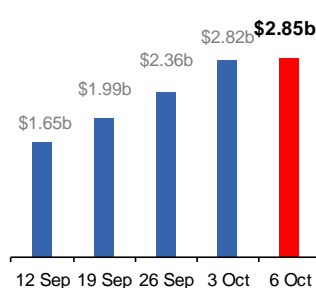
Active lockdown (#6) since 6 Aug

688,000 people have received at least one COVID Disaster Payment.

\$2.85b paid out as at 6 Oct 2021.

\$455m paid in initial and reoccurring payments in the week ending 3 Oct 2021.

Cumulative payments made by State since activation on 8 Jun 2021.



Australian Capital Territory

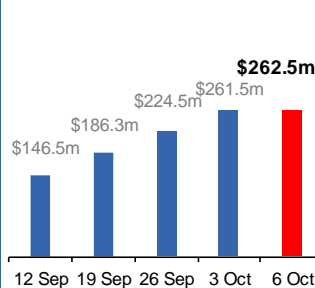
Active lockdown since 12 Aug

64,000 people have received at least one COVID Disaster Payment.

\$262.5m paid out as at 6 Oct 2021.

\$37m paid in initial and reoccurring payments in the week ending 3 Oct 2021.

Cumulative payments made by State since activation on 20 Aug 2021.



Northern Territory

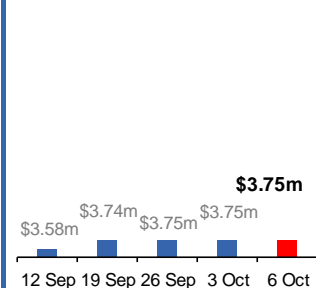
Lockdown from 18 – 20 Jul
Claiming period ended 13 Sep

5,789 people have received at least one COVID Disaster Payment.

\$3.75m paid out as at 6 Oct 2021.

\$5,000 paid in initial and reoccurring payments in the week ending 3 Oct 2021.

Cumulative payments made by State since activation on 25 Aug 2021.



Queensland

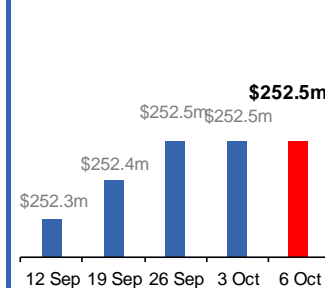
Lockdown from 31 Jul – 11 Aug
Claiming period ended 28 Aug

196,000 people have received at least one COVID Disaster Payment.

\$252.5m paid out as at 6 Oct 2021.

\$24,000 paid in initial and reoccurring payments in the week ending 3 Oct 2021.

Cumulative payments made by State since activation on 7 Aug 2021.



South Australia

Lockdown from 21 – 27 Jul
Claiming period ended 17 Aug

86,000 people have received at least one COVID Disaster Payment.

\$48.2m paid out as at 6 Oct 2021.

\$1,000 paid in initial and reoccurring payments in the week ending 3 Oct 2021.

Cumulative payments made by State since activation on 28 Jul 2021.

