



**Australian Government**  
**Operation COVID Shield**

# COVID-19 Vaccine Roll-out

06 October 2021

Data as at:  
05 Oct 2021

## Total vaccine doses



**29,305,871** total vaccine doses administered nationally as at 05 October  
**+350,856** recorded in the last 24 hours



**16,592,771**

people have had at least one dose

**80.5%**

of people over the age of 16 have had at least one dose



**12,032,883**

people are fully vaccinated

**58.4%**

of people over the age of 16 are fully vaccinated

**NSW**  
**10,579,684**  
(+140,225 daily increase)

**VIC**  
**7,748,137**  
(+95,600 daily increase)

**QLD**  
**5,024,572**  
(+50,798 daily increase)

**WA**  
**2,536,309**  
(+26,519 daily increase)

**TAS**  
**624,391**  
(+5,065 daily increase)

**SA**  
**1,787,693**  
(+20,317 daily increase)

**ACT**  
**726,607**  
(+11,076 daily increase)

**NT**  
**278,478**  
(+1,256 daily increase)

\*Administration state breakdown indicates state in which a vaccine was administered  
\*\*Overall dose count includes instances of more than two doses per person in a small number of cases.

Data as at:  
05 Oct 2021

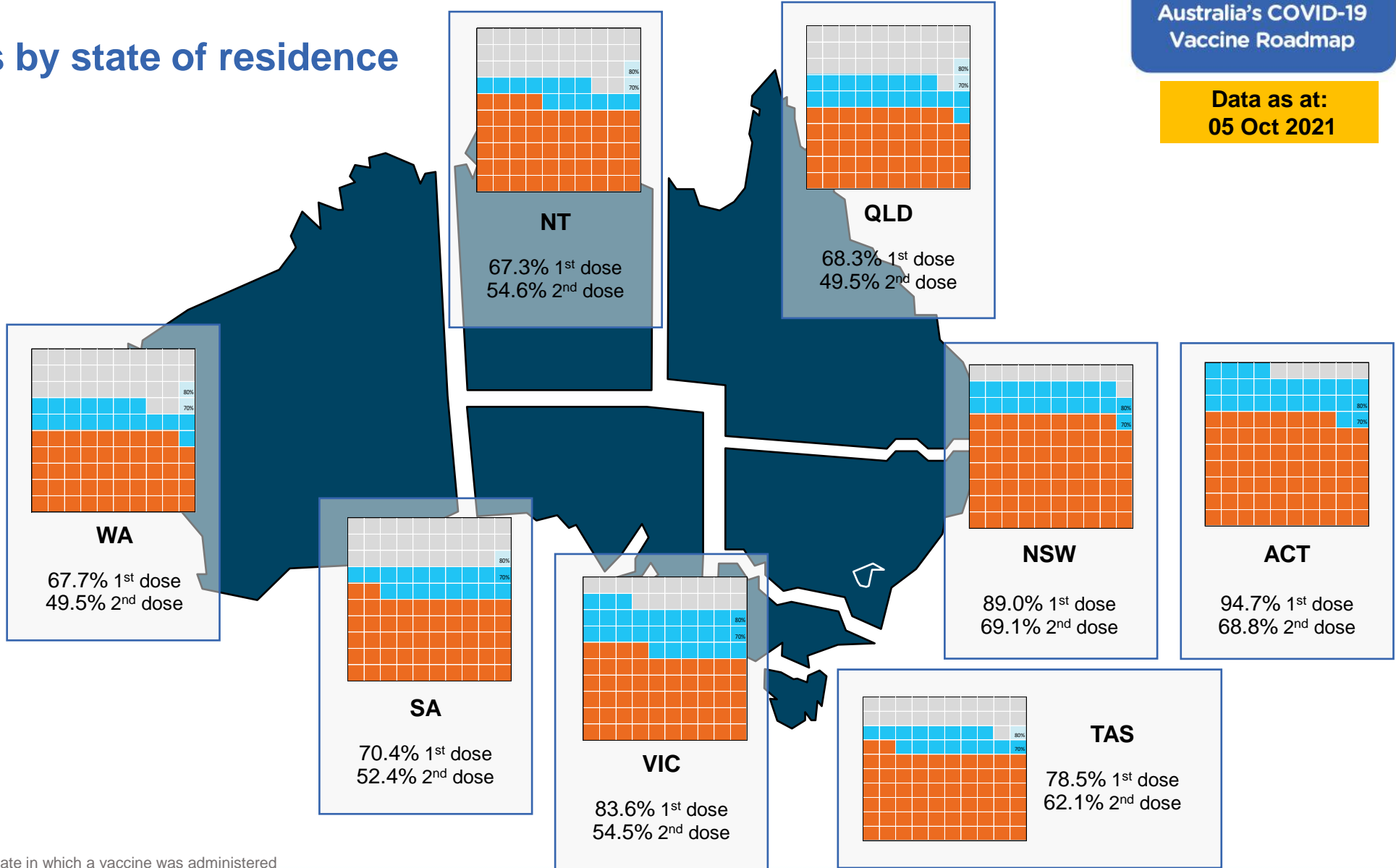
# Vaccinations by state of residence

## First doses

Age	Today	4 weeks ago	8 weeks ago
16+	80.5%	65.3%	46.2%
50+	90.6%	82.8%	71.0%
70+	95.6%	90.5%	83.5%

## Fully vaccinated

Age	Today	4 weeks ago	8 weeks ago
16+	58.4%	40.3%	24.4%
50+	73.9%	59.3%	35.2%
70+	80.5%	69.1%	50.4%



\*Residential state may differ from the state in which a vaccine was administered

## Commonwealth and Jurisdiction vaccine doses administered

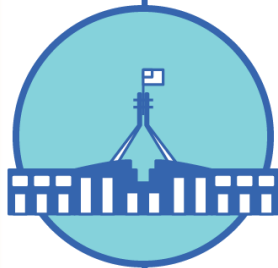
Data as at:  
05 Oct 2021



**29,305,871** total vaccine doses administered nationally as at 05 October  
+ **350,856** recorded in the last 24 hours



**12,344,285** doses administered by state and territory facilities  
+ **108,076** recorded in the last 24 hours



**16,961,586** doses administered by commonwealth facilities  
+ **242,780** recorded in the last 24 hours  
**15,937,407** total vaccine doses administered in primary care settings  
**1,024,179** total vaccine doses administered in aged care and disability settings

NSW	Jurisdictions	Commonwealth
Cumulative	3,676,168	6,903,516
Daily increase	32,545	107,680

VIC	Jurisdictions	Commonwealth
Cumulative	3,691,468	4,056,669
Daily increase	35,738	59,862

QLD	Jurisdictions	Commonwealth
Cumulative	2,049,131	2,975,441
Daily increase	10,202	40,596

WA	Jurisdictions	Commonwealth
Cumulative	1,231,851	1,304,458
Daily increase	11,996	14,523

TAS	Jurisdictions	Commonwealth
Cumulative	344,938	279,453
Daily increase	2,837	2,228

SA	Jurisdictions	Commonwealth
Cumulative	826,014	961,679
Daily increase	9,494	10,823

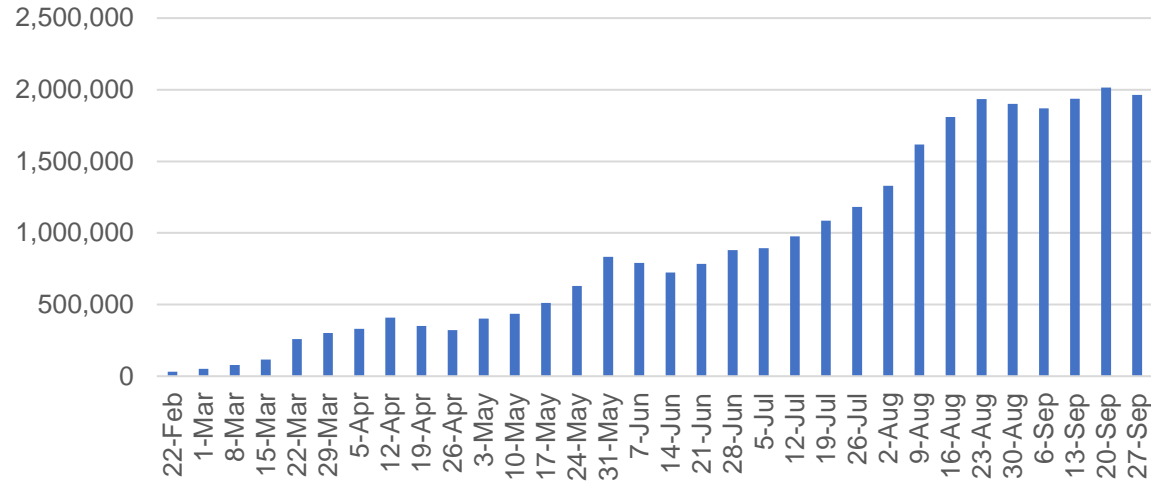
ACT	Jurisdictions	Commonwealth
Cumulative	356,752	369,855
Daily increase	4,560	6,516

NT	Jurisdictions	Commonwealth
Cumulative	167,963	110,515
Daily increase	704	552

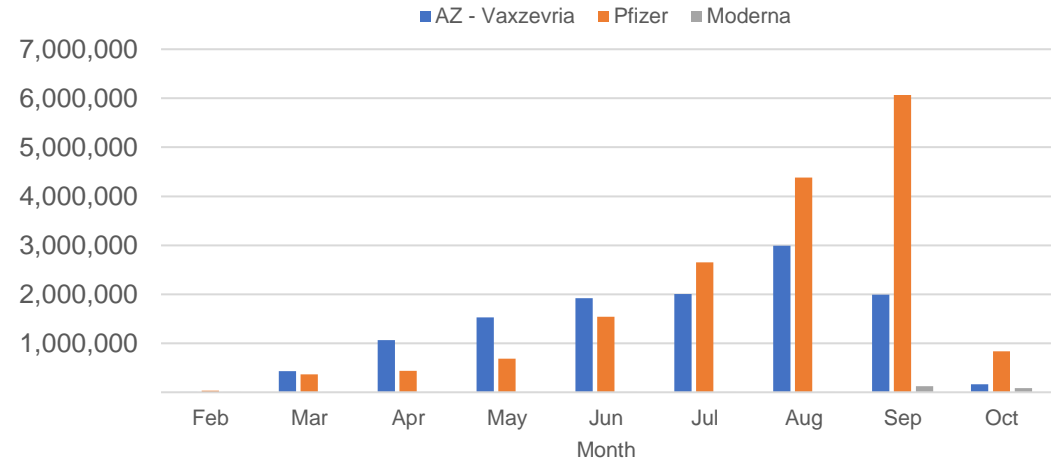
# Vaccine milestone charts

Data as at: 05 Oct 2021

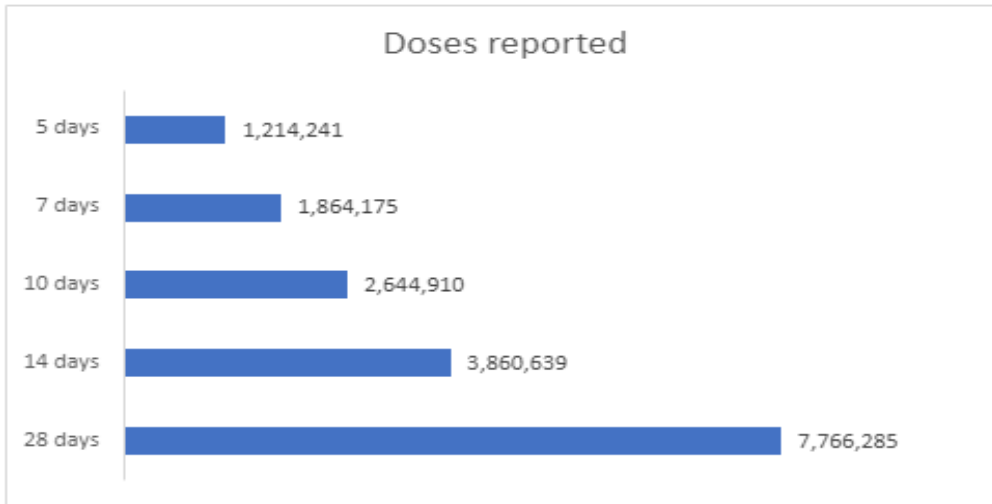
Jabs in arms by week



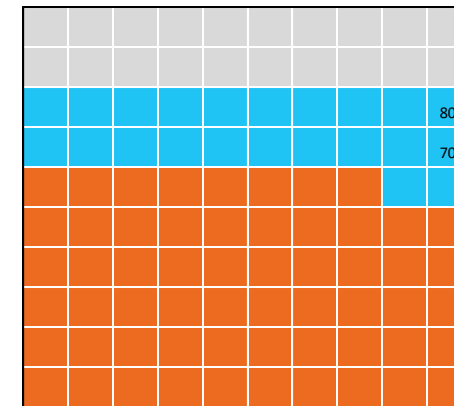
Doses by administration month and vaccine type



Doses reported



Eligible population percentage coverage



\*Sourced from the Australian Immunisation Register.

\*Each square represents 1% of the national population. Squares are filled as milestones are achieved.

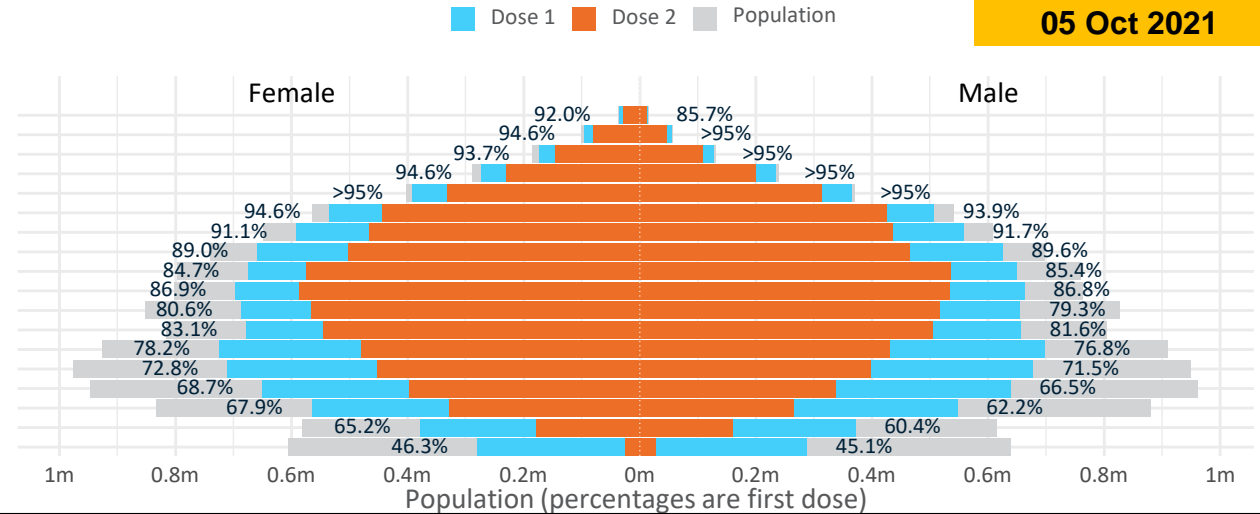
# Doses by age and sex

First and second doses by age and sex

Data as at:  
05 Oct 2021

	16+	50+	70+	12-15
Dose 1	<b>80.47%</b> (16,592,771 doses / 20,619,959 people)	<b>90.58%</b> (7,925,540 doses / 8,749,703 people)	<b>&gt; 95%</b> (2,805,472 doses / 2,934,706 people)	<b>45.67%</b> (568,119 doses / 1,243,990 people)
Dose 2	<b>58.36%</b> (12,032,883 doses / 20,619,959 people)	<b>73.87%</b> (6,463,054 doses / 8,749,703 people)	<b>80.49%</b> (2,362,120 doses / 2,934,706 people)	<b>4.18%</b> (52,013 doses / 1,243,990 people)

Age	Dose 1	Dose 2
95+	47,783 (90.3%)	39,976 (75.6%)
90-94	150,848 (>95%)	126,805 (80.0%)
85-89	300,592 (>95%)	252,421 (79.8%)
80-84	507,024 (>95%)	429,738 (81.3%)
75-79	757,023 (>95%)	644,109 (83.2%)
70-74	1,042,202 (94.3%)	869,071 (78.6%)
65-69	1,150,718 (91.5%)	901,450 (71.6%)
60-64	1,284,720 (89.4%)	968,453 (67.4%)
55-59	1,324,119 (85.1%)	1,110,245 (71.4%)
50-54	1,360,511 (87.0%)	1,120,786 (71.6%)
45-49	1,342,280 (80.1%)	1,083,369 (64.6%)
40-44	1,336,041 (82.5%)	1,052,109 (64.9%)
35-39	1,426,460 (77.7%)	911,825 (49.7%)
30-34	1,395,588 (72.5%)	852,054 (44.3%)
25-29	1,298,044 (68.1%)	738,837 (38.8%)
20-24	1,118,018 (65.3%)	594,702 (34.7%)
16-19	750,800 (62.8%)	336,933 (28.2%)
12-15	568,119 (45.7%)	52,013 (4.2%)



	AUS	ACT	NSW	NT	QLD	SA	TAS	VIC	WA
16 and over - dose 1	16,592,771	325,830	5,844,107	128,318	2,807,466	1,013,878	345,619	4,518,352	1,432,007
16 and over - dose 2	12,032,883	236,813	4,538,018	104,054	2,037,002	754,156	273,180	2,949,785	1,047,794
16 and over - population	20,619,959*	344,037	6,565,651	190,571	4,112,707	1,440,400	440,172	5,407,574	2,114,978
16 and over % with dose 1	80.47%	94.71%	89.01%	67.33%	68.26%	70.39%	78.52%	83.56%	67.71%
16 and over % with dose 2	58.36%	68.83%	69.12%	54.60%	49.53%	52.36%	62.06%	54.55%	49.54%
50 and over - dose 1	7,925,540	130,142	2,666,404	48,560	1,488,578	574,673	195,845	2,025,426	747,180
50 and over - dose 2	6,463,054	113,852	2,243,112	40,962	1,180,923	449,516	165,165	1,647,087	589,386
50 and over - population	8,749,703	127,802	2,807,793	62,280	1,758,855	674,384	220,036	2,211,211	885,370
50 and over % with dose 1	90.58%	>95%	94.96%	77.97%	84.63%	85.21%	89.01%	91.60%	84.39%
50 and over % with dose 2	73.87%	89.08%	79.89%	65.77%	67.14%	66.66%	75.06%	74.49%	66.57%
70 and over - dose 1	2,805,472	42,365	942,662	10,399	533,513	222,420	73,464	703,401	257,424
70 and over - dose 2	2,362,120	37,551	813,979	8,800	445,014	178,077	62,800	591,644	209,167
70 and over - population	2,934,706	39,946	962,606	12,343	577,767	240,514	77,155	743,519	280,281
70 and over % with dose 1	>95%	>95%	>95%	84.25%	92.34%	92.48%	>95%	94.60%	91.84%
70 and over % with dose 2	80.49%	94.00%	84.56%	71.30%	77.02%	74.04%	81.39%	79.57%	74.63%
12 to 15 - dose 1	568,119	15,154	238,634	4,309	79,724	17,781	5,573	175,551	28,067
12 to 15 - dose 2	52,013	874	29,196	1,900	8,109	1,900	887	8,487	1,308
12 to 15 - population	1,243,990	19,693	390,330	13,060	270,146	82,747	26,308	308,611	132,869
12 to 15 % with dose 1	45.67%	76.95%	61.14%	32.99%	29.51%	21.49%	21.18%	56.88%	21.12%
12 to 15 % with dose 2	4.18%	4.44%	7.48%	14.55%	3.00%	1.12%	3.37%	2.75%	0.98%

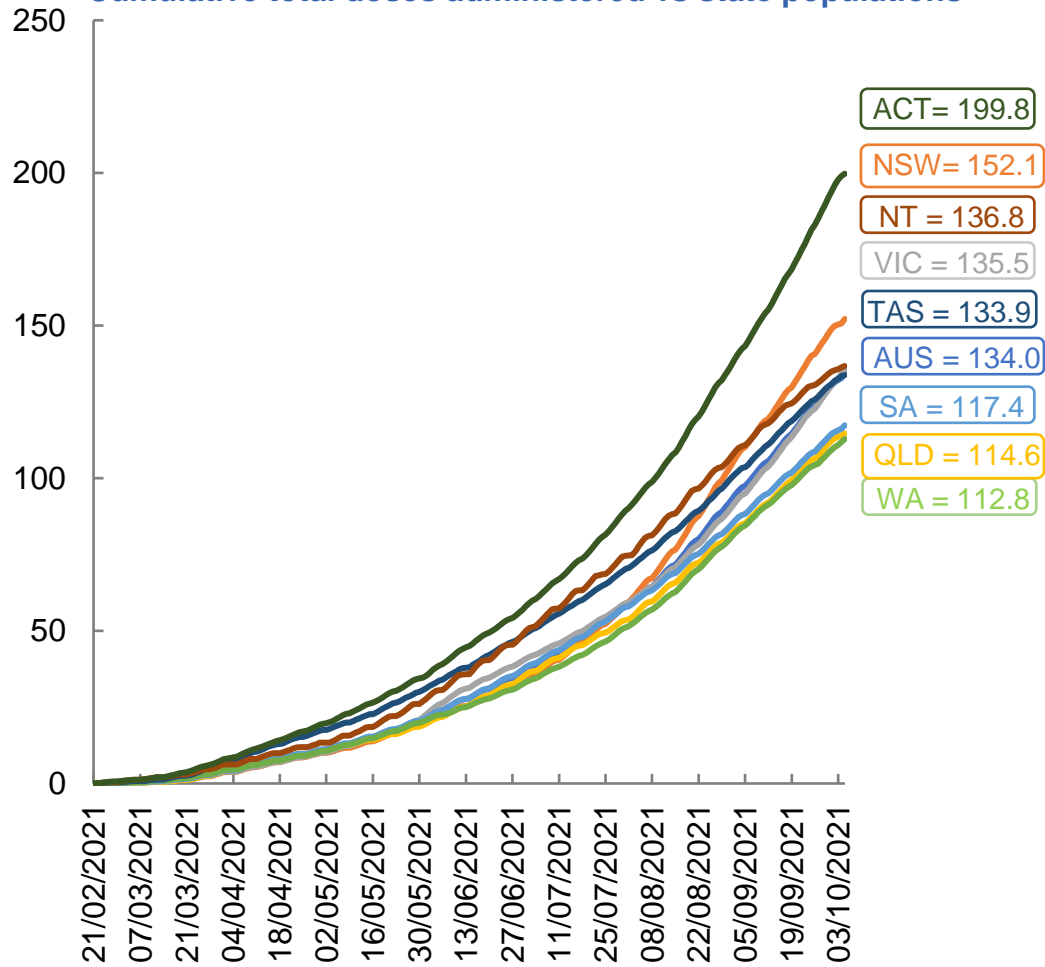
\*National population will not equal sum of listed jurisdictions due to a small number of people counted in national population residing in some 'other' territories. Sum of state doses will not add to national total as some records are unable to be geocoded to a State or Territory. Doses sourced from Australian Immunisation Register, population from ABS ERP June 2020

# Vaccinations by location

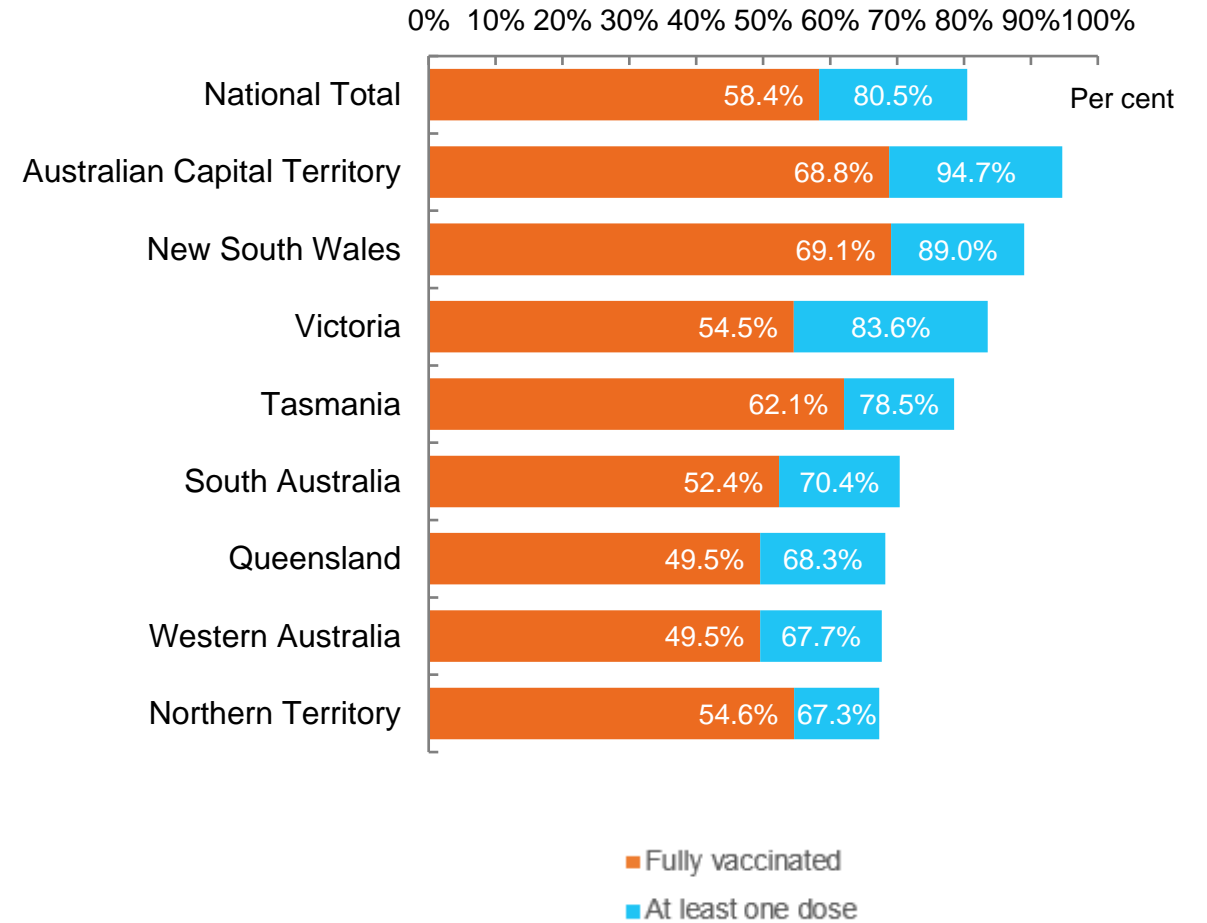
Data as at:  
05 Oct 2021

Australia's COVID-19  
Vaccine Roadmap

Cumulative total doses administered vs state populations \*\*



First and Second Doses by state of residence



\*Not an indication of percentage vaccinated, numbers will exceed 100 due to multiple doses required per person of the population  
# State populations adjusted to include 12-15 year olds as total doses includes vaccinations administered to this age group

# Aboriginal and Torres Strait Islander peoples

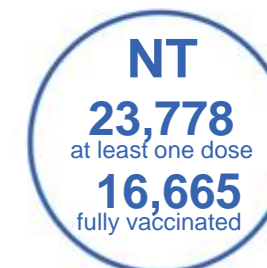
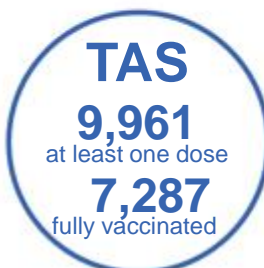
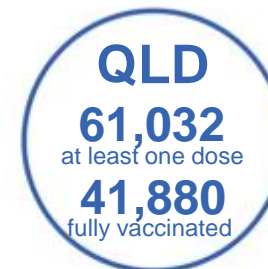
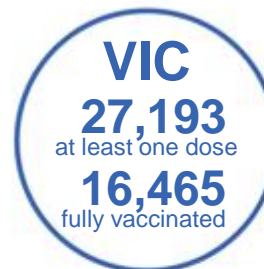
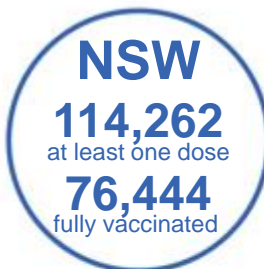
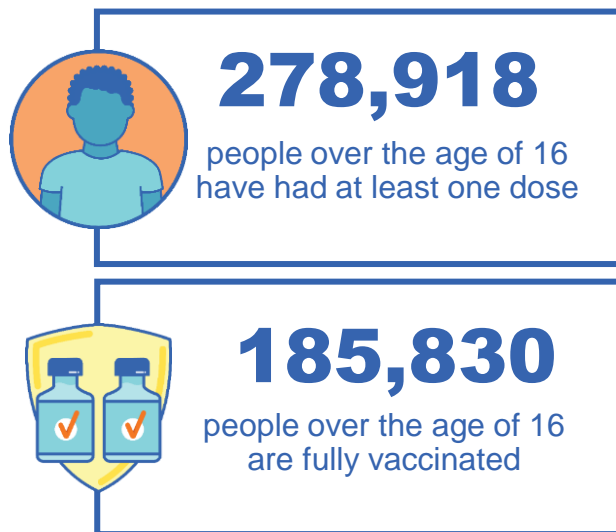
## Number of people vaccinated

Data as at:  
03 Oct 2021  
Updated weekly

Australia's COVID-19  
Vaccine Roadmap

### 167 Aboriginal community controlled health services (ACCHS)

0#	48	26	39	12	3	21	18
<b>ACT</b>	<b>NSW</b>	<b>NT</b>	<b>QLD</b>	<b>SA</b>	<b>TAS</b>	<b>VIC</b>	<b>WA</b>



**7,518** people with at least one dose  
**4,319** people fully vaccinated

residing in other territories or with missing residential information

Source: Australian Immunisation Register

\*Identifying as Aboriginal and Torres Strait Islander is optional and the estimated population may be under reported.

\*\*Includes all Aboriginal and Torres Strait Islander peoples who have received a vaccination, not limited to those administered in an ACCHS setting

\*\*\*Updated weekly.

#ACCHS in the ACT are currently operating as a Commonwealth Vaccine Clinics so not included to avoid double counting



Data as at:  
05 Oct 2021

## Commonwealth primary care



### Primary care vaccine administration sites

<b>5,529</b>	<b>137</b>	<b>167</b>	<b>3,329</b>
GPs	CVCs	ACCHS	Pharmacies



**15,937,407** total vaccine doses administered primary care settings as at 05 October  
+ **233,656** recorded in the last 24 hours

### Primary care vaccinations by provider type

	Doses administered	Daily increase	7 day increase
<b>General Practice*</b> includes other Commonwealth	14,987,232	193,347	919,586
<b>Pharmacy</b>	950,175	40,309	194,501

**NSW**  
**6,449,149**  
(+102,208 daily increase)

**VIC**  
**3,856,144**  
(+58,398 daily increase)

**QLD**  
**2,758,665**  
(+38,586 daily increase)

**WA**  
**1,242,709**  
(+14,675 daily increase)

**TAS**  
**268,750**  
(+2,368 daily increase)

**SA**  
**908,860**  
(+10,957 daily increase)

**ACT**  
**270,495**  
(+4,272 daily increase)

**NT**  
**94,649**  
(+758 daily increase)

**87,986** doses administered to persons residing in other territories or with missing residential information

\*General practice includes Commonwealth Vaccination Clinics, Aboriginal Community Health Centres, Royal Flying Doctor Service and other Commonwealth vaccination facilities

Source: Australian Immunisation Register

Data as at:  
05 Oct 2021

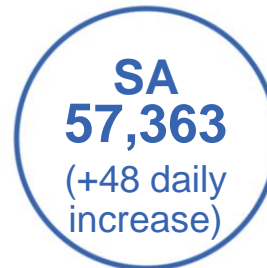
# Commonwealth aged care and disability doses administered



**1,024,179** (+ 9,124 last 24 hours)

Total vaccine doses administered in aged care and disability facilities as at 05 October

Number of doses administered as part of the Commonwealth aged and disability care rollout



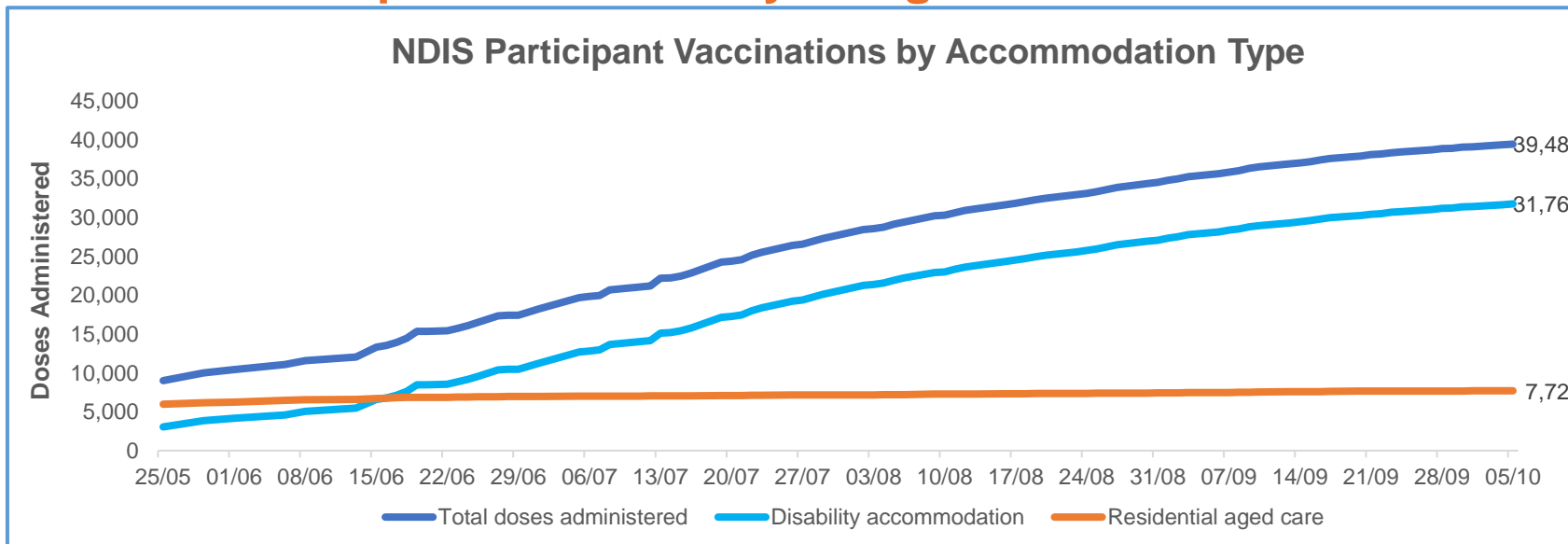
\*Sourced from the Australian Immunisation Register. Includes all persons vaccinated at participating residential aged care, disability and related industry settings.  
\*\*State level breakdown indicates the residential location and may not align to the state in which the vaccination occurred.

**23,825** doses administered to persons residing in other territories or with missing residential information

Data as at:  
05 Oct 2021\*

# Vaccination rate of people with disability and the disability workforce

## Phase 1a – People with disability living in shared accommodation



	Total people with at least one dose	People fully vaccinated	Total number of individuals in cohort	Total doses administered	% People with at least one dose	% People fully vaccinated
<b>NDIS participants living in shared accommodation **</b>	20,832	18,651	27,293	39,483	<b>76.3%</b>	<b>68.3%</b>
<b>NDIS screened workers ***</b>	156,403	129,205	206,065	285,608	<b>75.9%</b>	<b>62.7%</b>



\* Updates are available Monday to Friday on participants, and bi-weekly for workers, numbers may be up to four days old.

\*\* Shared accommodation means two or more people with disability living in shared residential accommodation and NDIS participants living in Residential Aged Care accommodation as per the eligibility criteria of Phase 1a.

\*\*\* Total number of workers within the NDIS Commission Worker Screening database who have ever been successfully screened and linked to an NDIS registered provider or participant.

Source: Linkage between National Disability Insurance Agency data, NDIS Quality and Safeguards Commission data and the Australian Immunisation Register.

## Residential aged care vaccination rollout

Residential aged care facilities status

# 100%

Commonwealth facilities visited (2,573 planned sites)

# 161,650

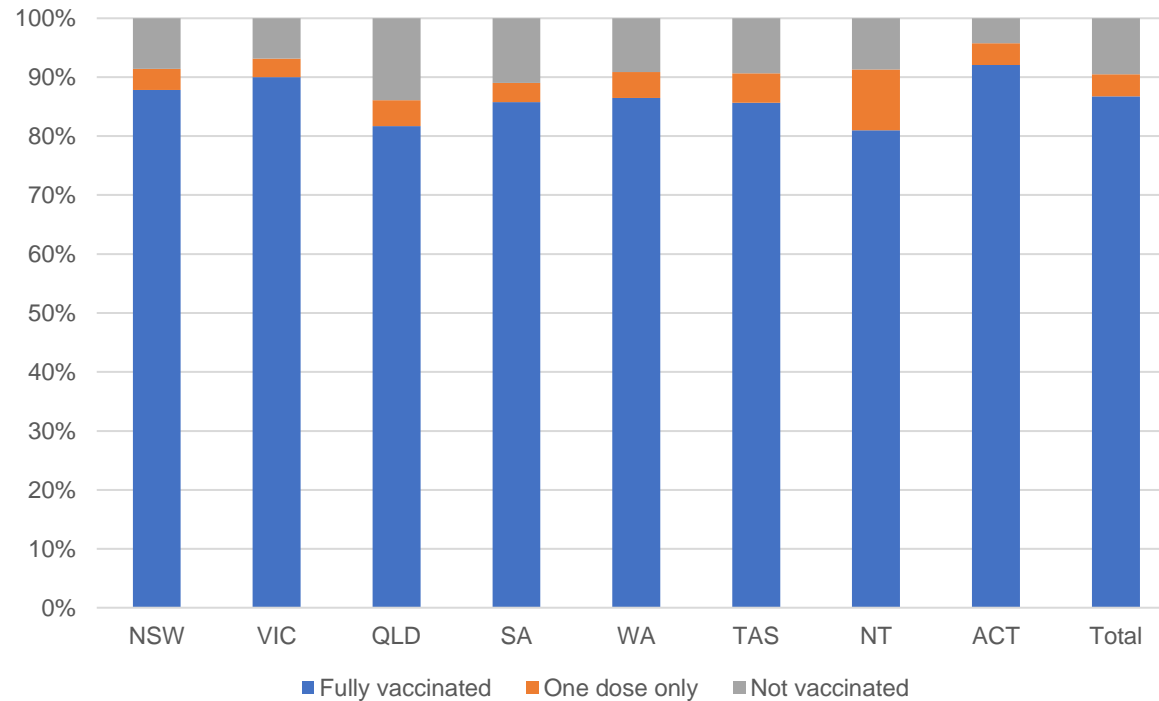
People fully vaccinated

# 90.5%

Participation rate

Data as at:  
05 Oct 2021

### Aged care resident vaccinations



### Aged care worker vaccinations

Jurisdictions	Total workers with at least one dose	Workers fully vaccinated	% Workers with at least one dose	% Workers fully vaccinated
NSW	78,689	69,481	99.7%	88.0%
VIC	71,330	62,083	99.5%	86.6%
QLD	47,868	39,341	97.9%	80.4%
SA	27,014	23,395	99.8%	86.4%
WA	23,280	18,539	99.6%	79.3%
TAS	7,544	6,456	99.9%	85.5%
NT	803	771	99.3%	95.3%
ACT	2,919	2,670	100.0%	91.5%
<b>Total</b>	<b>259,447</b>	<b>222,736</b>	<b>99.3%</b>	<b>85.3%</b>

Source: My Aged Care Portal staff vaccination progress

\*\*Resident vaccination information is reported manually by service providers

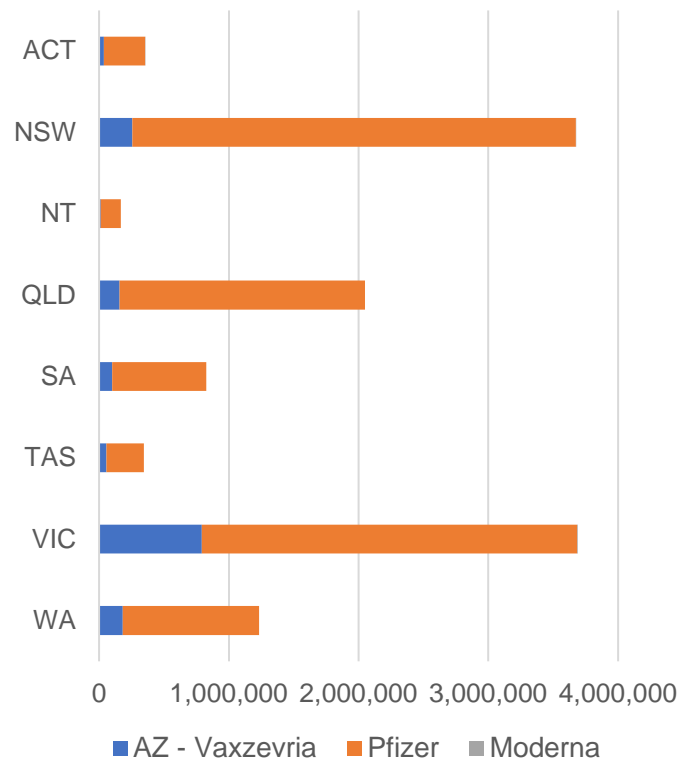
\*Status updates are provided by facilities at least once per week. Reporting is updated Monday to Friday to encompass different facility updates being made on different days.

Data is sourced directly from Aged Care Service Providers and is not drawn or closely aligned with data from AIR due to inconsistencies and potential lags in uploading of records.

Data as at:  
05 Oct 2021

# Jurisdiction administered

Total vaccine doses administered in State and Territory clinics as at 05 October



**12,344,285** total vaccine doses administered in State and Territory clinics as at 05 October  
 + **108,076** recorded in the last 24 hours  
 + **707,586** recorded in the last 7 days

**NSW**  
**3,676,168**  
 (+32,545 daily increase)

**VIC**  
**3,691,468**  
 (+35,738 daily increase)

**QLD**  
**2,049,131**  
 (+10,202 daily increase)

**WA**  
**1,231,851**  
 (+11,996 daily increase)

**TAS**  
**344,938**  
 (+2,837 daily increase)

**SA**  
**826,014**  
 (+9,494 daily increase)

**ACT**  
**356,752**  
 (+4,560 daily increase)

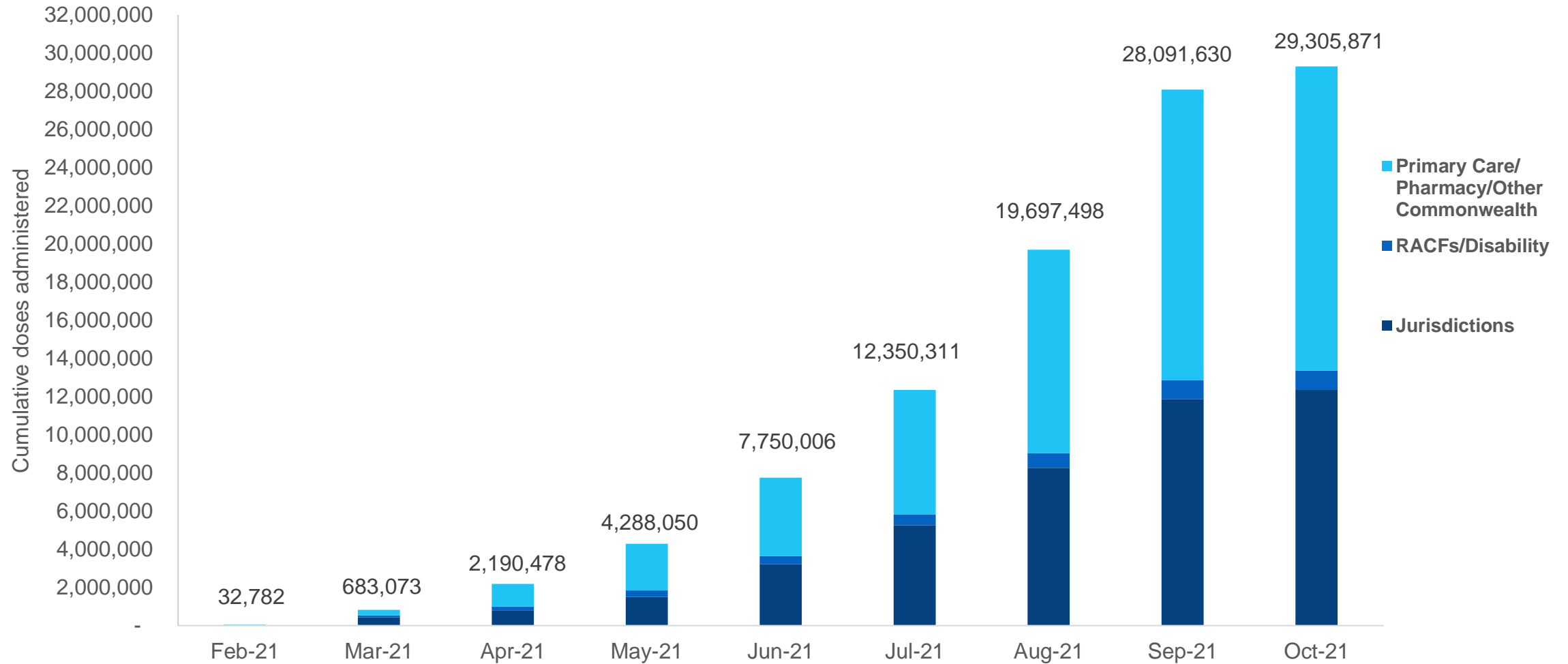
**NT**  
**167,963**  
 (+704 daily increase)

\*Sourced from the Australian Immunisation Register and self-reported data. Numbers are calculated as difference in daily cumulative reported numbers to allow for historical corrections in all self-reported data sources.

Source: Australian Immunisation Register

# Cumulative doses administered by channel

Data as at:  
05 Oct 2021



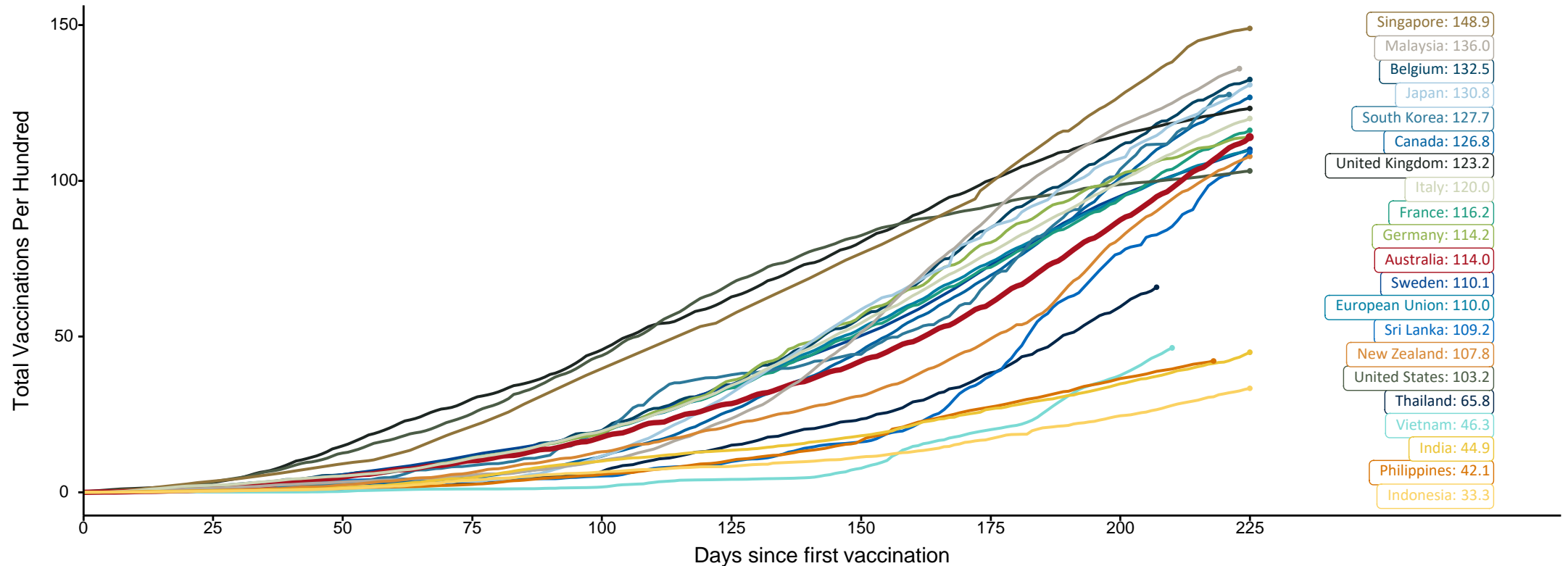
Source: Australian Immunisation Register

# Doses at equivalent stages of rollout (Day 225)

Data as at:  
05 Oct 2021

The x-axis is truncated at the length of Australia's vaccination program. Countries with intermittent reporting have had their doses per 100 imputed to Australia's current stage of rollout. Israel excluded as it is beyond scale of the graph

Cumulative doses administered (05 Oct): **29,305,871**

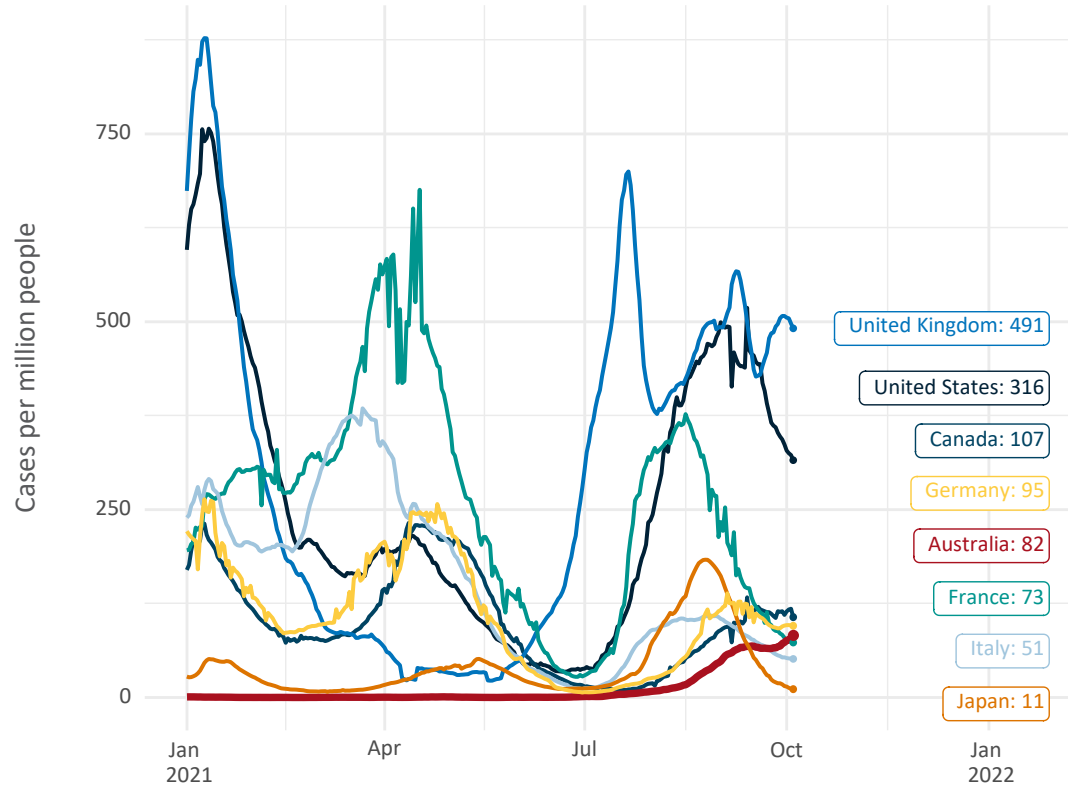


Note: From 15 September 2021, data for Australia includes all doses administered to people 12 and over. Prior to 15 September, data was for 16 and over  
 Source: Department of Health (Australia), Our World in Data (international)  
 Latest data: 05 October

Data as at: 05 Oct 2021

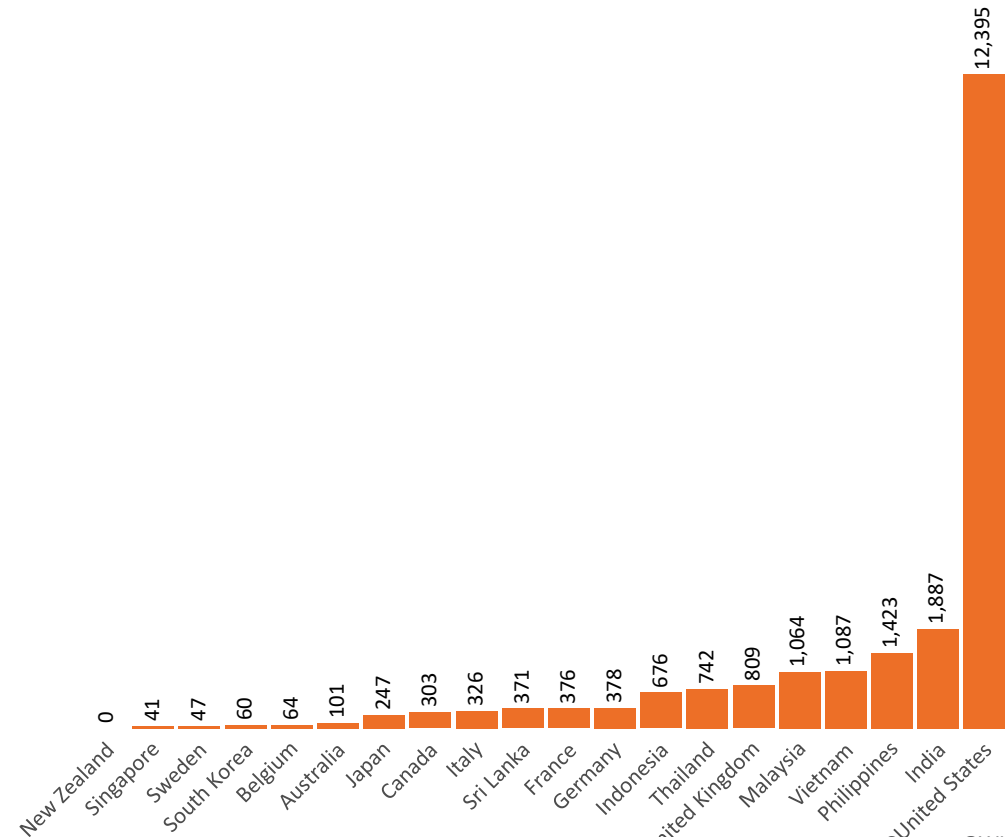
# International data – COVID-19

New daily cases per million in 2021, Australia and G7 countries  
Smoothed - 7 day average



Source: OWID  
Data downloaded: 06 Oct 2021 08:45  
Latest data: 04 Oct 2021

COVID-19 deaths in past 7 days - Australia and select countries




Source: OWID  
Data downloaded: 06 Oct 2021 08:45  
Latest data: 04 Oct 2021



Data as at midnight:  
5 Oct 2021

# Pandemic Response Payments



**2.27 million**  
People have received at least one COVID Disaster Payment (including ISP200)

**\$10.48 billion**  
Paid Out as at 5 Oct 2021

**3.94 million**  
Claims granted across three different payments



**93%**  
of Claims Received Digitally




**COVID Disaster Payment:** 3.85 million claims received - 2.10 million individuals paid a total of \$10.16 billion.

**\$200 Income Support Payment:** 245,000 claims received - 171,000 individuals paid a total of \$211.21 million.

**Pandemic Leave Disaster Payment:** 82,000 claims received - 71,000 individuals paid a total of \$113.37 million.

## COVID-19 DISASTER PAYMENTS



**THREE PAYMENTS AVAILABLE**

**COVID Disaster Payment**  
assisting during a lockdown event in a Commonwealth hotspot.

**Income Support Payment \$200**  
for income support recipients who lost at least 8 hours of work.

**Pandemic Leave Disaster Payment**  
for those who have to self-isolate, quarantine or care.

For more information visit:  
[servicesaustralia.gov.au](https://servicesaustralia.gov.au)

**New South Wales**  
Active lockdown since 24 Jun

**1.06m people have received at least one COVID Disaster Payment.**

**\$6.74b paid out as at 5 Oct 2021.**

**\$599m paid in initial and reoccurring payments in the week ending 3 Oct 2021.**

Cumulative payments made by State since activation on 1 Jul 2021.

Date	Cumulative Payments (\$b)
12 Sep	\$4.89b
19 Sep	\$5.52b
26 Sep	\$6.14b
3 Oct	\$6.74b
5 Oct	\$6.74b

**Victoria**  
Active lockdown (#6) since 6 Aug

**683,000 people have received at least one COVID Disaster Payment.**

**\$2.84b paid out as at 5 Oct 2021.**

**\$455m paid in initial and reoccurring payments in the week ending 3 Oct 2021.**

Cumulative payments made by State since activation on 8 Jun 2021.

Date	Cumulative Payments (\$b)
12 Sep	\$1.65b
19 Sep	\$1.99b
26 Sep	\$2.36b
3 Oct	\$2.82b
5 Oct	\$2.84b

**Australian Capital Territory**  
Active lockdown since 12 Aug

**64,000 people have received at least one COVID Disaster Payment.**

**\$262.2m paid out as at 5 Oct 2021.**

**\$37m paid in initial and reoccurring payments in the week ending 3 Oct 2021.**

Cumulative payments made by State since activation on 20 Aug 2021.

Date	Cumulative Payments (\$m)
12 Sep	\$146.5m
19 Sep	\$186.3m
26 Sep	\$224.5m
3 Oct	\$261.5m
5 Oct	\$262.2m

**Northern Territory**  
Lockdown from 18 – 20 Jul  
Claiming period ended 13 Sep

**5,789 people have received at least one COVID Disaster Payment.**

**\$3.75m paid out as at 5 Oct 2021.**

**\$5,000 paid in initial payments in the week ending 3 Oct 2021.**

Cumulative payments made by State since activation on 25 Aug 2021.

Date	Cumulative Payments (\$m)
12 Sep	\$3.58m
19 Sep	\$3.74m
26 Sep	\$3.75m
3 Oct	\$3.75m
5 Oct	\$3.75m

**Queensland**  
Lockdown from 31 Jul – 11 Aug  
Claiming period ended 28 Aug

**196,000 people have received at least one COVID Disaster Payment.**

**\$252.5m paid out as at 5 Oct 2021.**

**\$24,000 paid in initial and reoccurring payments in the week ending 3 Oct 2021.**

Cumulative payments made by State since activation on 7 Aug 2021.

Date	Cumulative Payments (\$m)
12 Sep	\$252.3m
19 Sep	\$252.4m
26 Sep	\$252.5m
3 Oct	\$252.5m
5 Oct	\$252.5m

**South Australia**  
Lockdown from 21 – 27 Jul  
Claiming period ended 17 Aug

**86,000 people have received at least one COVID Disaster Payment.**

**\$48.2m paid out as at 5 Oct 2021.**

**\$1,000 paid in initial payments in the week ending 3 Oct 2021.**

Cumulative payments made by State since activation on 28 Jul 2021.

Date	Cumulative Payments (\$m)
12 Sep	\$48.2m
19 Sep	\$48.2m
26 Sep	\$48.2m
3 Oct	\$48.2m
5 Oct	\$48.2m