



**Australian Government**  
**Operation COVID Shield**

# COVID-19 Vaccine Roll-out

05 October 2021

Data as at:  
04 Oct 2021

## Total vaccine doses



**28,955,015** total vaccine  
doses administered nationally as at 04 October  
**+185,742** recorded in the last 24 hours



**16,483,098**

people have had at least one  
dose

**79.9%**

of people over the age of 16  
have had at least one dose



**11,827,707**

people are fully vaccinated

**57.4%**

of people over the age of 16 are  
fully vaccinated

**NSW**  
**10,439,459**  
(+22,152 daily  
increase)

**VIC**  
**7,652,537**  
(+96,337 daily  
increase)

**QLD**  
**4,973,774**  
(+19,251 daily  
increase)

**WA**  
**2,509,790**  
(+24,494 daily  
increase)

**TAS**  
**619,326**  
(+10,048 daily  
increase)

**SA**  
**1,767,376**  
(+7,107 daily  
increase)

**ACT**  
**715,531**  
(+4,845 daily  
increase)

**NT**  
**277,222**  
(+1,508 daily  
increase)

\*Administration state breakdown indicates state in which a vaccine was administered

\*\*Overall dose count includes instances of more than two doses per person in a small number of cases.

Source: Australian Immunisation Register

Data as at:  
04 Oct 2021

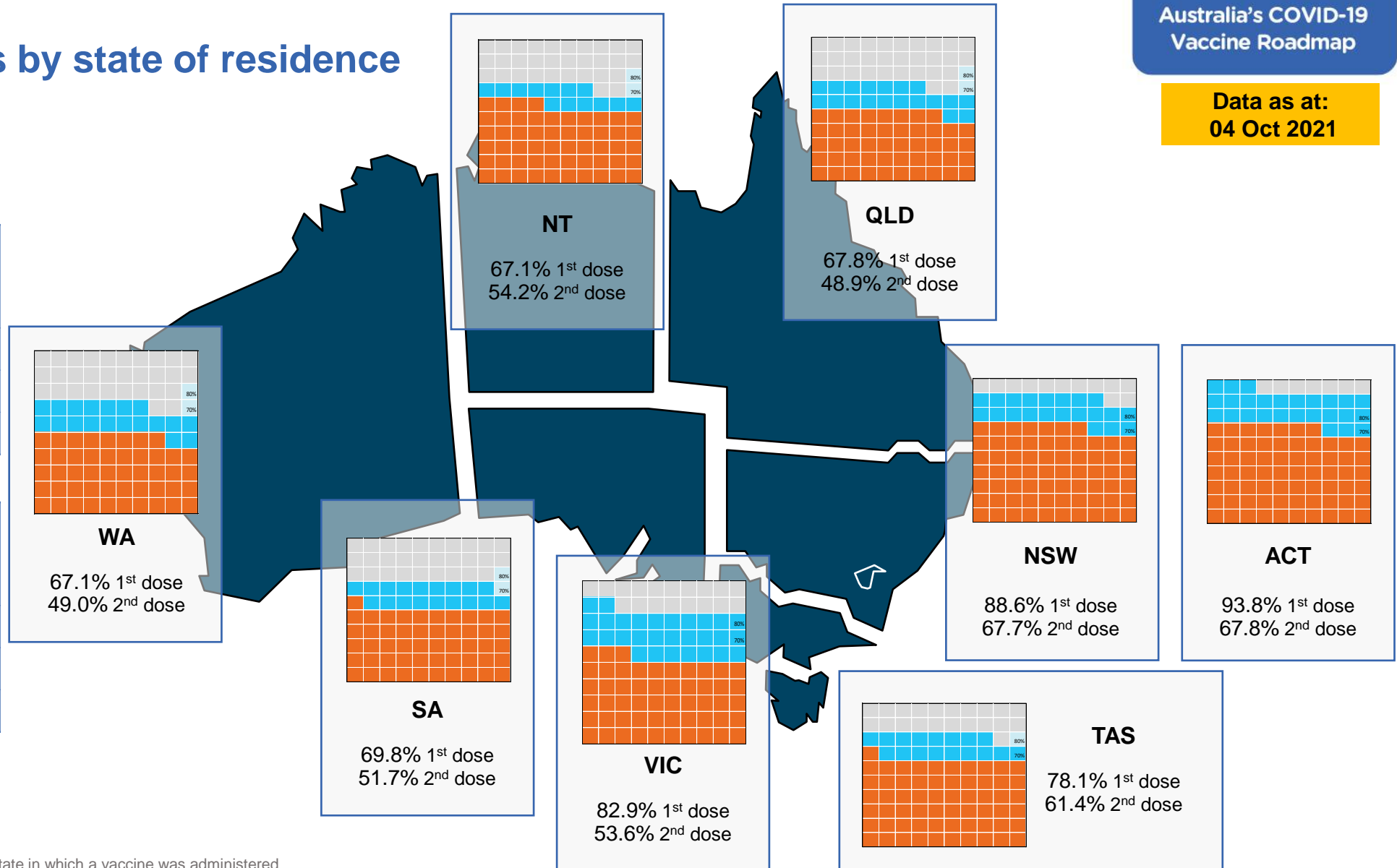
## Vaccinations by state of residence

### First doses

Age	Today	4 weeks ago	8 weeks ago
16+	79.9%	64.6%	45.5%
50+	90.3%	82.4%	70.5%
70+	95.4%	90.2%	83.2%

### Fully vaccinated

Age	Today	4 weeks ago	8 weeks ago
16+	57.4%	39.6%	23.8%
50+	73.2%	58.4%	34.1%
70+	79.9%	68.3%	49.4%



\*Residential state may differ from the state in which a vaccine was administered

## Commonwealth and Jurisdiction vaccine doses administered

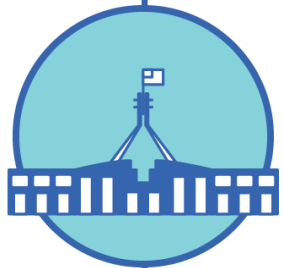
Data as at:  
04 Oct 2021



**28,955,015** total vaccine  
doses administered nationally as at 04 October  
**+ 185,742** recorded in the last 24 hours



**12,236,209**  
doses administered by state  
and territory facilities  
**+ 84,750**  
recorded in the last 24 hours



**16,718,806**  
doses administered by  
commonwealth facilities  
**+ 100,992**  
recorded in the last 24 hours

**15,703,751** total vaccine doses  
administered in primary care settings  
**1,015,055** total vaccine doses  
administered in aged care and disability  
settings

NSW	Jurisdictions	Commonwealth
Cumulative	3,643,623	6,795,836
Daily increase	8,512	13,640

VIC	Jurisdictions	Commonwealth
Cumulative	3,655,730	3,996,807
Daily increase	34,572	61,765

QLD	Jurisdictions	Commonwealth
Cumulative	2,038,929	2,934,845
Daily increase	12,963	6,288

WA	Jurisdictions	Commonwealth
Cumulative	1,219,855	1,289,935
Daily increase	10,132	14,362

TAS	Jurisdictions	Commonwealth
Cumulative	342,101	277,225
Daily increase	7,343	2,705

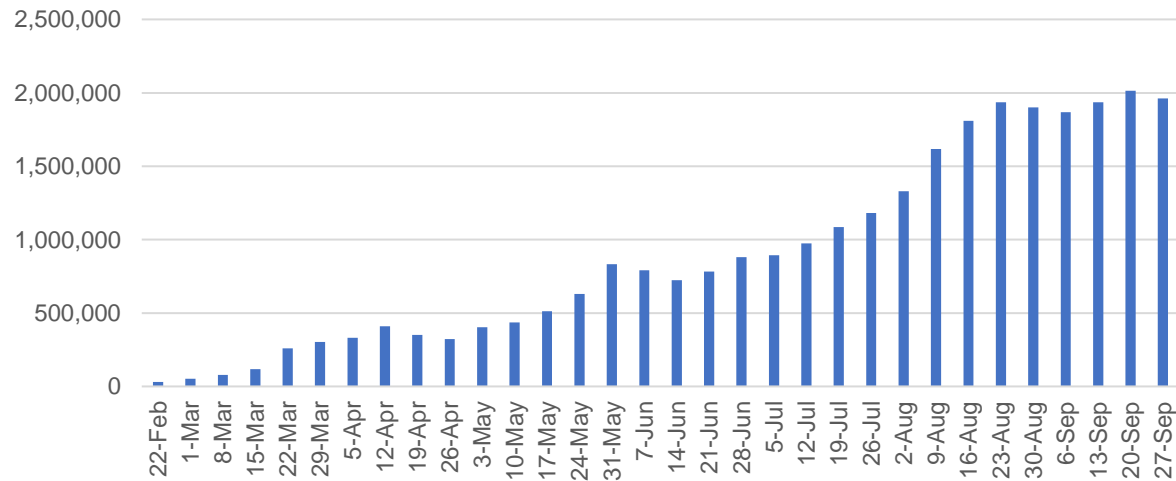
SA	Jurisdictions	Commonwealth
Cumulative	816,520	950,856
Daily increase	6,337	770

ACT	Jurisdictions	Commonwealth
Cumulative	352,192	363,339
Daily increase	4,167	678

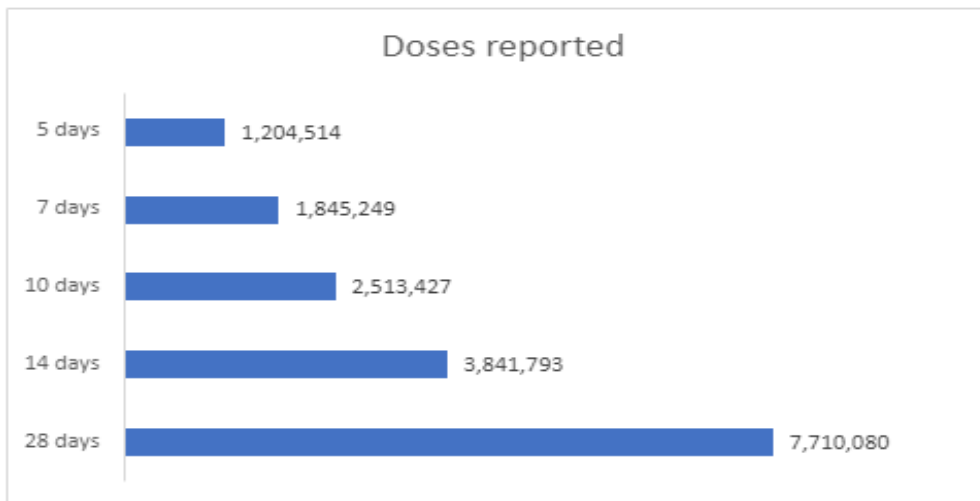
NT	Jurisdictions	Commonwealth
Cumulative	167,259	109,963
Daily increase	724	784

# Vaccine milestone charts

Jabs in arms by week



Doses reported

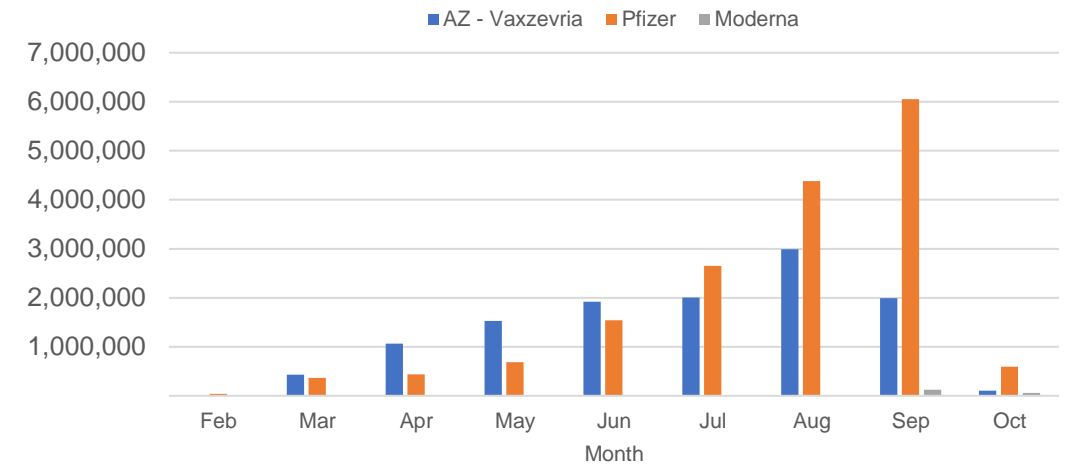


\*Sourced from the Australian Immunisation Register.

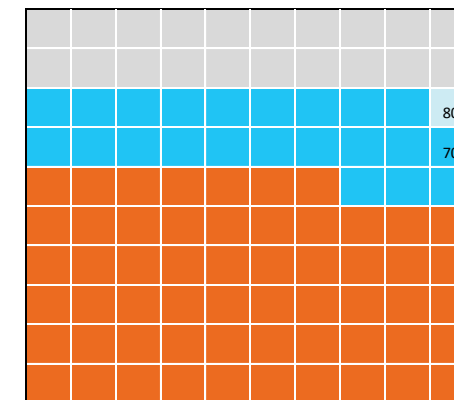
Data as at:  
04 Oct 2021

Australia's COVID-19  
Vaccine Roadmap

Doses by administration month and vaccine type



Eligible population percentage coverage



1st dose: 79.9% 2nd dose: 57.4%

\*Each square represents 1% of the national population. Squares are filled as milestones are achieved.

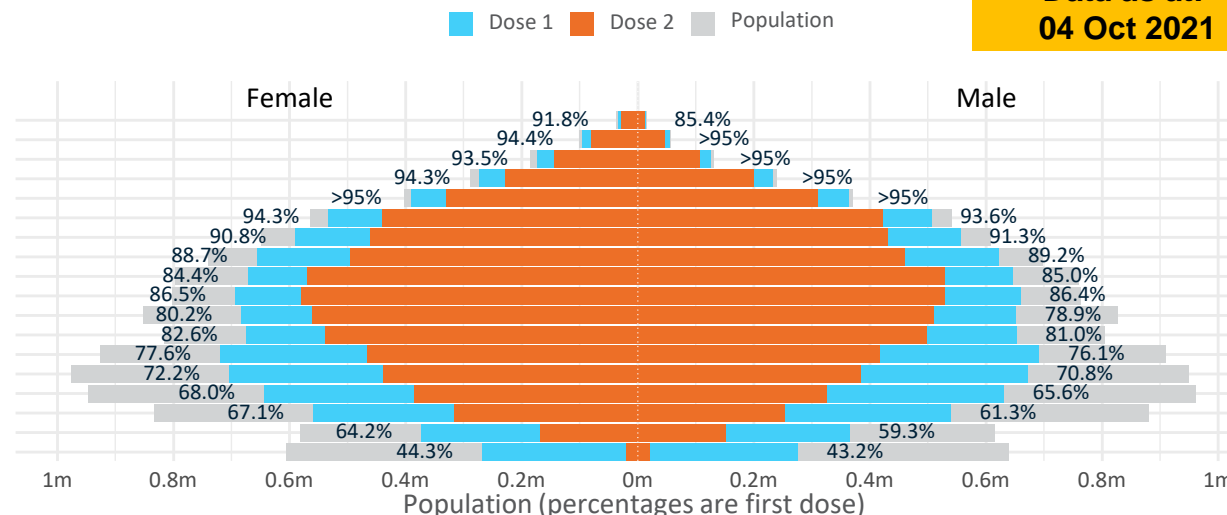
Data as at:  
04 Oct 2021

# Doses by age and sex

First and second doses by age and sex

	16+	50+	70+	12-15
Dose 1	<b>79.94%</b> (16,483,098 doses / 20,619,959 people)	<b>90.26%</b> (7,897,252 doses / 8,749,703 people)	<b>&gt;95%</b> (2,798,422 doses / 2,934,706 people)	<b>43.73%</b> (543,938 doses / 1,243,990 people)
Dose 2	<b>57.36%</b> (11,827,707 doses / 20,619,959 people)	<b>73.18%</b> (6,403,154 doses / 8,749,703 people)	<b>79.94%</b> (2,346,112 doses / 2,934,706 people)	<b>3.31%</b> (41,187 doses / 1,243,990 people)

Age	Dose 1	Dose 2
95+	47,664 (90.1%)	39,794 (75.2%)
90-94	150,499 (95.0%)	126,071 (79.6%)
85-89	299,873 (94.8%)	250,809 (79.3%)
80-84	505,813 (>95%)	426,971 (80.8%)
75-79	755,058 (>95%)	639,816 (82.7%)
70-74	1,039,515 (94.1%)	862,651 (78.1%)
65-69	1,146,829 (91.2%)	891,902 (70.9%)
60-64	1,279,718 (89.1%)	956,627 (66.6%)
55-59	1,318,595 (84.8%)	1,099,640 (70.7%)
50-54	1,353,688 (86.5%)	1,108,873 (70.9%)
45-49	1,335,001 (79.6%)	1,070,513 (63.8%)
40-44	1,327,952 (82.0%)	1,037,750 (64.1%)
35-39	1,414,771 (77.1%)	885,910 (48.3%)
30-34	1,382,347 (71.9%)	825,608 (42.9%)
25-29	1,283,712 (67.3%)	713,455 (37.4%)
20-24	1,104,054 (64.5%)	571,484 (33.4%)
16-19	738,009 (61.7%)	319,833 (26.7%)
12-15	543,938 (43.7%)	41,187 (3.3%)



	AUS	ACT	NSW	NT	QLD	SA	TAS	VIC	WA
16 and over - dose 1	16,483,098	322,864	5,815,075	127,791	2,786,936	1,004,837	343,818	4,485,250	1,419,894
16 and over - dose 2	11,827,707	233,267	4,442,925	103,246	2,010,839	744,403	270,219	2,896,816	1,035,941
16 and over - population	20,619,959*	344,037	6,565,651	190,571	4,112,707	1,440,400	440,172	5,407,574	2,114,978
16 and over % with dose 1	79.94%	93.85%	88.57%	67.06%	67.76%	69.76%	78.11%	82.94%	67.14%
16 and over % with dose 2	57.36%	67.80%	67.67%	54.18%	48.89%	51.68%	61.39%	53.57%	48.98%
50 and over - dose 1	7,897,252	129,747	2,658,912	48,438	1,482,779	572,311	195,248	2,017,193	743,914
50 and over - dose 2	6,403,154	113,218	2,215,100	40,704	1,170,141	445,298	164,405	1,636,031	585,434
50 and over - population	8,749,703	127,802	2,807,793	62,280	1,758,855	674,384	220,036	2,211,211	885,370
50 and over % with dose 1	90.26%	>95%	94.70%	77.77%	84.30%	84.86%	88.73%	91.23%	84.02%
50 and over % with dose 2	73.18%	88.59%	78.89%	65.36%	66.53%	66.03%	74.72%	73.99%	66.12%
70 and over - dose 1	2,798,422	42,278	940,628	10,380	532,221	221,765	73,295	701,408	256,625
70 and over - dose 2	2,346,112	37,384	806,507	8,752	442,063	176,757	62,622	588,822	208,157
70 and over - population	2,934,706	39,946	962,606	12,343	577,767	240,514	77,155	743,519	280,281
70 and over % with dose 1	>95%	>95%	>95%	84.10%	92.12%	92.20%	>95%	94.34%	91.56%
70 and over % with dose 2	79.94%	93.59%	83.78%	70.91%	76.51%	73.49%	81.16%	79.19%	74.27%
12 to 15 - dose 1	543,938	14,168	228,932	4,257	76,664	16,501	5,280	169,151	25,799
12 to 15 - dose 2	41,187	758	22,135	1,856	7,186	684	804	6,428	1,061
12 to 15 - population	1,243,990	19,693	390,330	13,060	270,146	82,747	26,308	308,611	132,869
12 to 15 % with dose 1	43.73%	71.94%	58.65%	32.60%	28.38%	19.94%	20.07%	54.81%	19.42%
12 to 15 % with dose 2	3.31%	3.85%	5.67%	14.21%	2.66%	0.83%	3.06%	2.08%	0.80%

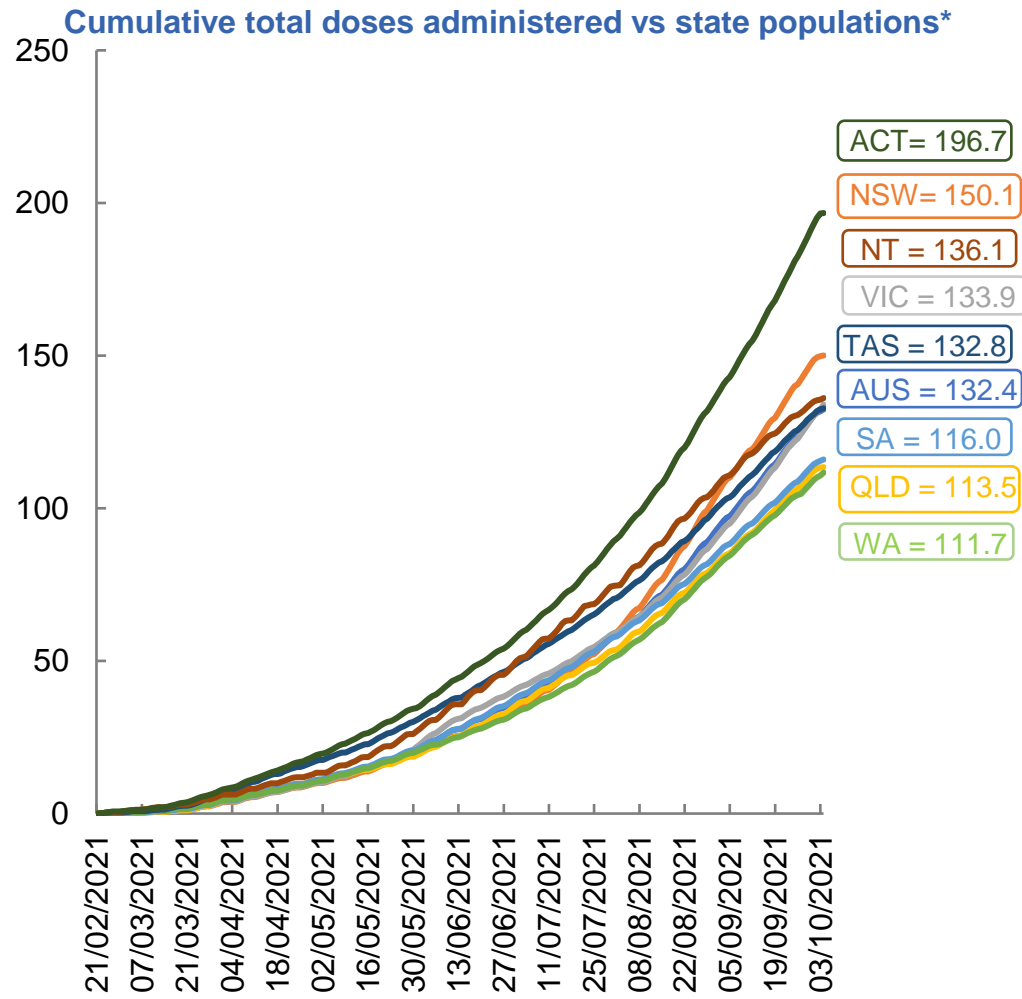
\*National population will not equal sum of listed jurisdictions due to a small number of people counted in national population residing in some 'other' territories. Sum of state doses will not add to national total as some records are unable to be geocoded to a State or Territory.

Doses sourced from Australian Immunisation Register, population from ABS ERP June 2020

# Vaccinations by location

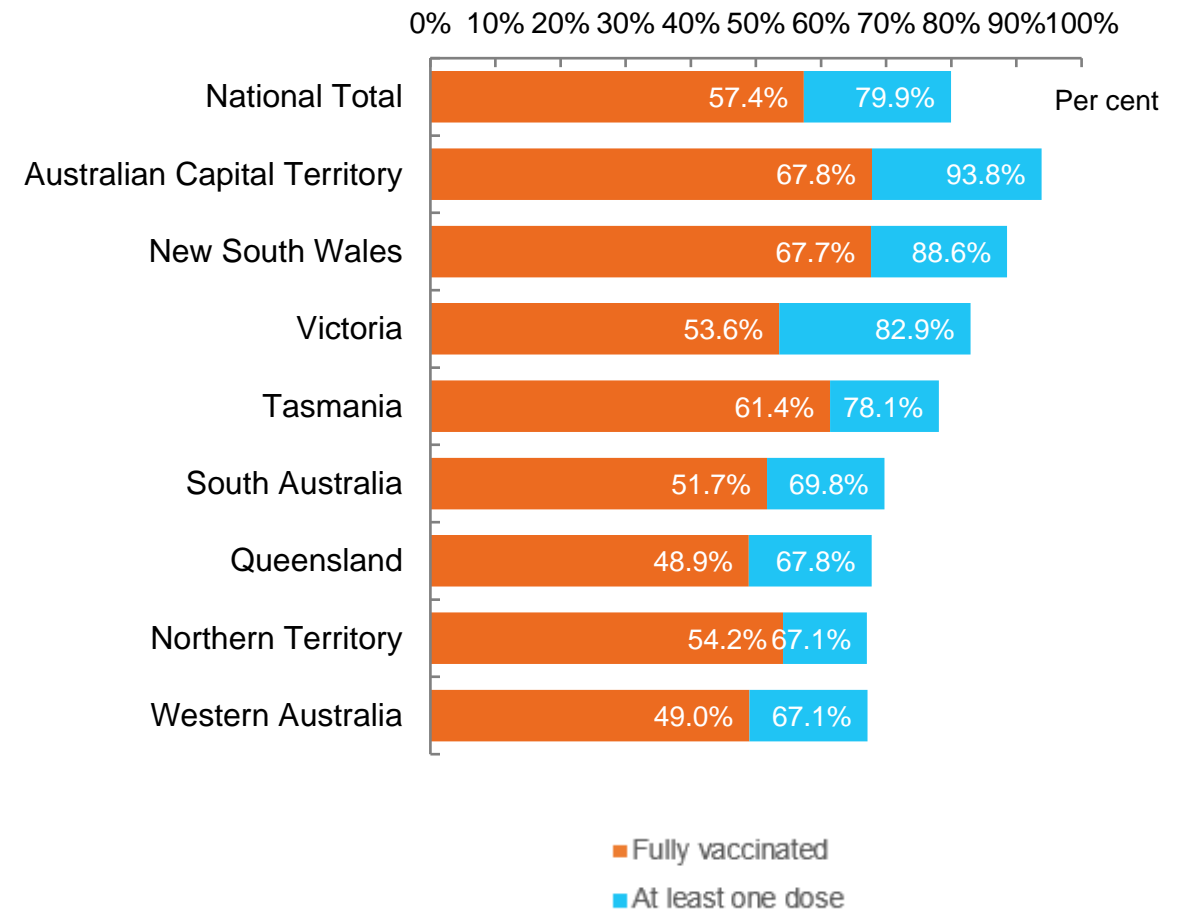
Data as at:  
04 Oct 2021

Australia's COVID-19  
Vaccine Roadmap



\*Not an indication of percentage vaccinated, numbers will exceed 100 due to multiple doses required per person of the population

## First and Second Doses by state of residence





# Aboriginal and Torres Strait Islander peoples

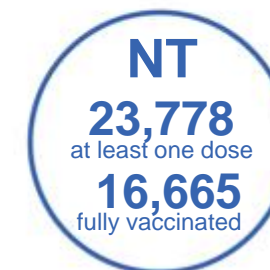
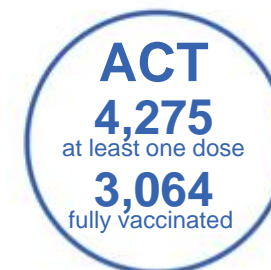
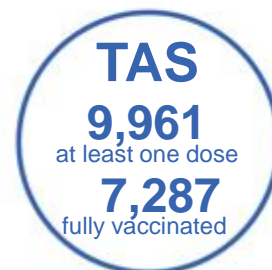
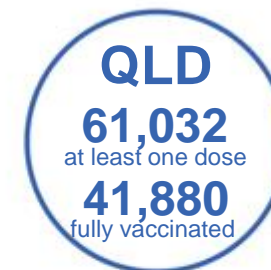
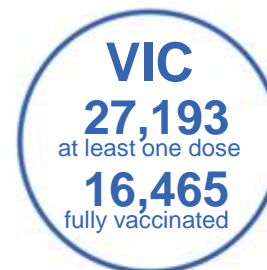
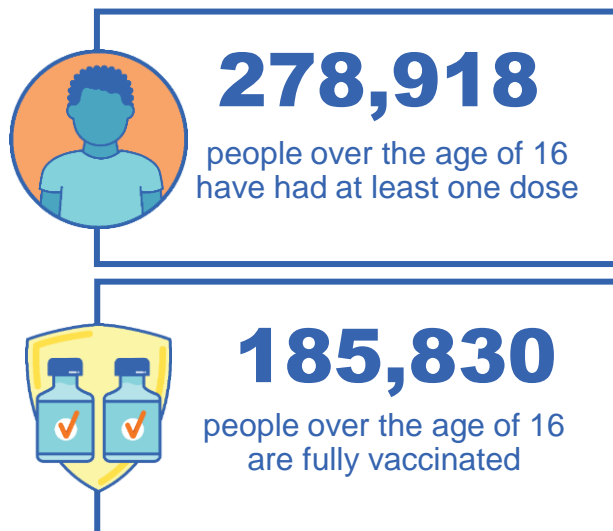
## Number of people vaccinated

Data as at:  
03 Oct 2021  
Updated weekly

Australia's COVID-19  
Vaccine Roadmap

### 167 Aboriginal community controlled health services (ACCHS)

0#	48	26	39	12	3	21	18
ACT	NSW	NT	QLD	SA	TAS	VIC	WA



**7,518** people with at least one dose  
**4,319** people fully vaccinated

residing in other territories or with missing residential information  
Source: Australian Immunisation Register

\*Identifying as Aboriginal and Torres Strait Islander is optional and the estimated population may be under reported.

\*\*Includes all Aboriginal and Torres Strait Islander peoples who have received a vaccination, not limited to those administered in an ACCHS setting

\*\*\*Updated weekly.

#ACCHS in the ACT are currently operating as a Commonwealth Vaccine Clinics so not included to avoid double counting



Data as at:  
04 Oct 2021

# Commonwealth primary care



## Primary care vaccine administration sites

<b>5,529</b>	<b>137</b>	<b>167</b>	<b>3,329</b>
GPs	CVCs	ACCHS	Pharmacies



**15,703,751** total vaccine doses administered primary care settings as at 04 October  
**+ 98,632** recorded in the last 24 hours

## Primary care vaccinations by provider type

	Doses administered	Daily increase	7 day increase
General Practice* includes other Commonwealth	14,793,885	79,342	901,077
Pharmacy	909,866	19,290	187,847



**86,552** doses administered to persons residing in other territories or with missing residential information

\*General practice includes Commonwealth Vaccination Clinics, Aboriginal Community Health Centres, Royal Flying Doctor Service and other Commonwealth vaccination facilities

Source: Australian Immunisation Register

Data as at:  
04 Oct 2021

# Commonwealth aged care and disability doses administered



**1,015,055** (+ 2,360 last 24 hours)

Total vaccine doses administered in aged care and disability facilities as at 04 October

Number of doses administered as part of the Commonwealth aged and disability care rollout

**NSW**  
**473,966**  
(+242 daily increase)

**VIC**  
**183,955**  
(+188 daily increase)

**QLD**  
**177,962**  
(+1,830 daily increase)

**WA**  
**63,656**  
(+12 daily increase)

**TAS**  
**16,724**  
(+9 daily increase)

**SA**  
**57,315**  
(+45 daily increase)

**ACT**  
**12,044**  
(+48 daily increase)

**NT**  
**5,684**  
(+0 daily increase)

\*Sourced from the Australian Immunisation Register. Includes all persons vaccinated at participating residential aged care, disability and related industry settings.

\*\*State level breakdown indicates the residential location and may not align to the state in which the vaccination occurred.

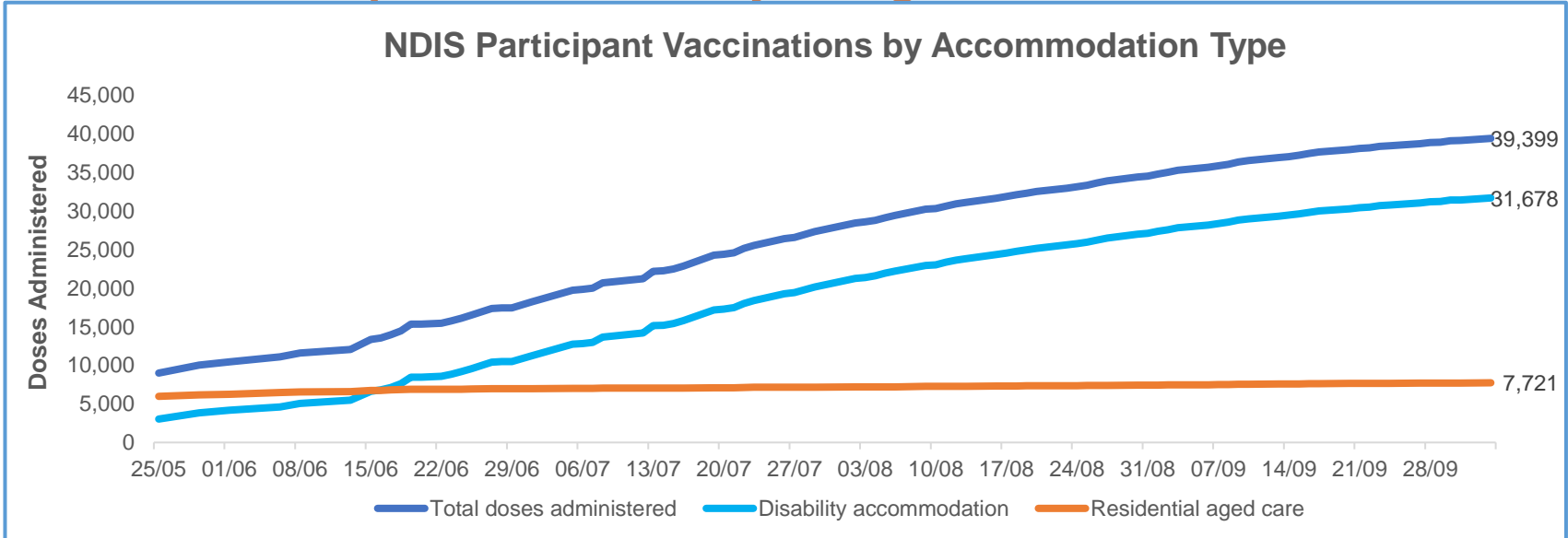
**23,749**

doses administered to persons residing in other territories or with missing residential information

Data as at:  
04 Oct 2021\*

# Vaccination rate of people with disability and the disability workforce

## Phase 1a – People with disability living in shared accommodation



	Total people with at least one dose	People fully vaccinated	Total number of individuals in cohort	Total doses administered	% People with at least one dose	% People fully vaccinated
NDIS participants living in shared accommodation **	20,795	18,604	27,293	39,399	76.2%	68.2%
NDIS screened workers ***	156,403	129,205	206,065	285,608	75.9%	62.7%

\* Updates are available Monday to Friday on participants, and bi-weekly for workers, numbers may be up to four days old.

\*\* Shared accommodation means two or more people with disability living in shared residential accommodation and NDIS participants living in Residential Aged Care accommodation as per the eligibility criteria of Phase 1a.

\*\*\* Total number of workers within the NDIS Commission Worker Screening database who have ever been successfully screened and linked to an NDIS registered provider or participant.

Source: Linkage between National Disability Insurance Agency data, NDIS Quality and Safeguards Commission data and the Australian Immunisation Register.



## Residential aged care vaccination rollout

### Residential aged care facilities status

**100%** Commonwealth facilities visited (2,573 planned sites)

**161,294** People fully vaccinated

**90.2%** Participation rate

Australia's COVID-19 Vaccine Roadmap

Data as at:  
04 October 2021

### Aged care resident vaccinations



### Aged care worker vaccinations

Jurisdictions	Total workers with at least one dose	Workers fully vaccinated	% Workers with at least one dose	% Workers fully vaccinated
NSW	78,326	68,215	99.6%	86.7%
VIC	70,914	60,987	99.1%	85.2%
QLD	47,305	38,174	99.2%	80.0%
SA	26,769	22,942	99.6%	85.4%
WA	23,193	17,769	99.6%	76.3%
TAS	7,481	6,401	99.9%	85.4%
NT	801	769	99.3%	95.3%
ACT	2,929	2,642	100.0%	90.2%
<b>Total</b>	<b>257,718</b>	<b>217,899</b>	<b>99.4%</b>	<b>84.0%</b>

Source: My Aged Care Portal staff vaccination progress

\*\*Resident vaccination information is reported manually by service providers

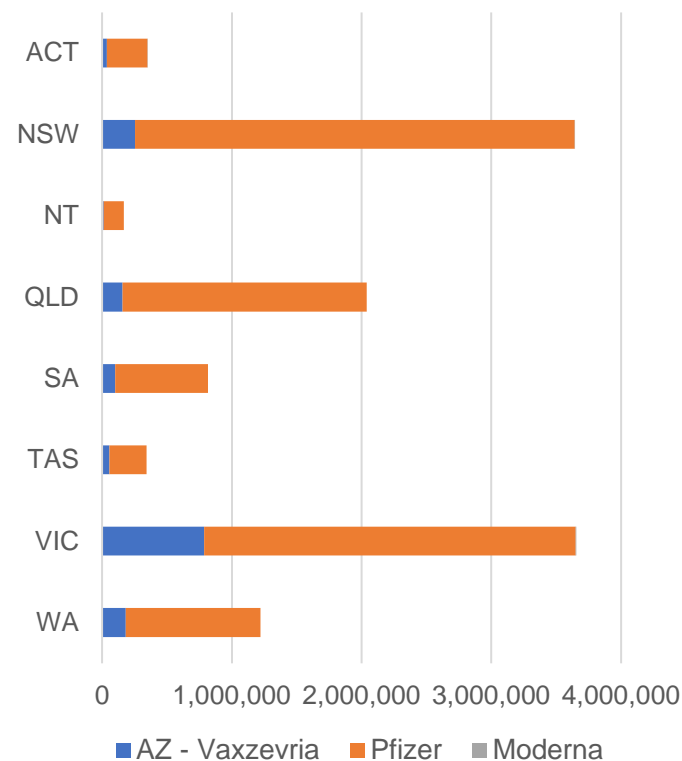
\*Status updates are provided by facilities at least once per week. Reporting is updated Monday to Friday to encompass different facility updates being made on different days.

Data is sourced directly from Aged Care Service Providers and is not drawn or closely aligned with data from AIR due to inconsistencies and potential lags in uploading of records.

Data as at:  
04 Oct 2021

# Jurisdiction administered

Total vaccine doses administered in State and Territory clinics as at 04 October



**12,236,209** total vaccine doses administered  
in State and Territory clinics as at 04 October  
+ **84,750** recorded in the last 24 hours  
+ **714,866** recorded in the last 7 days

**NSW**  
**3,643,623**  
(+8,512 daily  
increase)

**VIC**  
**3,655,730**  
(+34,572 daily  
increase)

**QLD**  
**2,038,929**  
(+12,963 daily  
increase)

**WA**  
**1,219,855**  
(+10,132 daily  
increase)

**TAS**  
**342,101**  
(+7,343 daily  
increase)

**SA**  
**816,520**  
(+6,337 daily  
increase)

**ACT**  
**352,192**  
(+4,167 daily  
increase)

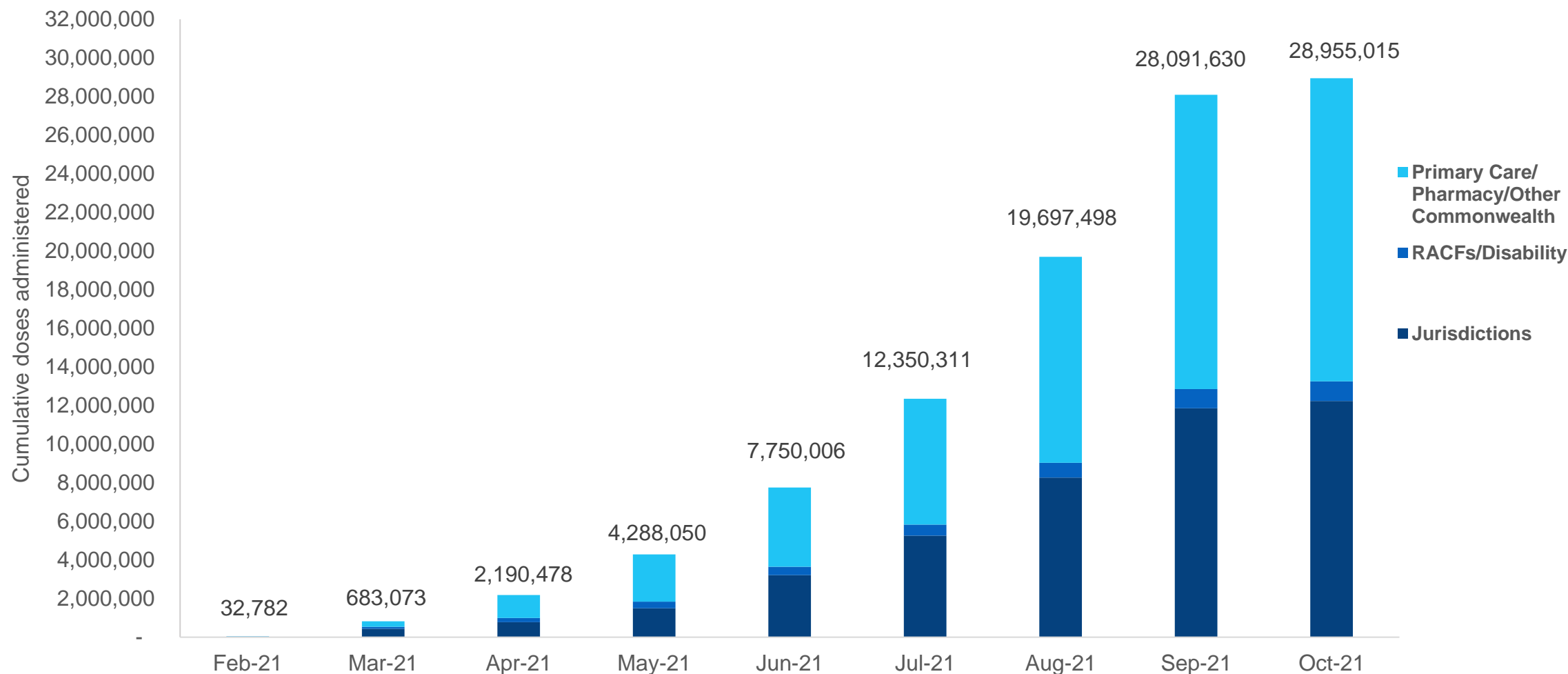
**NT**  
**167,259**  
(+724 daily  
increase)

\*Sourced from the Australian Immunisation Register and self-reported data. Numbers are calculated as difference in daily cumulative reported numbers to allow for historical corrections in all self-reported data sources.

# Cumulative doses administered by channel

Data as at:  
04 Oct 2021

Australia's COVID-19  
Vaccine Roadmap



Source: Australian Immunisation Register

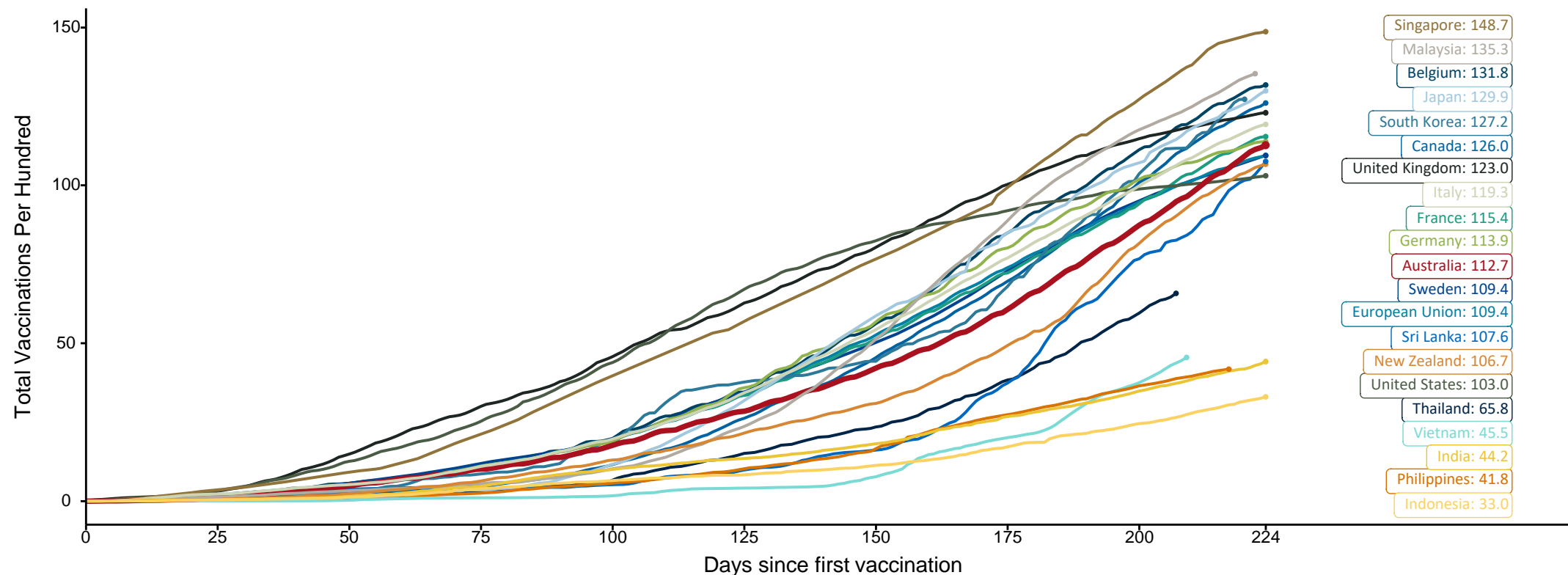


# Doses at equivalent stages of rollout (Day 224)

Data as at:  
04 Oct 2021

The x-axis is truncated at the length of Australia's vaccination program. Countries with intermittent reporting have had their doses per 100 imputed to Australia's current stage of rollout. Israel excluded as it is beyond scale of the graph

Cumulative doses administered (04 Oct): **28,955,015**



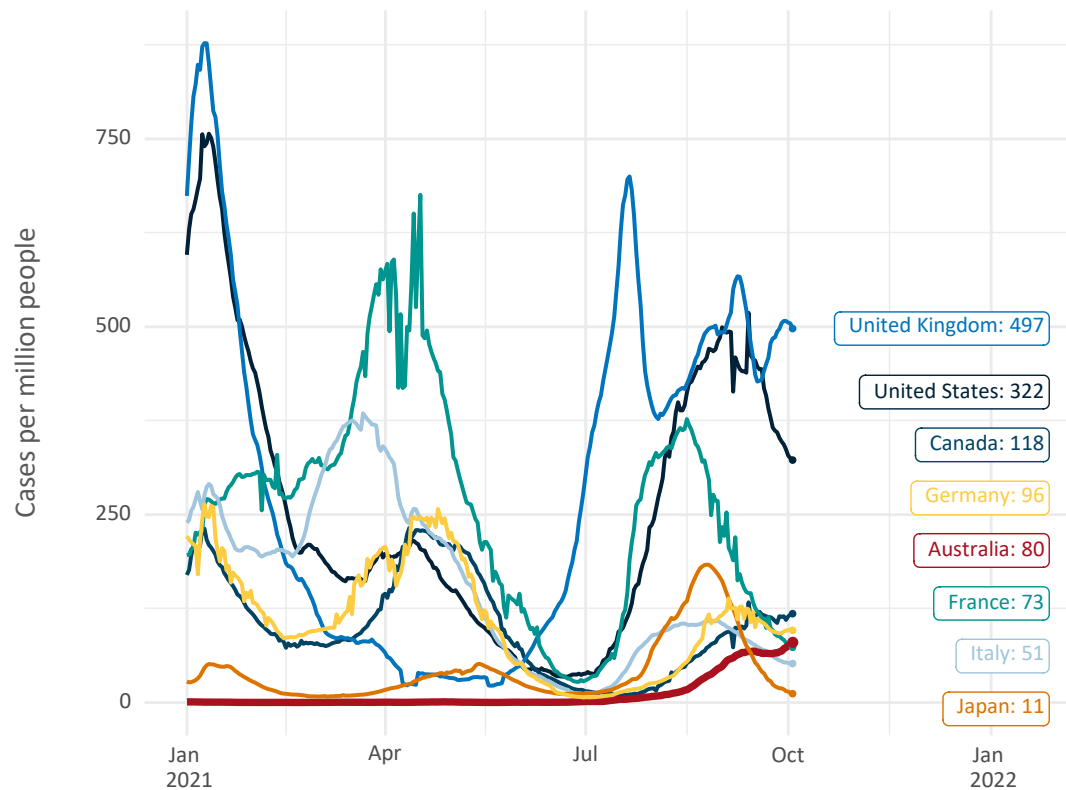
Note: From 15 September 2021, data for Australia includes all doses administered to people 12 and over. Prior to 15 September, data was for 16 and over  
Source: Department of Health (Australia), Our World in Data (international)  
Latest data: 04 October



# International data – COVID-19

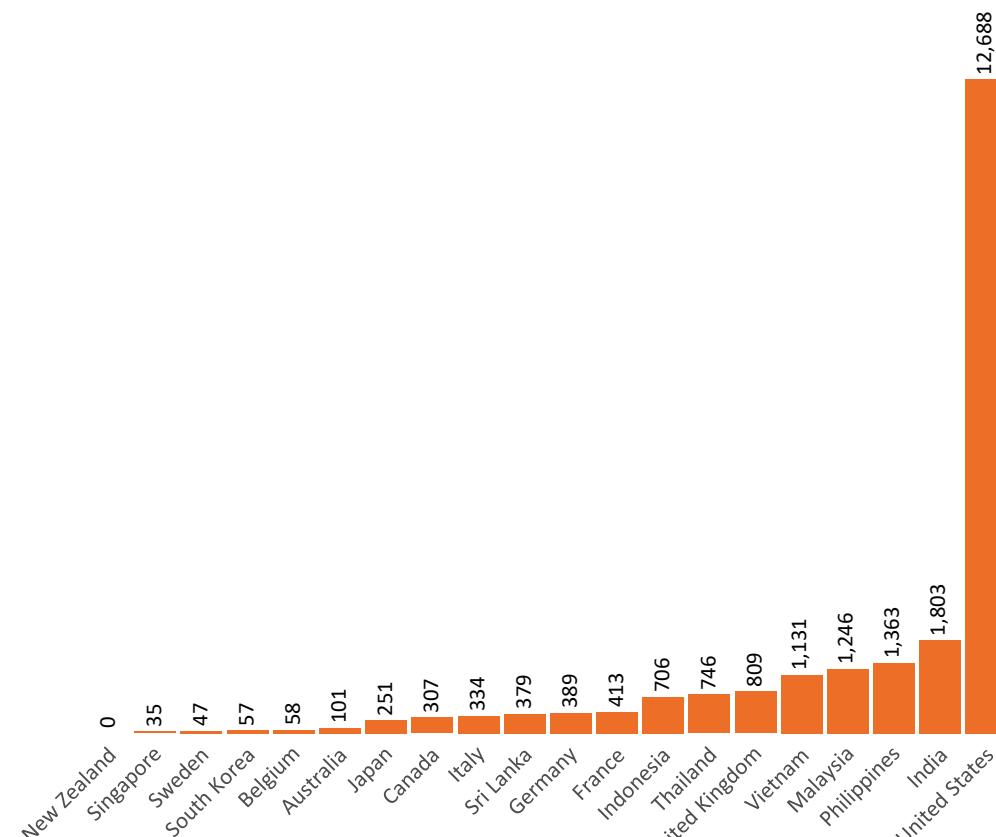
Data as at:  
04 Oct 2021

New daily cases per million in 2021, Australia and G7 countries  
Smoothed - 7 day average



Source: OWID  
Data downloaded: 05 Oct 2021 08:37  
Latest data: 03 Oct 2021

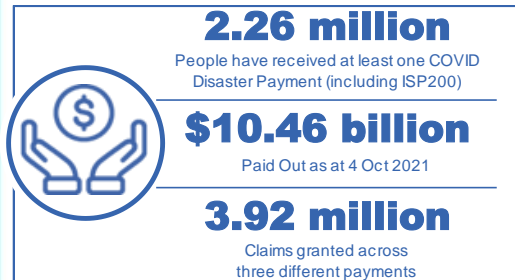
COVID-19 deaths in past 7 days - Australia and select countries



Source: OWID  
Data downloaded: 05 Oct 2021 08:37  
Latest data: 03 Oct 2021

Data as at midnight:  
4 Oct 2021

# Pandemic Response Payments



<b>COVID Disaster Payment:</b>	3.84 million claims received - 2.09 million individuals paid a total of \$10.14 billion.
<b>\$200 Income Support Payment:</b>	243,000 claims received - 170,000 individuals paid a total of \$210.50 million.
<b>Pandemic Leave Disaster Payment:</b>	80,000 claims received - 69,000 individuals paid a total of \$110.10 million.



**COVID Disaster Payment**  
assisting during a lockdown event in a Commonwealth hotspot.

**Income Support Payment \$200**  
for income support recipients who lost at least 8 hours of work.

**Pandemic Leave Disaster Payment**  
for those who have to self-isolate, quarantine or care.

For more information visit:  
[servicesaustralia.gov.au](https://servicesaustralia.gov.au)

## COVID-19 DISASTER PAYMENTS

### New South Wales

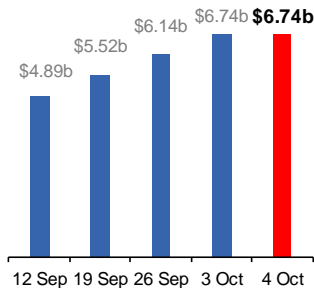
Active lockdown since 24 Jun

**1.06m people have received at least one COVID Disaster Payment.**

**\$6.74b paid out as at 4 Oct 2021.**

**\$599m paid in initial and reoccurring payments in the week ending 3 Oct 2021.**

Cumulative payments made by State since activation on 1 Jul 2021.



### Victoria

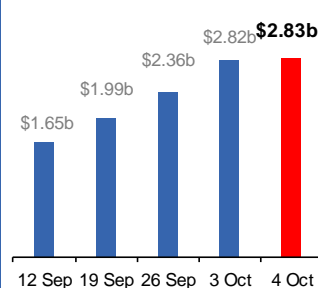
Active lockdown (#6) since 6 Aug

**677,000 people have received at least one COVID Disaster Payment.**

**\$2.83b paid out as at 4 Oct 2021.**

**\$455m paid in initial and reoccurring payments in the week ending 3 Oct 2021.**

Cumulative payments made by State since activation on 8 Jun 2021.



### Australian Capital Territory

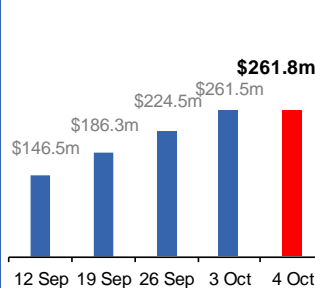
Active lockdown since 12 Aug

**64,000 people have received at least one COVID Disaster Payment.**

**\$261.8m paid out as at 4 Oct 2021.**

**\$37m paid in initial and reoccurring payments in the week ending 3 Oct 2021.**

Cumulative payments made by State since activation on 20 Aug 2021.



### Northern Territory

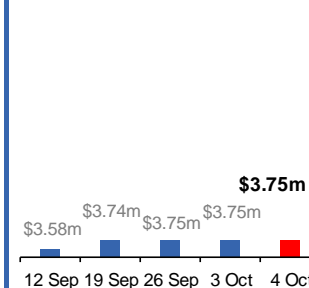
Lockdown from 18 – 20 Jul  
Claiming period ended 13 Sep

**5,789 people have received at least one COVID Disaster Payment.**

**\$3.75m paid out as at 4 Oct 2021.**

**\$5,000 paid in initial payments in the week ending 3 Oct 2021.**

Cumulative payments made by State since activation on 25 Aug 2021.



### Queensland

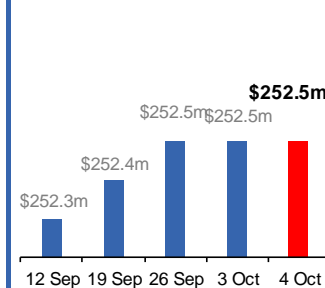
Lockdown from 31 Jul – 11 Aug  
Claiming period ended 28 Aug

**196,000 people have received at least one COVID Disaster Payment.**

**\$252.5m paid out as at 4 Oct 2021.**

**\$24,000 paid in initial and reoccurring payments in the week ending 3 Oct 2021.**

Cumulative payments made by State since activation on 7 Aug 2021.



### South Australia

Lockdown from 21 – 27 Jul  
Claiming period ended 17 Aug

**86,000 people have received at least one COVID Disaster Payment.**

**\$48.2m paid out as at 4 Oct 2021.**

**\$1,000 paid in initial payments in the week ending 3 Oct 2021.**

Cumulative payments made by State since activation on 28 Jul 2021.

