



Australian Government
Operation COVID Shield

COVID-19 Vaccine Roll-out

04 October 2021

Data as at:
03 Oct 2021

Total vaccine doses



28,769,273 total vaccine
doses administered nationally as at 03 October
+138,537 recorded in the last 24 hours



16,414,917

people have had at least one
dose

79.6%

of people over the age of 16
have had at least one dose



11,729,623

people are fully vaccinated

56.9%

of people over the age of 16 are
fully vaccinated

NSW
10,417,307
(+29,762 daily
increase)

VIC
7,556,200
(+50,017 daily
increase)

QLD
4,954,523
(+27,089 daily
increase)

WA
2,485,296
(+15,327 daily
increase)

TAS
609,278
(+805 daily
increase)

SA
1,760,269
(+8,671 daily
increase)

ACT
710,686
(+6,230 daily
increase)

NT
275,714
(+636 daily
increase)

*Administration state breakdown indicates state in which a vaccine was administered

**Overall dose count includes instances of more than two doses per person in a small number of cases.

Source: Australian Immunisation Register

Data as at:
03 Oct 2021

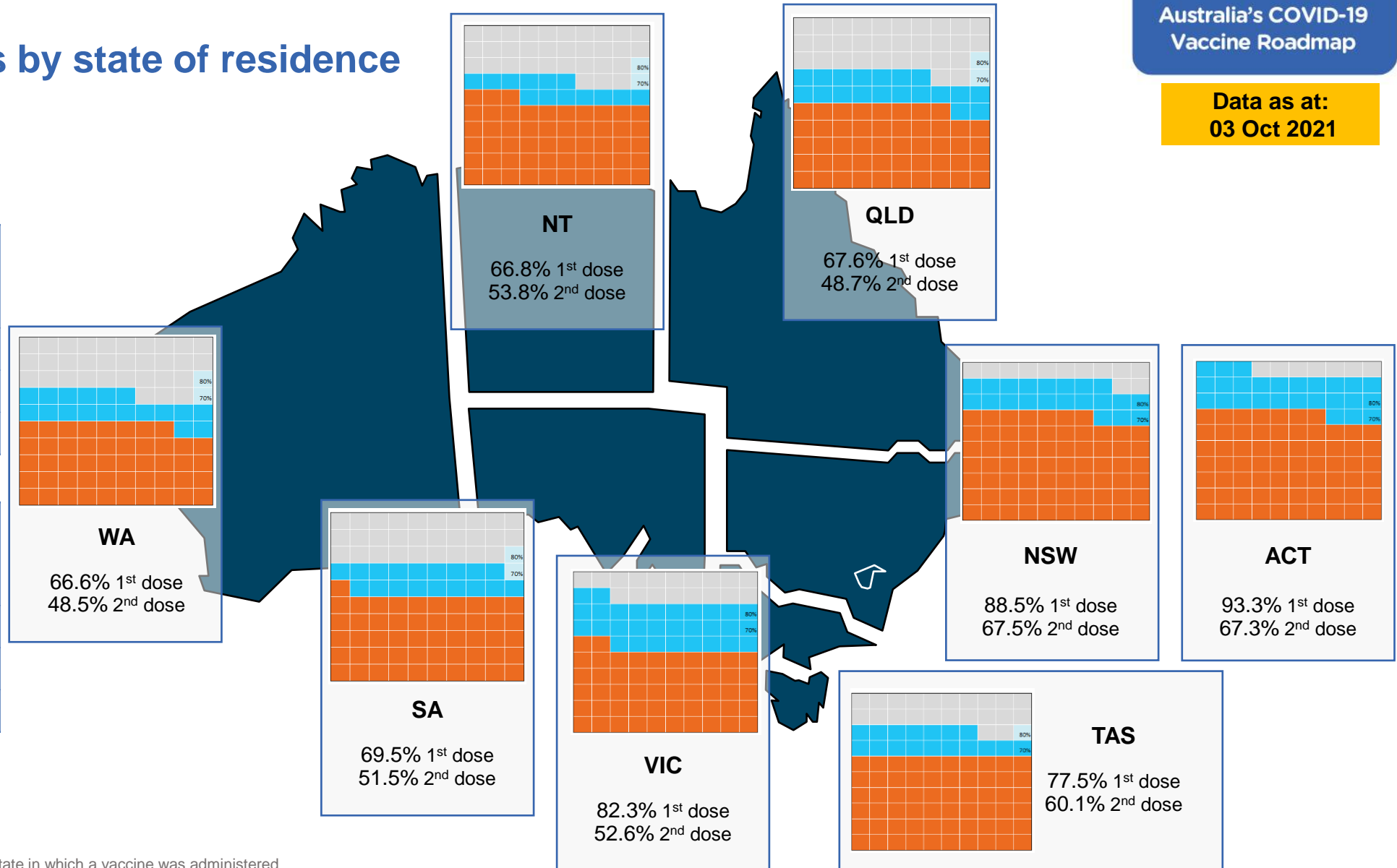
Vaccinations by state of residence

First doses

Age	Today	4 weeks ago	8 weeks ago
16+	79.6%	64.0%	45.0%
50+	90.1%	81.9%	70.0%
70+	95.2%	89.9%	82.9%

Fully vaccinated

Age	Today	4 weeks ago	8 weeks ago
16+	56.9%	39.0%	23.2%
50+	72.9%	57.7%	33.2%
70+	79.8%	67.8%	48.7%



*Residential state may differ from the state in which a vaccine was administered

Commonwealth and Jurisdiction vaccine doses administered

Data as at:
03 Oct 2021



28,769,273 total vaccine
doses administered nationally as at 03 October
+ 138,537 recorded in the last 24 hours



12,151,459
doses administered by state
and territory facilities
+ 81,689
recorded in the last 24 hours



16,617,814
doses administered by
commonwealth facilities
+ 56,848
recorded in the last 24 hours

15,605,119 total vaccine doses
administered in primary care settings
1,012,695 total vaccine doses
administered in aged care and disability
settings

NSW	Jurisdictions	Commonwealth
Cumulative	3,635,111	6,782,196
Daily increase	11,036	18,726

VIC	Jurisdictions	Commonwealth
Cumulative	3,621,158	3,935,042
Daily increase	31,413	18,604

QLD	Jurisdictions	Commonwealth
Cumulative	2,025,966	2,928,557
Daily increase	17,978	9,111

WA	Jurisdictions	Commonwealth
Cumulative	1,209,723	1,275,573
Daily increase	10,060	5,267

TAS	Jurisdictions	Commonwealth
Cumulative	334,758	274,520
Daily increase	-2	807

SA	Jurisdictions	Commonwealth
Cumulative	810,183	950,086
Daily increase	6,345	2,326

ACT	Jurisdictions	Commonwealth
Cumulative	348,025	362,661
Daily increase	4,250	1,980

NT	Jurisdictions	Commonwealth
Cumulative	166,535	109,179
Daily increase	609	27

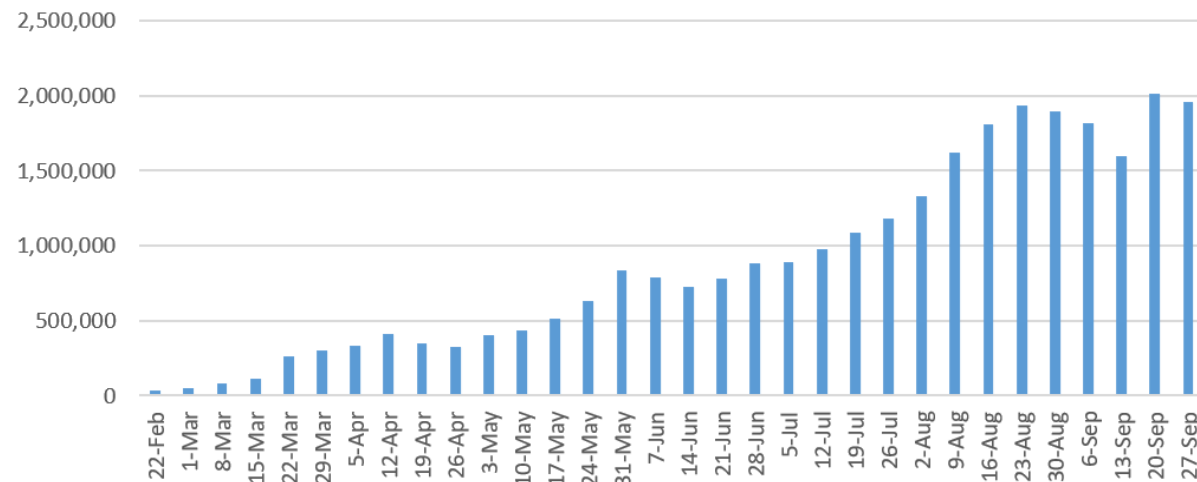
*Sourced from the Australian Immunisation Register. Numbers are calculated as difference in daily cumulative reported numbers to allow for historical corrections in all data sources. This can occasionally result in negative numbers, such as for Tasmania, where historical details about doses have been updated.

Vaccine milestone charts

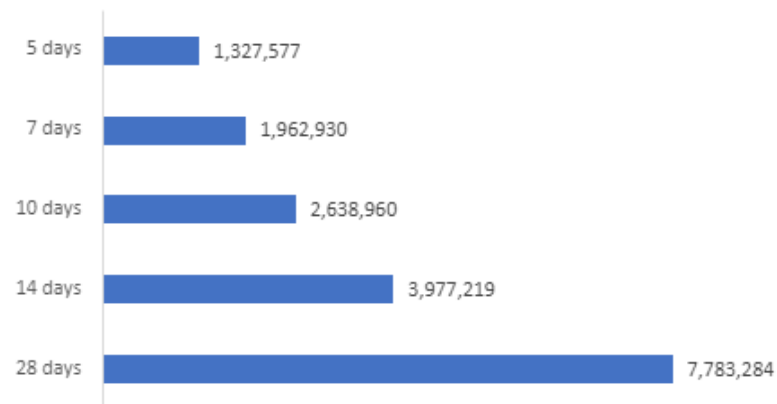
Data as at:
03 Oct 2021

Australia's COVID-19
Vaccine Roadmap

Jabs in arms by week

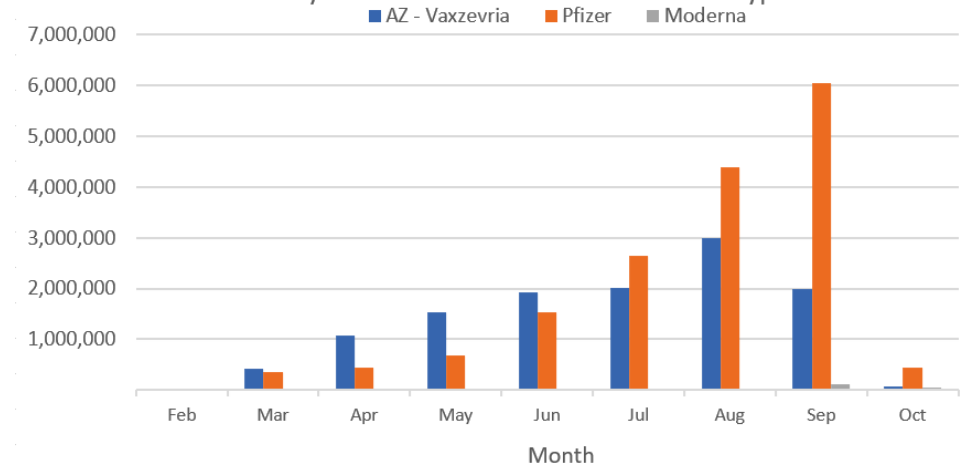


Doses reported

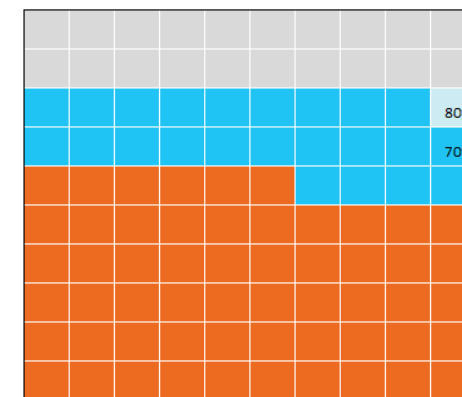


*Sourced from the Australian Immunisation Register.

Doses by administration month and vaccine type



Eligible population percentage coverage



1st dose: 79.6% 2nd dose: 56.9%

*Each square represents 1% of the national population. Squares are filled as milestones are achieved.

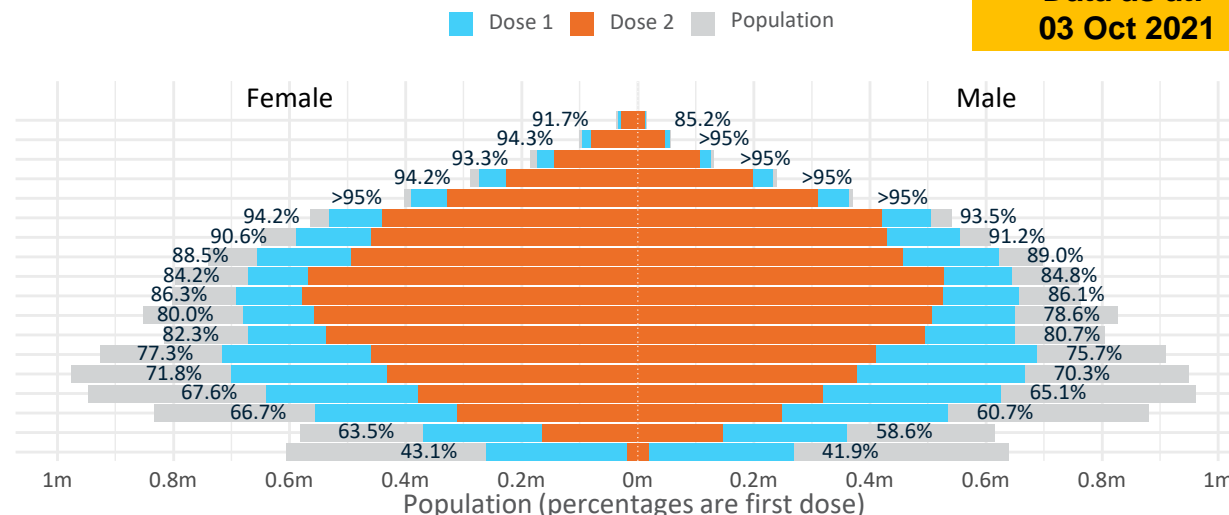
Data as at:
03 Oct 2021

Doses by age and sex

First and second doses by age and sex

	16+	50+	70+	12-15
Dose 1	79.61% (16,414,917 doses / 20,619,959 people)	90.07% (7,881,163 doses / 8,749,703 people)	95.22% (2,794,497 doses / 2,934,706 people)	42.52% (528,920 doses / 1,243,990 people)
Dose 2	56.88% (11,729,623 doses / 20,619,959 people)	72.92% (6,380,124 doses / 8,749,703 people)	79.76% (2,340,826 doses / 2,934,706 people)	2.99% (37,241 doses / 1,243,990 people)

Age	Dose 1	Dose 2
95+	47,584 (89.9%)	39,712 (75.1%)
90-94	150,309 (94.9%)	125,824 (79.4%)
85-89	299,448 (94.7%)	250,262 (79.1%)
80-84	505,100 (>95%)	426,019 (80.6%)
75-79	753,885 (>95%)	638,272 (82.5%)
70-74	1,038,171 (94.0%)	860,737 (77.9%)
65-69	1,144,606 (91.0%)	888,624 (70.6%)
60-64	1,276,819 (88.9%)	952,217 (66.3%)
55-59	1,315,524 (84.6%)	1,095,024 (70.4%)
50-54	1,349,717 (86.3%)	1,103,433 (70.5%)
45-49	1,330,549 (79.4%)	1,064,458 (63.5%)
40-44	1,323,126 (81.7%)	1,030,904 (63.6%)
35-39	1,407,349 (76.7%)	871,739 (47.5%)
30-34	1,373,798 (71.4%)	811,324 (42.2%)
25-29	1,274,160 (66.8%)	700,441 (36.7%)
20-24	1,094,917 (63.9%)	559,993 (32.7%)
16-19	729,855 (61.0%)	310,640 (26.0%)
12-15	528,920 (42.5%)	37,241 (3.0%)

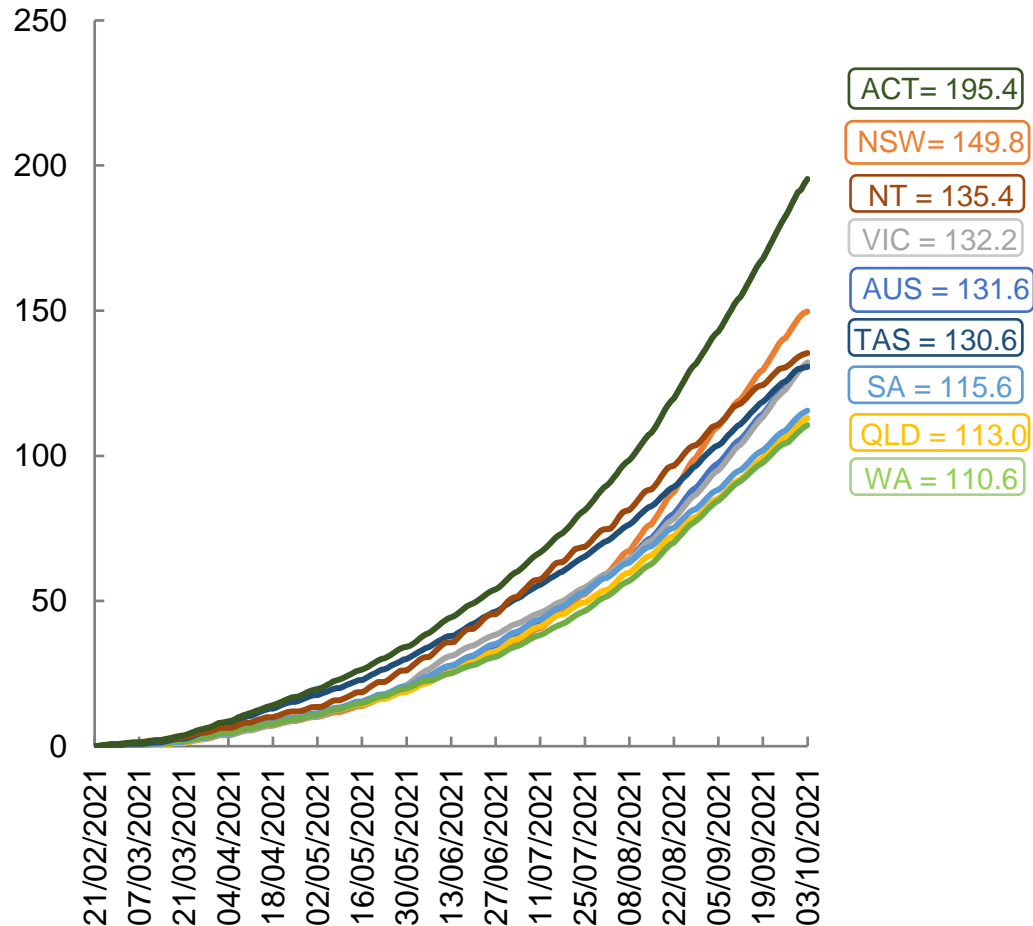


	AUS	ACT	NSW	NT	QLD	SA	TAS	VIC	WA
16 and over - dose 1	16,414,917	321,082	5,808,414	127,264	2,779,489	1,001,099	340,943	4,451,382	1,409,047
16 and over - dose 2	11,729,623	231,641	4,428,775	102,526	2,001,562	741,325	264,524	2,845,438	1,024,710
16 and over - population	20,619,959*	344,037	6,565,651	190,571	4,112,707	1,440,400	440,172	5,407,574	2,114,978
16 and over % with dose 1	79.61%	93.33%	88.47%	66.78%	67.58%	69.50%	77.46%	82.32%	66.62%
16 and over % with dose 2	56.88%	67.33%	67.45%	53.80%	48.67%	51.47%	60.10%	52.62%	48.45%
50 and over - dose 1	7,881,163	129,549	2,657,371	48,299	1,481,378	571,679	194,546	2,008,964	740,675
50 and over - dose 2	6,380,124	113,129	2,211,806	40,458	1,168,436	444,338	163,008	1,624,913	581,270
50 and over - population	8,749,703	127,802	2,807,793	62,280	1,758,855	674,384	220,036	2,211,211	885,370
50 and over % with dose 1	90.07%	>95%	94.64%	77.55%	84.22%	84.77%	88.42%	90.85%	83.66%
50 and over % with dose 2	72.92%	88.52%	78.77%	64.96%	66.43%	65.89%	74.08%	73.49%	65.65%
70 and over - dose 1	2,794,497	42,233	940,196	10,359	531,948	221,593	73,126	699,434	255,786
70 and over - dose 2	2,340,826	37,367	805,820	8,708	441,847	176,467	62,368	586,063	207,165
70 and over - population	2,934,706	39,946	962,606	12,343	577,767	240,514	77,155	743,519	280,281
70 and over % with dose 1	>95%	>95%	>95%	83.93%	92.07%	92.13%	94.78%	94.07%	91.26%
70 and over % with dose 2	79.76%	93.54%	83.71%	70.55%	76.47%	73.37%	80.83%	78.82%	73.91%
12 to 15 - dose 1	528,920	13,792	226,856	4,192	74,885	16,154	4,289	161,667	23,986
12 to 15 - dose 2	37,241	719	20,771	1,771	6,380	636	589	5,164	950
12 to 15 - population	1,243,990	19,693	390,330	13,060	270,146	82,747	26,308	308,611	132,869
12 to 15 % with dose 1	42.52%	70.04%	58.12%	32.10%	27.72%	19.52%	16.30%	52.39%	18.05%
12 to 15 % with dose 2	2.99%	3.65%	5.32%	13.56%	2.36%	0.77%	2.24%	1.67%	0.71%

*National population will not equal sum of listed jurisdictions due to a small number of people counted in national population residing in some 'other' territories. Sum of state doses will not add to national total as some records are unable to be geocoded to a State or Territory.
Doses sourced from Australian Immunisation Register, population from ABS ERP June 2020

Vaccinations by location

Cumulative total doses administered vs state populations*

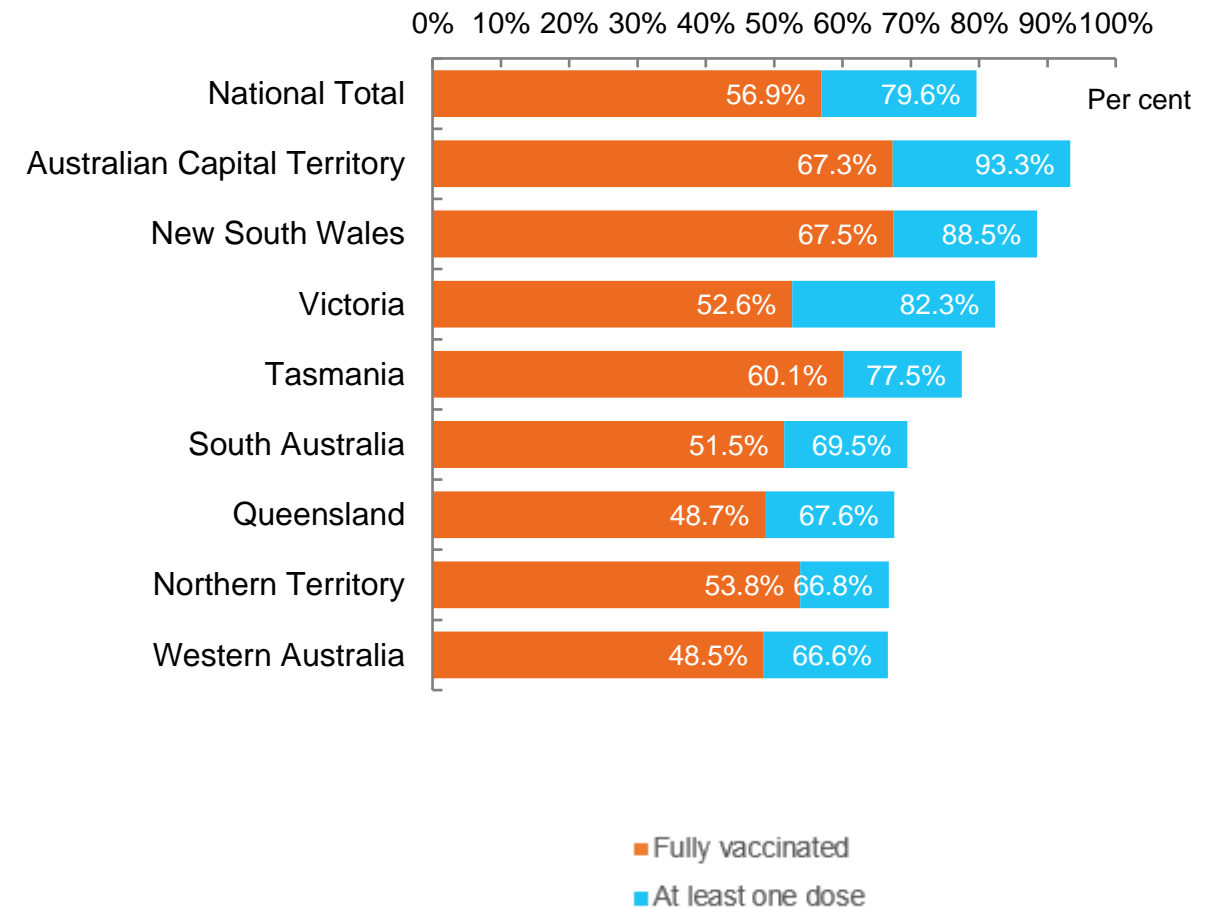


*Not an indication of percentage vaccinated, numbers will exceed 100 due to multiple doses required per person of the population

Data as at:
03 Oct 2021

Australia's COVID-19
Vaccine Roadmap

First and Second Doses by state of residence



Aboriginal and Torres Strait Islander peoples

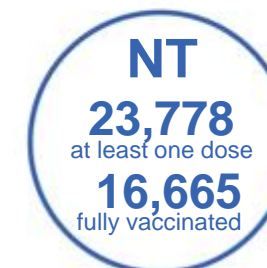
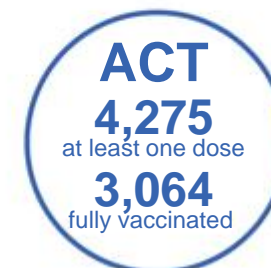
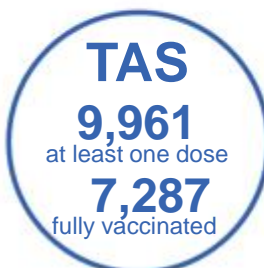
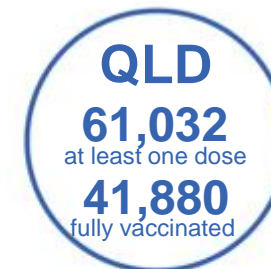
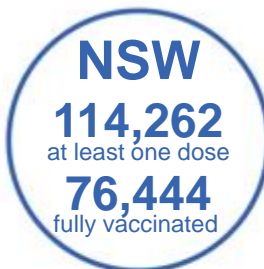
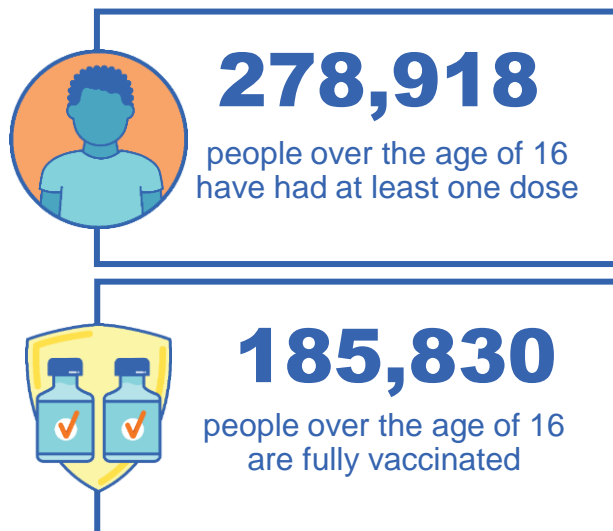
Number of people vaccinated

Data as at:
03 Oct 2021
Updated weekly

Australia's COVID-19
Vaccine Roadmap

167 Aboriginal community controlled health services (ACCHS)

0#	48	26	39	12	3	21	18
ACT	NSW	NT	QLD	SA	TAS	VIC	WA



7,518 people with at least one dose
4,319 people fully vaccinated

residing in other territories or with missing residential information

Source: Australian Immunisation Register

*Identifying as Aboriginal and Torres Strait Islander is optional and the estimated population may be under reported.

**Includes all Aboriginal and Torres Strait Islander peoples who have received a vaccination, not limited to those administered in an ACCHS setting

***Updated weekly.

#ACCHS in the ACT are currently operating as a Commonwealth Vaccine Clinics so not included to avoid double counting

Data as at:
03 Oct 2021

Commonwealth primary care



Primary care vaccine administration sites

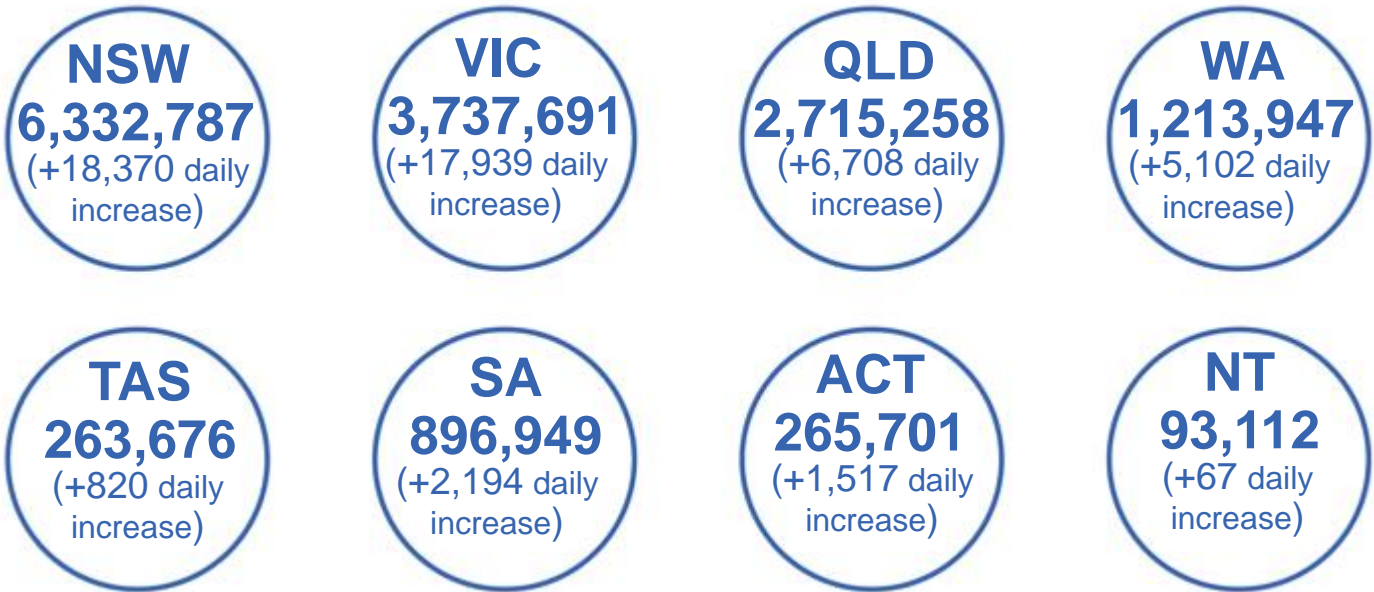
5,529	137	167	3,329
GPs	CVCs	ACCHS	Pharmacies



15,605,119 total vaccine doses administered primary care settings as at 03 October
+ 52,956 recorded in the last 24 hours

Primary care vaccinations by provider type

	Doses administered	Daily increase	7 day increase
General Practice* includes other Commonwealth	14,714,543	46,558	988,852
Pharmacy	890,576	6,398	199,281



85,998 doses administered to persons residing in other territories or with missing residential information

*General practice includes Commonwealth Vaccination Clinics, Aboriginal Community Health Centres, Royal Flying Doctor Service and other Commonwealth vaccination facilities

Source: Australian Immunisation Register

Data as at:
03 Oct 2021

Commonwealth aged care and disability doses administered



1,012,695 (+ 3,892 last 24 hours)

Total vaccine doses administered in aged care and disability facilities as at 03 October

Number of doses administered as part of the Commonwealth aged and disability care rollout

NSW
473,724
(+669 daily increase)

VIC
183,767
(+450 daily increase)

QLD
176,132
(+2,308 daily increase)

WA
63,644
(+177 daily increase)

TAS
16,715
(+2 daily increase)

SA
57,270
(+156 daily increase)

ACT
11,996
(+100 daily increase)

NT
5,684
(+3 daily increase)

*Sourced from the Australian Immunisation Register. Includes all persons vaccinated at participating residential aged care, disability and related industry settings.

**State level breakdown indicates the residential location and may not align to the state in which the vaccination occurred.

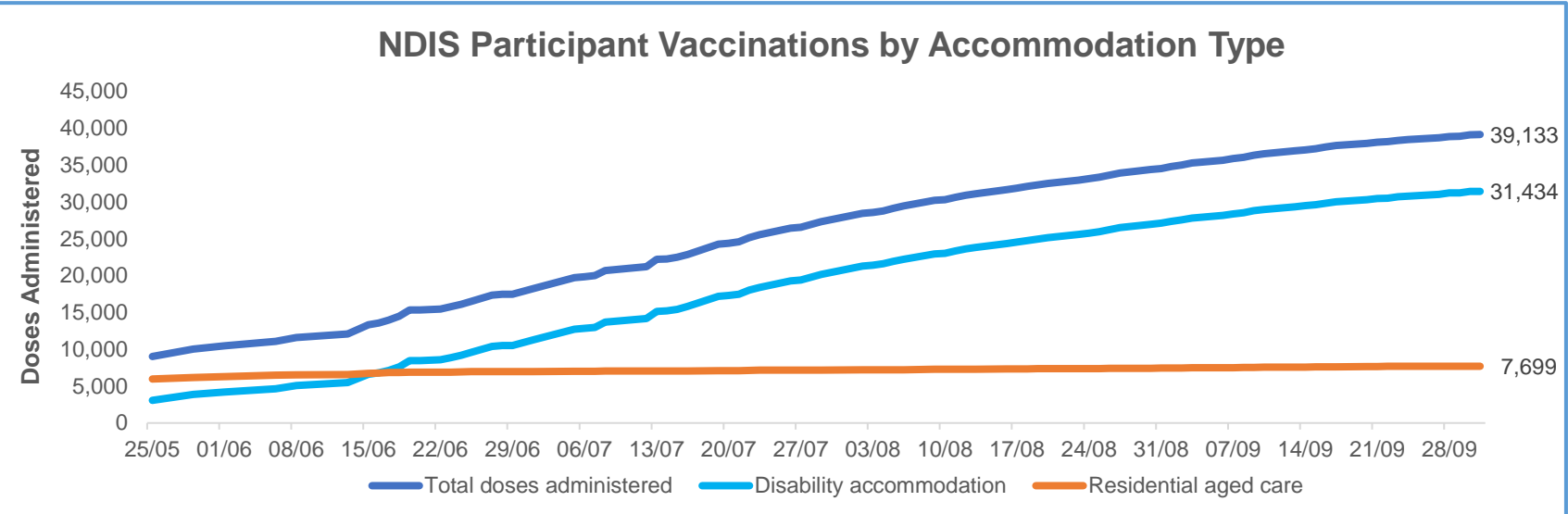
23,763

doses administered to persons residing in other territories or with missing residential information

Data as at:
01 Oct 2021*

Vaccination rate of people with disability and the disability workforce

Phase 1a – People with disability living in shared accommodation



	Total people with at least one dose	People fully vaccinated	Total number of individuals in cohort	Total doses administered	% People with at least one dose	% People fully vaccinated
NDIS participants living in shared accommodation **	20,707	18,426	27,293	39,133	75.9%	67.5%
NDIS screened workers ***	149,908	121,773	200,500	271,681	74.8%	60.7%

* Updates are available Monday to Friday on participants, and bi-weekly for workers, numbers may be up to four days old.

** Shared accommodation means two or more people with disability living in shared residential accommodation and NDIS participants living in Residential Aged Care accommodation as per the eligibility criteria of Phase 1a.

*** Total number of workers within the NDIS Commission Worker Screening database who have ever been successfully screened and linked to an NDIS registered provider or participant.

Source: Linkage between National Disability Insurance Agency data, NDIS Quality and Safeguards Commission data and the Australian Immunisation Register.



Residential aged care vaccination rollout

Residential aged care facilities status

100%
Commonwealth facilities visited (2,573 planned sites)

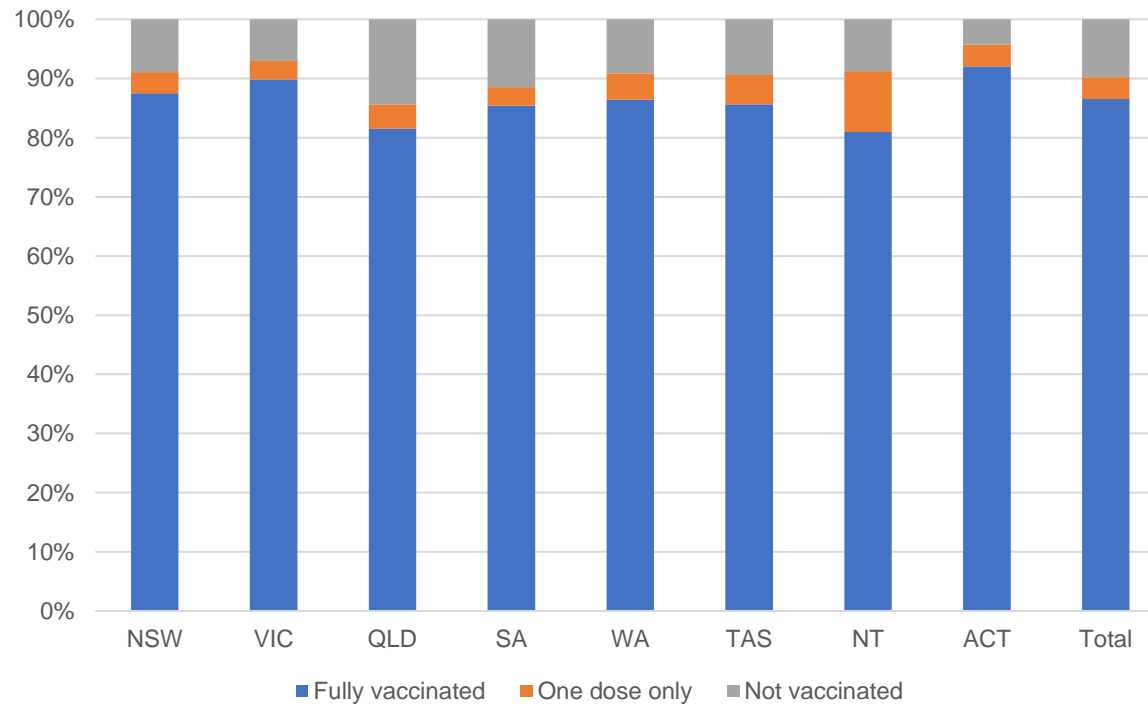
161,284
People fully vaccinated

90.2%
Participation rate

Australia's COVID-19
Vaccine Roadmap

Data as at:
03 Oct 2021

Aged care resident vaccinations



Aged care worker vaccinations

Jurisdictions	Total workers with at least one dose	Workers fully vaccinated	% Workers with at least one dose	% Workers fully vaccinated
NSW	78,563	68,414	99.6%	86.7%
VIC	70,854	60,900	99.0%	85.1%
QLD	47,527	38,331	99.2%	80.0%
SA	26,769	22,942	99.6%	85.4%
WA	23,192	17,769	99.6%	76.3%
TAS	7,483	6,394	99.9%	85.3%
NT	801	769	99.3%	95.3%
ACT	2,929	2,642	100.0%	90.2%
Total	258,118	218,161	99.4%	84.0%

Source: My Aged Care Portal staff vaccination progress

**Resident vaccination information is reported manually by service providers

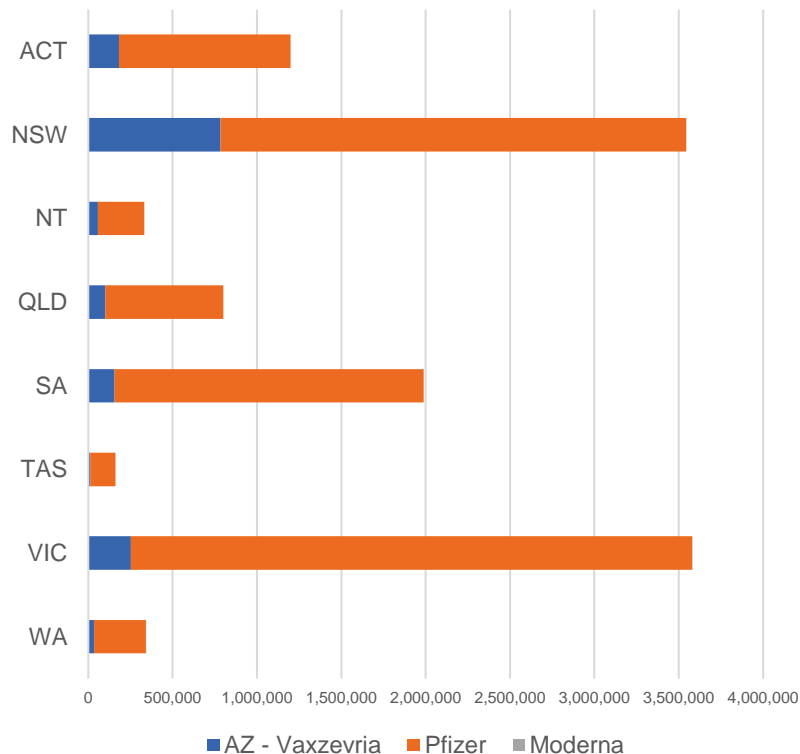
*Status updates are provided by facilities at least once per week. Reporting is updated Monday to Friday to encompass different facility updates being made on different days.

Data is sourced directly from Aged Care Service Providers and is not drawn or closely aligned with data from AIR due to inconsistencies and potential lags in uploading of records.

Data as at:
03 Oct 2021

Jurisdiction administered

Total vaccine doses administered in State and Territory clinics as at 03 October



12,151,459 total vaccine doses administered
in State and Territory clinics as at 03 October
+ 81,689 recorded in the last 24 hours
+ 730,907 recorded in the last 7 days

NSW
3,635,111
(+11,036 daily increase)

VIC
3,621,158
(+31,413 daily increase)

QLD
2,025,966
(+17,978 daily increase)

WA
1,209,723
(+10,060 daily increase)

TAS
334,758
(-2 daily increase*)

SA
810,183
(+6,345 daily increase)

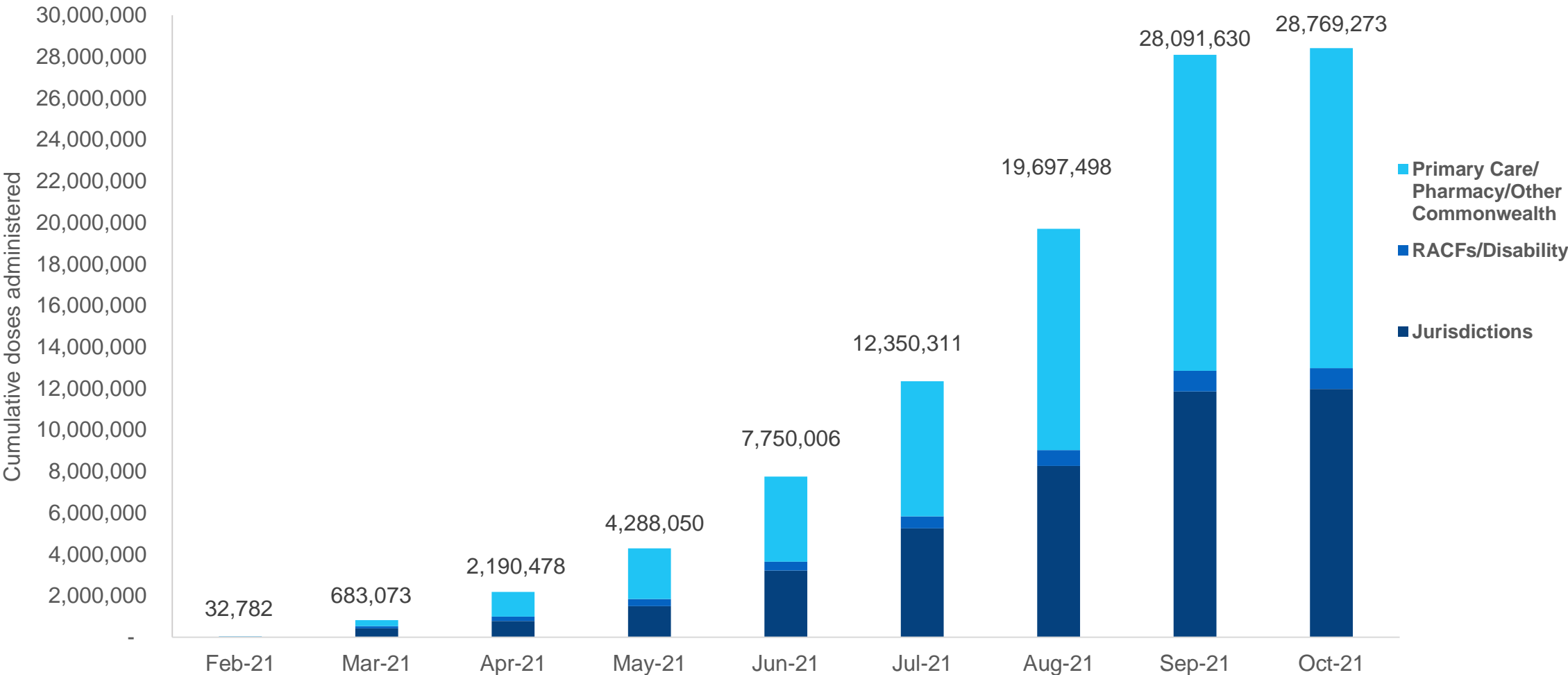
ACT
348,025
(+4,250 daily increase)

NT
166,535
(+609 daily increase)

*Sourced from the Australian Immunisation Register. Numbers are calculated as difference in daily cumulative reported numbers to allow for historical corrections in all data sources. This can occasionally result in negative numbers, such as for Tasmania, where historical details about doses have been updated.

Cumulative doses administered by channel

Data as at:
03 Oct 2021



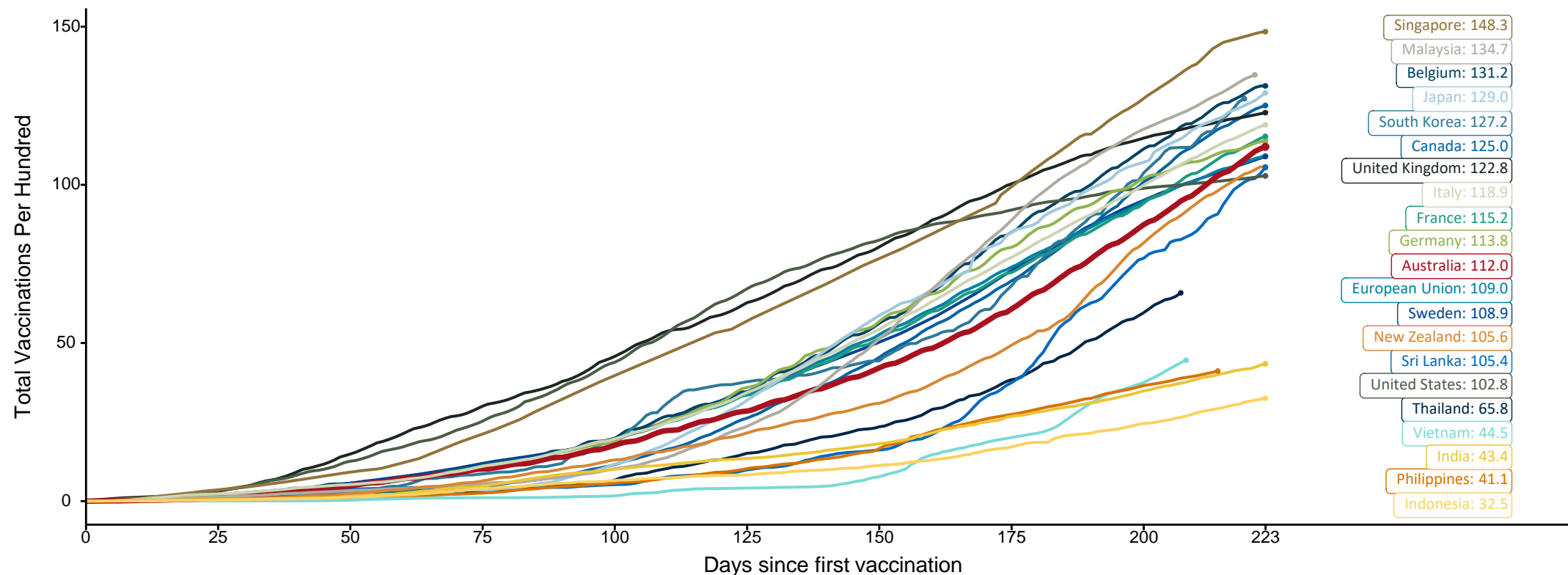
Source: Australian Immunisation Register

Doses at equivalent stages of rollout (Day 223)

Data as at:
03 Oct 2021

The x-axis is truncated at the length of Australia's vaccination program. Countries with intermittent reporting have had their doses per 100 imputed to Australia's current stage of rollout. Israel excluded as it is beyond scale of the graph

Cumulative doses administered (03 Oct): **28,769,273**

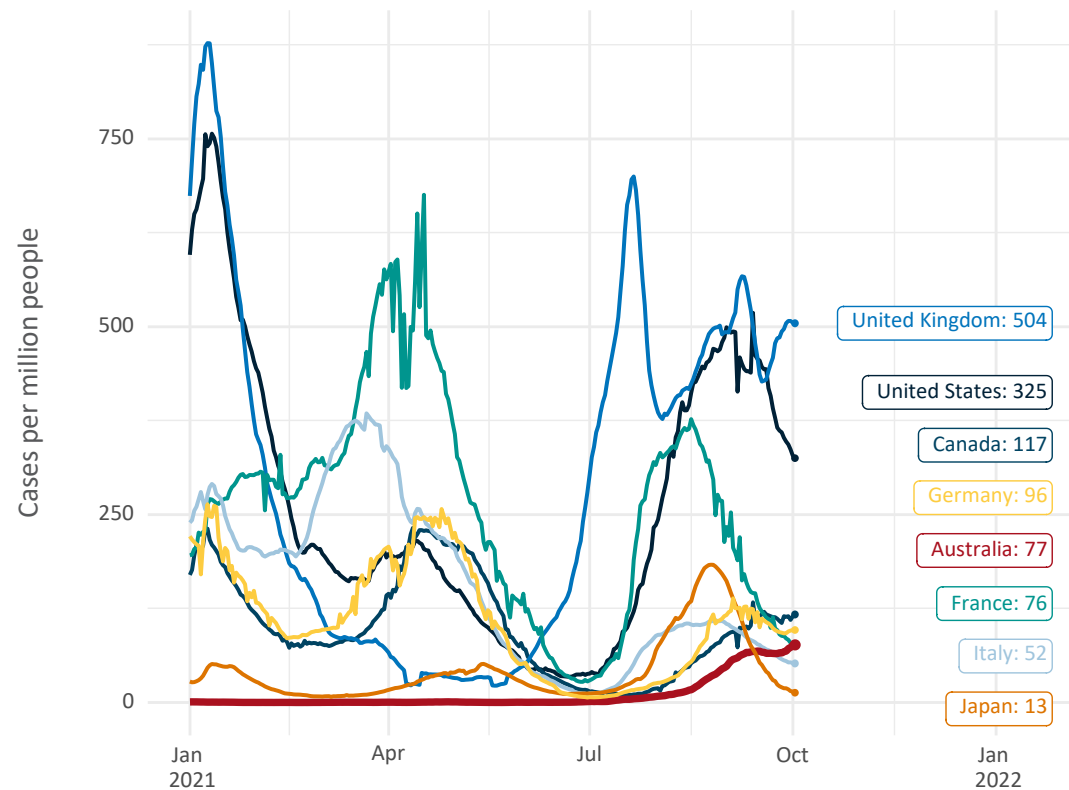


Note: From 15 September 2021, data for Australia includes all doses administered to people 12 and over. Prior to 15 September, data was for 16 and over
Source: Department of Health (Australia), Our World in Data (international)
Latest data: 03 October

International data – COVID-19

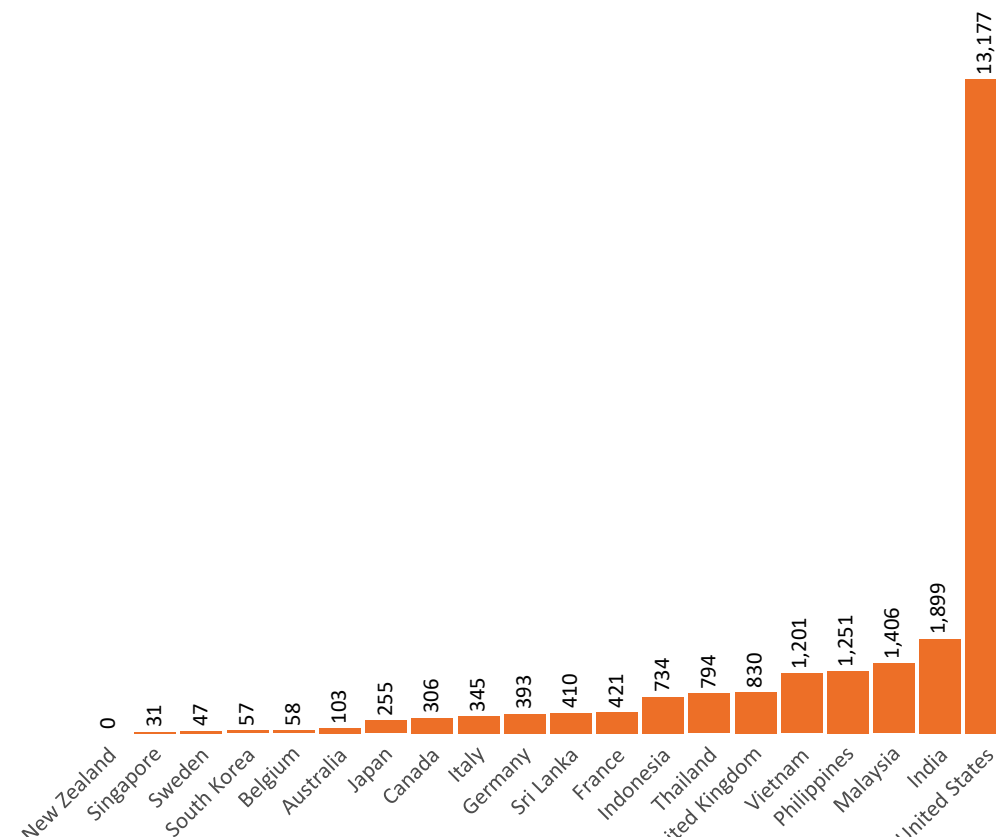
Data as at:
03 Oct 2021

New daily cases per million in 2021, Australia and G7 countries
Smoothed - 7 day average



Source: OWID
Data downloaded: 04 Oct 2021 08:27
Latest data: 02 Oct 2021

COVID-19 deaths in past 7 days - Australia and select countries



Source: OWID
Data downloaded: 04 Oct 2021 08:27
Latest data: 02 Oct 2021

Administration and Utilisation

Doses as at Week 32

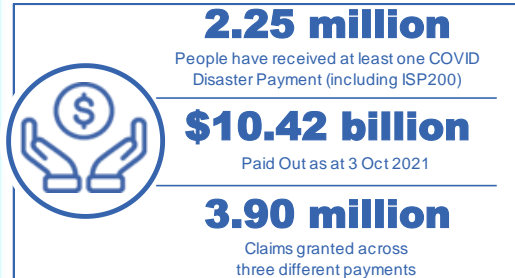
	Ordered	Available	Administered	Available minus Administered	Estimated Dose Utilisation %
	Up to Week 32	Delivered up to Week 31 including redistributions	Up to Week 32		(see note)
NSW	4,254,730	4,035,940	3,635,111	400,829	Fully utilised
VIC	4,071,792	3,811,246	3,621,158	190,088	Fully utilised
QLD	2,560,150	2,357,570	2,025,966	331,604	96%
WA	1,388,698	1,303,948	1,209,723	94,225	Fully utilised
SA	1,079,640	971,830	810,183	161,647	93%
TAS	370,480	358,780	334,758	24,022	Fully utilised
NT	248,624	221,086	166,535	54,551	85%
ACT	370,946	339,098	348,025	-	Fully utilised
Jurisdiction delivered total	14,345,060	13,399,498	12,151,459	1,248,039	Fully utilised
Commonwealth Aged Care & Disability	1,028,238	1,005,220	1,012,695	-	N/A
Commonwealth Primary Care & Other	21,829,460	20,309,438	15,605,119	4,704,319	87%
Total	37,202,758	34,714,156	28,769,273	5,944,883	93%

About this data

- Ordered – Total doses delivered to sites. Based on logistics provider data. This figure includes doses allocated for administration in the coming week.
- Available – total doses that could have been administered to date, less doses re-distributed from States & Territories to Primary Care or Aged Care & Disability (i.e. does not include those deliveries recently received, and intended for use in the coming week).
- Administered – Doses administered as at 3 October 2021.
- The dose utilisation is calculated based on the total doses administered and a small % wastage in line with international standards in relation to total available doses.
- For Aged Care & Disability, the doses available for administration is for the full period (Weeks 1-32).
- Aged Care & Disability utilisation is not provided as the in-reach rollout is demand-based, with vaccines ordered based on resident numbers.

Data as at midnight:
3 Oct 2021

Pandemic Response Payments



COVID Disaster Payment:	3.83 million claims received - 2.08 million individuals paid a total of \$10.12 billion.
\$200 Income Support Payment:	240,000 claims received - 169,000 individuals paid a total of \$196.90 million.
Pandemic Leave Disaster Payment:	79,000 claims received - 68,000 individuals paid a total of \$108.32 million.



COVID Disaster Payment
assisting during a lockdown event in a Commonwealth hotspot.

Income Support Payment \$200
for income support recipients who lost at least 8 hours of work.

Pandemic Leave Disaster Payment
for those who have to self-isolate, quarantine or care.

For more information visit:
servicesaustralia.gov.au

COVID-19 DISASTER PAYMENTS

New South Wales

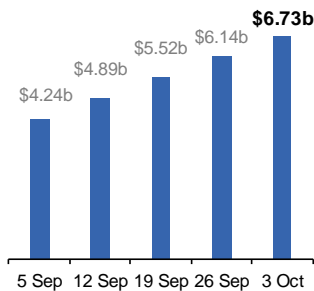
Active lockdown since 24 Jun

1.06m people have received at least one COVID Disaster Payment.

\$6.73b paid out as at 3 Oct 2021.

\$599m paid in initial and reoccurring payments in the week ending 3 Oct 2021.

Cumulative payments made by State since activation on 1 Jul 2021.



Victoria

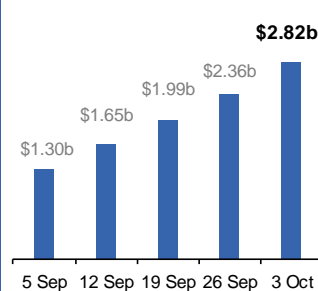
Active lockdown (#6) since 6 Aug

670,000 people have received at least one COVID Disaster Payment.

\$2.82b paid out as at 3 Oct 2021.

\$455m paid in initial and reoccurring payments in the week ending 3 Oct 2021.

Cumulative payments made by State since activation on 8 Jun 2021.



Australian Capital Territory

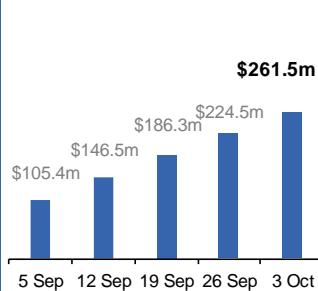
Active lockdown since 12 Aug

64,000 people have received at least one COVID Disaster Payment.

\$261.5m paid out as at 3 Oct 2021.

\$37m paid in initial and reoccurring payments in the week ending 3 Oct 2021.

Cumulative payments made by State since activation on 20 Aug 2021.



Northern Territory

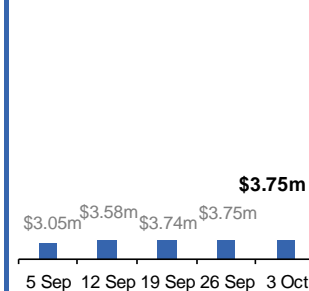
Lockdown from 18 – 20 Jul
Claiming period ended 13 Sep

5,789 people have received at least one COVID Disaster Payment.

\$3.75m paid out as at 3 Oct 2021.

\$5,000 paid in initial payments in the week ending 3 Oct 2021.

Cumulative payments made by State since activation on 25 Aug 2021.



Queensland

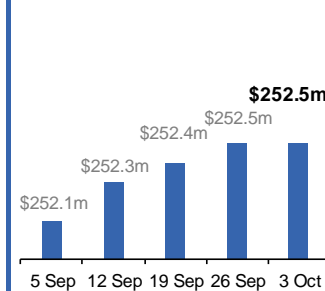
Lockdown from 31 Jul – 11 Aug
Claiming period ended 28 Aug

196,000 people have received at least one COVID Disaster Payment.

\$252.5m paid out as at 3 Oct 2021.

\$24,000 paid in initial and reoccurring payments in the week ending 3 Oct 2021.

Cumulative payments made by State since activation on 7 Aug 2021.



South Australia

Lockdown from 21 – 27 Jul
Claiming period ended 17 Aug

86,000 people have received at least one COVID Disaster Payment.

\$48.2m paid out as at 3 Oct 2021.

\$1,000 paid in initial payments in the week ending 3 Oct 2021.

Cumulative payments made by State since activation on 28 Jul 2021.

