



Australian Government
Operation COVID Shield

COVID-19 Vaccine Roll-out

31 October 2021

Data as at:
30 Oct 2021

Total vaccine doses



35,629,967 total vaccine doses administered nationally as at 30 October
+142,833 recorded in the last 24 hours



18,193,453

people have had at least one dose

88.2%

of people over the age of 16 have had at least one dose



15,921,622

people are fully vaccinated

77.2%

of people over the age of 16 are fully vaccinated

NSW
12,377,745
(+25,507 daily increase)

VIC
9,850,522
(+51,873 daily increase)

QLD
6,144,165
(+28,859 daily increase)

WA
3,118,062
(+18,010 daily increase)

TAS
741,572
(+2,921 daily increase)

SA
2,190,507
(+11,998 daily increase)

ACT
887,878
(+3,026 daily increase)

NT
319,516
(+639 daily increase)

*Administration state breakdown indicates state in which a vaccine was administered
**Overall dose count includes instances of more than two doses per person in a small number of cases.

Data as at:
30 Oct 2021

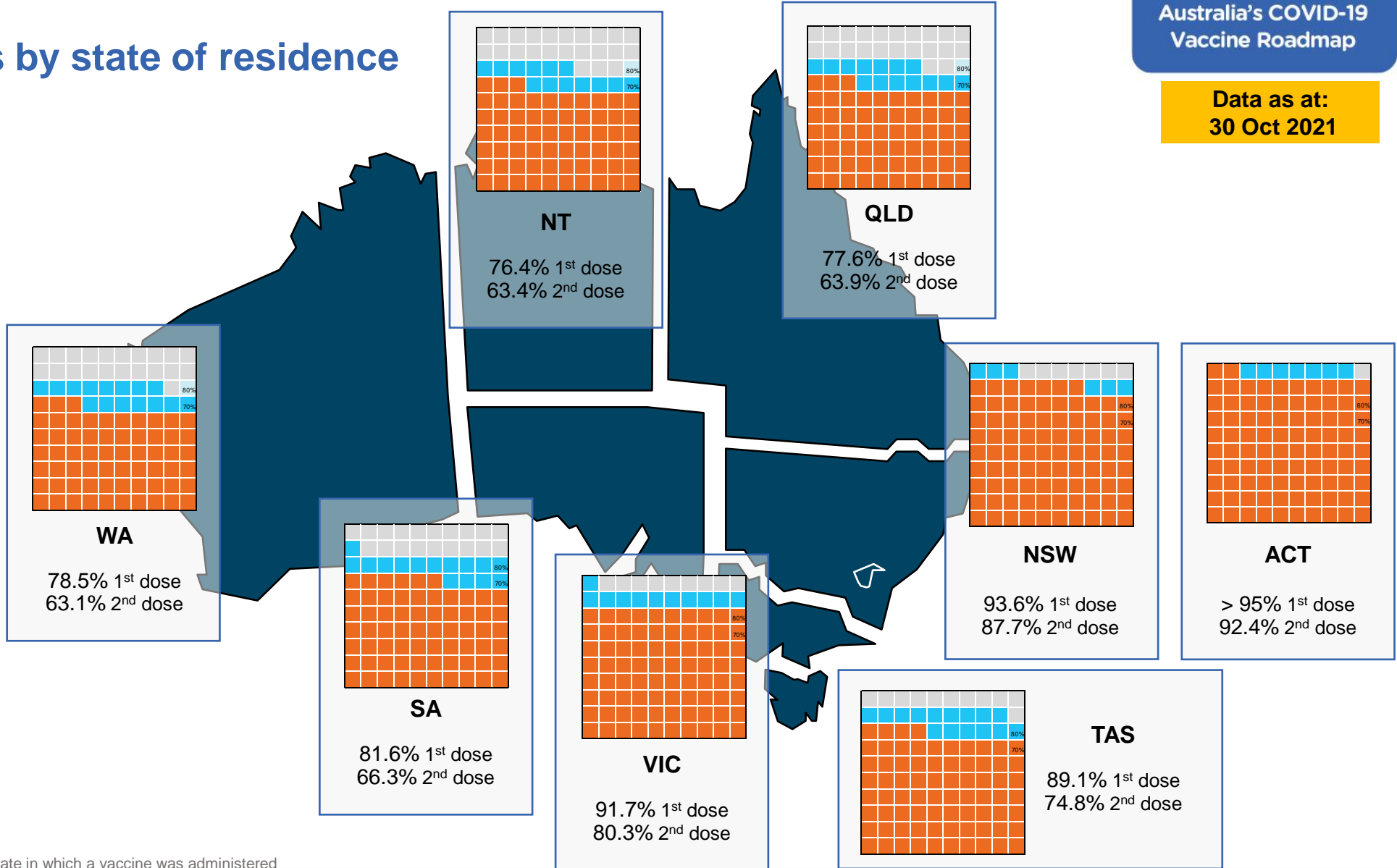
Vaccinations by state of residence

First doses

Age	Today	4 weeks ago	8 weeks ago
16+	88.2%	80.1%	63.9%
50+	>95%	90.6%	82.2%
70+	>95%	>95%	90.5%

Fully vaccinated

Age	Today	4 weeks ago	8 weeks ago
16+	77.2%	57.3%	39.0%
50+	85.9%	73.6%	57.9%
70+	90.3%	80.8%	68.4%



*Residential state may differ from the state in which a vaccine was administered

Commonwealth and Jurisdiction vaccine doses administered

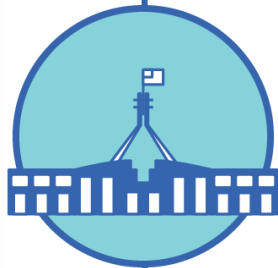
Data as at:
30 Oct 2021



35,629,967 total vaccine doses administered nationally as at 30 October
+ **142,833** recorded in the last 24 hours



14,696,291 doses administered by state and territory facilities
+ **59,586** recorded in the last 24 hours



20,933,676 doses administered by commonwealth facilities
+ **83,247** recorded in the last 24 hours

19,880,443 total vaccine doses administered in primary care settings
1,053,233 total vaccine doses administered in aged care and disability settings

NSW	Jurisdictions	Commonwealth
Cumulative	4,099,328	8,278,417
Daily increase	5,786	19,721

VIC	Jurisdictions	Commonwealth
Cumulative	4,514,160	5,336,362
Daily increase	21,940	29,933

QLD	Jurisdictions	Commonwealth
Cumulative	2,524,717	3,619,448
Daily increase	13,888	14,971

WA	Jurisdictions	Commonwealth
Cumulative	1,485,606	1,632,456
Daily increase	7,828	10,182

TAS	Jurisdictions	Commonwealth
Cumulative	409,039	332,533
Daily increase	1,648	1,273

SA	Jurisdictions	Commonwealth
Cumulative	1,028,837	1,161,670
Daily increase	6,701	5,297

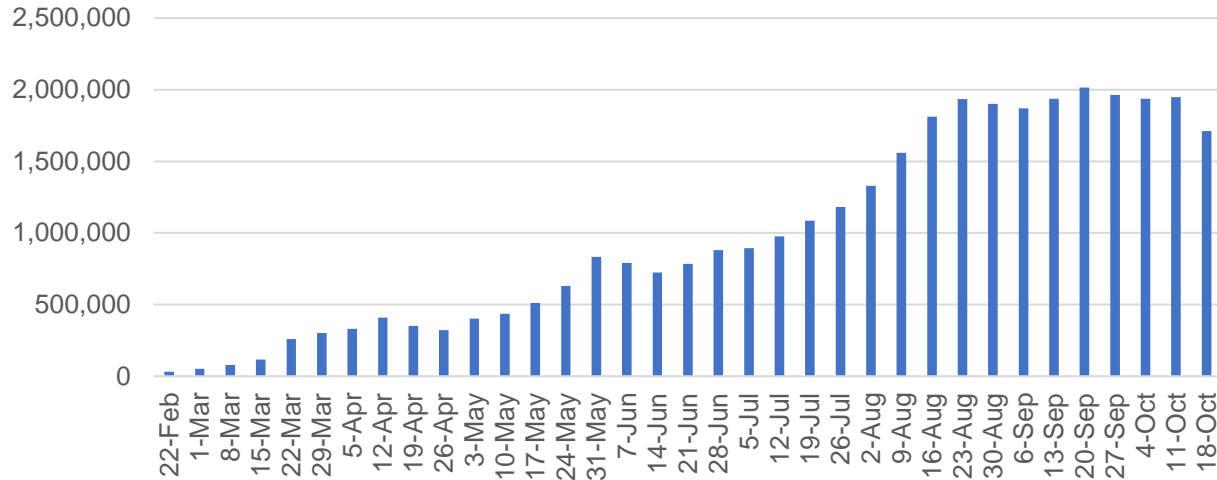
ACT	Jurisdictions	Commonwealth
Cumulative	442,844	445,034
Daily increase	1,281	1,745

NT	Jurisdictions	Commonwealth
Cumulative	191,760	127,756
Daily increase	514	125

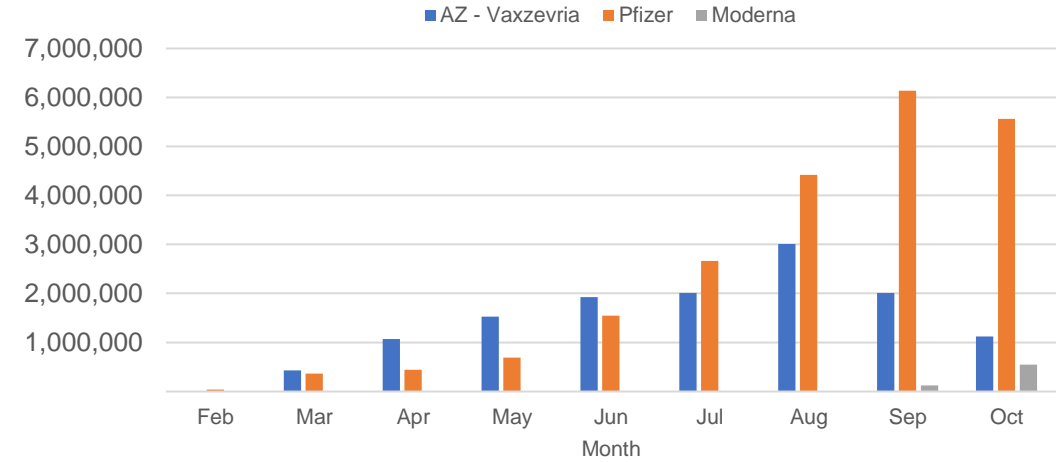
Vaccine milestone charts

Data as at: 30 Oct 2021

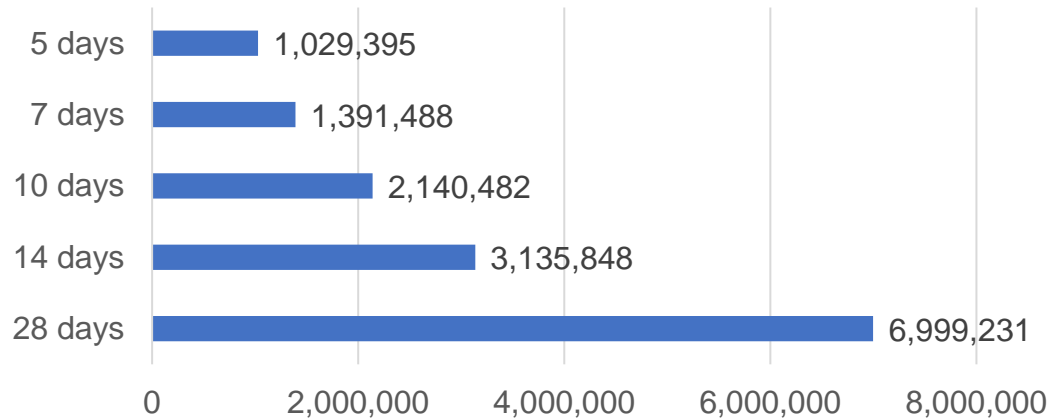
Jabs in arms by week



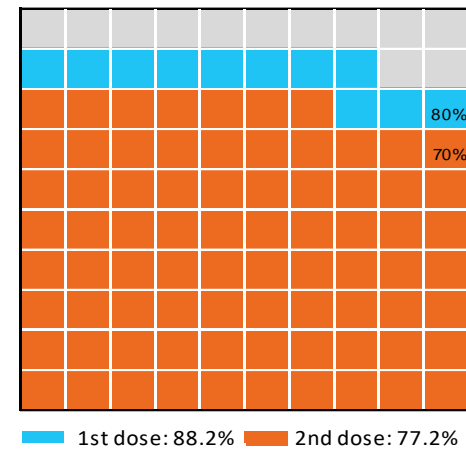
Doses by administration month and vaccine type



Doses Reported



Eligible population percentage coverage



*Each square represents 1% of the national population. Squares are filled as milestones are achieved.

*Sourced from the Australian Immunisation Register.

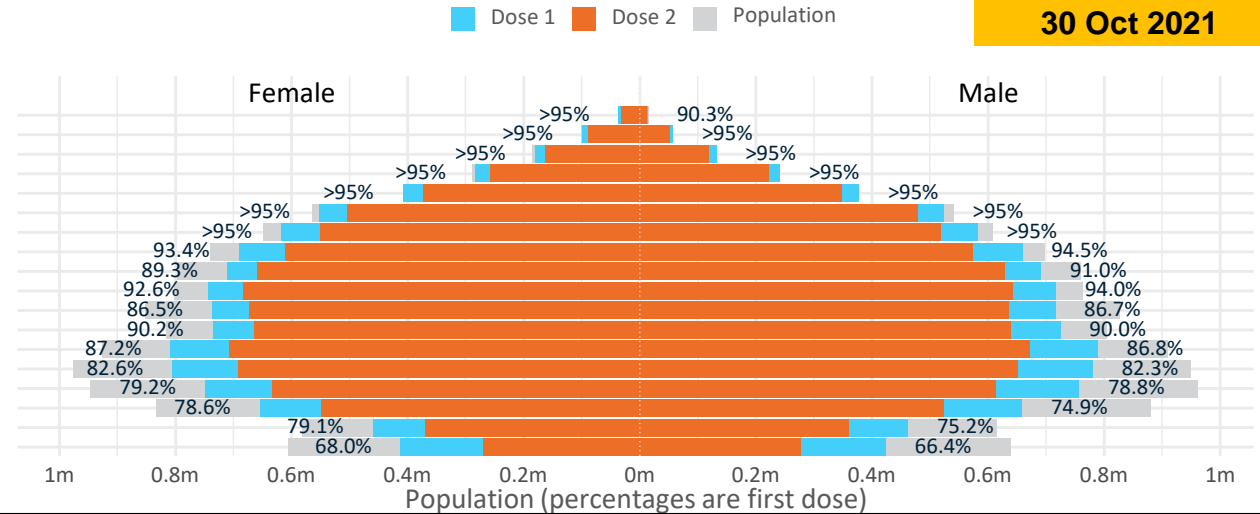
Doses by age and sex

First and second doses by age and sex

	16+	50+	70+	12-15
Dose 1	88.23% (18,193,453 doses / 20,619,959 people)	>95% (8,324,871 doses / 8,749,703 people)	>95% (2,908,356 doses / 2,934,706 people)	67.19% (835,859 doses / 1,243,990 people)
Dose 2	77.21% (15,921,622 doses / 20,619,959 people)	85.94% (7,519,325 doses / 8,749,703 people)	90.31% (2,650,350 doses / 2,934,706 people)	44.03% (547,733 doses / 1,243,990 people)

**Data as at:
30 Oct 2021**

Age	Dose 1	Dose 2
95+	50,255 (95.0%)	43,956 (83.1%)
90-94	156,901 (>95%)	140,161 (88.5%)
85-89	312,979 (>95%)	282,024 (89.2%)
80-84	525,394 (>95%)	479,674 (90.8%)
75-79	785,872 (>95%)	721,872 (93.3%)
70-74	1,076,955 (>95%)	982,663 (88.9%)
65-69	1,201,008 (>95%)	1,070,185 (85.1%)
60-64	1,351,215 (94.1%)	1,184,651 (82.5%)
55-59	1,403,586 (90.2%)	1,287,669 (82.8%)
50-54	1,460,706 (93.4%)	1,326,470 (84.8%)
45-49	1,453,529 (86.7%)	1,308,401 (78.0%)
40-44	1,462,733 (90.3%)	1,305,132 (80.6%)
35-39	1,601,524 (87.3%)	1,382,339 (75.3%)
30-34	1,593,331 (82.8%)	1,348,910 (70.1%)
25-29	1,515,706 (79.5%)	1,252,050 (65.7%)
20-24	1,319,116 (77.0%)	1,076,448 (62.9%)
16-19	922,643 (77.2%)	729,017 (61.0%)
12-15	835,859 (67.2%)	547,733 (44.0%)



	AUS	ACT	NSW	NT	QLD	SA	TAS	VIC	WA
16 and over - dose 1	18,193,453	341,816	6,143,109	145,542	3,191,576	1,175,352	392,190	4,959,778	1,661,010
16 and over - dose 2	15,921,622	317,988	5,758,556	120,907	2,626,965	954,916	329,050	4,344,551	1,333,972
16 and over - population	20,619,959*	344,037	6,565,651	190,571	4,112,707	1,440,400	440,172	5,407,574	2,114,978
16 and over % with dose 1	88.23%	>95%	93.56%	76.37%	77.60%	81.60%	89.10%	91.72%	78.54%
16 and over % with dose 2	77.21%	92.43%	87.71%	63.44%	63.87%	66.30%	74.75%	80.34%	63.07%
50 and over - dose 1	8,324,871	132,664	2,745,998	52,063	1,583,566	615,086	206,741	2,139,324	799,382
50 and over - dose 2	7,519,325	125,644	2,601,346	45,765	1,380,113	526,147	182,270	1,936,939	682,283
50 and over - population	8,749,703	127,802	2,807,793	62,280	1,758,855	674,384	220,036	2,211,211	885,370
50 and over % with dose 1	>95%	>95%	>95%	83.60%	90.03%	91.21%	93.96%	>95%	90.29%
50 and over % with dose 2	85.94%	>95%	92.65%	73.48%	78.47%	78.02%	82.84%	87.60%	77.06%
70 and over - dose 1	2,908,356	43,103	967,352	10,879	554,513	232,765	76,194	734,540	268,871
70 and over - dose 2	2,650,350	40,751	915,262	9,685	496,280	202,011	67,661	668,390	233,780
70 and over - population	2,934,706	39,946	962,606	12,343	577,767	240,514	77,155	743,519	280,281
70 and over % with dose 1	>95%	>95%	>95%	88.14%	>95%	>95%	>95%	>95%	>95%
70 and over % with dose 2	90.31%	>95%	>95%	78.47%	85.90%	83.99%	87.69%	89.90%	83.41%
12 to 15 - dose 1	835,859	19,372	309,516	7,001	134,459	39,588	15,361	249,915	55,446
12 to 15 - dose 2	547,733	15,842	241,370	3,925	73,723	17,421	5,583	162,140	25,099
12 to 15 - population	1,243,990	19,693	390,330	13,060	270,146	82,747	26,308	308,611	132,869
12 to 15 % with dose 1	67.19%	>95%	79.30%	53.61%	49.77%	47.84%	58.39%	80.98%	41.73%
12 to 15 % with dose 2	44.03%	80.44%	61.84%	30.05%	27.29%	21.05%	21.22%	52.54%	18.89%

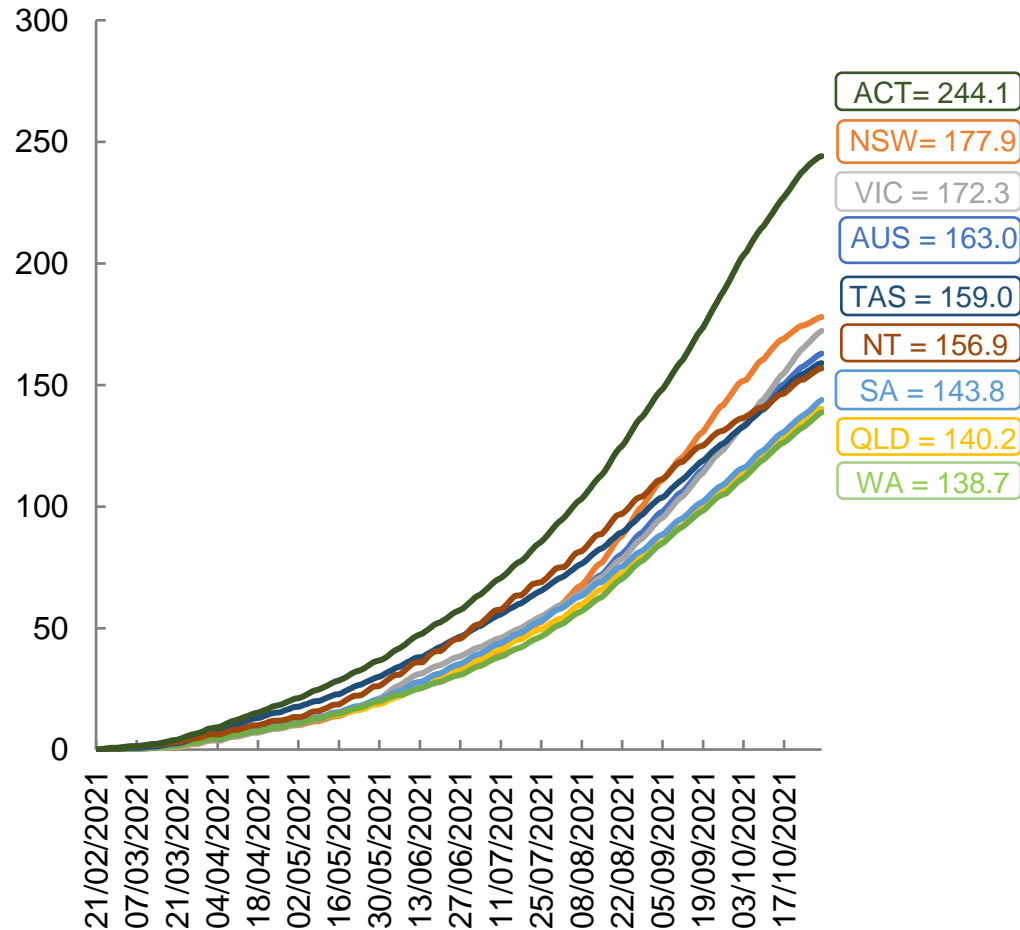
*National population will not equal sum of listed jurisdictions due to a small number of people counted in national population residing in some 'other' territories. Sum of state doses will not add to national total as some records are unable to be geocoded to a State or Territory. Doses sourced from Australian Immunisation Register, population from ABS ERP June 2020

Vaccinations by location

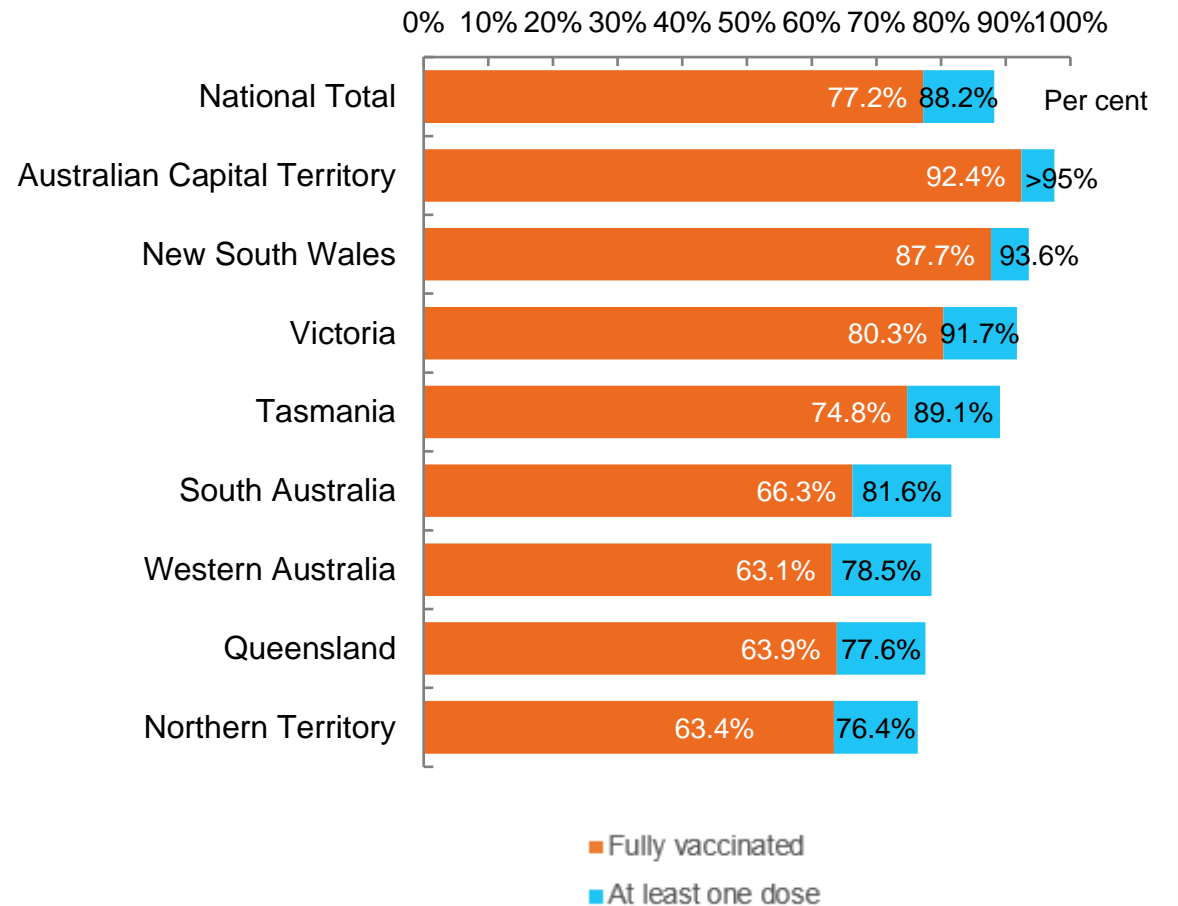
Data as at:
30 Oct 2021

Australia's COVID-19
Vaccine Roadmap

Cumulative total doses administered vs eligible state populations*



First and Second Doses by state of residence



*Not an indication of percentage vaccinated, numbers will exceed 100 due to multiple doses required per person of the population. All doses are included, including those for the 12-15 cohort, and are based on vaccination provider location.

Aboriginal and Torres Strait Islander peoples

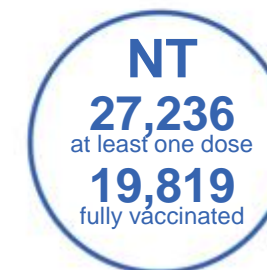
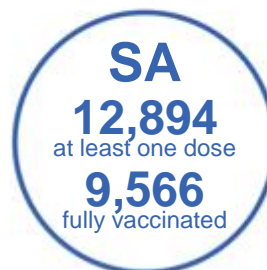
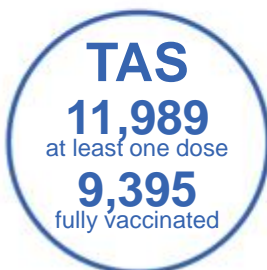
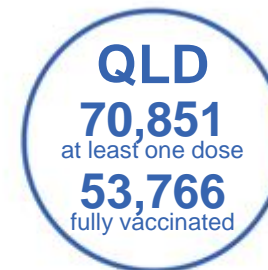
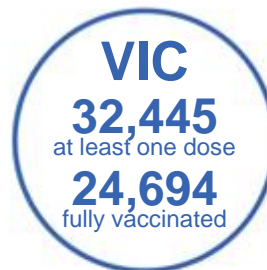
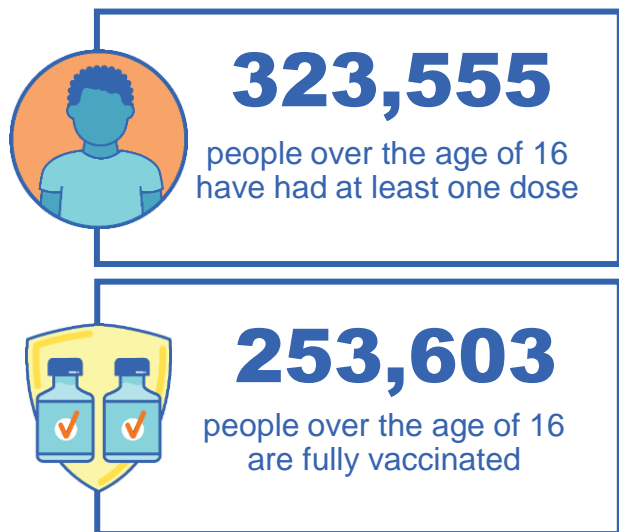
Number of people vaccinated

Data as at:
24 Oct 2021
Updated weekly

Australia's COVID-19
Vaccine Roadmap

169 Aboriginal community controlled health services (ACCHS)

0#	50	26	39	12	3	21	18
ACT	NSW	NT	QLD	SA	TAS	VIC	WA



8,623 people with at least one dose
5,626 people fully vaccinated

residing in other territories or with missing residential information

Source: Australian Immunisation Register

*Identifying as Aboriginal and Torres Strait Islander is optional and the estimated population may be under reported.

**Includes all Aboriginal and Torres Strait Islander peoples who have received a vaccination, not limited to those administered in an ACCHS setting

***Updated weekly.

#ACCHS in the ACT are currently operating as a Commonwealth Vaccine Clinics so not included to avoid double counting

Data as at:
30 Oct 2021

Commonwealth primary care



Primary care vaccine administration sites

5,592	137	169	3,408
GPs	CVCs	ACCHS	Pharmacies



19,880,443 total vaccine doses administered primary care settings as at 30 October
+ **81,420** recorded in the last 24 hours

Primary care vaccinations by provider type

	Doses administered	Daily increase	7 day increase
General Practice* includes other Commonwealth	18,214,075	61,873	685,848
Pharmacy	1,666,368	19,547	216,920



114,468 doses administered to persons residing in other territories or with missing residential information

*General practice includes Commonwealth Vaccination Clinics, Aboriginal Community Health Centres, Royal Flying Doctor Service and other Commonwealth vaccination facilities

Source: Australian Immunisation Register

Data as at:
30 Oct 2021

Commonwealth aged care and disability doses administered



1,053,233 (+ 1,827 last 24 hours)

Total vaccine doses administered in aged care and disability facilities as at 30 October

Number of doses administered as part of the Commonwealth aged and disability care rollout

NSW
510,303
(+285 daily increase)

VIC
196,886
(+308 daily increase)

QLD
154,543
(+436 daily increase)

WA
70,586
(+360 daily increase)

TAS
16,868
(+2 daily increase)

SA
61,038
(+366 daily increase)

ACT
13,044
(+34 daily increase)

NT
5,780
(+3 daily increase)

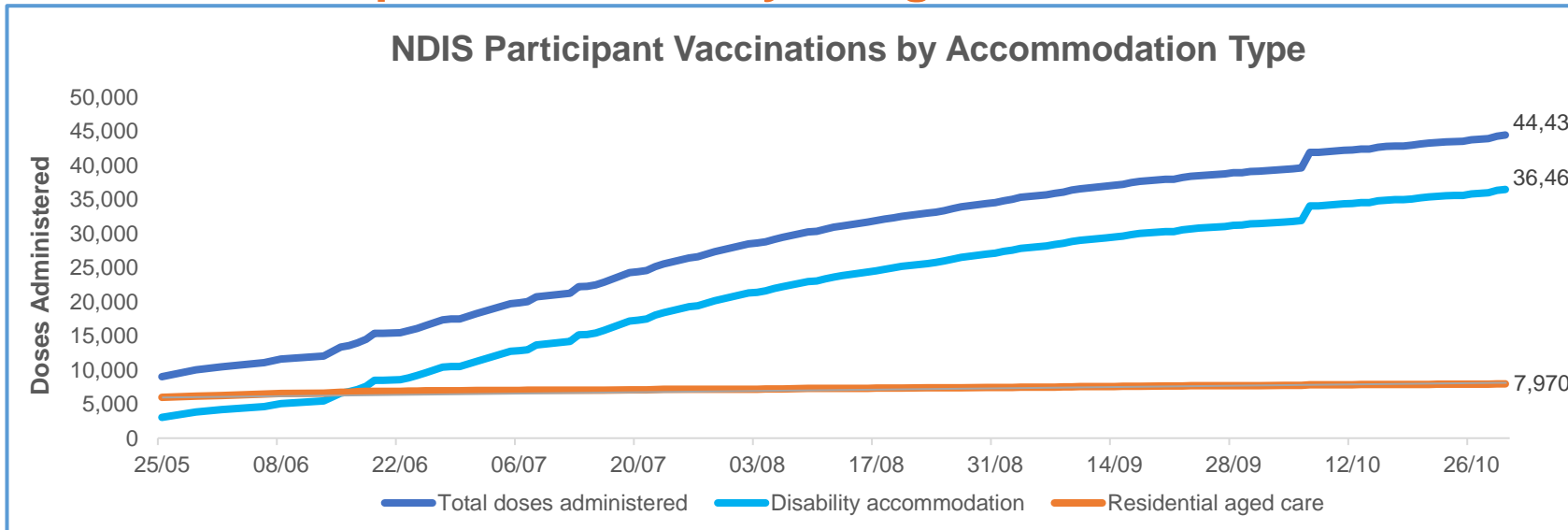
*Sourced from the Australian Immunisation Register. Includes all persons vaccinated at participating residential aged care, disability and related industry settings.
**State level breakdown indicates the residential location and may not align to the state in which the vaccination occurred.

24,185 doses administered to persons residing in other territories or with missing residential information

Data as at:
30 Oct 2021*

Vaccination rate of people with disability and the disability workforce

Phase 1a – People with disability living in shared accommodation



	Total people with at least one dose	People fully vaccinated	Total number of individuals in cohort	Total doses administered	% People with at least one dose	% People fully vaccinated
NDIS participants living in shared accommodation **	22,988	21,450	27,603	44,438	83.3%	77.7%
NDIS screened workers ***	184,994	167,792	223,262	352,786	82.9%	75.2%



* Updates are available Monday to Friday on participants, and bi-weekly for workers, numbers may be up to four days old.

** Shared accommodation means two or more people with disability living in shared residential accommodation and NDIS participants living in Residential Aged Care accommodation as per the eligibility criteria of Phase 1a.

*** Total number of workers within the NDIS Commission Worker Screening database who have ever been successfully screened and linked to an NDIS registered provider or participant.

Source: Linkage between National Disability Insurance Agency data, NDIS Quality and Safeguards Commission data and the Australian Immunisation Register.

Residential aged care vaccination rollout

Residential aged care facilities status

100%

Commonwealth facilities visited (2,573 planned sites)

161,970

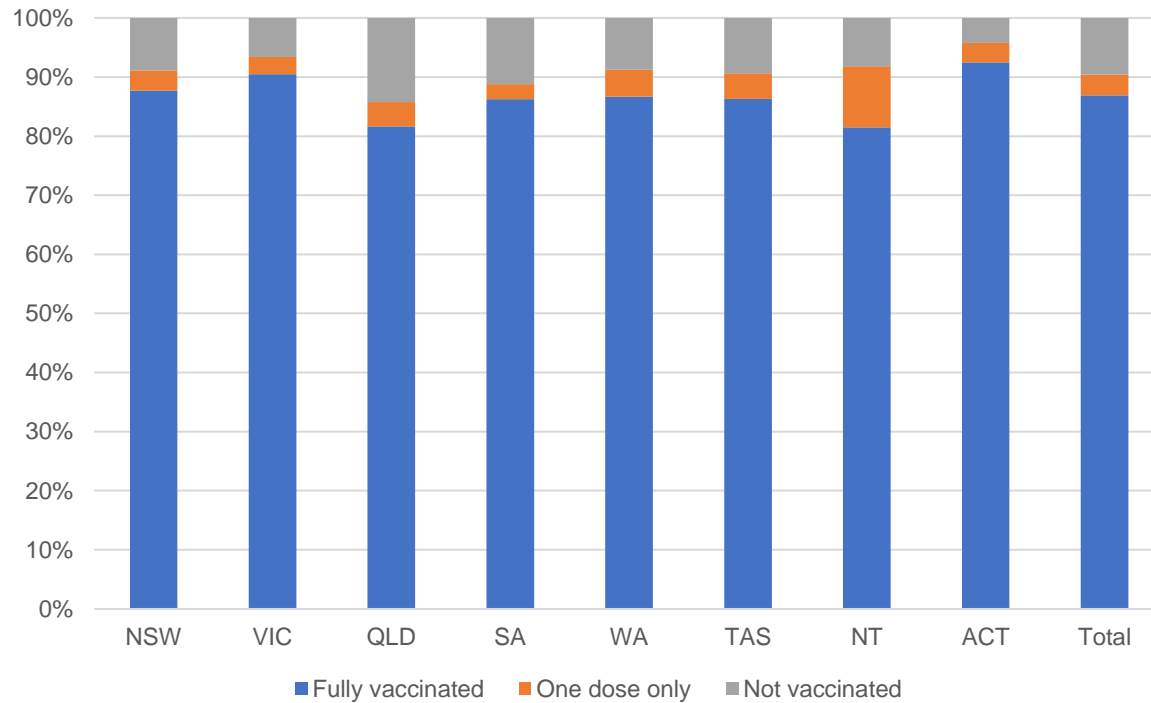
People fully vaccinated

168,511

People with at least one dose

Data as at: 28 Oct 2021

Aged care resident vaccinations



Aged care worker vaccinations

Jurisdictions	Total workers with at least one dose	Workers fully vaccinated	% Workers with at least one dose	% Workers fully vaccinated
NSW	78,519	76,829	99.9%	97.7%
VIC	71,433	67,053	99.8%	93.7%
QLD	48,587	45,048	99.9%	92.6%
SA	27,302	25,547	100.0%	93.6%
WA	23,584	20,779	99.9%	88.0%
TAS	7,670	6,943	99.9%	90.4%
NT	830	807	99.5%	96.8%
ACT	2,969	2,874	99.9%	96.7%
Total	260,894	245,880	99.9%	94.1%

Source: My Aged Care Portal staff vaccination progress

**Resident vaccination information is reported manually by service providers

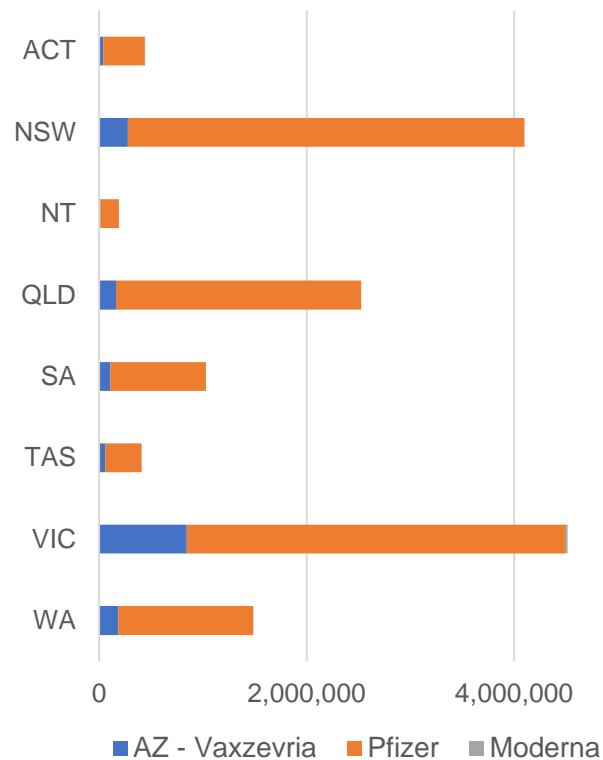
*Status updates are provided by facilities at least once per week. Reporting is updated Monday to Friday to encompass different facility updates being made on different days.

Data is sourced directly from Aged Care Service Providers and is not drawn or closely aligned with data from AIR due to inconsistencies and potential lags in uploading of records.

Data as at:
30 Oct 2021

Jurisdiction administered

Total vaccine doses administered in State and Territory clinics as at 30 October



14,696,291 total vaccine doses administered in State and Territory clinics as at 30 October
 + **59,586** recorded in the last 24 hours
 + **474,228** recorded in the last 7 days

NSW
4,099,328
 (+5,786 daily increase)

VIC
4,514,160
 (+21,940 daily increase)

QLD
2,524,717
 (+13,888 daily increase)

WA
1,485,606
 (+7,828 daily increase)

TAS
409,039
 (+1,648 daily increase)

SA
1,028,837
 (+6,701 daily increase)

ACT
442,844
 (+1,281 daily increase)

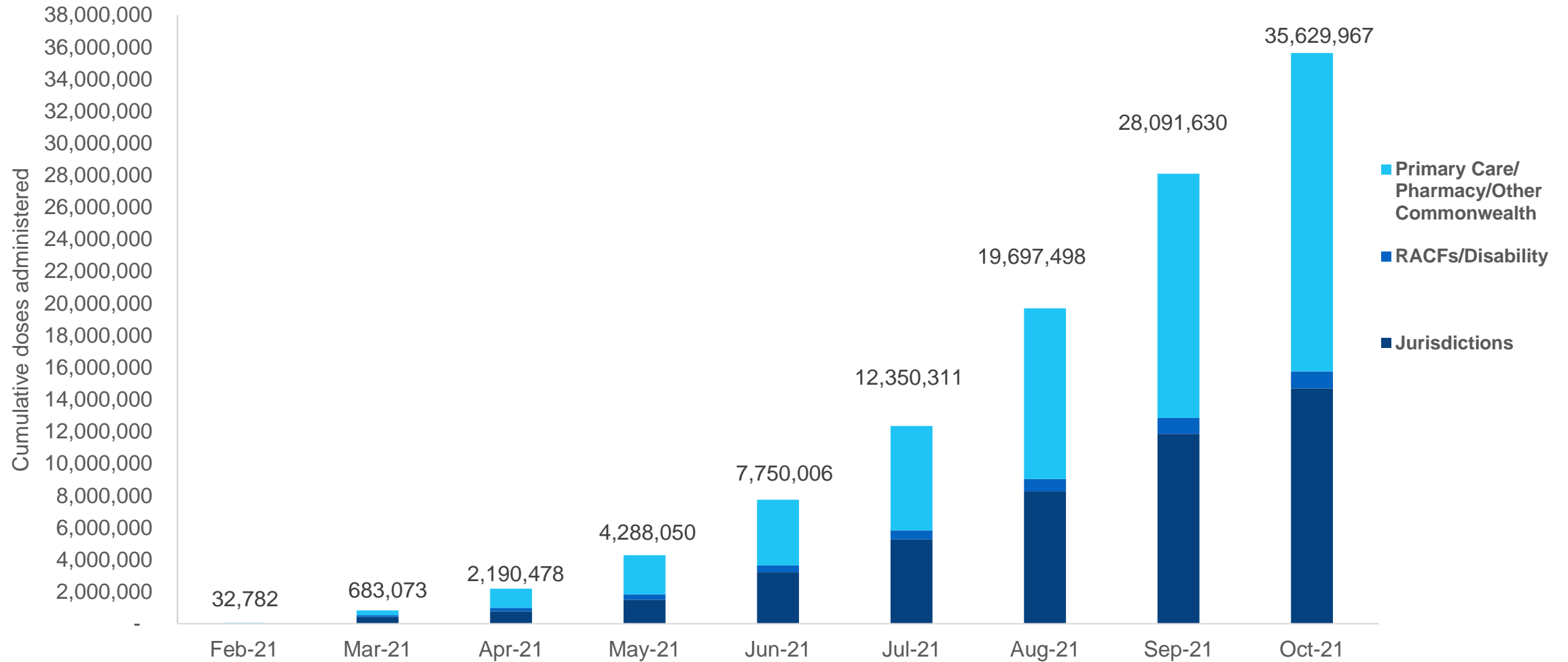
NT
191,760
 (+514 daily increase)

*Sourced from the Australian Immunisation Register and self-reported data. Numbers are calculated as difference in daily cumulative reported numbers to allow for historical corrections in all self-reported data sources.

Source: Australian Immunisation Register

Cumulative doses administered by channel

Data as at:
30 Oct 2021



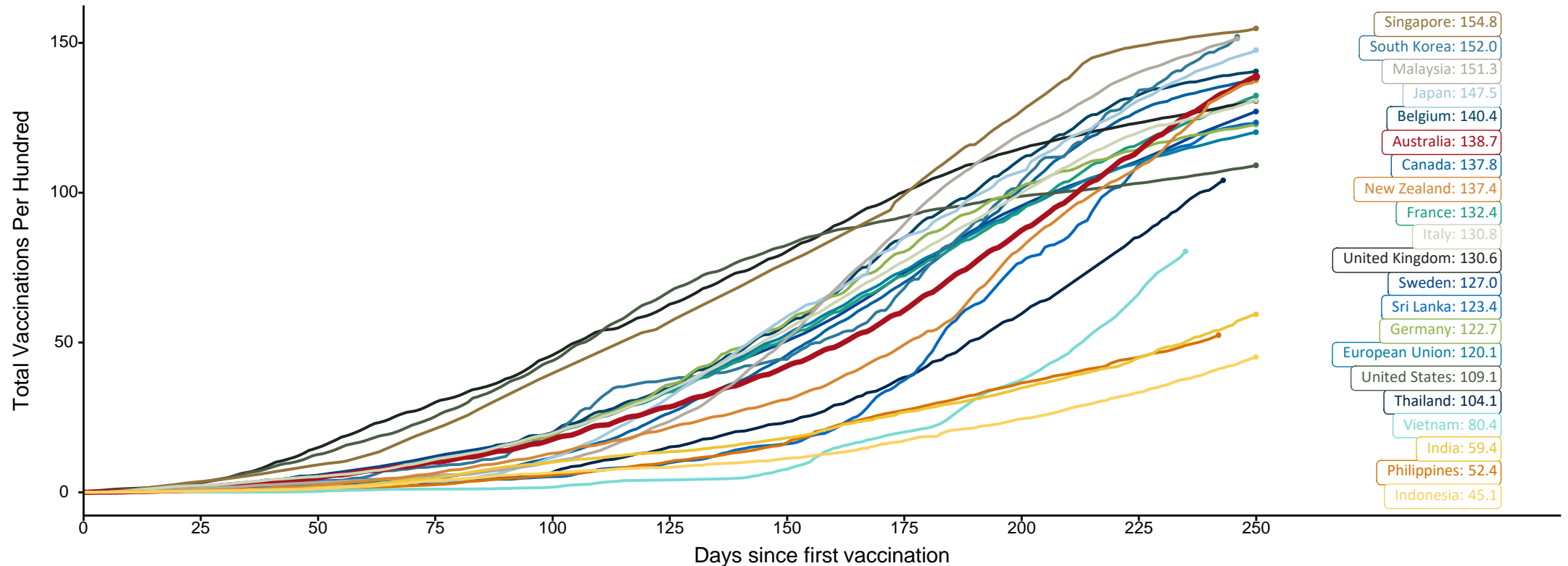
Source: Australian Immunisation Register

Doses at equivalent stages of rollout (Day 250)

Data as at:
30 Oct 2021

The x-axis is truncated at the length of Australia's vaccination program. Countries with intermittent reporting have had their doses per 100 imputed to Australia's current stage of rollout. Israel excluded as it is beyond scale of the graph

Cumulative doses administered (30 Oct): **35,629,967**

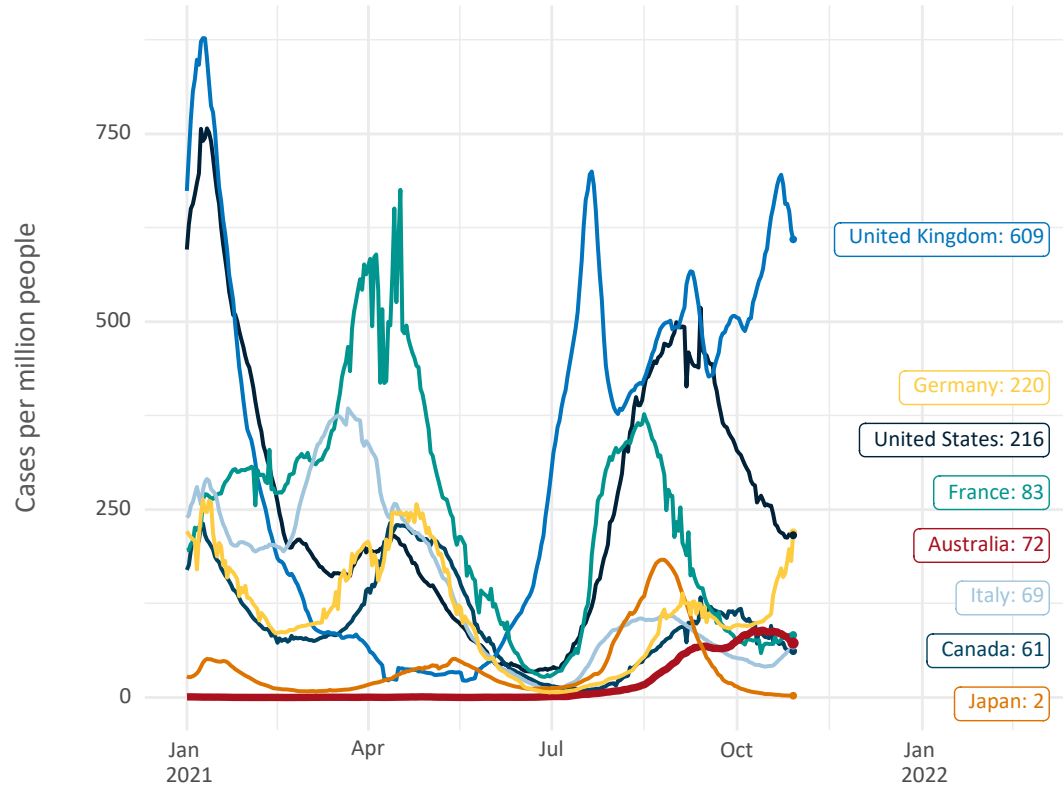


Note: From 15 September 2021, data for Australia includes all doses administered to people 12 and over. Prior to 15 September, data was for 16 and over
 Source: Department of Health (Australia), Our World in Data (international)
 Latest data: 30 October

Data as at:
30 Oct 2021

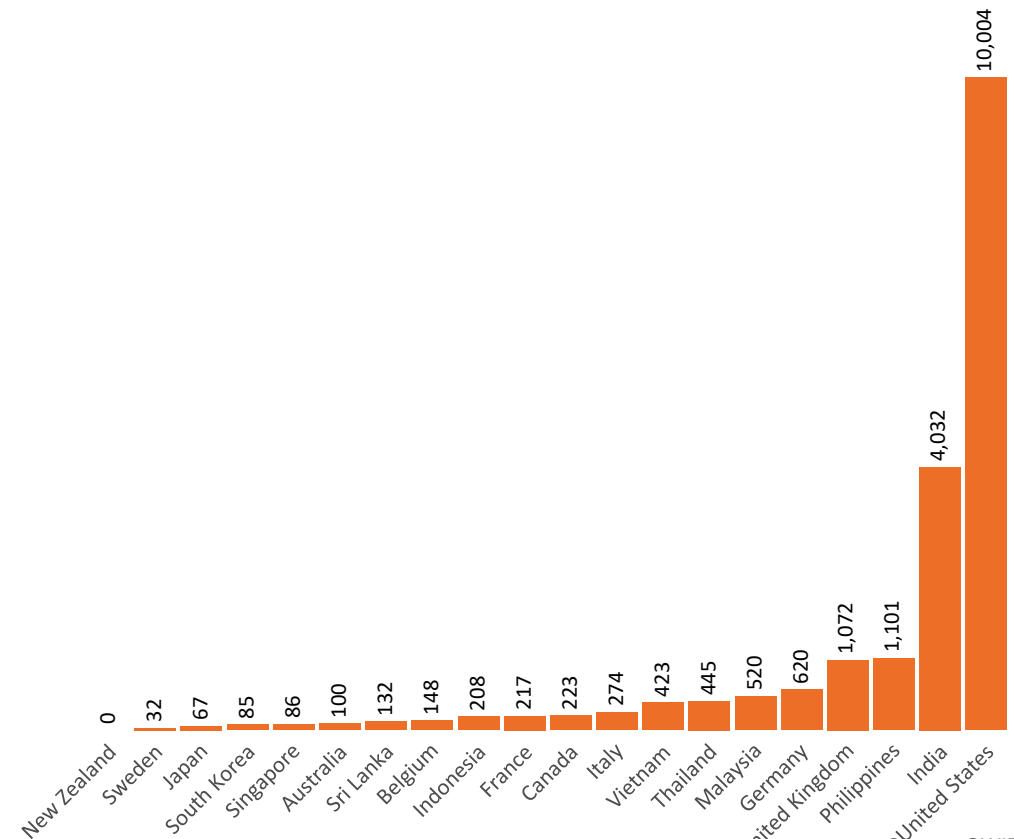
International data – COVID-19

New daily cases per million in 2021, Australia and G7 countries
Smoothed - 7 day average



Source: OWID
Data downloaded: 31 Oct 2021 08:47
Latest data: 29 Oct 2021


COVID-19 deaths in past 7 days - Australia and select countries



Source: OWID
Data downloaded: 31 Oct 2021 08:47
Latest data: 29 Oct 2021

Data as at midnight:
30 Oct 2021

Pandemic Response Payments (Current)



2.36 million
People have received at least one COVID Disaster Payment (including ISP200)

\$12.63 billion
Paid Out as at 30 Oct 2021

5.29 million
Claims granted across three different payments




94%
of Claims Received Digitally



COVID Disaster Payment:	5.14 million claims received - 2.18 million individuals paid a total of \$12.21 billion.
\$200 Income Support Payment:	317,000 claims received - 181,000 individuals paid a total of \$262.80 million.
Pandemic Leave Disaster Payment:	114,000 claims received - 98,000 individuals paid a total of \$159.44 million.

CURRENT COVID-19 DISASTER PAYMENTS



THREE PAYMENTS AVAILABLE

COVID Disaster Payment
assisting during a lockdown event in a Commonwealth hotspot.

Income Support Payment \$200
for income support recipients who lost at least 8 hours of work.

Pandemic Leave Disaster Payment
for those who have to self-isolate, quarantine or care.

For more information visit:
servicesaustralia.gov.au

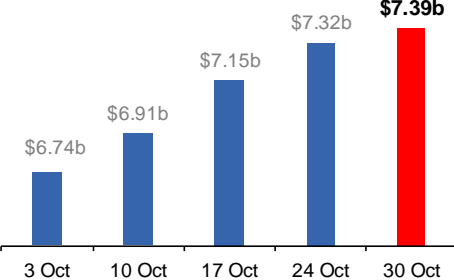
New South Wales
Active lockdown since 24 Jun
Partial reopening from 10 Oct

1.08m people have received at least one COVID Disaster Payment.

\$7.39b paid out as at 30 Oct 2021.

\$170m paid in initial and reoccurring payments in the week ending 24 Oct 2021.

Cumulative payments made by State since activation on 1 Jul 2021.



Date	Cumulative Payments (\$b)
3 Oct	\$6.74b
10 Oct	\$6.91b
17 Oct	\$7.15b
24 Oct	\$7.32b
30 Oct	\$7.39b

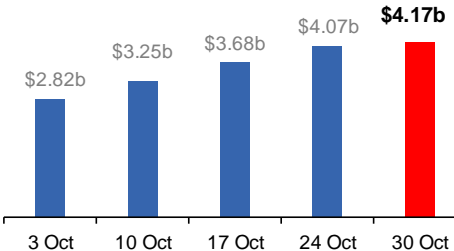
Victoria
Active lockdown (#6) since 6 Aug

737,000 people have received at least one COVID Disaster Payment.

\$4.17b paid out as at 30 Oct 2021.

\$397m paid in initial and reoccurring payments in the week ending 24 Oct 2021.

Cumulative payments made by State since activation on 8 Jun 2021.



Date	Cumulative Payments (\$b)
3 Oct	\$2.82b
10 Oct	\$3.25b
17 Oct	\$3.68b
24 Oct	\$4.07b
30 Oct	\$4.17b

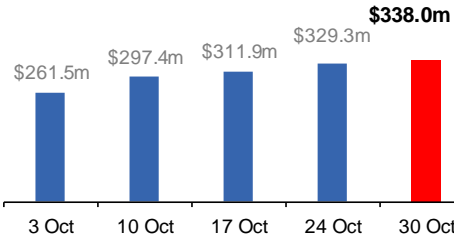
Australian Capital Territory
Active lockdown since 12 Aug
Partial reopening from 14 Oct

65,000 people have received at least one COVID Disaster Payment.

\$338.0m paid out as at 30 Oct 2021.

\$17m paid in initial and reoccurring payments in the week ending 24 Oct 2021.

Cumulative payments made by State since activation on 20 Aug 2021.



Date	Cumulative Payments (\$m)
3 Oct	\$261.5m
10 Oct	\$297.4m
17 Oct	\$311.9m
24 Oct	\$329.3m
30 Oct	\$338.0m

Tasmania
Lockdown from 15 Oct to 18 Oct
Claiming period ends 12 Nov

3,800 people have received at least one COVID Disaster Payment.

\$2.0m paid out as at 30 Oct 2021.

\$390,000 paid in initial payments in the week ending 24 Oct 2021.

Cumulative payments made by State since activation on 22 Oct 2021.



Date	Cumulative Payments (\$)
24 Oct	\$390,000
30 Oct	\$2.0m

Data as at midnight:
30 Oct 2021

Pandemic Response Payments (Closed Events)

CLOSED COVID-19 DISASTER PAYMENTS


Northern Territory

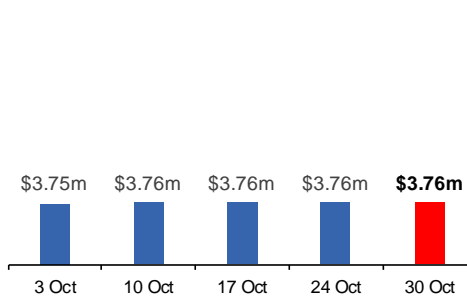
Lockdown from 18 – 20 Jul
Claiming period ended 13 Sep

5,804 people have received at least one COVID Disaster Payment.

\$3.76m paid out as at 30 Oct 2021.

\$4,000 paid in initial payments in the week ending 24 Oct 2021.

 Cumulative payments made by State since activation on 25 Aug 2021.




Queensland

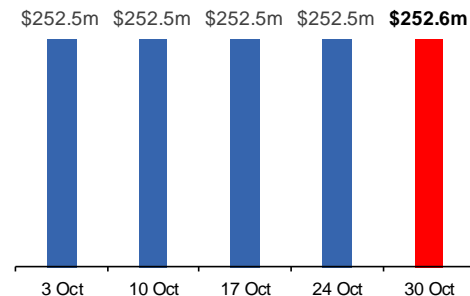
Lockdown from 31 Jul – 11 Aug
Claiming period ended 28 Aug

196,000 people have received at least one COVID Disaster Payment.

\$252.6m paid out as at 30 Oct 2021.

\$19,000 paid in initial and reoccurring payments in the week ending 24 Oct 2021.

 Cumulative payments made by State since activation on 7 Aug 2021.




South Australia

Lockdown from 21 – 27 Jul
Claiming period ended 17 Aug

86,000 people have received at least one COVID Disaster Payment.

\$48.2m paid out as at 30 Oct 2021.

\$1,000 paid in initial payments in the week ending 24 Oct 2021.

 Cumulative payments made by State since activation on 28 Jul 2021.

