



Australian Government
Operation COVID Shield

COVID-19 Vaccine Rollout

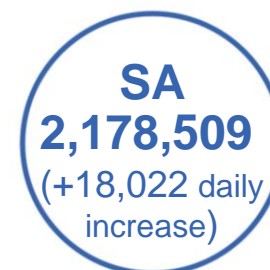
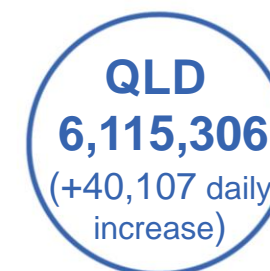
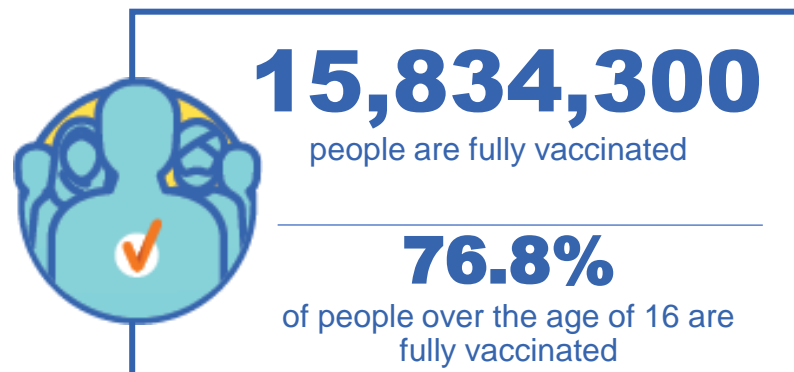
30 October 2021

Data as at:
29 Oct 2021

Total vaccine doses



35,487,134 total vaccine
doses administered nationally as at 29 October
+209,947 recorded in the last 24 hours



*Administration state breakdown indicates state in which a vaccine was administered

**Overall dose count includes instances of more than two doses per person in a small number of cases.

Source: Australian Immunisation Register

Data as at:
29 Oct 2021

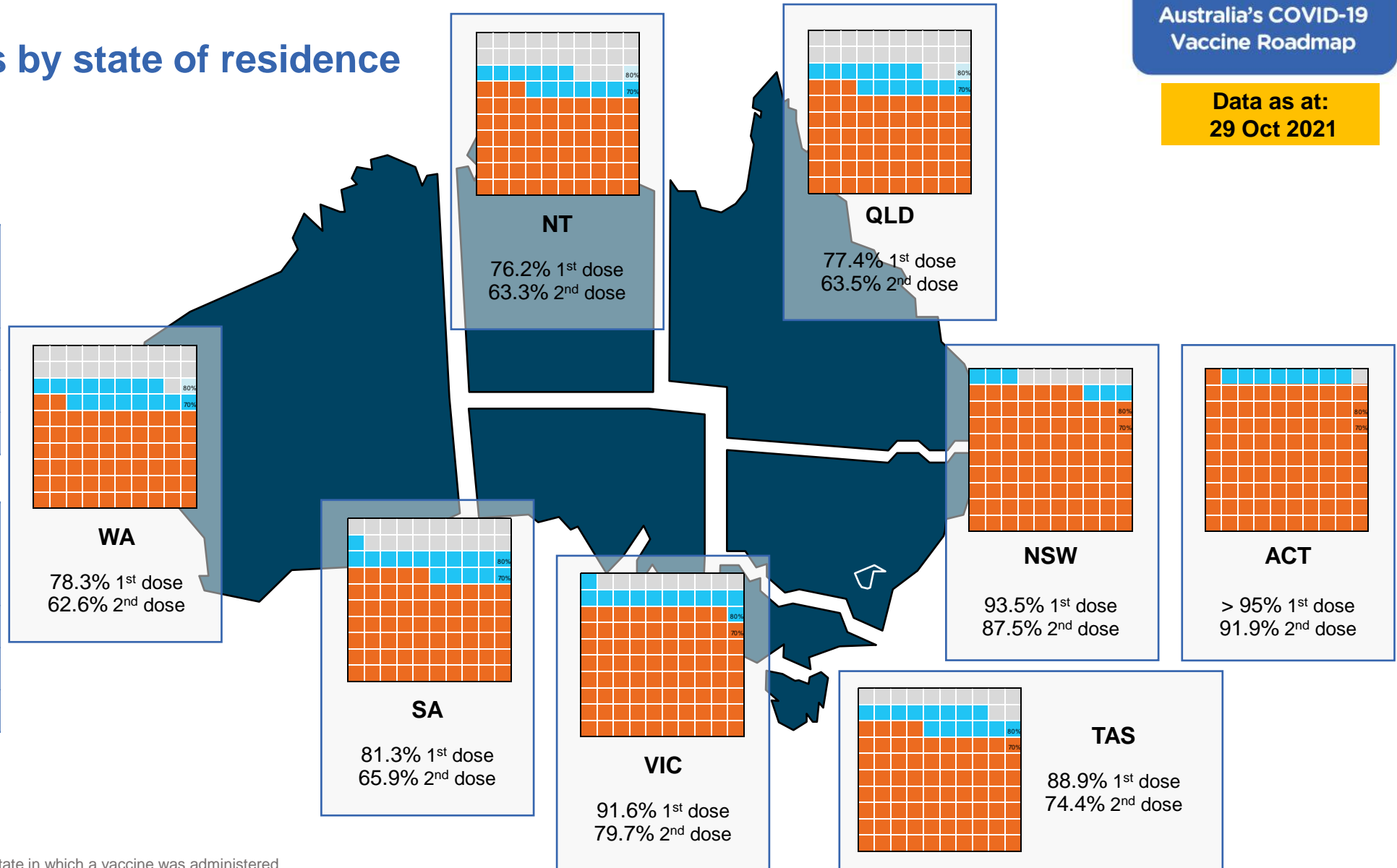
Vaccinations by state of residence

First doses

Age	Today	4 weeks ago	8 weeks ago
16+	88.1%	79.7%	63.3%
50+	>95%	90.4%	81.9%
70+	>95%	>95%	90.4%

Fully vaccinated

Age	Today	4 weeks ago	8 weeks ago
16+	76.8%	56.7%	38.6%
50+	85.7%	73.3%	57.3%
70+	90.1%	80.6%	68.0%



*Residential state may differ from the state in which a vaccine was administered

Commonwealth and Jurisdiction vaccine doses administered

Data as at:
29 Oct 2021



35,487,134 total vaccine
doses administered nationally as at 29 October
+ 209,947 recorded in the last 24 hours



14,636,705
doses administered by state
and territory facilities
+ 63,142
recorded in the last 24 hours



20,850,429
doses administered by
commonwealth facilities
+ 146,805
recorded in the last 24 hours

19,799,023 total vaccine doses
administered in primary care settings
1,051,406 total vaccine doses
administered in aged care and disability
settings

NSW	Jurisdictions	Commonwealth
Cumulative	4,093,542	8,258,696
Daily increase	6,292	40,664

VIC	Jurisdictions	Commonwealth
Cumulative	4,492,220	5,306,429
Daily increase	22,196	47,621

QLD	Jurisdictions	Commonwealth
Cumulative	2,510,829	3,604,477
Daily increase	13,857	26,250

WA	Jurisdictions	Commonwealth
Cumulative	1,477,778	1,622,274
Daily increase	8,904	16,223

TAS	Jurisdictions	Commonwealth
Cumulative	407,391	331,260
Daily increase	1,328	2,506

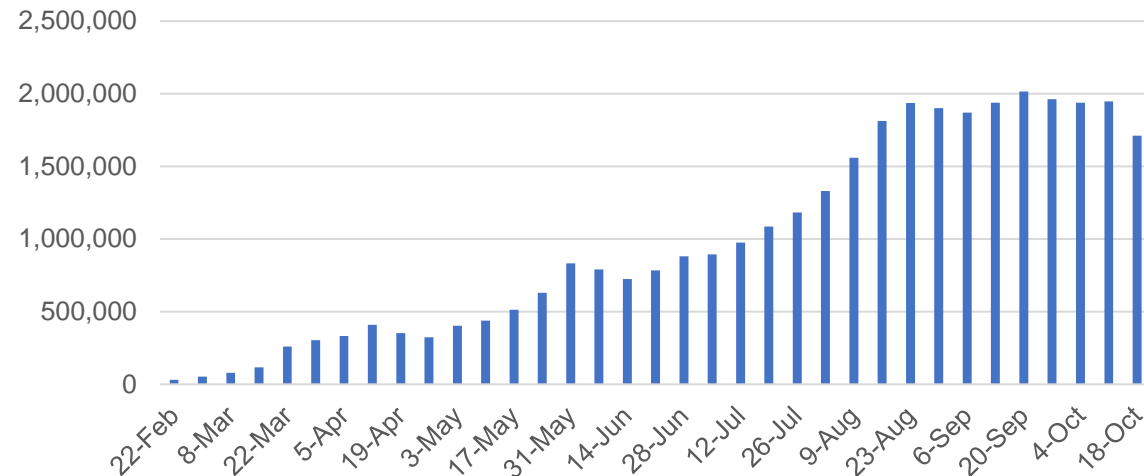
SA	Jurisdictions	Commonwealth
Cumulative	1,022,136	1,156,373
Daily increase	7,706	10,316

ACT	Jurisdictions	Commonwealth
Cumulative	441,563	443,289
Daily increase	1,774	2,220

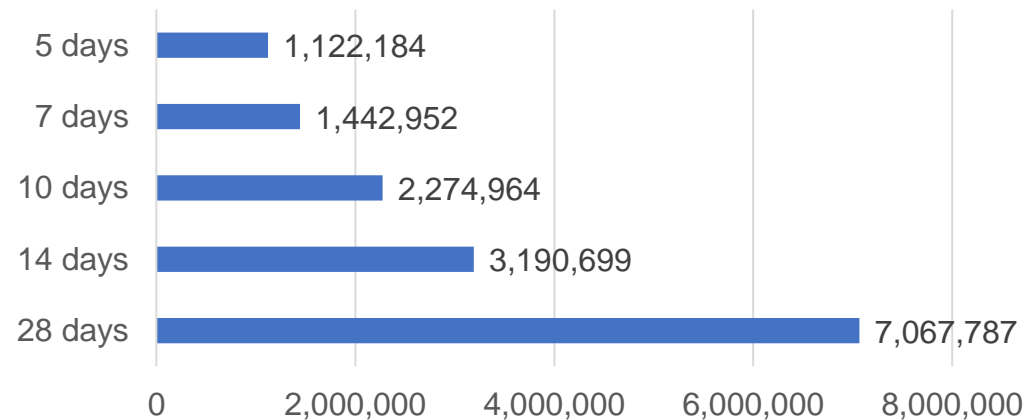
NT	Jurisdictions	Commonwealth
Cumulative	191,246	127,631
Daily increase	1,085	1,005

Vaccine milestone charts

Jabs in arms by week



Doses Reported

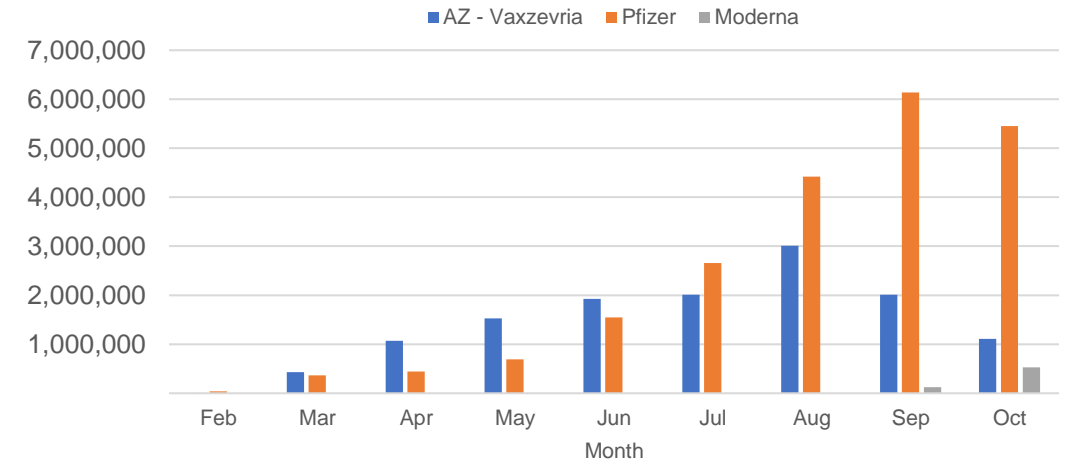


*Sourced from the Australian Immunisation Register.

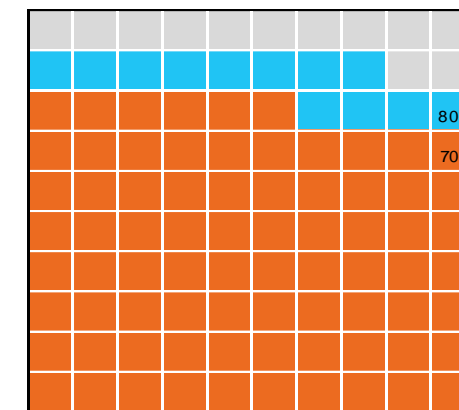
Data as at:
29 Oct 2021

Australia's COVID-19
Vaccine Roadmap

Doses by administration month and vaccine type



Eligible population percentage coverage



1st dose: 88.1% 2nd dose: 76.8%

*Each square represents 1% of the national population. Squares are filled as milestones are achieved.

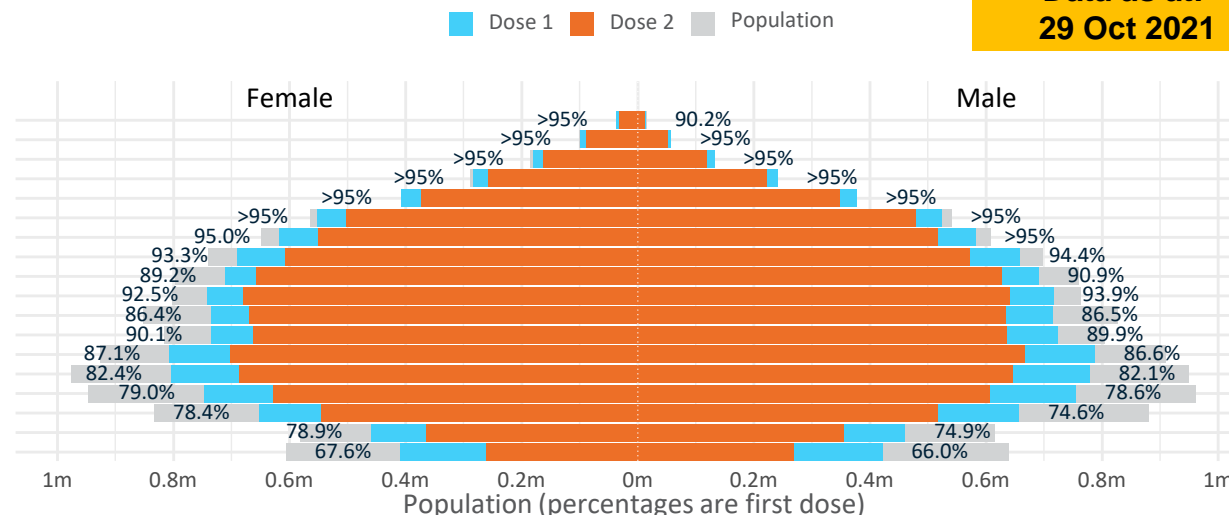
Data as at:
29 Oct 2021

Doses by age and sex

First and second doses by age and sex

	16+	50+	70+	12-15
Dose 1	88.10% (18,165,610 doses / 20,619,959 people)	>95% (8,318,515 doses / 8,749,703 people)	>95% (2,906,646 doses / 2,934,706 people)	66.77% (830,602 doses / 1,243,990 people)
Dose 2	76.79% (15,834,300 doses / 20,619,959 people)	85.70% (7,498,104 doses / 8,749,703 people)	90.14% (2,645,200 doses / 2,934,706 people)	42.55% (529,267 doses / 1,243,990 people)

Age	Dose 1	Dose 2
95+	50,199 (94.9%)	43,871 (82.9%)
90-94	156,747 (>95%)	139,871 (88.3%)
85-89	312,742 (>95%)	281,462 (89.0%)
80-84	525,085 (>95%)	478,750 (90.6%)
75-79	785,346 (>95%)	720,486 (93.1%)
70-74	1,076,527 (>95%)	980,760 (88.8%)
65-69	1,200,205 (>95%)	1,066,994 (84.8%)
60-64	1,350,255 (94.0%)	1,180,472 (82.2%)
55-59	1,402,391 (90.1%)	1,283,857 (82.5%)
50-54	1,459,018 (93.3%)	1,321,581 (84.5%)
45-49	1,451,719 (86.6%)	1,303,005 (77.7%)
40-44	1,460,220 (90.1%)	1,298,948 (80.2%)
35-39	1,598,218 (87.1%)	1,371,969 (74.8%)
30-34	1,589,764 (82.6%)	1,337,718 (69.5%)
25-29	1,511,911 (79.3%)	1,239,794 (65.0%)
20-24	1,315,678 (76.8%)	1,065,605 (62.2%)
16-19	919,585 (76.9%)	719,157 (60.1%)
12-15	830,602 (66.8%)	529,267 (42.5%)



	AUS	ACT	NSW	NT	QLD	SA	TAS	VIC	WA
16 and over - dose 1	18,165,610	341,604	6,140,786	145,265	3,181,351	1,171,436	391,306	4,954,517	1,655,974
16 and over - dose 2	15,834,300	316,150	5,741,977	120,610	2,613,074	948,713	327,452	4,308,161	1,324,559
16 and over - population	20,619,959*	344,037	6,565,651	190,571	4,112,707	1,440,400	440,172	5,407,574	2,114,978
16 and over % with dose 1	88.10%	>95%	93.53%	76.23%	77.35%	81.33%	88.90%	91.62%	78.30%
16 and over % with dose 2	76.79%	91.89%	87.45%	63.29%	63.54%	65.86%	74.39%	79.67%	62.63%
50 and over - dose 1	8,318,515	132,609	2,745,378	52,013	1,581,444	614,253	206,583	2,137,820	798,338
50 and over - dose 2	7,498,104	125,221	2,596,864	45,688	1,376,351	524,741	181,689	1,929,157	679,692
50 and over - population	8,749,703	127,802	2,807,793	62,280	1,758,855	674,384	220,036	2,211,211	885,370
50 and over % with dose 1	>95%	>95%	>95%	83.51%	89.91%	91.08%	93.89%	>95%	90.17%
50 and over % with dose 2	85.70%	>95%	92.49%	73.36%	78.25%	77.81%	82.57%	87.24%	76.77%
70 and over - dose 1	2,906,646	43,081	967,058	10,875	554,092	232,591	76,155	733,997	268,658
70 and over - dose 2	2,645,200	40,622	914,056	9,666	495,517	201,658	67,464	666,541	233,167
70 and over - population	2,934,706	39,946	962,606	12,343	577,767	240,514	77,155	743,519	280,281
70 and over % with dose 1	>95%	>95%	>95%	88.11%	>95%	>95%	>95%	>95%	>95%
70 and over % with dose 2	90.14%	>95%	94.96%	78.31%	85.76%	83.84%	87.44%	89.65%	83.19%
12 to 15 - dose 1	830,602	19,343	309,136	6,964	132,867	38,775	15,179	248,592	54,578
12 to 15 - dose 2	529,267	15,420	235,996	3,889	71,626	16,371	5,333	155,221	22,872
12 to 15 - population	1,243,990	19,693	390,330	13,060	270,146	82,747	26,308	308,611	132,869
12 to 15 % with dose 1	66.77%	>95%	79.20%	53.32%	49.18%	46.86%	57.70%	80.55%	41.08%
12 to 15 % with dose 2	42.55%	78.30%	60.46%	29.78%	26.51%	19.78%	20.27%	50.30%	17.21%

*National population will not equal sum of listed jurisdictions due to a small number of people counted in national population residing in some 'other' territories. Sum of state doses will not add to national total as some records are unable to be geocoded to a State or Territory.

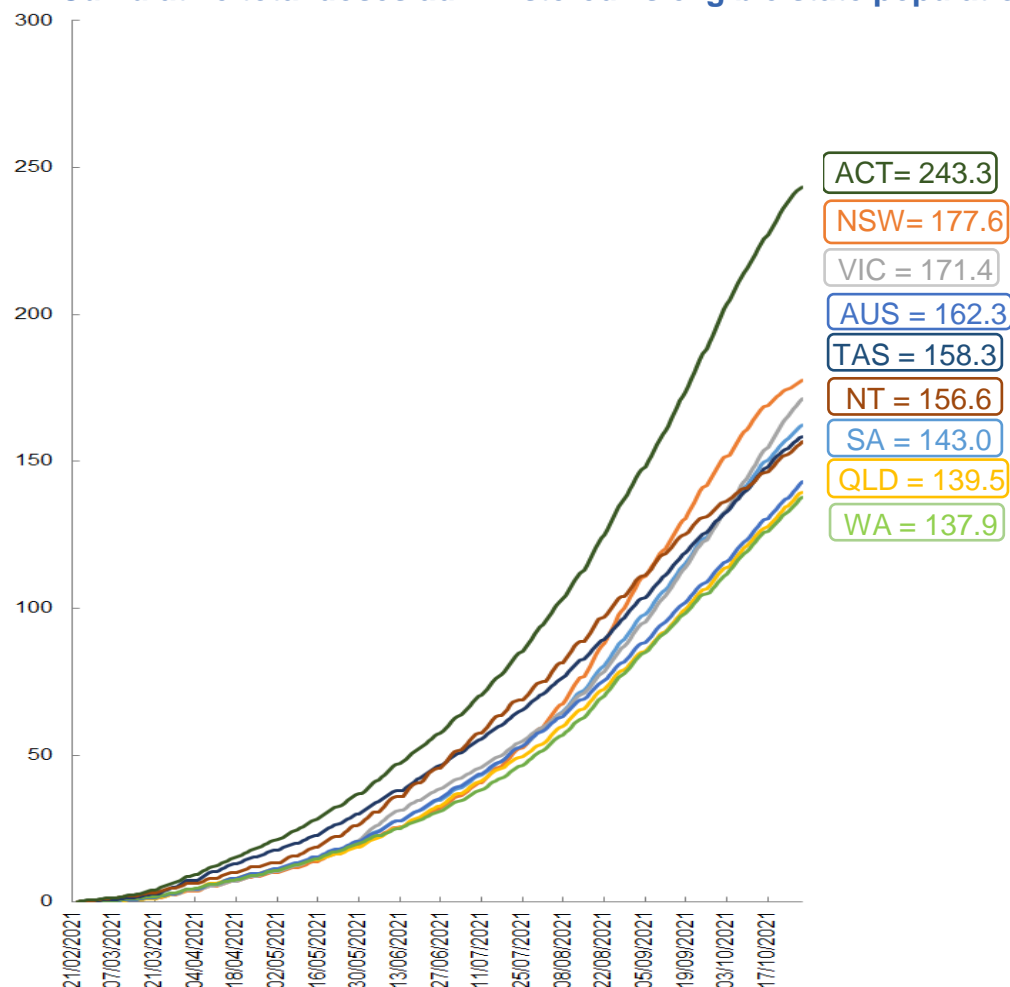
Doses sourced from Australian Immunisation Register, population from ABS ERP June 2020

Vaccinations by location

Data as at:
29 Oct 2021

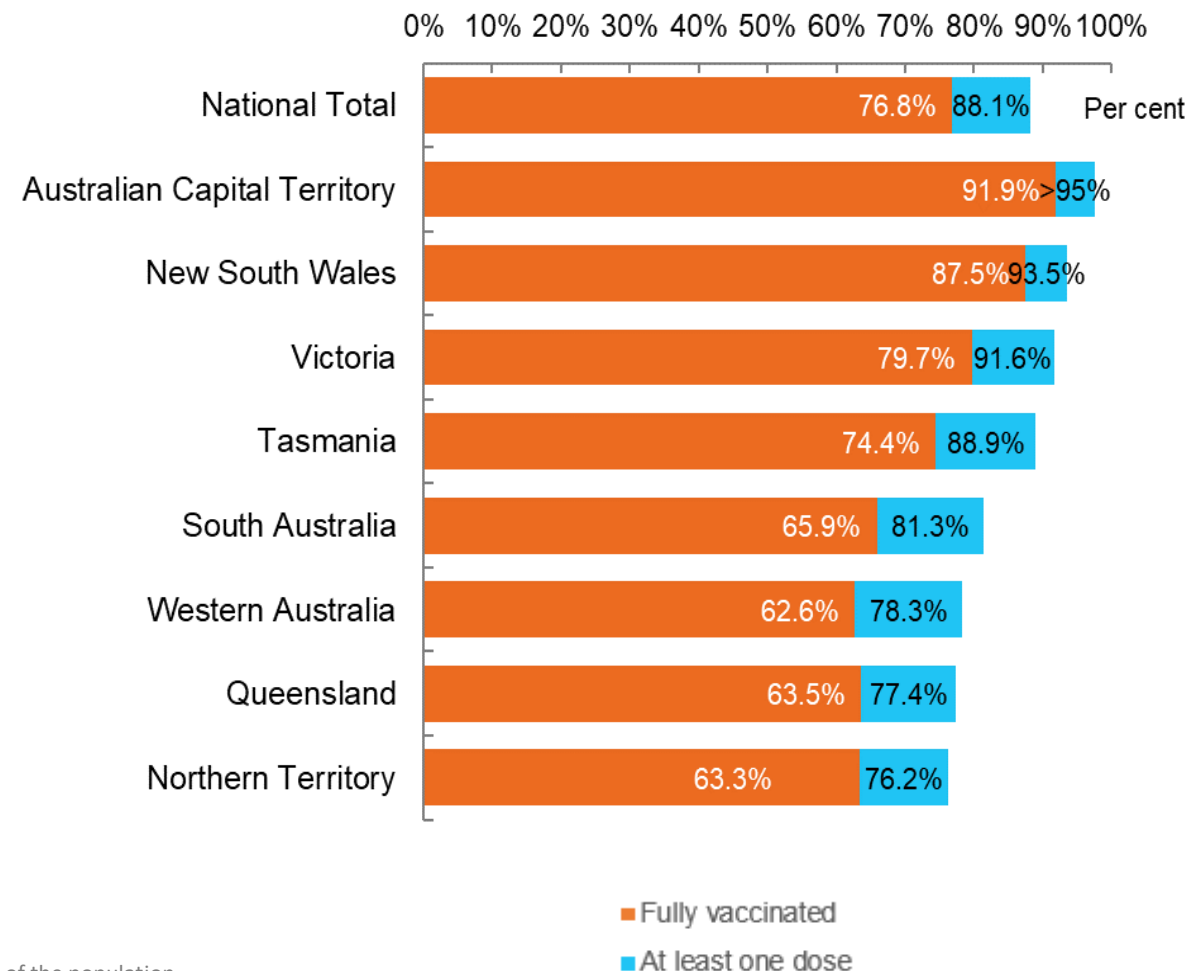
Australia's COVID-19
Vaccine Roadmap

Cumulative total doses administered vs eligible state populations*



*Not an indication of percentage vaccinated, numbers will exceed 100 due to multiple doses required per person of the population. All doses are included, including those for the 12-15 cohort, and are based on vaccination provider location.

First and Second Doses by state of residence



Aboriginal and Torres Strait Islander peoples

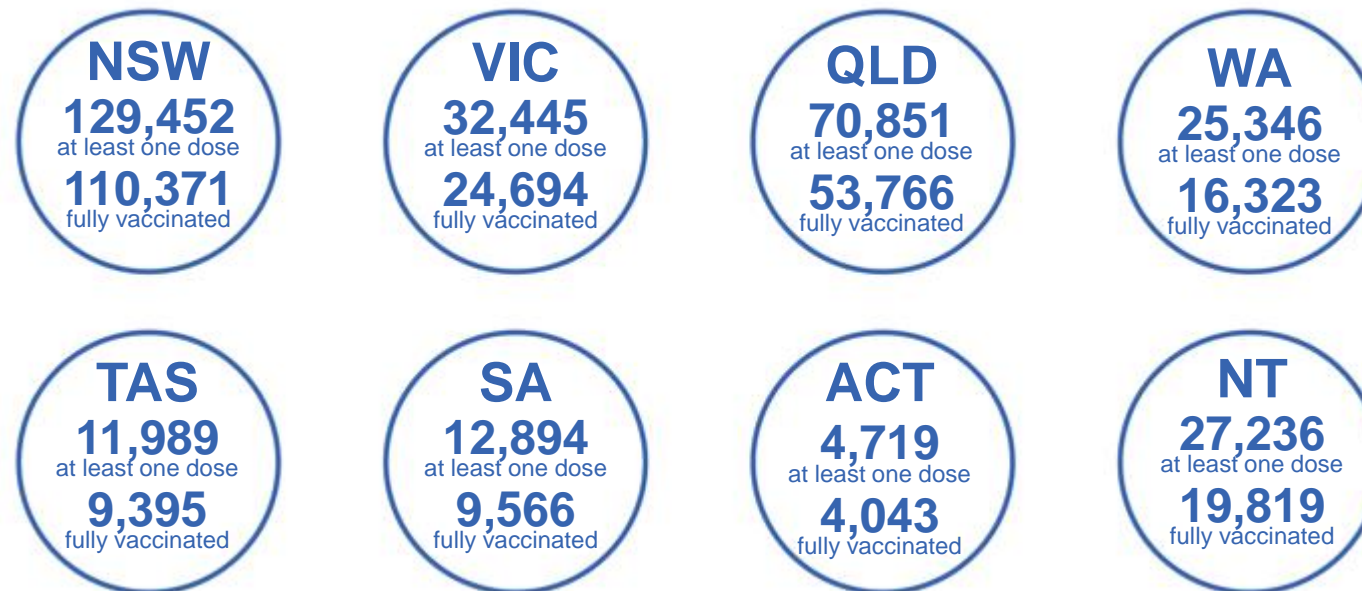
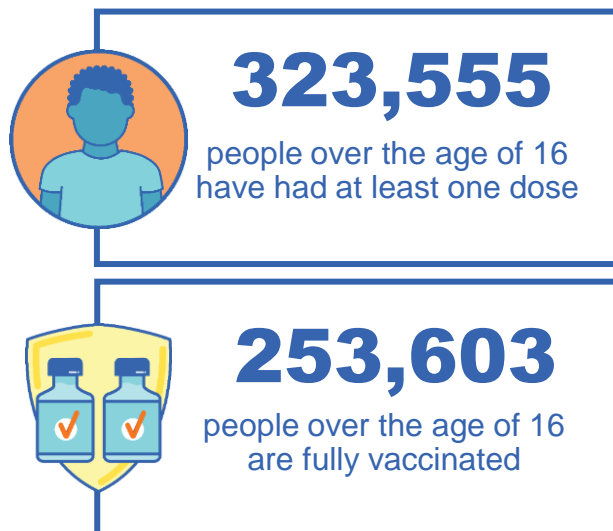
Number of people vaccinated

Data as at:
24 Oct 2021
Updated weekly

Australia's COVID-19
Vaccine Roadmap

169 Aboriginal community controlled health services (ACCHS)

0#	50	26	39	12	3	21	18
ACT	NSW	NT	QLD	SA	TAS	VIC	WA



8,623 people with at least one dose
5,626 people fully vaccinated

residing in other territories or with missing residential information

Source: Australian Immunisation Register

*Identifying as Aboriginal and Torres Strait Islander is optional and the estimated population may be under reported.

**Includes all Aboriginal and Torres Strait Islander peoples who have received a vaccination, not limited to those administered in an ACCHS setting

***Updated weekly.

#ACCHS in the ACT are currently operating as a Commonwealth Vaccine Clinics so not included to avoid double counting

Data as at:
29 Oct 2021

Commonwealth primary care



Primary care vaccine administration sites

5,592	137	169	3,408
GPs	CVCs	ACCHS	Pharmacies



19,799,023 total vaccine doses administered primary care settings as at 29 October
+ 145,285 recorded in the last 24 hours

Primary care vaccinations by provider type

	Doses administered	Daily increase	7 day increase
General Practice* includes other Commonwealth	18,152,202	104,457	705,437
Pharmacy	1,646,821	40,828	215,565

NSW
7,783,576
(+40,312 daily increase)

VIC
5,080,612
(+47,104 daily increase)

QLD
3,407,509
(+25,413 daily increase)

WA
1,549,782
(+15,652 daily increase)

TAS
321,287
(+2,488 daily increase)

SA
1,101,737
(+10,046 daily increase)

ACT
328,937
(+2,020 daily increase)

NT
111,539
(+980 daily increase)

114,044 doses administered to persons residing in other territories or with missing residential information

*General practice includes Commonwealth Vaccination Clinics, Aboriginal Community Health Centres, Royal Flying Doctor Service and other Commonwealth vaccination facilities

Source: Australian Immunisation Register

Data as at:
29 Oct 2021

Commonwealth aged care and disability doses administered



1,051,406 (+ 1,520 last 24 hours)

Total vaccine doses administered in aged care and disability facilities as at 29 October

Number of doses administered as part of the Commonwealth aged and disability care rollout

NSW
510,018
(+395 daily increase)

VIC
196,578
(+237 daily increase)

QLD
154,107
(+478 daily increase)

WA
70,226
(+215 daily increase)

TAS
16,866
(-9# daily increase)

SA
60,672
(+197 daily increase)

ACT
13,010
(+6 daily increase)

NT
5,777
(+4 daily increase)

*Sourced from the Australian Immunisation Register. Includes all persons vaccinated at participating residential aged care, disability and related industry settings.

**State level breakdown indicates the residential location and may not align to the state in which the vaccination occurred.

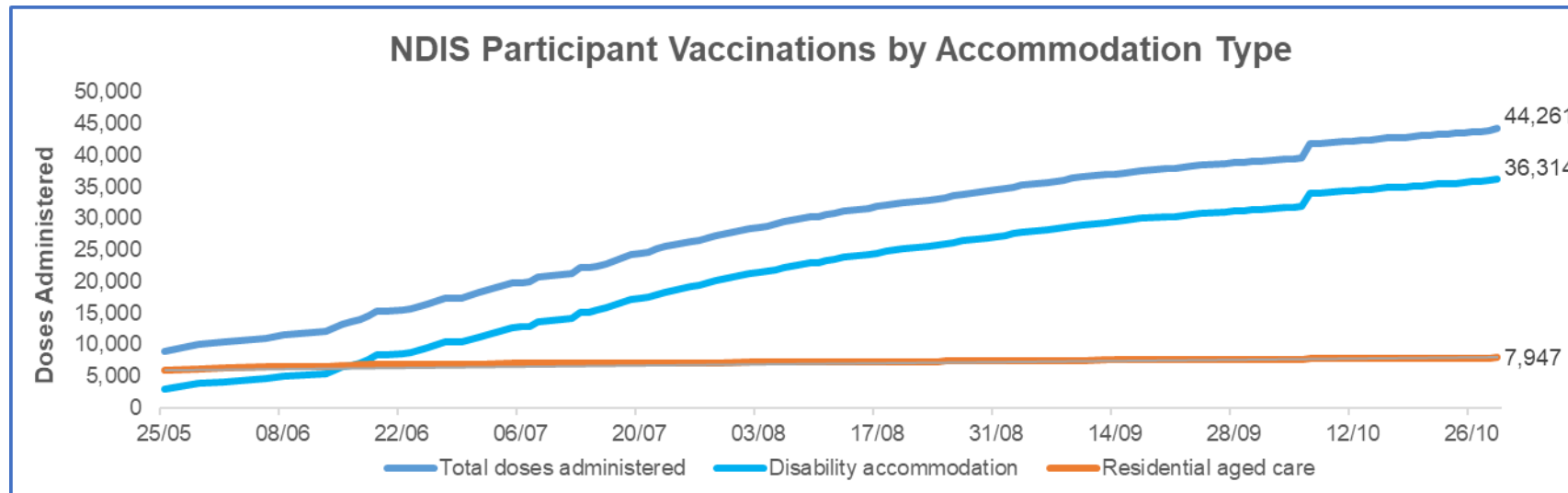
Numbers are calculated as difference in daily cumulative reported numbers to allow for historical corrections in all data sources. This can occasionally result in negative numbers, such as for TAS, where historical details about doses have been updated.

24,152 doses administered to persons residing in other territories or with missing residential information

Data as at:
29 Oct 2021*

Vaccination rate of people with disability and the disability workforce

Phase 1a – People with disability living in shared accommodation



	Total people with at least one dose	People fully vaccinated	Total number of individuals in cohort	Total doses administered	% People with at least one dose	% People fully vaccinated
NDIS participants living in shared accommodation **	22,912	21,349	27,603	44,261	83.0%	77.3%
NDIS screened workers ***	184,994	167,792	223,262	352,786	82.9%	75.2%



* Updates are available Monday to Friday on participants, and bi-weekly for workers, numbers may be up to four days old.

** Shared accommodation means two or more people with disability living in shared residential accommodation and NDIS participants living in Residential Aged Care accommodation as per the eligibility criteria of Phase 1a.

*** Total number of workers within the NDIS Commission Worker Screening database who have ever been successfully screened and linked to an NDIS registered provider or participant.

Source: Linkage between National Disability Insurance Agency data, NDIS Quality and Safeguards Commission data and the Australian Immunisation Register.

Residential aged care vaccination rollout

Residential aged care facilities status

100% Commonwealth facilities visited (2,573 planned sites)

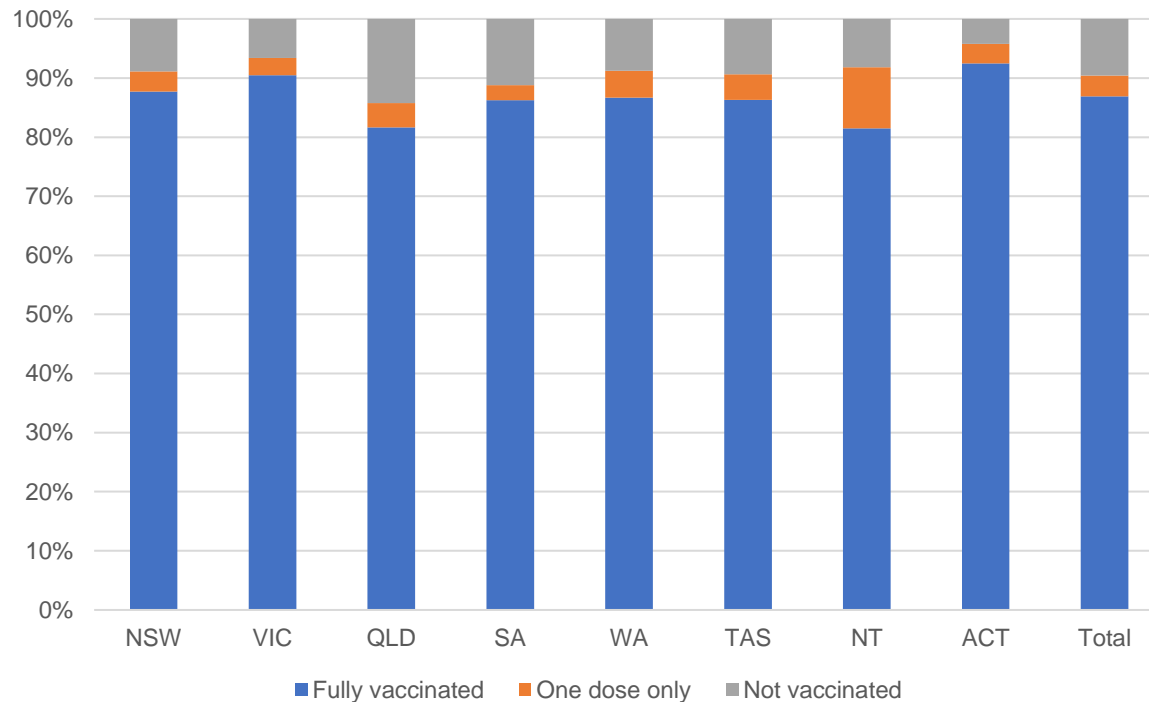
161,970 People fully vaccinated

168,511 People with at least one dose

Australia's COVID-19 Vaccine Roadmap

Data as at:
28 October 2021

Aged care resident vaccinations



Aged care worker vaccinations

Jurisdictions	Total workers with at least one dose	Workers fully vaccinated	% Workers with at least one dose	% Workers fully vaccinated
NSW	78,519	76,829	99.9%	97.7%
VIC	71,433	67,053	99.8%	93.7%
QLD	48,587	45,048	99.9%	92.6%
SA	27,302	25,547	100.0%	93.6%
WA	23,584	20,779	99.9%	88.0%
TAS	7,670	6,943	99.9%	90.4%
NT	830	807	99.5%	96.8%
ACT	2,969	2,874	99.9%	96.7%
Total	260,894	245,880	99.9%	94.1%

Source: My Aged Care Portal staff vaccination progress

**Resident vaccination information is reported manually by service providers

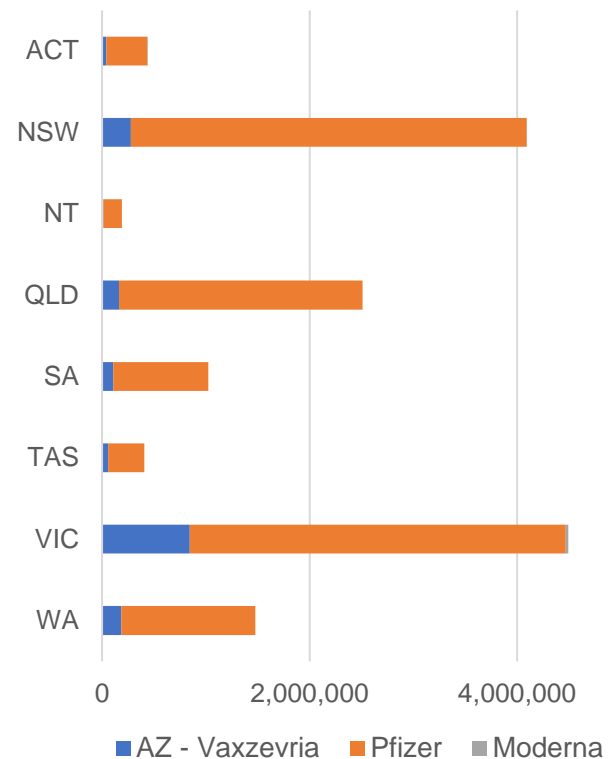
*Status updates are provided by facilities at least once per week. Reporting is updated Monday to Friday to encompass different facility updates being made on different days.

Data is sourced directly from Aged Care Service Providers and is not drawn or closely aligned with data from AIR due to inconsistencies and potential lags in uploading of records.

Data as at:
29 Oct 2021

Jurisdiction administered

Total vaccine doses administered in State and Territory clinics as at 29 October



14,636,705 total vaccine doses administered
in State and Territory clinics as at 29 October
+ 63,142 recorded in the last 24 hours
+ 506,179 recorded in the last 7 days

NSW
4,093,542
(+6,292 daily
increase)

VIC
4,492,220
(+22,196 daily
increase)

QLD
2,510,829
(+13,857 daily
increase)

WA
1,477,778
(+8,904 daily
increase)

TAS
407,391
(+1,328 daily
increase)

SA
1,022,136
(+7,706 daily
increase)

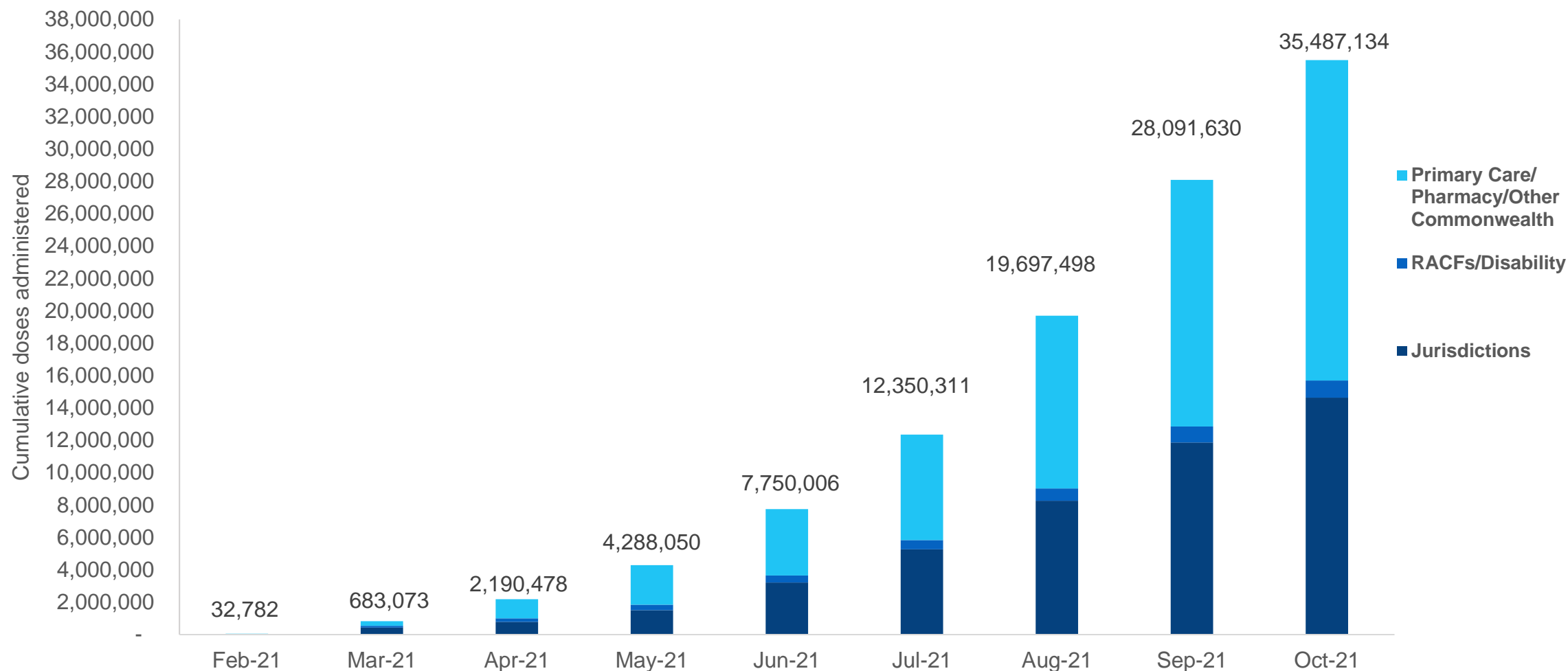
ACT
441,563
(+1,774 daily
increase)

NT
191,246
(+1,085 daily
increase)

*Sourced from the Australian Immunisation Register and self-reported data. Numbers are calculated as difference in daily cumulative reported numbers to allow for historical corrections in all self-reported data sources.

Cumulative doses administered by channel

Data as at:
29 Oct 2021



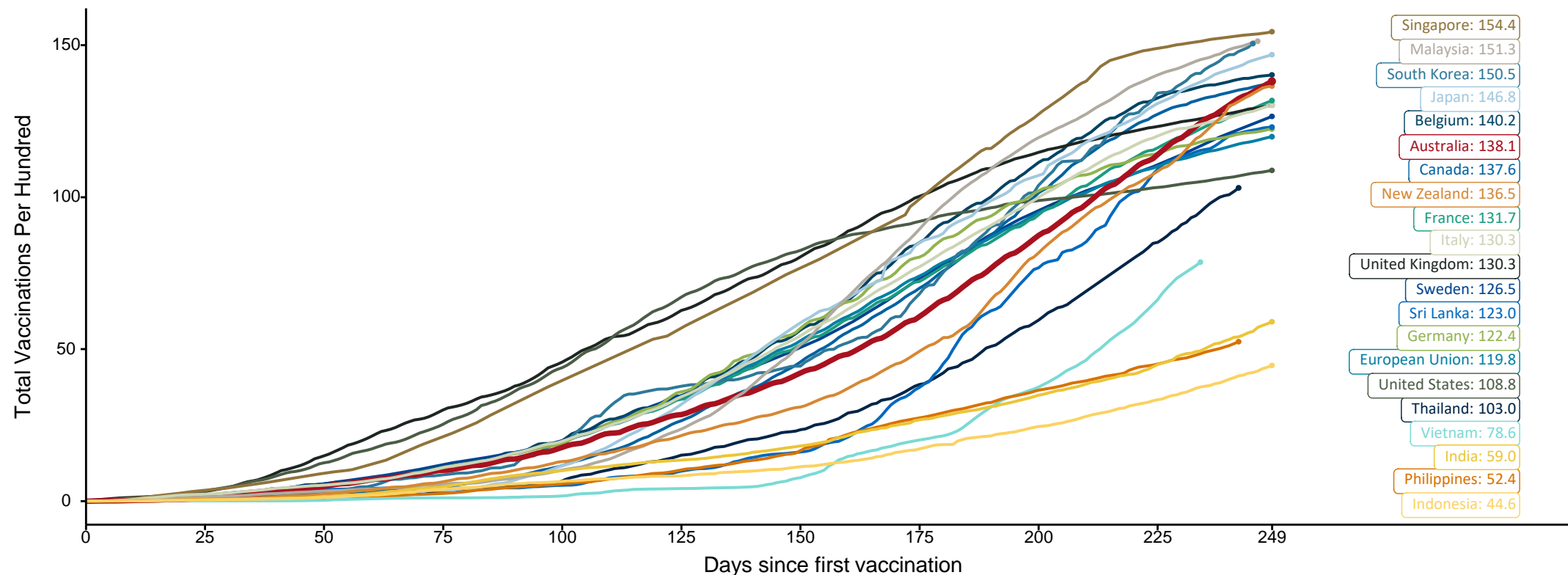
Source: Australian Immunisation Register

Doses at equivalent stages of rollout (Day 249)

Data as at:
29 Oct 2021

The x-axis is truncated at the length of Australia's vaccination program. Countries with intermittent reporting have had their doses per 100 imputed to Australia's current stage of rollout. Israel excluded as it is beyond scale of the graph

Cumulative doses administered (29 Oct): **35,487,134**

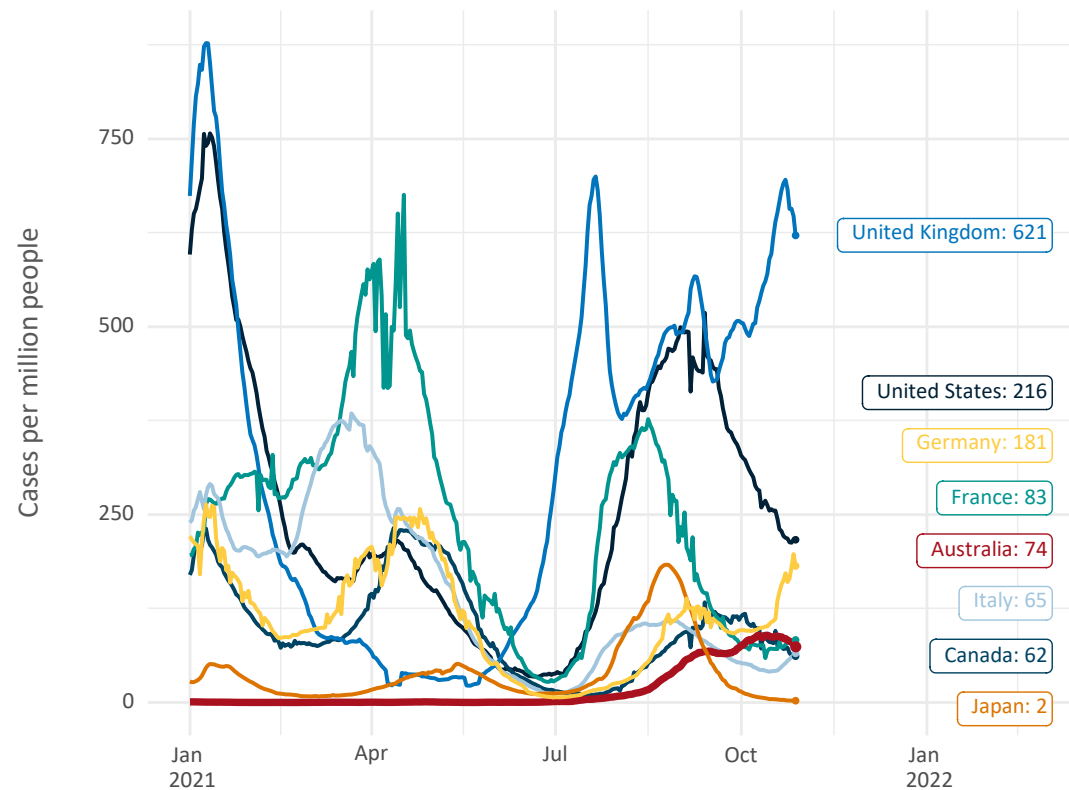


Note: From 15 September 2021, data for Australia includes all doses administered to people 12 and over. Prior to 15 September, data was for 16 and over
Source: Department of Health (Australia), Our World in Data (international)
Latest data: 29 October

Data as at:
29 Oct 2021

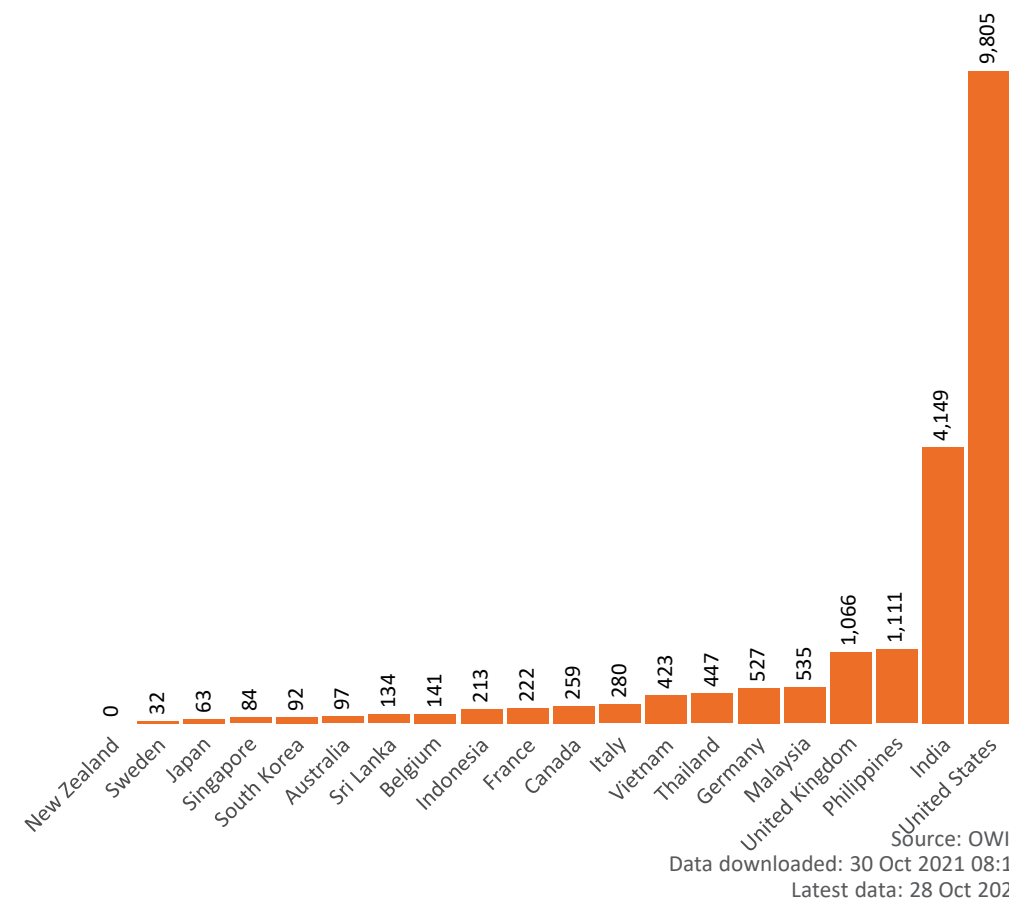
International data – COVID-19

New daily cases per million in 2021, Australia and G7 countries
Smoothed - 7 day average



Source: OWID
Data downloaded: 30 Oct 2021 08:10
Latest data: 28 Oct 2021

COVID-19 deaths in past 7 days - Australia and select countries



Pandemic Response Payments (Current)

Australia's COVID-19
Vaccine Roadmap

Data as at midnight:
29 Oct 2021



COVID Disaster Payment:	5.10 million claims received - 2.18 million individuals paid a total of \$12.18 billion.
\$200 Income Support Payment:	315,000 claims received - 180,000 individuals paid a total of \$262.29 million.
Pandemic Leave Disaster Payment:	114,000 claims received - 98,000 individuals paid a total of \$159.37 million.



COVID Disaster Payment

assisting during a lockdown
event in a Commonwealth
hotspot.

Income Support Payment \$200

for income support
recipients who lost at
least 8 hours of work.

Pandemic Leave Disaster Payment

for those who have to
self-isolate, quarantine
or care.

For more information visit:
servicesaustralia.gov.au

CURRENT COVID-19 DISASTER PAYMENTS

New South Wales

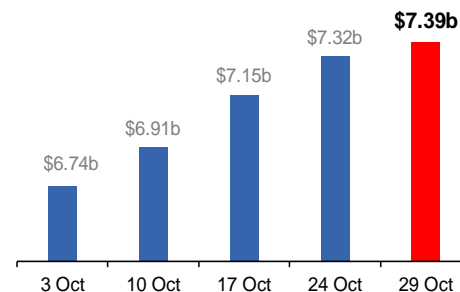
Active lockdown since 24 Jun
Partial reopening from 10 Oct

**1.08m people have received at least
one COVID Disaster Payment.**

\$7.39b paid out as at 29 Oct 2021.

**\$170m paid in initial and reoccurring
payments in the week ending
24 Oct 2021.**

Cumulative payments made by State since
activation on 1 Jul 2021.



Victoria

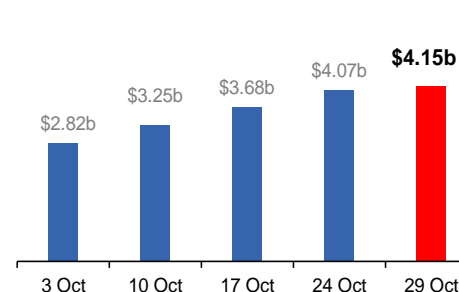
Active lockdown (#6) since 6 Aug

**736,000 people have received at least
one COVID Disaster Payment.**

\$4.15b paid out as at 29 Oct 2021.

**\$397m paid in initial and reoccurring
payments in the week ending
24 Oct 2021.**

Cumulative payments made by State since
activation on 8 Jun 2021.



Australian Capital Territory

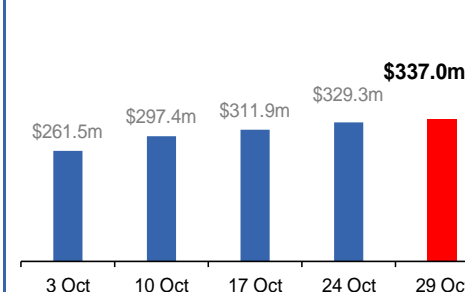
Active lockdown since 12 Aug
Partial reopening from 14 Oct

**65,000 people have received at least
one COVID Disaster Payment.**

\$337.0m paid out as at 29 Oct 2021.

**\$17m paid in initial and reoccurring
payments in the week ending
24 Oct 2021.**

Cumulative payments made by State since
activation on 20 Aug 2021.



Tasmania

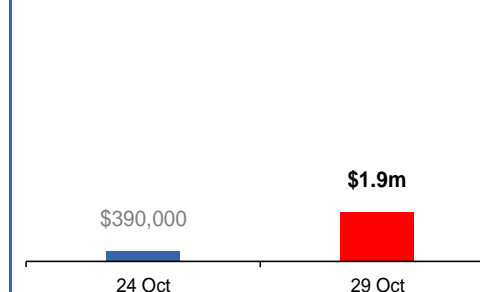
Lockdown from 15 Oct to 18 Oct
Claiming period ends 12 Nov

**3,700 people have received at least one
COVID Disaster Payment.**

\$1.9m paid out as at 29 Oct 2021.

**\$390,000 paid in initial payments in the
week ending 24 Oct 2021.**

Cumulative payments made by State since
activation on 22 Oct 2021.



Pandemic Response Payments (Closed Events)

Data as at midnight:
29 Oct 2021

CLOSED COVID-19 DISASTER PAYMENTS

