



Australian Government
Operation COVID Shield

COVID-19 Vaccine Roll-out

03 October 2021

Data as at:
02 Oct 2021

Total vaccine doses



28,630,736 total vaccine
doses administered nationally as at 02 October
+211,389 recorded in the last 24 hours



16,364,525

people have had at least one
dose

79.4%

of people over the age of 16
have had at least one dose



11,654,963

people are fully vaccinated

56.5%

of people over the age of 16 are
fully vaccinated

NSW
10,387,545
(+64,184 daily
increase)

VIC
7,506,183
(+72,198 daily
increase)

QLD
4,927,434
(+35,414 daily
increase)

WA
2,469,969
(+19,010 daily
increase)

TAS
608,473
(+1,680 daily
increase)

SA
1,751,598
(+10,433 daily
increase)

ACT
704,456
(+7,582 daily
increase)

NT
275,078
(+888 daily
increase)

*Administration state breakdown indicates state in which a vaccine was administered

**Overall dose count includes instances of more than two doses per person in a small number of cases.

Data as at:
02 Oct 2021

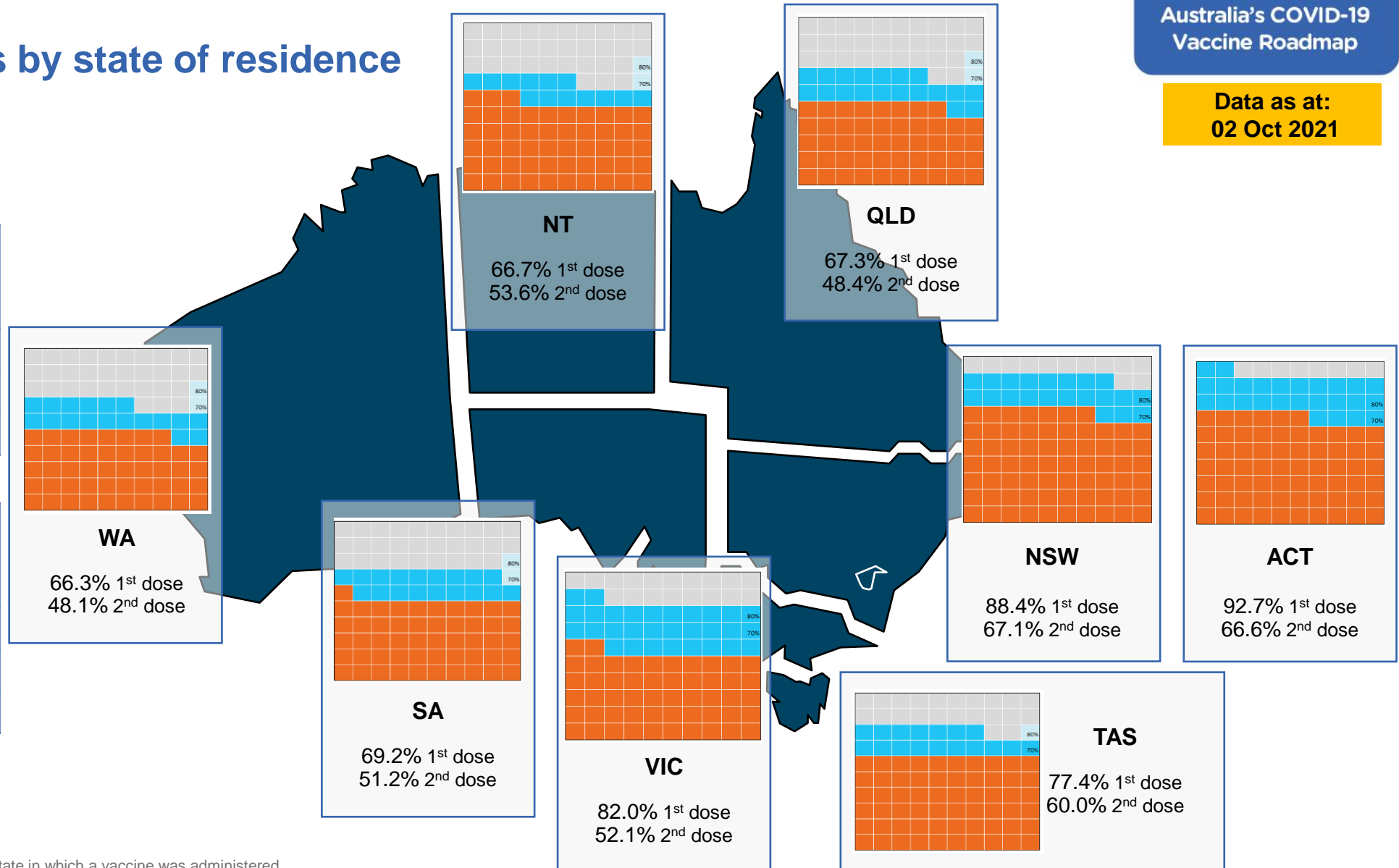
Vaccinations by state of residence

First doses

Age	Today	4 weeks ago	8 weeks ago
16+	79.4%	63.6%	44.8%
50+	90.0%	81.8%	69.9%
70+	95.2%	89.8%	82.8%

Fully vaccinated

Age	Today	4 weeks ago	8 weeks ago
16+	56.5%	38.8%	23.1%
50+	72.8%	57.5%	32.9%
70+	79.7%	67.7%	48.6%



*Residential state may differ from the state in which a vaccine was administered

Commonwealth and Jurisdiction vaccine doses administered

Data as at:
02 Oct 2021



28,630,736 total vaccine
doses administered nationally as at 02 October
+ 211,389 recorded in the last 24 hours



12,069,770
doses administered by state
and territory facilities
+ 95,449
recorded in the last 24 hours



16,560,966
doses administered by
commonwealth facilities
+ 115,940
recorded in the last 24 hours

15,552,163 total vaccine doses
administered in primary care settings
1,008,803 total vaccine doses
administered in aged care and disability
settings

NSW	Jurisdictions	Commonwealth
Cumulative	3,624,075	6,763,470
Daily increase	19,915	44,269

VIC	Jurisdictions	Commonwealth
Cumulative	3,589,745	3,916,438
Daily increase	34,934	37,264

QLD	Jurisdictions	Commonwealth
Cumulative	2,007,988	2,919,446
Daily increase	19,887	15,527

WA	Jurisdictions	Commonwealth
Cumulative	1,199,663	1,270,306
Daily increase	9,525	9,485

TAS	Jurisdictions	Commonwealth
Cumulative	334,760	273,713
Daily increase	0	1,680

SA	Jurisdictions	Commonwealth
Cumulative	803,838	947,760
Daily increase	6,264	4,169

ACT	Jurisdictions	Commonwealth
Cumulative	343,775	360,681
Daily increase	4,273	3,309

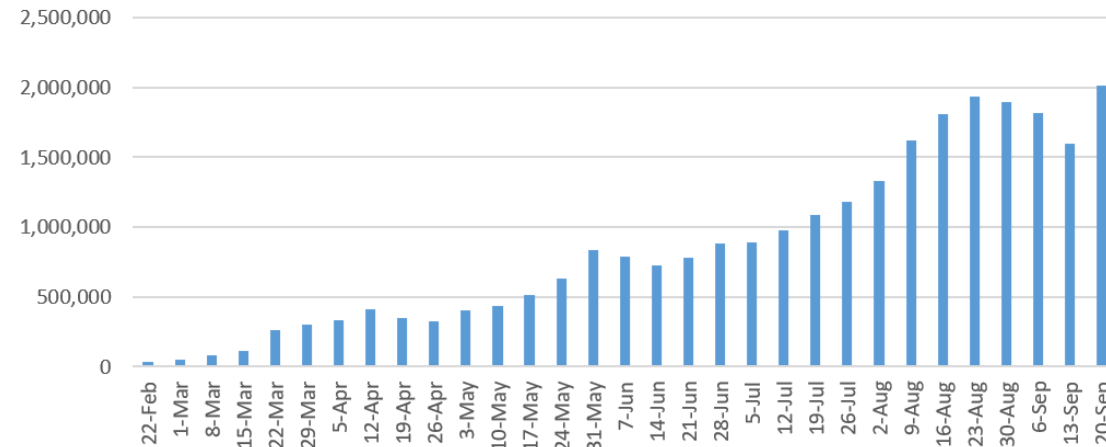
NT	Jurisdictions	Commonwealth
Cumulative	165,926	109,152
Daily increase	651	237

Vaccine milestone charts

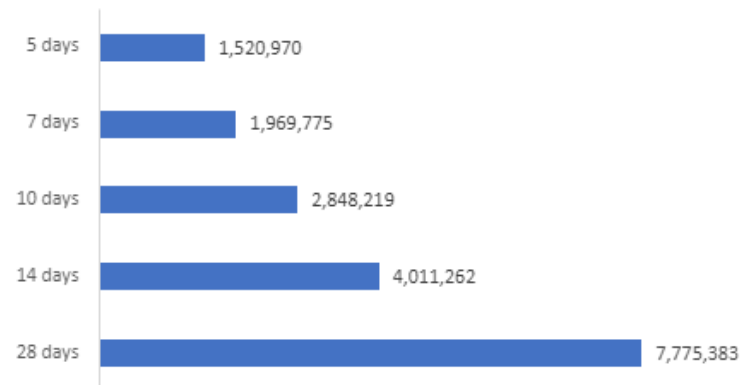
Data as at:
02 Oct 2021

Australia's COVID-19
Vaccine Roadmap

Jabs in arms by week

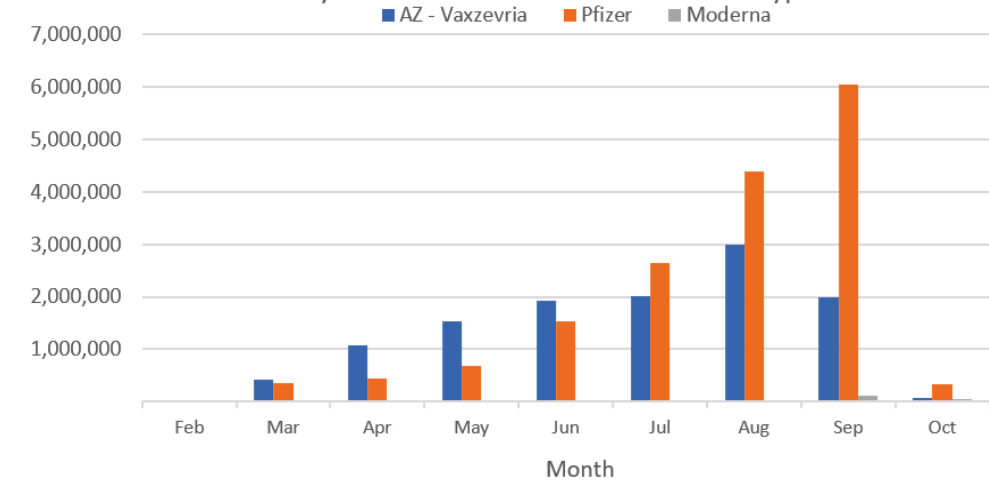


Doses reported

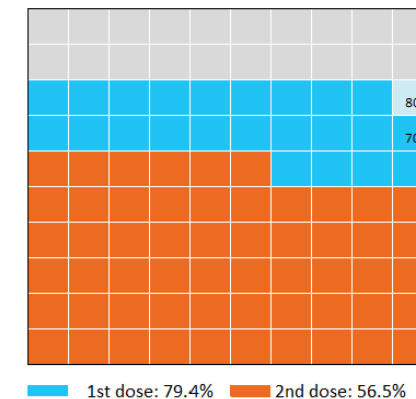


*Sourced from the Australian Immunisation Register.

Doses by administration month and vaccine type



Eligible population percentage coverage



*Each square represents 1% of the national population.
Squares are filled as milestones are achieved.

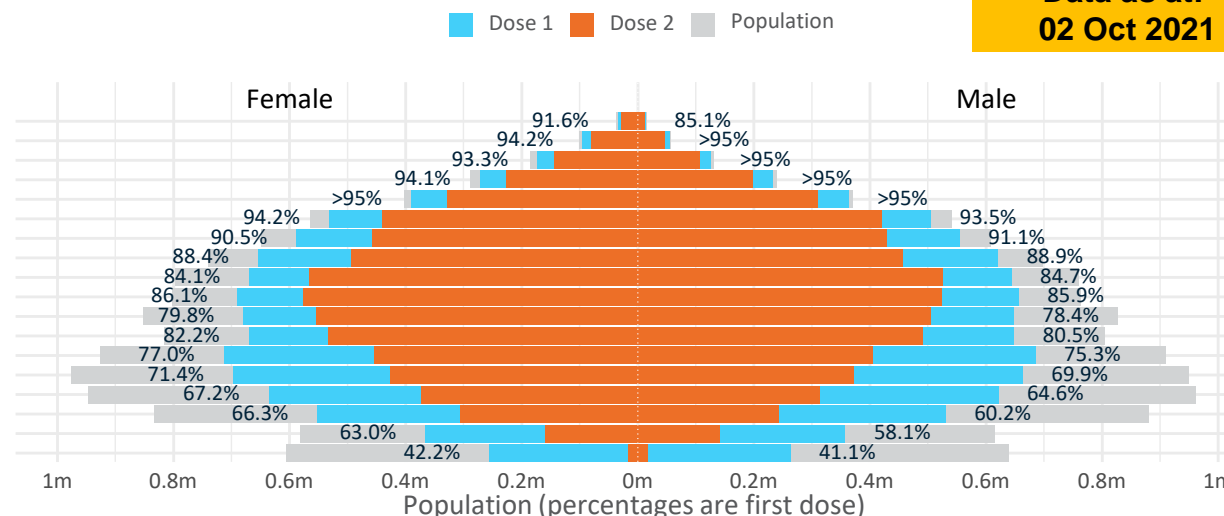
Doses by age and sex

First and second doses by age and sex

Australia's COVID-19
Vaccine Roadmap

Data as at:
02 Oct 2021

Age	Dose 1	Dose 2
95+	47,536 (89.8%)	39,679 (75.0%)
90-94	150,156 (94.8%)	125,673 (79.3%)
85-89	299,266 (94.6%)	250,052 (79.1%)
80-84	504,673 (>95%)	425,659 (80.5%)
75-79	753,264 (>95%)	637,649 (82.4%)
70-74	1,037,689 (93.9%)	860,240 (77.9%)
65-69	1,143,604 (90.9%)	887,508 (70.5%)
60-64	1,275,287 (88.8%)	950,495 (66.2%)
55-59	1,313,772 (84.5%)	1,091,796 (70.2%)
50-54	1,347,343 (86.1%)	1,099,200 (70.3%)
45-49	1,327,670 (79.2%)	1,059,096 (63.2%)
40-44	1,319,868 (81.5%)	1,025,057 (63.3%)
35-39	1,401,436 (76.4%)	860,811 (46.9%)
30-34	1,366,525 (71.0%)	800,067 (41.6%)
25-29	1,265,785 (66.4%)	689,755 (36.2%)
20-24	1,087,173 (63.5%)	550,430 (32.1%)
16-19	723,478 (60.5%)	301,796 (25.2%)
12-15	518,097 (41.6%)	34,973 (2.8%)



	AUS	ACT	NSW	NT	QLD	SA	TAS	VIC	WA
16 and over - dose 1	16,364,525	319,001	5,801,150	127,043	2,768,451	997,150	340,548	4,432,890	1,402,691
16 and over - dose 2	11,654,963	229,122	4,408,263	102,190	1,989,175	737,290	264,057	2,819,637	1,017,079
16 and over - population	20,619,959*	344,037	6,565,651	190,571	4,112,707	1,440,400	440,172	5,407,574	2,114,978
16 and over % with dose 1	79.36%	92.72%	88.36%	66.66%	67.31%	69.23%	77.37%	81.98%	66.32%
16 and over % with dose 2	56.52%	66.60%	67.14%	53.62%	48.37%	51.19%	59.99%	52.14%	48.09%
50 and over - dose 1	7,872,590	129,339	2,655,782	48,264	1,479,622	570,934	194,452	2,006,103	739,422
50 and over - dose 2	6,367,951	112,930	2,208,073	40,387	1,166,224	443,734	162,836	1,621,080	579,983
50 and over - population	8,749,703	127,802	2,807,793	62,280	1,758,855	674,384	220,036	2,211,211	885,370
50 and over % with dose 1	89.98%	>95%	94.59%	77.50%	84.12%	84.66%	88.37%	90.72%	83.52%
50 and over % with dose 2	72.78%	88.36%	78.64%	64.85%	66.31%	65.80%	74.00%	73.31%	65.51%
70 and over - dose 1	2,792,584	42,196	939,729	10,355	531,676	221,401	73,086	698,824	255,502
70 and over - dose 2	2,338,952	37,324	805,178	8,698	441,586	176,337	62,309	585,479	207,019
70 and over - population	2,934,706	39,946	962,606	12,343	577,767	240,514	77,155	743,519	280,281
70 and over % with dose 1	>95%	>95%	>95%	83.89%	92.02%	92.05%	94.73%	93.99%	91.16%
70 and over % with dose 2	79.70%	93.44%	83.65%	70.47%	76.43%	73.32%	80.76%	78.74%	73.86%
12 to 15 - dose 1	518,097	13,222	224,628	4,164	73,037	15,633	4,224	157,235	22,921
12 to 15 - dose 2	34,973	686	19,858	1,678	5,606	593	586	4,833	886
12 to 15 - population	1,243,990	19,693	390,330	13,060	270,146	82,747	26,308	308,611	132,869
12 to 15 % with dose 1	41.65%	67.14%	57.55%	31.88%	27.04%	18.89%	16.06%	50.95%	17.25%
12 to 15 % with dose 2	2.81%	3.48%	5.09%	12.85%	2.08%	0.72%	2.23%	1.57%	0.67%

*National population will not equal sum of listed jurisdictions due to a small number of people counted in national population residing in some 'other' territories. Sum of state doses will not add to national total as some records are unable to be geocoded to a State or Territory.

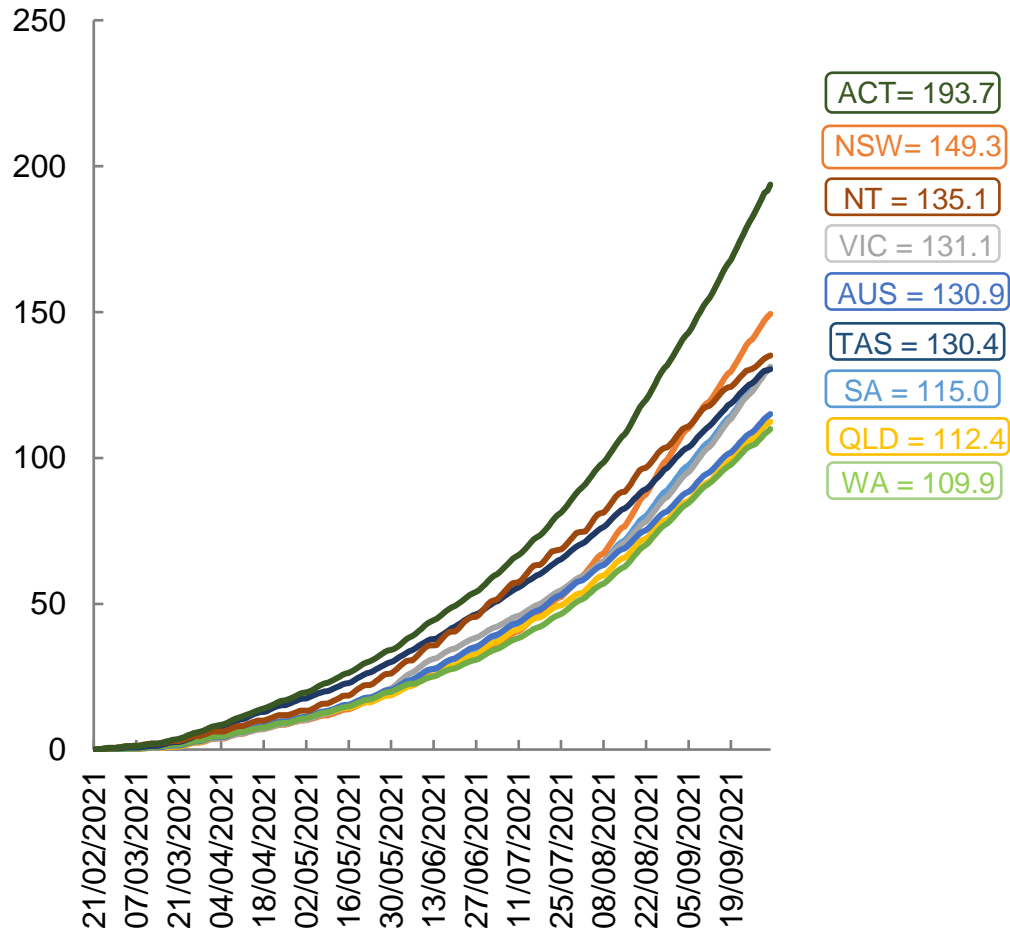
Doses sourced from Australian Immunisation Register, population from ABS ERP June 2020

Vaccinations by location

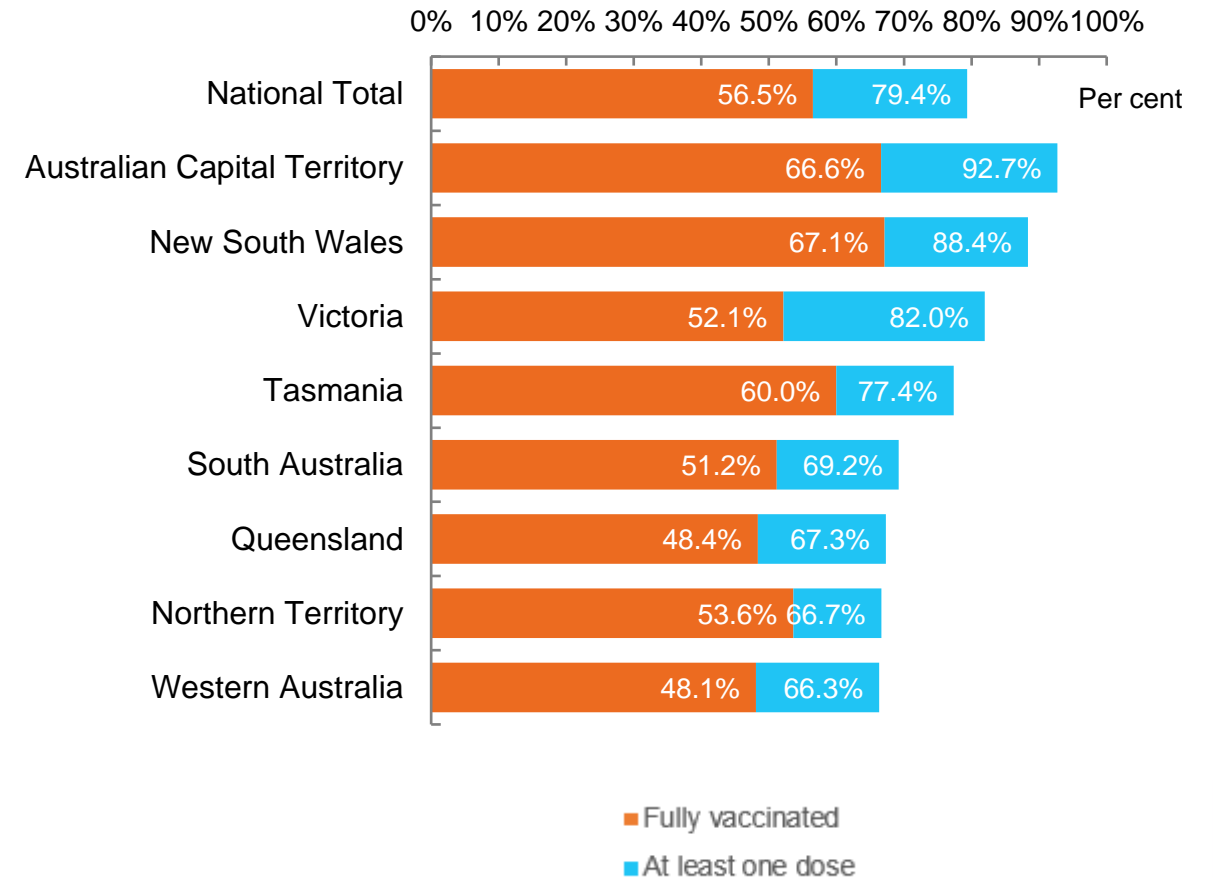
Data as at:
02 Oct 2021

Australia's COVID-19
Vaccine Roadmap

Cumulative total doses administered vs state populations*



First and Second Doses by state of residence



*Not an indication of percentage vaccinated, numbers will exceed 100 due to multiple doses required per person of the population

Aboriginal and Torres Strait Islander peoples

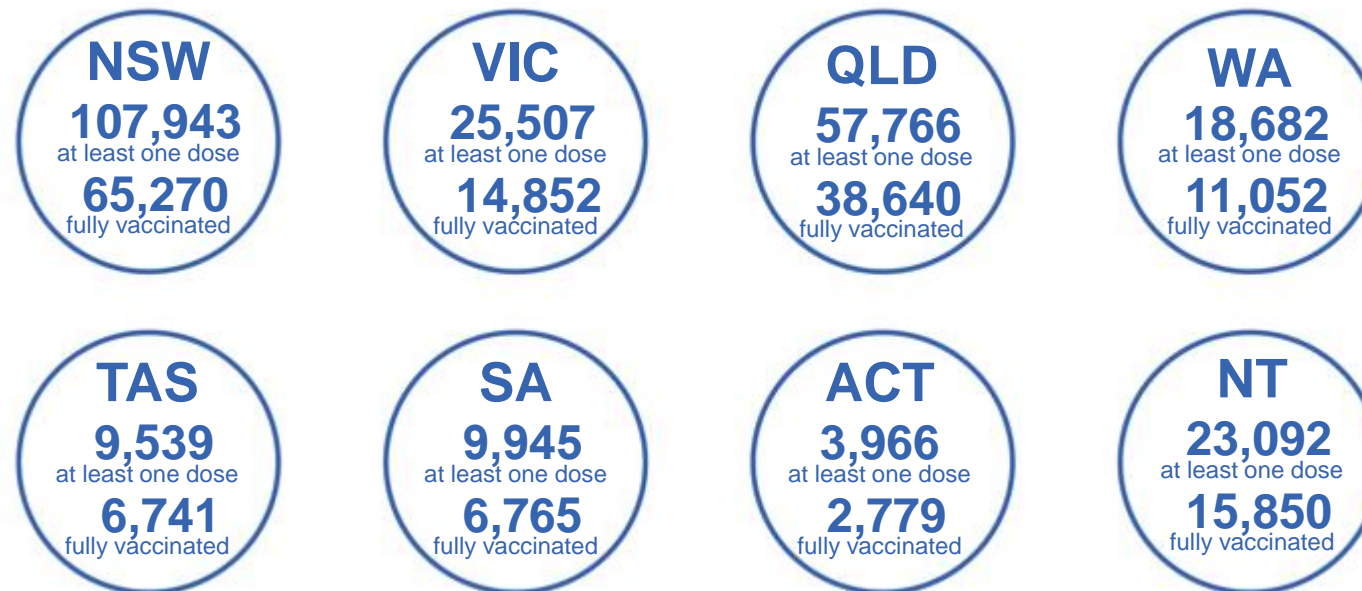
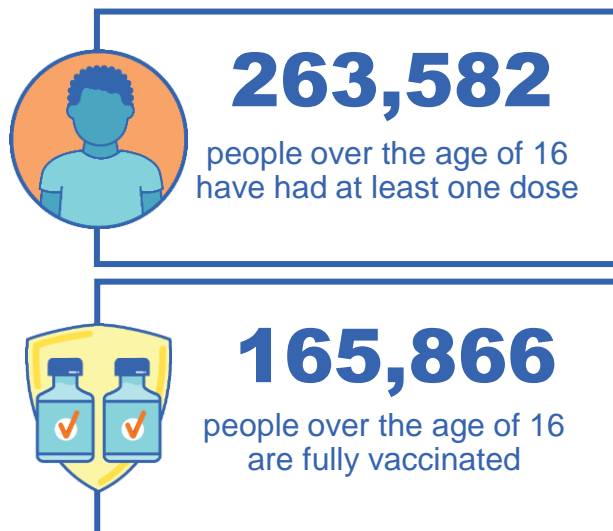
Number of people vaccinated

Data as at:
26 Sept 2021
Updated weekly

Australia's COVID-19
Vaccine Roadmap

167 Aboriginal community controlled health services (ACCHS)

0#	48	26	39	12	3	21	18
ACT	NSW	NT	QLD	SA	TAS	VIC	WA



7,142 people with at least one dose
3,917 people fully vaccinated

residing in other territories or with missing residential information
Source: Australian Immunisation Register

*Identifying as Aboriginal and Torres Strait Islander is optional and the estimated population may be under reported.

**Includes all Aboriginal and Torres Strait Islander peoples who have received a vaccination, not limited to those administered in an ACCHS setting

***Updated weekly.

#ACCHS in the ACT are currently operating as a Commonwealth Vaccine Clinics so not included to avoid double counting

Commonwealth primary care

Data as at:
02 Oct 2021

Australia's COVID-19
Vaccine Roadmap



Primary care vaccine administration sites

5,506

GPs

137

CVCs

167

ACCHS

3,233

Pharmacies



15,552,163 total vaccine doses
administered primary care settings as at 02 October

+ 110,407 recorded in the last 24 hours

Primary care vaccinations by provider type

	Doses administered	Daily increase	7 day increase
General Practice* includes other Commonwealth	14,667,985	91,719	993,096
Pharmacy	884,178	18,688	198,832

NSW
6,314,417
(+43,133 daily increase)

VIC
3,719,752
(+35,608 daily increase)

QLD
2,708,550
(+12,805 daily increase)

WA
1,208,845
(+9,290 daily increase)

TAS
262,856
(+1,733 daily increase)

SA
894,755
(+4,194 daily increase)

ACT
264,184
(+2,724 daily increase)

NT
93,045
(+257 daily increase)

85,759 doses administered to persons
residing in other territories or with
missing residential information

*General practice includes Commonwealth Vaccination Clinics, Aboriginal Community Health Centres, Royal Flying Doctor Service and other Commonwealth vaccination facilities

Source: Australian Immunisation Register

Data as at:
02 Oct 2021

Commonwealth aged care and disability doses administered



1,008,803 (+ 5,533 last 24 hours)

Total vaccine doses administered in aged care and disability facilities as at 02 October

Number of doses administered as part of the Commonwealth aged and disability care rollout

NSW
473,055
(+1,738 daily increase)

VIC
183,317
(+819 daily increase)

QLD
173,824
(+2,641 daily increase)

WA
63,467
(+91 daily increase)

TAS
16,713
(+5 daily increase)

SA
57,114
(+103 daily increase)

ACT
11,896
(+86 daily increase)

NT
5,681
(+6 daily increase)

*Sourced from the Australian Immunisation Register. Includes all persons vaccinated at participating residential aged care, disability and related industry settings.

**State level breakdown indicates the residential location and may not align to the state in which the vaccination occurred.

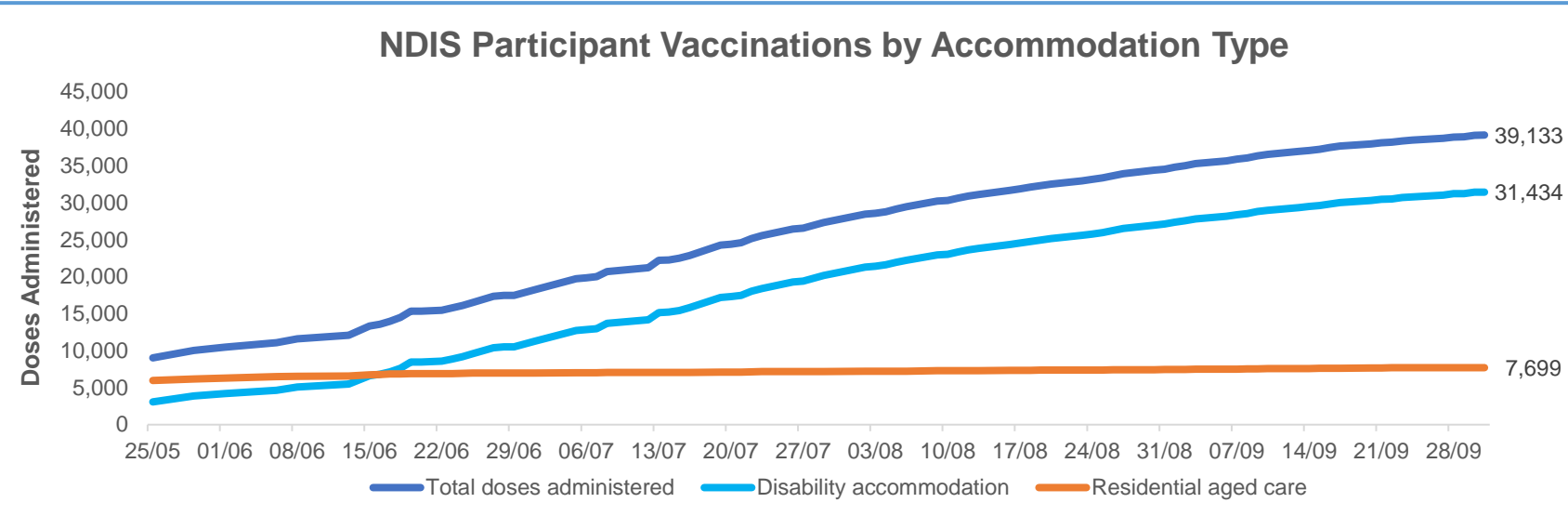
23,736

doses administered to persons residing in other territories or with missing residential information

Data as at:
01 Oct 2021*

Vaccination rate of people with disability and the disability workforce

Phase 1a – People with disability living in shared accommodation



	Total people with at least one dose	People fully vaccinated	Total number of individuals in cohort	Total doses administered	% People with at least one dose	% People fully vaccinated
NDIS participants living in shared accommodation **	20,707	18,426	27,293	39,133	75.9%	67.5%
NDIS screened workers ***	149,908	121,773	200,500	271,681	74.8%	60.7%

* Updates are available Monday to Friday on participants, and bi-weekly for workers, numbers may be up to four days old.

** Shared accommodation means two or more people with disability living in shared residential accommodation and NDIS participants living in Residential Aged Care accommodation as per the eligibility criteria of Phase 1a.

*** Total number of workers within the NDIS Commission Worker Screening database who have ever been successfully screened and linked to an NDIS registered provider or participant.

Source: Linkage between National Disability Insurance Agency data, NDIS Quality and Safeguards Commission data and the Australian Immunisation Register.



Residential aged care vaccination rollout

Residential aged care facilities status

100%

Commonwealth facilities visited (2,573 planned sites)

161,284

People fully vaccinated

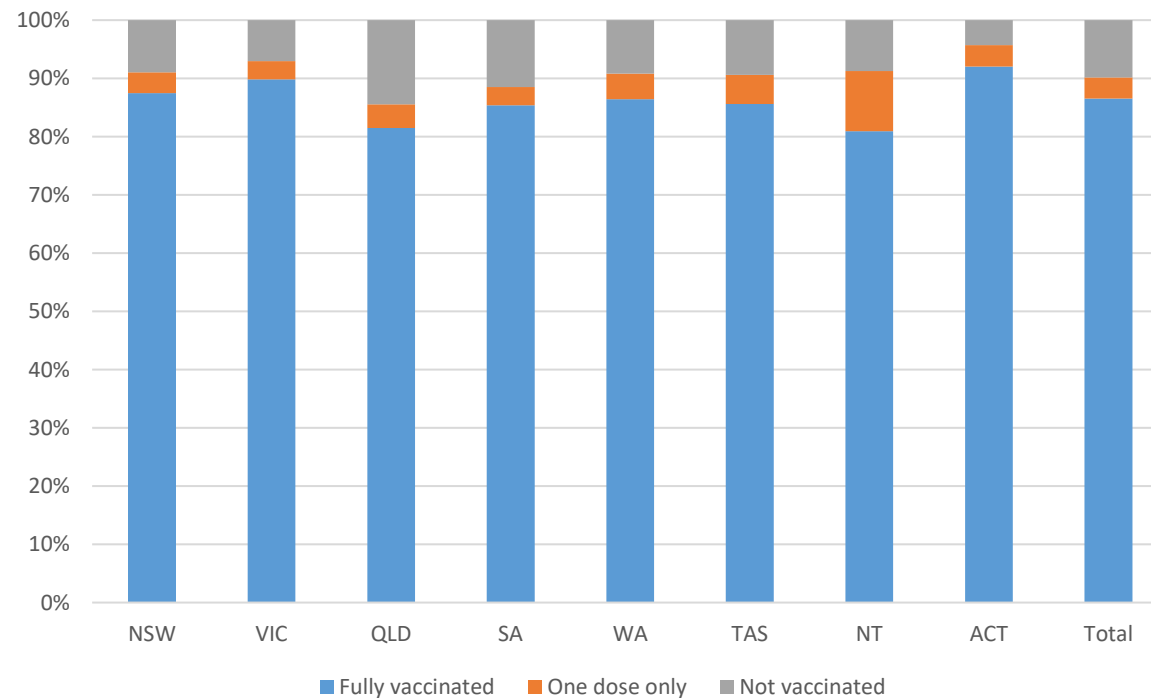
90.2%

Participation rate

Australia's COVID-19 Vaccine Roadmap

Data as at:
02 October 2021

Aged care resident vaccinations



Aged care worker vaccinations

Jurisdictions	Total workers with at least one dose	Workers fully vaccinated	% Workers with at least one dose	% Workers fully vaccinated
NSW	78,477	68,261	99.5%	86.5%
VIC	70,844	60,708	99.0%	84.8%
QLD	47,525	38,305	99.2%	80.0%
SA	26,759	22,917	99.5%	85.2%
WA	23,204	17,737	99.6%	76.1%
TAS	7,483	6,385	99.9%	85.2%
NT	801	769	99.3%	95.3%
ACT	2,930	2,637	99.9%	89.9%
Total	258,023	217,719	99.3%	83.8%

Source: My Aged Care Portal staff vaccination progress

**Resident vaccination information is reported manually by service providers

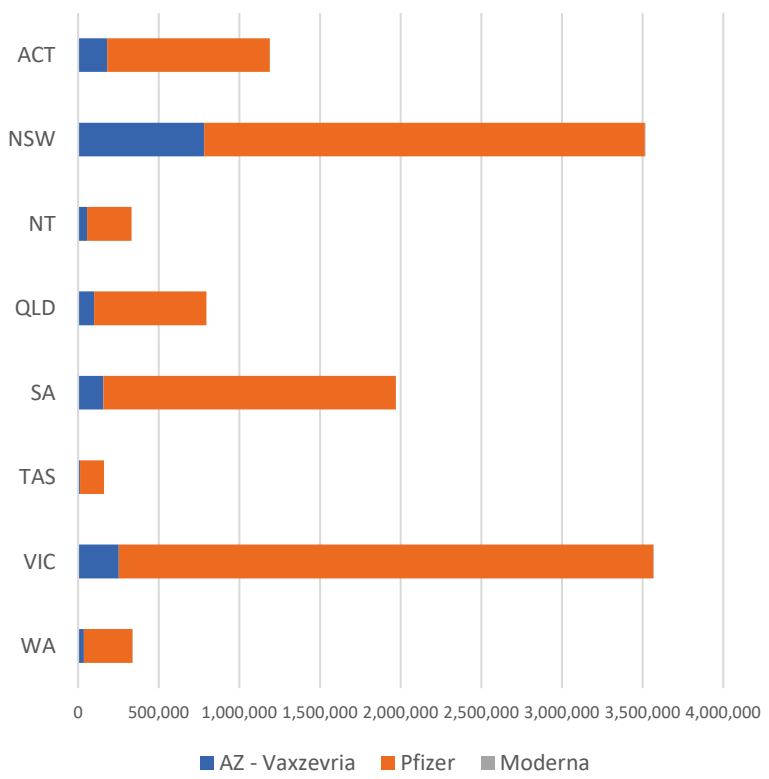
*Status updates are provided by facilities at least once per week. Reporting is updated Monday to Friday to encompass different facility updates being made on different days.

Data is sourced directly from Aged Care Service Providers and is not drawn or closely aligned with data from AIR due to inconsistencies and potential lags in uploading of records.

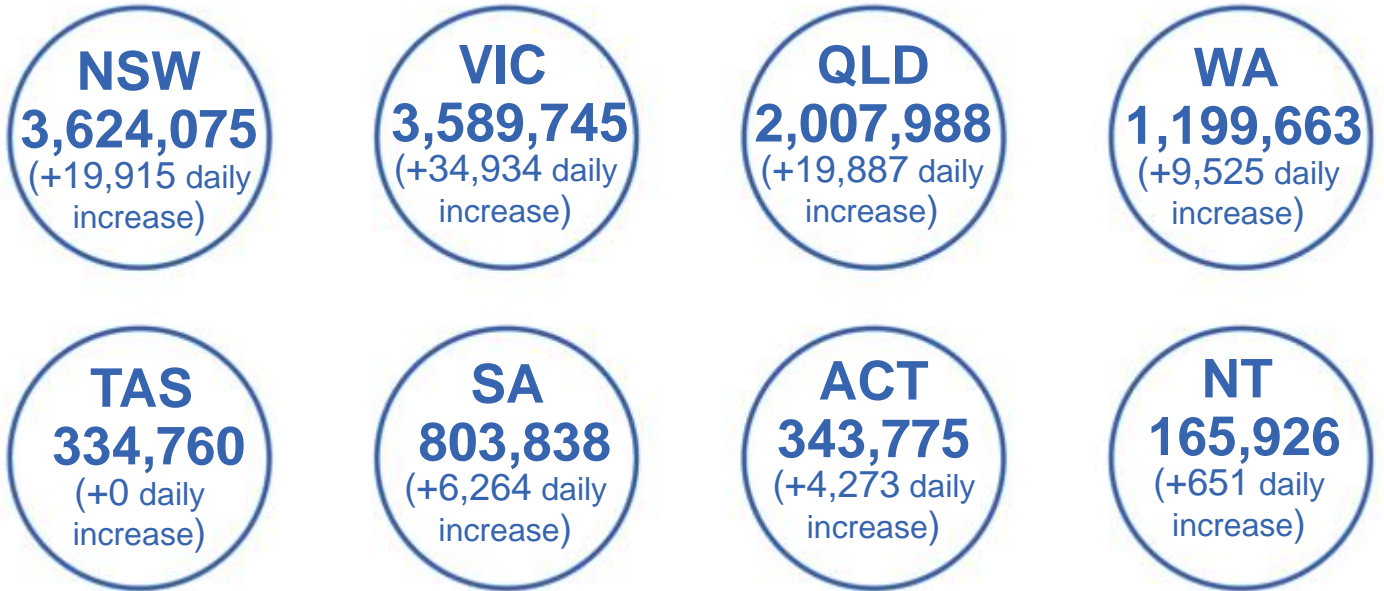
Data as at:
02 Oct 2021

Jurisdiction administered

Total vaccine doses administered in State and Territory clinics as at 02 October



12,069,770 total vaccine doses administered
in State and Territory clinics as at 02 October
+ **95,449** recorded in the last 24 hours
+ **735,451** recorded in the last 7 days

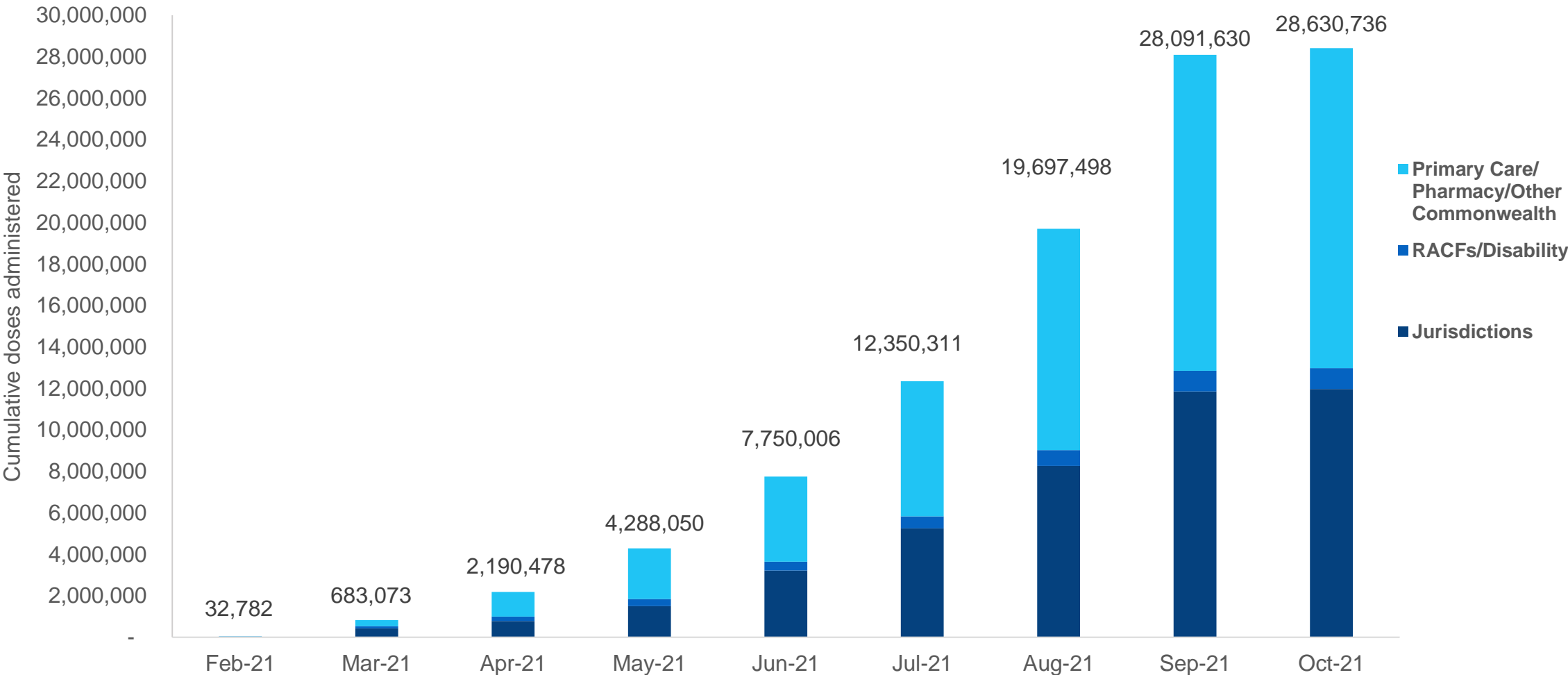


*Sourced from the Australian Immunisation Register and self-reported data. Numbers are calculated as difference in daily cumulative reported numbers to allow for historical corrections in all self-reported data sources.

Source: Australian Immunisation Register

Cumulative doses administered by channel

Data as at:
02 Oct 2021



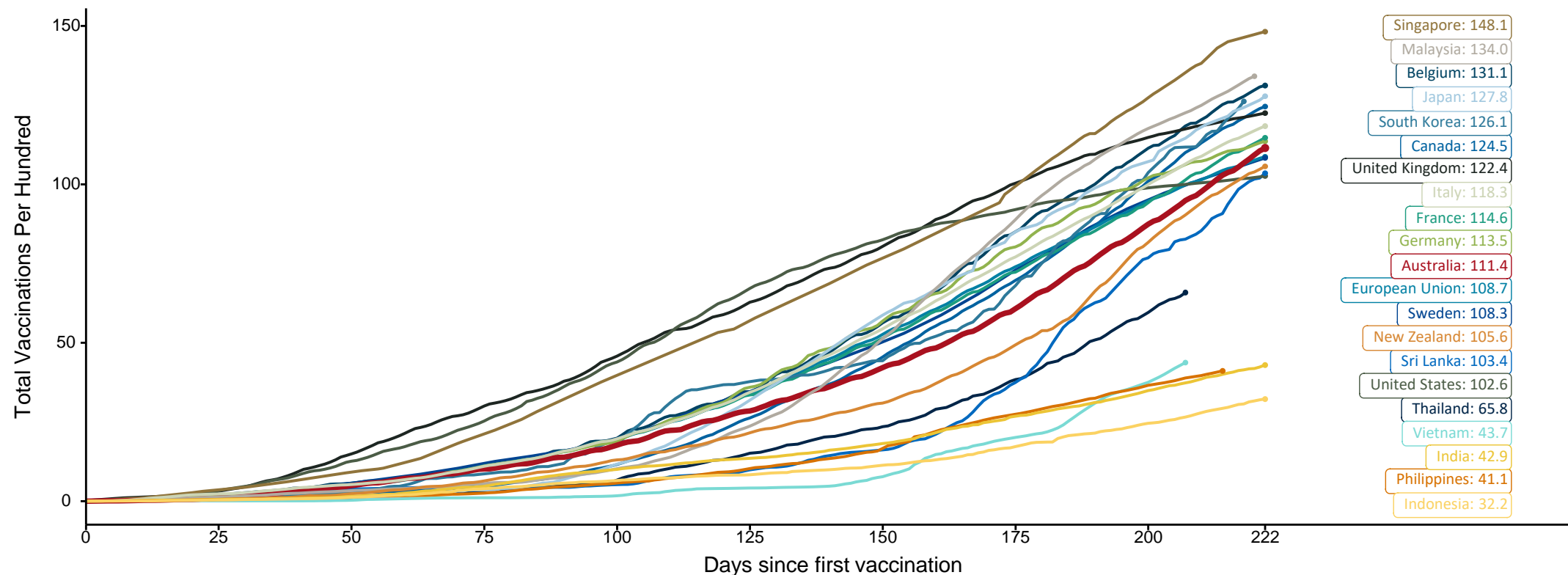
Source: Australian Immunisation Register

Doses at equivalent stages of rollout (Day 222)

Data as at:
02 Oct 2021

The x-axis is truncated at the length of Australia's vaccination program. Countries with intermittent reporting have had their doses per 100 imputed to Australia's current stage of rollout. Israel excluded as it is beyond scale of the graph

Cumulative doses administered (02 Oct): **28,630,736**

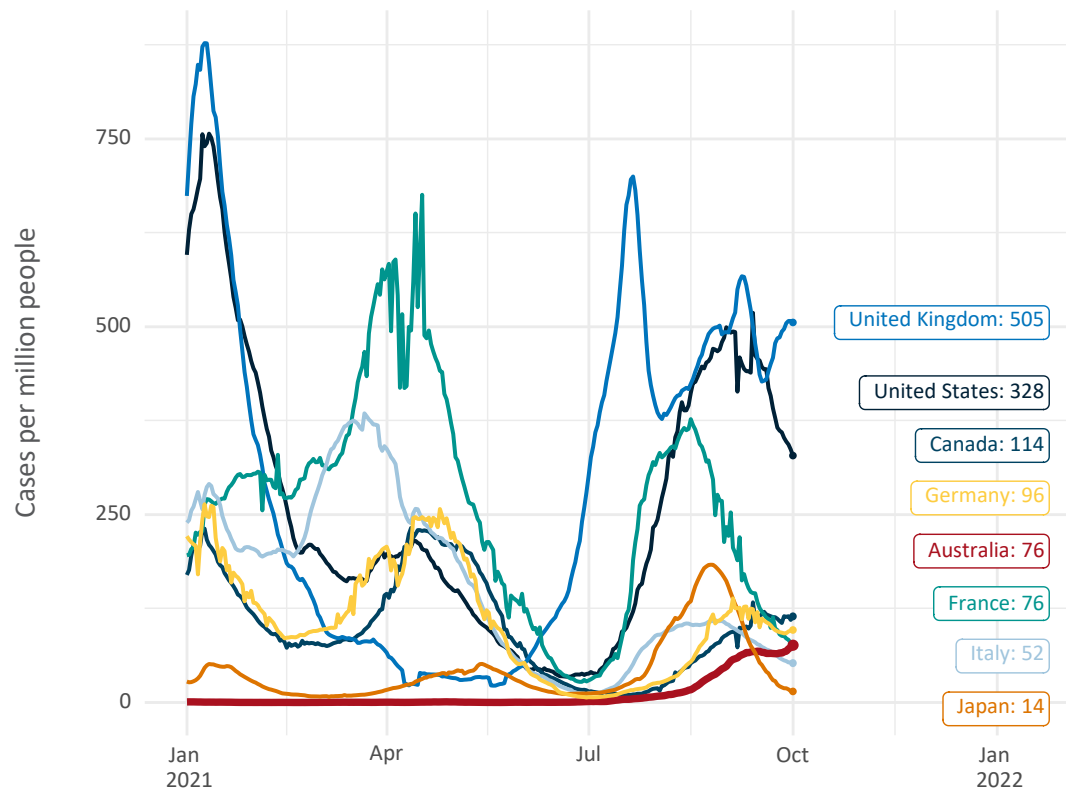


Note: From 15 September 2021, data for Australia includes all doses administered to people 12 and over. Prior to 15 September, data was for 16 and over
Source: Department of Health (Australia), Our World in Data (international)
Latest data: 02 October

International data – COVID-19

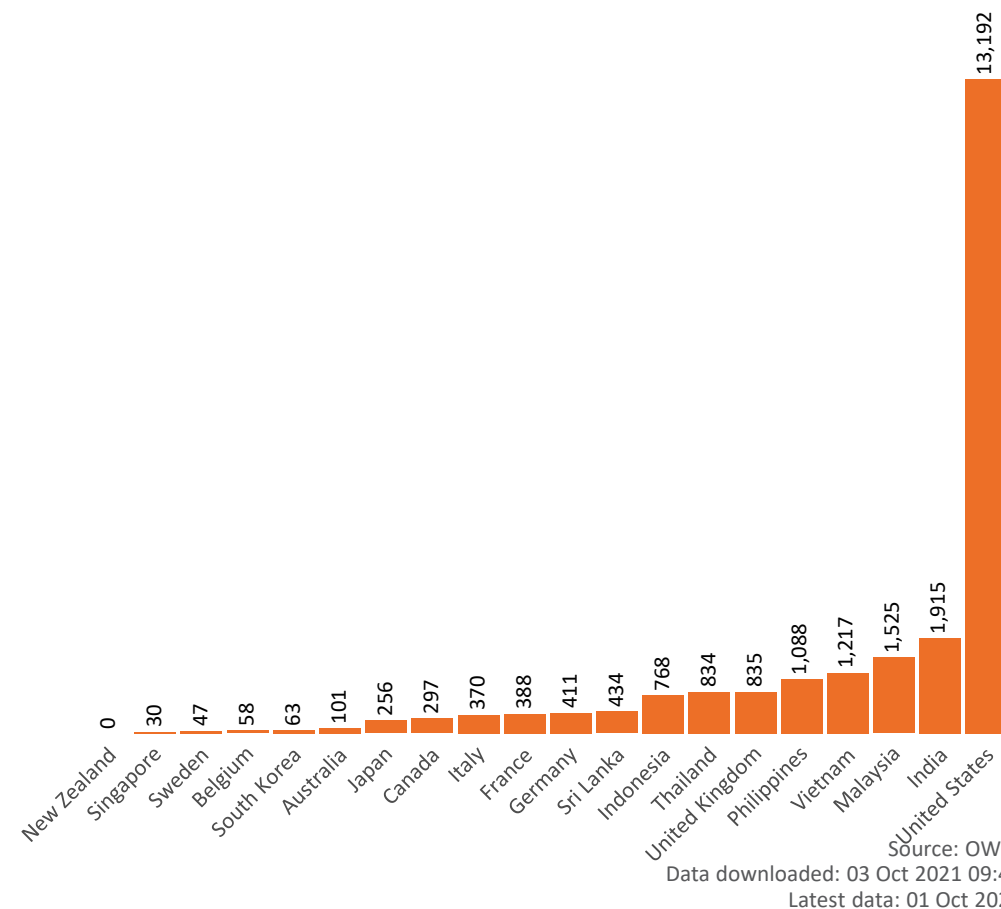
Data as at:
02 Oct 2021

New daily cases per million in 2021, Australia and G7 countries
Smoothed - 7 day average



Source: OWID
Data downloaded: 03 Oct 2021 09:41
Latest data: 01 Oct 2021

COVID-19 deaths in past 7 days - Australia and select countries



Pandemic Response Payments

Australia's COVID-19
Vaccine Roadmap

Data as at midnight:
2 Oct 2021



COVID Disaster Payment:	3.81 million claims received - 2.08 million individuals paid a total of \$9.65 billion.
\$200 Income Support Payment:	239,000 claims received - 169,000 individuals paid a total of \$196.51 million.
Pandemic Leave Disaster Payment:	79,000 claims received - 68,000 individuals paid a total of \$108.08 million.



COVID Disaster Payment

assisting during a lockdown
event in a Commonwealth
hotspot.

Income Support Payment \$200

for income support
recipients who lost at
least 8 hours of work.

Pandemic Leave Disaster Payment

for those who have
to self-isolate,
quarantine or care.

For more information visit:
servicesaustralia.gov.au

COVID-19 DISASTER PAYMENTS

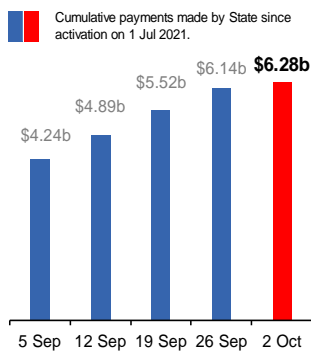
New South Wales

Active lockdown since 24 Jun

**1.06m people have
received at least one
COVID Disaster Payment.**

**\$6.28b paid out as at
2 Oct 2021.**

**\$613m paid in initial and
reoccurring payments in the
week ending 26 Sep 2021.**



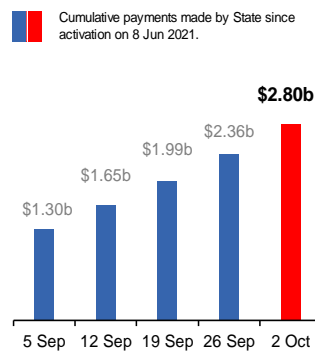
Victoria

Active lockdown (#6) since 6 Aug

**668,000 people have
received at least one
COVID Disaster Payment.**

**\$2.80b paid out as at
2 Oct 2021.**

**\$378m paid in initial and
reoccurring payments in the
week ending 26 Sep 2021.**



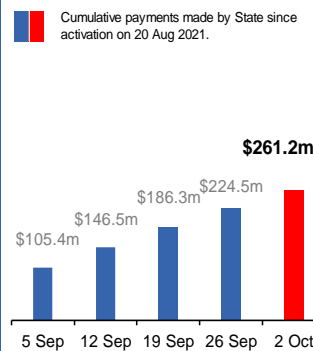
Australian Capital Territory

Active lockdown since 12 Aug

**64,000 people have
received at least one
COVID Disaster Payment.**

**\$261.2m paid out as at
2 Oct 2021.**

**\$38m paid in initial and
reoccurring payments in the
week ending 26 Sep 2021.**



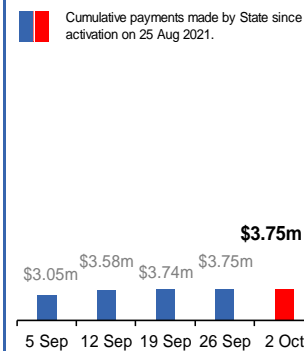
Northern Territory

Lockdown from 18 – 20 Jul
Claiming period ended 13 Sep

**5,787 people have
received at least one
COVID Disaster Payment.**

**\$3.75m paid out as at
2 Oct 2021.**

**\$7,000 paid in initial
payments in the week
ending 26 Sep 2021.**



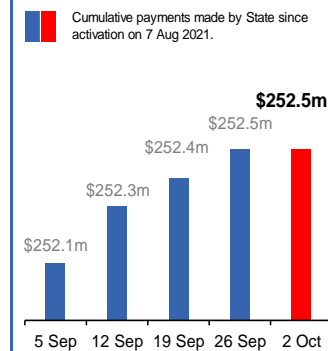
Queensland

Lockdown from 31 Jul – 11 Aug
Claiming period ended 28 Aug

**196,000 people have
received at least one
COVID Disaster Payment.**

**\$252.5m paid out as at
2 Oct 2021.**

**\$40,000 paid in initial and
reoccurring payments in the
week ending 26 Sep 2021.**



South Australia

Lockdown from 21 – 27 Jul
Claiming period ended 17 Aug

**86,000 people have
received at least one
COVID Disaster Payment.**

**\$48.2m paid out as at
2 Oct 2021.**

**\$2,000 paid in initial
payments in the week
ending 26 Sep 2021.**

