



**Australian Government**  
**Operation COVID Shield**

# COVID-19 Vaccine Rollout

28 October 2021

Data as at:  
27 Oct 2021

## Total vaccine doses



**35,049,655** total vaccine doses administered nationally as at 27 October  
**+221,089** recorded in the last 24 hours



**18,066,911**

people have had at least one dose

**87.6%**

of people over the age of 16 have had at least one dose



**15,561,757**

people are fully vaccinated

**75.5%**

of people over the age of 16 are fully vaccinated

**NSW**  
**12,256,807**  
(+48,231 daily increase)

**VIC**  
**9,657,191**  
(+70,773 daily increase)

**QLD**  
**6,022,564**  
(+48,316 daily increase)

**WA**  
**3,049,472**  
(+23,369 daily increase)

**TAS**  
**730,391**  
(+4,250 daily increase)

**SA**  
**2,142,698**  
(+18,783 daily increase)

**ACT**  
**875,786**  
(+5,194 daily increase)

**NT**  
**314,746**  
(+2,173 daily increase)

\*Administration state breakdown indicates state in which a vaccine was administered  
\*\*Overall dose count includes instances of more than two doses per person in a small number of cases.

Data as at:  
27 Oct 2021

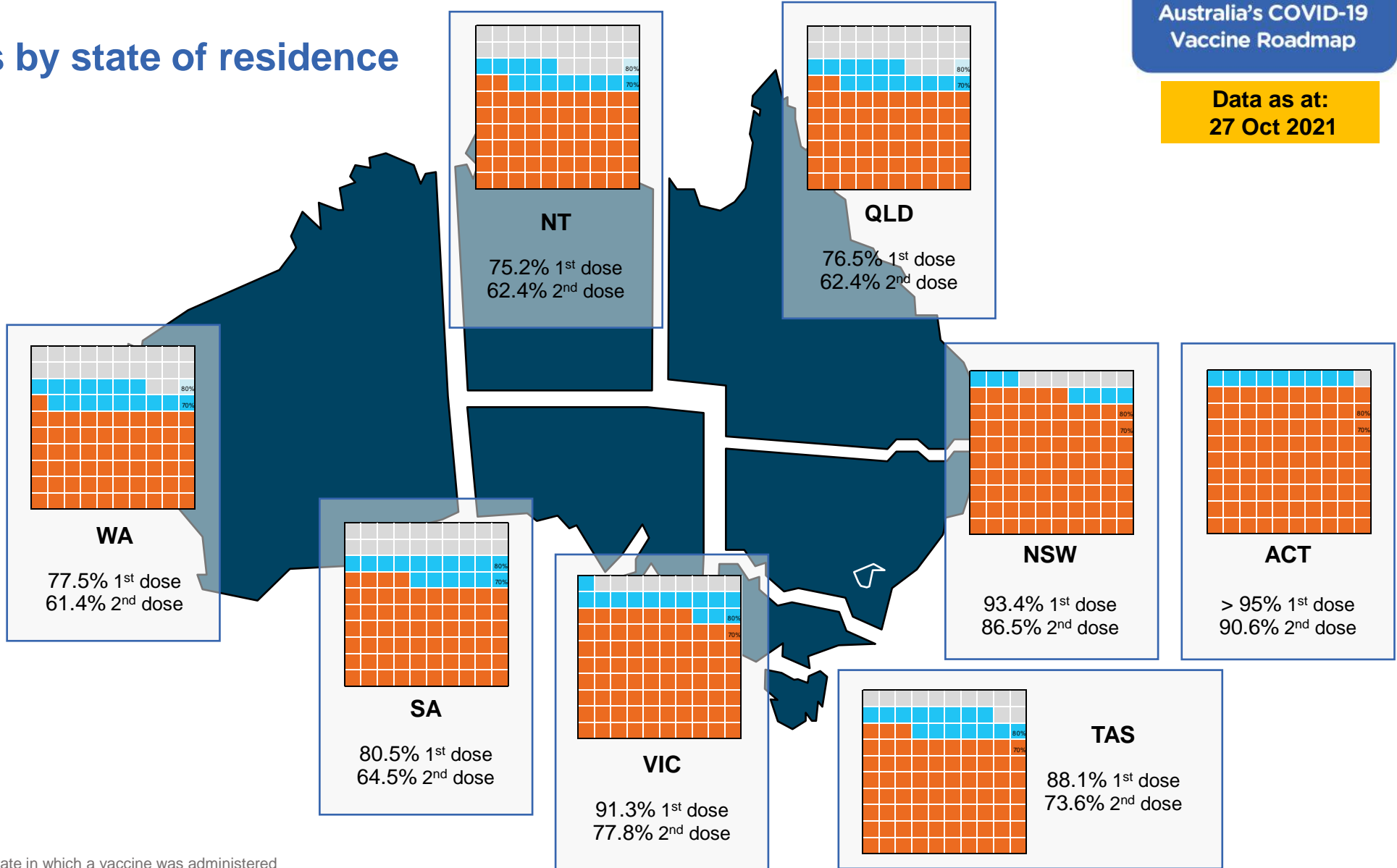
# Vaccinations by state of residence

## First doses

Age	Today	4 weeks ago	8 weeks ago
16+	87.6%	78.6%	61.6%
50+	94.8%	89.7%	80.9%
70+	>95%	>95%	89.7%

## Fully vaccinated

Age	Today	4 weeks ago	8 weeks ago
16+	75.5%	55.0%	37.2%
50+	84.7%	72.1%	55.3%
70+	89.2%	79.7%	66.4%



\*Residential state may differ from the state in which a vaccine was administered

## Commonwealth and Jurisdiction vaccine doses administered

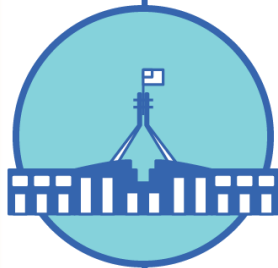
Data as at:  
27 Oct 2021



**35,049,655** total vaccine doses administered nationally as at 27 October  
**+ 221,089** recorded in the last 24 hours



**14,509,421** doses administered by state and territory facilities  
**+ 66,520** recorded in the last 24 hours



**20,540,234** doses administered by commonwealth facilities  
**+ 154,569** recorded in the last 24 hours  
**19,493,162** total vaccine doses administered in primary care settings  
**1,047,072** total vaccine doses administered in aged care and disability settings

NSW	Jurisdictions	Commonwealth
Cumulative	4,078,095	8,178,712
Daily increase	9,674	38,557

VIC	Jurisdictions	Commonwealth
Cumulative	4,450,799	5,206,392
Daily increase	20,920	49,853

QLD	Jurisdictions	Commonwealth
Cumulative	2,483,184	3,539,380
Daily increase	14,109	34,207

WA	Jurisdictions	Commonwealth
Cumulative	1,460,140	1,589,332
Daily increase	8,017	15,352

TAS	Jurisdictions	Commonwealth
Cumulative	404,314	326,077
Daily increase	1,873	2,377

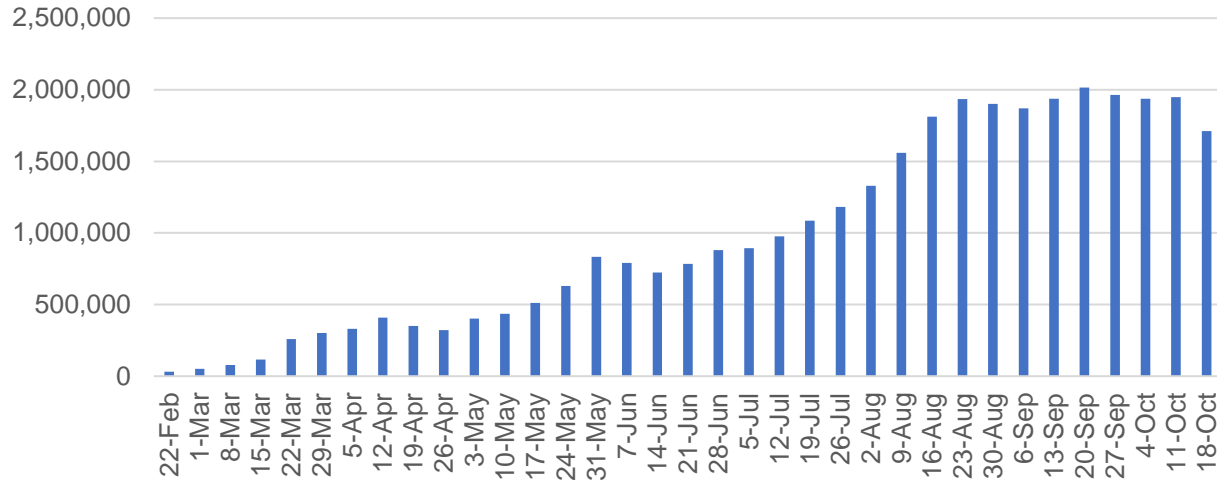
SA	Jurisdictions	Commonwealth
Cumulative	1,006,191	1,136,507
Daily increase	8,019	10,764

ACT	Jurisdictions	Commonwealth
Cumulative	437,480	438,306
Daily increase	2,927	2,267

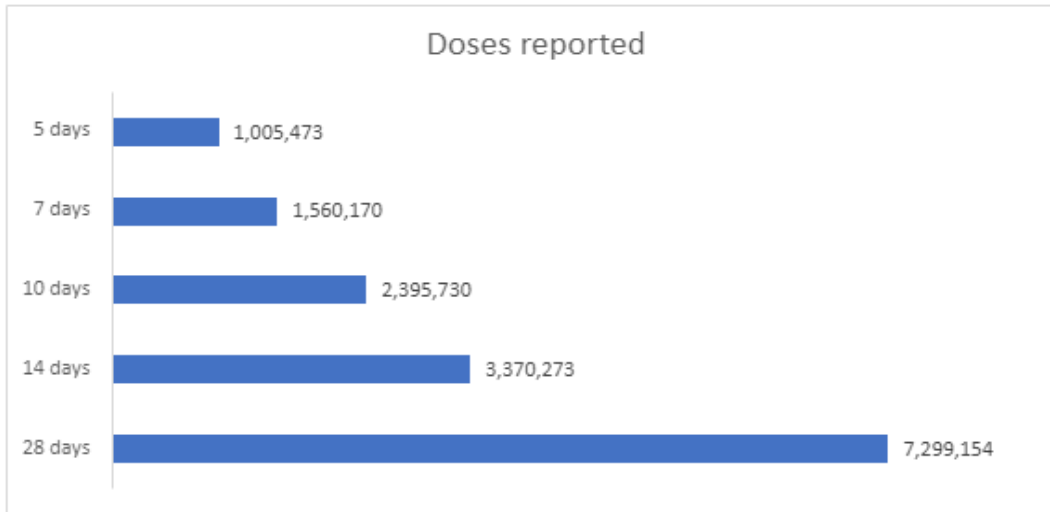
NT	Jurisdictions	Commonwealth
Cumulative	189,218	125,528
Daily increase	981	1,192

# Vaccine milestone charts

Jabs in arms by week



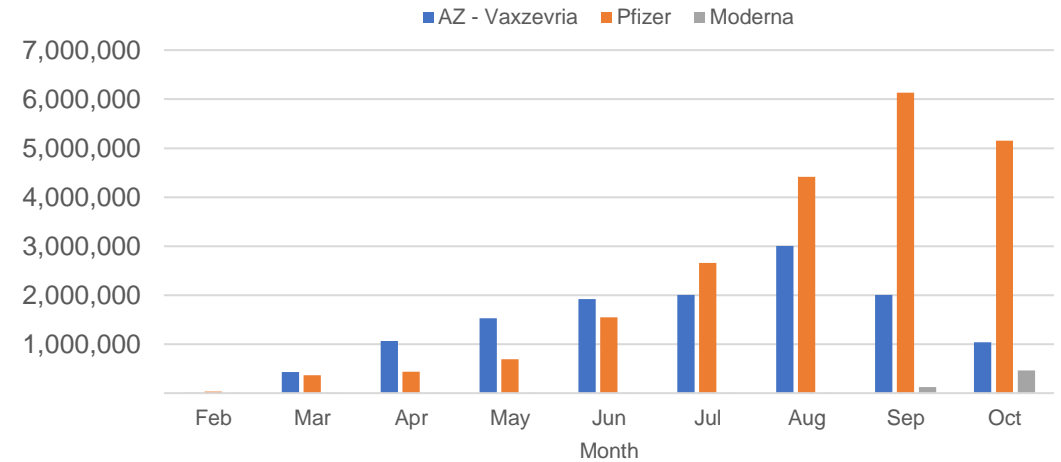
Doses reported



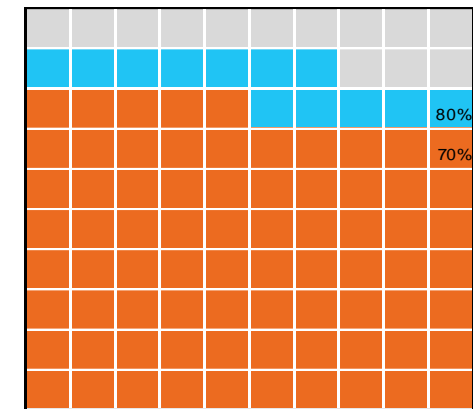
\*Sourced from the Australian Immunisation Register.

Data as at:  
27 Oct 2021

Doses by administration month and vaccine type



Eligible population percentage coverage



1st dose: 87.6% 2nd dose: 75.5%

\*Each square represents 1% of the national population. Squares are filled as milestones are achieved.

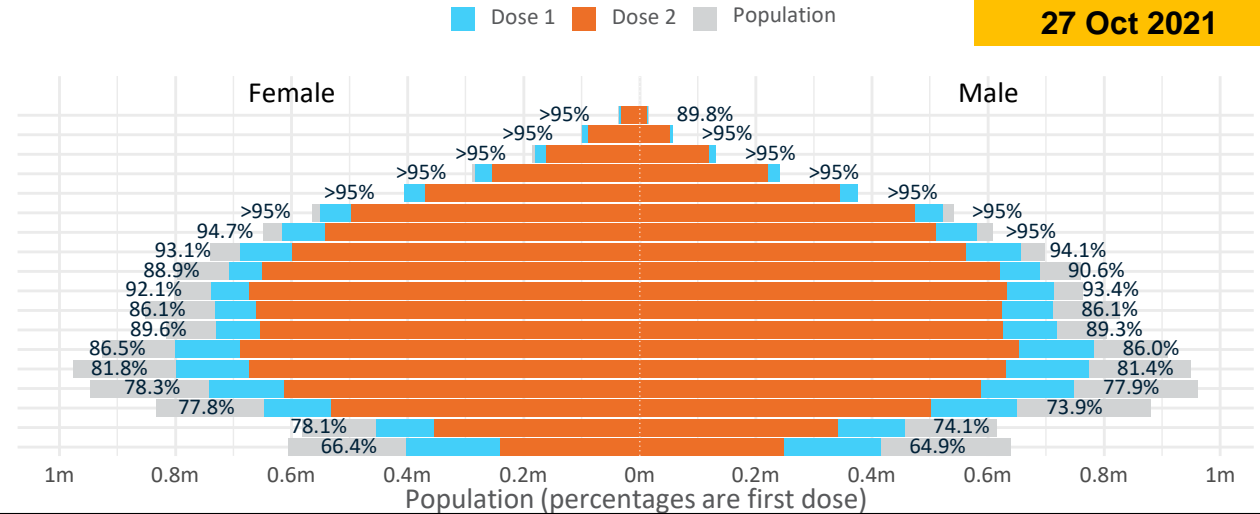
# Doses by age and sex

First and second doses by age and sex

Data as at:  
27 Oct 2021

	16+	50+	70+	12-15
Dose 1	87.62% (18,066,911 doses / 20,619,959 people)	94.77% (8,291,967 doses / 8,749,703 people)	>95% (2,899,520 doses / 2,934,706 people)	65.66% (816,822 doses / 1,243,990 people)
Dose 2	75.47% (15,561,757 doses / 20,619,959 people)	84.66% (7,407,820 doses / 8,749,703 people)	89.25% (2,619,114 doses / 2,934,706 people)	39.26% (488,358 doses / 1,243,990 people)

Age	Dose 1	Dose 2
95+	49,987 (94.5%)	43,482 (82.2%)
90-94	156,296 (>95%)	138,704 (87.6%)
85-89	311,861 (>95%)	278,751 (88.2%)
80-84	523,778 (>95%)	474,312 (89.8%)
75-79	783,392 (>95%)	713,463 (92.2%)
70-74	1,074,206 (>95%)	970,402 (87.8%)
65-69	1,197,003 (>95%)	1,052,050 (83.6%)
60-64	1,346,056 (93.7%)	1,161,236 (80.8%)
55-59	1,397,174 (89.8%)	1,270,020 (81.6%)
50-54	1,452,214 (92.8%)	1,305,400 (83.4%)
45-49	1,444,531 (86.2%)	1,286,347 (76.7%)
40-44	1,451,762 (89.6%)	1,280,297 (79.0%)
35-39	1,587,408 (86.5%)	1,343,113 (73.2%)
30-34	1,577,573 (82.0%)	1,306,542 (67.9%)
25-29	1,499,238 (78.6%)	1,207,058 (63.3%)
20-24	1,304,303 (76.2%)	1,035,499 (60.5%)
16-19	910,129 (76.1%)	695,081 (58.1%)
12-15	816,822 (65.7%)	488,358 (39.3%)

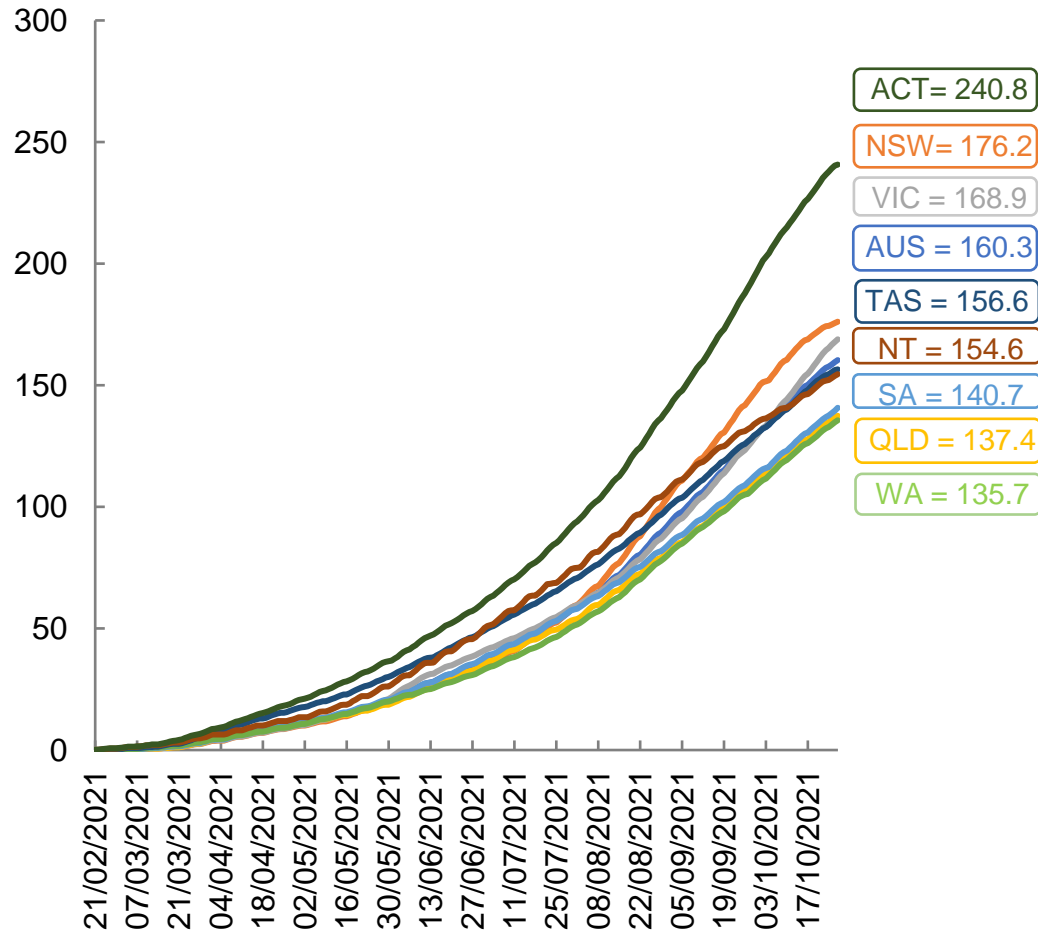


	AUS	ACT	NSW	NT	QLD	SA	TAS	VIC	WA
16 and over - dose 1	18,066,911	340,964	6,130,446	143,266	3,148,210	1,159,614	387,960	4,935,802	1,638,798
16 and over - dose 2	15,561,757	311,781	5,676,972	118,991	2,566,056	928,911	323,829	4,207,992	1,297,581
16 and over - population	20,619,959*	344,037	6,565,651	190,571	4,112,707	1,440,400	440,172	5,407,574	2,114,978
16 and over % with dose 1	87.62%	>95%	93.37%	75.18%	76.55%	80.51%	88.14%	91.28%	77.49%
16 and over % with dose 2	75.47%	90.62%	86.46%	62.44%	62.39%	64.49%	73.57%	77.82%	61.35%
50 and over - dose 1	8,291,967	132,472	2,742,128	51,603	1,572,953	611,148	205,686	2,132,015	794,483
50 and over - dose 2	7,407,820	124,304	2,574,282	45,150	1,358,536	517,198	180,253	1,900,216	670,217
50 and over - population	8,749,703	127,802	2,807,793	62,280	1,758,855	674,384	220,036	2,211,211	885,370
50 and over % with dose 1	94.77%	>95%	>95%	82.86%	89.43%	90.62%	93.48%	>95%	89.73%
50 and over % with dose 2	84.66%	>95%	91.68%	72.50%	77.24%	76.69%	81.92%	85.94%	75.70%
70 and over - dose 1	2,899,520	43,035	965,777	10,834	552,154	231,834	75,929	732,014	267,939
70 and over - dose 2	2,619,114	40,332	906,981	9,555	490,889	199,217	66,993	658,304	230,594
70 and over - population	2,934,706	39,946	962,606	12,343	577,767	240,514	77,155	743,519	280,281
70 and over % with dose 1	>95%	>95%	>95%	87.77%	>95%	>95%	>95%	>95%	>95%
70 and over % with dose 2	89.25%	>95%	94.22%	77.41%	84.96%	82.83%	86.83%	88.54%	82.27%
12 to 15 - dose 1	816,822	19,270	307,354	6,803	128,436	37,082	14,577	245,761	52,554
12 to 15 - dose 2	488,358	14,251	221,175	3,765	66,711	14,501	4,831	140,908	19,931
12 to 15 - population	1,243,990	19,693	390,330	13,060	270,146	82,747	26,308	308,611	132,869
12 to 15 % with dose 1	65.66%	>95%	78.74%	52.09%	47.54%	44.81%	55.41%	79.63%	39.55%
12 to 15 % with dose 2	39.26%	72.37%	56.66%	28.83%	24.69%	17.52%	18.36%	45.66%	15.00%

\*National population will not equal sum of listed jurisdictions due to a small number of people counted in national population residing in some 'other' territories. Sum of state doses will not add to national total as some records are unable to be geocoded to a State or Territory. Doses sourced from Australian Immunisation Register, population from ABS ERP June 2020

# Vaccinations by location

Cumulative total doses administered vs state populations\*



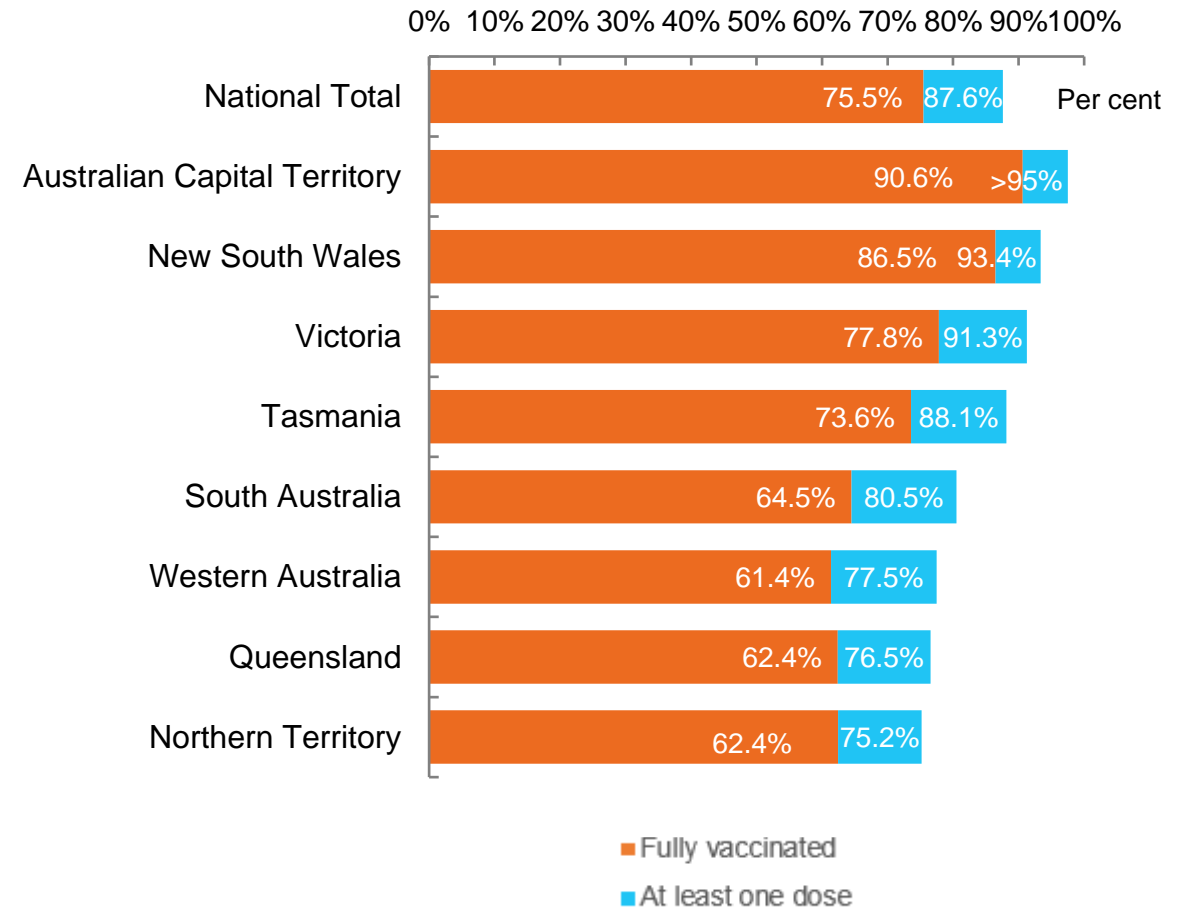
\*Not an indication of percentage vaccinated, numbers will exceed 100 due to multiple doses required per person of the population

\*\*Correction applied to data reported on 27-Oct-2021 for state population

Data as at:  
27 Oct 2021

Australia's COVID-19  
Vaccine Roadmap

First and Second Doses by state of residence





# Aboriginal and Torres Strait Islander peoples

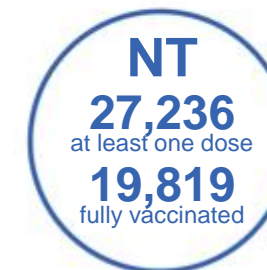
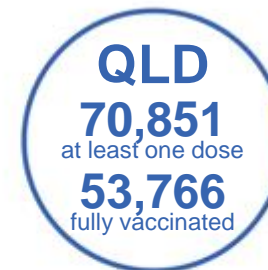
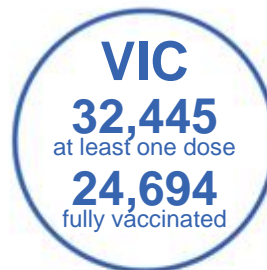
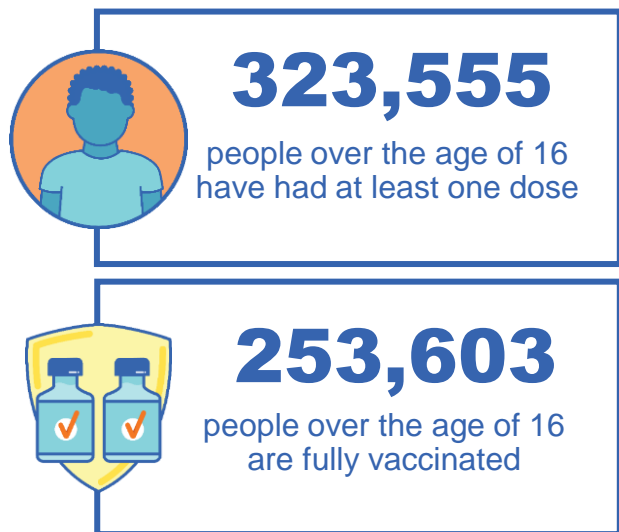
## Number of people vaccinated

Data as at:  
24 Oct 2021  
Updated weekly

Australia's COVID-19  
Vaccine Roadmap

### 169 Aboriginal community controlled health services (ACCHS)

0#	50	26	39	12	3	21	18
<b>ACT</b>	<b>NSW</b>	<b>NT</b>	<b>QLD</b>	<b>SA</b>	<b>TAS</b>	<b>VIC</b>	<b>WA</b>



**8,623** people with at least one dose  
**5,626** people fully vaccinated

residing in other territories or with missing residential information

Source: Australian Immunisation Register

\*Identifying as Aboriginal and Torres Strait Islander is optional and the estimated population may be under reported.

\*\*Includes all Aboriginal and Torres Strait Islander peoples who have received a vaccination, not limited to those administered in an ACCHS setting

\*\*\*Updated weekly.

#ACCHS in the ACT are currently operating as a Commonwealth Vaccine Clinics so not included to avoid double counting



Data as at:  
27 Oct 2021

## Commonwealth primary care



### Primary care vaccine administration sites

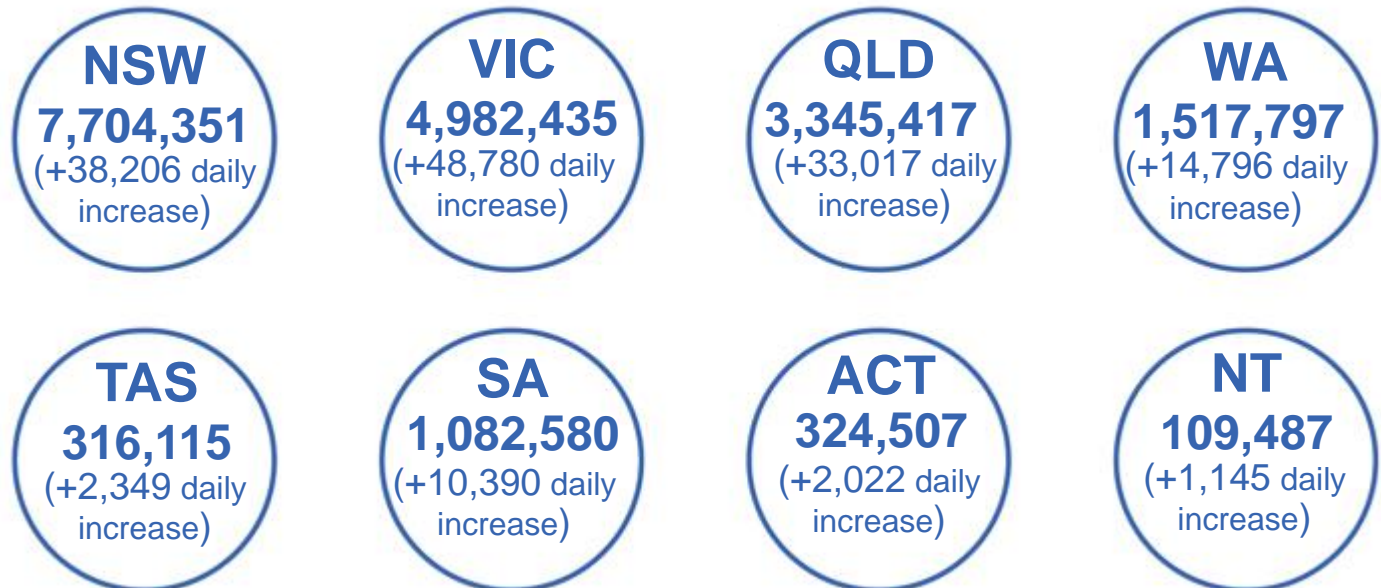
<b>5,592</b>	<b>137</b>	<b>169</b>	<b>3,408</b>
GPs	CVCs	ACCHS	Pharmacies



**19,493,162** total vaccine doses administered primary care settings as at 27 October  
+ **152,971** recorded in the last 24 hours

### Primary care vaccinations by provider type

	Doses administered	Daily increase	7 day increase
<b>General Practice*</b> includes other Commonwealth	17,927,284	115,822	768,981
<b>Pharmacy</b>	1,565,878	37,149	205,341



**110,473** doses administered to persons residing in other territories or with missing residential information

\*General practice includes Commonwealth Vaccination Clinics, Aboriginal Community Health Centres, Royal Flying Doctor Service and other Commonwealth vaccination facilities

Source: Australian Immunisation Register

# Commonwealth aged care and disability doses administered

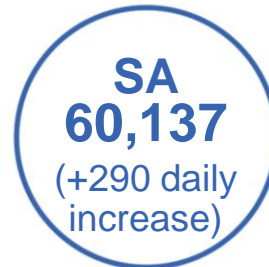
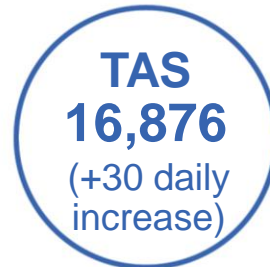
Data as at:  
27 Oct 2021



**1,047,072** (+ 1,598 last 24 hours)

Total vaccine doses administered in aged care and disability facilities as at 27 October

Number of doses administered as part of the Commonwealth aged and disability care rollout



\*Sourced from the Australian Immunisation Register. Includes all persons vaccinated at participating residential aged care, disability and related industry settings.  
\*\*State level breakdown indicates the residential location and may not align to the state in which the vaccination occurred.

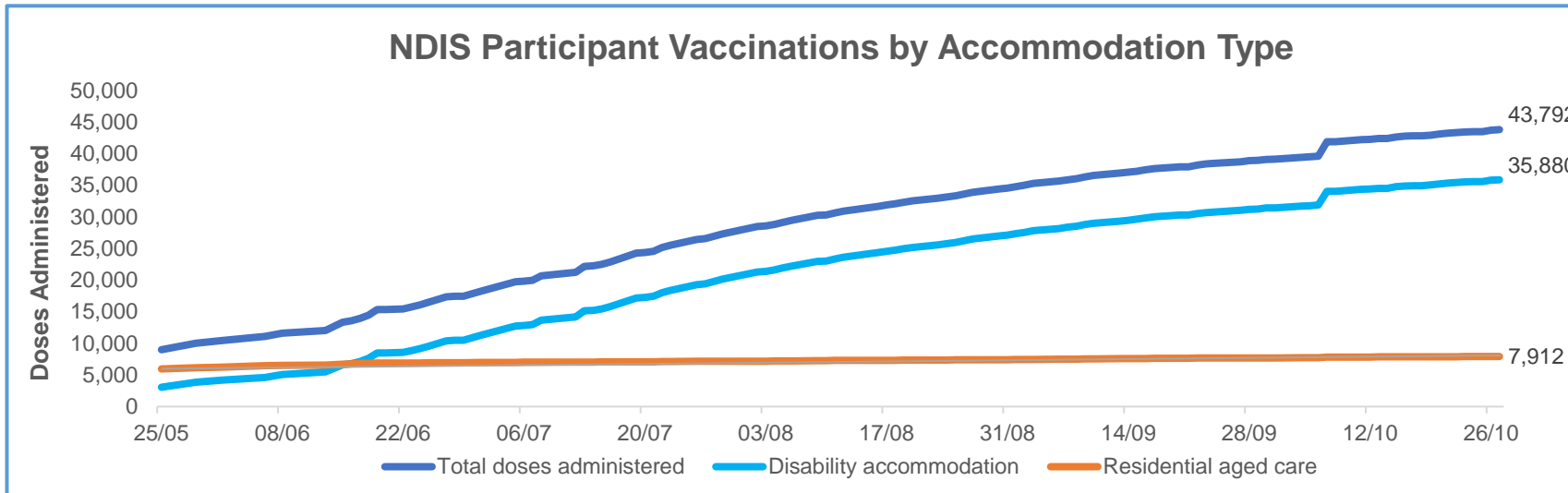
**23,969**

doses administered to persons residing in other territories or with missing residential information

Data as at:  
27 Oct 2021\*

# Vaccination rate of people with disability and the disability workforce

## Phase 1a – People with disability living in shared accommodation



	Total people with at least one dose	People fully vaccinated	Total number of individuals in cohort	Total doses administered	% People with at least one dose	% People fully vaccinated
NDIS participants living in shared accommodation **	22,703	21,089	27,603	43,792	82.2%	76.4%
NDIS screened workers ***	183,669	165,073	223,262	348,742	82.3%	73.9%



\* Updates are available Monday to Friday on participants, and bi-weekly for workers, numbers may be up to four days old.

\*\* Shared accommodation means two or more people with disability living in shared residential accommodation and NDIS participants living in Residential Aged Care accommodation as per the eligibility criteria of Phase 1a.

\*\*\* Total number of workers within the NDIS Commission Worker Screening database who have ever been successfully screened and linked to an NDIS registered provider or participant.

Source: Linkage between National Disability Insurance Agency data, NDIS Quality and Safeguards Commission data and the Australian Immunisation Register.

## Residential aged care vaccination rollout

**Residential aged care facilities status**

**100%**

Commonwealth facilities visited (2,573 planned sites)

**161,936**

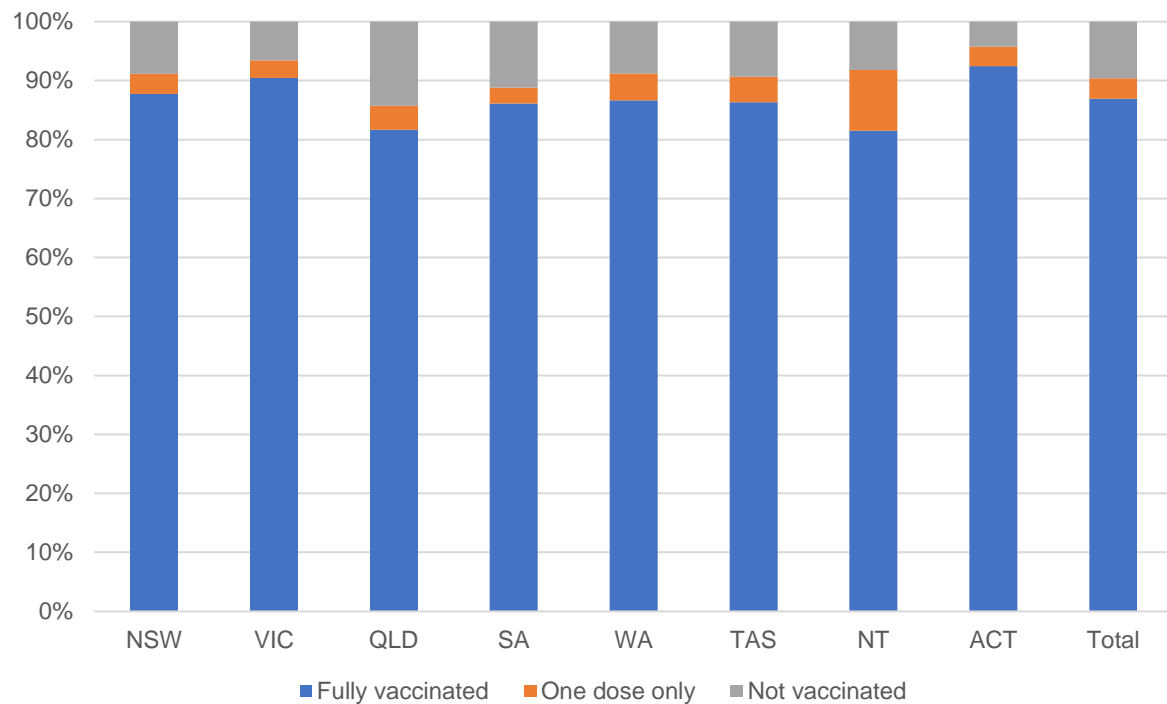
People fully vaccinated

**168,494**

People with at least one dose

**Data as at: 27 Oct 2021**

### Aged care resident vaccinations



### Aged care worker vaccinations

Jurisdictions	Total workers with at least one dose	Workers fully vaccinated	% Workers with at least one dose	% Workers fully vaccinated
NSW	78,489	76,649	99.9%	97.5%
VIC	71,436	66,995	99.8%	93.6%
QLD	48,648	44,860	99.8%	92.1%
SA	27,303	25,541	100.0%	93.5%
WA	23,583	20,772	99.9%	88.0%
TAS	7,655	6,929	100.0%	90.5%
NT	830	807	99.5%	96.8%
ACT	2,969	2,874	99.9%	96.7%
<b>Total</b>	<b>260,913</b>	<b>245,427</b>	<b>99.9%</b>	<b>93.9%</b>

Source: My Aged Care Portal staff vaccination progress

\*\*Resident vaccination information is reported manually by service providers

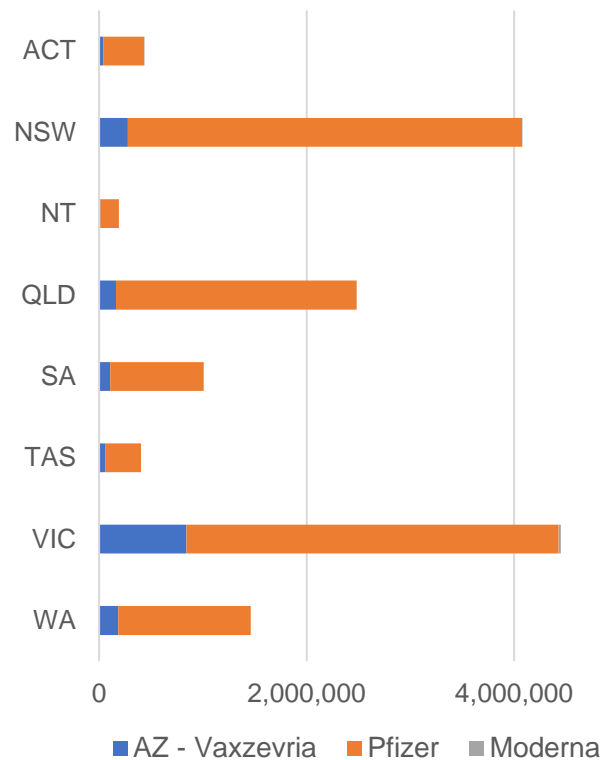
\*Status updates are provided by facilities at least once per week. Reporting is updated Monday to Friday to encompass different facility updates being made on different days.

Data is sourced directly from Aged Care Service Providers and is not drawn or closely aligned with data from AIR due to inconsistencies and potential lags in uploading of records.

Data as at:  
27 Oct 2021

# Jurisdiction administered

Total vaccine doses administered in State and Territory clinics as at 27 October



**14,509,421** total vaccine doses administered in State and Territory clinics as at 27 October  
 + **66,520** recorded in the last 24 hours  
 + **568,420** recorded in the last 7 days

**NSW**  
**4,078,095**  
 (+9,674 daily increase)

**VIC**  
**4,450,799**  
 (+20,920 daily increase)

**QLD**  
**2,483,184**  
 (+14,109 daily increase)

**WA**  
**1,460,140**  
 (+8,017 daily increase)

**TAS**  
**404,314**  
 (+1,873 daily increase)

**SA**  
**1,006,191**  
 (+8,019 daily increase)

**ACT**  
**437,480**  
 (+2,927 daily increase)

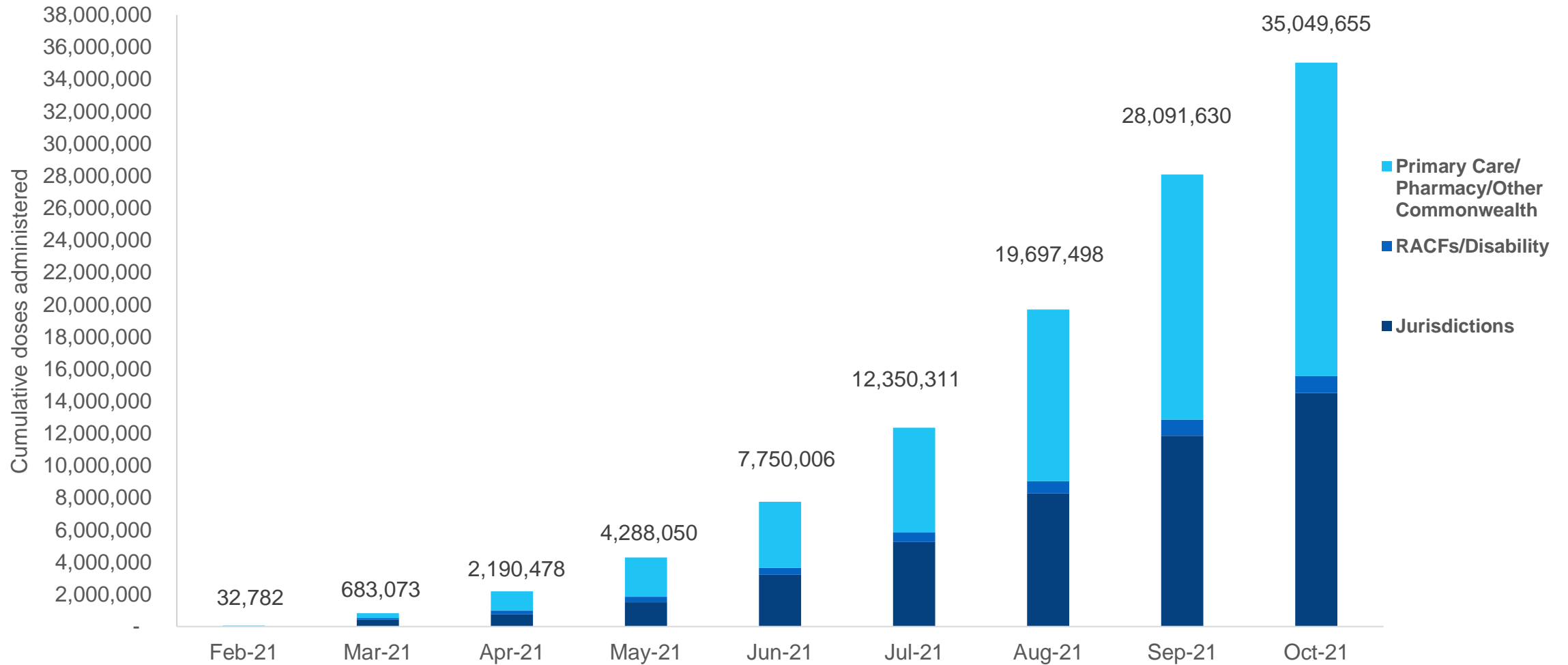
**NT**  
**189,218**  
 (+981 daily increase)

\*Sourced from the Australian Immunisation Register and self-reported data. Numbers are calculated as difference in daily cumulative reported numbers to allow for historical corrections in all self-reported data sources.

Source: Australian Immunisation Register

# Cumulative doses administered by channel

Data as at:  
27 Oct 2021



Source: Australian Immunisation Register

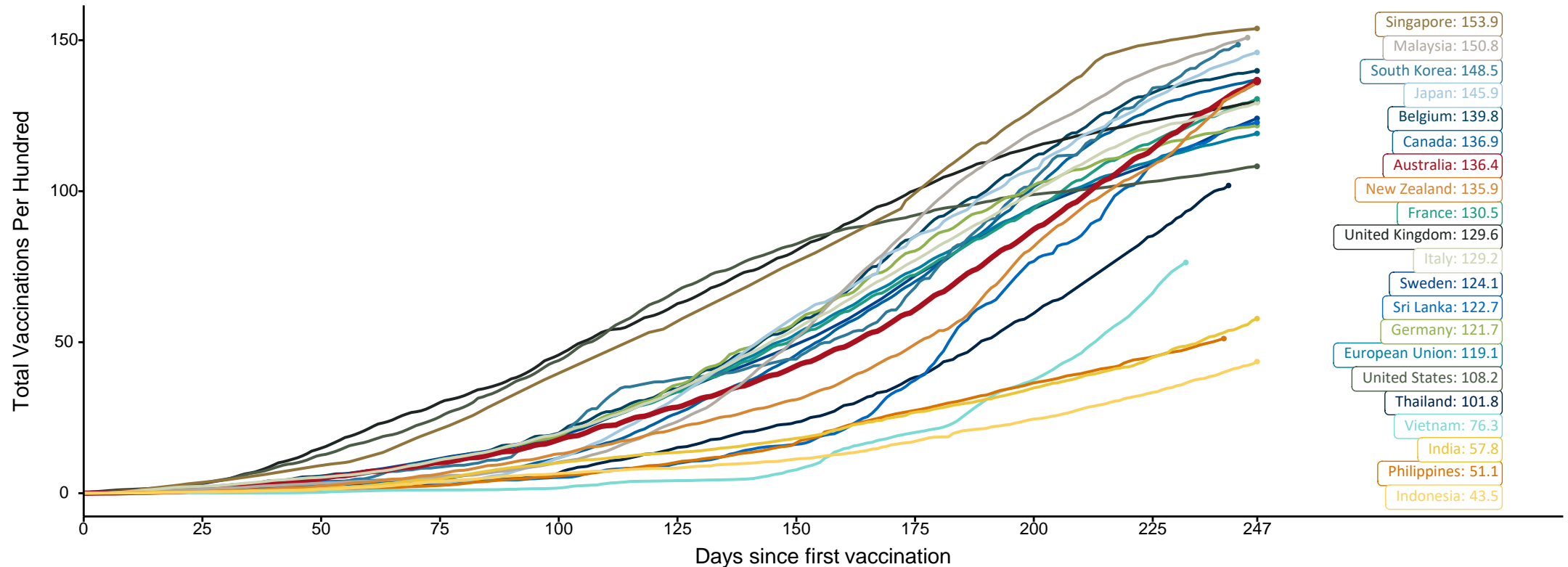


# Doses at equivalent stages of rollout (Day 247)

Data as at:  
27 Oct 2021

The x-axis is truncated at the length of Australia's vaccination program. Countries with intermittent reporting have had their doses per 100 imputed to Australia's current stage of rollout. Israel excluded as it is beyond scale of the graph

Cumulative doses administered (27 Oct): **35,049,655**



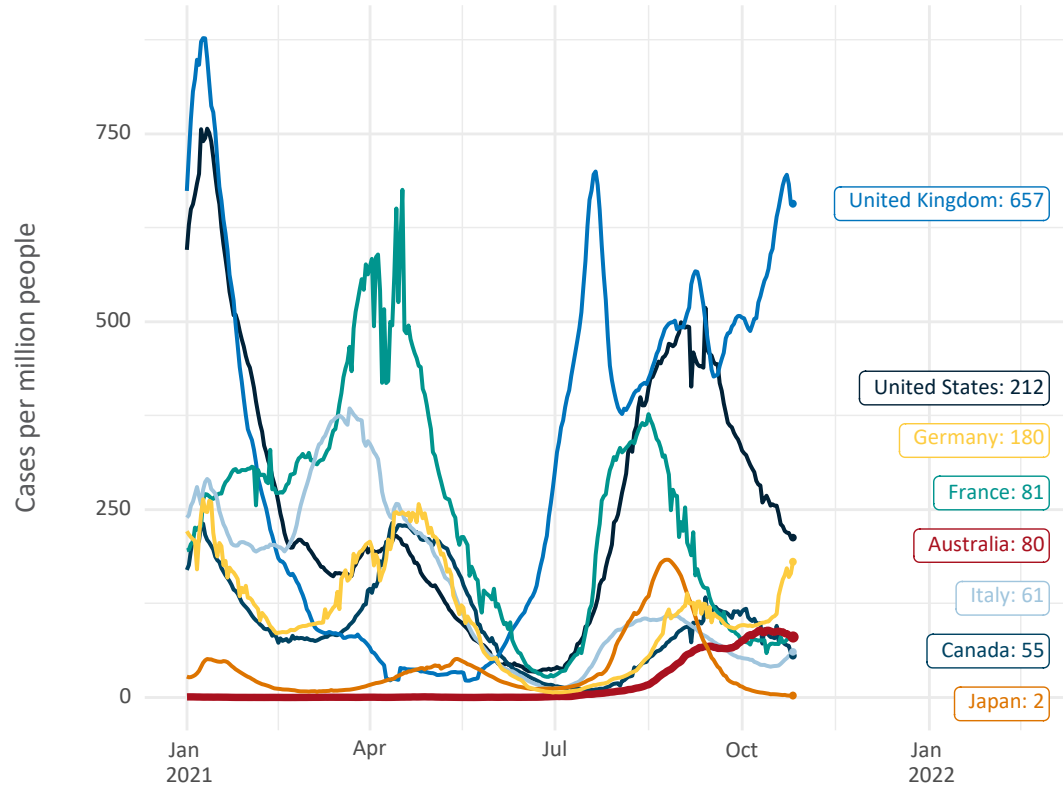
Note: From 15 September 2021, data for Australia includes all doses administered to people 12 and over. Prior to 15 September, data was for 16 and over  
 Source: Department of Health (Australia), Our World in Data (international)  
 Latest data: 27 October



Data as at:  
27 Oct 2021

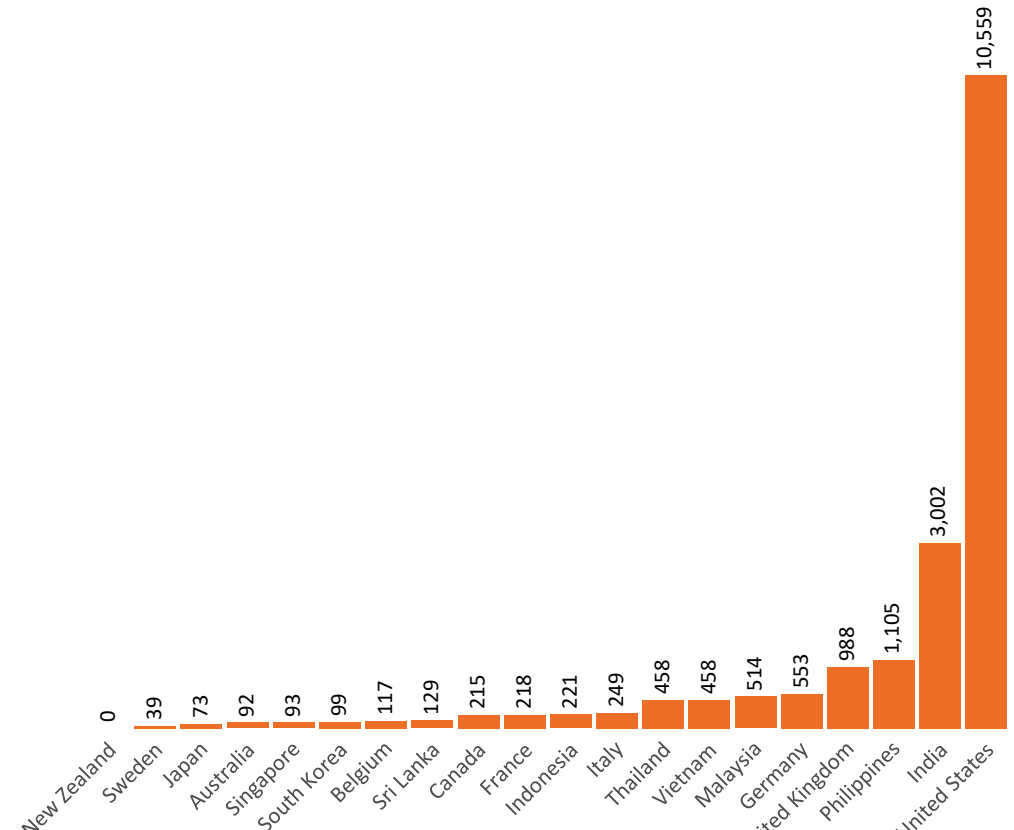
# International data – COVID-19

New daily cases per million in 2021, Australia and G7 countries  
Smoothed - 7 day average



Source: OWID  
Data downloaded: 28 Oct 2021 07:47  
Latest data: 26 Oct 2021


COVID-19 deaths in past 7 days - Australia and select countries



Source: OWID  
Data downloaded: 28 Oct 2021 07:47  
Latest data: 26 Oct 2021

Data as at midnight:  
27 Oct 2021

# Pandemic Response Payments (Current)



**2.35 million**  
People have received at least one COVID Disaster Payment (including ISP200)

**\$12.51 billion**  
Paid Out as at 27 Oct 2021

**5.08 million**  
Claims granted across three different payments




**94%**  
of Claims Received Digitally



<b>COVID Disaster Payment:</b>	4.93 million claims received - 2.17 million individuals paid a total of \$12.09 billion.
<b>\$200 Income Support Payment:</b>	305,000 claims received - 180,000 individuals paid a total of \$260.64 million.
<b>Pandemic Leave Disaster Payment:</b>	111,000 claims received - 96,000 individuals paid a total of \$155.19 million.

## CURRENT COVID-19 DISASTER PAYMENTS



**THREE PAYMENTS AVAILABLE**

**COVID Disaster Payment**  
assisting during a lockdown event in a Commonwealth hotspot.

**Income Support Payment \$200**  
for income support recipients who lost at least 8 hours of work.

**Pandemic Leave Disaster Payment**  
for those who have to self-isolate, quarantine or care.

For more information visit:  
[servicesaustralia.gov.au](https://servicesaustralia.gov.au)

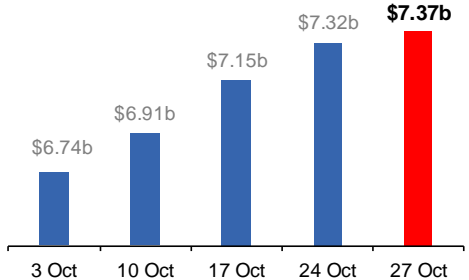
**New South Wales**  
Active lockdown since 24 Jun  
Partial reopening from 10 Oct

**1.08m people have received at least one COVID Disaster Payment.**

**\$7.37b paid out as at 27 Oct 2021.**

**\$170m paid in initial and reoccurring payments in the week ending 24 Oct 2021.**

Cumulative payments made by State since activation on 1 Jul 2021.



Date	Cumulative Payments (\$b)
3 Oct	\$6.74b
10 Oct	\$6.91b
17 Oct	\$7.15b
24 Oct	\$7.32b
27 Oct	\$7.37b

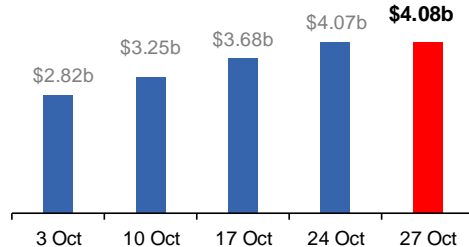
**Victoria**  
Active lockdown (#6) since 6 Aug

**734,000 people have received at least one COVID Disaster Payment.**

**\$4.08b paid out as at 27 Oct 2021.**

**\$397m paid in initial and reoccurring payments in the week ending 24 Oct 2021.**

Cumulative payments made by State since activation on 8 Jun 2021.



Date	Cumulative Payments (\$b)
3 Oct	\$2.82b
10 Oct	\$3.25b
17 Oct	\$3.68b
24 Oct	\$4.07b
27 Oct	\$4.08b

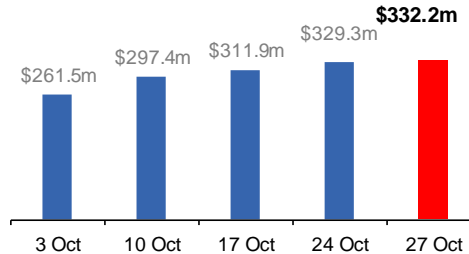
**Australian Capital Territory**  
Active lockdown since 12 Aug  
Partial reopening from 14 Oct

**65,000 people have received at least one COVID Disaster Payment.**

**\$332.2m paid out as at 27 Oct 2021.**

**\$17m paid in initial and reoccurring payments in the week ending 24 Oct 2021.**

Cumulative payments made by State since activation on 20 Aug 2021.



Date	Cumulative Payments (\$m)
3 Oct	\$261.5m
10 Oct	\$297.4m
17 Oct	\$311.9m
24 Oct	\$329.3m
27 Oct	\$332.2m

**Tasmania**  
Lockdown from 15 Oct to 18 Oct  
Claiming period ends 12 Nov

**2,600 people have received at least one COVID Disaster Payment.**

**\$1.4m paid out as at 27 Oct 2021.**

**\$390,000 paid in initial payments in the week ending 24 Oct 2021.**

Cumulative payments made by State since activation on 22 Oct 2021.



Date	Cumulative Payments (\$)
24 Oct	\$390,000
27 Oct	\$1.4m

Data as at midnight:  
27 Oct 2021

# Pandemic Response Payments (Closed Events)

## CLOSED COVID-19 DISASTER PAYMENTS


### Northern Territory

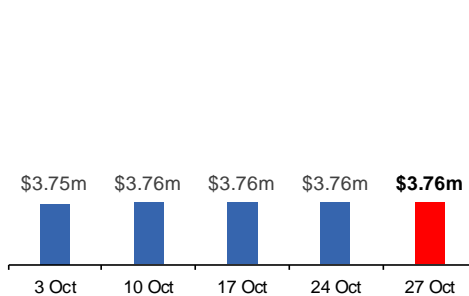
Lockdown from 18 – 20 Jul  
Claiming period ended 13 Sep

**5,804 people have received at least one COVID Disaster Payment.**

**\$3.76m paid out as at 27 Oct 2021.**

**\$4,000 paid in initial payments in the week ending 24 Oct 2021.**

 Cumulative payments made by State since activation on 25 Aug 2021.




### Queensland

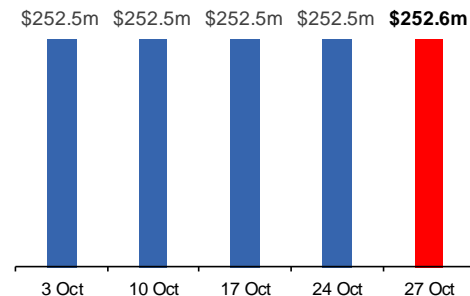
Lockdown from 31 Jul – 11 Aug  
Claiming period ended 28 Aug

**196,000 people have received at least one COVID Disaster Payment.**

**\$252.6m paid out as at 27 Oct 2021.**

**\$19,000 paid in initial and reoccurring payments in the week ending 24 Oct 2021.**

 Cumulative payments made by State since activation on 7 Aug 2021.




### South Australia

Lockdown from 21 – 27 Jul  
Claiming period ended 17 Aug

**86,000 people have received at least one COVID Disaster Payment.**

**\$48.2m paid out as at 27 Oct 2021.**

**\$1,000 paid in initial payments in the week ending 24 Oct 2021.**

 Cumulative payments made by State since activation on 28 Jul 2021.

