



Australian Government
Operation COVID Shield

COVID-19 Vaccine Roll-out

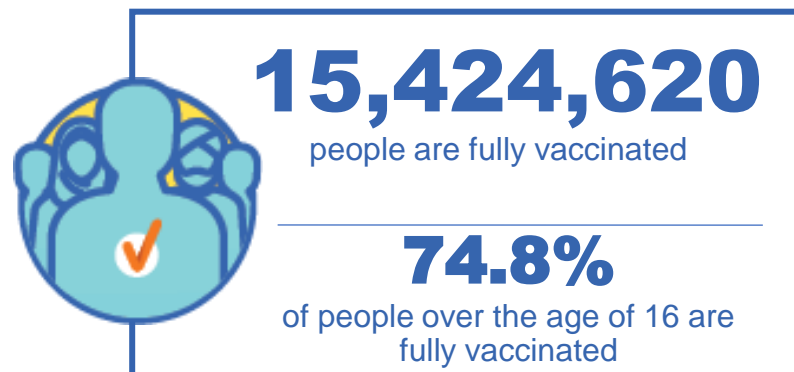
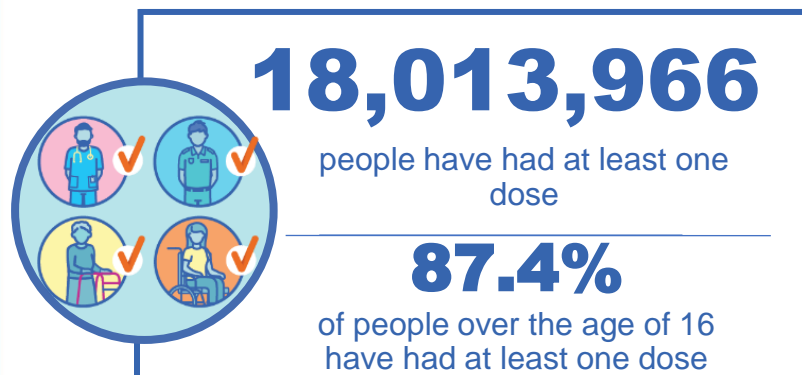
27 October 2021

Data as at:
26 Oct 2021

Total vaccine doses



34,828,566 total vaccine
doses administered nationally as at 26 October
+227,994 recorded in the last 24 hours



*Administration state breakdown indicates state in which a vaccine was administered

**Overall dose count includes instances of more than two doses per person in a small number of cases.

Source: Australian Immunisation Register

Data as at:
26 Oct 2021

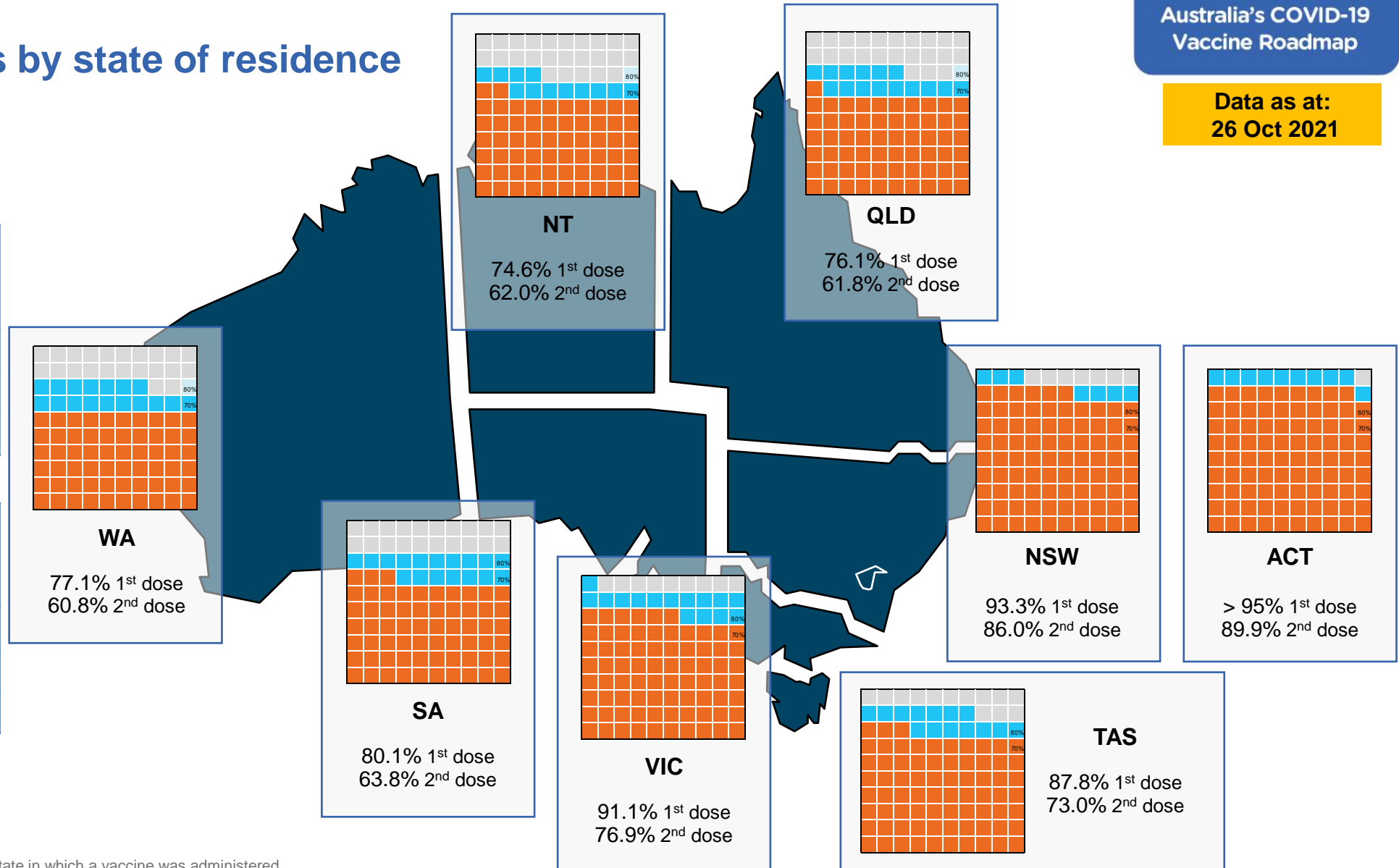
Vaccinations by state of residence

First doses

Age	Today	4 weeks ago	8 weeks ago
16+	87.4%	78.0%	60.8%
50+	94.6%	89.4%	80.5%
70+	>95%	>95%	89.4%

Fully vaccinated

Age	Today	4 weeks ago	8 weeks ago
16+	74.8%	54.1%	36.5%
50+	84.2%	71.5%	54.2%
70+	88.8%	79.1%	65.5%



*Residential state may differ from the state in which a vaccine was administered

Commonwealth and Jurisdiction vaccine doses administered

Data as at:
26 Oct 2021

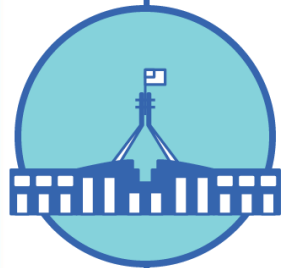


14,442,901

doses administered by state
and territory facilities

+ 68,757

recorded in the last 24 hours



20,385,665

doses administered by
commonwealth facilities

+ 159,237

recorded in the last 24 hours

19,340,191 total vaccine doses
administered in primary care settings

1,045,474 total vaccine doses
administered in aged care and disability
settings



34,828,566 total vaccine

doses administered nationally as at 26 October

+ 227,994 recorded in the last 24 hours

NSW	Jurisdictions	Commonwealth
Cumulative	4,068,421	8,140,155
Daily increase	7,804	39,466

VIC	Jurisdictions	Commonwealth
Cumulative	4,429,879	5,156,539
Daily increase	23,839	54,032

QLD	Jurisdictions	Commonwealth
Cumulative	2,469,075	3,505,173
Daily increase	14,075	34,226

WA	Jurisdictions	Commonwealth
Cumulative	1,452,123	1,573,980
Daily increase	9,202	16,269

TAS	Jurisdictions	Commonwealth
Cumulative	402,441	323,700
Daily increase	1,871	2,332

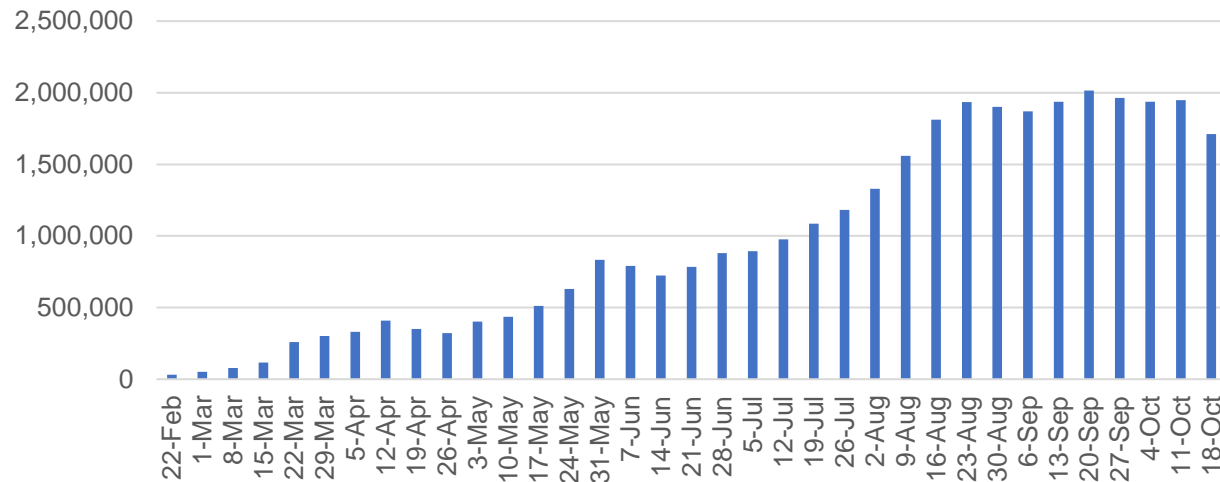
SA	Jurisdictions	Commonwealth
Cumulative	998,172	1,125,743
Daily increase	7,059	9,716

ACT	Jurisdictions	Commonwealth
Cumulative	434,553	436,039
Daily increase	3,964	2,355

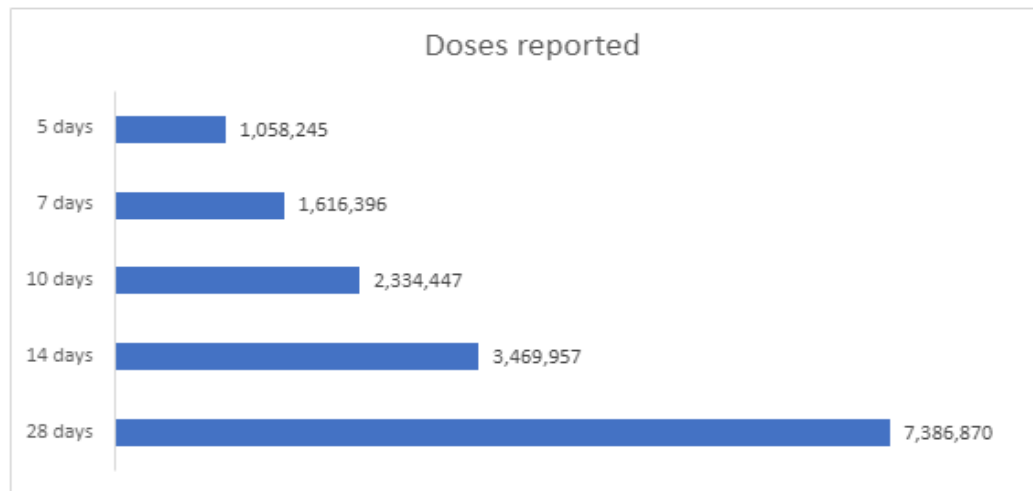
NT	Jurisdictions	Commonwealth
Cumulative	188,237	124,336
Daily increase	943	841

Vaccine milestone charts

Jabs in arms by week



Doses reported

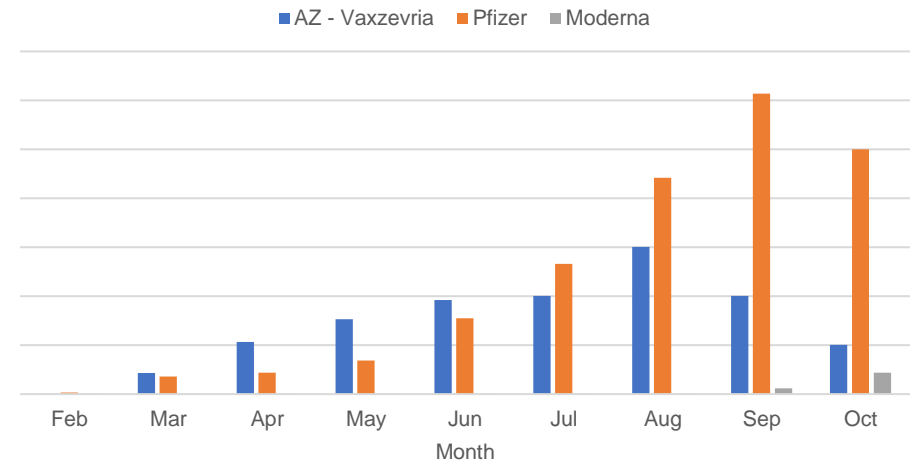


*Sourced from the Australian Immunisation Register.

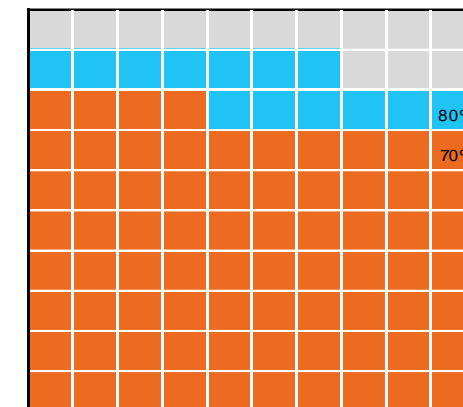
Data as at:
26 Oct 2021

Australia's COVID-19
Vaccine Roadmap

Doses by administration month and vaccine type



Eligible population percentage coverage



1st dose: 87.4% 2nd dose: 74.8%

*Each square represents 1% of the national population. Squares are filled as milestones are achieved.

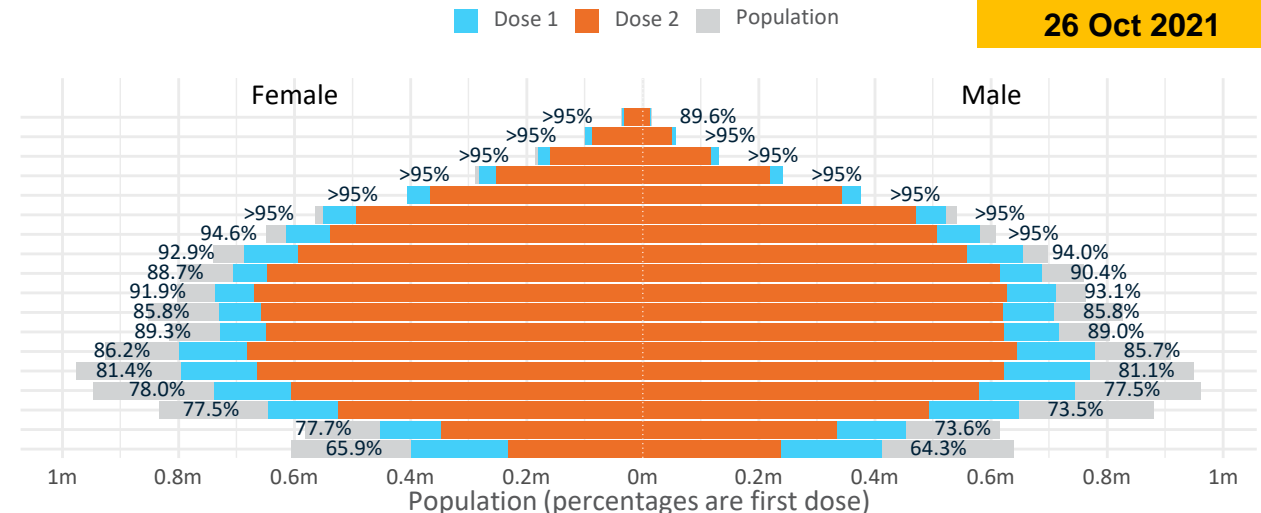
Data as at:
26 Oct 2021

Doses by age and sex

First and second doses by age and sex

	16+	50+	70+	12-15
Dose 1	87.36% (18,013,966 doses / 20,619,959 people)	94.61% (8,277,871 doses / 8,749,703 people)	>95% (2,895,718 doses / 2,934,706 people)	65.10% (809,829 doses / 1,243,990 people)
Dose 2	74.80% (15,424,620 doses / 20,619,959 people)	84.15% (7,363,176 doses / 8,749,703 people)	88.78% (2,605,427 doses / 2,934,706 people)	37.70% (468,963 doses / 1,243,990 people)

Age	Dose 1	Dose 2
95+	49,898 (94.3%)	43,298 (81.8%)
90-94	156,033 (>95%)	138,059 (87.1%)
85-89	311,329 (>95%)	277,258 (87.7%)
80-84	523,060 (>95%)	471,882 (89.3%)
75-79	782,346 (>95%)	709,715 (91.7%)
70-74	1,073,052 (>95%)	965,215 (87.4%)
65-69	1,195,224 (95.0%)	1,044,625 (83.0%)
60-64	1,343,697 (93.5%)	1,151,997 (80.2%)
55-59	1,394,410 (89.6%)	1,263,300 (81.2%)
50-54	1,448,822 (92.6%)	1,297,827 (83.0%)
45-49	1,440,699 (85.9%)	1,278,086 (76.2%)
40-44	1,447,376 (89.3%)	1,271,531 (78.5%)
35-39	1,581,672 (86.2%)	1,328,655 (72.4%)
30-34	1,571,179 (81.7%)	1,291,190 (67.1%)
25-29	1,492,520 (78.3%)	1,190,501 (62.4%)
20-24	1,298,204 (75.8%)	1,019,491 (59.5%)
16-19	904,445 (75.6%)	681,990 (57.0%)
12-15	809,829 (65.1%)	468,963 (37.7%)



	AUS	ACT	NSW	NT	QLD	SA	TAS	VIC	WA
16 and over - dose 1	18,013,966	340,608	6,124,487	142,195	3,130,857	1,153,212	386,611	4,924,839	1,630,184
16 and over - dose 2	15,424,620	309,254	5,644,157	118,179	2,541,435	918,583	321,526	4,158,297	1,285,786
16 and over - population	20,619,959*	344,037	6,565,651	190,571	4,112,707	1,440,400	440,172	5,407,574	2,114,978
16 and over % with dose 1	87.36%	>95%	93.28%	74.62%	76.13%	80.06%	87.83%	91.07%	77.08%
16 and over % with dose 2	74.80%	89.89%	85.96%	62.01%	61.79%	63.77%	73.05%	76.90%	60.79%
50 and over - dose 1	8,277,871	132,422	2,740,292	51,388	1,568,587	609,401	205,360	2,128,805	792,614
50 and over - dose 2	7,363,176	123,810	2,563,007	44,896	1,349,354	513,054	179,521	1,886,470	666,116
50 and over - population	8,749,703	127,802	2,807,793	62,280	1,758,855	674,384	220,036	2,211,211	885,370
50 and over % with dose 1	94.61%	>95%	>95%	82.51%	89.18%	90.36%	93.33%	>95%	89.52%
50 and over % with dose 2	84.15%	>95%	91.28%	72.09%	76.72%	76.08%	81.59%	85.31%	75.24%
70 and over - dose 1	2,895,718	43,015	965,162	10,809	551,180	231,393	75,854	730,923	267,522
70 and over - dose 2	2,605,427	40,195	903,248	9,511	488,310	197,814	66,757	654,155	229,414
70 and over - population	2,934,706	39,946	962,606	12,343	577,767	240,514	77,155	743,519	280,281
70 and over % with dose 1	>95%	>95%	>95%	87.57%	>95%	>95%	>95%	>95%	>95%
70 and over % with dose 2	88.78%	>95%	93.83%	77.06%	84.52%	82.25%	86.52%	87.98%	81.85%
12 to 15 - dose 1	809,829	19,215	306,501	6,711	126,281	36,207	14,348	244,117	51,562
12 to 15 - dose 2	468,963	13,580	213,966	3,692	64,302	13,559	4,475	134,405	18,843
12 to 15 - population	1,243,990	19,693	390,330	13,060	270,146	82,747	26,308	308,611	132,869
12 to 15 % with dose 1	65.10%	>95%	78.52%	51.39%	46.75%	43.76%	54.54%	79.10%	38.81%
12 to 15 % with dose 2	37.70%	68.96%	54.82%	28.27%	23.80%	16.39%	17.01%	43.55%	14.18%

*National population will not equal sum of listed jurisdictions due to a small number of people counted in national population residing in some 'other' territories. Sum of state doses will not add to national total as some records are unable to be geocoded to a State or Territory.

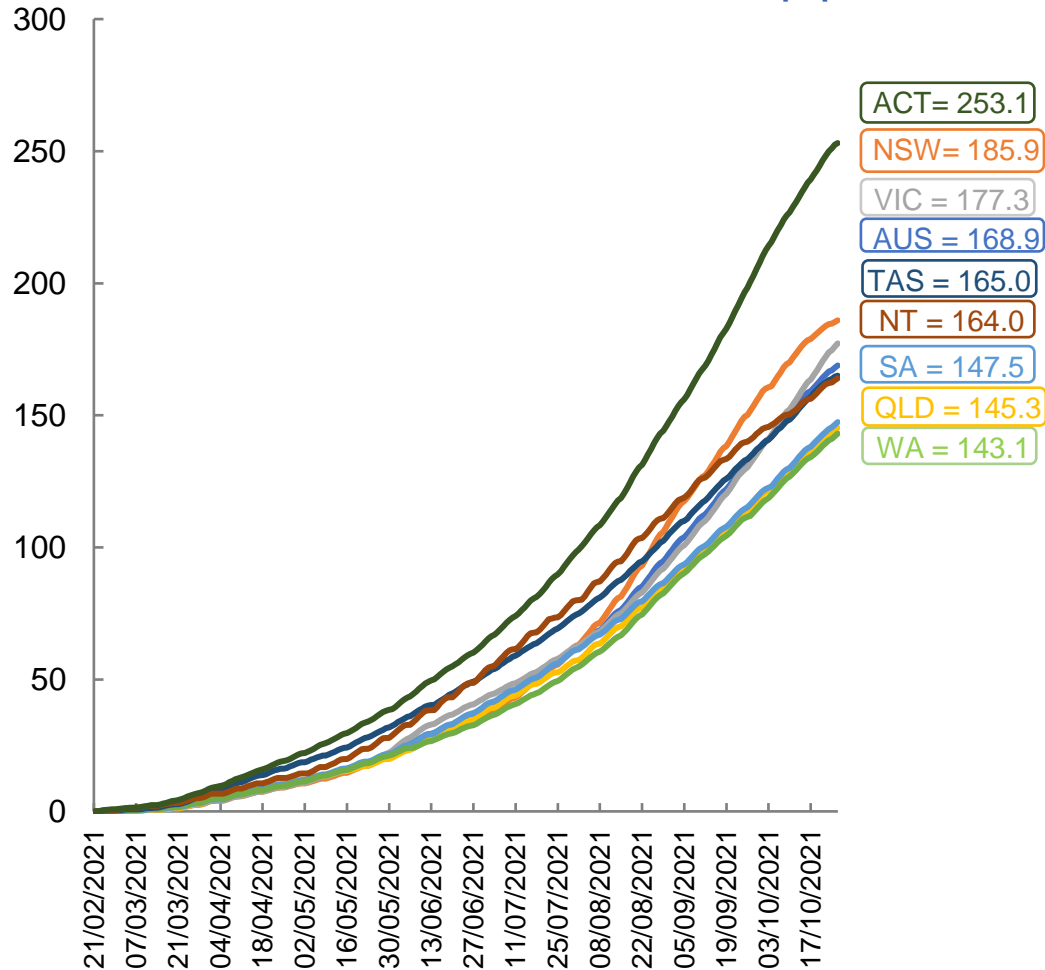
Doses sourced from Australian Immunisation Register, population from ABS ERP June 2020

Vaccinations by location

Data as at:
26 Oct 2021

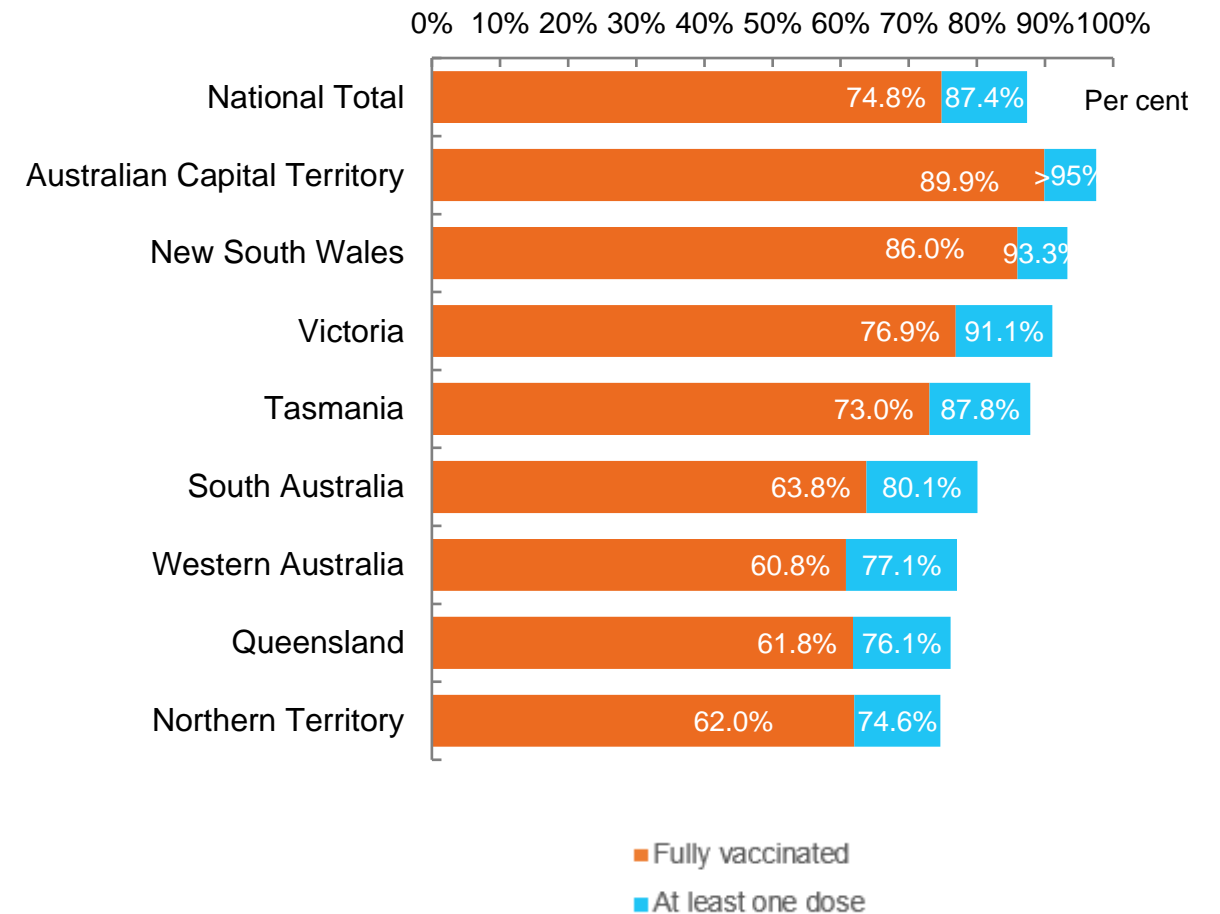
Australia's COVID-19
Vaccine Roadmap

Cumulative total doses administered vs state populations*



*Not an indication of percentage vaccinated, numbers will exceed 100 due to multiple doses required per person of the population

First and Second Doses by state of residence



Aboriginal and Torres Strait Islander peoples

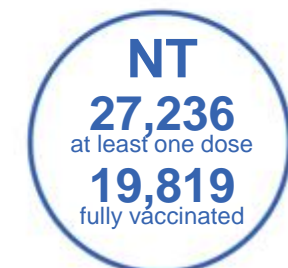
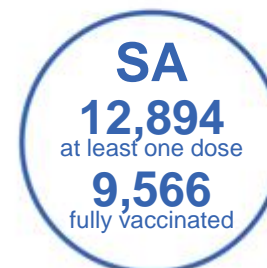
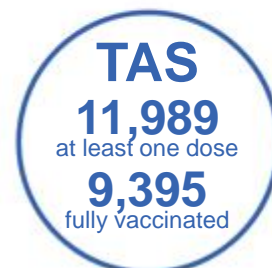
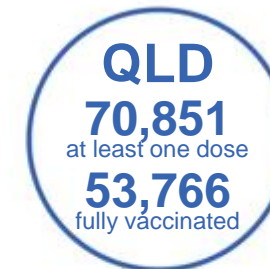
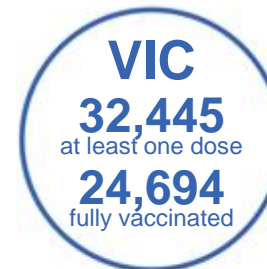
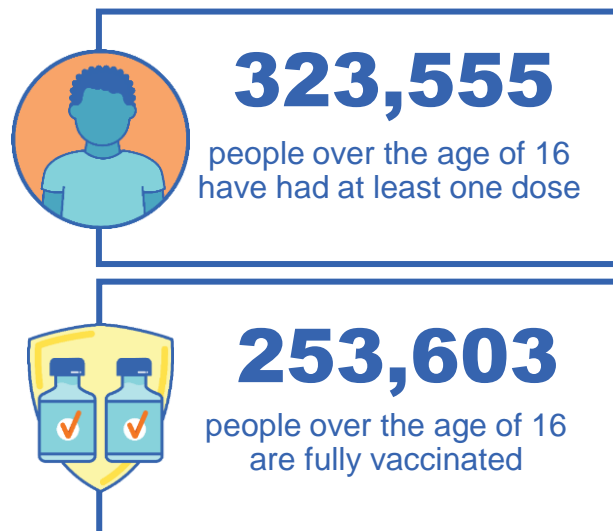
Number of people vaccinated

Data as at:
24 Oct 2021
Updated weekly

Australia's COVID-19
Vaccine Roadmap

169 Aboriginal community controlled health services (ACCHS)

0#	50	26	39	12	3	21	18
ACT	NSW	NT	QLD	SA	TAS	VIC	WA



8,623 people with at least one dose
5,626 people fully vaccinated

residing in other territories or with missing residential information
Source: Australian Immunisation Register

*Identifying as Aboriginal and Torres Strait Islander is optional and the estimated population may be under reported.

**Includes all Aboriginal and Torres Strait Islander peoples who have received a vaccination, not limited to those administered in an ACCHS setting

***Updated weekly.

#ACCHS in the ACT are currently operating as a Commonwealth Vaccine Clinics so not included to avoid double counting

Data as at:
26 Oct 2021

Commonwealth primary care



Primary care vaccine administration sites

5,592	137	169	3,408
GPs	CVCs	ACCHS	Pharmacies



19,340,191 total vaccine doses administered primary care settings as at 26 October
+ 157,670 recorded in the last 24 hours

Primary care vaccinations by provider type

	Doses administered	Daily increase	7 day increase
General Practice* includes other Commonwealth	17,811,462	121,059	799,838
Pharmacy	1,528,729	36,611	198,871



108,207 doses administered to persons residing in other territories or with missing residential information

*General practice includes Commonwealth Vaccination Clinics, Aboriginal Community Health Centres, Royal Flying Doctor Service and other Commonwealth vaccination facilities

Source: Australian Immunisation Register

Data as at:
26 Oct 2021

Commonwealth aged care and disability doses administered



1,045,474 (+ 1,567 last 24 hours)

Total vaccine doses administered in aged care and disability facilities as at 26 October

Number of doses administered as part of the Commonwealth aged and disability care rollout

NSW
508,896
(+233 daily increase)

VIC
195,648
(+396 daily increase)

QLD
151,970
(+450 daily increase)

WA
69,738
(+232 daily increase)

TAS
16,846
(-1# daily increase)

SA
59,847
(+201 daily increase)

ACT
12,934
(+1 daily increase)

NT
5,747
(+0 daily increase)

*Sourced from the Australian Immunisation Register. Includes all persons vaccinated at participating residential aged care, disability and related industry settings.

**State level breakdown indicates the residential location and may not align to the state in which the vaccination occurred.

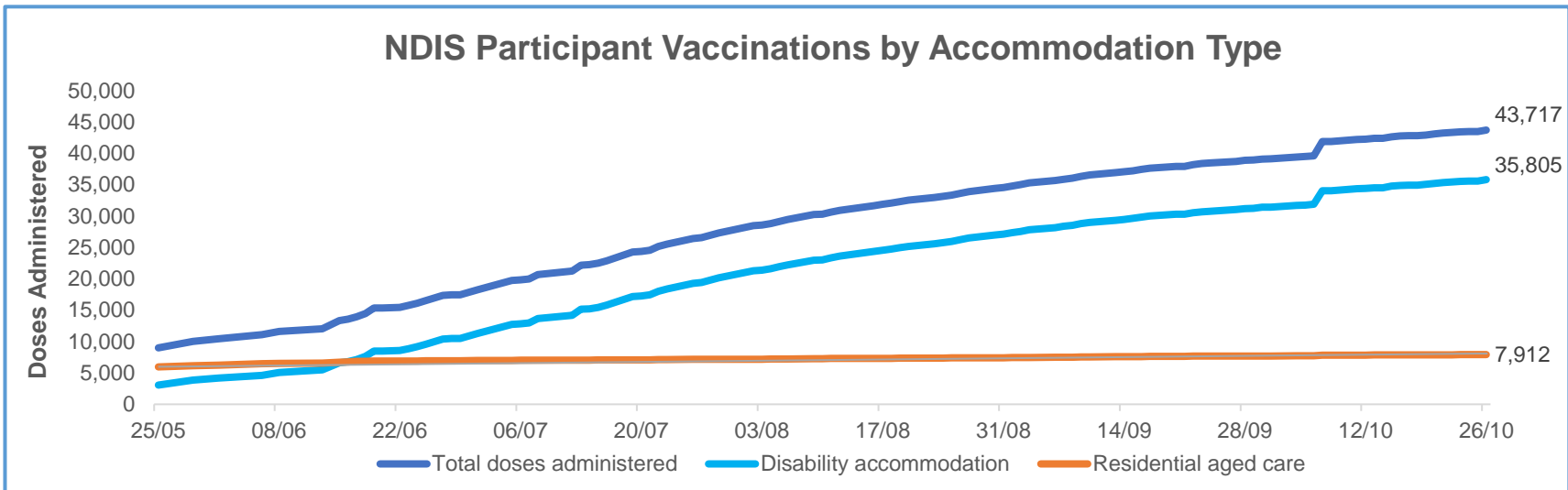
Numbers are calculated as difference in daily cumulative reported numbers to allow for historical corrections in all data sources. This can occasionally result in negative numbers, such as for TAS, where historical details about doses have been updated.

23,848 doses administered to persons residing in other territories or with missing residential information

Data as at:
26 Oct 2021*

Vaccination rate of people with disability and the disability workforce

Phase 1a – People with disability living in shared accommodation



	Total people with at least one dose	People fully vaccinated	Total number of individuals in cohort	Total doses administered	% People with at least one dose	% People fully vaccinated
NDIS participants living in shared accommodation **	22,678	21,039	27,603	43,717	82.2%	76.2%
NDIS screened workers ***	183,669	165,073	223,262	348,742	82.3%	73.9%



* Updates are available Monday to Friday on participants, and bi-weekly for workers, numbers may be up to four days old.

** Shared accommodation means two or more people with disability living in shared residential accommodation and NDIS participants living in Residential Aged Care accommodation as per the eligibility criteria of Phase 1a.

*** Total number of workers within the NDIS Commission Worker Screening database who have ever been successfully screened and linked to an NDIS registered provider or participant.

Source: Linkage between National Disability Insurance Agency data, NDIS Quality and Safeguards Commission data and the Australian Immunisation Register.

Residential aged care vaccination rollout

Residential aged care facilities status

100% Commonwealth facilities visited (2,573 planned sites)

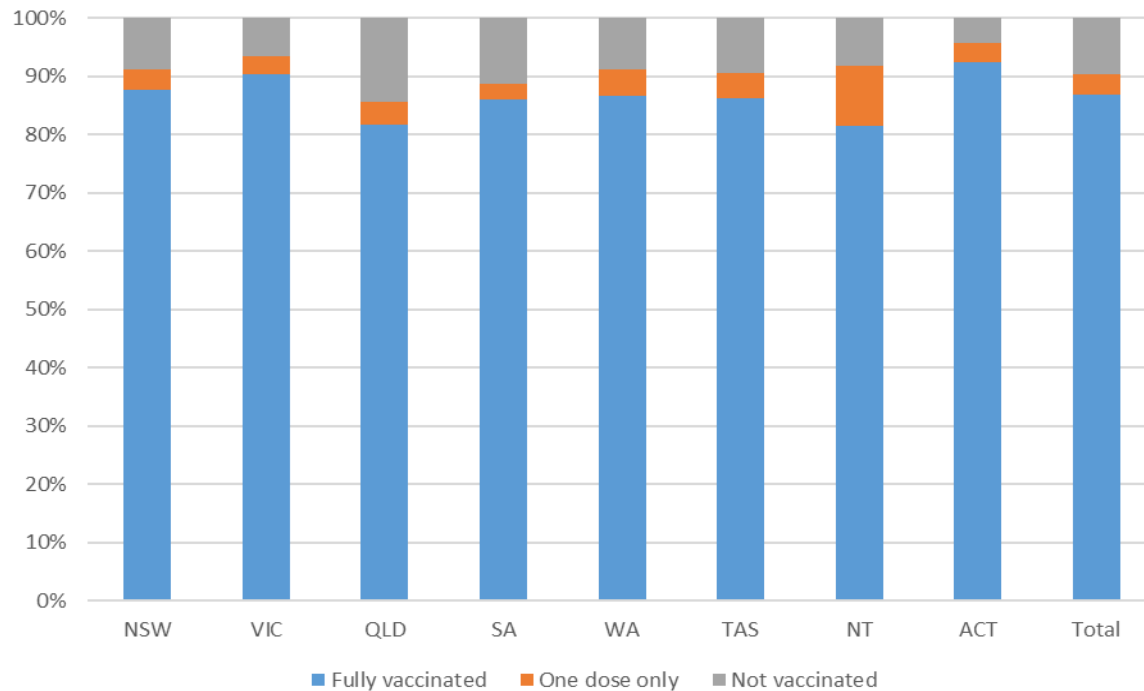
161,922 People fully vaccinated

168,469 People with at least one dose

Australia's COVID-19 Vaccine Roadmap

Data as at:
26 Oct 2021

Aged care resident vaccinations



Aged care worker vaccinations

Jurisdictions	Total workers with at least one dose	Workers fully vaccinated	% Workers with at least one dose	% Workers fully vaccinated
NSW	78,574	76,467	98.7%	96.1%
VIC	71,401	66,757	99.8%	93.3%
QLD	48,674	44,651	99.9%	91.7%
SA	27,197	25,383	99.6%	93.0%
WA	23,556	20,726	99.8%	87.8%
TAS	7,634	6,899	99.9%	90.3%
NT	827	804	99.3%	96.5%
ACT	2,969	2,867	99.9%	96.5%
Total	260,832	244,554	99.5%	93.3%

Source: My Aged Care Portal staff vaccination progress

**Resident vaccination information is reported manually by service providers

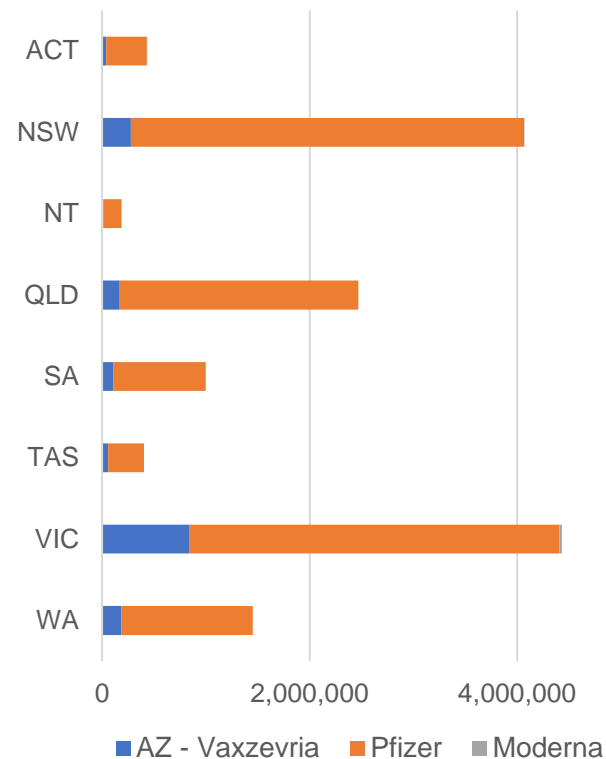
*Status updates are provided by facilities at least once per week. Reporting is updated Monday to Friday to encompass different facility updates being made on different days.

Data is sourced directly from Aged Care Service Providers and is not drawn or closely aligned with data from AIR due to inconsistencies and potential lags in uploading of records.

Data as at:
26 Oct 2021

Jurisdiction administered

Total vaccine doses administered in State and Territory clinics as at 26 October



14,442,901 total vaccine doses administered
in State and Territory clinics as at 26 October
+ **68,757** recorded in the last 24 hours
+ **598,475** recorded in the last 7 days

NSW
4,068,421
(+7,804 daily
increase)

VIC
4,429,879
(+23,839 daily
increase)

QLD
2,469,075
(+14,075 daily
increase)

WA
1,452,123
(+9,202 daily
increase)

TAS
402,441
(+1,871 daily
increase)

SA
998,172
(+7,059 daily
increase)

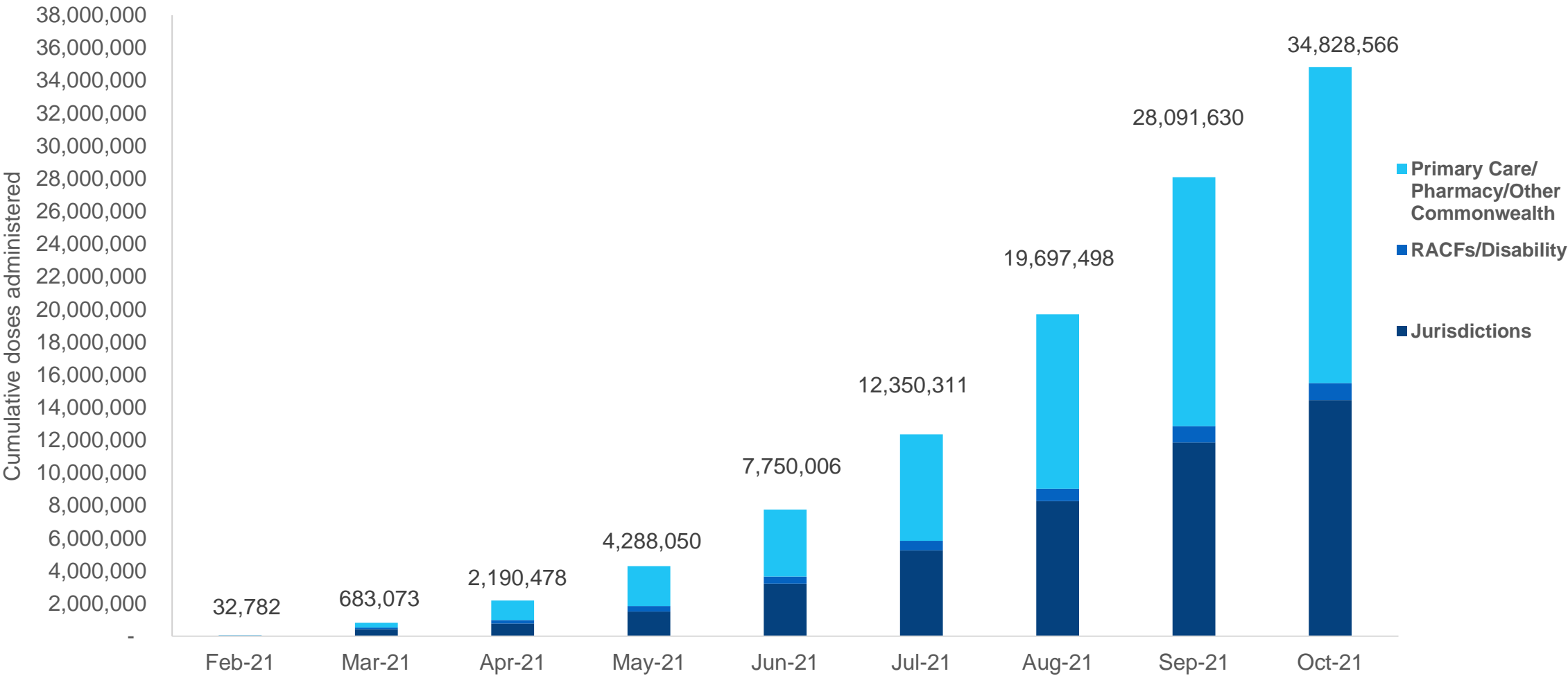
ACT
434,553
(+3,964 daily
increase)

NT
188,237
(+943 daily
increase)

*Sourced from the Australian Immunisation Register and self-reported data. Numbers are calculated as difference in daily cumulative reported numbers to allow for historical corrections in all self-reported data sources.

Cumulative doses administered by channel

Data as at:
26 Oct 2021



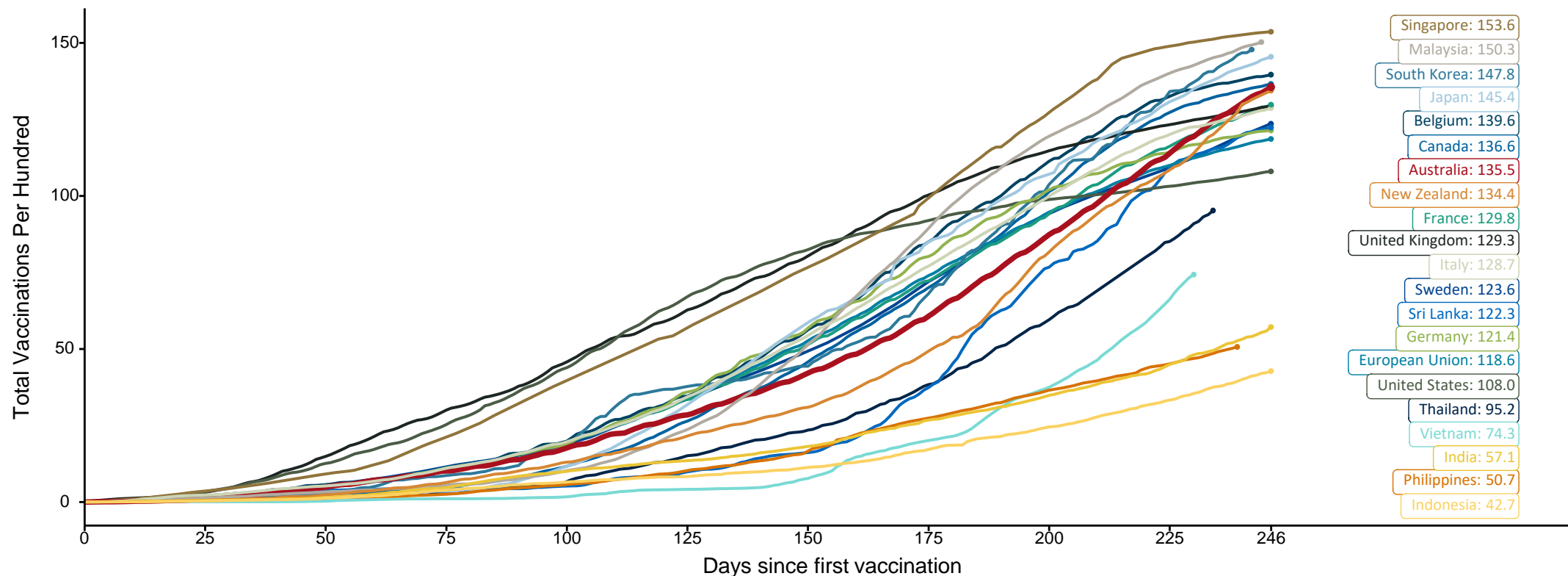
Source: Australian Immunisation Register

Doses at equivalent stages of rollout (Day 246)

Data as at:
26 Oct 2021

The x-axis is truncated at the length of Australia's vaccination program. Countries with intermittent reporting have had their doses per 100 imputed to Australia's current stage of rollout. Israel excluded as it is beyond scale of the graph

Cumulative doses administered (26 Oct): **34,828,566**

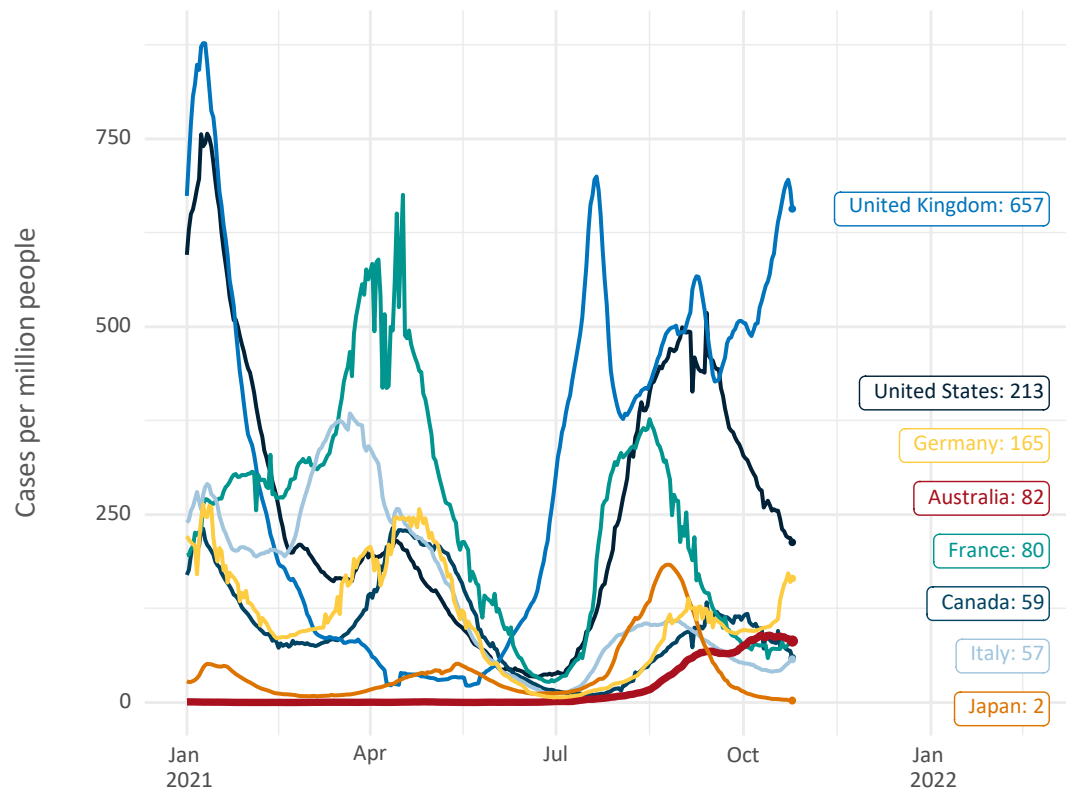


Note: From 15 September 2021, data for Australia includes all doses administered to people 12 and over. Prior to 15 September, data was for 16 and over
Source: Department of Health (Australia), Our World in Data (international)
Latest data: 26 October

International data – COVID-19

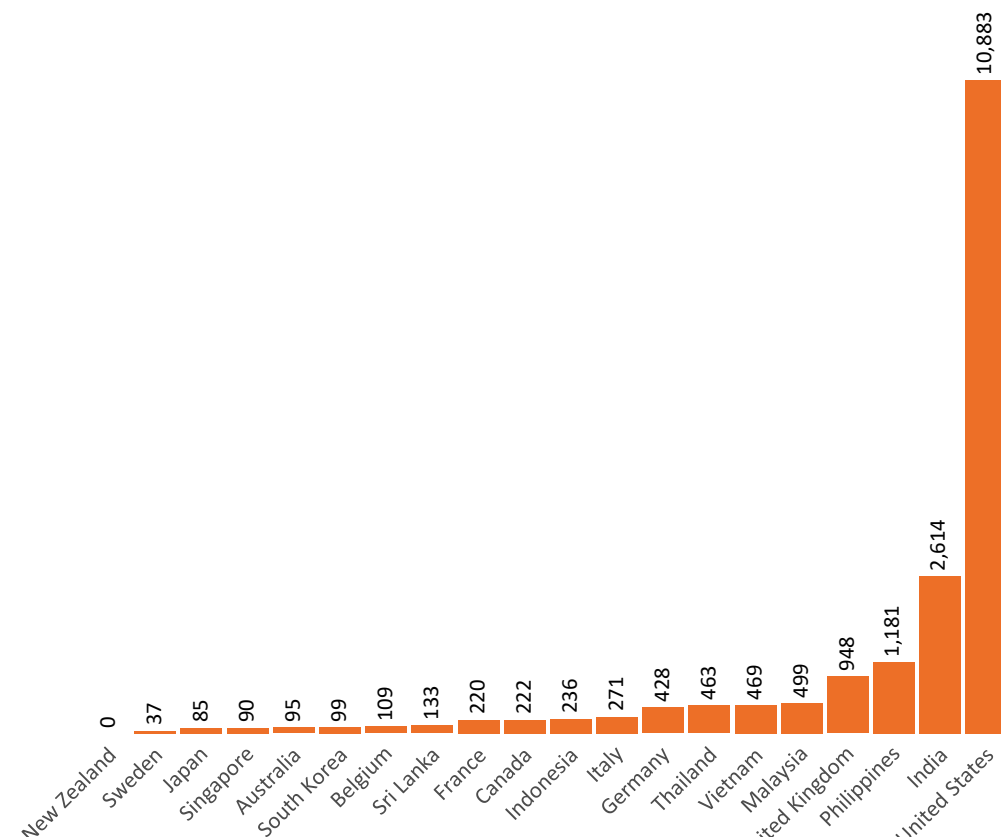
Data as at:
26 Oct 2021

New daily cases per million in 2021, Australia and G7 countries
Smoothed - 7 day average



Source: OWID
Data downloaded: 27 Oct 2021 07:27
Latest data: 25 Oct 2021

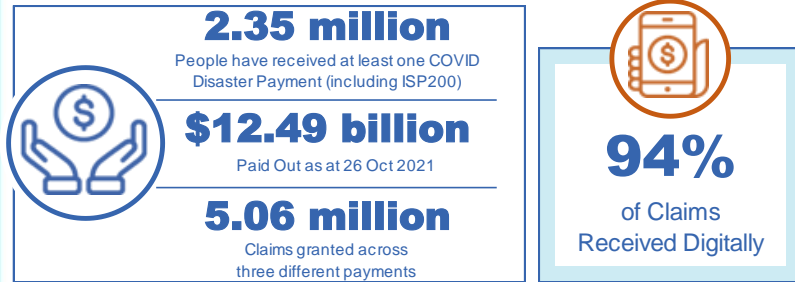
COVID-19 deaths in past 7 days - Australia and select countries



Source: OWID
Data downloaded: 27 Oct 2021 07:27
Latest data: 25 Oct 2021

Data as at midnight:
26 Oct 2021

Pandemic Response Payments (Current)



COVID Disaster Payment:	4.91 million claims received - 2.17 million individuals paid a total of \$12.08 billion.
\$200 Income Support Payment:	303,000 claims received - 180,000 individuals paid a total of \$260.32 million.
Pandemic Leave Disaster Payment:	109,000 claims received - 94,000 individuals paid a total of \$152.70 million.



COVID Disaster Payment

assisting during a lockdown event in a Commonwealth hotspot.

Income Support Payment \$200

for income support recipients who lost at least 8 hours of work.

Pandemic Leave Disaster Payment

for those who have to self-isolate, quarantine or care.

For more information visit:
servicesaustralia.gov.au

CURRENT COVID-19 DISASTER PAYMENTS

New South Wales

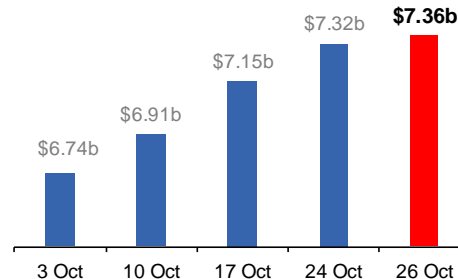
Active lockdown since 24 Jun
Partial reopening from 10 Oct

1.08m people have received at least one COVID Disaster Payment.

\$7.36b paid out as at 26 Oct 2021.

\$170m paid in initial and reoccurring payments in the week ending 24 Oct 2021.

Cumulative payments made by State since activation on 1 Jul 2021.



Victoria

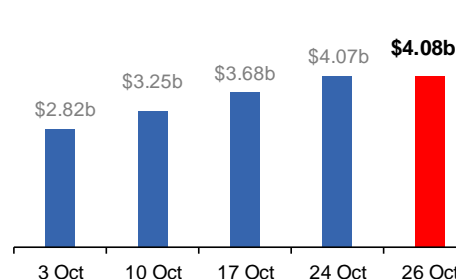
Active lockdown (#6) since 6 Aug

733,000 people have received at least one COVID Disaster Payment.

\$4.08b paid out as at 26 Oct 2021.

\$397m paid in initial and reoccurring payments in the week ending 24 Oct 2021.

Cumulative payments made by State since activation on 8 Jun 2021.



Australian Capital Territory

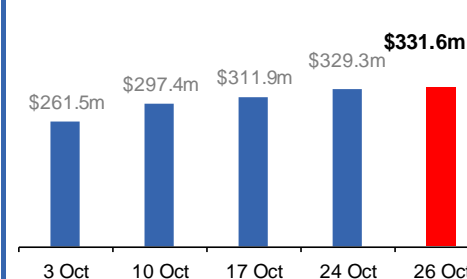
Active lockdown since 12 Aug
Partial reopening from 14 Oct

65,000 people have received at least one COVID Disaster Payment.

\$331.6m paid out as at 26 Oct 2021.

\$17m paid in initial and reoccurring payments in the week ending 24 Oct 2021.

Cumulative payments made by State since activation on 20 Aug 2021.



Tasmania

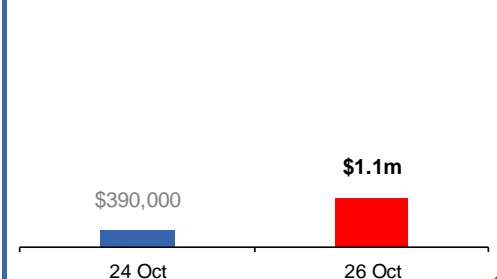
Lockdown from 15 Oct to 18 Oct
Claiming period ends 12 Nov

2,100 people have received at least one COVID Disaster Payment.

\$1.1m paid out as at 26 Oct 2021.

\$390,000 paid in initial payments in the week ending 24 Oct 2021.

Cumulative payments made by State since activation on 22 Oct 2021.



Pandemic Response Payments (Closed Events)

Data as at midnight:
26 Oct 2021

CLOSED COVID-19 DISASTER PAYMENTS

