



**Australian Government**  
**Operation COVID Shield**

# COVID-19 Vaccine Roll-out

25 October 2021

Data as at:  
24 Oct 2021

## Total vaccine doses



**34,364,950** total vaccine  
doses administered nationally as at 24 October  
**+126,471** recorded in the last 24 hours



**17,899,161**

people have had at least one  
dose

**86.8%**

of people over the age of 16  
have had at least one dose



**15,140,516**

people are fully vaccinated

**73.4%**

of people over the age of 16 are  
fully vaccinated

**NSW**  
**12,114,895**  
(+15,598 daily  
increase)

**VIC**  
**9,421,011**  
(+48,097 daily  
increase)

**QLD**  
**5,878,029**  
(+35,564 daily  
increase)

**WA**  
**2,976,507**  
(+11,657 daily  
increase)

**TAS**  
**717,621**  
(+2,218 daily  
increase)

**SA**  
**2,092,321**  
(+9,446 daily  
increase)

**ACT**  
**855,730**  
(+3,437 daily  
increase)

**NT**  
**308,836**  
(+454 daily  
increase)

\*Administration state breakdown indicates state in which a vaccine was administered

\*\*Overall dose count includes instances of more than two doses per person in a small number of cases.

Source: Australian Immunisation Register

Data as at:  
24 Oct 2021

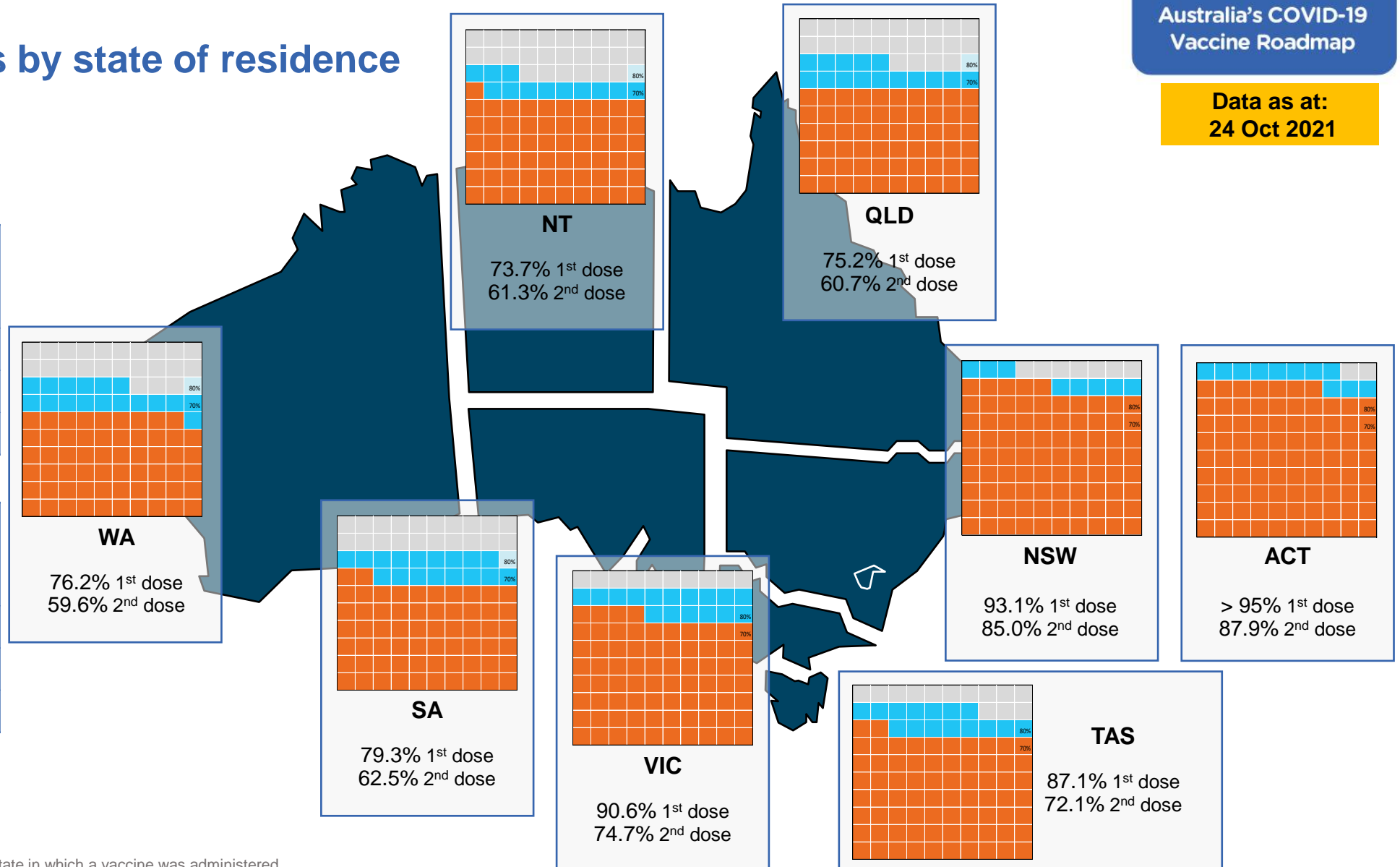
## Vaccinations by state of residence

### First doses

Age	Today	4 weeks ago	8 weeks ago
16+	86.8%	76.9%	59.2%
50+	94.3%	88.8%	79.5%
70+	>95%	94.7%	88.8%

### Fully vaccinated

Age	Today	4 weeks ago	8 weeks ago
16+	73.4%	52.6%	35.2%
50+	83.1%	70.3%	52.2%
70+	87.8%	78.1%	63.9%



\*Residential state may differ from the state in which a vaccine was administered

## Commonwealth and Jurisdiction vaccine doses administered

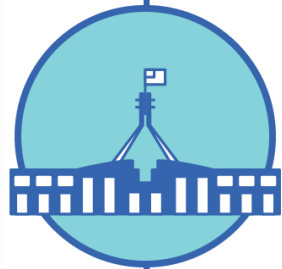
Data as at:  
24 Oct 2021



**34,364,950** total vaccine  
doses administered nationally as at 24 October  
**+ 126,471** recorded in the last 24 hours



**14,238,126**  
doses administered by state  
and territory facilities  
**+ 77,984**  
recorded in the last 24 hours



**20,126,824**  
doses administered by  
commonwealth facilities  
**+ 48,487**  
recorded in the last 24 hours  
**19,023,314** total vaccine doses  
administered in primary care settings  
**1,103,510** total vaccine doses  
administered in aged care and disability  
settings

NSW	Jurisdictions	Commonwealth
Cumulative	4,050,980	8,063,915
Daily increase	5,850	9,748

VIC	Jurisdictions	Commonwealth
Cumulative	4,378,208	5,042,803
Daily increase	27,885	20,212

QLD	Jurisdictions	Commonwealth
Cumulative	2,378,199	3,499,830
Daily increase	25,001	10,563

WA	Jurisdictions	Commonwealth
Cumulative	1,434,674	1,541,833
Daily increase	6,695	4,962

TAS	Jurisdictions	Commonwealth
Cumulative	399,073	318,548
Daily increase	2,105	113

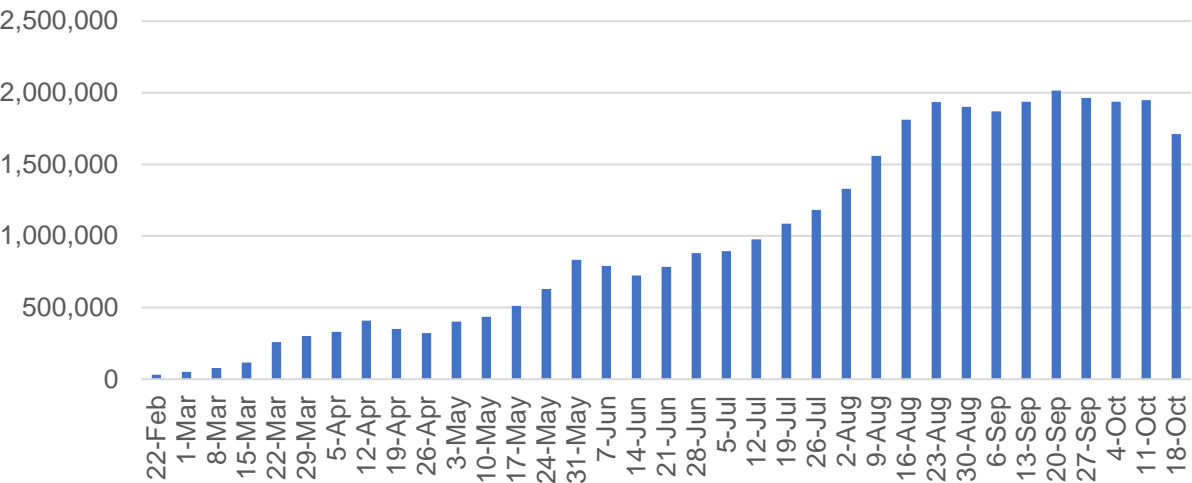
SA	Jurisdictions	Commonwealth
Cumulative	983,697	1,108,624
Daily increase	7,182	2,264

ACT	Jurisdictions	Commonwealth
Cumulative	426,971	428,759
Daily increase	2,822	615

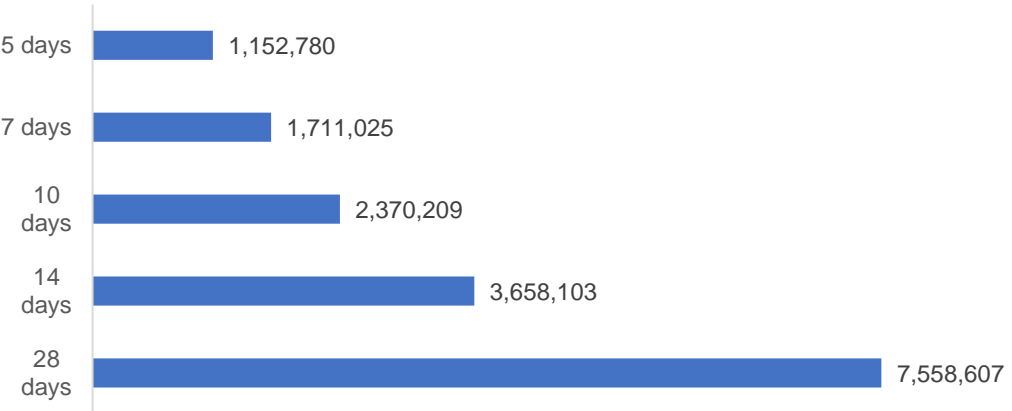
NT	Jurisdictions	Commonwealth
Cumulative	186,324	122,512
Daily increase	444	10

# Vaccine milestone charts

Jabs in arms by week



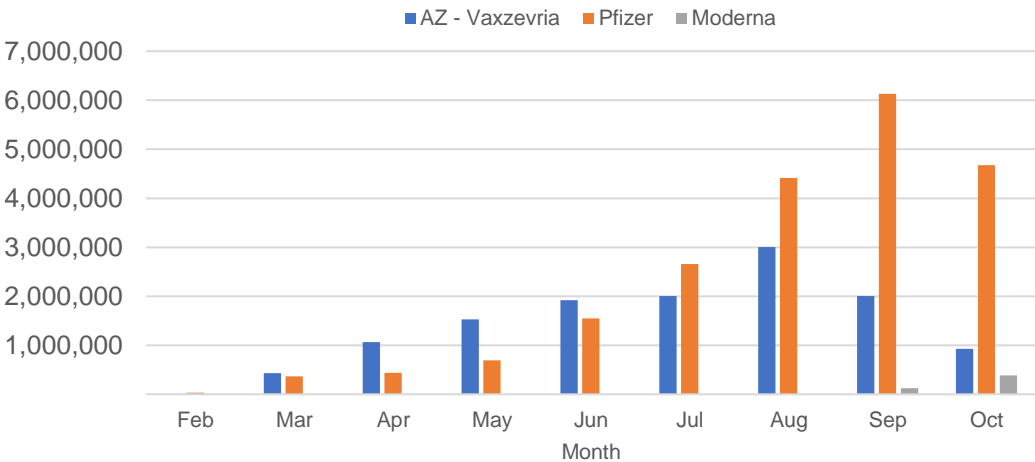
Doses reported



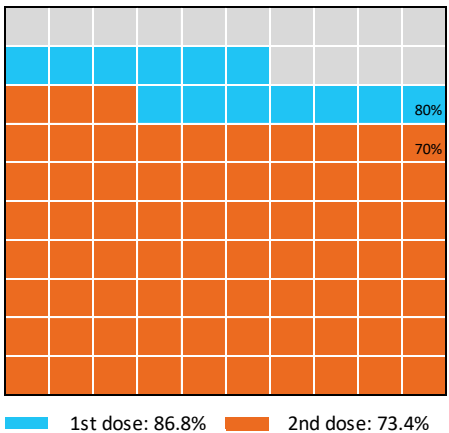
Data as at:  
24 Oct 2021

Australia's COVID-19  
Vaccine Roadmap

Doses by administration month and vaccine type



Eligible population percentage coverage



\*Each square represents 1% of the national population. Squares are filled as milestones are achieved.

\*Sourced from the Australian Immunisation Register.

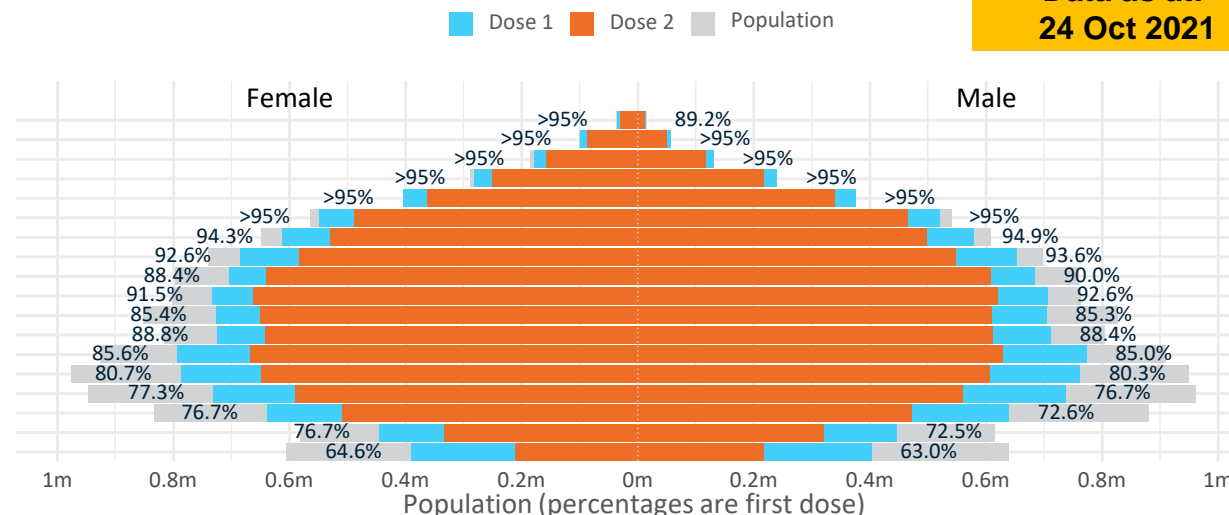
Data as at:  
24 Oct 2021

# Doses by age and sex

First and second doses by age and sex

	16+	50+	70+	12-15
Dose 1	86.81% (17,899,161 doses / 20,619,959 people)	94.27% (8,248,215 doses / 8,749,703 people)	>95% (2,887,612 doses / 2,934,706 people)	63.80% (793,696 doses / 1,243,990 people)
Dose 2	73.43% (15,140,516 doses / 20,619,959 people)	83.10% (7,271,373 doses / 8,749,703 people)	87.85% (2,578,022 doses / 2,934,706 people)	34.47% (428,747 doses / 1,243,990 people)

Age	Dose 1	Dose 2
95+	49,674 (93.9%)	42,903 (81.1%)
90-94	155,504 (>95%)	136,801 (86.4%)
85-89	310,336 (>95%)	274,437 (86.8%)
80-84	521,660 (>95%)	467,183 (88.4%)
75-79	780,087 (>95%)	702,327 (90.8%)
70-74	1,070,351 (>95%)	954,371 (86.4%)
65-69	1,191,617 (94.7%)	1,029,081 (81.8%)
60-64	1,338,716 (93.2%)	1,132,127 (78.8%)
55-59	1,388,707 (89.3%)	1,249,619 (80.3%)
50-54	1,441,563 (92.1%)	1,282,524 (82.0%)
45-49	1,432,390 (85.4%)	1,261,683 (75.2%)
40-44	1,437,916 (88.7%)	1,253,541 (77.4%)
35-39	1,569,670 (85.5%)	1,299,144 (70.8%)
30-34	1,556,926 (80.9%)	1,258,993 (65.4%)
25-29	1,477,577 (77.5%)	1,155,814 (60.6%)
20-24	1,284,053 (75.0%)	985,071 (57.5%)
16-19	892,414 (74.6%)	654,897 (54.8%)
12-15	793,696 (63.8%)	428,747 (34.5%)



	AUS	ACT	NSW	NT	QLD	SA	TAS	VIC	WA
16 and over - dose 1	17,899,161	339,721	6,110,144	140,381	3,093,411	1,141,746	383,388	4,897,196	1,611,686
16 and over - dose 2	15,140,516	302,240	5,579,636	116,866	2,496,426	900,935	317,430	4,041,812	1,260,094
16 and over - population	20,619,959*	344,037	6,565,651	190,571	4,112,707	1,440,400	440,172	5,407,574	2,114,978
16 and over % with dose 1	86.81%	>95%	93.06%	73.66%	75.22%	79.27%	87.10%	90.56%	76.20%
16 and over % with dose 2	73.43%	87.85%	84.98%	61.32%	60.70%	62.55%	72.11%	74.74%	59.58%
50 and over - dose 1	8,248,215	132,237	2,735,926	51,057	1,559,374	606,363	204,534	2,120,856	788,723
50 and over - dose 2	7,271,373	122,511	2,539,596	44,533	1,332,301	506,144	177,990	1,854,877	656,758
50 and over - population	8,749,703	127,802	2,807,793	62,280	1,758,855	674,384	220,036	2,211,211	885,370
50 and over % with dose 1	94.27%	>95%	>95%	81.98%	88.66%	89.91%	92.95%	>95%	89.08%
50 and over % with dose 2	83.10%	>95%	90.45%	71.50%	75.75%	75.05%	80.89%	83.89%	74.18%
70 and over - dose 1	2,887,612	42,961	963,635	10,767	549,121	230,536	75,599	728,405	266,719
70 and over - dose 2	2,578,022	39,865	895,647	9,454	483,791	195,528	66,278	644,823	226,717
70 and over - population	2,934,706	39,946	962,606	12,343	577,767	240,514	77,155	743,519	280,281
70 and over % with dose 1	>95%	>95%	>95%	87.23%	>95%	>95%	>95%	>95%	>95%
70 and over % with dose 2	87.85%	>95%	93.04%	76.59%	83.73%	81.30%	85.90%	86.73%	80.89%
12 to 15 - dose 1	793,696	19,072	304,321	6,438	120,735	34,759	13,801	240,108	49,660
12 to 15 - dose 2	428,747	11,705	201,101	3,574	58,538	12,241	3,748	119,381	16,497
12 to 15 - population	1,243,990	19,693	390,330	13,060	270,146	82,747	26,308	308,611	132,869
12 to 15 % with dose 1	63.80%	>95%	77.97%	49.30%	44.69%	42.01%	52.46%	77.80%	37.38%
12 to 15 % with dose 2	34.47%	59.44%	51.52%	27.37%	21.67%	14.79%	14.25%	38.68%	12.42%

\*National population will not equal sum of listed jurisdictions due to a small number of people counted in national population residing in some 'other' territories. Sum of state doses will not add to national total as some records are unable to be geocoded to a State or Territory.

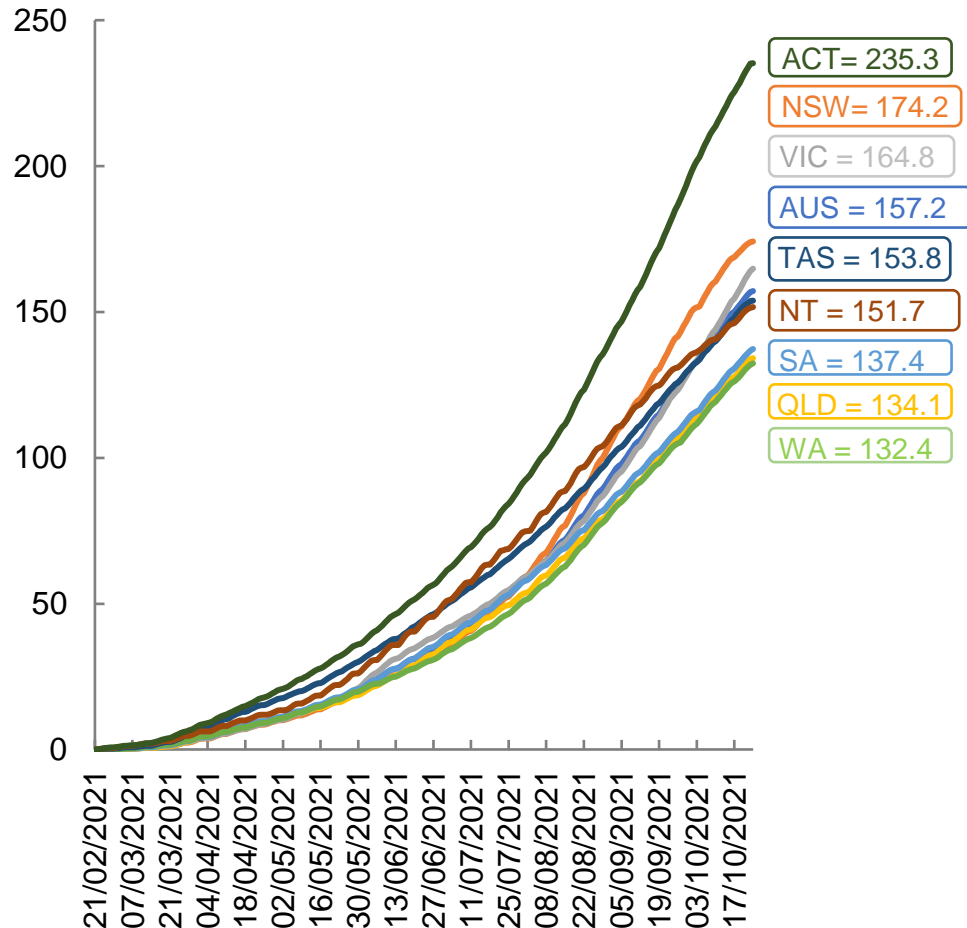
Doses sourced from Australian Immunisation Register, population from ABS ERP June 2020

# Vaccinations by location

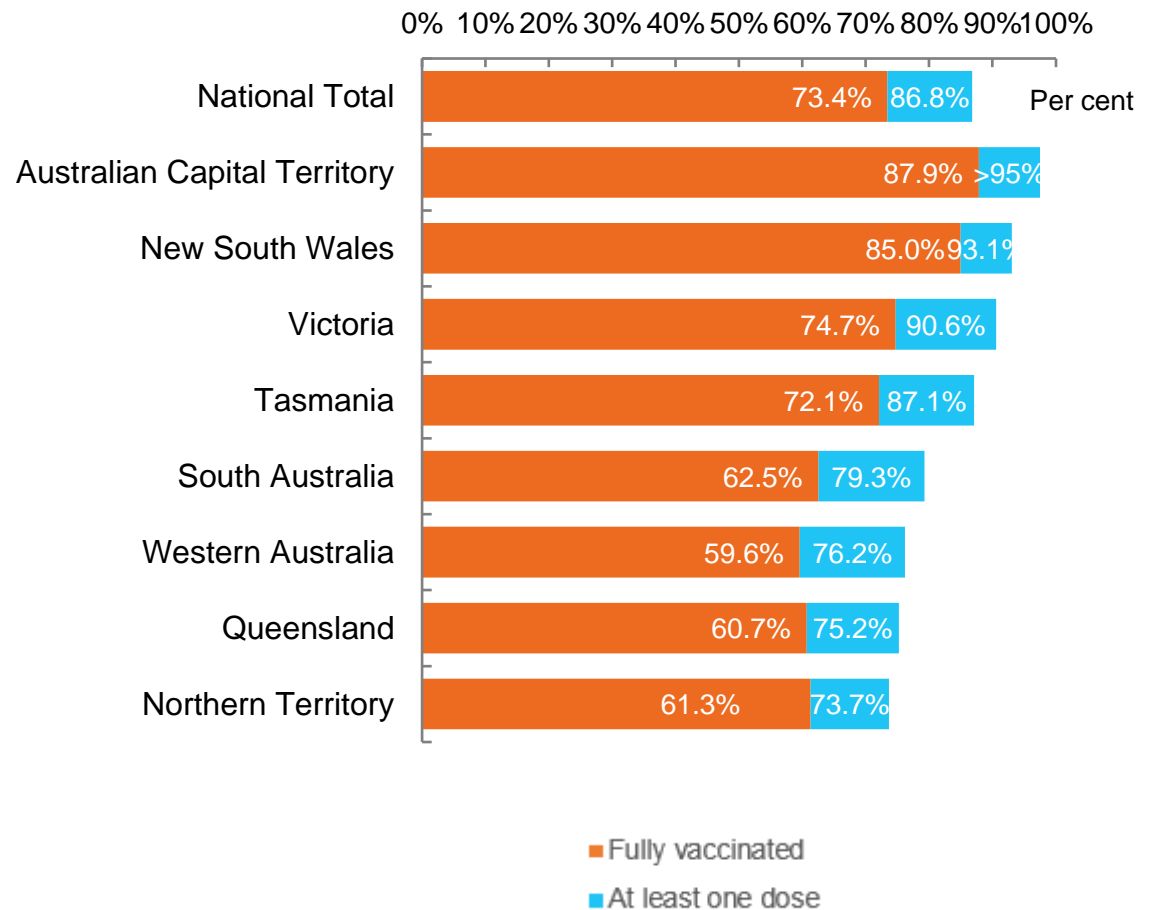
Data as at:  
24 Oct 2021

Australia's COVID-19  
Vaccine Roadmap

Cumulative total doses administered vs state populations\*



First and Second Doses by state of residence



\*Not an indication of percentage vaccinated, numbers will exceed 100 due to multiple doses required per person of the population



# Aboriginal and Torres Strait Islander peoples

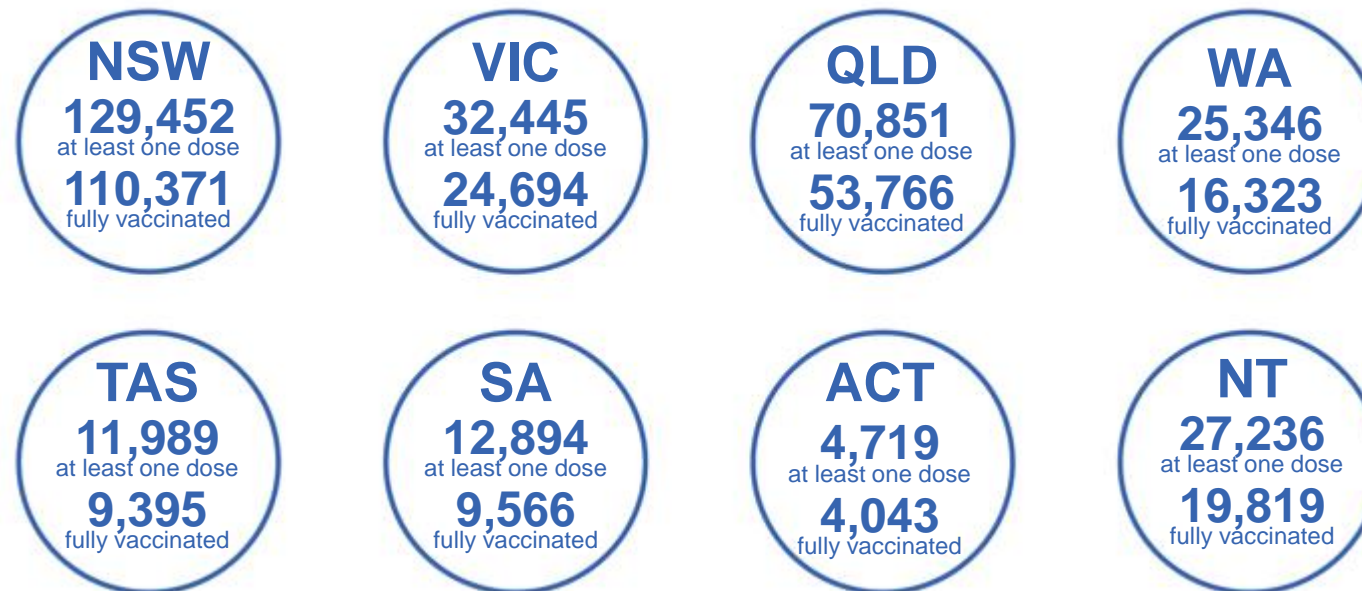
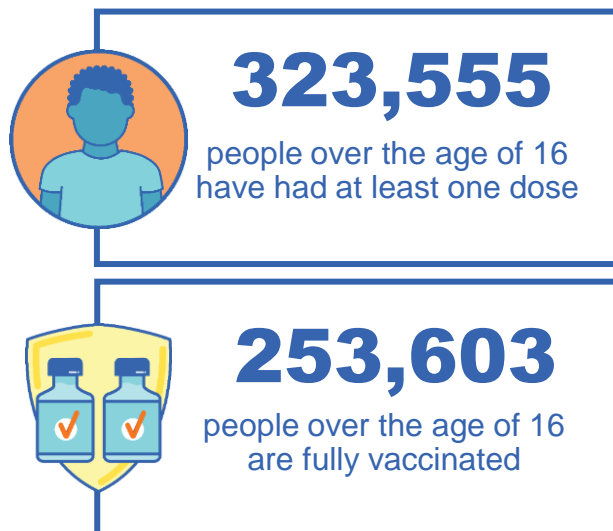
## Number of people vaccinated

Data as at:  
24 Oct 2021  
Updated weekly

Australia's COVID-19  
Vaccine Roadmap

### 169 Aboriginal community controlled health services (ACCHS)

0#	50	26	39	12	3	21	18
<b>ACT</b>	<b>NSW</b>	<b>NT</b>	<b>QLD</b>	<b>SA</b>	<b>TAS</b>	<b>VIC</b>	<b>WA</b>



**8,623** people with at least one dose  
**5,626** people fully vaccinated

residing in other territories or with missing residential information

Source: Australian Immunisation Register

\*Identifying as Aboriginal and Torres Strait Islander is optional and the estimated population may be under reported.

\*\*Includes all Aboriginal and Torres Strait Islander peoples who have received a vaccination, not limited to those administered in an ACCHS setting

\*\*\*Updated weekly.

#ACCHS in the ACT are currently operating as a Commonwealth Vaccine Clinics so not included to avoid double counting



Data as at:  
24 Oct 2021

# Commonwealth primary care



## Primary care vaccine administration sites

<b>5,592</b>	<b>137</b>	<b>169</b>	<b>3,408</b>
GPs	CVCs	ACCHS	Pharmacies



**19,023,314** total vaccine doses administered primary care settings as at 24 October  
**+ 45,639** recorded in the last 24 hours

## Primary care vaccinations by provider type

	Doses administered	Daily increase	7 day increase
General Practice* includes other Commonwealth	17,567,483	39,256	862,066
Pharmacy	1,455,831	6,383	182,688



**106,863** doses administered to persons residing in other territories or with missing residential information

\*General practice includes Commonwealth Vaccination Clinics, Aboriginal Community Health Centres, Royal Flying Doctor Service and other Commonwealth vaccination facilities

Source: Australian Immunisation Register

Data as at:  
24 Oct 2021

# Commonwealth aged care and disability doses administered



**1,103,510** (+ 2,848 last 24 hours)

Total vaccine doses administered in aged care and disability facilities as at 24 October

Number of doses administered as part of the Commonwealth aged and disability care rollout

**NSW**  
**508,932**  
(+168 daily increase)

**VIC**  
**195,520**  
(+158 daily increase)

**QLD**  
**209,890**  
(+1,958 daily increase)

**WA**  
**69,315**  
(+428 daily increase)

**TAS**  
**16,947**  
(+4 daily increase)

**SA**  
**59,519**  
(+90 daily increase)

**ACT**  
**12,990**  
(+5 daily increase)

**NT**  
**5,827**  
(+5 daily increase)

**24,570**

doses administered to persons residing in other territories or with missing residential information

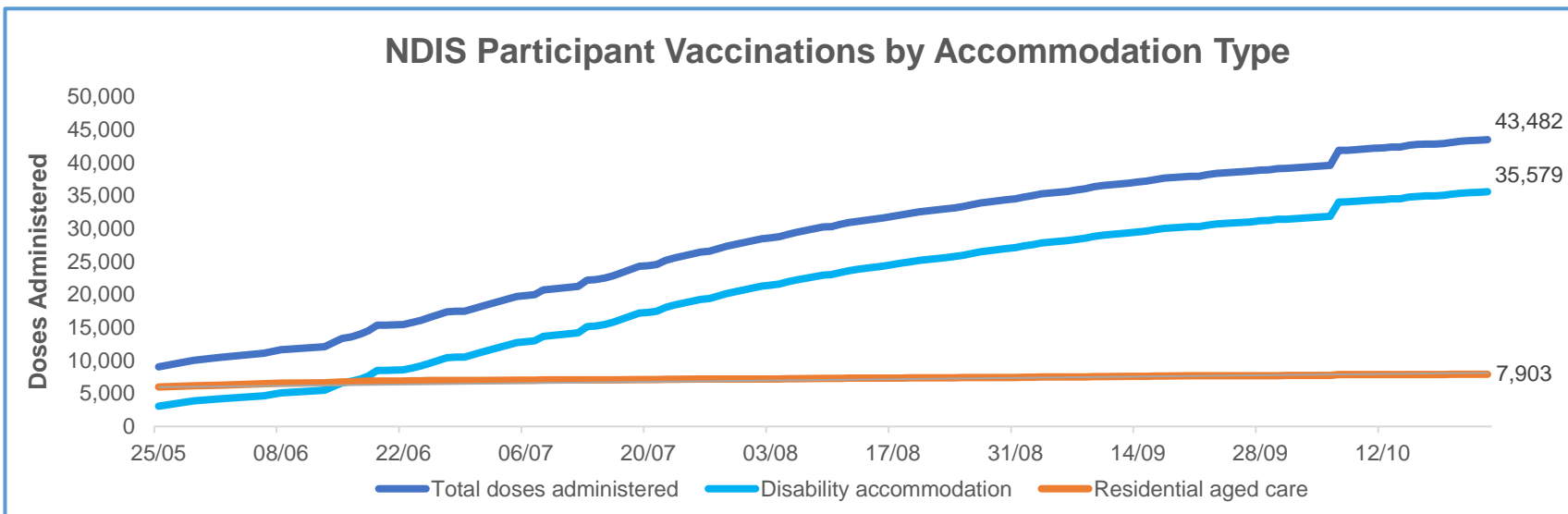
\*Sourced from the Australian Immunisation Register. Includes all persons vaccinated at participating residential aged care, disability and related industry settings.

\*\*State level breakdown indicates the residential location and may not align to the state in which the vaccination occurred.

Data as at:  
24 Oct 2021\*

# Vaccination rate of people with disability and the disability workforce

## Phase 1a – People with disability living in shared accommodation



	Total people with at least one dose	People fully vaccinated	Total number of individuals in cohort	Total doses administered	% People with at least one dose	% People fully vaccinated
NDIS participants living in shared accommodation **	22,571	20,911	27,603	43,482	81.8%	75.8%
NDIS screened workers ***	176,834	157,125	217,088	333,959	81.5%	72.4%



\* Updates are available Monday to Friday on participants, and bi-weekly for workers, numbers may be up to four days old.

\*\* Shared accommodation means two or more people with disability living in shared residential accommodation and NDIS participants living in Residential Aged Care accommodation as per the eligibility criteria of Phase 1a.

\*\*\* Total number of workers within the NDIS Commission Worker Screening database who have ever been successfully screened and linked to an NDIS registered provider or participant.

Source: Linkage between National Disability Insurance Agency data, NDIS Quality and Safeguards Commission data and the Australian Immunisation Register.

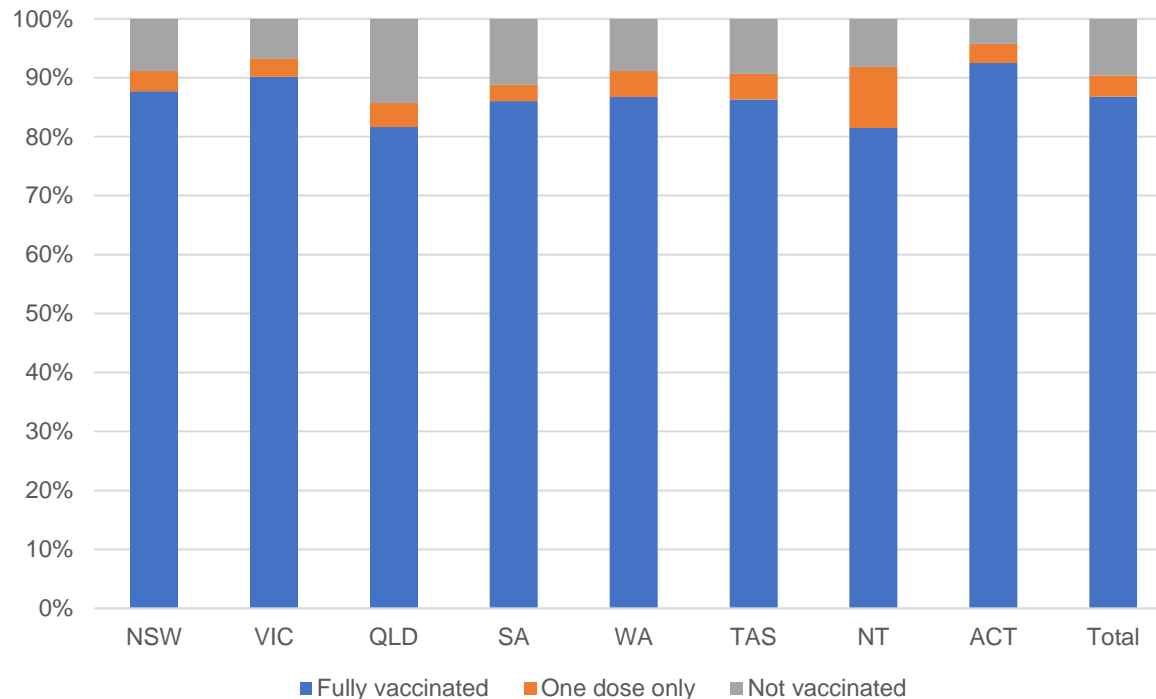
## Residential aged care vaccination rollout



Australia's COVID-19 Vaccine Roadmap

Data as at:  
24 Oct 2021

### Aged care resident vaccinations



### Aged care worker vaccinations

Jurisdictions	Total workers with at least one dose	Workers fully vaccinated	% Workers with at least one dose	% Workers fully vaccinated
NSW	78,564	74,407	99.9%	94.6%
VIC	71,312	65,652	99.7%	91.8%
QLD	48,290	42,808	99.9%	88.6%
SA	27,250	25,005	100.0%	91.8%
WA	23,515	20,213	99.8%	85.8%
TAS	7,623	6,832	100.0%	89.6%
NT	819	764	99.3%	92.6%
ACT	2,952	2,814	99.9%	95.3%
Total	260,325	238,495	99.8%	91.5%

Source: My Aged Care Portal staff vaccination progress

\*\*Resident vaccination information is reported manually by service providers

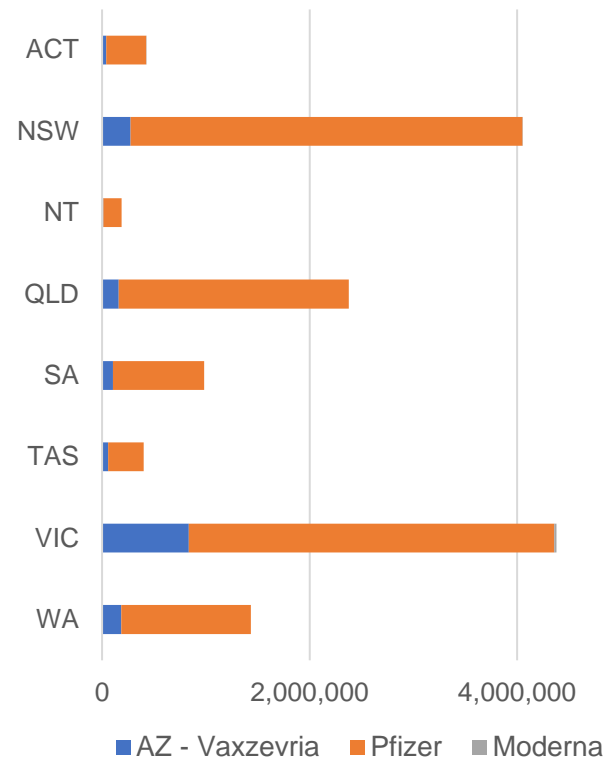
\*Status updates are provided by facilities at least once per week. Reporting is updated Monday to Friday to encompass different facility updates being made on different days.

Data is sourced directly from Aged Care Service Providers and is not drawn or closely aligned with data from AIR due to inconsistencies and potential lags in uploading of records.

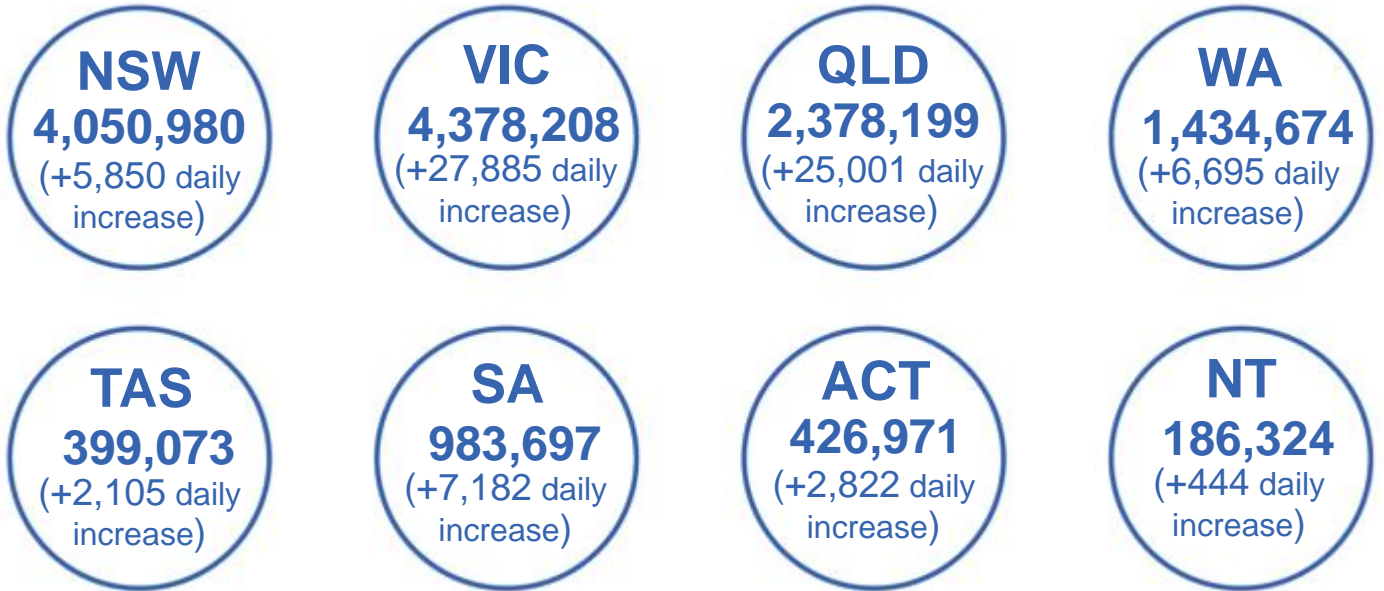
Data as at:  
24 Oct 2021

# Jurisdiction administered

Total vaccine doses administered in State and Territory clinics as at 24 October



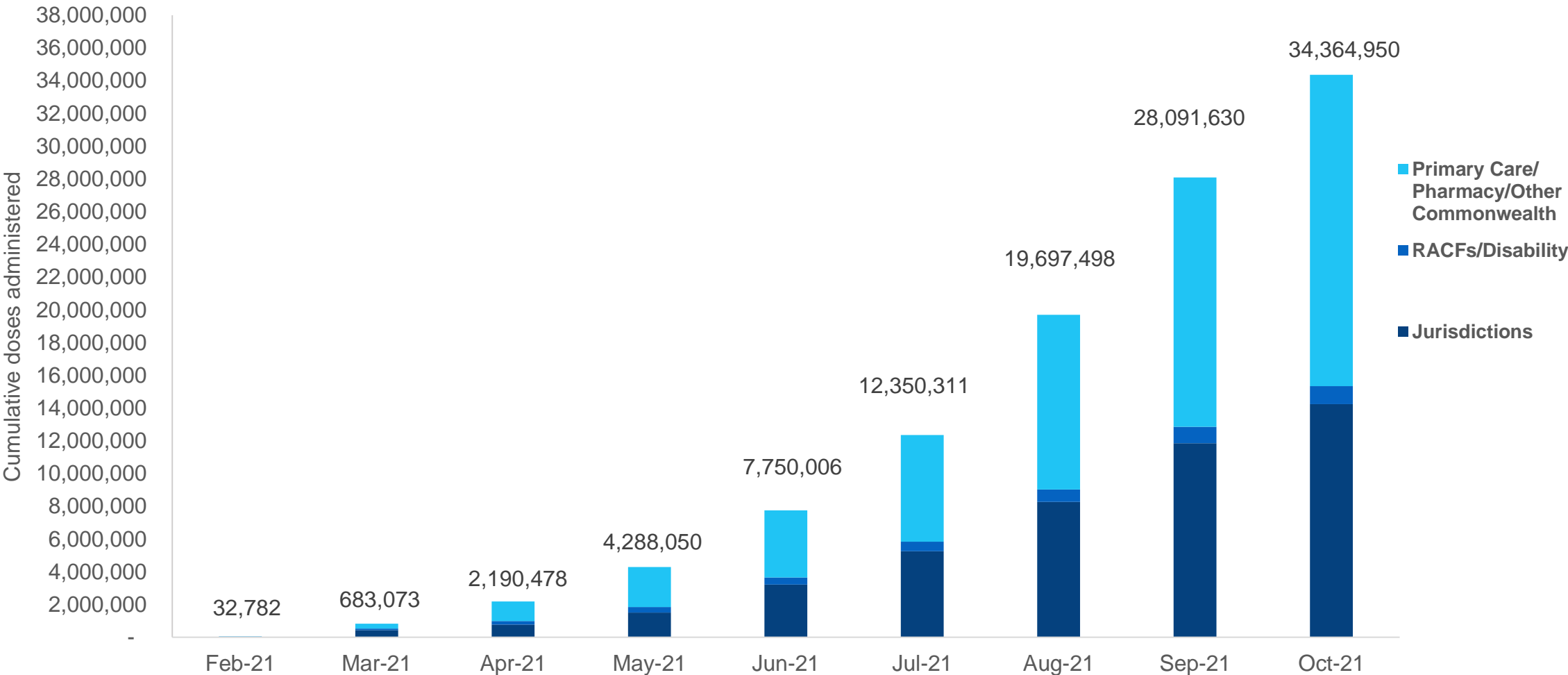
**14,238,126** total vaccine doses administered  
in State and Territory clinics as at 24 October  
+ **77,984** recorded in the last 24 hours  
+ **647,158** recorded in the last 7 days



\*Sourced from the Australian Immunisation Register and self-reported data. Numbers are calculated as difference in daily cumulative reported numbers to allow for historical corrections in all self-reported data sources.

# Cumulative doses administered by channel

Data as at:  
24 Oct 2021



Source: Australian Immunisation Register

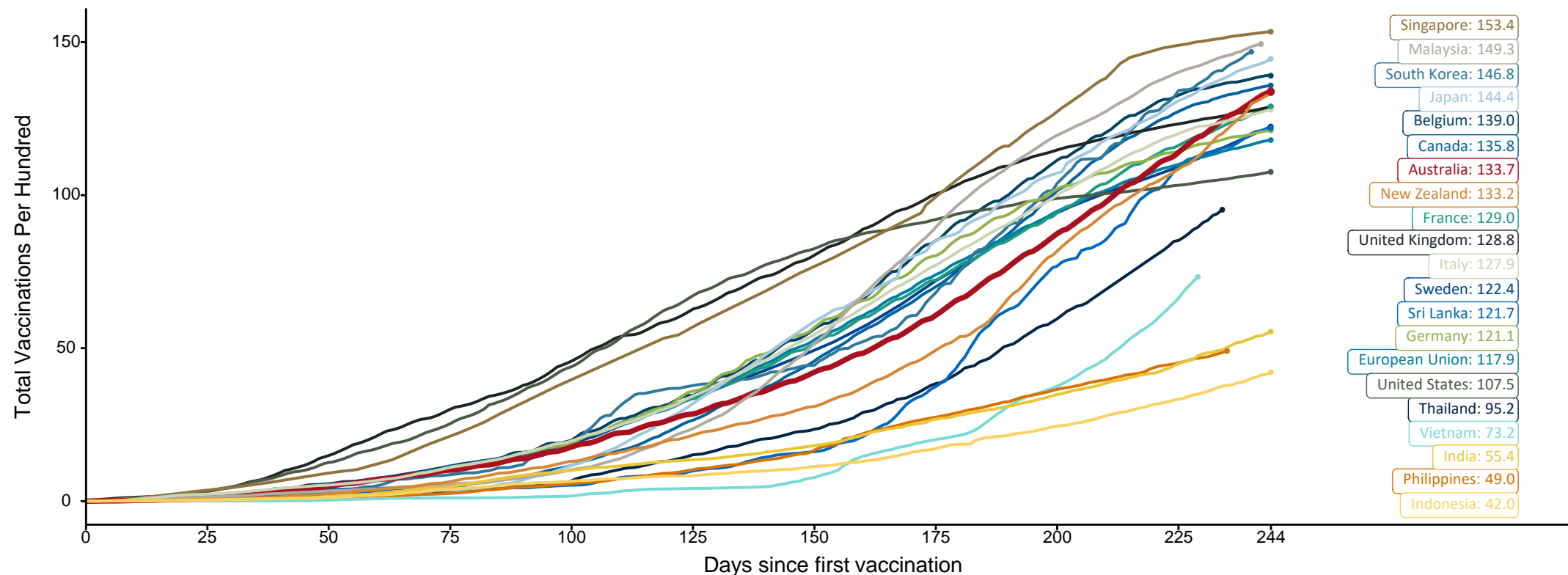


# Doses at equivalent stages of rollout (Day 244)

Data as at:  
24 Oct 2021

The x-axis is truncated at the length of Australia's vaccination program. Countries with intermittent reporting have had their doses per 100 imputed to Australia's current stage of rollout. Israel excluded as it is beyond scale of the graph.

Cumulative doses administered (24 Oct): **34,364,950**



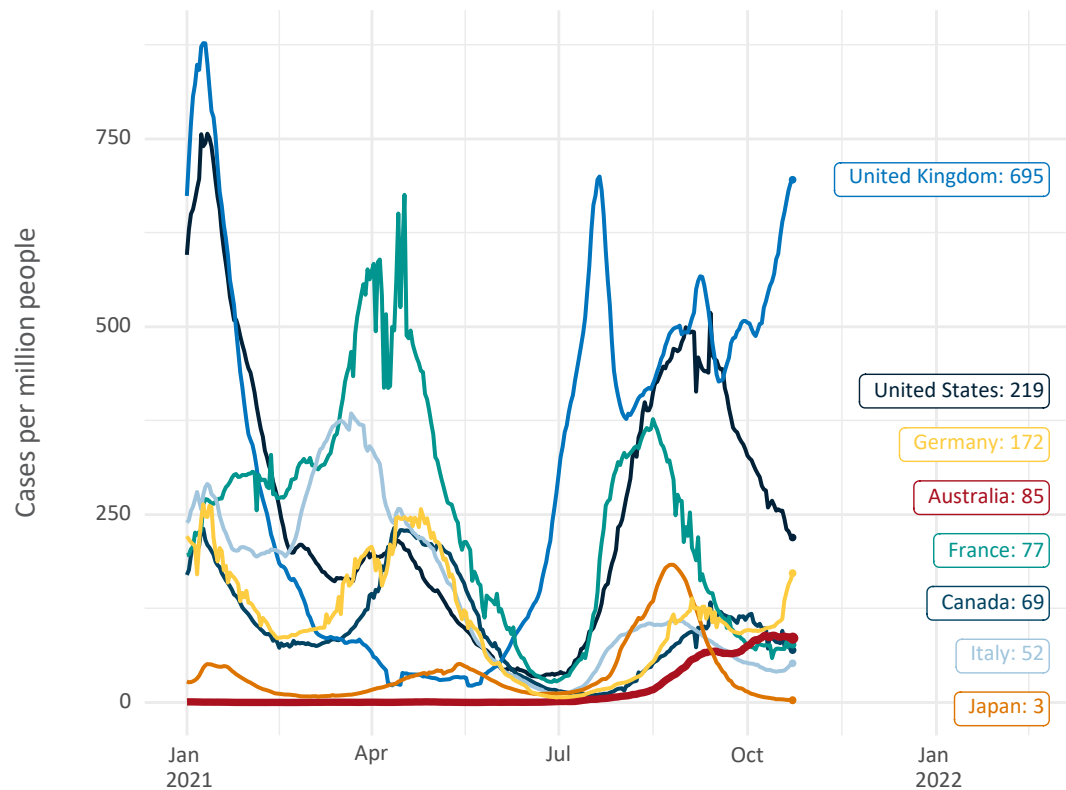
Note: From 15 September 2021, data for Australia includes all doses administered to people 12 and over. Prior to 15 September, data was for 16 and over  
Source: Department of Health (Australia), Our World in Data (international)  
Latest data: 24 October



# International data – COVID-19

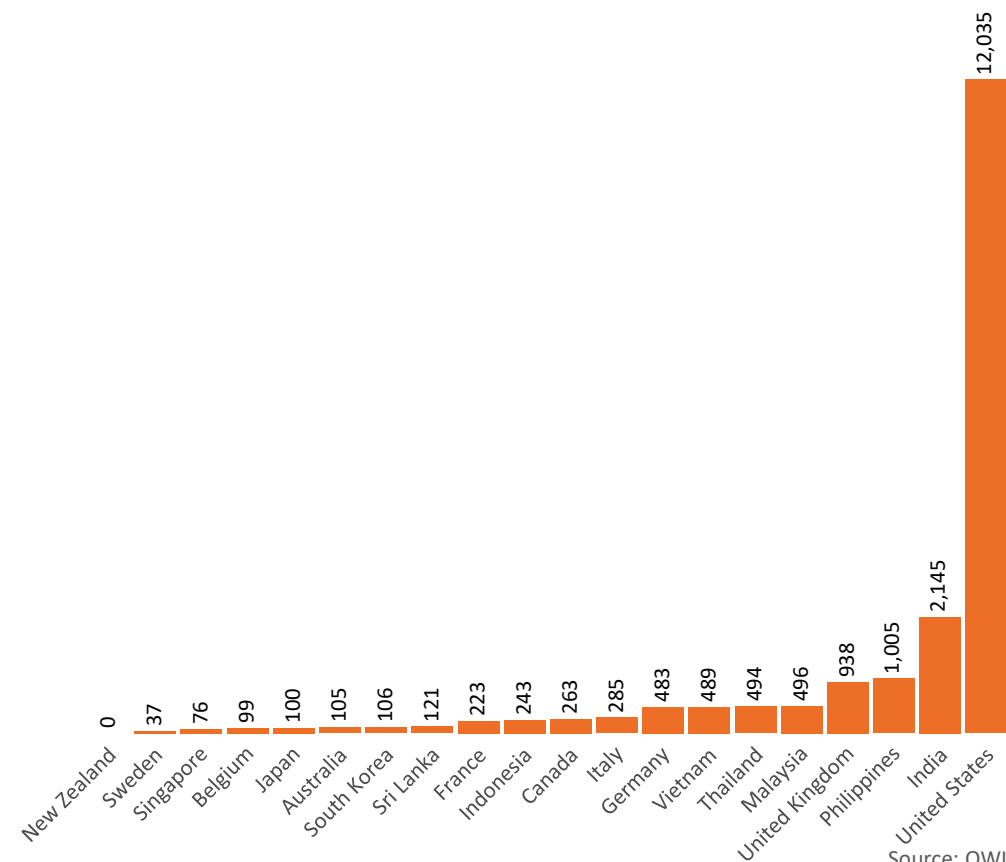
Data as at:  
24 Oct 2021

New daily cases per million in 2021, Australia and G7 countries  
Smoothed - 7 day average



Source: OWID  
Data downloaded: 25 Oct 2021 09:34  
Latest data: 23 Oct 2021

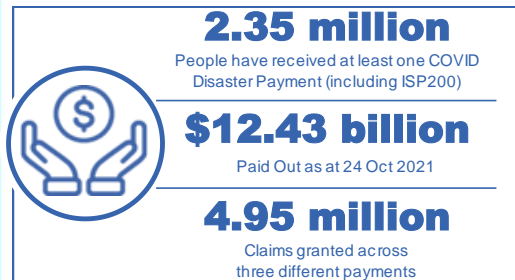
COVID-19 deaths in past 7 days - Australia and select countries



Source: OWID  
Data downloaded: 25 Oct 2021 09:34  
Latest data: 23 Oct 2021

Data as at midnight:  
24 Oct 2021

# Pandemic Response Payments (Current)



<b>COVID Disaster Payment:</b>	4.82 million claims received - 2.17 million individuals paid a total of \$12.03 billion.
<b>\$200 Income Support Payment:</b>	291,000 claims received - 179,000 individuals paid a total of \$258.62 million.
<b>Pandemic Leave Disaster Payment:</b>	105,000 claims received - 91,000 individuals paid a total of \$146.95 million.



## COVID Disaster Payment

assisting during a lockdown event in a Commonwealth hotspot.

## Income Support Payment \$200

for income support recipients who lost at least 8 hours of work.

## Pandemic Leave Disaster Payment

for those who have to self-isolate, quarantine or care.

For more information visit:  
[servicesaustralia.gov.au](https://servicesaustralia.gov.au)

## CURRENT COVID-19 DISASTER PAYMENTS

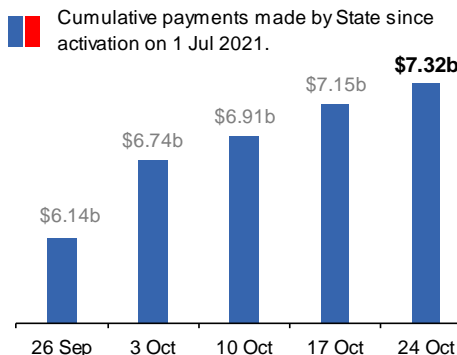
### New South Wales

Active lockdown since 24 Jun  
Partial reopening from 10 Oct

**1.08m people have received at least one COVID Disaster Payment.**

**\$7.32b paid out as at 24 Oct 2021.**

**\$170m paid in initial and reoccurring payments in the week ending 24 Oct 2021.**



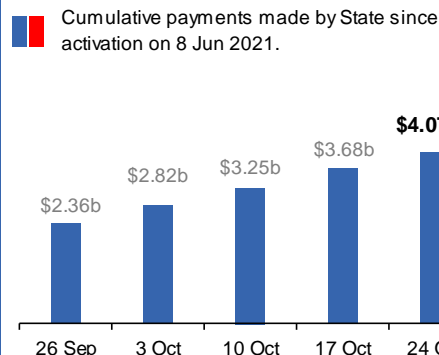
### Victoria

Active lockdown (#6) since 6 Aug

**730,000 people have received at least one COVID Disaster Payment.**

**\$4.07b paid out as at 24 Oct 2021.**

**\$397m paid in initial and reoccurring payments in the week ending 24 Oct 2021.**



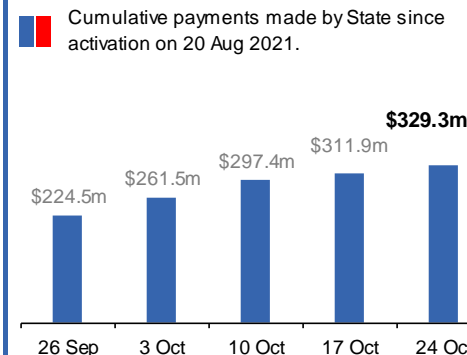
### Australian Capital Territory

Active lockdown since 12 Aug  
Partial reopening from 14 Oct

**65,000 people have received at least one COVID Disaster Payment.**

**\$329.3m paid out as at 24 Oct 2021.**

**\$17m paid in initial and reoccurring payments in the week ending 24 Oct 2021.**

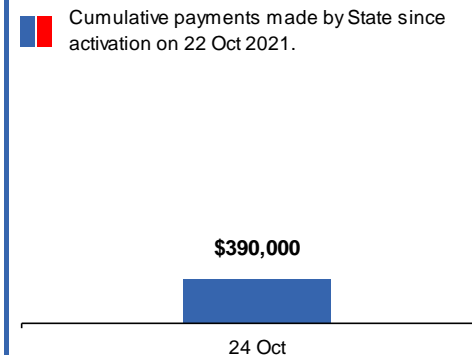


### Tasmania

Lockdown from 15 Oct to 18 Oct  
Claiming period ends 12 Nov

**637 people have received at least one COVID Disaster Payment.**

**\$390,000 paid out as at 24 Oct 2021.**



# Pandemic Response Payments (Closed Events)

Data as at midnight:  
24 Oct 2021

## CLOSED COVID-19 DISASTER PAYMENTS


### Northern Territory

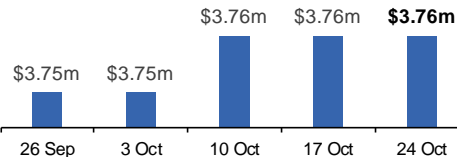
Lockdown from 18 – 20 Jul  
Claiming period ended 13 Sep

**5,804 people have received at least one COVID Disaster Payment.**

**\$3.76m paid out as at 24 Oct 2021.**

**\$4,000 paid in initial payments in the week ending 24 Oct 2021.**

 Cumulative payments made by State since activation on 25 Aug 2021.




### Queensland

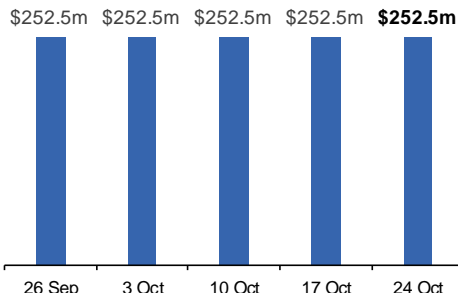
Lockdown from 31 Jul – 11 Aug  
Claiming period ended 28 Aug

**196,000 people have received at least one COVID Disaster Payment.**

**\$252.5m paid out as at 24 Oct 2021.**

**\$19,000 paid in initial and reoccurring payments in the week ending 24 Oct 2021.**

 Cumulative payments made by State since activation on 7 Aug 2021.




### South Australia

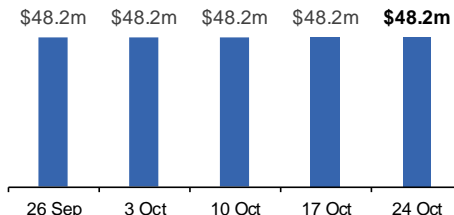
Lockdown from 21 – 27 Jul  
Claiming period ended 17 Aug

**86,000 people have received at least one COVID Disaster Payment.**

**\$48.2m paid out as at 24 Oct 2021.**

**\$1,000 paid in initial payments in the week ending 24 Oct 2021.**

 Cumulative payments made by State since activation on 28 Jul 2021.



# Administration and Utilisation

## Doses as at Week 35

	Ordered	Available	Administered	Available minus Administered	Estimated Dose Utilisation %
	Up to Week 35	Delivered up to Week 34 including redistributions	Up to Week 35		(see note)
NSW	4,762,580	4,659,620	4,050,980	608,640	97%
VIC	4,844,144	4,608,824	4,378,208	230,616	Fully utilised
QLD	3,155,080	2,702,840	2,378,199	324,641	98%
WA	1,630,408	1,466,068	1,434,674	31,394	Fully utilised
SA	1,291,410	1,122,010	983,697	138,313	98%
TAS	426,640	389,200	399,073	-	Fully utilised
NT	258,084	245,756	186,324	59,432	86%
ACT	453,716	411,068	426,971	-	Fully utilised
Jurisdiction delivered total	16,822,062	15,605,386	14,238,126	1,367,260	Fully utilised
Commonwealth Aged Care & Disability	1,072,392	1,068,324	1,103,510	-	N/A
Commonwealth Primary Care & Other	25,520,458	24,542,518	19,023,314	5,519,204	88%
Total	43,414,912	41,216,228	34,364,950	6,851,278	93%

### About this data

- Ordered – Total doses delivered to sites. Based on logistics provider data. This figure includes doses allocated for administration in the coming week.
- Available – total doses that could have been administered to date, less doses re-distributed from States & Territories to Primary Care or Aged Care & Disability (i.e. does not include those deliveries recently received, and intended for use in the coming week).
- Administered – Doses administered as at 24 October 2021.
- The dose utilisation is calculated based on the total doses administered and a small % wastage in line with international standards in relation to total available doses.
- For Aged Care & Disability, the doses available for administration is for the full period (Weeks 1-35).
- Aged Care & Disability utilisation is not provided as the in-reach rollout is demand-based, with vaccines ordered based on resident numbers.