



Australian Government
Operation COVID Shield

COVID-19 Vaccine Roll-out

24 October 2021

Data as at:
23 Oct 2021

Total vaccine doses



34,238,479 total vaccine
doses administered nationally as at 23 October
+194,297 recorded in the last 24 hours



17,866,623

people have had at least one
dose

86.6%

of people over the age of 16
have had at least one dose



15,070,088

people are fully vaccinated

73.1%

of people over the age of 16 are
fully vaccinated

NSW
12,099,297
(+39,116 daily
increase)

VIC
9,372,914
(+77,425 daily
increase)

QLD
5,842,465
(+33,473 daily
increase)

WA
2,964,850
(+19,346 daily
increase)

TAS
715,403
(+3,495 daily
increase)

SA
2,082,875
(+14,214 daily
increase)

ACT
852,293
(+6,385 daily
increase)

NT
308,382
(+843 daily
increase)

*Administration state breakdown indicates state in which a vaccine was administered

**Overall dose count includes instances of more than two doses per person in a small number of cases.

Source: Australian Immunisation Register

Data as at:
23 Oct 2021

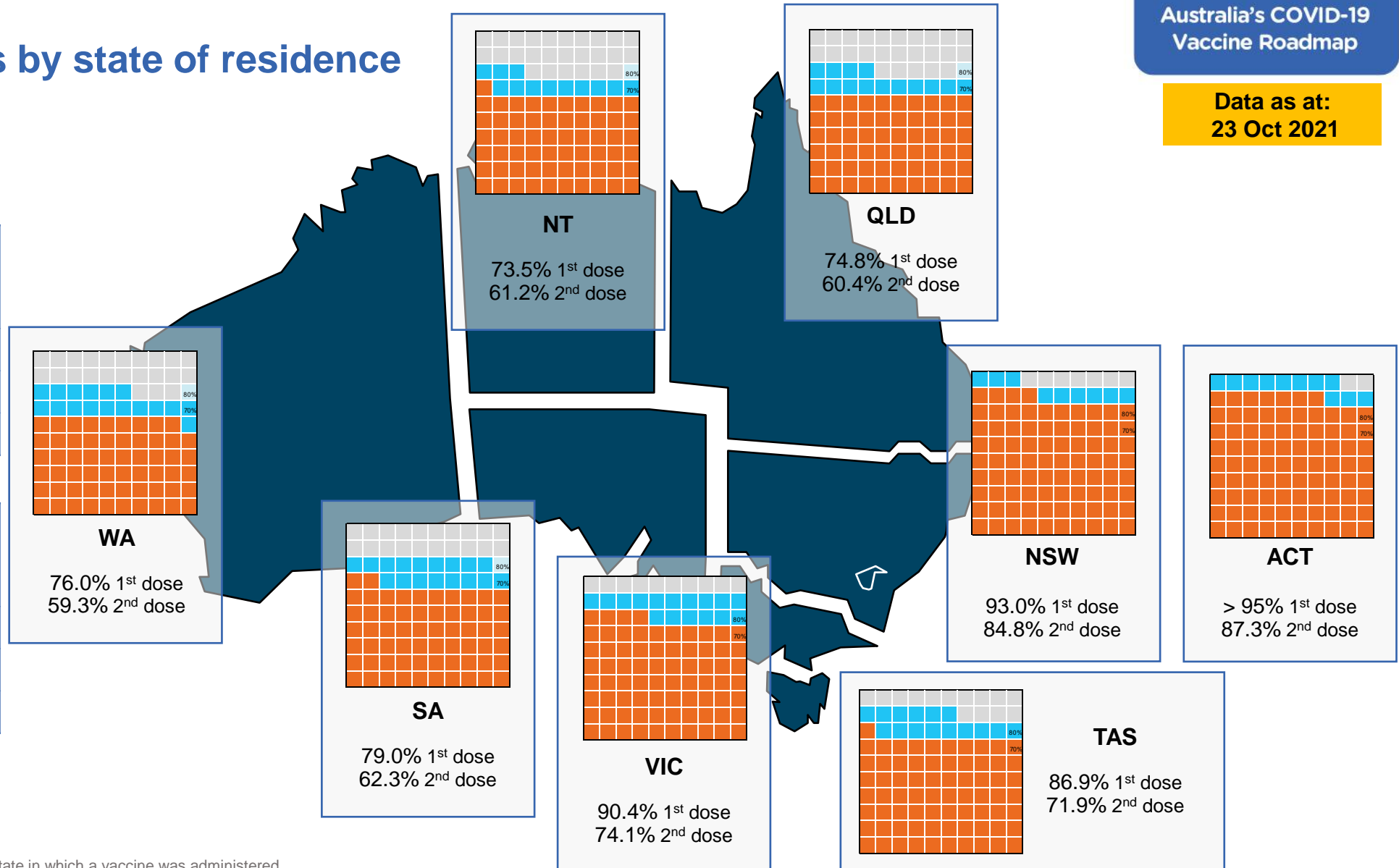
Vaccinations by state of residence

First doses

| Age | Today | 4 weeks ago | 8 weeks ago |
|-----|-------|-------------|-------------|
| 16+ | 86.6% | 76.6% | 58.7% |
| 50+ | 94.2% | 88.7% | 79.3% |
| 70+ | >95% | 94.7% | 88.7% |

Fully vaccinated

| Age | Today | 4 weeks ago | 8 weeks ago |
|-----|-------|-------------|-------------|
| 16+ | 73.1% | 52.2% | 35.0% |
| 50+ | 83.0% | 70.2% | 52.0% |
| 70+ | 87.8% | 78.1% | 63.8% |



*Residential state may differ from the state in which a vaccine was administered

Commonwealth and Jurisdiction vaccine doses administered

Data as at:
23 Oct 2021



34,238,479 total vaccine
doses administered nationally as at 23 October
+ 194,297 recorded in the last 24 hours



14,160,142
doses administered by state
and territory facilities
+ 91,537
recorded in the last 24 hours



20,078,337
doses administered by
commonwealth facilities
+ 102,760
recorded in the last 24 hours
18,977,675 total vaccine doses
administered in primary care settings
1,100,662 total vaccine doses
administered in aged care and disability
settings

| NSW | Jurisdictions | Commonwealth |
|----------------|---------------|--------------|
| Cumulative | 4,045,130 | 8,054,167 |
| Daily increase | 11,851 | 27,265 |

| VIC | Jurisdictions | Commonwealth |
|----------------|---------------|--------------|
| Cumulative | 4,350,323 | 5,022,591 |
| Daily increase | 38,614 | 38,811 |

| QLD | Jurisdictions | Commonwealth |
|----------------|---------------|--------------|
| Cumulative | 2,353,198 | 3,489,267 |
| Daily increase | 17,611 | 15,862 |

| WA | Jurisdictions | Commonwealth |
|----------------|---------------|--------------|
| Cumulative | 1,427,979 | 1,536,871 |
| Daily increase | 9,067 | 10,279 |

| TAS | Jurisdictions | Commonwealth |
|----------------|---------------|--------------|
| Cumulative | 396,968 | 318,435 |
| Daily increase | 1,488 | 2,007 |

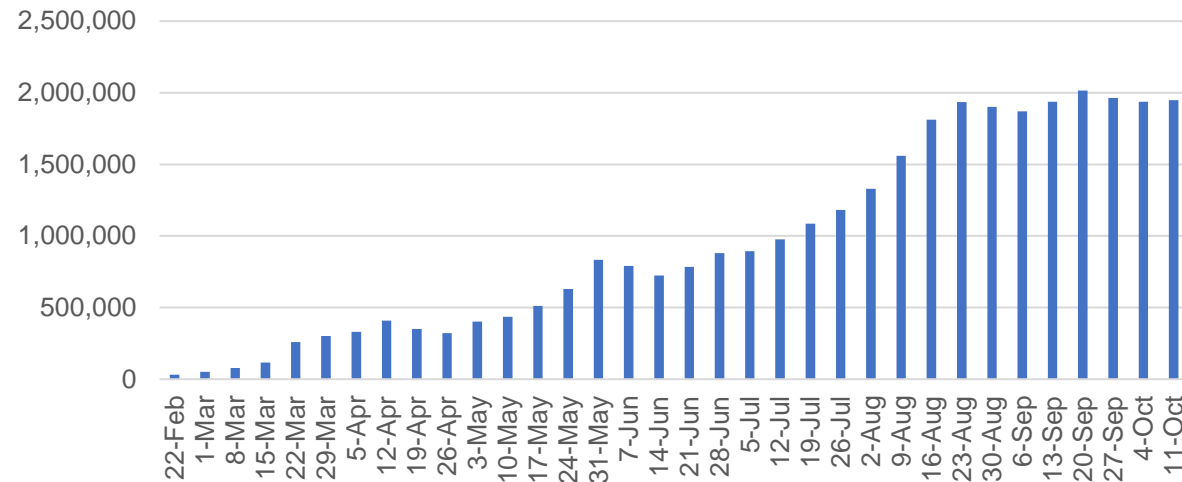
| SA | Jurisdictions | Commonwealth |
|----------------|---------------|--------------|
| Cumulative | 976,515 | 1,106,360 |
| Daily increase | 8,485 | 5,729 |

| ACT | Jurisdictions | Commonwealth |
|----------------|---------------|--------------|
| Cumulative | 424,149 | 428,144 |
| Daily increase | 3,725 | 2,660 |

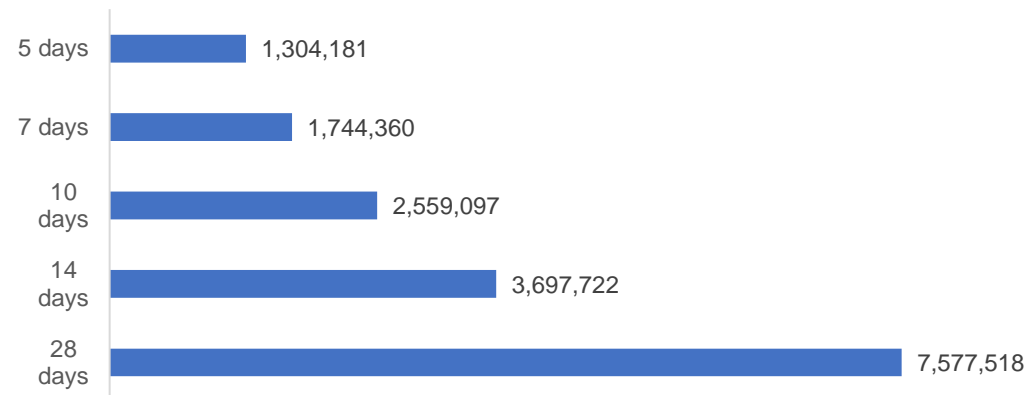
| NT | Jurisdictions | Commonwealth |
|----------------|---------------|--------------|
| Cumulative | 185,880 | 122,502 |
| Daily increase | 696 | 147 |

Vaccine milestone charts

Jabs in arms by week



Doses reported

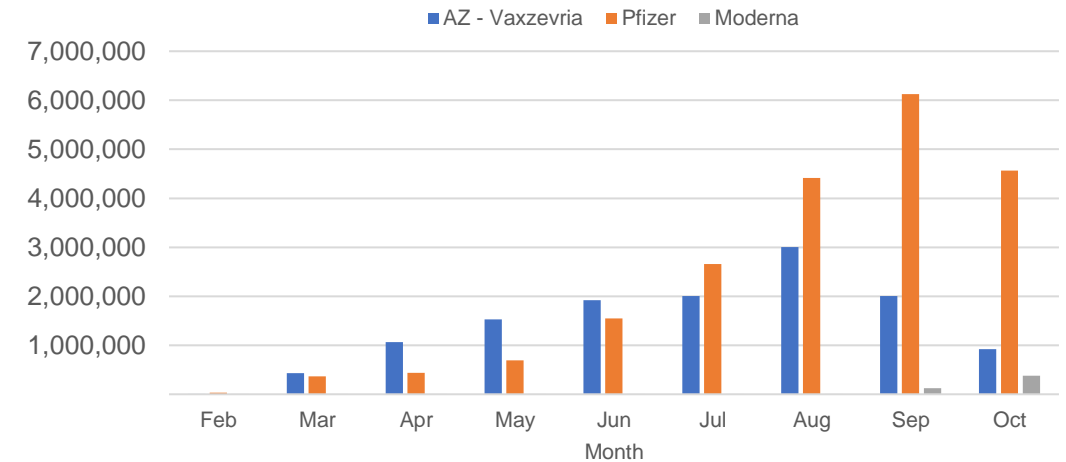


*Sourced from the Australian Immunisation Register.

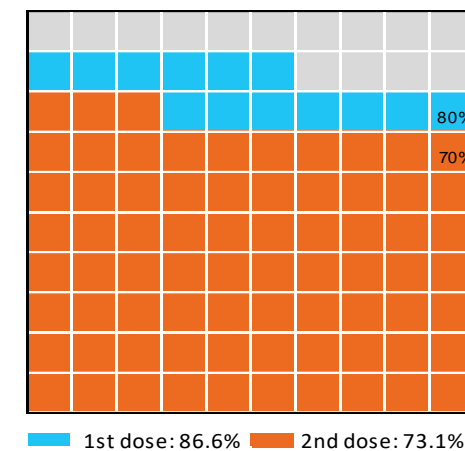
Data as at:
23 Oct 2021

Australia's COVID-19
Vaccine Roadmap

Doses by administration month and vaccine type



Eligible population percentage coverage



*Each square represents 1% of the national population.
Squares are filled as milestones are achieved.

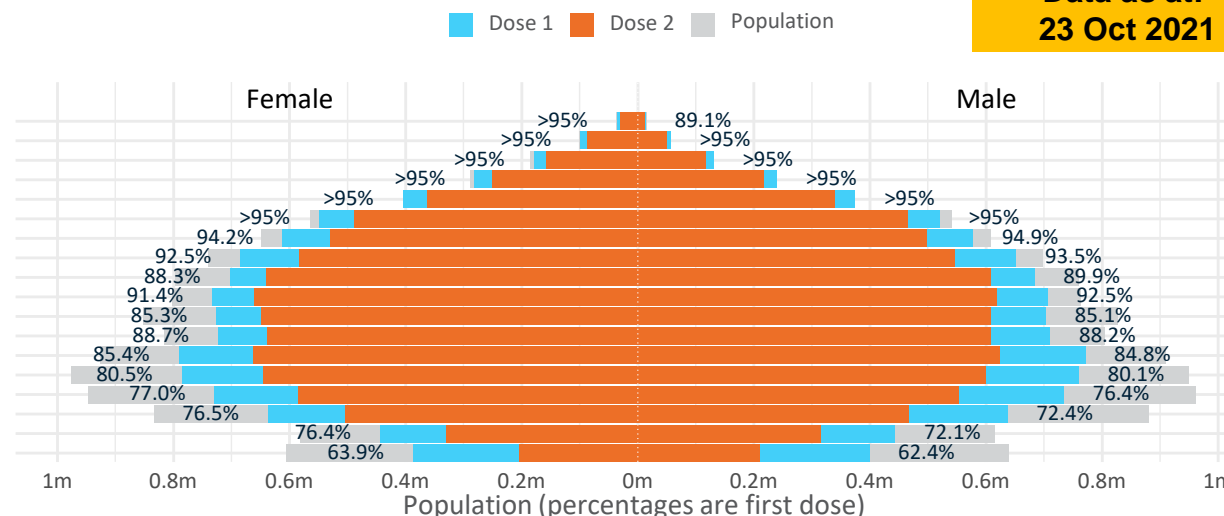
Doses by age and sex

First and second doses by age and sex

Australia's COVID-19
Vaccine Roadmap

Data as at:
23 Oct 2021

| Age | Dose 1 | Dose 2 |
|-------|-------------------|-------------------|
| 95+ | 49,621 (93.8%) | 42,846 (81.0%) |
| 90-94 | 155,409 (>95%) | 136,690 (86.3%) |
| 85-89 | 310,131 (>95%) | 274,124 (86.7%) |
| 80-84 | 521,403 (>95%) | 466,756 (88.3%) |
| 75-79 | 779,634 (>95%) | 701,650 (90.7%) |
| 70-74 | 1,070,025 (>95%) | 953,573 (86.3%) |
| 65-69 | 1,191,016 (94.7%) | 1,027,631 (81.7%) |
| 60-64 | 1,337,730 (93.1%) | 1,129,953 (78.7%) |
| 55-59 | 1,387,412 (89.2%) | 1,247,192 (80.2%) |
| 50-54 | 1,439,535 (92.0%) | 1,279,202 (81.8%) |
| 45-49 | 1,429,989 (85.3%) | 1,257,678 (75.0%) |
| 40-44 | 1,435,509 (88.6%) | 1,249,170 (77.1%) |
| 35-39 | 1,565,945 (85.3%) | 1,290,093 (70.3%) |
| 30-34 | 1,552,702 (80.7%) | 1,248,749 (64.9%) |
| 25-29 | 1,472,984 (77.3%) | 1,144,442 (60.0%) |
| 20-24 | 1,279,751 (74.7%) | 974,618 (56.9%) |
| 16-19 | 887,827 (74.2%) | 645,721 (54.0%) |
| 12-15 | 785,970 (63.2%) | 414,144 (33.3%) |



| | AUS | ACT | NSW | NT | QLD | SA | TAS | VIC | WA |
|---------------------------|-------------|---------|-----------|---------|-----------|-----------|---------|-----------|-----------|
| 16 and over - dose 1 | 17,866,623 | 339,453 | 6,107,861 | 140,129 | 3,078,176 | 1,137,931 | 382,646 | 4,890,860 | 1,607,863 |
| 16 and over - dose 2 | 15,070,088 | 300,263 | 5,568,565 | 116,678 | 2,484,366 | 896,786 | 316,598 | 4,008,186 | 1,254,415 |
| 16 and over - population | 20,619,959* | 344,037 | 6,565,651 | 190,571 | 4,112,707 | 1,440,400 | 440,172 | 5,407,574 | 2,114,978 |
| 16 and over % with dose 1 | 86.65% | >95% | 93.03% | 73.53% | 74.85% | 79.00% | 86.93% | 90.44% | 76.02% |
| 16 and over % with dose 2 | 73.08% | 87.28% | 84.81% | 61.23% | 60.41% | 62.26% | 71.93% | 74.12% | 59.31% |
| 50 and over - dose 1 | 8,241,916 | 132,194 | 2,735,250 | 51,010 | 1,556,782 | 605,594 | 204,409 | 2,119,446 | 788,046 |
| 50 and over - dose 2 | 7,259,617 | 122,336 | 2,537,141 | 44,507 | 1,330,031 | 505,148 | 177,868 | 1,850,369 | 655,568 |
| 50 and over - population | 8,749,703 | 127,802 | 2,807,793 | 62,280 | 1,758,855 | 674,384 | 220,036 | 2,211,211 | 885,370 |
| 50 and over % with dose 1 | 94.20% | >95% | >95% | 81.90% | 88.51% | 89.80% | 92.90% | >95% | 89.01% |
| 50 and over % with dose 2 | 82.97% | >95% | 90.36% | 71.46% | 75.62% | 74.91% | 80.84% | 83.68% | 74.04% |
| 70 and over - dose 1 | 2,886,223 | 42,945 | 963,335 | 10,762 | 548,762 | 230,397 | 75,573 | 727,974 | 266,592 |
| 70 and over - dose 2 | 2,575,639 | 39,832 | 895,034 | 9,448 | 483,425 | 195,223 | 66,257 | 644,016 | 226,485 |
| 70 and over - population | 2,934,706 | 39,946 | 962,606 | 12,343 | 577,767 | 240,514 | 77,155 | 743,519 | 280,281 |
| 70 and over % with dose 1 | >95% | >95% | >95% | 87.19% | 94.98% | >95% | >95% | >95% | >95% |
| 70 and over % with dose 2 | 87.76% | >95% | 92.98% | 76.55% | 83.67% | 81.17% | 85.88% | 86.62% | 80.81% |
| 12 to 15 - dose 1 | 785,970 | 19,049 | 303,929 | 6,417 | 116,404 | 33,989 | 13,460 | 239,014 | 48,963 |
| 12 to 15 - dose 2 | 414,144 | 11,191 | 198,183 | 3,540 | 55,552 | 11,591 | 3,361 | 113,458 | 15,356 |
| 12 to 15 - population | 1,243,990 | 19,693 | 390,330 | 13,060 | 270,146 | 82,747 | 26,308 | 308,611 | 132,869 |
| 12 to 15 % with dose 1 | 63.18% | >95% | 77.86% | 49.13% | 43.09% | 41.08% | 51.16% | 77.45% | 36.85% |
| 12 to 15 % with dose 2 | 33.29% | 56.83% | 50.77% | 27.11% | 20.56% | 14.01% | 12.78% | 36.76% | 11.56% |

*National population will not equal sum of listed jurisdictions due to a small number of people counted in national population residing in some 'other' territories. Sum of state doses will not add to national total as some records are unable to be geocoded to a State or Territory.

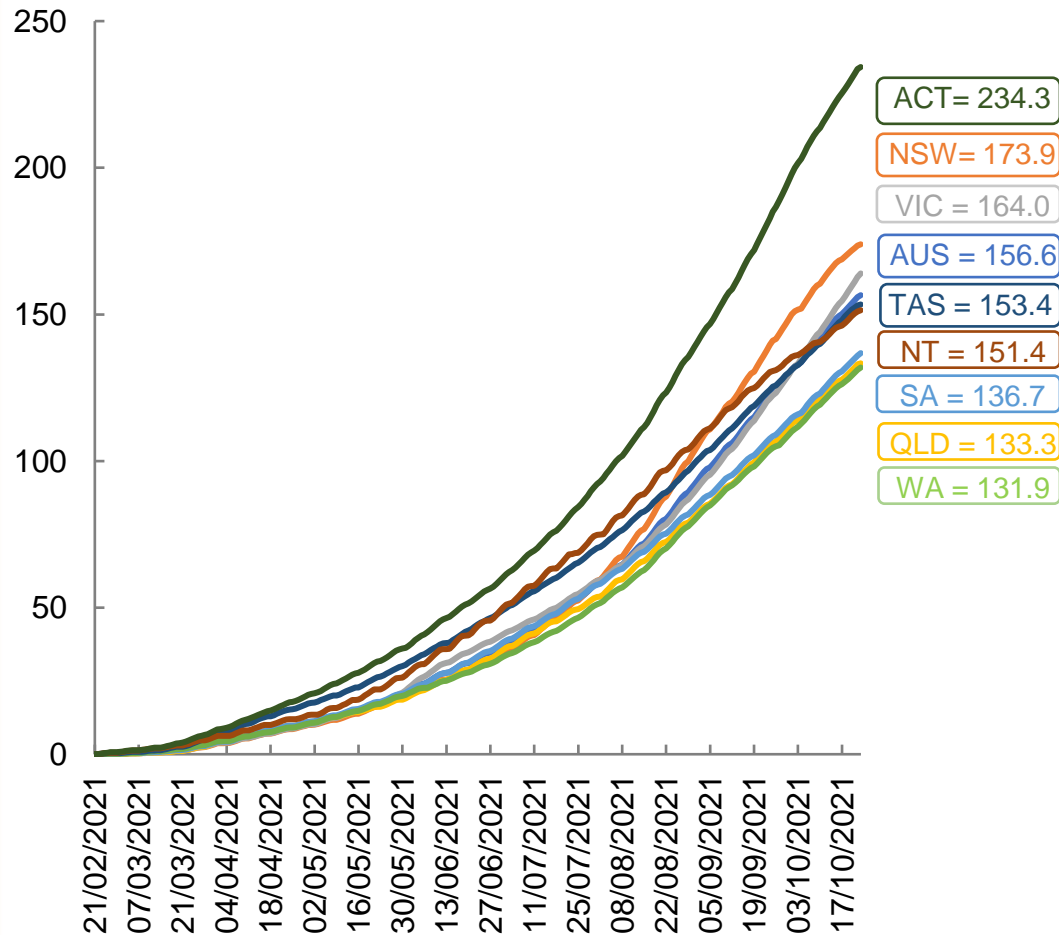
Doses sourced from Australian Immunisation Register, population from ABS ERP June 2020

Vaccinations by location

Data as at:
23 Oct 2021

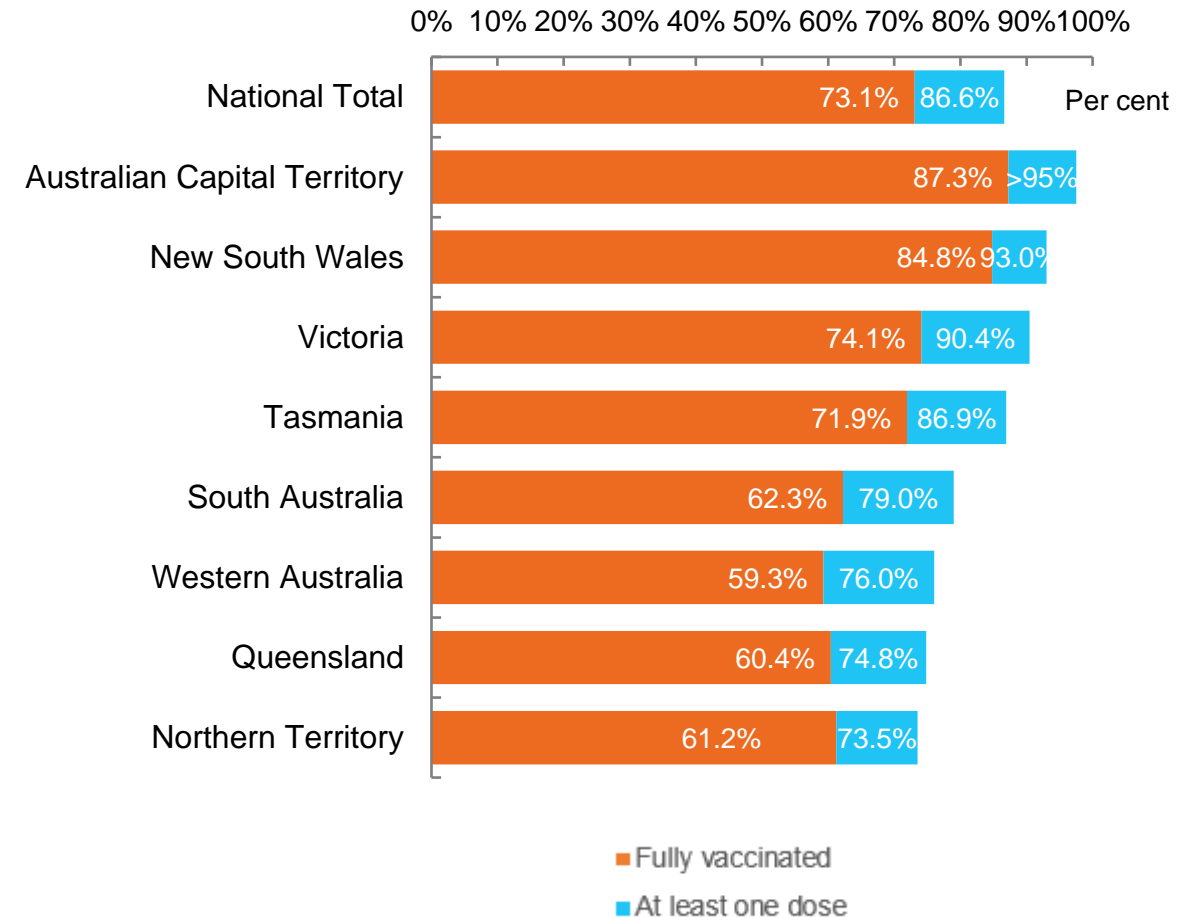
Australia's COVID-19
Vaccine Roadmap

Cumulative total doses administered vs state populations*



*Not an indication of percentage vaccinated, numbers will exceed 100 due to multiple doses required per person of the population

First and Second Doses by state of residence



Aboriginal and Torres Strait Islander peoples

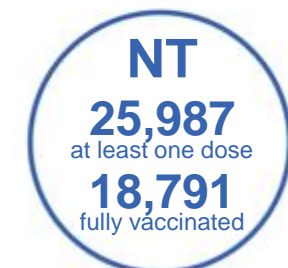
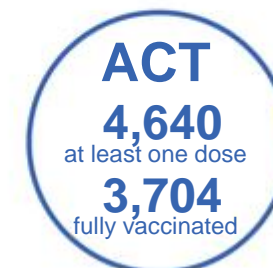
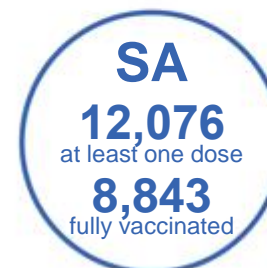
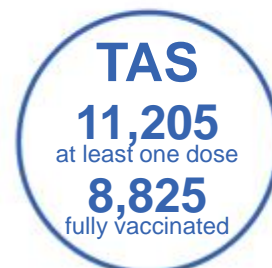
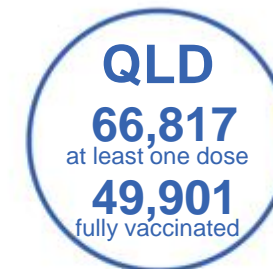
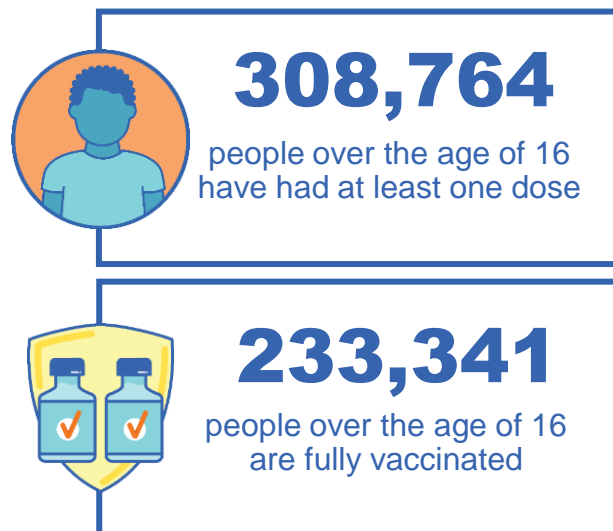
Number of people vaccinated

Data as at:
17 Oct 2021
Updated weekly

Australia's COVID-19
Vaccine Roadmap

169 Aboriginal community controlled health services (ACCHS)

| | | | | | | | |
|-----|-----|----|-----|----|-----|-----|----|
| 0# | 50 | 26 | 39 | 12 | 3 | 21 | 18 |
| ACT | NSW | NT | QLD | SA | TAS | VIC | WA |



8,219 people with at least one dose
5,239 people fully vaccinated

residing in other territories or with missing residential information
Source: Australian Immunisation Register

*Identifying as Aboriginal and Torres Strait Islander is optional and the estimated population may be under reported.

**Includes all Aboriginal and Torres Strait Islander peoples who have received a vaccination, not limited to those administered in an ACCHS setting

***Updated weekly.

#ACCHS in the ACT are currently operating as a Commonwealth Vaccine Clinics so not included to avoid double counting

Data as at:
23 Oct 2021

Commonwealth primary care



Primary care vaccine administration sites

| | | | |
|--------------|------------|------------|--------------|
| 5,574 | 137 | 169 | 3,391 |
| GPs | CVCs | ACCHS | Pharmacies |



18,977,675 total vaccine doses administered primary care settings as at 23 October
+ 99,654 recorded in the last 24 hours

Primary care vaccinations by provider type

| | Doses administered | Daily increase | 7 day increase |
|--|--------------------|----------------|----------------|
| General Practice* includes other Commonwealth | 17,528,227 | 81,462 | 872,742 |
| Pharmacy | 1,449,448 | 18,192 | 180,485 |



106,747 doses administered to persons residing in other territories or with missing residential information

*General practice includes Commonwealth Vaccination Clinics, Aboriginal Community Health Centres, Royal Flying Doctor Service and other Commonwealth vaccination facilities

Source: Australian Immunisation Register

Data as at:
23 Oct 2021

Commonwealth aged care and disability doses administered



1,100,662 (+ 3,106 last 24 hours)

Total vaccine doses administered in aged care and disability facilities as at 23 October

Number of doses administered as part of the Commonwealth aged and disability care rollout

NSW
508,764
(+498 daily increase)

VIC
195,362
(+439 daily increase)

QLD
207,932
(+1,411 daily increase)

WA
68,887
(+391 daily increase)

TAS
16,943
(+21 daily increase)

SA
59,429
(+293 daily increase)

ACT
12,985
(+29 daily increase)

NT
5,822
(+6 daily increase)

*Sourced from the Australian Immunisation Register. Includes all persons vaccinated at participating residential aged care, disability and related industry settings.

**State level breakdown indicates the residential location and may not align to the state in which the vaccination occurred.

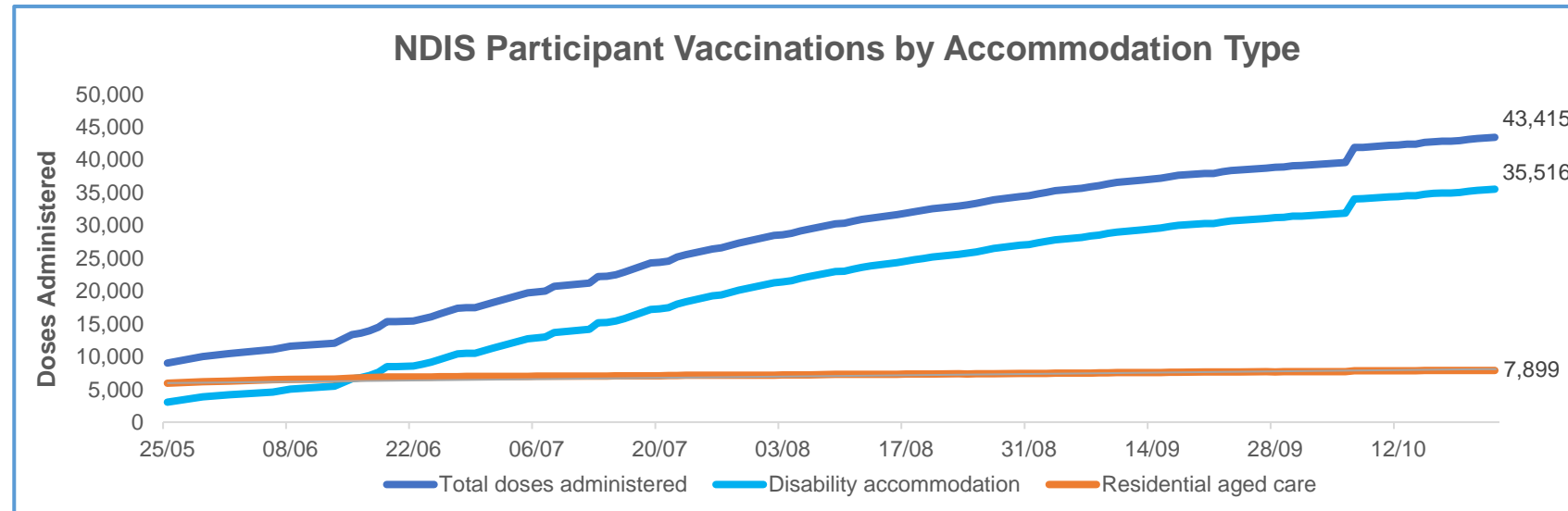
24,538

doses administered to persons residing in other territories or with missing residential information

Data as at:
23 Oct 2021*

Vaccination rate of people with disability and the disability workforce

Phase 1a – People with disability living in shared accommodation



| | Total people with at least one dose | People fully vaccinated | Total number of individuals in cohort | Total doses administered | % People with at least one dose | % People fully vaccinated |
|---|-------------------------------------|-------------------------|---------------------------------------|--------------------------|---------------------------------|---------------------------|
| NDIS participants living in shared accommodation ** | 22,547 | 20,868 | 27,603 | 43,415 | 81.7% | 75.6% |
| NDIS screened workers *** | 176,834 | 157,125 | 217,088 | 333,959 | 81.5% | 72.4% |



* Updates are available Monday to Friday on participants, and bi-weekly for workers, numbers may be up to four days old.

** Shared accommodation means two or more people with disability living in shared residential accommodation and NDIS participants living in Residential Aged Care accommodation as per the eligibility criteria of Phase 1a.

*** Total number of workers within the NDIS Commission Worker Screening database who have ever been successfully screened and linked to an NDIS registered provider or participant.

Source: Linkage between National Disability Insurance Agency data, NDIS Quality and Safeguards Commission data and the Australian Immunisation Register.

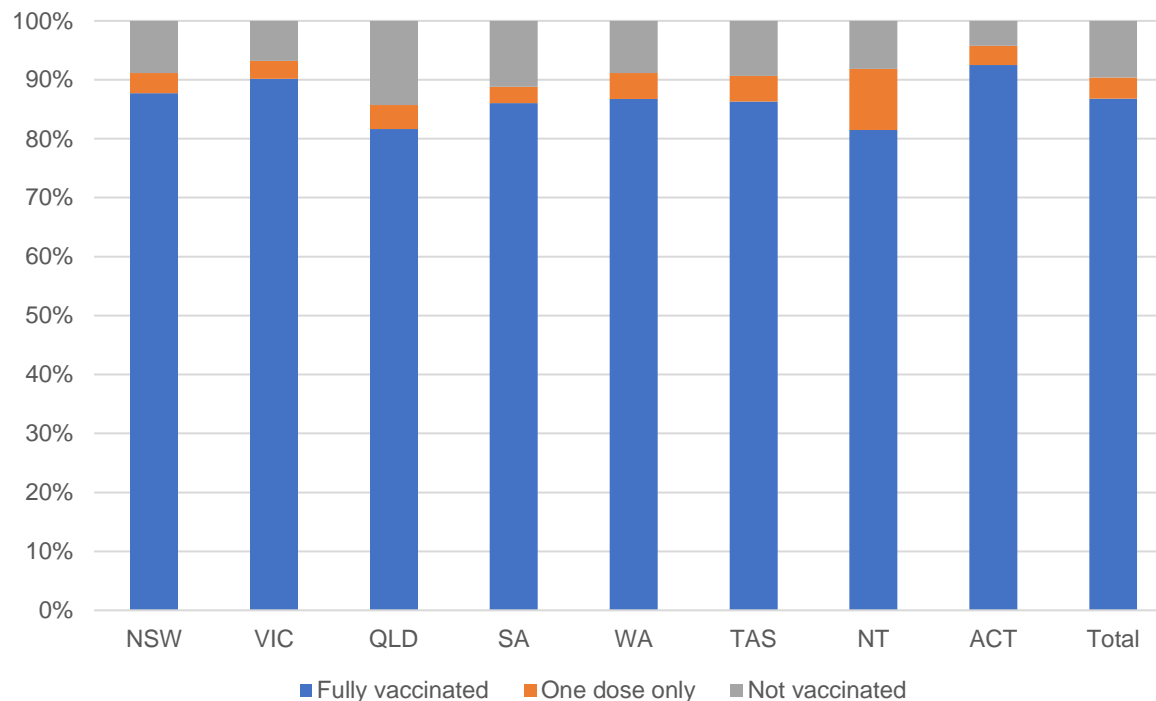
Residential aged care vaccination rollout



Australia's COVID-19 Vaccine Roadmap

Data as at:
21 October 2021

Aged care resident vaccinations



Aged care worker vaccinations

| Jurisdictions | Total workers with at least one dose | Workers fully vaccinated | % Workers with at least one dose | % Workers fully vaccinated |
|---------------|--------------------------------------|--------------------------|----------------------------------|----------------------------|
| NSW | 78,627 | 73,194 | 99.8% | 92.9% |
| VIC | 71,299 | 65,442 | 99.7% | 91.5% |
| QLD | 48,280 | 42,581 | 99.9% | 88.1% |
| SA | 27,149 | 24,876 | 99.6% | 91.3% |
| WA | 23,512 | 20,211 | 99.8% | 85.8% |
| TAS | 7,623 | 6,831 | 100.0% | 89.6% |
| NT | 819 | 764 | 99.3% | 92.6% |
| ACT | 2,961 | 2,813 | 100.0% | 95.0% |
| Total | 260,270 | 236,712 | 99.8% | 90.8% |

Source: My Aged Care Portal staff vaccination progress

**Resident vaccination information is reported manually by service providers

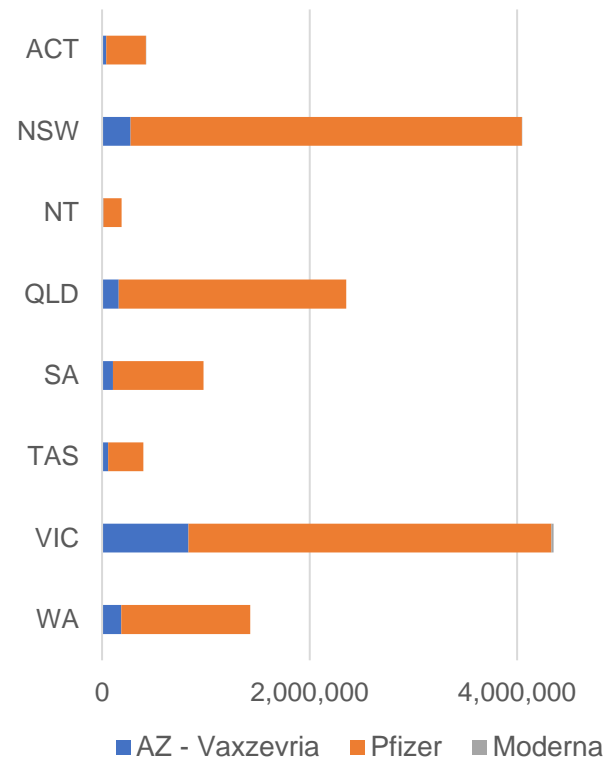
*Status updates are provided by facilities at least once per week. Reporting is updated Monday to Friday to encompass different facility updates being made on different days.

Data is sourced directly from Aged Care Service Providers and is not drawn or closely aligned with data from AIR due to inconsistencies and potential lags in uploading of records.

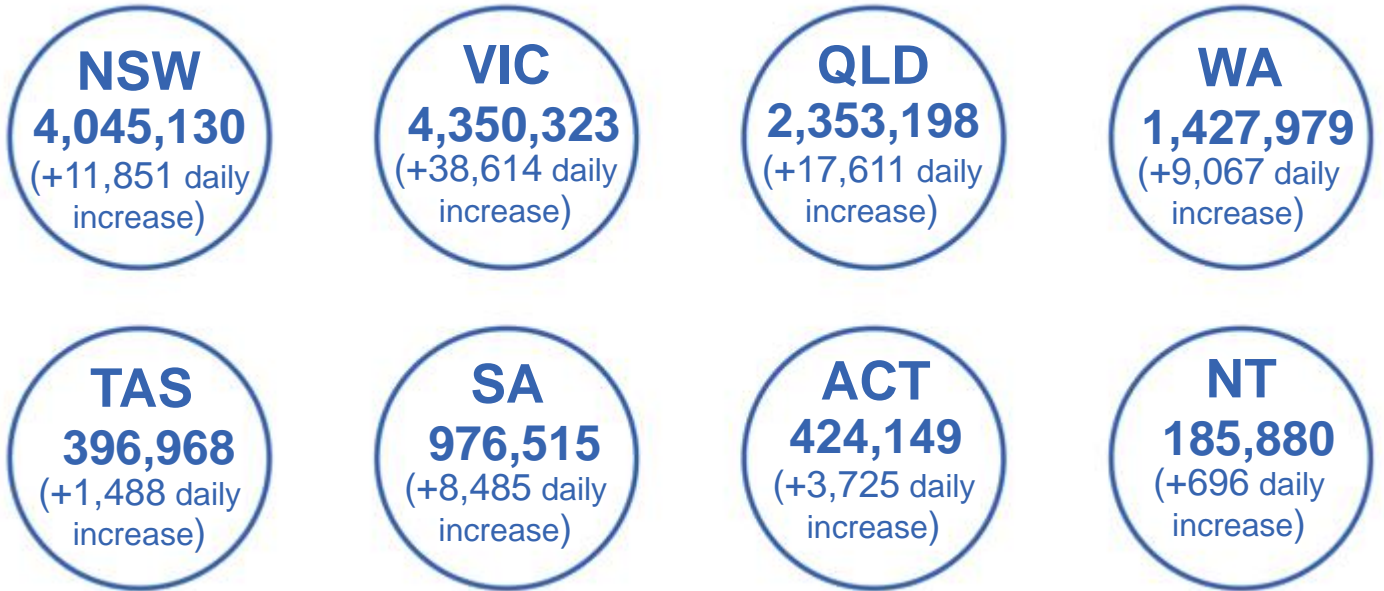
Data as at:
23 Oct 2021

Jurisdiction administered

Total vaccine doses administered in State and Territory clinics as at 23 October



14,160,142 total vaccine doses administered
in State and Territory clinics as at 23 October
+ **91,537** recorded in the last 24 hours
+ **670,968** recorded in the last 7 days



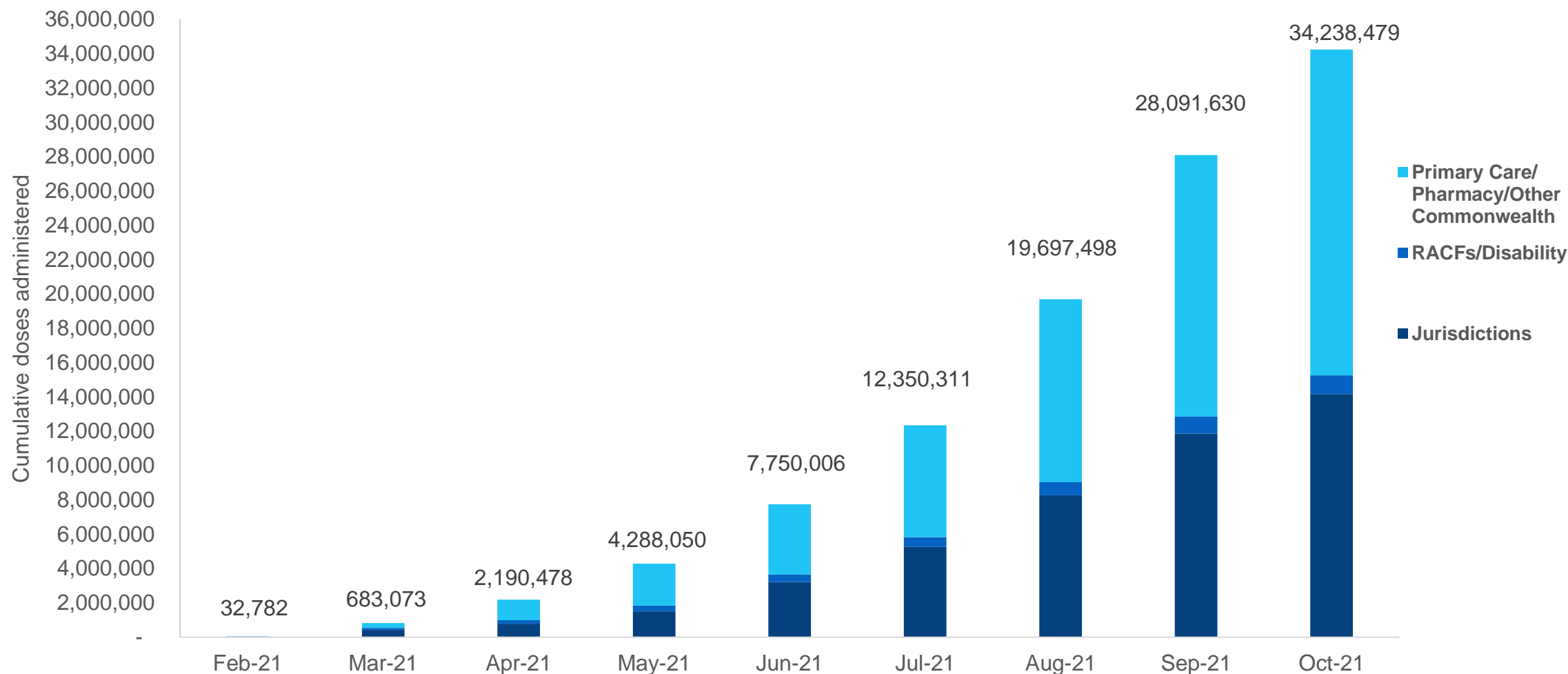
*Sourced from the Australian Immunisation Register and self-reported data. Numbers are calculated as difference in daily cumulative reported numbers to allow for historical corrections in all self-reported data sources.

Source: Australian Immunisation Register

Cumulative doses administered by channel

Data as at:
23 Oct 2021

Australia's COVID-19
Vaccine Roadmap



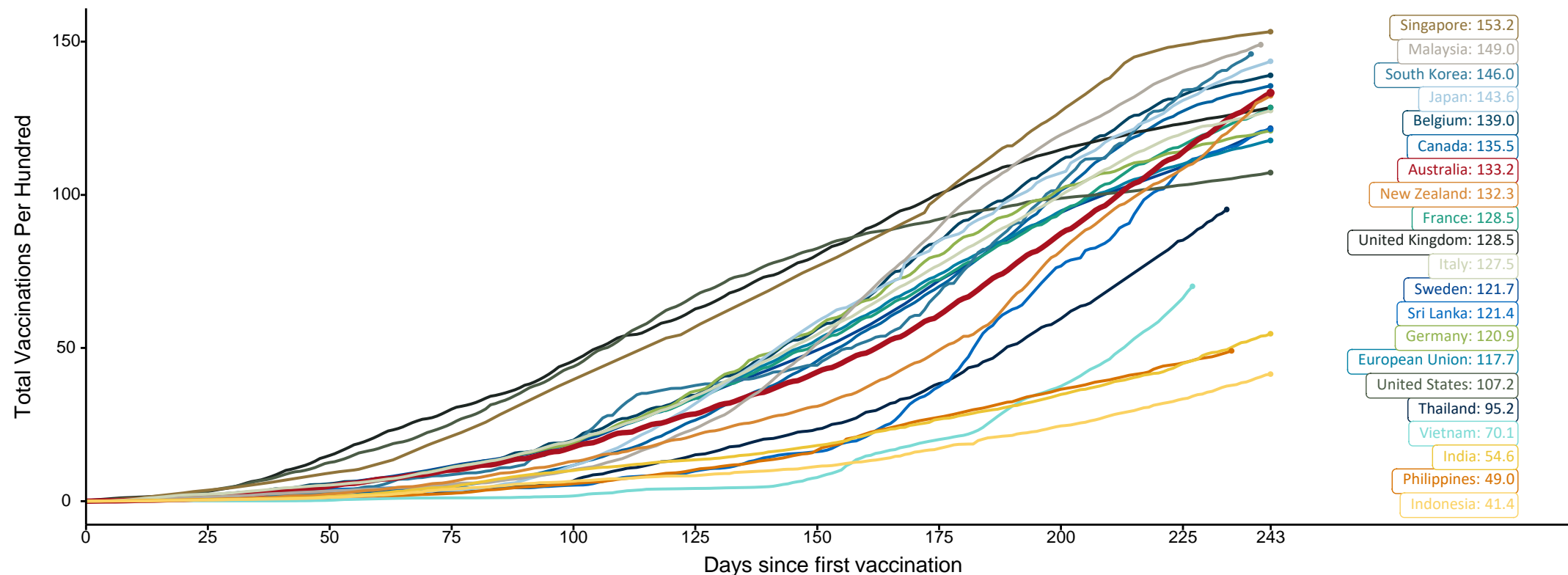
Source: Australian Immunisation Register

Doses at equivalent stages of rollout (Day 243)

Data as at:
23 Oct 2021

The x-axis is truncated at the length of Australia's vaccination program. Countries with intermittent reporting have had their doses per 100 imputed to Australia's current stage of rollout. Israel excluded as it is beyond scale of the graph

Cumulative doses administered (23 Oct): **34,238,479**

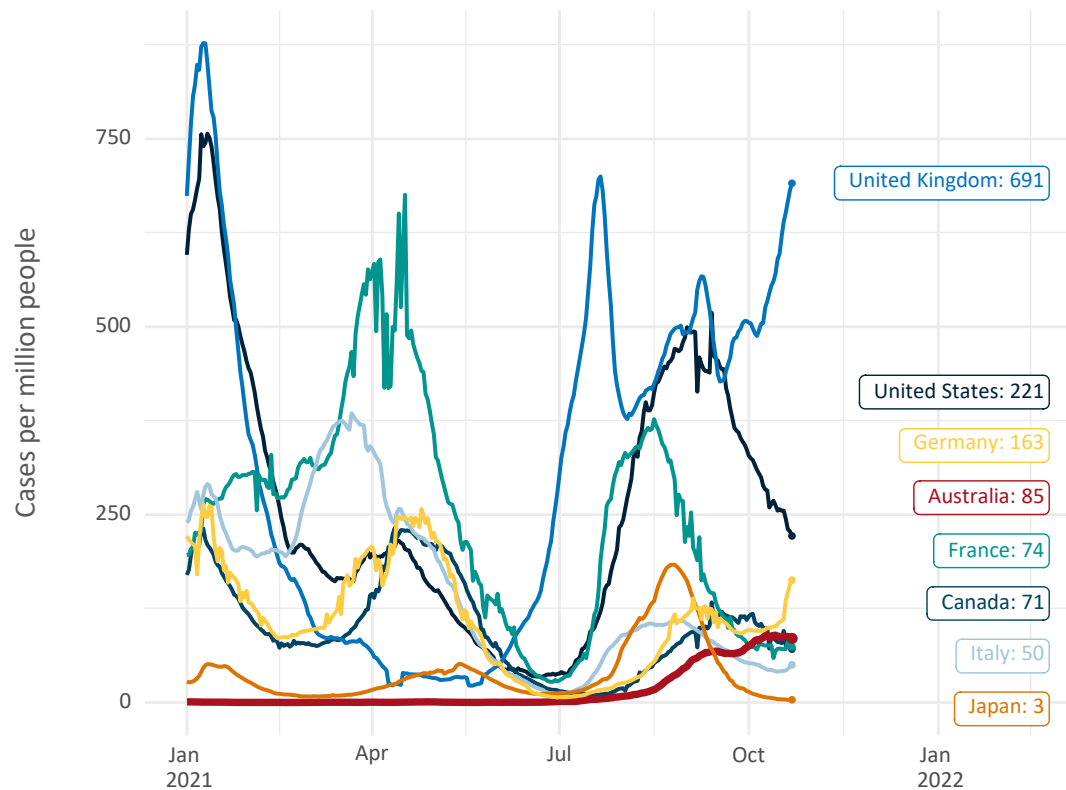


Note: From 15 September 2021, data for Australia includes all doses administered to people 12 and over. Prior to 15 September, data was for 16 and over
Source: Department of Health (Australia), Our World in Data (international)
Latest data: 23 October

International data – COVID-19

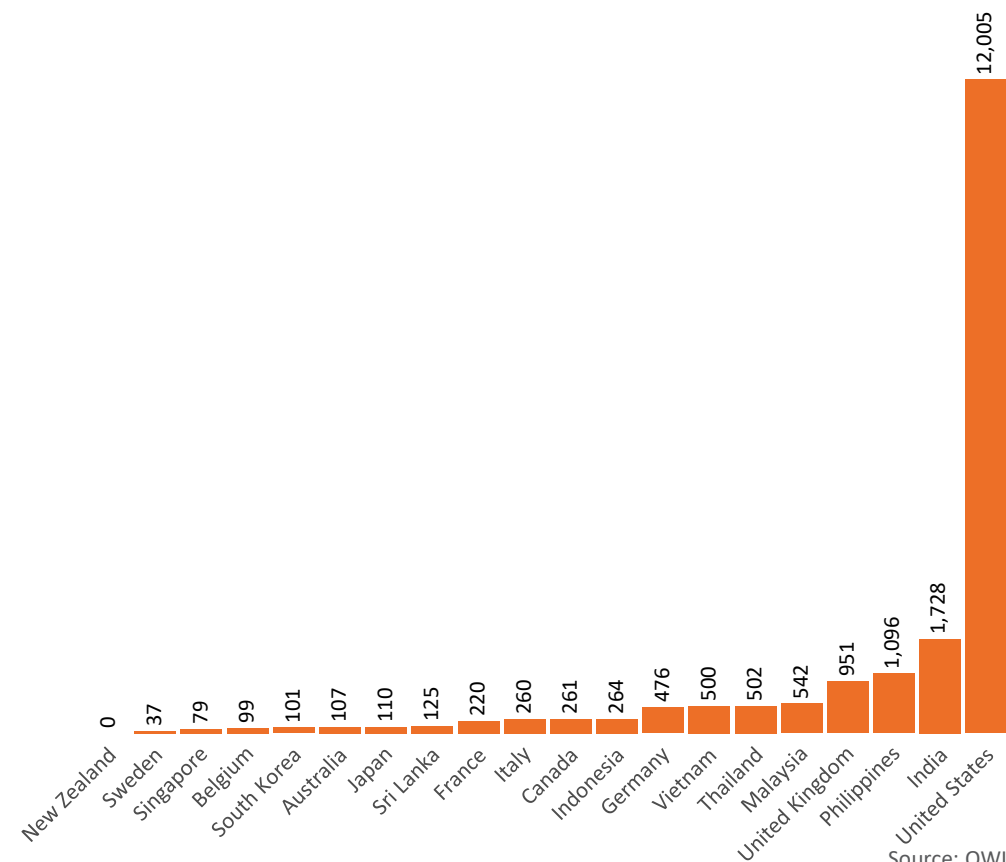
Data as at:
23 Oct 2021

New daily cases per million in 2021, Australia and G7 countries
Smoothed - 7 day average



Source: OWID
Data downloaded: 24 Oct 2021 09:50
Latest data: 22 Oct 2021

COVID-19 deaths in past 7 days - Australia and select countries



Source: OWID
Data downloaded: 24 Oct 2021 09:50
Latest data: 22 Oct 2021