



Australian Government
Operation COVID Shield

COVID-19 Vaccine Roll-out

21 October 2021

Data as at:
20 Oct 2021

Total vaccine doses



33,489,485 total vaccine doses administered nationally as at 20 October
+277,315 recorded in the last 24 hours



17,692,487

people have had at least one dose

85.8%

of people over the age of 16 have had at least one dose



14,605,501

people are fully vaccinated

70.8%

of people over the age of 16 are fully vaccinated

NSW
11,924,554
(+70,055 daily increase)

VIC
9,093,905
(+98,577 daily increase)

QLD
5,706,265
(+51,550 daily increase)

WA
2,892,694
(+23,808 daily increase)

TAS
703,014
(+6,224 daily increase)

SA
2,035,423
(+17,659 daily increase)

ACT
830,532
(+7,094 daily increase)

NT
303,098
(+2,348 daily increase)

*Administration state breakdown indicates state in which a vaccine was administered

**Overall dose count includes instances of more than two doses per person in a small number of cases.

Data as at: 20 Oct 2021

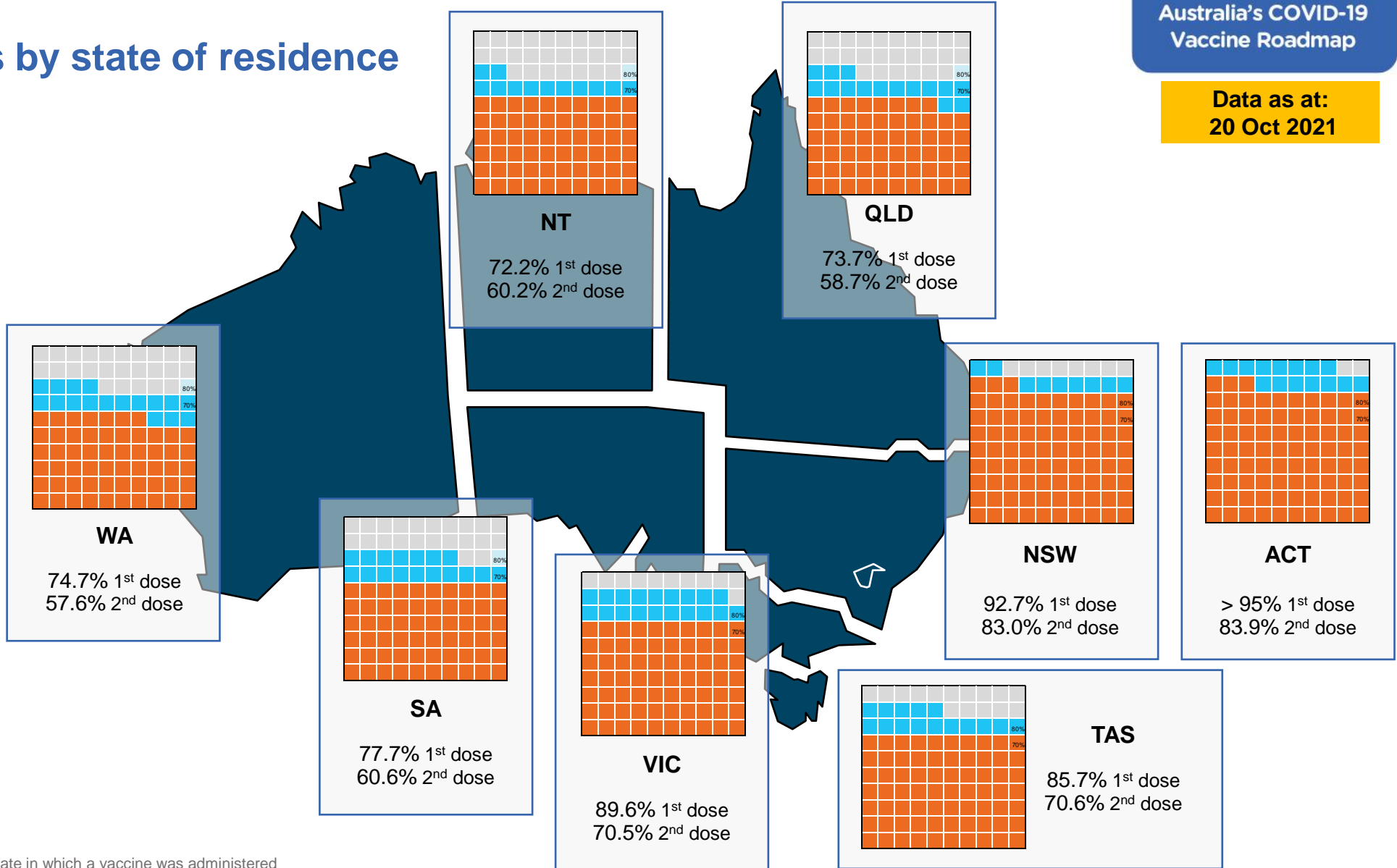
Vaccinations by state of residence

First doses

Age	Today	4 weeks ago	8 weeks ago
16+	85.8%	74.9%	56.3%
50+	93.7%	87.9%	77.9%
70+	>95%	94.1%	87.8%

Fully vaccinated

Age	Today	4 weeks ago	8 weeks ago
16+	70.8%	50.0%	33.1%
50+	81.6%	68.6%	49.0%
70+	86.6%	76.9%	61.6%



*Residential state may differ from the state in which a vaccine was administered

Commonwealth and Jurisdiction vaccine doses administered

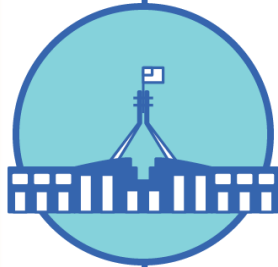
Data as at:
20 Oct 2021



33,489,485 total vaccine doses administered nationally as at 20 October
+ 277,315 recorded in the last 24 hours



13,879,080 doses administered by state and territory facilities
+ 96,575 recorded in the last 24 hours



19,610,405 doses administered by commonwealth facilities
+ 180,740 recorded in the last 24 hours

18,518,840 total vaccine doses administered in primary care settings
1,091,565 total vaccine doses administered in aged care and disability settings

NSW	Jurisdictions	Commonwealth
Cumulative	4,004,487	7,920,067
Daily increase	15,995	54,060

VIC	Jurisdictions	Commonwealth
Cumulative	4,235,785	4,858,120
Daily increase	38,332	60,245

QLD	Jurisdictions	Commonwealth
Cumulative	2,304,263	3,402,002
Daily increase	15,946	35,604

WA	Jurisdictions	Commonwealth
Cumulative	1,398,429	1,494,265
Daily increase	9,864	13,944

TAS	Jurisdictions	Commonwealth
Cumulative	390,396	312,618
Daily increase	3,397	2,827

SA	Jurisdictions	Commonwealth
Cumulative	951,748	1,083,675
Daily increase	7,678	9,981

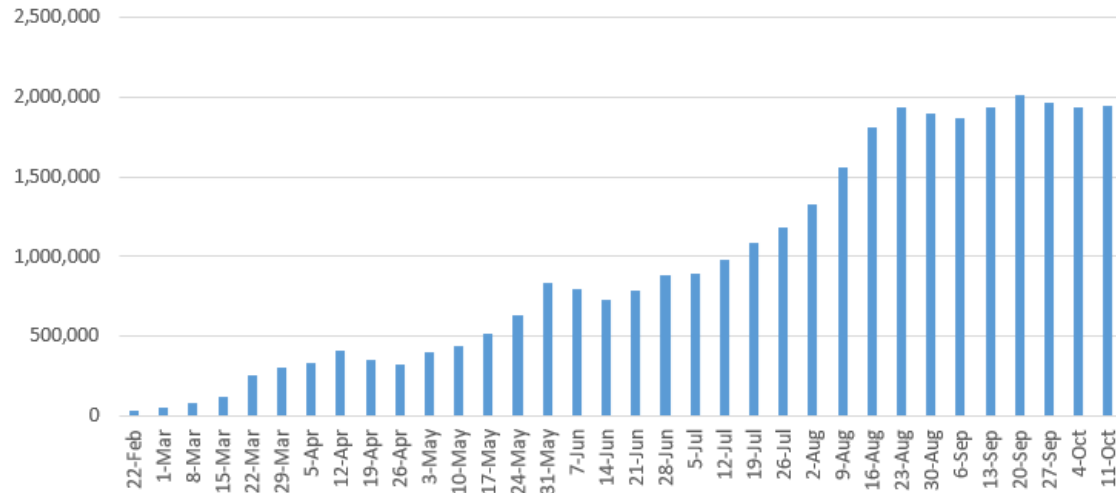
ACT	Jurisdictions	Commonwealth
Cumulative	411,067	419,465
Daily increase	3,931	3,163

NT	Jurisdictions	Commonwealth
Cumulative	182,905	120,193
Daily increase	1,432	916

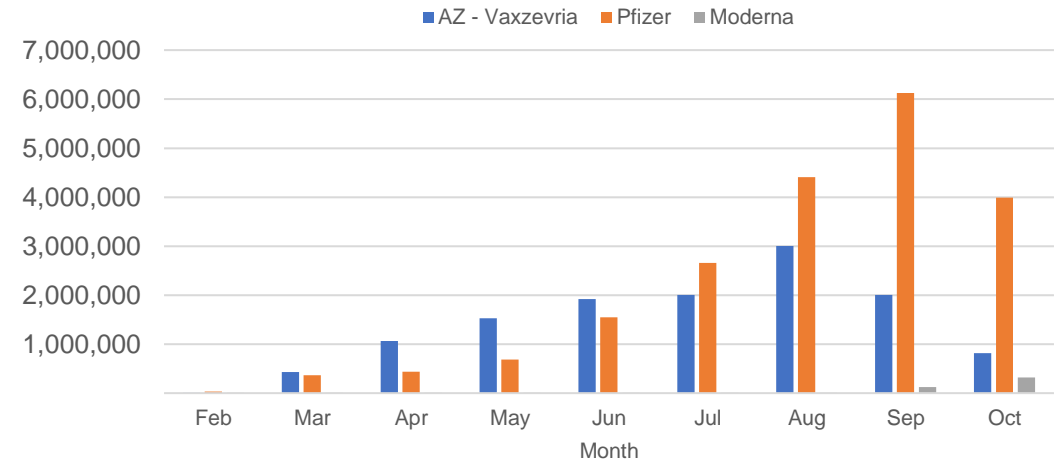
Vaccine milestone charts

Data as at: 20 Oct 2021

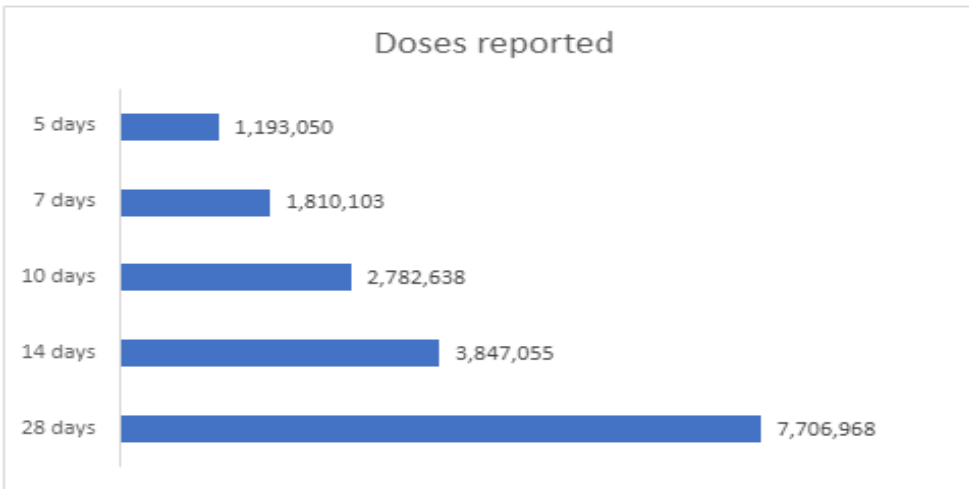
Jabs in arms by week



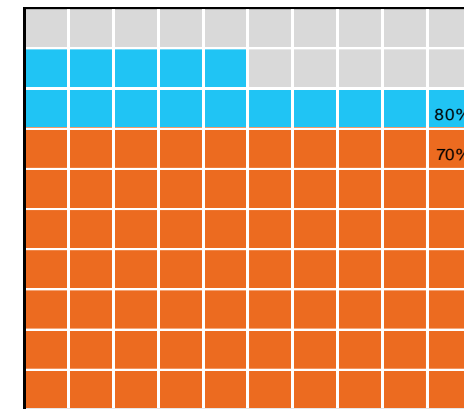
Doses by administration month and vaccine type



Doses reported



Eligible population percentage coverage



1st dose: 85.8% 2nd dose: 70.8%

*Each square represents 1% of the national population. Squares are filled as milestones are achieved.

*Sourced from the Australian Immunisation Register.

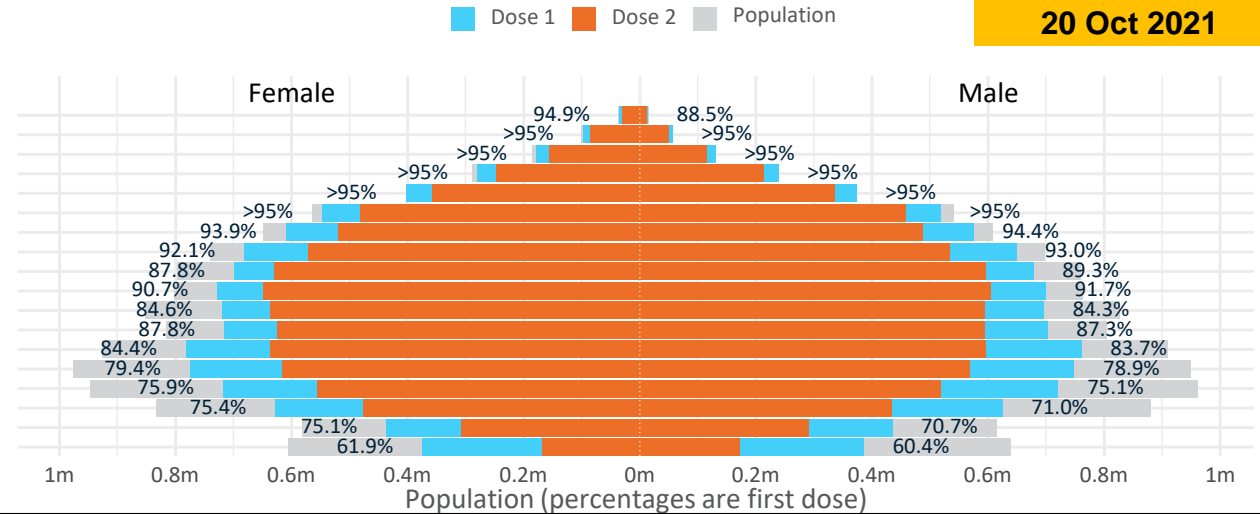
Doses by age and sex

First and second doses by age and sex

Data as at:
20 Oct 2021

	16+	50+	70+	12-15
Dose 1	85.80% (17,692,487 doses / 20,619,959 people)	93.70% (8,198,322 doses / 8,749,703 people)	>95% (2,875,032 doses / 2,934,706 people)	61.13% (760,475 doses / 1,243,990 people)
Dose 2	70.83% (14,605,501 doses / 20,619,959 people)	81.58% (7,138,094 doses / 8,749,703 people)	86.65% (2,542,802 doses / 2,934,706 people)	27.43% (341,198 doses / 1,243,990 people)

Age	Dose 1	Dose 2
95+	49,292 (93.2%)	42,332 (80.0%)
90-94	154,674 (>95%)	135,141 (85.3%)
85-89	308,806 (>95%)	270,656 (85.6%)
80-84	519,464 (>95%)	461,013 (87.2%)
75-79	776,353 (>95%)	692,809 (89.5%)
70-74	1,066,443 (>95%)	940,851 (85.1%)
65-69	1,185,858 (94.3%)	1,008,422 (80.1%)
60-64	1,330,498 (92.6%)	1,104,743 (76.9%)
55-59	1,378,610 (88.6%)	1,226,936 (78.9%)
50-54	1,428,324 (91.3%)	1,255,191 (80.2%)
45-49	1,417,404 (84.5%)	1,231,630 (73.5%)
40-44	1,420,702 (87.7%)	1,219,387 (75.3%)
35-39	1,546,632 (84.3%)	1,234,652 (67.3%)
30-34	1,530,615 (79.6%)	1,188,942 (61.8%)
25-29	1,448,681 (76.0%)	1,080,252 (56.7%)
20-24	1,258,385 (73.5%)	914,492 (53.4%)
16-19	871,746 (72.9%)	598,052 (50.0%)
12-15	760,475 (61.1%)	341,198 (27.4%)



	AUS	ACT	NSW	NT	QLD	SA	TAS	VIC	WA
16 and over - dose 1	17,692,487	338,050	6,083,651	137,538	3,029,571	1,119,763	377,425	4,843,840	1,580,418
16 and over - dose 2	14,605,501	288,715	5,451,764	114,792	2,415,116	873,323	310,743	3,812,668	1,218,742
16 and over - population	20,619,959*	344,037	6,565,651	190,571	4,112,707	1,440,400	440,172	5,407,574	2,114,978
16 and over % with dose 1	85.80%	>95%	92.66%	72.17%	73.66%	77.74%	85.74%	89.58%	74.73%
16 and over % with dose 2	70.83%	83.92%	83.03%	60.24%	58.72%	60.63%	70.60%	70.51%	57.62%
50 and over - dose 1	8,198,322	131,917	2,728,348	50,497	1,544,453	601,228	203,147	2,107,443	781,981
50 and over - dose 2	7,138,094	120,867	2,502,042	43,932	1,307,690	496,678	176,046	1,810,766	643,904
50 and over - population	8,749,703	127,802	2,807,793	62,280	1,758,855	674,384	220,036	2,211,211	885,370
50 and over % with dose 1	93.70%	>95%	>95%	81.08%	87.81%	89.15%	92.32%	>95%	88.32%
50 and over % with dose 2	81.58%	94.57%	89.11%	70.54%	74.35%	73.65%	80.01%	81.89%	72.73%
70 and over - dose 1	2,875,032	42,863	960,978	10,691	546,043	229,312	75,254	724,513	265,412
70 and over - dose 2	2,542,802	39,490	884,677	9,344	477,808	192,784	65,741	633,654	223,452
70 and over - population	2,934,706	39,946	962,606	12,343	577,767	240,514	77,155	743,519	280,281
70 and over % with dose 1	>95%	>95%	>95%	86.62%	94.51%	>95%	>95%	>95%	94.69%
70 and over % with dose 2	86.65%	>95%	91.90%	75.70%	82.70%	80.16%	85.21%	85.22%	79.72%
12 to 15 - dose 1	760,475	18,816	299,002	6,018	110,367	31,051	12,666	232,118	45,866
12 to 15 - dose 2	341,198	7,978	169,896	3,299	46,407	9,149	2,914	88,678	11,282
12 to 15 - population	1,243,990	19,693	390,330	13,060	270,146	82,747	26,308	308,611	132,869
12 to 15 % with dose 1	61.13%	>95%	76.60%	46.08%	40.85%	37.53%	48.15%	75.21%	34.52%
12 to 15 % with dose 2	27.43%	40.51%	43.53%	25.26%	17.18%	11.06%	11.08%	28.73%	8.49%

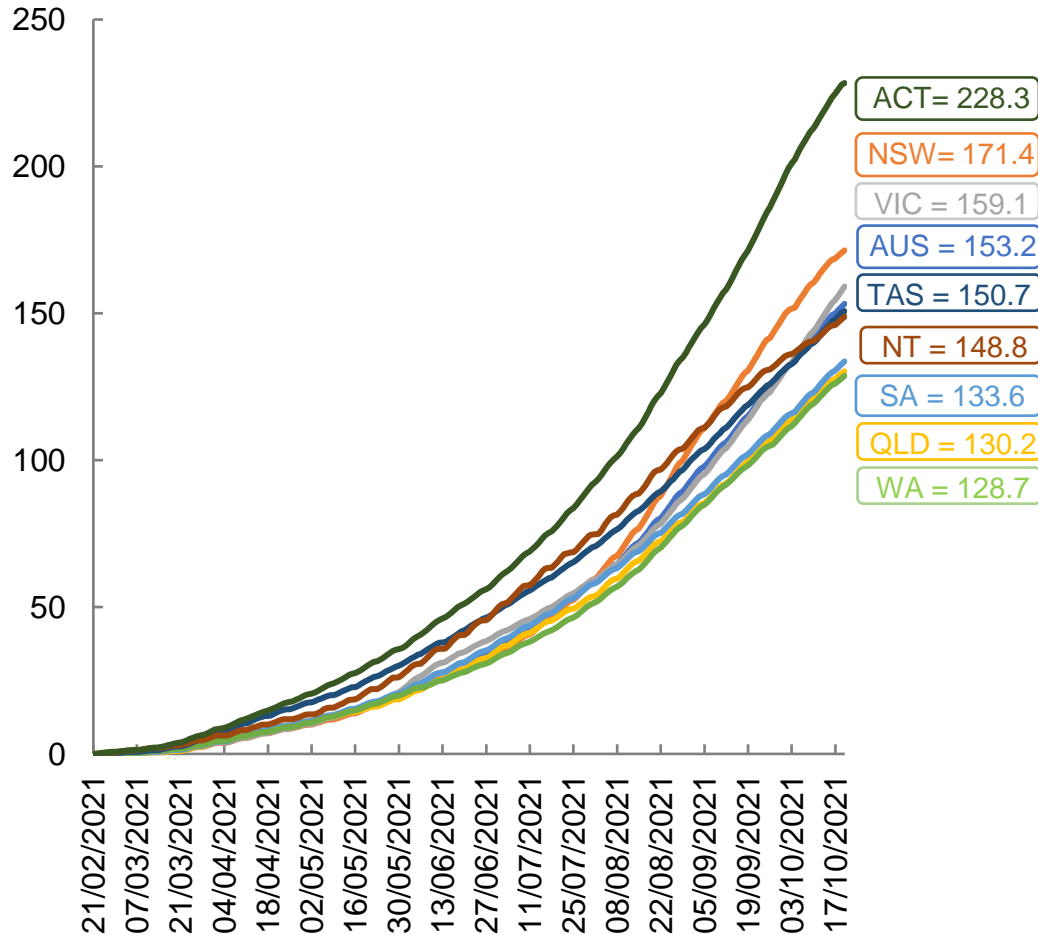
*National population will not equal sum of listed jurisdictions due to a small number of people counted in national population residing in some 'other' territories. Sum of state doses will not add to national total as some records are unable to be geocoded to a State or Territory.
Doses sourced from Australian Immunisation Register, population from ABS ERP June 2020

Vaccinations by location

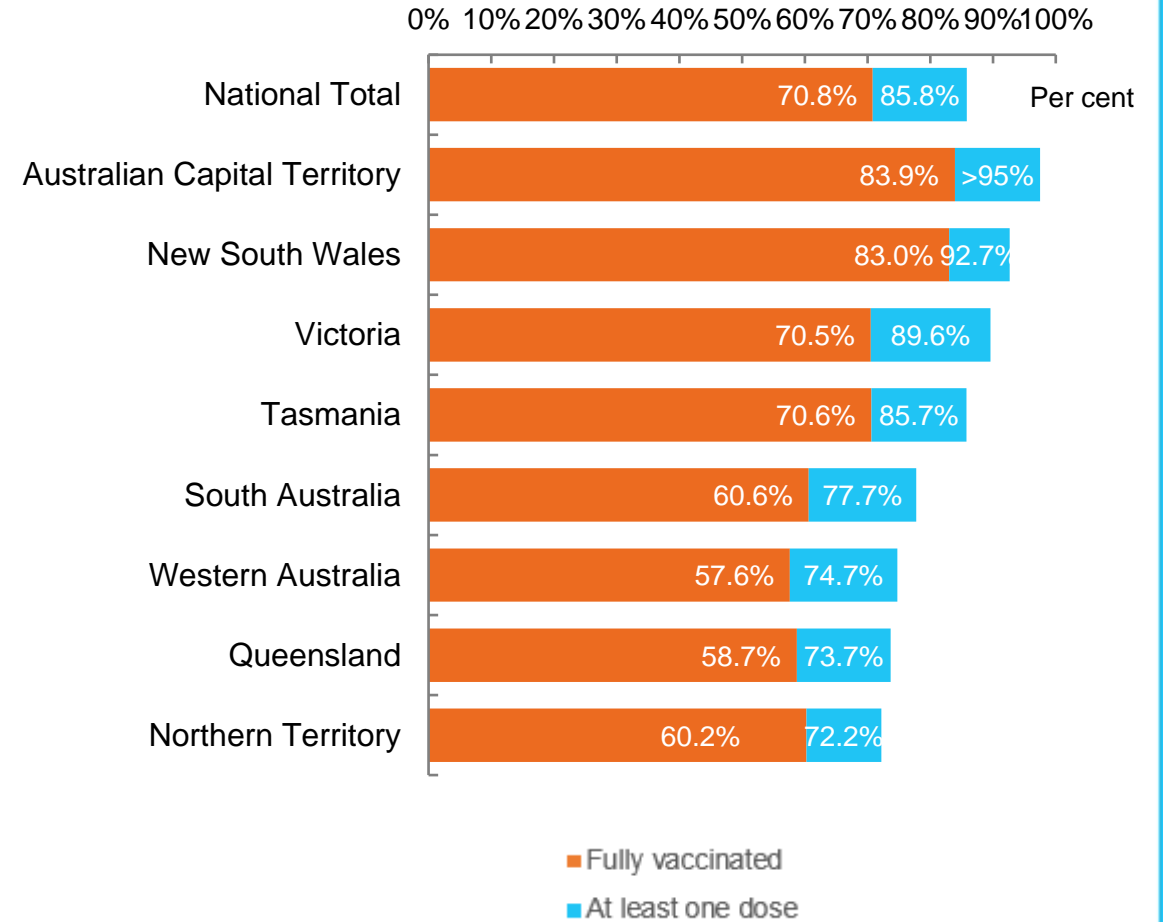
Data as at:
20 Oct 2021

Australia's COVID-19
Vaccine Roadmap

Cumulative total doses administered vs state populations*



First and Second Doses by state of residence



*Not an indication of percentage vaccinated, numbers will exceed 100 due to multiple doses required per person of the population

Aboriginal and Torres Strait Islander peoples

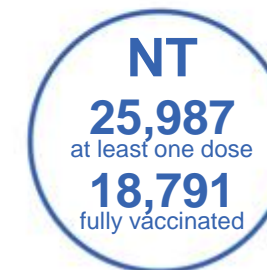
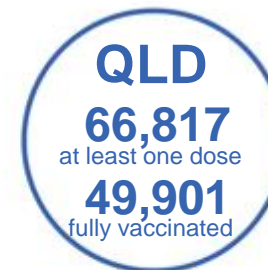
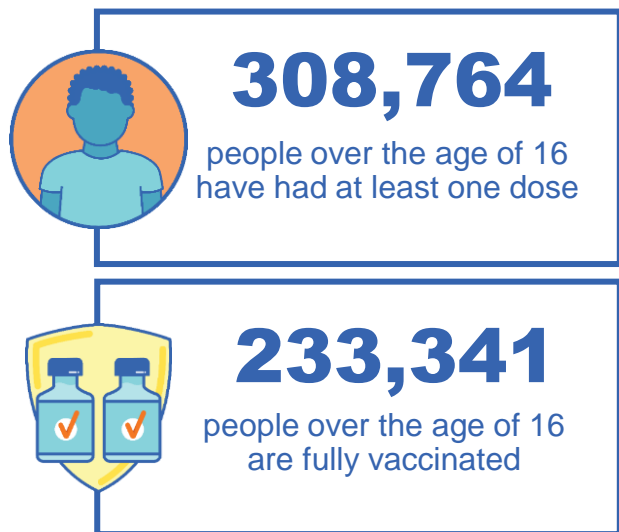
Number of people vaccinated

Data as at:
17 Oct 2021
Updated weekly

Australia's COVID-19
Vaccine Roadmap

169 Aboriginal community controlled health services (ACCHS)

0#	50	26	39	12	3	21	18
ACT	NSW	NT	QLD	SA	TAS	VIC	WA



8,219 people with at least one dose
5,239 people fully vaccinated

residing in other territories or with missing residential information

Source: Australian Immunisation Register

*Identifying as Aboriginal and Torres Strait Islander is optional and the estimated population may be under reported.

**Includes all Aboriginal and Torres Strait Islander peoples who have received a vaccination, not limited to those administered in an ACCHS setting

***Updated weekly.

#ACCHS in the ACT are currently operating as a Commonwealth Vaccine Clinics so not included to avoid double counting

Data as at:
20 Oct 2021

Commonwealth primary care



Primary care vaccine administration sites

5,572	137	169	3,391
GPs	CVCs	ACCHS	Pharmacies



18,518,840 total vaccine doses administered primary care settings as at 20 October
+ **177,358** recorded in the last 24 hours

Primary care vaccinations by provider type

	Doses administered	Daily increase	7 day increase
General Practice* includes other Commonwealth	17,158,303	146,679	933,923
Pharmacy	1,360,537	30,679	169,889



104,430 doses administered to persons residing in other territories or with missing residential information

*General practice includes Commonwealth Vaccination Clinics, Aboriginal Community Health Centres, Royal Flying Doctor Service and other Commonwealth vaccination facilities

Source: Australian Immunisation Register

Data as at:
20 Oct 2021

Commonwealth aged care and disability doses administered



1,091,565 (+ 3,382 last 24 hours)

Total vaccine doses administered in aged care and disability facilities as at 20 October

Number of doses administered as part of the Commonwealth aged and disability care rollout

NSW
506,878
(+753 daily increase)

VIC
194,048
(+436 daily increase)

QLD
203,773
(+1,632 daily increase)

WA
67,907
(+297 daily increase)

TAS
16,899
(+8 daily increase)

SA
58,896
(+141 daily increase)

ACT
12,815
(+55 daily increase)

NT
5,791
(-2# daily increase)

24,558

doses administered to persons residing in other territories or with missing residential information

*Sourced from the Australian Immunisation Register. Includes all persons vaccinated at participating residential aged care, disability and related industry settings.

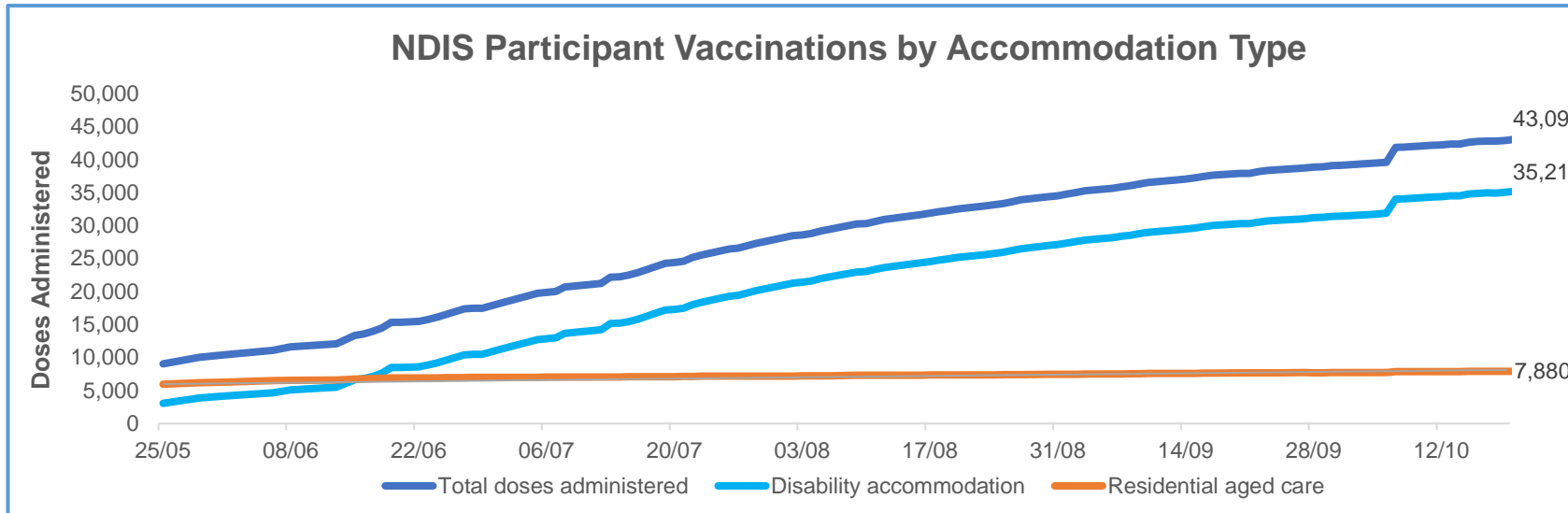
**State level breakdown indicates the residential location and may not align to the state in which the vaccination occurred.

#Numbers are calculated as difference in daily cumulative reported numbers to allow for historical corrections in all data sources. This can occasionally result in negative numbers, such as for NT, where historical details about doses have been updated

Data as at:
20 Oct 2021*

Vaccination rate of people with disability and the disability workforce

Phase 1a – People with disability living in shared accommodation



	Total people with at least one dose	People fully vaccinated	Total number of individuals in cohort	Total doses administered	% People with at least one dose	% People fully vaccinated
NDIS participants living in shared accommodation **	22,453	20,638	27,603	43,091	81.3%	74.8%
NDIS screened workers ***	175,309	154,011	217,088	329,320	80.8%	70.9%



* Updates are available Monday to Friday on participants, and bi-weekly for workers, numbers may be up to four days old.

** Shared accommodation means two or more people with disability living in shared residential accommodation and NDIS participants living in Residential Aged Care accommodation as per the eligibility criteria of Phase 1a.

*** Total number of workers within the NDIS Commission Worker Screening database who have ever been successfully screened and linked to an NDIS registered provider or participant.

**** Following Services Australia work to improve data matching between Medicare, the Australian Immunisation Register and National Disability Insurance Agency records, changes to participant numbers have been applied on 7 and 19 October 2021. These have resulted in an increase in reported numbers to include participants.

Source: Linkage between National Disability Insurance Agency data, NDIS Quality and Safeguards Commission data and the Australian Immunisation Register.

Residential aged care vaccination rollout

Residential aged care facilities status

100%

Commonwealth facilities visited (2,573 planned sites)

161,751

People fully vaccinated

90.3%

Participation rate

Data as at: 20 Oct 2021

Aged care resident vaccinations



Aged care worker vaccinations

Jurisdictions	Total workers with at least one dose	Workers fully vaccinated	% Workers with at least one dose	% Workers fully vaccinated
NSW	78,615	72,942	99.8%	92.6%
VIC	71,376	65,438	99.8%	91.5%
QLD	48,268	42,498	99.9%	88.0%
SA	27,245	24,644	100.0%	90.4%
WA	23,531	20,073	99.8%	85.1%
TAS	7,623	6,830	100.0%	89.6%
NT	811	757	99.3%	92.7%
ACT	2,950	2,791	100.0%	94.6%
Total	260,419	235,973	99.8%	90.5%

Source: My Aged Care Portal staff vaccination progress

**Resident vaccination information is reported manually by service providers

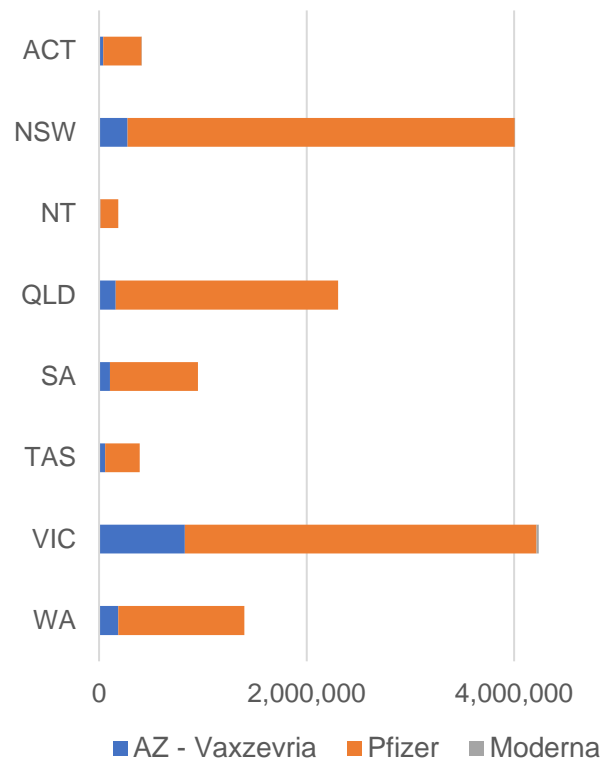
*Status updates are provided by facilities at least once per week. Reporting is updated Monday to Friday to encompass different facility updates being made on different days.

Data is sourced directly from Aged Care Service Providers and is not drawn or closely aligned with data from AIR due to inconsistencies and potential lags in uploading of records.

Data as at:
20 Oct 2021

Jurisdiction administered

Total vaccine doses administered in State and Territory clinics as at 20 October



13,879,080 total vaccine doses administered in State and Territory clinics as at 20 October
 + **96,575** recorded in the last 24 hours
 + **684,369** recorded in the last 7 days

NSW
4,004,487
 (+15,995 daily increase)

VIC
4,235,785
 (+38,332 daily increase)

QLD
2,304,263
 (+15,946 daily increase)

WA
1,398,429
 (+9,864 daily increase)

TAS
390,396
 (+3,397 daily increase)

SA
951,748
 (+7,678 daily increase)

ACT
411,067
 (+3,931 daily increase)

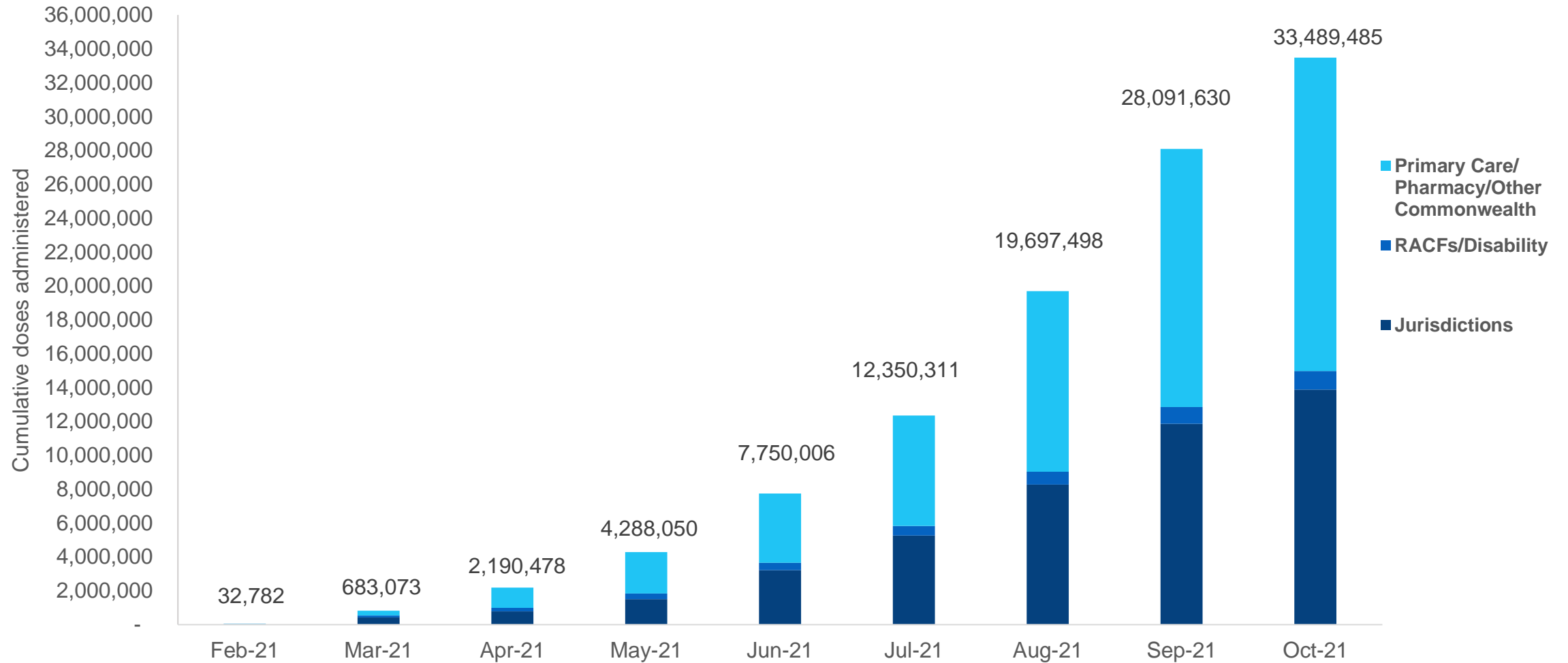
NT
182,905
 (+1,432 daily increase)

*Sourced from the Australian Immunisation Register and self-reported data. Numbers are calculated as difference in daily cumulative reported numbers to allow for historical corrections in all self-reported data sources.

Source: Australian Immunisation Register

Data as at:
20 Oct 2021

Cumulative doses administered by channel



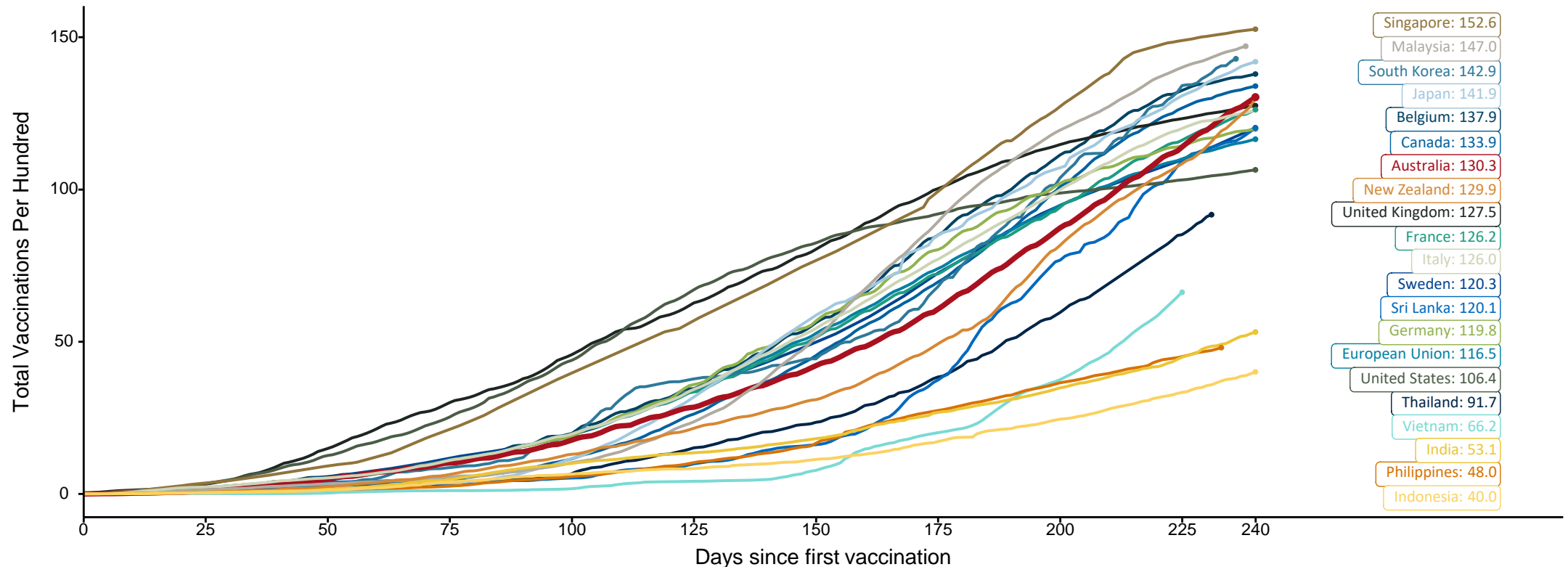
Source: Australian Immunisation Register

Doses at equivalent stages of rollout (Day 240)

Data as at:
20 Oct 2021

The x-axis is truncated at the length of Australia's vaccination program. Countries with intermittent reporting have had their doses per 100 imputed to Australia's current stage of rollout. Israel excluded as it is beyond scale of the graph

Cumulative doses administered (20 Oct): **33,489,485**

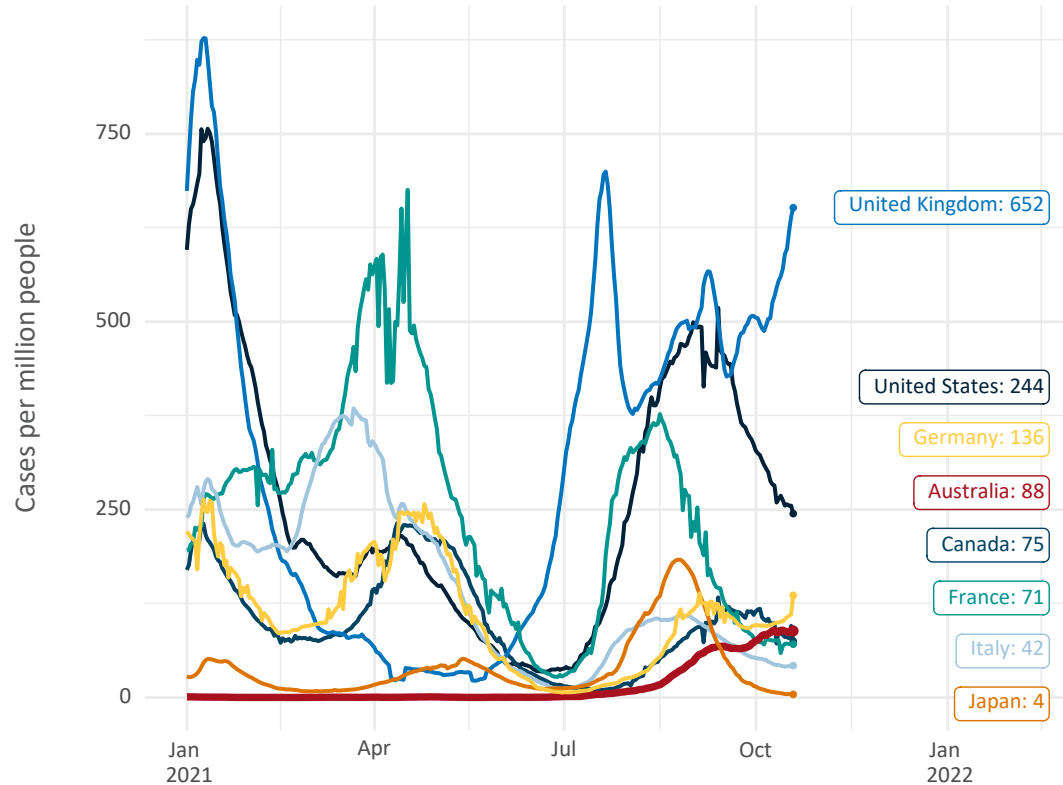


Note: From 15 September 2021, data for Australia includes all doses administered to people 12 and over. Prior to 15 September, data was for 16 and over
 Source: Department of Health (Australia), Our World in Data (international)
 Latest data: 20 October

Data as at:
20 Oct 2021

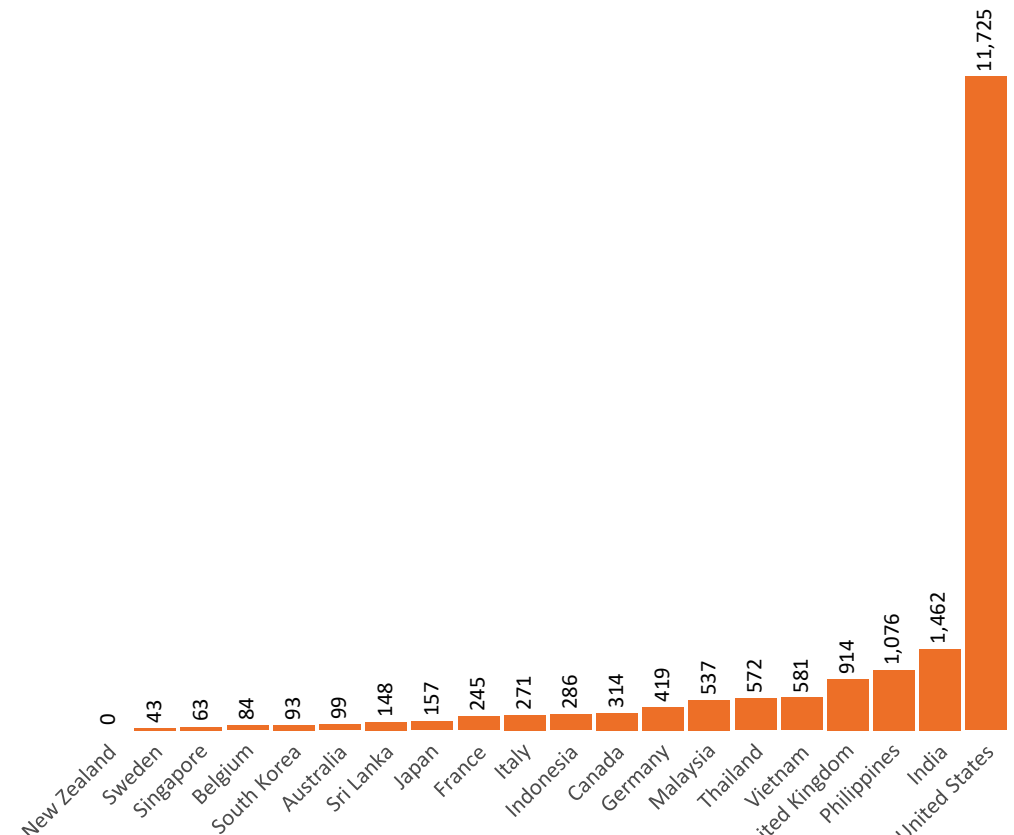
International data – COVID-19

New daily cases per million in 2021, Australia and G7 countries
Smoothed - 7 day average



Source: OWID
Data downloaded: 21 Oct 2021 08:43
Latest data: 19 Oct 2021

COVID-19 deaths in past 7 days - Australia and select countries



Source: OWID
Data downloaded: 21 Oct 2021 08:43
Latest data: 19 Oct 2021

Pandemic Response Payments

Data as at midnight:
20 Oct 2021



2.34 million
People have received at least one COVID Disaster Payment (including ISP200)

\$11.95 billion
Paid Out as at 20 Oct 2021

4.73 million
Claims granted across three different payments



93%
of Claims Received Digitally



COVID Disaster Payment: 4.60 million claims received - 2.16 million individuals paid a total of \$11.56 billion.

\$200 Income Support Payment: 282,000 claims received - 178,000 individuals paid a total of \$248.96 million.

Pandemic Leave Disaster Payment: 103,000 claims received - 89,000 individuals paid a total of \$142.93 million.



THREE PAYMENTS AVAILABLE

COVID Disaster Payment
assisting during a lockdown event in a Commonwealth hotspot.

Income Support Payment \$200
for income support recipients who lost at least 8 hours of work.

Pandemic Leave Disaster Payment
for those who have to self-isolate, quarantine or care.

For more information visit:
servicesaustralia.gov.au

COVID-19 DISASTER PAYMENTS

