



Australian Government
Operation COVID Shield

COVID-19 Vaccine Roll-out

20 October 2021

Data as at:
19 Oct 2021

Total vaccine doses



33,212,170 total vaccine
doses administered nationally as at 19 October
+277,872 recorded in the last 24 hours



17,622,159

people have had at least one
dose

85.5%

of people over the age of 16
have had at least one dose



14,435,341

people are fully vaccinated

70.0%

of people over the age of 16 are
fully vaccinated

NSW
11,854,499
(+73,386 daily
increase)

VIC
8,995,328
(+101,590 daily
increase)

QLD
5,654,715
(+46,024 daily
increase)

WA
2,868,886
(+22,858 daily
increase)

TAS
696,790
(+6,800 daily
increase)

SA
2,017,764
(+17,754 daily
increase)

ACT
823,438
(+7,200 daily
increase)

NT
300,750
(+2,260 daily
increase)

*Administration state breakdown indicates state in which a vaccine was administered

**Overall dose count includes instances of more than two doses per person in a small number of cases.

Source: Australian Immunisation Register

Data as at:
19 Oct 2021

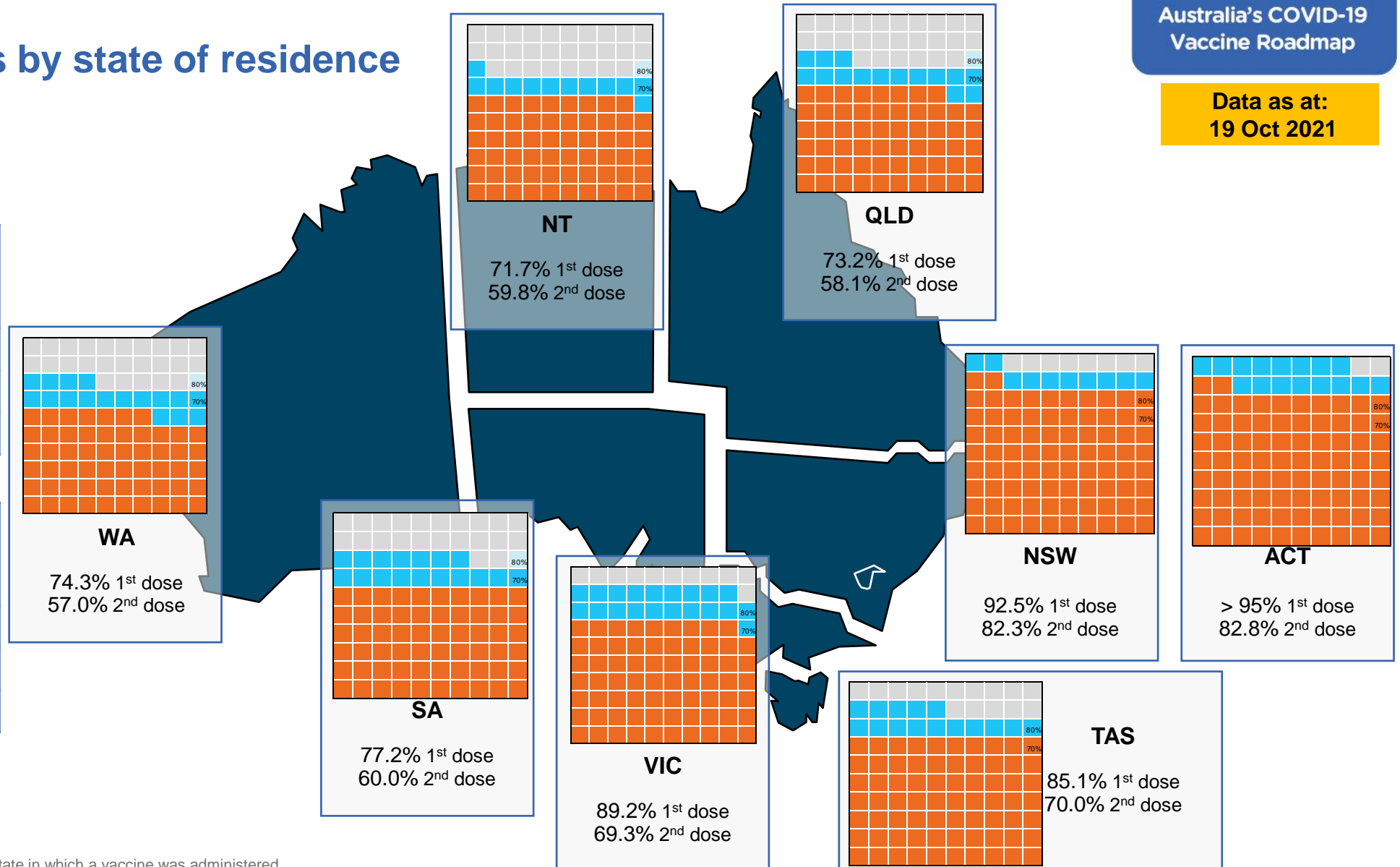
Vaccinations by state of residence

First doses

Age	Today	4 weeks ago	8 weeks ago
16+	85.5%	74.2%	55.4%
50+	93.5%	87.5%	77.4%
70+	>95%	93.8%	87.5%

Fully vaccinated

Age	Today	4 weeks ago	8 weeks ago
16+	70.0%	49.2%	32.4%
50+	81.0%	67.9%	47.8%
70+	86.2%	76.3%	60.5%



*Residential state may differ from the state in which a vaccine was administered

Commonwealth and Jurisdiction vaccine doses administered

Data as at:
19 Oct 2021

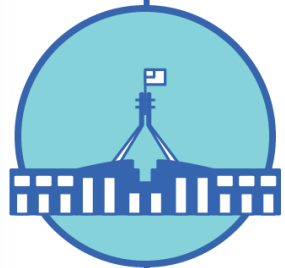


13,782,505

doses administered by state
and territory facilities

+ 95,432

recorded in the last 24 hours



19,429,665

doses administered by
commonwealth facilities

+ 182,440

recorded in the last 24 hours

18,341,482 total vaccine doses
administered in primary care settings

1,088,183 total vaccine doses
administered in aged care and disability
settings



33,212,170

total vaccine
doses administered nationally as at 19 October

+ 277,872 recorded in the last 24 hours

NSW	Jurisdictions	Commonwealth
Cumulative	3,988,492	7,866,007
Daily increase	16,763	56,623

VIC	Jurisdictions	Commonwealth
Cumulative	4,197,453	4,797,875
Daily increase	38,586	63,004

QLD	Jurisdictions	Commonwealth
Cumulative	2,288,317	3,366,398
Daily increase	13,045	32,979

WA	Jurisdictions	Commonwealth
Cumulative	1,388,565	1,480,321
Daily increase	9,208	13,650

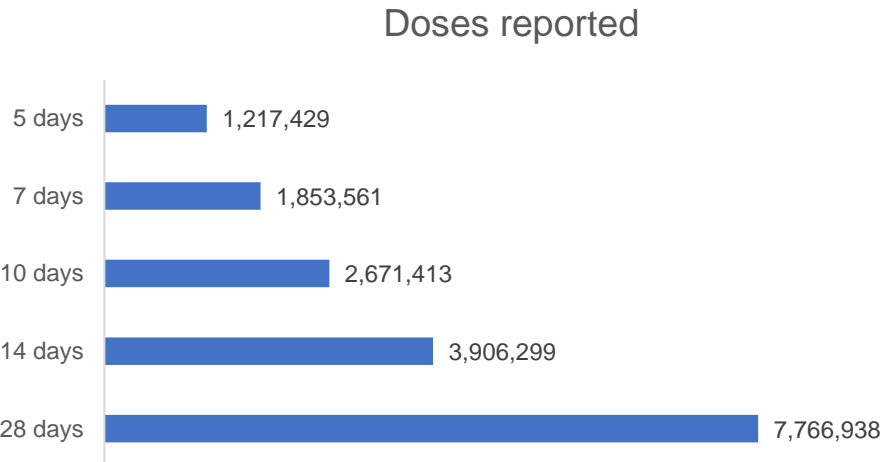
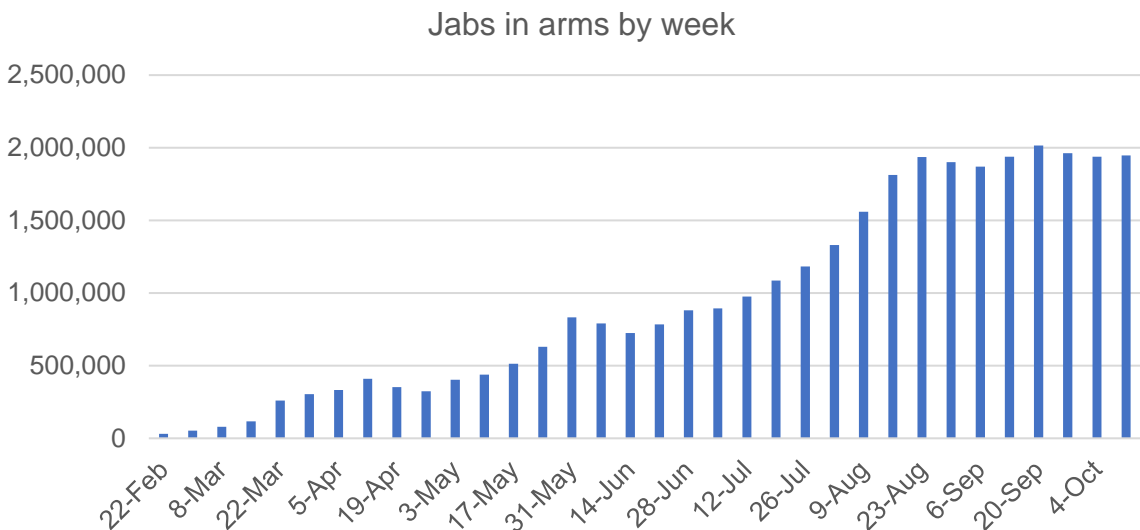
TAS	Jurisdictions	Commonwealth
Cumulative	386,999	309,791
Daily increase	4,237	2,563

SA	Jurisdictions	Commonwealth
Cumulative	944,070	1,073,694
Daily increase	8,175	9,579

ACT	Jurisdictions	Commonwealth
Cumulative	407,136	416,302
Daily increase	4,093	3,107

NT	Jurisdictions	Commonwealth
Cumulative	181,473	119,277
Daily increase	1,325	935

Vaccine milestone charts

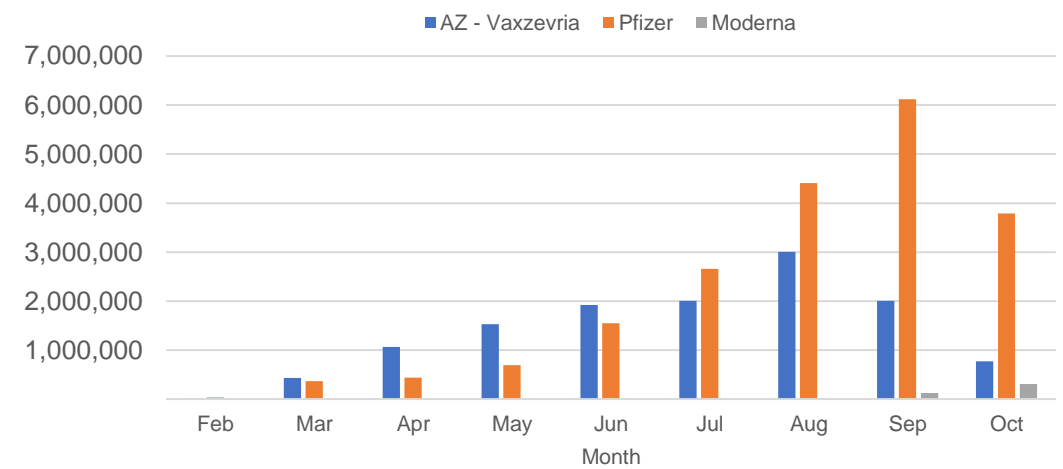


*Sourced from the Australian Immunisation Register.

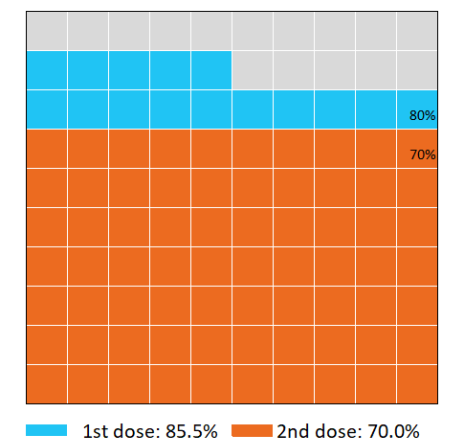
Data as at:
19 Oct 2021

Australia's COVID-19
Vaccine Roadmap

Doses by administration month and vaccine type



Eligible population percentage coverage



*Each square represents 1% of the national population. Squares are filled as milestones are achieved.

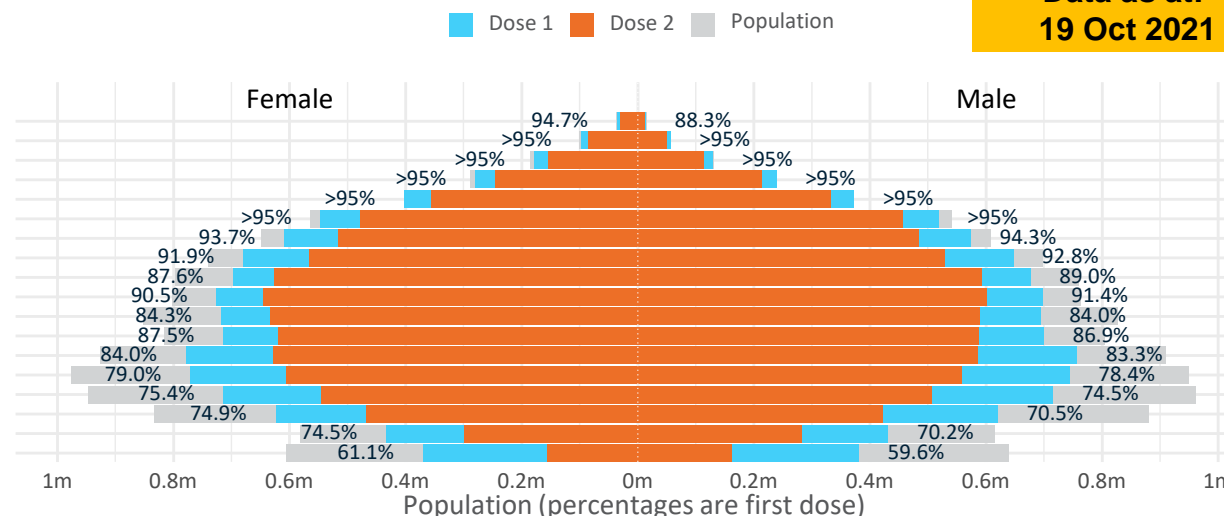
Doses by age and sex

First and second doses by age and sex

Australia's COVID-19
Vaccine Roadmap

Data as at:
19 Oct 2021

Age	Dose 1	Dose 2
95+	49,188 (93.0%)	42,161 (79.7%)
90-94	154,386 (>95%)	134,495 (84.9%)
85-89	308,212 (>95%)	269,161 (85.1%)
80-84	518,563 (>95%)	458,407 (86.7%)
75-79	775,018 (>95%)	688,826 (89.0%)
70-74	1,064,875 (>95%)	935,248 (84.6%)
65-69	1,183,547 (94.1%)	1,000,422 (79.5%)
60-64	1,327,512 (92.4%)	1,094,772 (76.2%)
55-59	1,375,118 (88.4%)	1,219,495 (78.4%)
50-54	1,423,988 (91.0%)	1,246,521 (79.7%)
45-49	1,412,555 (84.2%)	1,222,522 (72.9%)
40-44	1,415,354 (87.4%)	1,209,196 (74.6%)
35-39	1,539,016 (83.9%)	1,215,186 (66.2%)
30-34	1,521,743 (79.1%)	1,168,358 (60.7%)
25-29	1,438,463 (75.4%)	1,057,772 (55.5%)
20-24	1,249,628 (73.0%)	892,364 (52.1%)
16-19	864,993 (72.3%)	580,435 (48.5%)
12-15	750,953 (60.4%)	317,728 (25.5%)



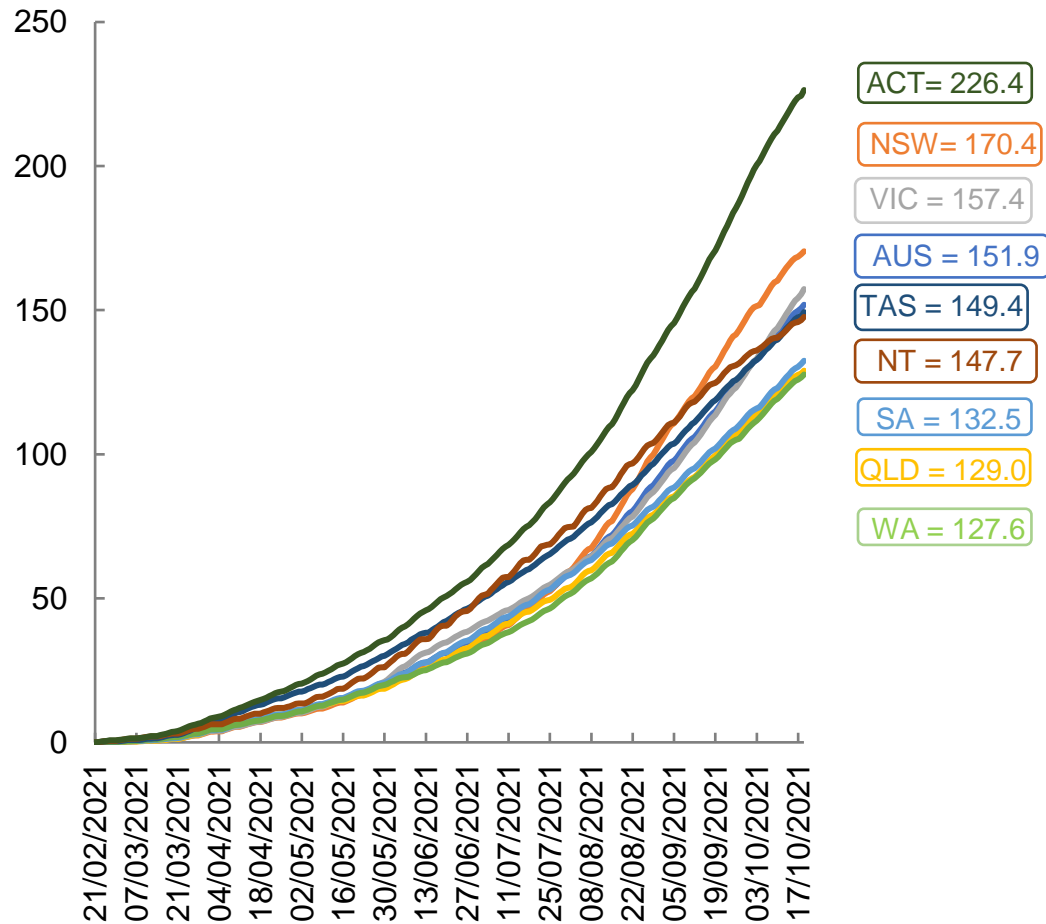
	AUS	ACT	NSW	NT	QLD	SA	TAS	VIC	WA
16 and over - dose 1	17,622,159	337,421	6,072,314	136,594	3,011,032	1,112,491	374,686	4,824,221	1,571,275
16 and over - dose 2	14,435,341	284,889	5,405,642	113,941	2,388,076	864,325	307,921	3,746,120	1,206,425
16 and over - population	20,619,959*	344,037	6,565,651	190,571	4,112,707	1,440,400	440,172	5,407,574	2,114,978
16 and over % with dose 1	85.46%	>95%	92.49%	71.68%	73.21%	77.23%	85.12%	89.21%	74.29%
16 and over % with dose 2	70.01%	82.81%	82.33%	59.79%	58.07%	60.01%	69.95%	69.28%	57.04%
50 and over - dose 1	8,180,407	131,816	2,725,076	50,319	1,539,555	599,415	202,547	2,102,463	779,853
50 and over - dose 2	7,089,508	120,247	2,487,498	43,714	1,298,090	492,883	175,047	1,796,345	639,633
50 and over - population	8,749,703	127,802	2,807,793	62,280	1,758,855	674,384	220,036	2,211,211	885,370
50 and over % with dose 1	93.49%	>95%	>95%	80.79%	87.53%	88.88%	92.05%	>95%	88.08%
50 and over % with dose 2	81.03%	94.09%	88.59%	70.19%	73.80%	73.09%	79.55%	81.24%	72.24%
70 and over - dose 1	2,870,242	42,841	959,935	10,668	544,932	228,833	75,094	723,005	264,949
70 and over - dose 2	2,528,298	39,340	880,092	9,317	475,201	191,506	65,400	629,401	222,242
70 and over - population	2,934,706	39,946	962,606	12,343	577,767	240,514	77,155	743,519	280,281
70 and over % with dose 1	>95%	>95%	>95%	86.43%	94.32%	>95%	>95%	>95%	94.53%
70 and over % with dose 2	86.15%	>95%	91.43%	75.48%	82.25%	79.62%	84.76%	84.65%	79.29%
12 to 15 - dose 1	750,953	18,710	296,918	5,795	108,340	30,323	12,297	229,178	44,894
12 to 15 - dose 2	317,728	7,314	159,799	3,155	43,593	8,439	2,724	80,889	10,340
12 to 15 - population	1,243,990	19,693	390,330	13,060	270,146	82,747	26,308	308,611	132,869
12 to 15 % with dose 1	60.37%	>95%	76.07%	44.37%	40.10%	36.65%	46.74%	74.26%	33.79%
12 to 15 % with dose 2	25.54%	37.14%	40.94%	24.16%	16.14%	10.20%	10.35%	26.21%	7.78%

*National population will not equal sum of listed jurisdictions due to a small number of people counted in national population residing in some 'other' territories. Sum of state doses will not add to national total as some records are unable to be geocoded to a State or Territory.

Doses sourced from Australian Immunisation Register, population from ABS ERP June 2020

Vaccinations by location

Cumulative total doses administered vs state populations*

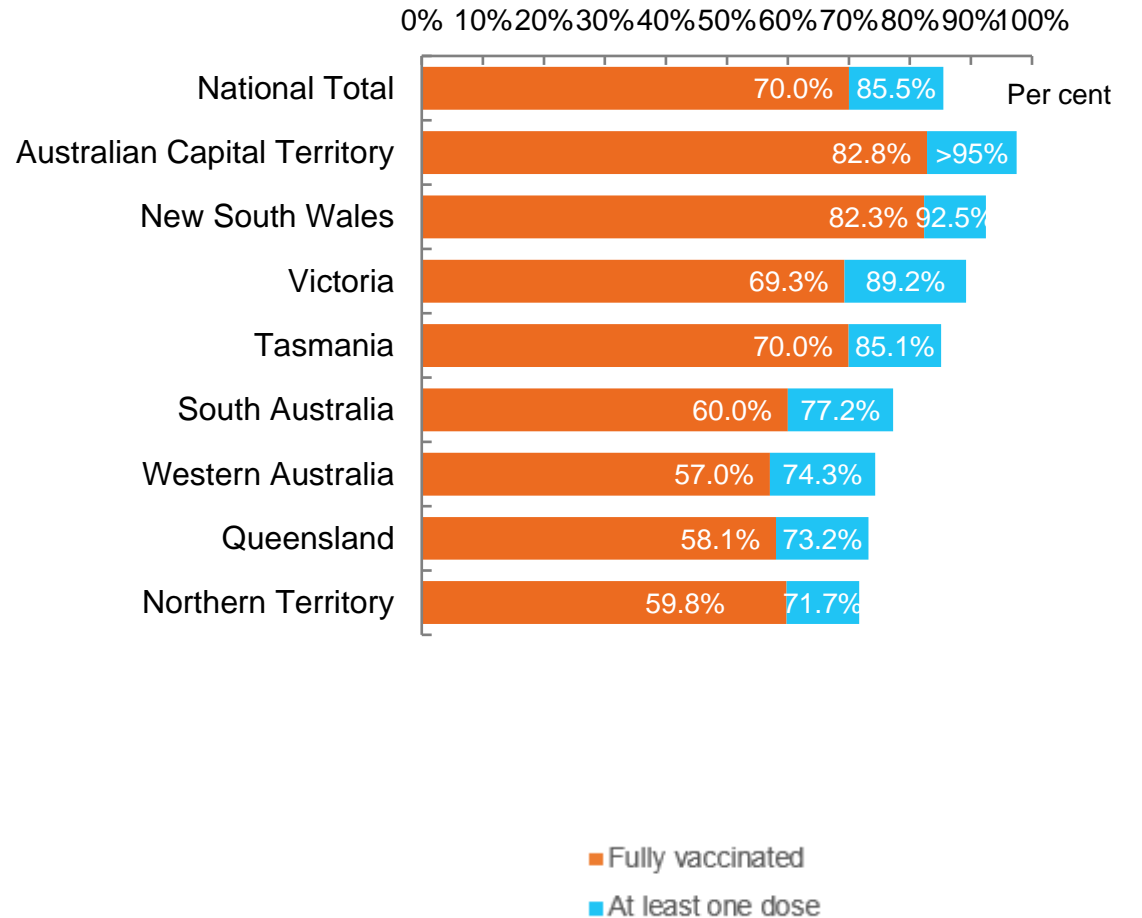


*Not an indication of percentage vaccinated, numbers will exceed 100 due to multiple doses required per person of the population

Data as at:
19 Oct 2021

Australia's COVID-19
Vaccine Roadmap

First and Second Doses by state of residence



Aboriginal and Torres Strait Islander peoples

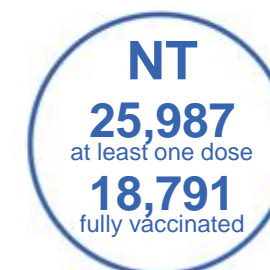
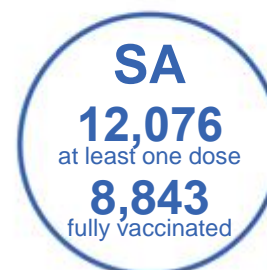
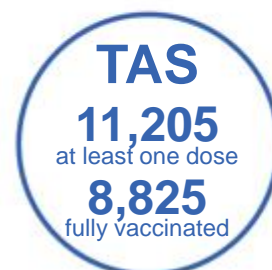
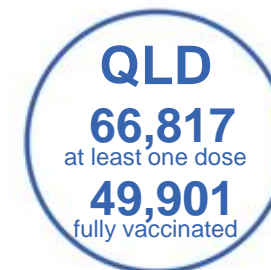
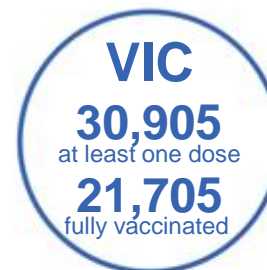
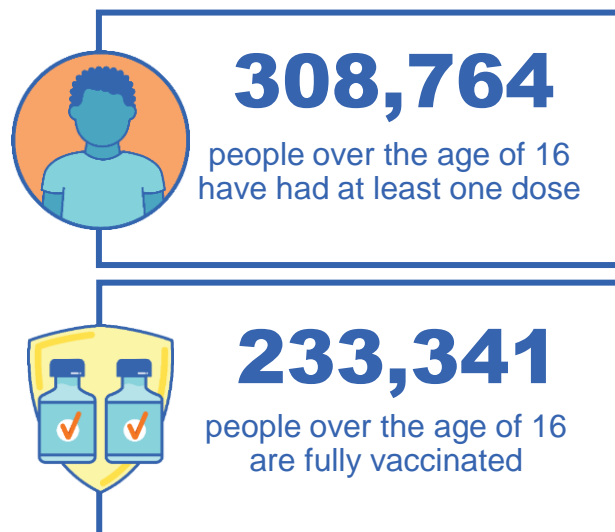
Number of people vaccinated

Data as at:
17 Oct 2021
Updated weekly

Australia's COVID-19
Vaccine Roadmap

169 Aboriginal community controlled health services (ACCHS)

0#	50	26	39	12	3	21	18
ACT	NSW	NT	QLD	SA	TAS	VIC	WA



8,219 people with at least one dose
5,239 people fully vaccinated

residing in other territories or with missing residential information

Source: Australian Immunisation Register

*Identifying as Aboriginal and Torres Strait Islander is optional and the estimated population may be under reported.

**Includes all Aboriginal and Torres Strait Islander peoples who have received a vaccination, not limited to those administered in an ACCHS setting

***Updated weekly.

#ACCHS in the ACT are currently operating as a Commonwealth Vaccine Clinics so not included to avoid double counting

Data as at:
19 Oct 2021

Commonwealth primary care



Primary care vaccine administration sites

5,572	137	169	3,391
GPs	CVCs	ACCHS	Pharmacies



18,341,482 total vaccine doses administered primary care settings as at 19 October
+ 179,306 recorded in the last 24 hours

Primary care vaccinations by provider type

	Doses administered	Daily increase	7 day increase
General Practice* includes other Commonwealth	17,011,624	150,786	959,106
Pharmacy	1,329,858	28,520	170,520



103,443 doses administered to persons residing in other territories or with missing residential information

*General practice includes Commonwealth Vaccination Clinics, Aboriginal Community Health Centres, Royal Flying Doctor Service and other Commonwealth vaccination facilities

Source: Australian Immunisation Register

Data as at:
19 Oct 2021

Commonwealth aged care and disability doses administered



1,088,183 (+ 3,134 last 24 hours)

Total vaccine doses administered in aged care and disability facilities as at 19 October

Number of doses administered as part of the Commonwealth aged and disability care rollout

NSW
506,125
(+1,385 daily increase)

VIC
193,612
(+412 daily increase)

QLD
202,141
(+1,087 daily increase)

WA
67,610
(+230 daily increase)

TAS
16,891
(-1# daily increase)

SA
58,755
(+53 daily increase)

ACT
12,760
(+52 daily increase)

NT
5,793
(+5 daily increase)

24,496

doses administered to persons residing in other territories or with missing residential information

* Sourced from the Australian Immunisation Register. Includes all persons vaccinated at participating residential aged care, disability and related industry settings.

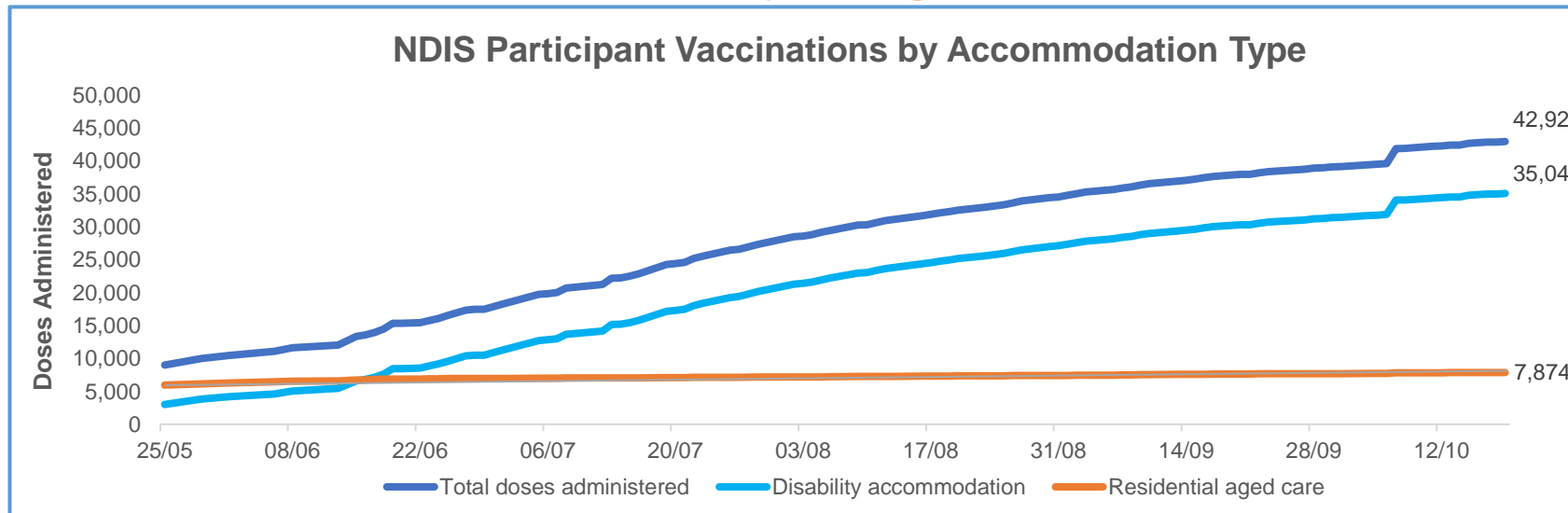
** State level breakdown indicates the residential location and may not align to the state in which the vaccination occurred.

Numbers are calculated as difference in daily cumulative reported numbers to allow for historical corrections in all data sources. This can occasionally result in negative numbers, such as for TAS, where historical details about doses have been updated.

Data as at:
19 Oct 2021*

Vaccination rate of people with disability and the disability workforce

Phase 1a – People with disability living in shared accommodation



	Total people with at least one dose	People fully vaccinated	Total number of individuals in cohort	Total doses administered	% People with at least one dose	% People fully vaccinated
NDIS participants living in shared accommodation **	22,383	20,538	27,603	42,921	81.1%	74.4%
NDIS screened workers ***	175,309	154,011	217,088	329,320	80.8%	70.9%



* Updates are available Monday to Friday on participants, and bi-weekly for workers, numbers may be up to four days old.

** Shared accommodation means two or more people with disability living in shared residential accommodation and NDIS participants living in Residential Aged Care accommodation as per the eligibility criteria of Phase 1a.

*** Total number of workers within the NDIS Commission Worker Screening database who have ever been successfully screened and linked to an NDIS registered provider or participant.

**** Following Services Australia work to improve data matching between Medicare, the Australian Immunisation Register and National Disability Insurance Agency records, changes to participant numbers have been applied on 7 and 19 October 2021. These have resulted in an increase in reported numbers to include participants.

Source: Linkage between National Disability Insurance Agency data, NDIS Quality and Safeguards Commission data and the Australian Immunisation Register.

Following ongoing work by Services Australia to improve data matching between Medicare, the Australian Immunisation Register and National Disability Insurance Agency records, improvements to data reporting have been applied from 7 October 2021. These have resulted in a one off increase in reported numbers to include participants who were previously not accurately data matched.

Residential aged care vaccination rollout

Residential aged care facilities status

100% Commonwealth facilities visited (2,573 planned sites)

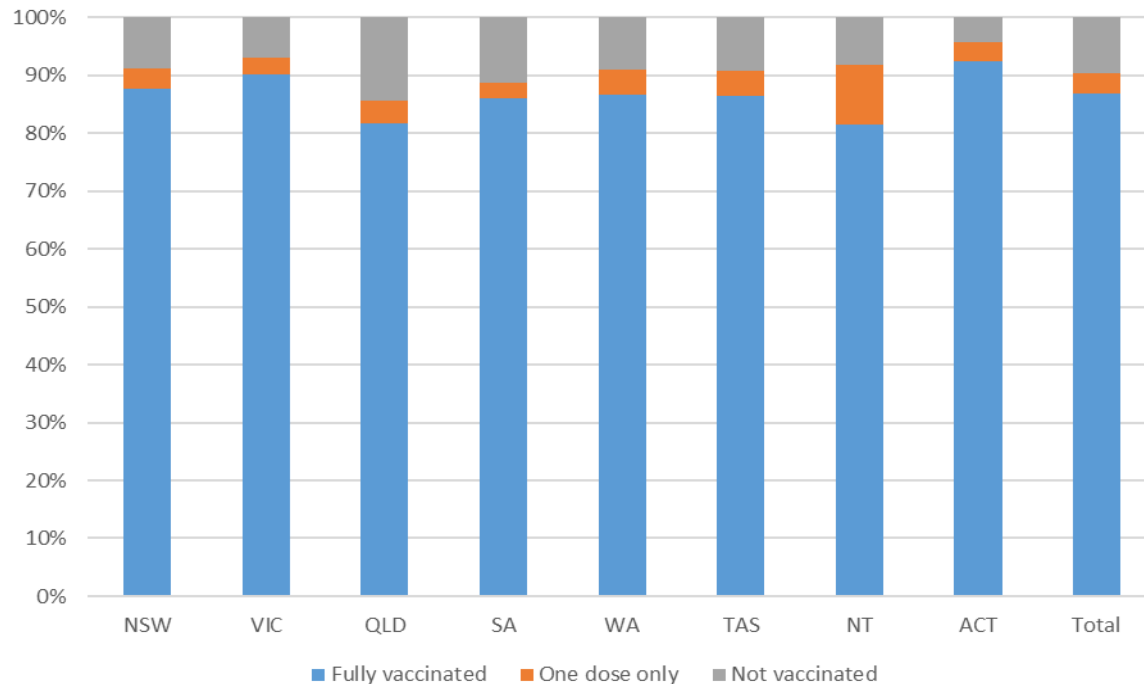
161,736 People fully vaccinated

90.3% Participation rate

Australia's COVID-19 Vaccine Roadmap

Data as at:
19 Oct 2021

Aged care resident vaccinations



Aged care worker vaccinations

Jurisdictions	Total workers with at least one dose	Workers fully vaccinated	% Workers with at least one dose	% Workers fully vaccinated
NSW	78,623	72,709	99.8%	92.3%
VIC	71,290	65,185	99.8%	91.2%
QLD	48,089	42,236	99.6%	87.5%
SA	27,242	24,625	100.0%	90.4%
WA	23,499	20,033	99.7%	85.0%
TAS	7,497	6,671	98.3%	87.5%
NT	811	757	99.3%	92.7%
ACT	2,951	2,785	100.0%	94.4%
Total	260,002	235,001	99.7%	90.1%

Source: My Aged Care Portal staff vaccination progress

**Resident vaccination information is reported manually by service providers

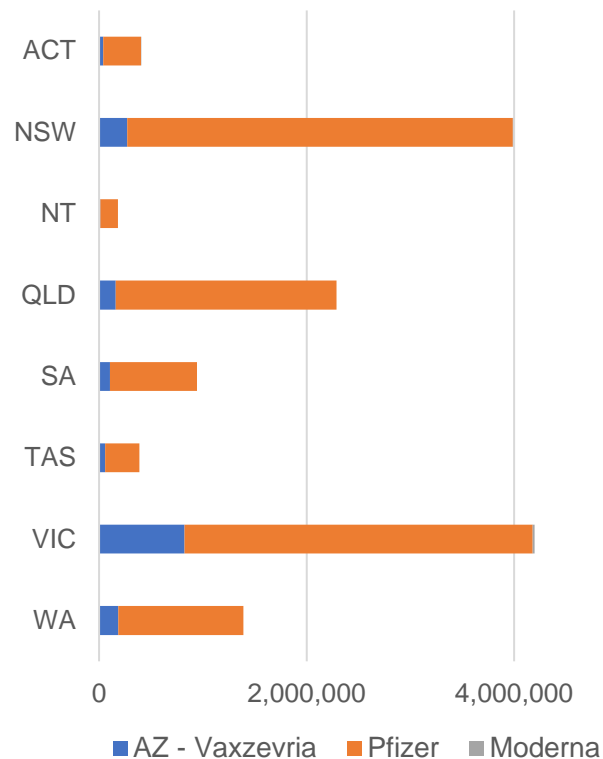
*Status updates are provided by facilities at least once per week. Reporting is updated Monday to Friday to encompass different facility updates being made on different days.

Data is sourced directly from Aged Care Service Providers and is not drawn or closely aligned with data from AIR due to inconsistencies and potential lags in uploading of records.

Data as at:
19 Oct 2021

Jurisdiction administered

Total vaccine doses administered in State and Territory clinics as at 19 October



13,782,505 total vaccine doses administered
in State and Territory clinics as at 19 October
+ **95,432** recorded in the last 24 hours
+ **704,508** recorded in the last 7 days

NSW
3,988,492
(+16,763 daily increase)

VIC
4,197,453
(+38,586 daily increase)

QLD
2,288,317
(+13,045 daily increase)

WA
1,388,565
(+9,208 daily increase)

TAS
386,999
(+4,237 daily increase)

SA
944,070
(+8,175 daily increase)

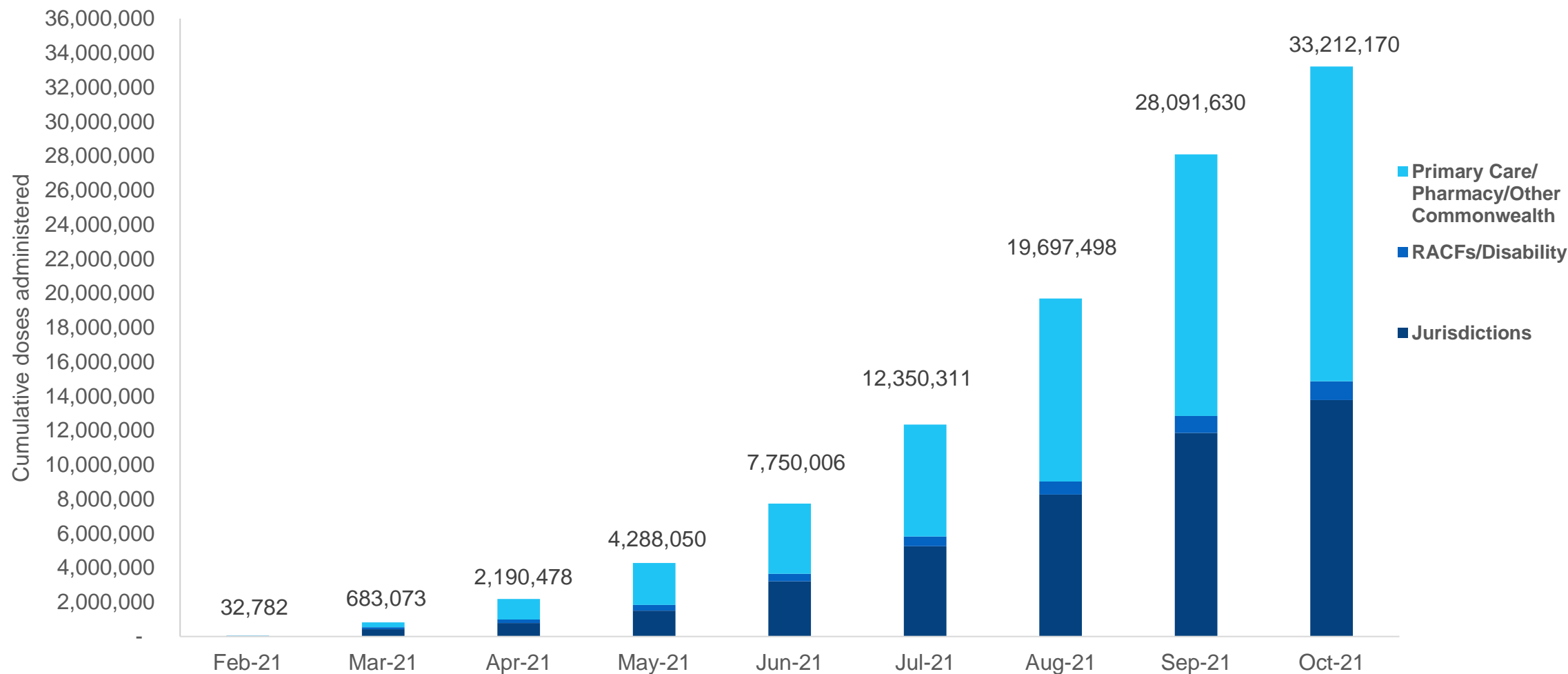
ACT
407,136
(+4,093 daily increase)

NT
181,473
(+1,325 daily increase)

*Sourced from the Australian Immunisation Register and self-reported data. Numbers are calculated as difference in daily cumulative reported numbers to allow for historical corrections in all self-reported data sources.

Cumulative doses administered by channel

Data as at:
19 Oct 2021



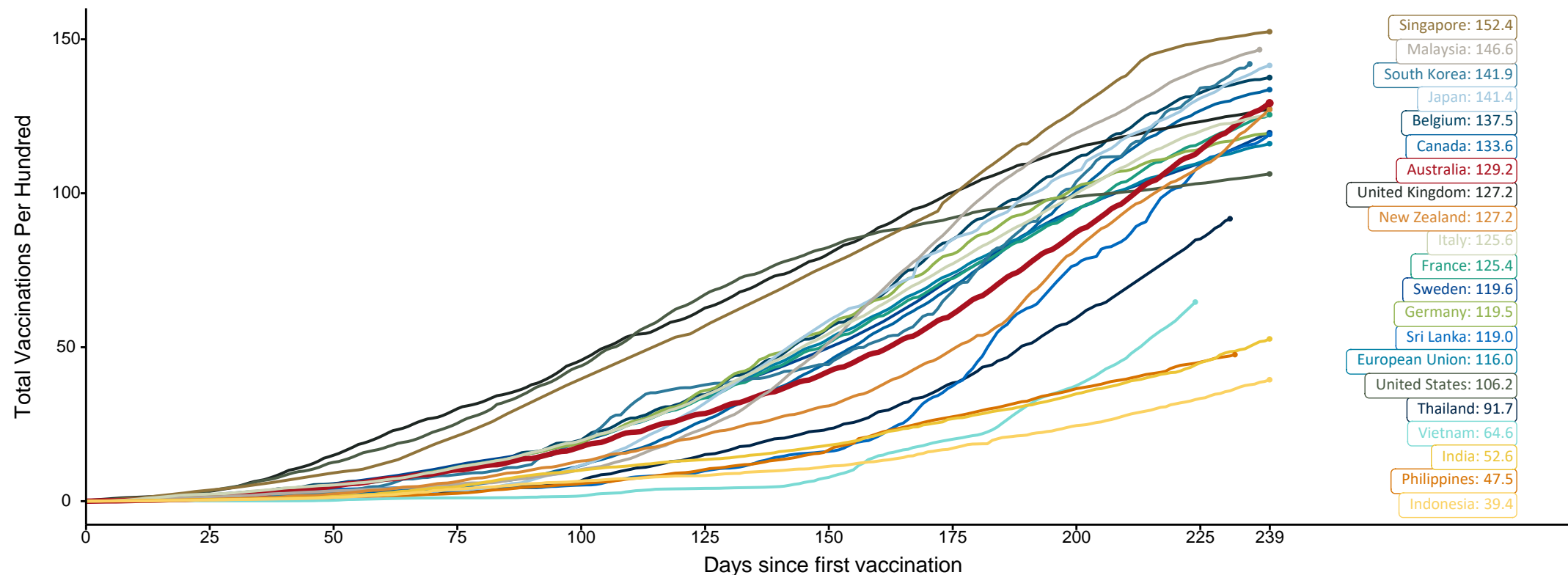
Source: Australian Immunisation Register

Doses at equivalent stages of rollout (Day 239)

Data as at:
19 Oct 2021

The x-axis is truncated at the length of Australia's vaccination program. Countries with intermittent reporting have had their doses per 100 imputed to Australia's current stage of rollout. Israel excluded as it is beyond scale of the graph

Cumulative doses administered (19 Oct): **33,212,170**

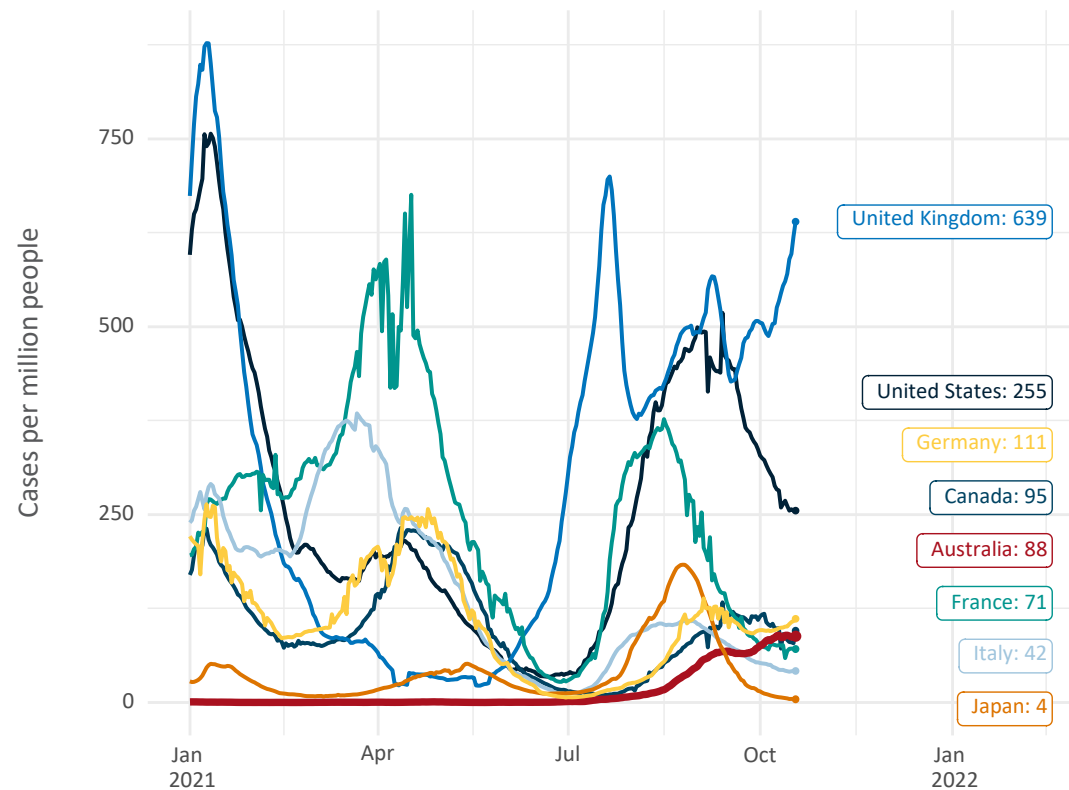


Note: From 15 September 2021, data for Australia includes all doses administered to people 12 and over. Prior to 15 September, data was for 16 and over
Source: Department of Health (Australia), Our World in Data (international)
Latest data: 19 October

Data as at:
19 Oct 2021

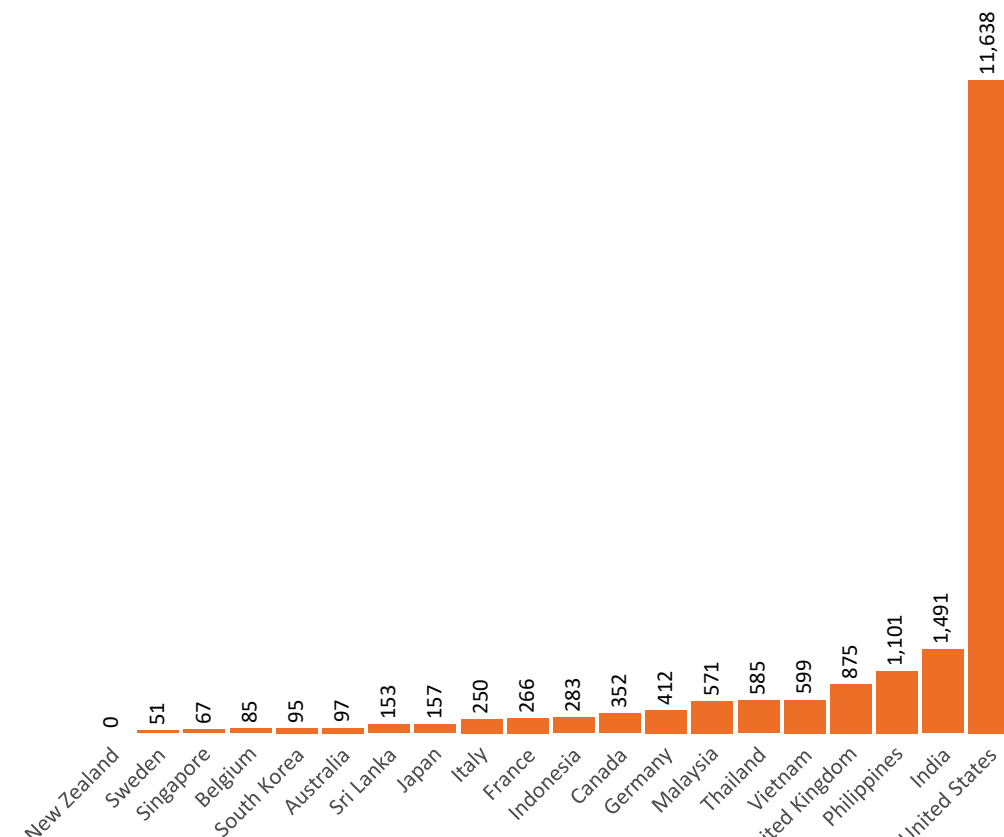
International data – COVID-19

New daily cases per million in 2021, Australia and G7 countries
Smoothed - 7 day average



Source: OWID
Data downloaded: 20 Oct 2021 08:11
Latest data: 18 Oct 2021

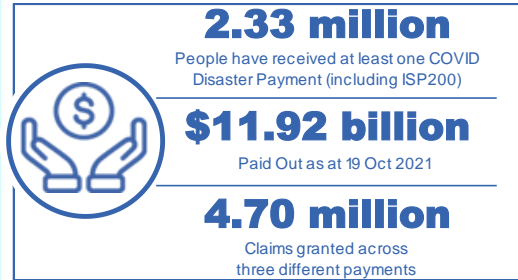
COVID-19 deaths in past 7 days - Australia and select countries



Source: OWID
Data downloaded: 20 Oct 2021 08:11
Latest data: 18 Oct 2021

Data as at midnight:
19 Oct 2021

Pandemic Response Payments



COVID Disaster Payment:	4.57 million claims received - 2.15 million individuals paid a total of \$11.53 billion.
\$200 Income Support Payment:	279,000 claims received - 177,000 individuals paid a total of \$248.35 million.
Pandemic Leave Disaster Payment:	101,000 claims received - 87,000 individuals paid a total of \$140.66 million.



COVID Disaster Payment
assisting during a lockdown event in a Commonwealth hotspot.

Income Support Payment \$200
for income support recipients who lost at least 8 hours of work.

Pandemic Leave Disaster Payment
for those who have to self-isolate, quarantine or care.

For more information visit:
servicesaustralia.gov.au

COVID-19 DISASTER PAYMENTS

