



Australian Government
Operation COVID Shield

COVID-19 Vaccine Roll-out

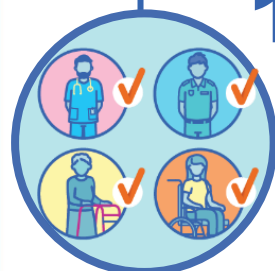
02 October 2021

Data as at:
01 Oct 2021

Total vaccine doses



28,419,347 total vaccine
doses administered nationally as at 01 October
+327,717 recorded in the last 24 hours



16,291,373

people have had at least one
dose

79.0%

of people over the age of 16
have had at least one dose



11,539,628

people are fully vaccinated

56.0%

of people over the age of 16 are
fully vaccinated

NSW
10,323,361
(+124,439 daily
increase)

VIC
7,433,985
(+91,450 daily
increase)

QLD
4,892,020
(+54,515 daily
increase)

WA
2,450,959
(+25,425 daily
increase)

TAS
606,793
(+3,884 daily
increase)

SA
1,741,165
(+17,428 daily
increase)

ACT
696,874
(+8,794 daily
increase)

NT
274,190
(+1,782 daily
increase)

*Administration state breakdown indicates state in which a vaccine was administered

**Overall dose count includes instances of more than two doses per person in a small number of cases.

Source: Australian Immunisation Register

Data as at:
01 Oct 2021

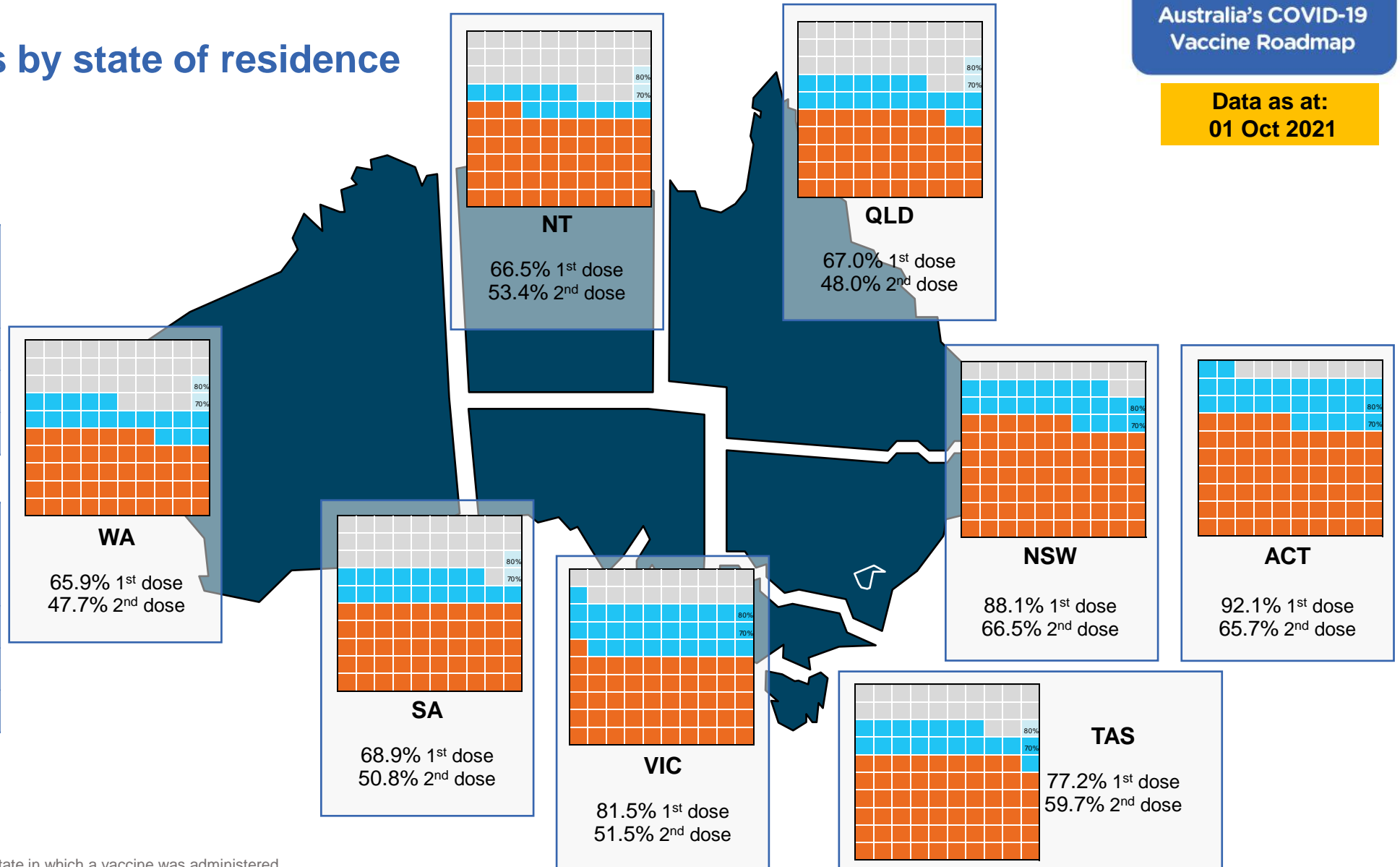
Vaccinations by state of residence

First doses

Age	Today	4 weeks ago	8 weeks ago
16+	79.0%	62.9%	44.4%
50+	89.8%	81.5%	69.6%
70+	95.0%	89.7%	82.6%

Fully vaccinated

Age	Today	4 weeks ago	8 weeks ago
16+	56.0%	38.4%	22.7%
50+	72.5%	56.9%	32.4%
70+	79.5%	67.3%	48.1%



*Residential state may differ from the state in which a vaccine was administered

Commonwealth and Jurisdiction vaccine doses administered

Data as at:
01 Oct 2021



28,419,347 total vaccine
doses administered nationally as at 01 October
+ 327,717 recorded in the last 24 hours



11,974,321
doses administered by state
and territory facilities
+ 114,454
recorded in the last 24 hours

NSW	Jurisdictions	Commonwealth
Cumulative	3,604,160	6,719,201
Daily increase	30,439	94,000

TAS	Jurisdictions	Commonwealth
Cumulative	334,760	272,033
Daily increase	2,442	1,442

VIC	Jurisdictions	Commonwealth
Cumulative	3,554,811	3,879,174
Daily increase	36,185	55,265

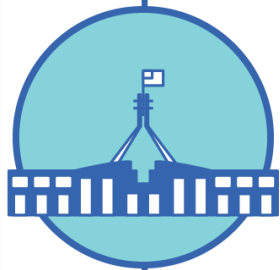
SA	Jurisdictions	Commonwealth
Cumulative	797,574	943,591
Daily increase	8,543	8,885

QLD	Jurisdictions	Commonwealth
Cumulative	1,988,101	2,903,919
Daily increase	20,216	34,299

ACT	Jurisdictions	Commonwealth
Cumulative	339,502	357,372
Daily increase	4,575	4,219

WA	Jurisdictions	Commonwealth
Cumulative	1,190,138	1,260,821
Daily increase	11,182	14,243

NT	Jurisdictions	Commonwealth
Cumulative	165,275	108,915
Daily increase	872	910

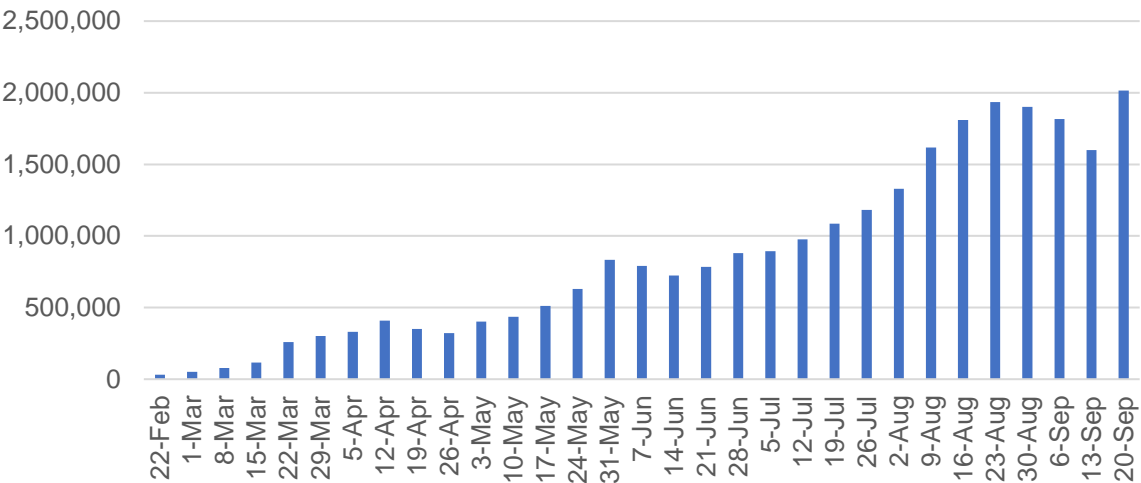


16,445,026
doses administered by
commonwealth facilities
+ 213,263
recorded in the last 24 hours

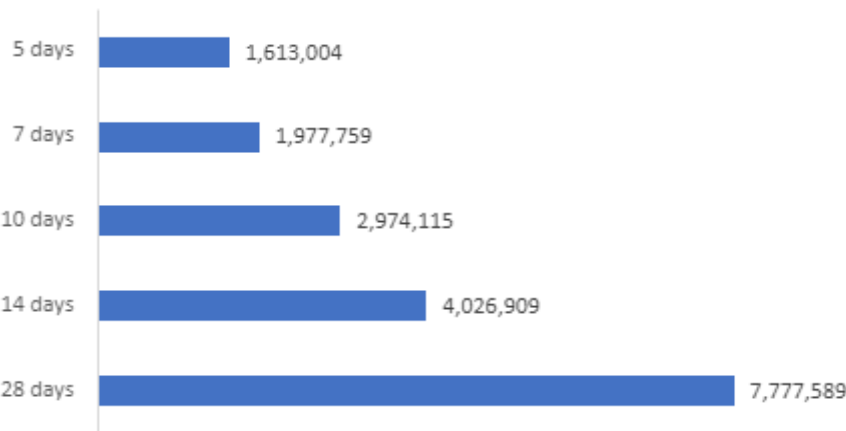
15,441,756 total vaccine doses
administered in primary care settings
1,003,270 total vaccine doses
administered in aged care and disability
settings

Vaccine milestone charts

Jabs in arms by week



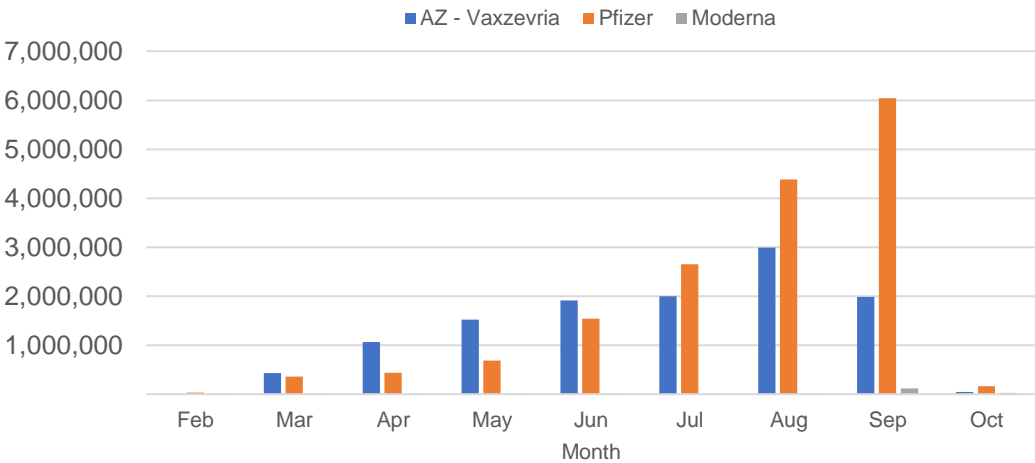
Doses reported



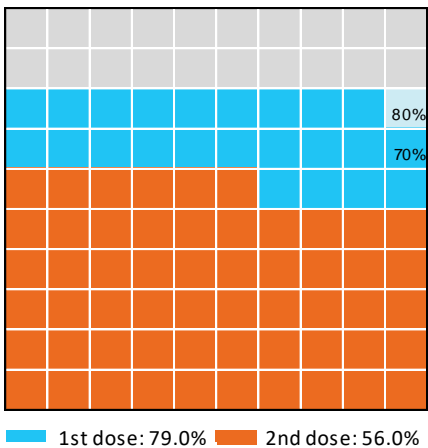
Data as at:
01 Oct 2021

Australia's COVID-19
Vaccine Roadmap

Doses by administration month and vaccine type



Eligible population percentage coverage



*Each square represents 1% of the national population. Squares are filled as milestones are achieved.

*Sourced from the Australian Immunisation Register.

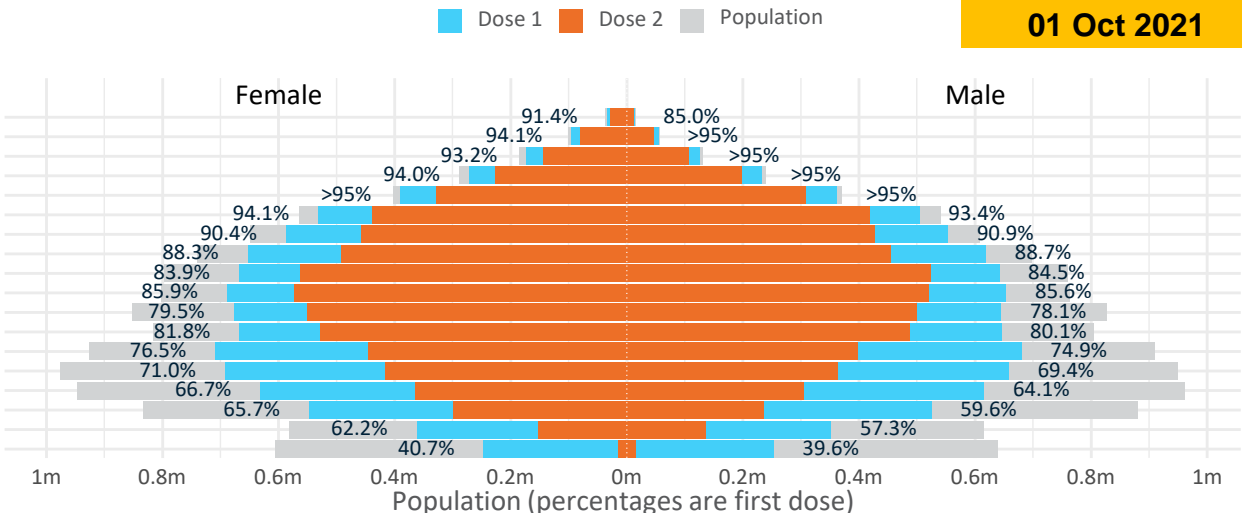
Doses by age and sex

First and second doses by age and sex

	16+	50+	70+	12-15
Dose 1	79.01% (16,291,373 doses / 20,619,959 people)	89.80% (7,857,407 doses / 8,749,703 people)	>95% (2,789,211 doses / 2,934,706 people)	40.12% (499,067 doses / 1,243,990 people)
Dose 2	55.96% (11,539,628 doses / 20,619,959 people)	72.50% (6,343,933 doses / 8,749,703 people)	79.54% (2,334,170 doses / 2,934,706 people)	2.56% (31,818 doses / 1,243,990 people)

Data as at:
01 Oct 2021

Age	Dose 1	Dose 2
95+	47,456 (89.7%)	39,592 (74.8%)
90-94	149,993 (94.7%)	125,426 (79.2%)
85-89	298,893 (94.5%)	249,541 (78.9%)
80-84	504,017 (>95%)	424,782 (80.4%)
75-79	752,310 (>95%)	636,312 (82.2%)
70-74	1,036,542 (93.8%)	858,517 (77.7%)
65-69	1,141,624 (90.7%)	884,585 (70.3%)
60-64	1,272,742 (88.6%)	946,314 (65.9%)
55-59	1,310,566 (84.2%)	1,086,315 (69.8%)
50-54	1,343,264 (85.9%)	1,092,549 (69.8%)
45-49	1,322,939 (78.9%)	1,051,340 (62.7%)
40-44	1,314,365 (81.1%)	1,016,220 (62.7%)
35-39	1,392,716 (75.9%)	844,400 (46.0%)
30-34	1,356,839 (70.5%)	783,576 (40.7%)
25-29	1,255,617 (65.9%)	674,417 (35.4%)
20-24	1,077,263 (62.9%)	536,878 (31.4%)
16-19	714,227 (59.7%)	288,864 (24.2%)
12-15	499,067 (40.1%)	31,818 (2.6%)



	AUS	ACT	NSW	NT	QLD	SA	TAS	VIC	WA
16 and over - dose 1	16,291,373	316,885	5,785,854	126,780	2,753,678	992,799	339,927	4,405,433	1,394,589
16 and over - dose 2	11,539,628	225,923	4,366,019	101,723	1,973,073	731,835	262,938	2,783,434	1,007,886
16 and over - population	20,619,959*	344,037	6,565,651	190,571	4,112,707	1,440,400	440,172	5,407,574	2,114,978
16 and over % with dose 1	79.01%	92.11%	88.12%	66.53%	66.96%	68.93%	77.23%	81.47%	65.94%
16 and over % with dose 2	55.96%	65.67%	66.50%	53.38%	47.98%	50.81%	59.74%	51.47%	47.65%
50 and over - dose 1	7,857,407	129,049	2,652,162	48,205	1,476,652	569,985	194,254	2,000,987	737,488
50 and over - dose 2	6,343,933	112,545	2,199,092	40,250	1,162,056	442,491	162,310	1,615,007	577,607
50 and over - population	8,749,703	127,802	2,807,793	62,280	1,758,855	674,384	220,036	2,211,211	885,370
50 and over % with dose 1	89.80%	>95%	94.46%	77.40%	83.96%	84.52%	88.28%	90.49%	83.30%
50 and over % with dose 2	72.50%	88.06%	78.32%	64.63%	66.07%	65.61%	73.77%	73.04%	65.24%
70 and over - dose 1	2,789,211	42,136	938,802	10,337	531,121	221,155	73,033	697,767	255,046
70 and over - dose 2	2,334,170	37,226	803,353	8,657	440,759	176,064	62,126	584,478	206,502
70 and over - population	2,934,706	39,946	962,606	12,343	577,767	240,514	77,155	743,519	280,281
70 and over % with dose 1	>95%	>95%	>95%	83.75%	91.93%	91.95%	94.66%	93.85%	91.00%
70 and over % with dose 2	79.54%	93.19%	83.46%	70.14%	76.29%	73.20%	80.52%	78.61%	73.68%
12 to 15 - dose 1	499,067	12,163	218,608	4,127	69,911	14,962	4,131	150,676	21,561
12 to 15 - dose 2	31,818	656	18,032	1,571	5,019	545	530	4,399	832
12 to 15 - population	1,243,990	19,693	390,330	13,060	270,146	82,747	26,308	308,611	132,869
12 to 15 % with dose 1	40.12%	61.76%	56.01%	31.60%	25.88%	18.08%	15.70%	48.82%	16.23%
12 to 15 % with dose 2	2.56%	3.33%	4.62%	12.03%	1.86%	0.66%	2.01%	1.43%	0.63%

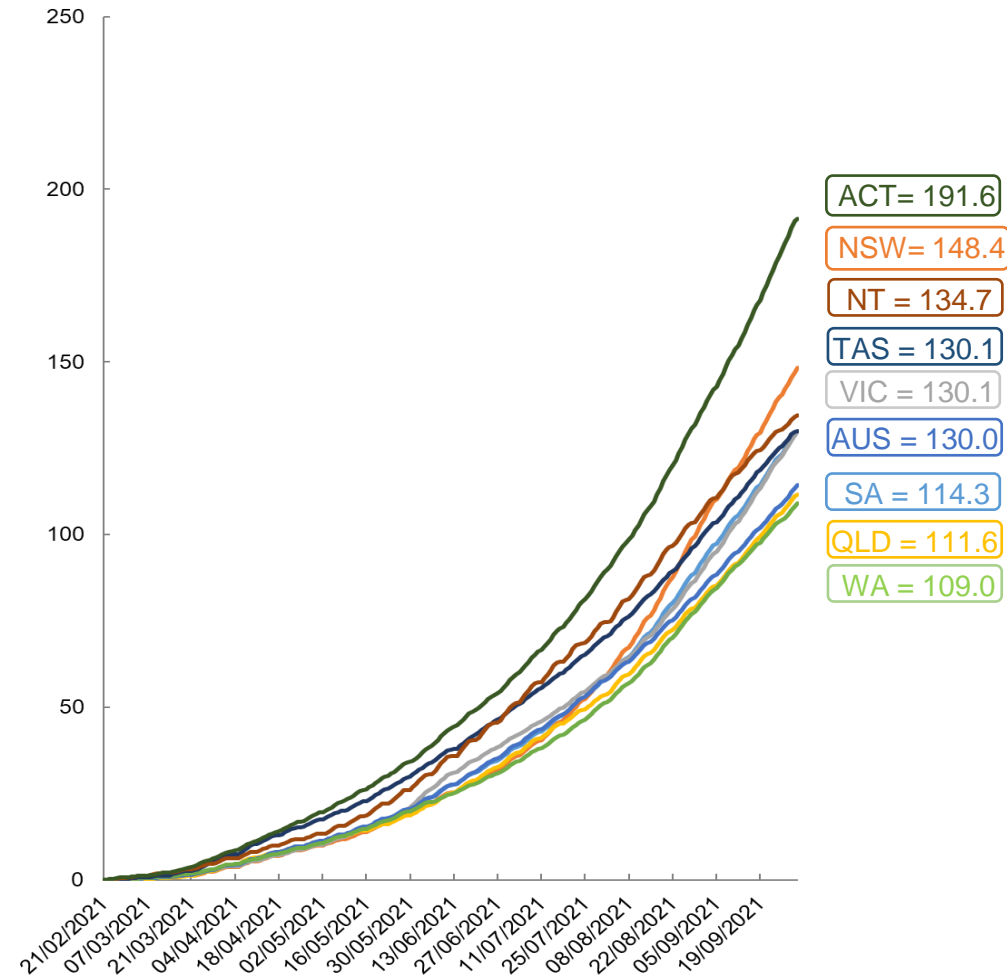
*National population will not equal sum of listed jurisdictions due to a small number of people counted in national population residing in some 'other' territories. Sum of state doses will not add to national total as some records are unable to be geocoded to a State or Territory.
Doses sourced from Australian Immunisation Register, population from ABS ERP June 2020

Vaccinations by location

Data as at:
01 Oct 2021

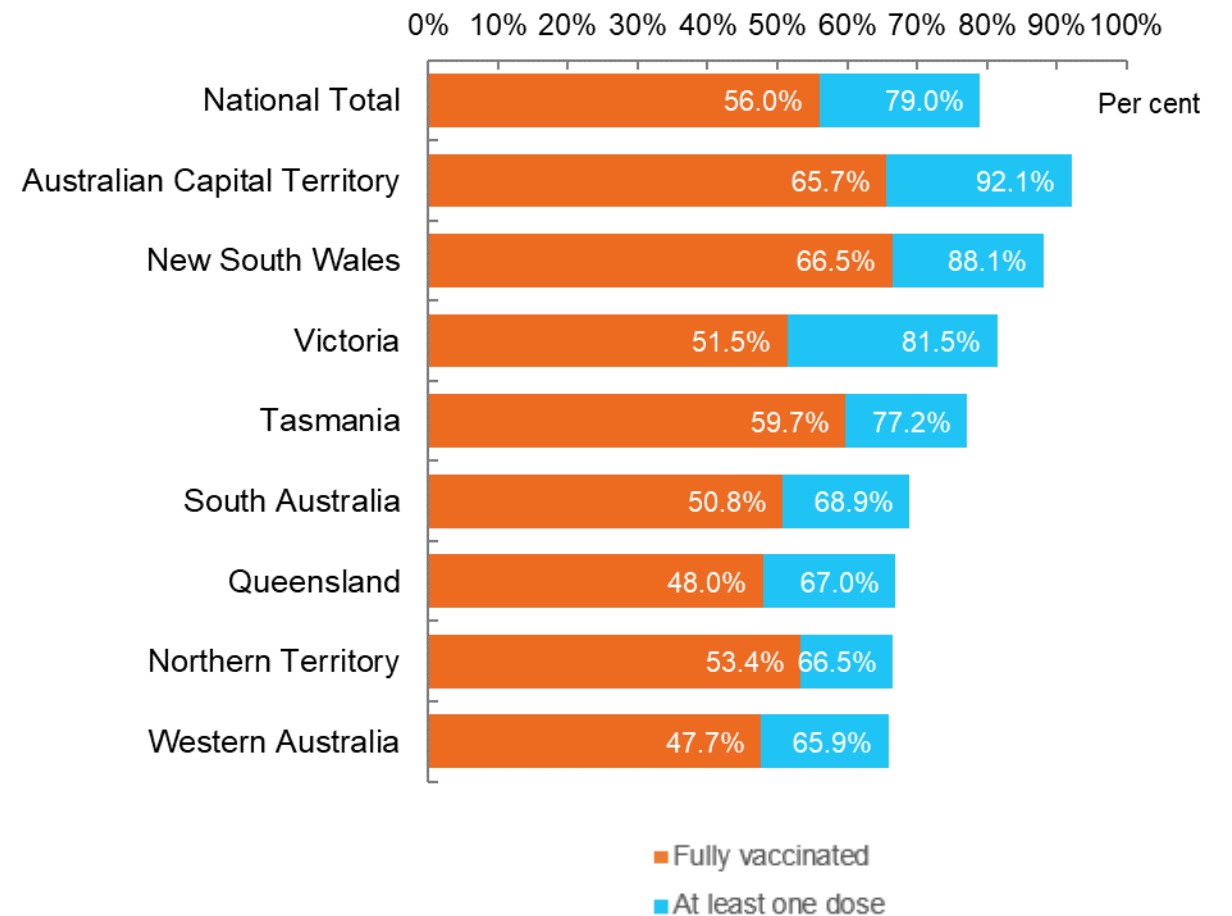
Australia's COVID-19
Vaccine Roadmap

Cumulative total doses administered vs state populations**



*Not an indication of percentage vaccinated, numbers will exceed 100 due to multiple doses required per person of the population
State populations adjusted to include 12-15 year olds

First and Second Doses by state of residence



Aboriginal and Torres Strait Islander peoples

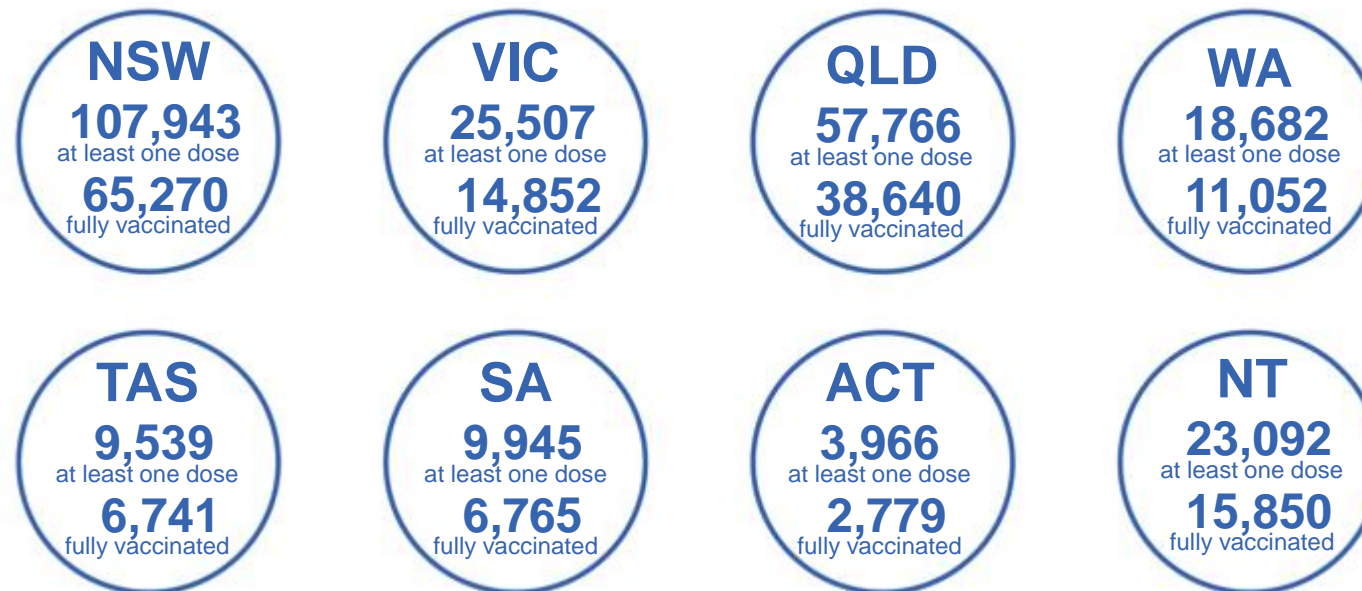
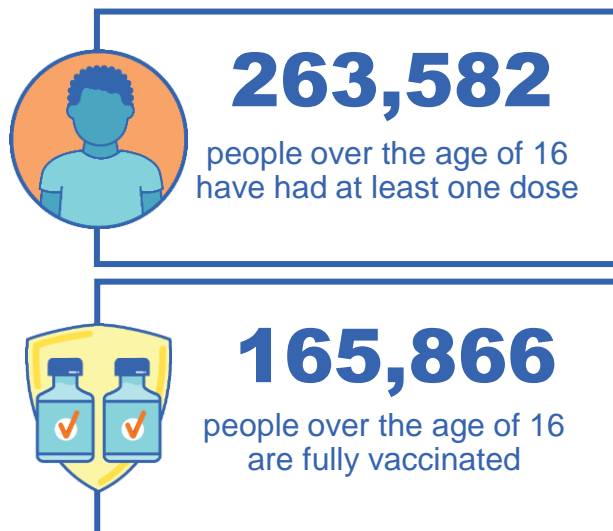
Number of people vaccinated

Data as at:
26 Sept 2021
Updated weekly

Australia's COVID-19
Vaccine Roadmap

167 Aboriginal community controlled health services (ACCHS)

0#	48	26	39	12	3	21	18
ACT	NSW	NT	QLD	SA	TAS	VIC	WA



7,142 people with at least one dose
3,917 people fully vaccinated

*Identifying as Aboriginal and Torres Strait Islander is optional and the estimated population may be under reported.

**Includes all Aboriginal and Torres Strait Islander peoples who have received a vaccination, not limited to those administered in an ACCHS setting

***Updated weekly.

#ACCHS in the ACT are currently operating as a Commonwealth Vaccine Clinics so not included to avoid double counting

residing in other territories or with missing residential information

Source: Australian Immunisation Register

Data as at:
01 Oct 2021

Commonwealth primary care



Primary care vaccine administration sites

5,506	137	167	3,233
GPs	CVCs	ACCHS	Pharmacies



15,441,756 total vaccine doses administered primary care settings as at 01 October
+ 204,070 recorded in the last 24 hours

Primary care vaccinations by provider type

	Doses administered	Daily increase	7 day increase
General Practice* includes other Commonwealth	14,576,266	164,219	997,314
Pharmacy	865,490	39,851	195,133



85,096 doses administered to persons residing in other territories or with missing residential information

*General practice includes Commonwealth Vaccination Clinics, Aboriginal Community Health Centres, Royal Flying Doctor Service and other Commonwealth vaccination facilities

Source: Australian Immunisation Register

Data as at:
01 Oct 2021

Commonwealth aged care and disability doses administered



1,003,270 (+ 9,193 last 24 hours)

Total vaccine doses administered in aged care and disability facilities as at 01 October

Number of doses administered as part of the Commonwealth aged and disability care rollout

NSW
471,317
(+4,690 daily increase)

VIC
182,498
(+863 daily increase)

QLD
171,183
(+3,015 daily increase)

WA
63,376
(+202 daily increase)

TAS
16,708
(+11 daily increase)

SA
57,011
(+193 daily increase)

ACT
11,810
(+120 daily increase)

NT
5,675
(+16 daily increase)

*Sourced from the Australian Immunisation Register. Includes all persons vaccinated at participating residential aged care, disability and related industry settings.

**State level breakdown indicates the residential location and may not align to the state in which the vaccination occurred.

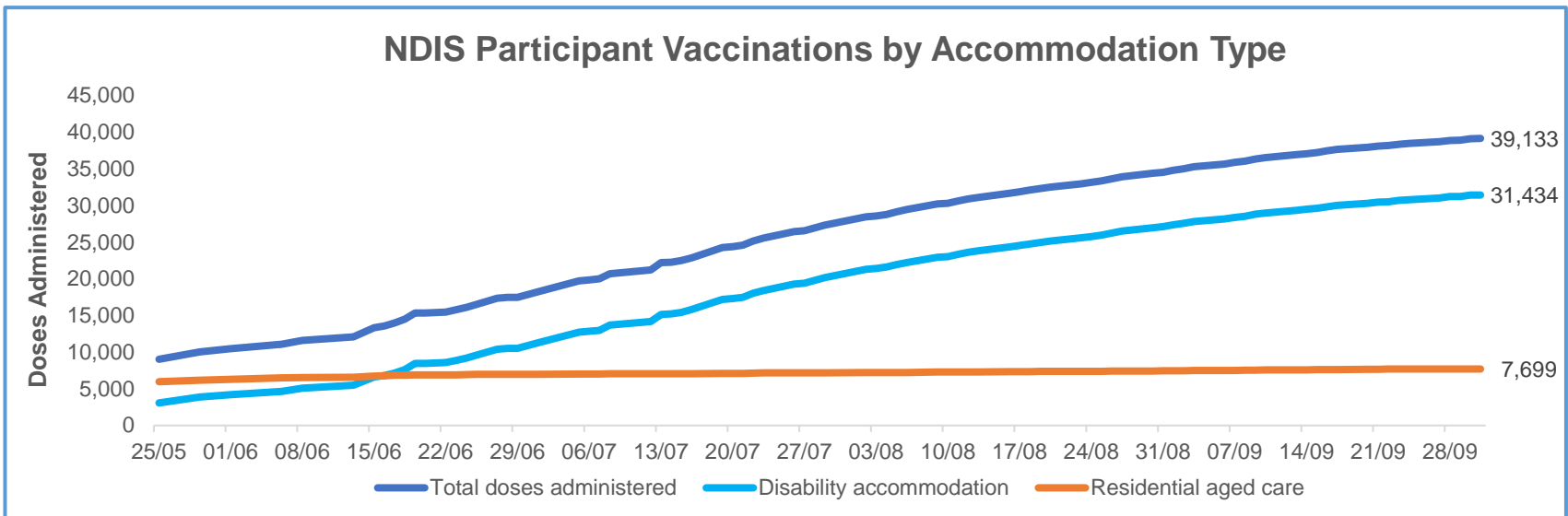
23,692

doses administered to persons residing in other territories or with missing residential information

Data as at:
01 Oct 2021*

Vaccination rate of people with disability and the disability workforce

Phase 1a – People with disability living in shared accommodation



	Total people with at least one dose	People fully vaccinated	Total number of individuals in cohort	Total doses administered	% People with at least one dose	% People fully vaccinated
NDIS participants living in shared accommodation **	20,707	18,426	27,293	39,133	75.9%	67.5%
NDIS screened workers ***	149,908	121,773	200,500	271,681	74.8%	60.7%

* Updates are available Monday to Friday on participants, and bi-weekly for workers, numbers may be up to four days old.

** Shared accommodation means two or more people with disability living in shared residential accommodation and NDIS participants living in Residential Aged Care accommodation as per the eligibility criteria of Phase 1a.

*** Total number of workers within the NDIS Commission Worker Screening database who have ever been successfully screened and linked to an NDIS registered provider or participant.

Source: Linkage between National Disability Insurance Agency data, NDIS Quality and Safeguards Commission data and the Australian Immunisation Register.



Residential aged care vaccination rollout

Residential aged care facilities status

100%
Commonwealth facilities visited (2,573 planned sites)

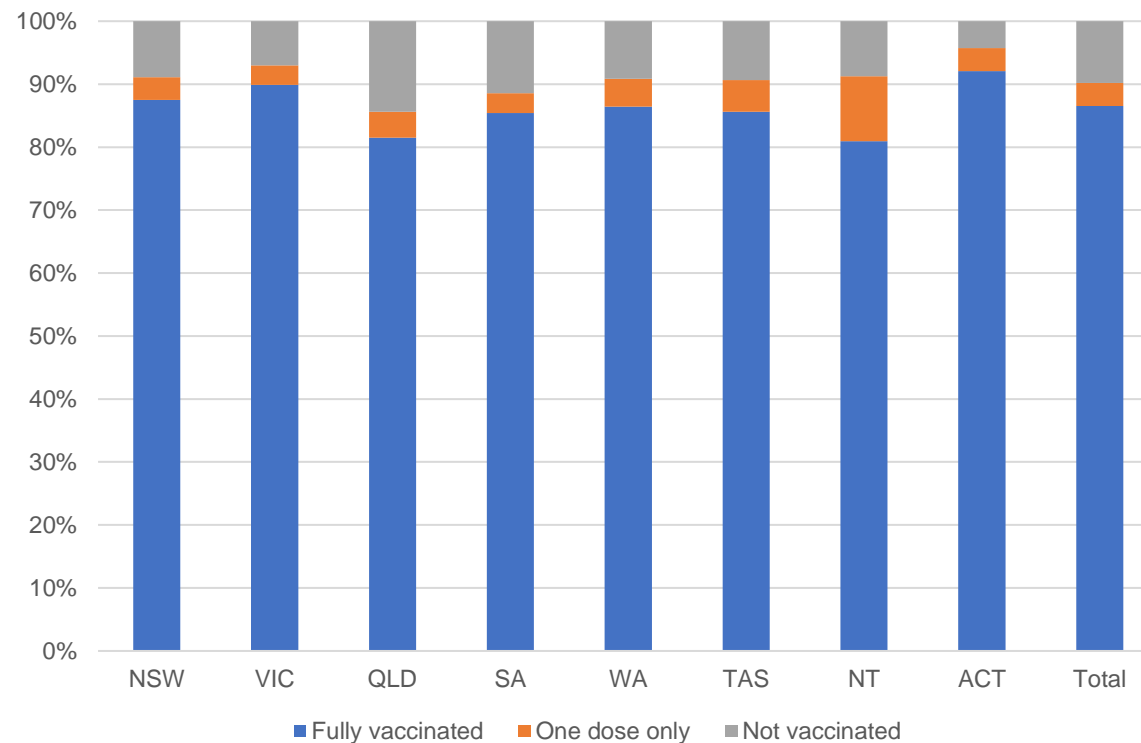
161,134
People fully vaccinated

90.2%
Participation rate

Australia's COVID-19 Vaccine Roadmap

Data as at:
01 Oct 2021

Aged care resident vaccinations



Aged care worker vaccinations

Jurisdictions	Total workers with at least one dose	Workers fully vaccinated	% Workers with at least one dose	% Workers fully vaccinated
NSW	78,477	68,261	99.5%	86.5%
VIC	70,844	60,708	99.0%	84.8%
QLD	47,525	38,305	99.2%	80.0%
SA	26,759	22,917	99.5%	85.2%
WA	23,204	17,737	99.6%	76.1%
TAS	7,483	6,385	99.9%	85.2%
NT	801	769	99.3%	95.3%
ACT	2,930	2,637	99.9%	89.9%
Total	258,023	217,719	99.3%	83.8%

Source: My Aged Care Portal staff vaccination progress

**Resident vaccination information is reported manually by service providers

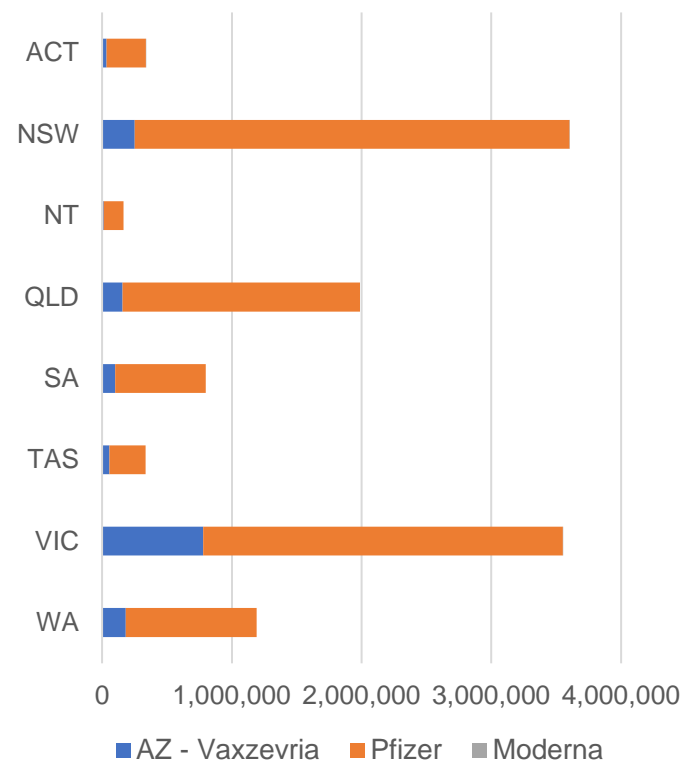
*Status updates are provided by facilities at least once per week. Reporting is updated Monday to Friday to encompass different facility updates being made on different days.

Data is sourced directly from Aged Care Service Providers and is not drawn or closely aligned with data from AIR due to inconsistencies and potential lags in uploading of records.

Data as at:
01 Oct 2021

Jurisdiction administered

Total vaccine doses administered in State and Territory clinics as at 01 October



11,974,321 total vaccine doses administered
in State and Territory clinics as at 01 October
+ **114,454** recorded in the last 24 hours
+ **743,434** recorded in the last 7 days

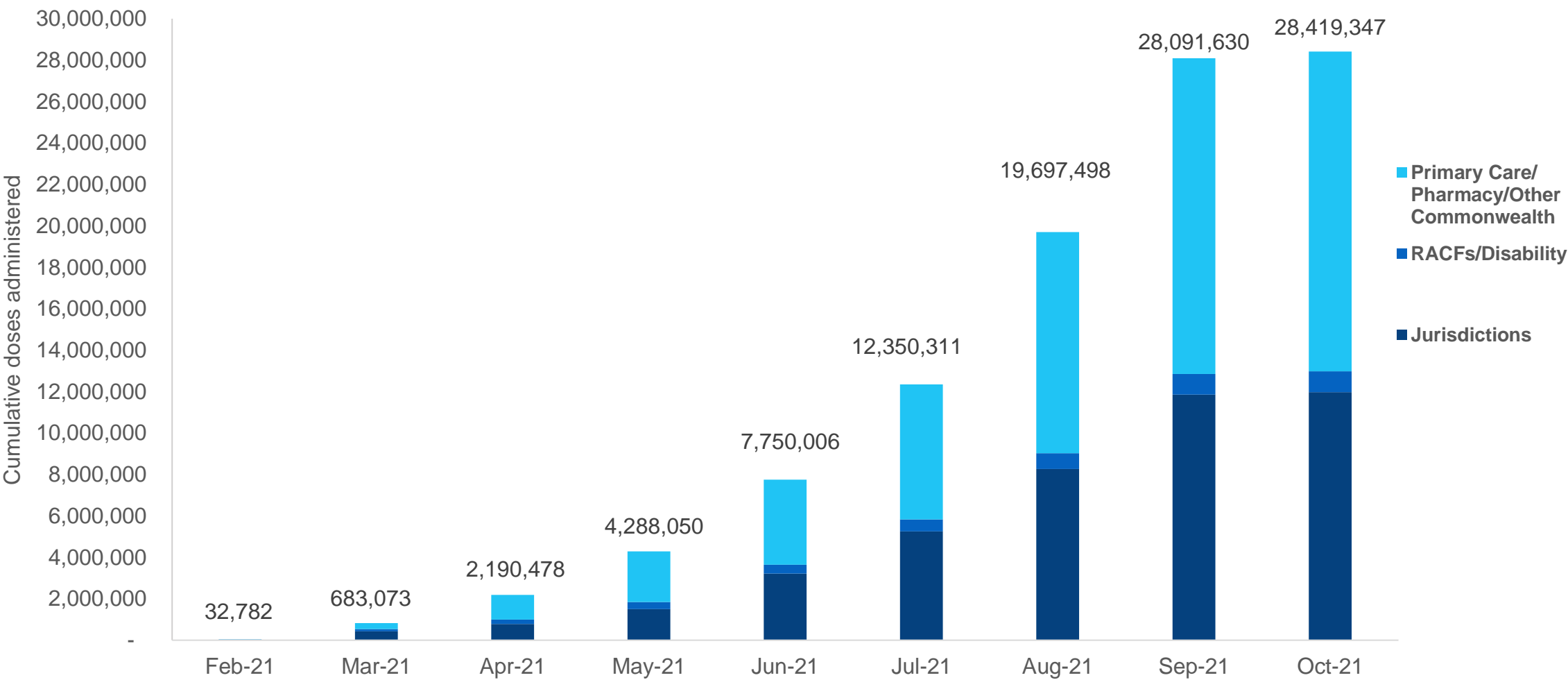


*Sourced from the Australian Immunisation Register and self-reported data. Numbers are calculated as difference in daily cumulative reported numbers to allow for historical corrections in all self-reported data sources.

Source: Australian Immunisation Register

Cumulative doses administered by channel

Data as at:
01 Oct 2021



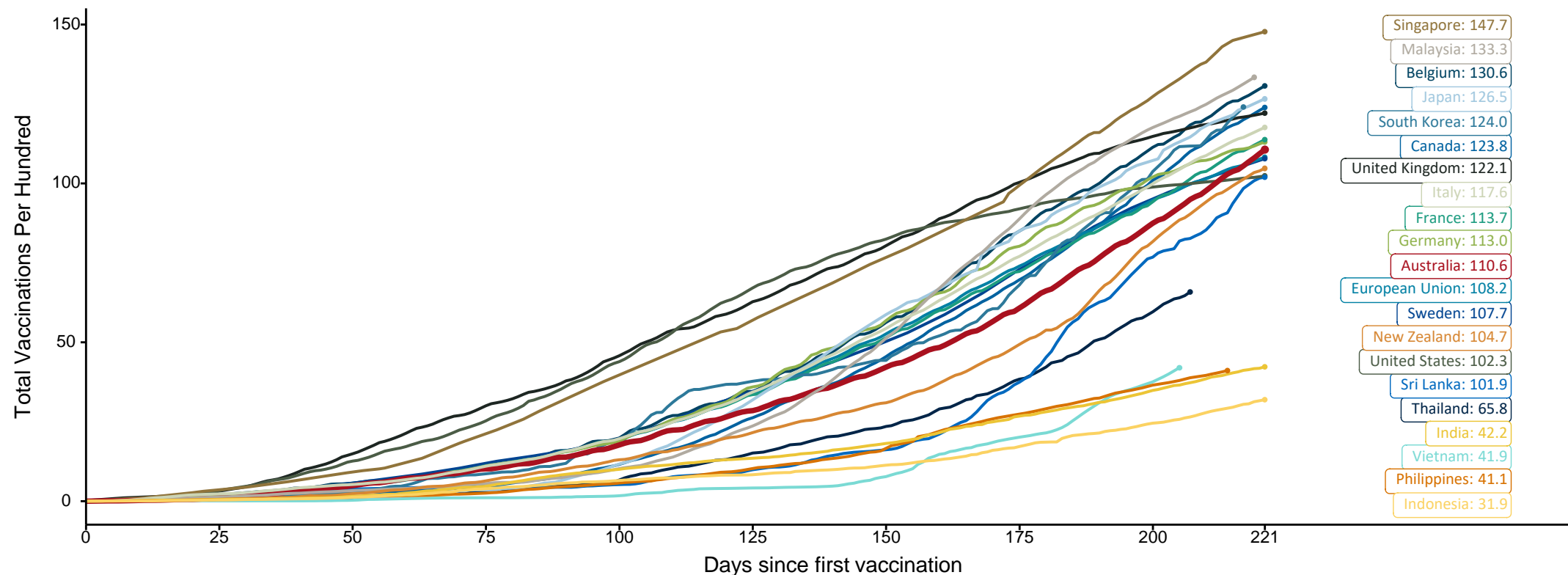
Source: Australian Immunisation Register

Doses at equivalent stages of rollout (Day 221)

Data as at:
01 Oct 2021

The x-axis is truncated at the length of Australia's vaccination program. Countries with intermittent reporting have had their doses per 100 imputed to Australia's current stage of rollout. Israel excluded as it is beyond scale of the graph

Cumulative doses administered (01 Oct): **28,419,347**

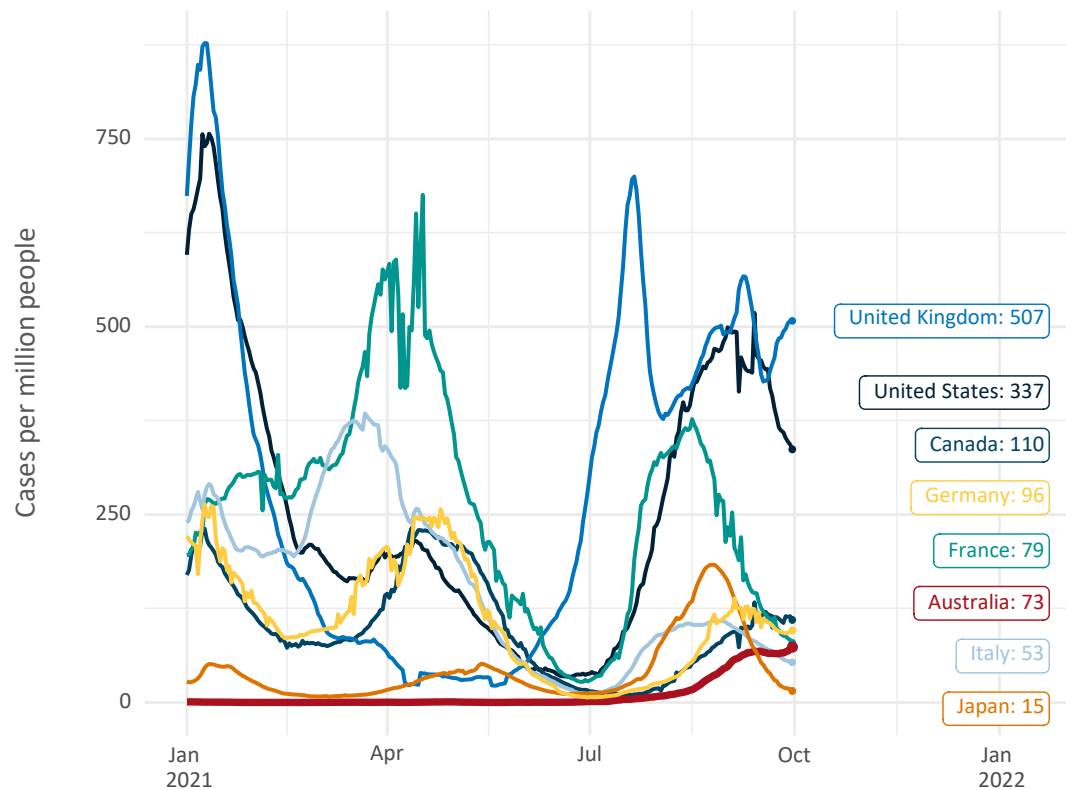


Note: From 15 September 2021, data for Australia includes all doses administered to people 12 and over. Prior to 15 September, data was for 16 and over
Source: Department of Health (Australia), Our World in Data (international)
Latest data: 01 October

International data – COVID-19

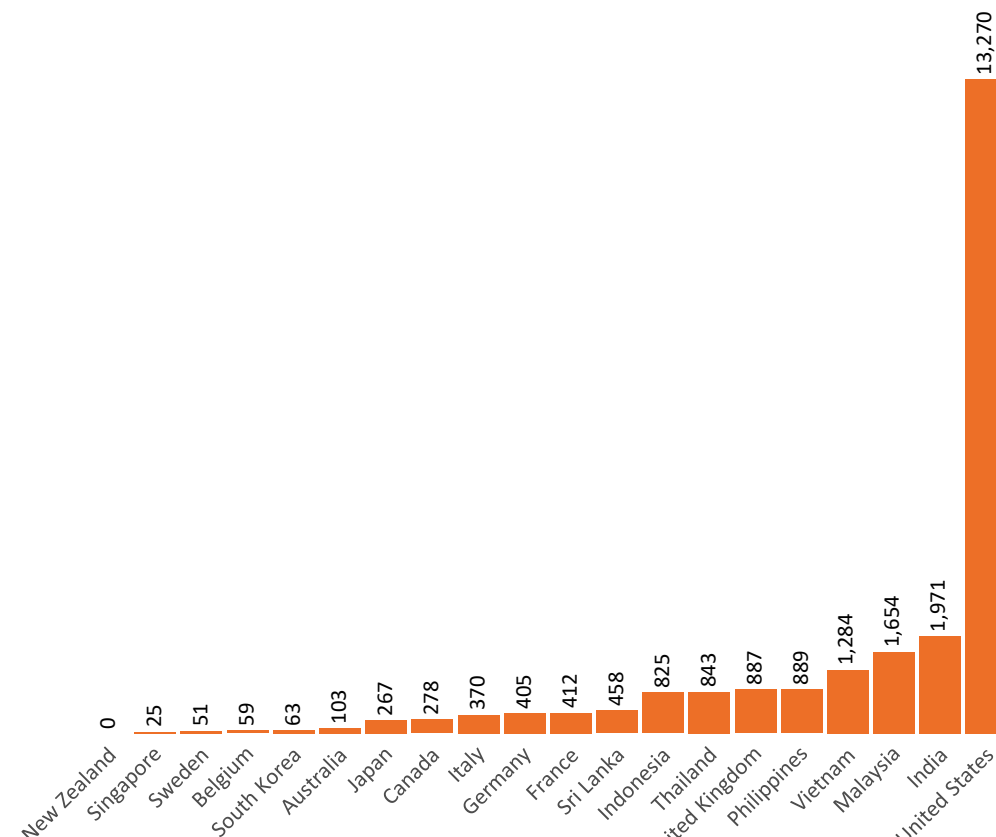
Data as at:
01 Oct 2021

New daily cases per million in 2021, Australia and G7 countries
Smoothed - 7 day average



Source: OWID
Data downloaded: 02 Oct 2021 09:01
Latest data: 30 Sep 2021

COVID-19 deaths in past 7 days - Australia and select countries



Source: OWID
Data downloaded: 02 Oct 2021 09:01
Latest data: 30 Sep 2021

Pandemic Response Payments

Australia's COVID-19
Vaccine Roadmap

Data as at midnight:
1 Oct 2021



COVID Disaster Payment:	3.80 million claims received - 2.07 million individuals paid a total of \$9.62 billion.
\$200 Income Support Payment:	238,000 claims received - 168,000 individuals paid a total of \$195.84 million.
Pandemic Leave Disaster Payment:	78,000 claims received - 68,000 individuals paid a total of \$107.32 million.



COVID Disaster Payment

assisting during a lockdown
event in a Commonwealth
hotspot.

Income Support Payment \$200

for income support
recipients who lost at
least 8 hours of work.

Pandemic Leave Disaster Payment

for those who have
to self-isolate,
quarantine or care.

For more information visit:
servicesaustralia.gov.au

COVID-19 DISASTER PAYMENTS

New South Wales

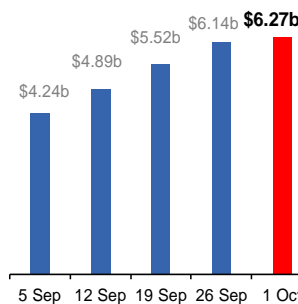
Active lockdown since 24 Jun

**1.06m people have
received at least one
COVID Disaster Payment.**

**\$6.27b paid out as at
1 Oct 2021.**

**\$613m paid in initial and
reoccurring payments in the
week ending 26 Sep 2021.**

Cumulative payments made by State since
activation on 1 Jul 2021.



Victoria

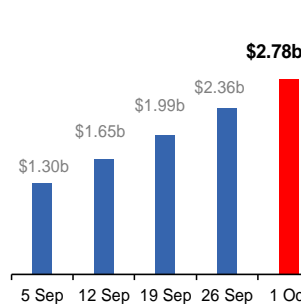
Active lockdown (#6) since 6 Aug

**662,000 people have
received at least one
COVID Disaster Payment.**

**\$2.78b paid out as at
1 Oct 2021.**

**\$378m paid in initial and
reoccurring payments in the
week ending 26 Sep 2021.**

Cumulative payments made by State since
activation on 8 Jun 2021.



Australian Capital Territory

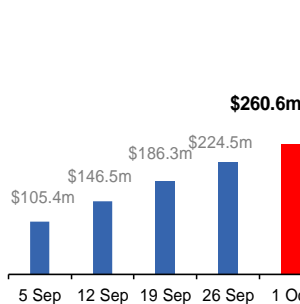
Active lockdown since 12 Aug

**63,000 people have
received at least one
COVID Disaster Payment.**

**\$260.6m paid out as at
1 Oct 2021.**

**\$38m paid in initial and
reoccurring payments in the
week ending 26 Sep 2021.**

Cumulative payments made by State since
activation on 20 Aug 2021.



Northern Territory

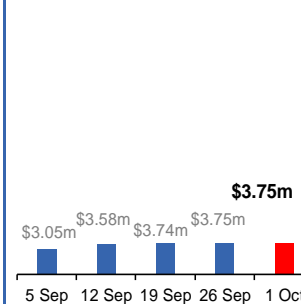
Lockdown from 18 – 20 Jul
Claiming period ended 13 Sep

**5,787 people have
received at least one
COVID Disaster Payment.**

**\$3.75m paid out as at
1 Oct 2021.**

**\$7,000 paid in initial
payments in the week
ending 26 Sep 2021.**

Cumulative payments made by State since
activation on 25 Aug 2021.



Queensland

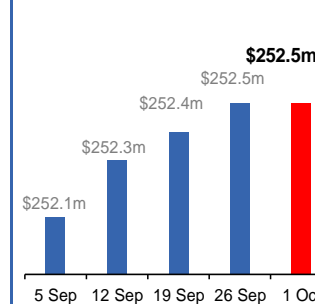
Lockdown from 31 Jul – 11 Aug
Claiming period ended 28 Aug

**196,000 people have
received at least one
COVID Disaster Payment.**

**\$252.5m paid out as at
1 Oct 2021.**

**\$40,000 paid in initial and
reoccurring payments in the
week ending 26 Sep 2021.**

Cumulative payments made by State since
activation on 7 Aug 2021.



South Australia

Lockdown from 21 – 27 Jul
Claiming period ended 17 Aug

**86,000 people have
received at least one
COVID Disaster Payment.**

**\$48.2m paid out as at
1 Oct 2021.**

**\$2,000 paid in initial
payments in the week
ending 26 Sep 2021.**

Cumulative payments made by State since
activation on 28 Jul 2021.

