



**Australian Government**  
**Operation COVID Shield**

# COVID-19 Vaccine Roll-out

17 October 2021

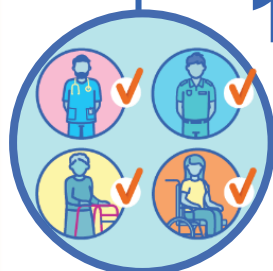


Data as at:  
16 Oct 2021

## Total vaccine doses



**32,494,119** total vaccine  
doses administered nationally as at 16 October  
**+197,684** recorded in the last 24 hours



**17,447,652**

people have had at least one  
dose

**84.6%**

of people over the age of 16  
have had at least one dose



**13,989,722**

people are fully vaccinated

**67.8%**

of people over the age of 16 are  
fully vaccinated

**NSW**  
**11,658,338**  
(+49,114 daily  
increase)

**VIC**  
**8,737,605**  
(+77,225 daily  
increase)

**QLD**  
**5,538,654**  
(+29,557 daily  
increase)

**WA**  
**2,807,448**  
(+18,018 daily  
increase)

**TAS**  
**680,210**  
(+4,799 daily  
increase)

**SA**  
**1,972,963**  
(+11,678 daily  
increase)

**ACT**  
**803,189**  
(+6,388 daily  
increase)

**NT**  
**295,712**  
(+905 daily  
increase)

\*Administration state breakdown indicates state in which a vaccine was administered

\*\*Overall dose count includes instances of more than two doses per person in a small number of cases.

Source: Australian Immunisation Register



Data as at:  
16 Oct 2021

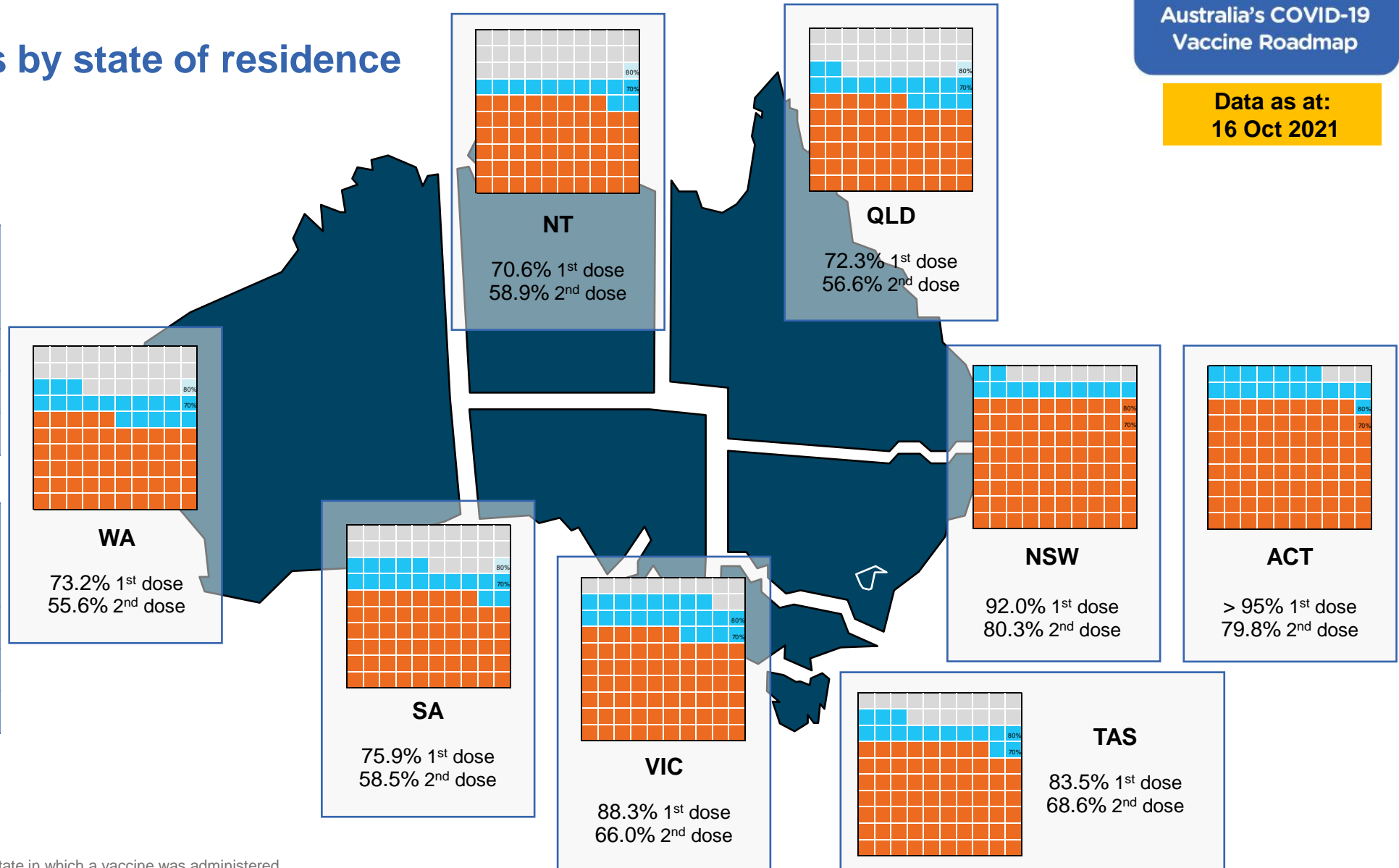
## Vaccinations by state of residence

### First doses

Age	Today	4 weeks ago	8 weeks ago
16+	84.6%	72.5%	53.4%
50+	93.0%	86.6%	76.2%
70+	>95%	93.2%	86.8%

### Fully vaccinated

Age	Today	4 weeks ago	8 weeks ago
16+	67.8%	47.3%	30.9%
50+	79.7%	66.5%	45.4%
70+	85.1%	75.1%	58.7%



\*Residential state may differ from the state in which a vaccine was administered



## Commonwealth and Jurisdiction vaccine doses administered

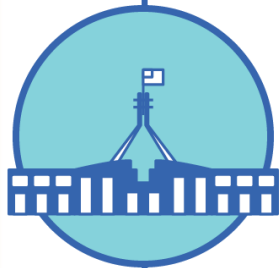
Data as at:  
16 Oct 2021



**32,494,119** total vaccine  
doses administered nationally as at 16 October  
**+ 197,684** recorded in the last 24 hours



**13,489,174**  
doses administered by state  
and territory facilities  
**+ 84,480**  
recorded in the last 24 hours



**19,004,945**  
doses administered by  
commonwealth facilities  
**+ 113,204**  
recorded in the last 24 hours

**17,924,448** total vaccine doses  
administered in primary care settings  
**1,080,497** total vaccine doses  
administered in aged care and disability  
settings

NSW	Jurisdictions	Commonwealth
Cumulative	3,924,959	7,733,379
Daily increase	9,804	39,310

VIC	Jurisdictions	Commonwealth
Cumulative	4,091,537	4,646,068
Daily increase	36,530	40,695

QLD	Jurisdictions	Commonwealth
Cumulative	2,242,559	3,296,095
Daily increase	14,929	14,628

WA	Jurisdictions	Commonwealth
Cumulative	1,358,524	1,448,924
Daily increase	8,966	9,052

TAS	Jurisdictions	Commonwealth
Cumulative	377,066	303,144
Daily increase	2,759	2,040

SA	Jurisdictions	Commonwealth
Cumulative	920,101	1,052,862
Daily increase	7,220	4,458

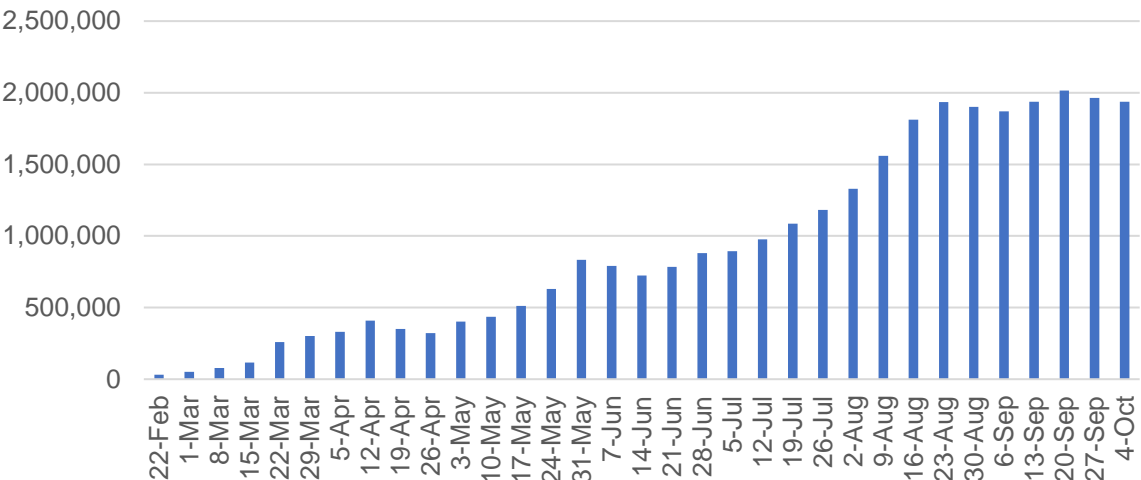
ACT	Jurisdictions	Commonwealth
Cumulative	396,125	407,064
Daily increase	3,498	2,890

NT	Jurisdictions	Commonwealth
Cumulative	178,303	117,409
Daily increase	774	131

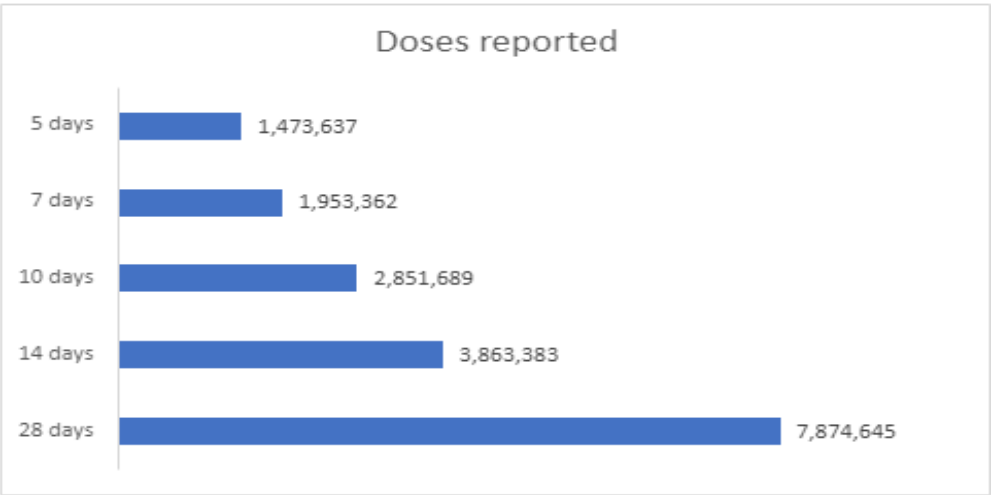


# Vaccine milestone charts

Jabs in arms by week



Doses reported

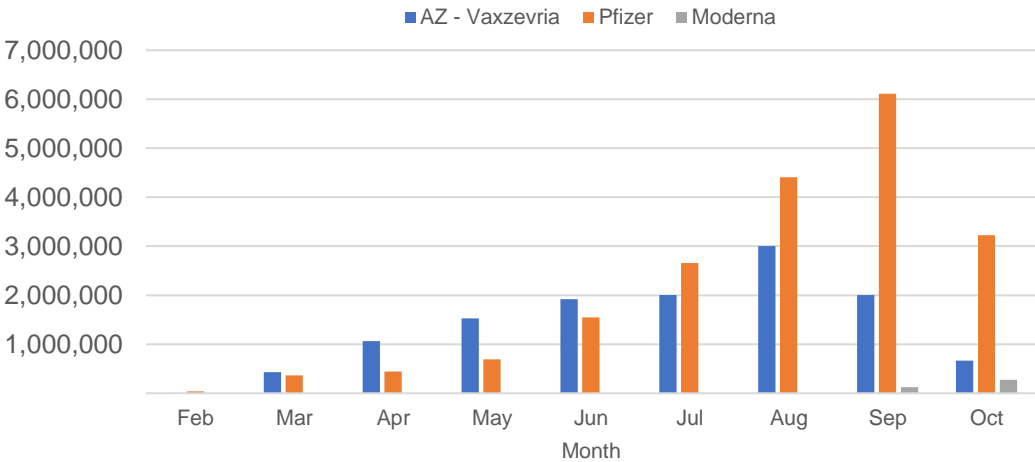


\*Sourced from the Australian Immunisation Register.

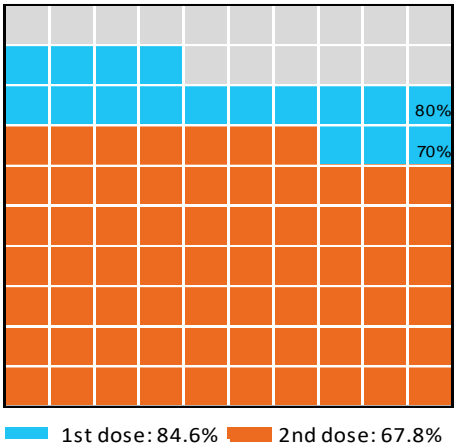
Data as at:  
16 Oct 2021

Australia's COVID-19  
Vaccine Roadmap

Doses by administration month and vaccine type



Eligible population percentage coverage



\*Each square represents 1% of the national population. Squares are filled as milestones are achieved.



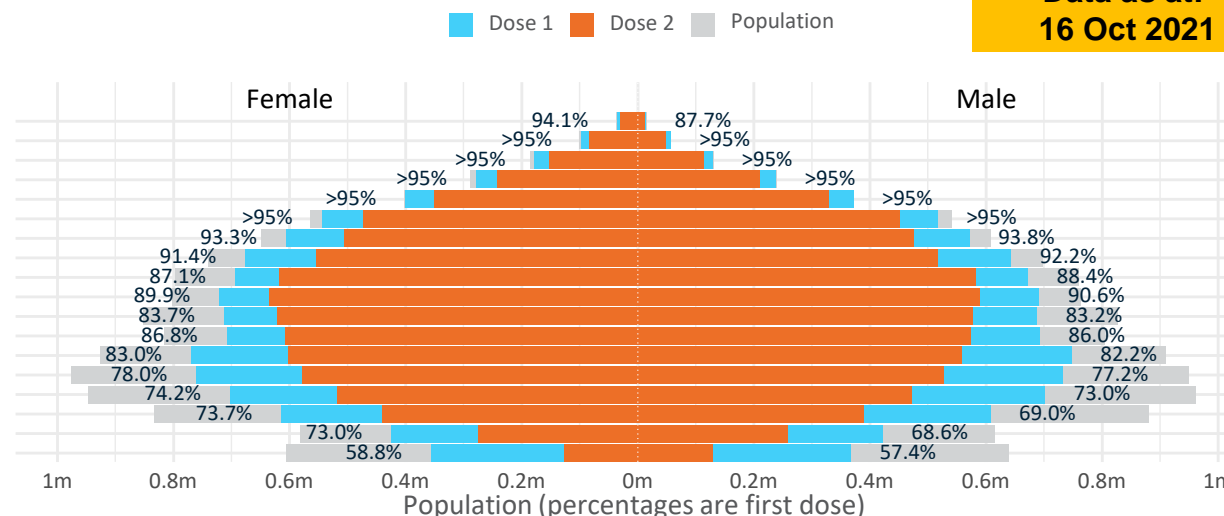
# Doses by age and sex

First and second doses by age and sex

Australia's COVID-19  
Vaccine Roadmap

Data as at:  
16 Oct 2021

Age	Dose 1	Dose 2
95+	48,899 (92.4%)	41,735 (78.9%)
90-94	153,727 (>95%)	132,972 (83.9%)
85-89	306,894 (>95%)	265,967 (84.1%)
80-84	516,539 (>95%)	452,881 (85.7%)
75-79	771,895 (>95%)	680,310 (87.9%)
70-74	1,061,179 (>95%)	923,003 (83.5%)
65-69	1,178,225 (93.6%)	981,996 (78.0%)
60-64	1,320,418 (91.9%)	1,071,381 (74.6%)
55-59	1,366,836 (87.9%)	1,201,031 (77.2%)
50-54	1,413,627 (90.4%)	1,225,206 (78.3%)
45-49	1,401,084 (83.6%)	1,199,248 (71.5%)
40-44	1,402,101 (86.5%)	1,182,465 (73.0%)
35-39	1,520,579 (82.9%)	1,161,537 (63.3%)
30-34	1,499,593 (78.0%)	1,109,637 (57.7%)
25-29	1,413,035 (74.1%)	994,724 (52.2%)
20-24	1,226,547 (71.6%)	832,449 (48.6%)
16-19	846,474 (70.8%)	533,180 (44.6%)
12-15	722,571 (58.1%)	255,684 (20.6%)



	AUS	ACT	NSW	NT	QLD	SA	TAS	VIC	WA
16 and over - dose 1	17,447,652	335,502	6,041,780	134,467	2,972,044	1,093,914	367,365	4,774,325	1,547,125
16 and over - dose 2	13,989,722	274,549	5,273,024	112,299	2,326,888	842,523	301,816	3,568,971	1,176,319
16 and over - population	20,619,959*	344,037	6,565,651	190,571	4,112,707	1,440,400	440,172	5,407,574	2,114,978
16 and over % with dose 1	84.62%	>95%	92.02%	70.56%	72.26%	75.95%	83.46%	88.29%	73.15%
16 and over % with dose 2	67.85%	79.80%	80.31%	58.93%	56.58%	58.49%	68.57%	66.00%	55.62%
50 and over - dose 1	8,138,239	131,488	2,716,633	49,903	1,530,182	594,780	201,173	2,089,931	774,561
50 and over - dose 2	6,976,482	118,985	2,450,983	43,289	1,278,547	484,281	173,244	1,761,357	629,934
50 and over - population	8,749,703	127,802	2,807,793	62,280	1,758,855	674,384	220,036	2,211,211	885,370
50 and over % with dose 1	93.01%	>95%	>95%	80.13%	87.00%	88.20%	91.43%	94.52%	87.48%
50 and over % with dose 2	79.73%	93.10%	87.29%	69.51%	72.69%	71.81%	78.73%	79.66%	71.15%
70 and over - dose 1	2,859,133	42,741	957,280	10,623	542,919	227,566	74,778	719,475	263,704
70 and over - dose 2	2,496,868	39,010	869,467	9,234	470,190	188,716	64,942	620,016	219,535
70 and over - population	2,934,706	39,946	962,606	12,343	577,767	240,514	77,155	743,519	280,281
70 and over % with dose 1	>95%	>95%	>95%	86.06%	93.97%	94.62%	>95%	>95%	94.09%
70 and over % with dose 2	85.08%	>95%	90.32%	74.81%	81.38%	78.46%	84.17%	83.39%	78.33%
12 to 15 - dose 1	722,571	18,395	290,868	5,298	102,510	28,039	9,677	221,015	42,446
12 to 15 - dose 2	255,684	5,366	132,604	2,914	35,255	6,747	2,260	60,998	8,332
12 to 15 - population	1,243,990	19,693	390,330	13,060	270,146	82,747	26,308	308,611	132,869
12 to 15 % with dose 1	58.08%	93.41%	74.52%	40.57%	37.95%	33.89%	36.78%	71.62%	31.95%
12 to 15 % with dose 2	20.55%	27.25%	33.97%	22.31%	13.05%	8.15%	8.59%	19.77%	6.27%

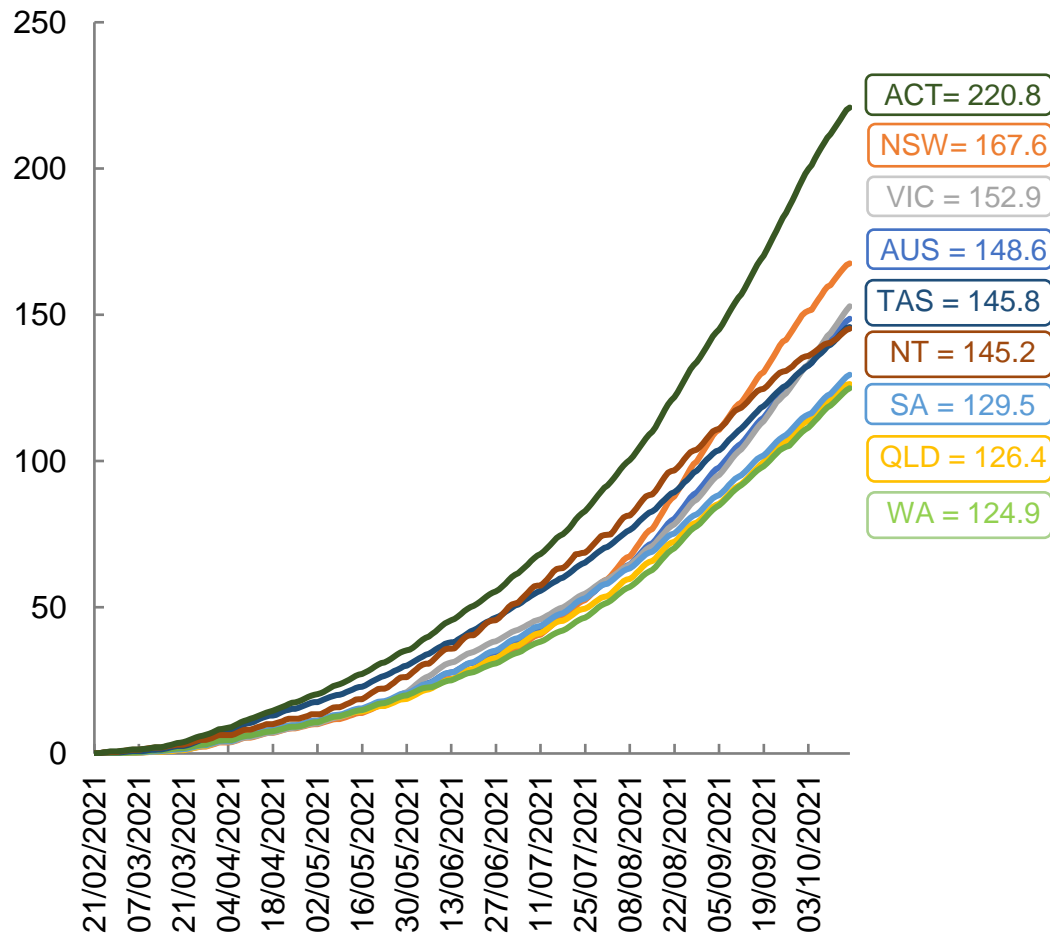
\*National population will not equal sum of listed jurisdictions due to a small number of people counted in national population residing in some 'other' territories. Sum of state doses will not add to national total as some records are unable to be geocoded to a State or Territory.

Doses sourced from Australian Immunisation Register, population from ABS ERP June 2020



# Vaccinations by location

Cumulative total doses administered vs state populations\*

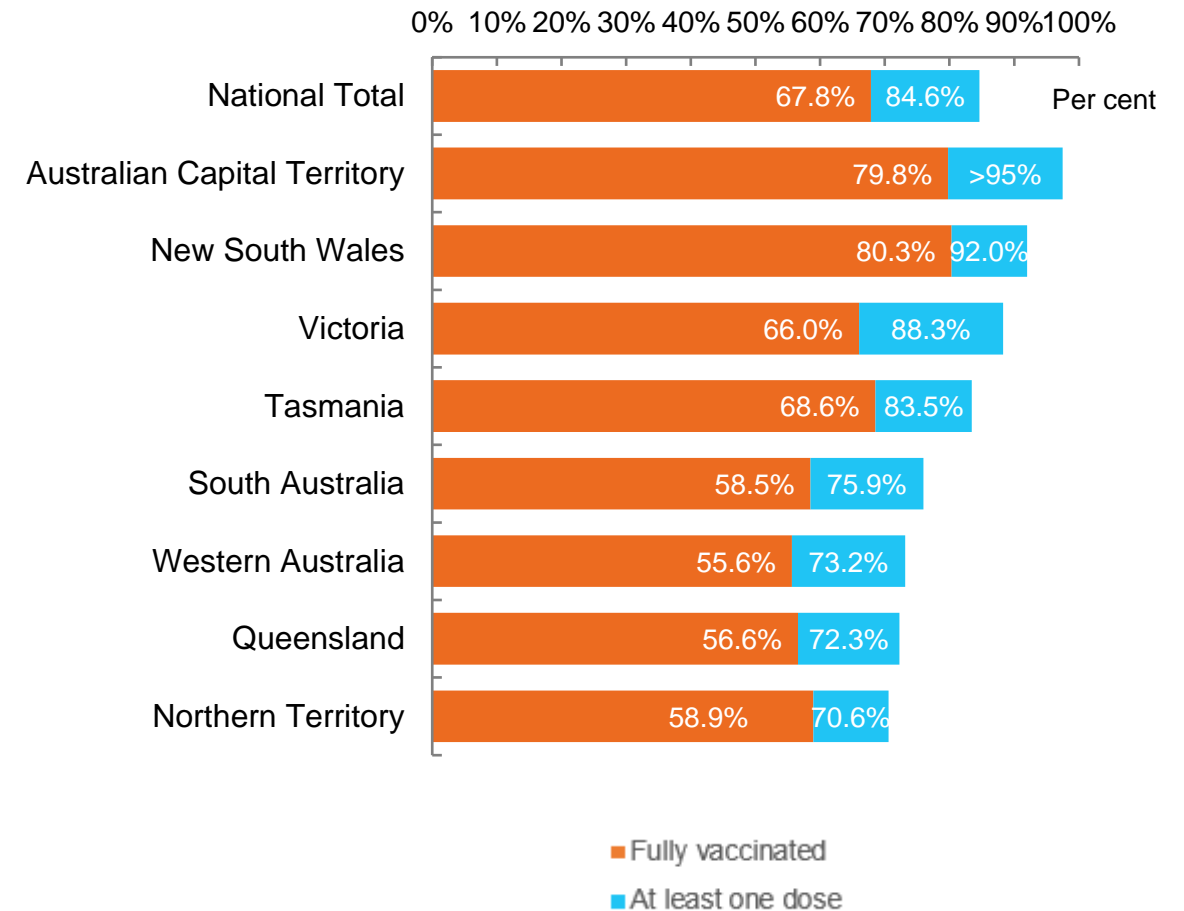


\*Not an indication of percentage vaccinated, numbers will exceed 100 due to multiple doses required per person of the population

Data as at:  
16 Oct 2021

Australia's COVID-19  
Vaccine Roadmap

First and Second Doses by state of residence





# Aboriginal and Torres Strait Islander peoples

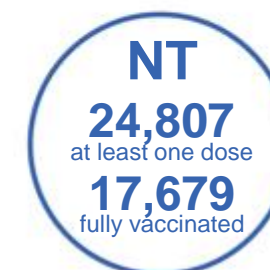
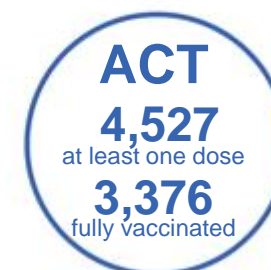
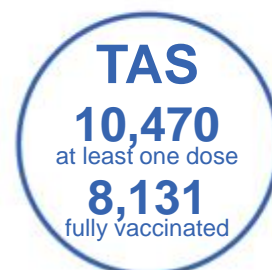
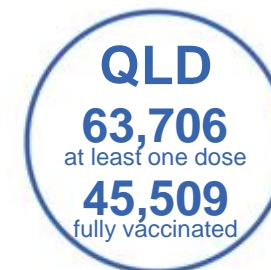
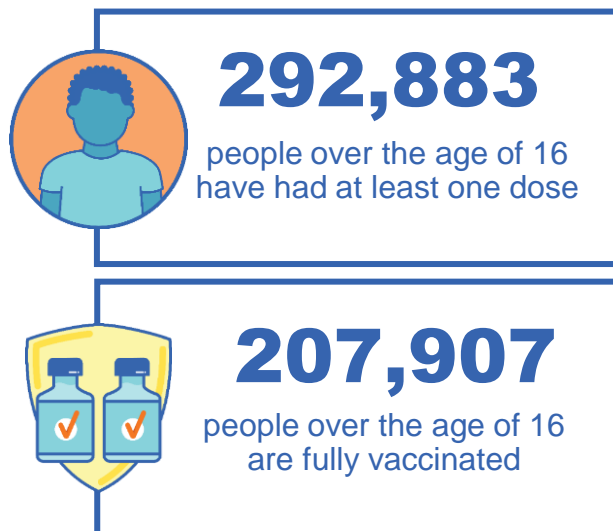
## Number of people vaccinated

Data as at:  
10 Oct 2021  
Updated weekly

Australia's COVID-19  
Vaccine Roadmap

### 167 Aboriginal community controlled health services (ACCHS)

0#	48	26	39	12	3	21	18
ACT	NSW	NT	QLD	SA	TAS	VIC	WA



**7,866** people with at least one dose  
**4,768** people fully vaccinated

residing in other territories or with missing residential information  
Source: Australian Immunisation Register

\*Identifying as Aboriginal and Torres Strait Islander is optional and the estimated population may be under reported.

\*\*Includes all Aboriginal and Torres Strait Islander peoples who have received a vaccination, not limited to those administered in an ACCHS setting

\*\*\*Updated weekly.

#ACCHS in the ACT are currently operating as a Commonwealth Vaccine Clinics so not included to avoid double counting



Data as at:  
16 Oct 2021

# Commonwealth primary care



## Primary care vaccine administration sites

<b>5,574</b>	<b>137</b>	<b>169</b>	<b>3,391</b>
GPs	CVCs	ACCHS	Pharmacies



**17,924,448** total vaccine doses administered primary care settings as at 16 October  
**+ 109,565** recorded in the last 24 hours

## Primary care vaccinations by provider type

	Doses administered	Daily increase	7 day increase
General Practice* includes other Commonwealth	16,655,485	96,614	1,023,678
Pharmacy	1,268,963	12,951	184,886



**101,739** doses administered to persons residing in other territories or with missing residential information

\*General practice includes Commonwealth Vaccination Clinics, Aboriginal Community Health Centres, Royal Flying Doctor Service and other Commonwealth vaccination facilities

Source: Australian Immunisation Register



Data as at:  
16 Oct 2021

# Commonwealth aged care and disability doses administered



**1,080,497** (+ 3,639 last 24 hours)

Total vaccine doses administered in aged care and disability facilities as at 16 October

Number of doses administered as part of the Commonwealth aged and disability care rollout

**NSW**  
**504,217**  
(+772 daily increase)

**VIC**  
**192,172**  
(+691 daily increase)

**QLD**  
**198,750**  
(+1,565 daily increase)

**WA**  
**66,921**  
(+311 daily increase)

**TAS**  
**16,887**  
(+10 daily increase)

**SA**  
**58,621**  
(+138 daily increase)

**ACT**  
**12,657**  
(+121 daily increase)

**NT**  
**5,777**  
(+9 daily increase)

\*Sourced from the Australian Immunisation Register. Includes all persons vaccinated at participating residential aged care, disability and related industry settings.

\*\*State level breakdown indicates the residential location and may not align to the state in which the vaccination occurred.

**24,495**

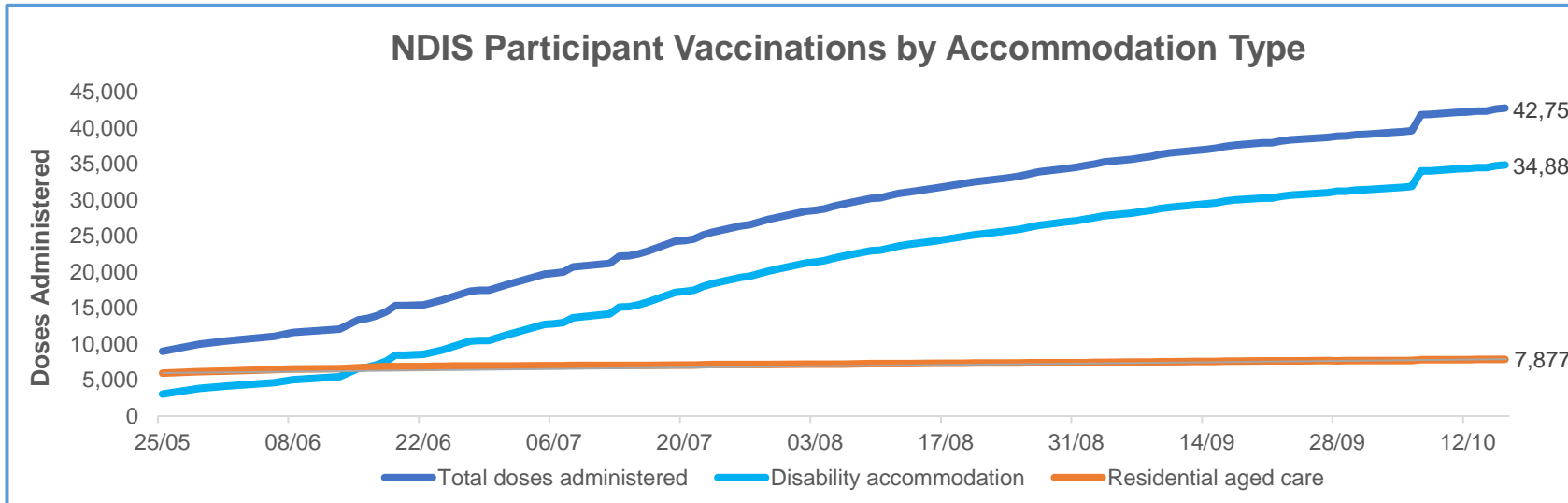
doses administered to persons residing in other territories or with missing residential information



Data as at:  
16 Oct 2021\*

# Vaccination rate of people with disability and the disability workforce

## Phase 1a – People with disability living in shared accommodation



	Total people with at least one dose	People fully vaccinated	Total number of individuals in cohort	Total doses administered	% People with at least one dose	% People fully vaccinated
NDIS participants living in shared accommodation **	22,334	20,423	27,293	42,757	81.8%	74.8%
NDIS screened workers ***	168,902	146,172	211,265	315,074	79.9%	69.2%



\* Updates are available Monday to Friday on participants, and bi-weekly for workers, numbers may be up to four days old.

\*\* Shared accommodation means two or more people with disability living in shared residential accommodation and NDIS participants living in Residential Aged Care accommodation as per the eligibility criteria of Phase 1a.

\*\*\* Total number of workers within the NDIS Commission Worker Screening database who have ever been successfully screened and linked to an NDIS registered provider or participant.

Source: Linkage between National Disability Insurance Agency data, NDIS Quality and Safeguards Commission data and the Australian Immunisation Register.

Following ongoing work by Services Australia to improve data matching between Medicare, the Australian Immunisation Register and National Disability Insurance Agency records, improvements to data reporting have been applied from 7 October 2021. These have resulted in a one off increase in reported numbers to include participants who were previously not accurately data matched.



## Residential aged care vaccination rollout

Residential aged care facilities status

**100%**  
Commonwealth facilities visited (2,573 planned sites)

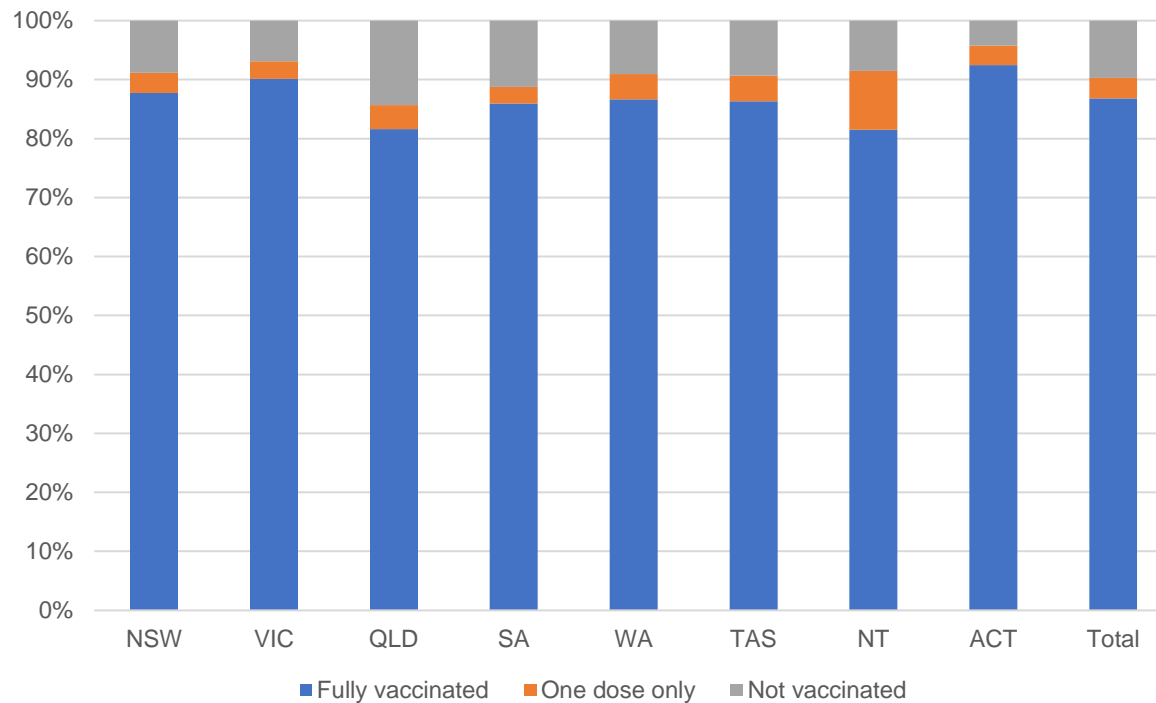
**161,736**  
People fully vaccinated

**90.3%**  
Participation rate

Australia's COVID-19 Vaccine Roadmap

Data as at:  
15 Oct 2021

### Aged care resident vaccinations



### Aged care worker vaccinations

Jurisdictions	Total workers with at least one dose	Workers fully vaccinated	% Workers with at least one dose	% Workers fully vaccinated
NSW	78,448	70,623	99.7%	89.8%
VIC	71,349	63,531	99.7%	88.8%
QLD	47,990	40,806	99.9%	84.9%
SA	27,198	24,058	100.0%	88.4%
WA	23,353	19,373	99.8%	82.8%
TAS	7,580	6,682	100.0%	88.1%
NT	809	780	99.3%	95.7%
ACT	2,942	2,713	100.0%	92.2%
<b>Total</b>	<b>259,669</b>	<b>228,566</b>	<b>99.8%</b>	<b>87.8%</b>

Source: My Aged Care Portal staff vaccination progress

\*\*Resident vaccination information is reported manually by service providers

\*Status updates are provided by facilities at least once per week. Reporting is updated Monday to Friday to encompass different facility updates being made on different days.

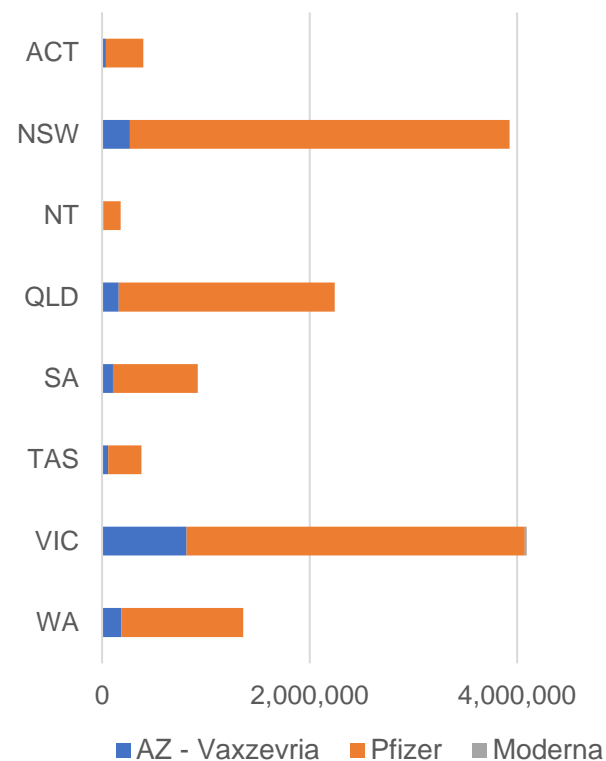
Data is sourced directly from Aged Care Service Providers and is not drawn or closely aligned with data from AIR due to inconsistencies and potential lags in uploading of records.



Data as at:  
16 Oct 2021

# Jurisdiction administered

Total vaccine doses administered in State and Territory clinics as at 16 October



**13,489,174** total vaccine doses administered  
in State and Territory clinics as at 16 October  
**+ 84,480** recorded in the last 24 hours  
**+ 716,258** recorded in the last 7 days

**NSW**  
**3,924,959**  
(+9,804 daily increase)

**VIC**  
**4,091,537**  
(+36,530 daily increase)

**QLD**  
**2,242,559**  
(+14,929 daily increase)

**WA**  
**1,358,524**  
(+8,966 daily increase)

**TAS**  
**377,066**  
(+2,759 daily increase)

**SA**  
**920,101**  
(+7,220 daily increase)

**ACT**  
**396,125**  
(+3,498 daily increase)

**NT**  
**178,303**  
(+774 daily increase)

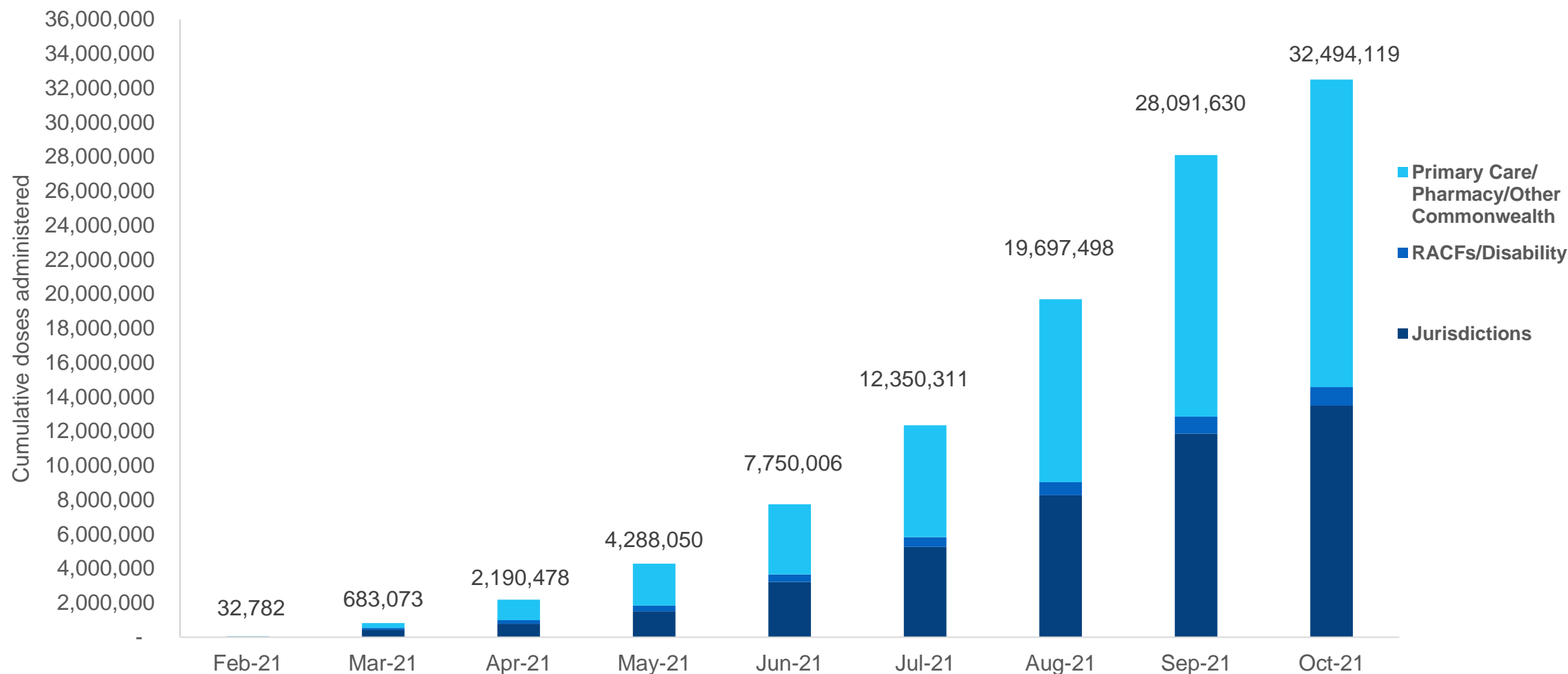
\*Sourced from the Australian Immunisation Register and self-reported data. Numbers are calculated as difference in daily cumulative reported numbers to allow for historical corrections in all self-reported data sources.



# Cumulative doses administered by channel

Data as at:  
16 Oct 2021

Australia's COVID-19  
Vaccine Roadmap



Source: Australian Immunisation Register

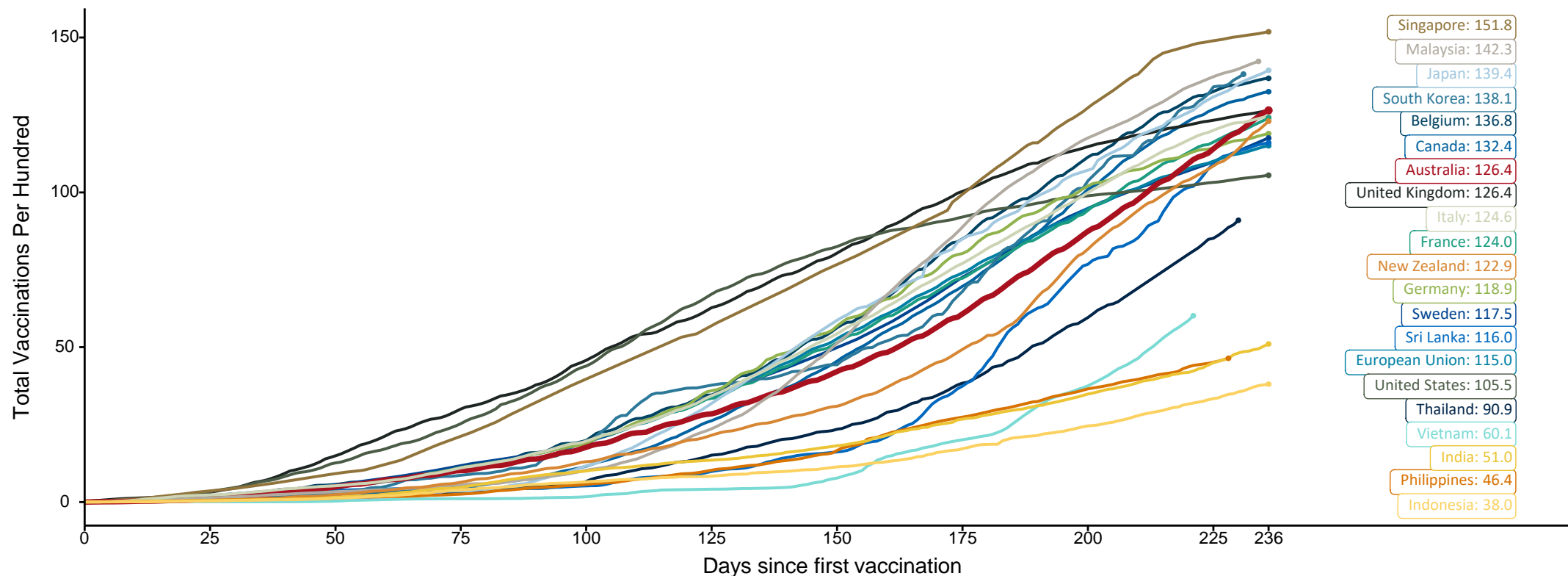


# Doses at equivalent stages of rollout (Day 236)

Data as at:  
16 Oct 2021

The x-axis is truncated at the length of Australia's vaccination program. Countries with intermittent reporting have had their doses per 100 imputed to Australia's current stage of rollout. Israel excluded as it is beyond scale of the graph

Cumulative doses administered (16 Oct): **32,494,119**



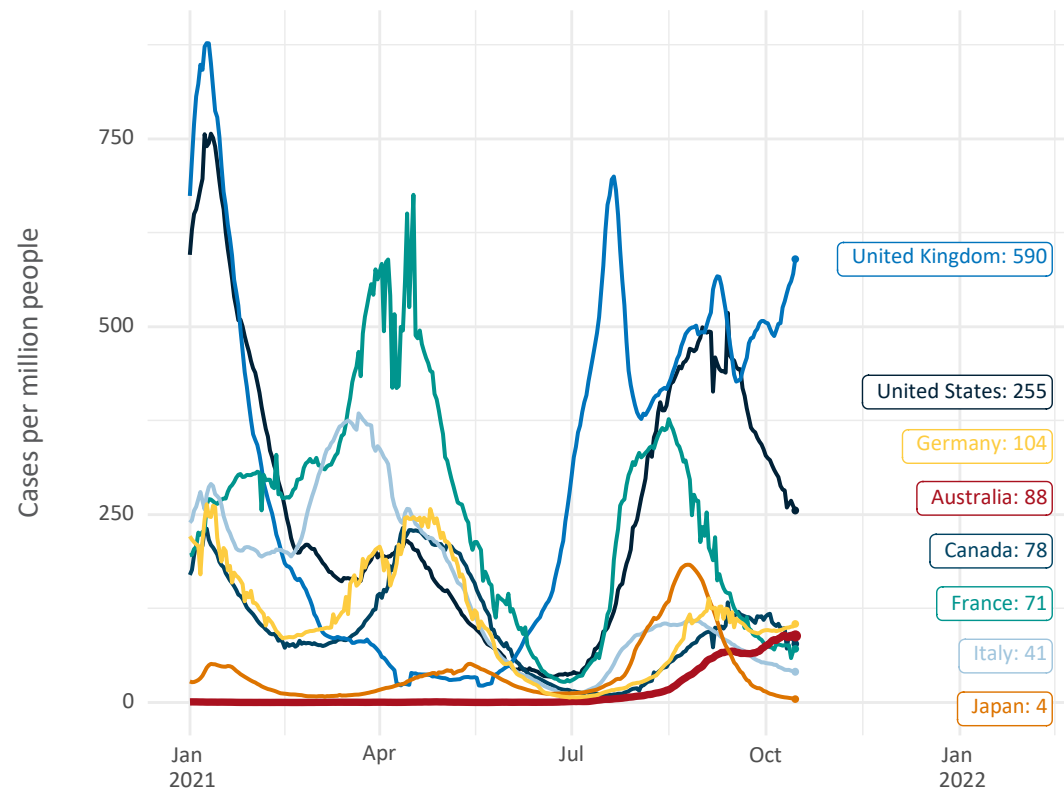
Note: From 15 September 2021, data for Australia includes all doses administered to people 12 and over. Prior to 15 September, data was for 16 and over  
Source: Department of Health (Australia), Our World in Data (international)  
Latest data: 16 October



Data as at:  
16 Oct 2021

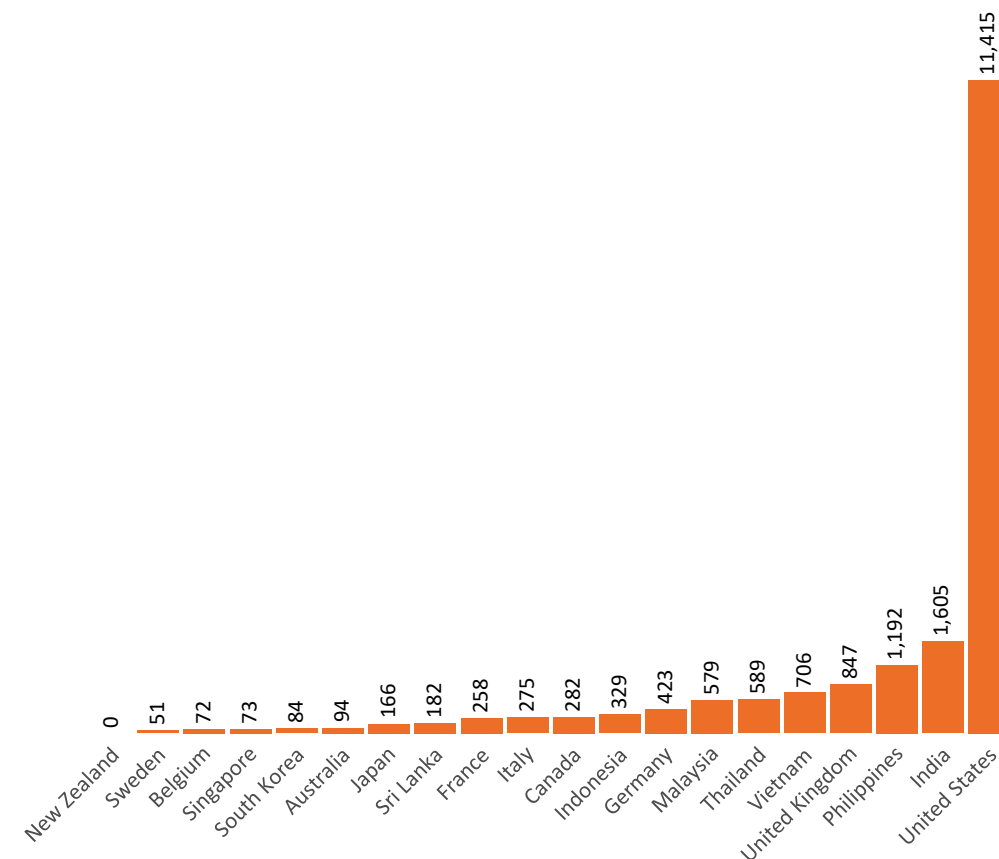
# International data – COVID-19

New daily cases per million in 2021, Australia and G7 countries  
Smoothed - 7 day average



Source: OWID  
Data downloaded: 17 Oct 2021 08:32  
Latest data: 15 Oct 2021

COVID-19 deaths in past 7 days - Australia and select countries



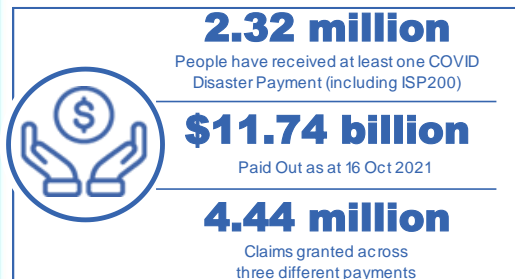
Source: OWID  
Data downloaded: 17 Oct 2021 08:32  
Latest data: 15 Oct 2021



# Pandemic Response Payments

Australia's COVID-19  
Vaccine Roadmap

Data as at midnight:  
16 Oct 2021



<b>COVID Disaster Payment:</b>	4.33 million claims received - 2.15 million individuals paid a total of \$11.36 billion.
<b>\$200 Income Support Payment:</b>	264,000 claims received - 176,000 individuals paid a total of \$244.92 million.
<b>Pandemic Leave Disaster Payment:</b>	96,000 claims received - 84,000 individuals paid a total of \$134.43 million.



**COVID Disaster Payment**  
assisting during a lockdown event in a Commonwealth hotspot.

**Income Support Payment \$200**  
for income support recipients who lost at least 8 hours of work.

**Pandemic Leave Disaster Payment**  
for those who have to self-isolate, quarantine or care.

For more information visit:  
[servicesaustralia.gov.au](https://servicesaustralia.gov.au)

## COVID-19 DISASTER PAYMENTS

### New South Wales

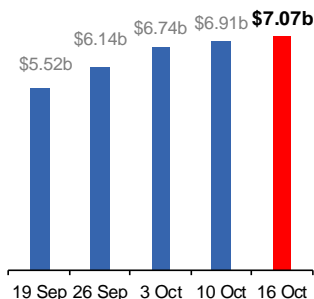
Active lockdown since 24 Jun  
Partial reopening from 10 Oct

**1.07m people have received at least one COVID Disaster Payment.**

**\$7.07b paid out as at 16 Oct 2021.**

**\$177m paid in initial and reoccurring payments in the week ending 10 Oct 2021.**

Cumulative payments made by State since activation on 1 Jul 2021.



### Victoria

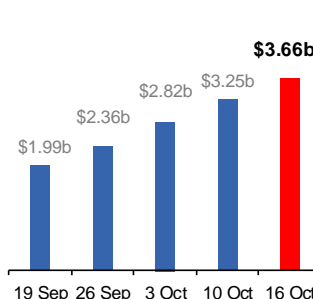
Active lockdown (#6) since 6 Aug

**717,000 people have received at least one COVID Disaster Payment.**

**\$3.66b paid out as at 16 Oct 2021.**

**\$428m paid in initial and reoccurring payments in the week ending 10 Oct 2021.**

Cumulative payments made by State since activation on 8 Jun 2021.



### Australian Capital Territory

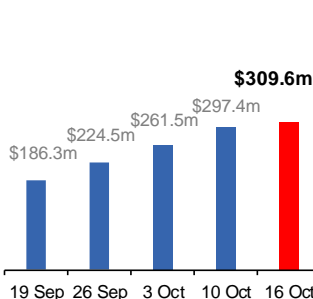
Active lockdown since 12 Aug

**65,000 people have received at least one COVID Disaster Payment.**

**\$309.6m paid out as at 16 Oct 2021.**

**\$35m paid in initial and reoccurring payments in the week ending 10 Oct 2021.**

Cumulative payments made by State since activation on 20 Aug 2021.



### Northern Territory

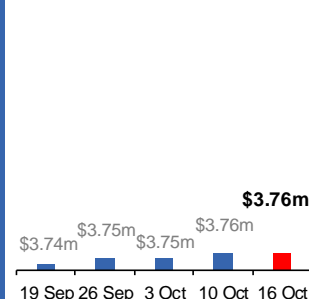
Lockdown from 18 – 20 Jul  
Claiming period ended 13 Sep

**5,798 people have received at least one COVID Disaster Payment.**

**\$3.76m paid out as at 16 Oct 2021.**

**\$4,000 paid in initial and reoccurring payments in the week ending 10 Oct 2021.**

Cumulative payments made by State since activation on 25 Aug 2021.



### Queensland

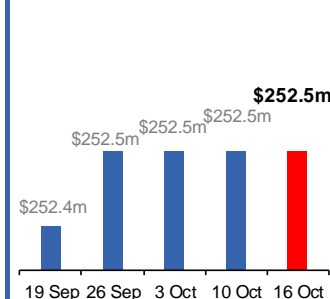
Lockdown from 31 Jul – 11 Aug  
Claiming period ended 28 Aug

**196,000 people have received at least one COVID Disaster Payment.**

**\$252.5m paid out as at 16 Oct 2021.**

**\$19,000 paid in initial and reoccurring payments in the week ending 10 Oct 2021.**

Cumulative payments made by State since activation on 7 Aug 2021.



### South Australia

Lockdown from 21 – 27 Jul  
Claiming period ended 17 Aug

**86,000 people have received at least one COVID Disaster Payment.**

**\$48.2m paid out as at 16 Oct 2021.**

**\$1,000 paid in initial and reoccurring payments in the week ending 10 Oct 2021.**

Cumulative payments made by State since activation on 28 Jul 2021.

