



Australian Government
Operation COVID Shield

COVID-19 Vaccine Roll-out

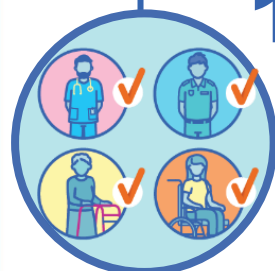
16 October 2021

Data as at:
15 Oct 2021

Total vaccine doses



32,296,435 total vaccine
doses administered nationally as at 15 October
+301,694 recorded in the last 24 hours



17,404,811

people have had at least one
dose

84.4%

of people over the age of 16
have had at least one dose



13,865,628

people are fully vaccinated

67.2%

of people over the age of 16 are
fully vaccinated

NSW
11,609,224
(+96,245 daily
increase)

VIC
8,660,380
(+99,193 daily
increase)

QLD
5,509,097
(+46,063 daily
increase)

WA
2,789,430
(+28,304 daily
increase)

TAS
675,411
(+5,051 daily
increase)

SA
1,961,285
(+17,536 daily
increase)

ACT
796,801
(+6,971 daily
increase)

NT
294,807
(+2,331 daily
increase)

*Administration state breakdown indicates state in which a vaccine was administered

**Overall dose count includes instances of more than two doses per person in a small number of cases.

Source: Australian Immunisation Register

Data as at:
15 Oct 2021

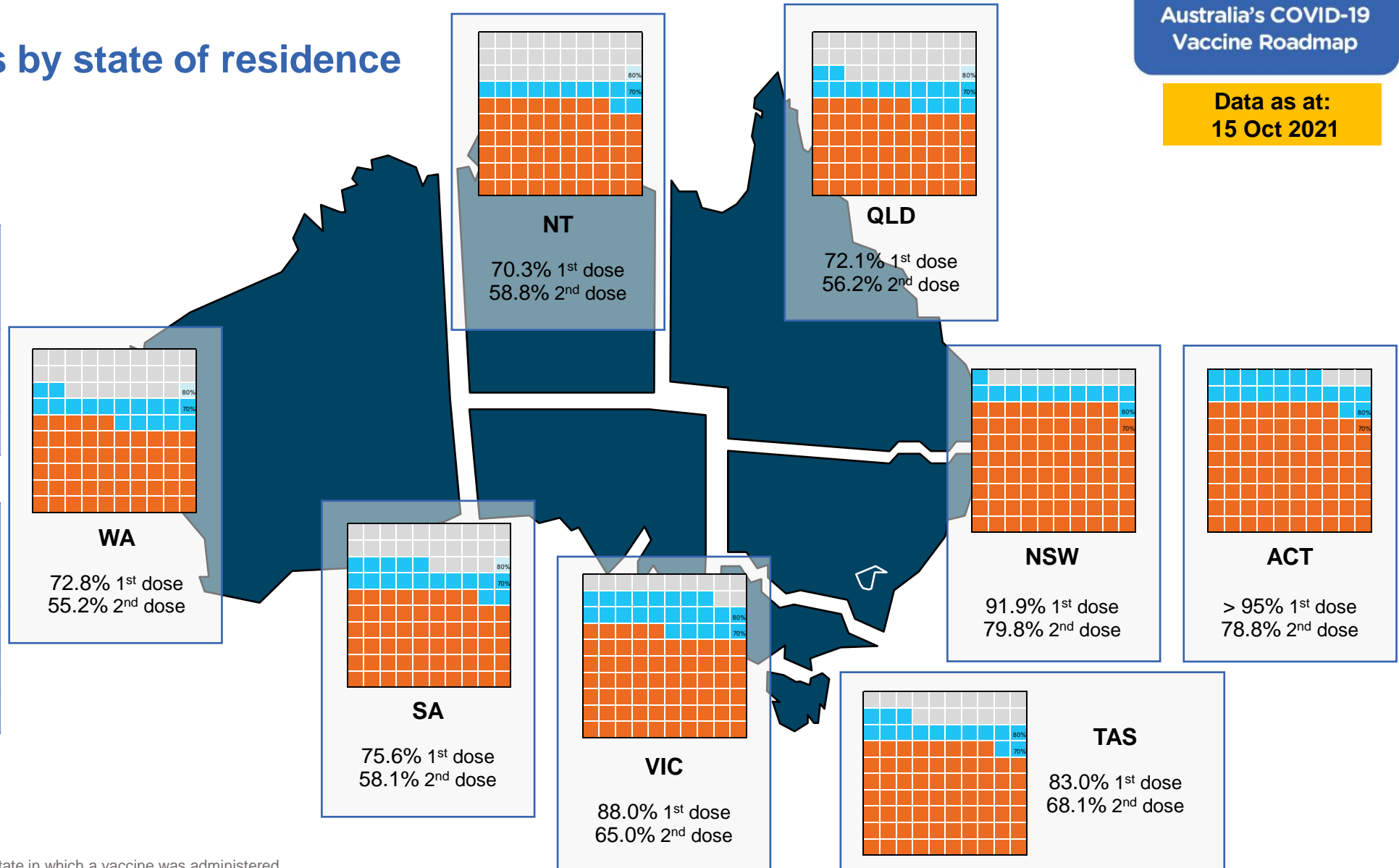
Vaccinations by state of residence

First doses

Age	Today	4 weeks ago	8 weeks ago
16+	84.4%	71.9%	52.8%
50+	92.9%	86.4%	75.9%
70+	>95%	93.1%	86.6%

Fully vaccinated

Age	Today	4 weeks ago	8 weeks ago
16+	67.2%	46.8%	30.4%
50+	79.5%	66.1%	44.7%
70+	84.9%	74.8%	58.3%



*Residential state may differ from the state in which a vaccine was administered

Commonwealth and Jurisdiction vaccine doses administered

Data as at:
15 Oct 2021



32,296,435 total vaccine
doses administered nationally as at 15 October
+ 301,694 recorded in the last 24 hours



13,404,694
doses administered by state
and territory facilities
+ 104,164
recorded in the last 24 hours

NSW	Jurisdictions	Commonwealth
Cumulative	3,915,155	7,694,069
Daily increase	20,051	76,194

TAS	Jurisdictions	Commonwealth
Cumulative	374,307	301,104
Daily increase	2,878	2,173

VIC	Jurisdictions	Commonwealth
Cumulative	4,055,007	4,605,373
Daily increase	38,845	60,348

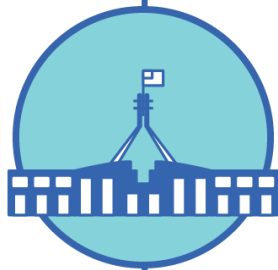
SA	Jurisdictions	Commonwealth
Cumulative	912,881	1,048,404
Daily increase	8,357	9,179

QLD	Jurisdictions	Commonwealth
Cumulative	2,227,630	3,281,467
Daily increase	15,047	31,016

ACT	Jurisdictions	Commonwealth
Cumulative	392,627	404,174
Daily increase	3,566	3,405

WA	Jurisdictions	Commonwealth
Cumulative	1,349,558	1,439,872
Daily increase	14,064	14,240

NT	Jurisdictions	Commonwealth
Cumulative	177,529	117,278
Daily increase	1,356	975

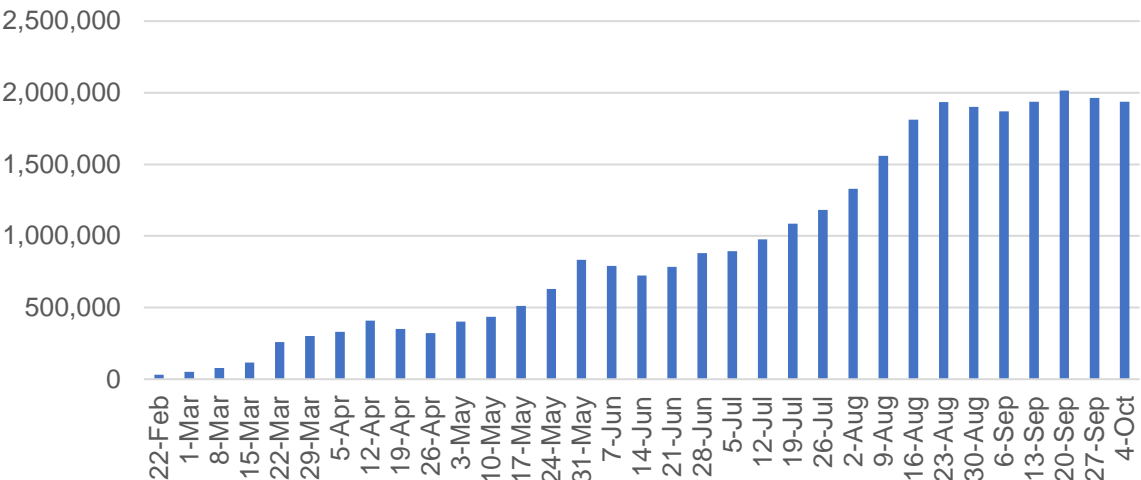


18,891,741
doses administered by
commonwealth facilities
+ 197,530
recorded in the last 24 hours

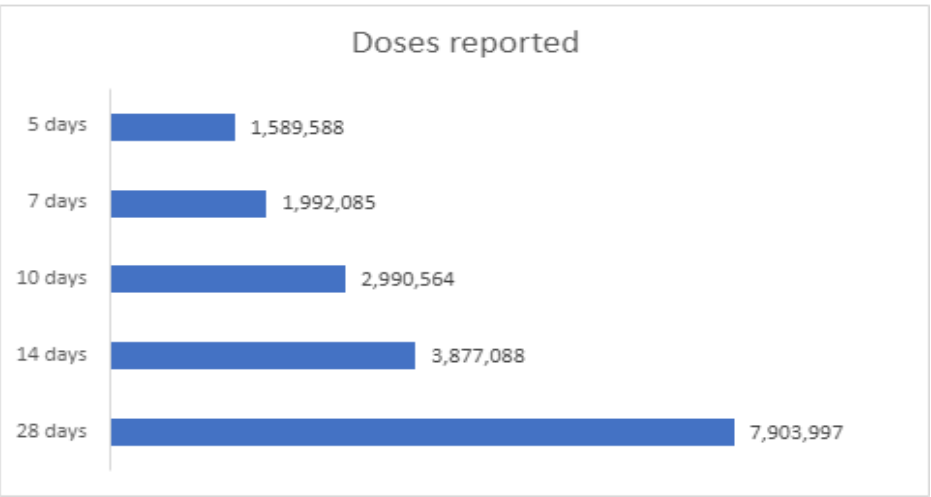
17,814,883 total vaccine doses
administered in primary care settings
1,076,858 total vaccine doses
administered in aged care and disability
settings

Vaccine milestone charts

Jabs in arms by week



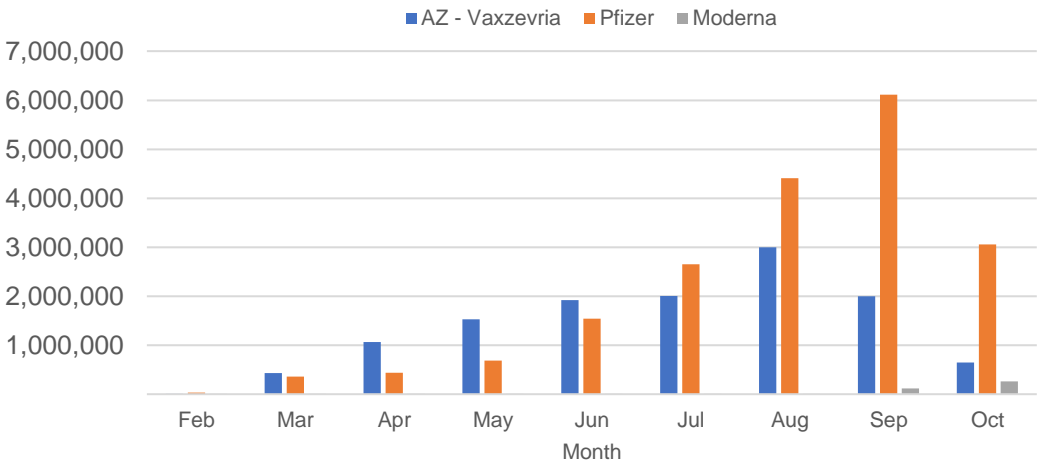
Doses reported



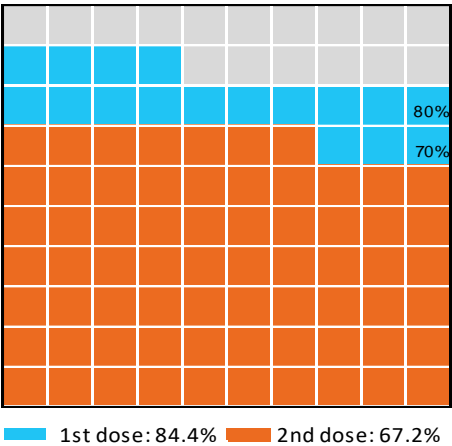
Data as at:
15 Oct 2021

Australia's COVID-19
Vaccine Roadmap

Doses by administration month and vaccine type



Eligible population percentage coverage



*Each square represents 1% of the national population.
Squares are filled as milestones are achieved.

*Sourced from the Australian Immunisation Register.

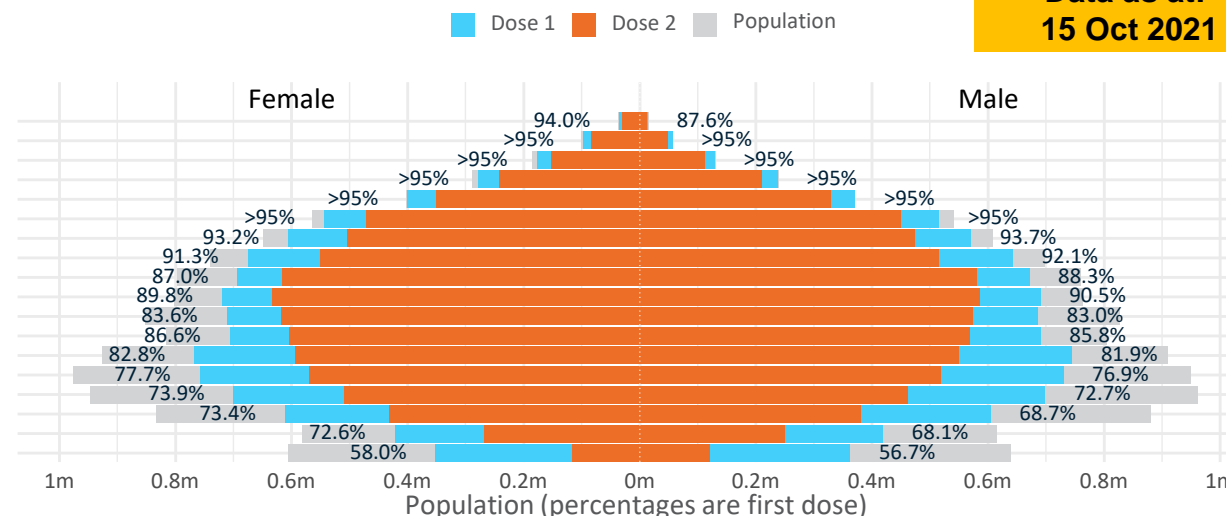
Doses by age and sex

First and second doses by age and sex

Australia's COVID-19
Vaccine Roadmap

Data as at:
15 Oct 2021

Age	Dose 1	Dose 2
95+	48,822 (92.3%)	41,643 (78.7%)
90-94	153,580 (>95%)	132,720 (83.8%)
85-89	306,535 (>95%)	265,368 (83.9%)
80-84	516,105 (>95%)	451,904 (85.5%)
75-79	771,269 (>95%)	678,856 (87.7%)
70-74	1,060,418 (>95%)	920,805 (83.3%)
65-69	1,177,148 (93.6%)	978,753 (77.8%)
60-64	1,318,920 (91.8%)	1,066,601 (74.2%)
55-59	1,364,773 (87.7%)	1,196,040 (76.9%)
50-54	1,411,060 (90.2%)	1,219,158 (77.9%)
45-49	1,398,192 (83.4%)	1,192,267 (71.1%)
40-44	1,398,765 (86.3%)	1,174,090 (72.5%)
35-39	1,515,657 (82.6%)	1,144,829 (62.4%)
30-34	1,494,278 (77.7%)	1,091,885 (56.8%)
25-29	1,407,110 (73.8%)	976,242 (51.2%)
20-24	1,220,927 (71.3%)	816,088 (47.7%)
16-19	841,252 (70.4%)	518,379 (43.4%)
12-15	713,690 (57.4%)	235,933 (19.0%)



	AUS	ACT	NSW	NT	QLD	SA	TAS	VIC	WA
16 and over - dose 1	17,404,811	334,932	6,034,376	134,021	2,963,866	1,089,192	365,123	4,761,320	1,540,356
16 and over - dose 2	13,865,628	271,016	5,240,213	111,974	2,309,701	837,415	299,811	3,515,961	1,167,421
16 and over - population	20,619,959*	344,037	6,565,651	190,571	4,112,707	1,440,400	440,172	5,407,574	2,114,978
16 and over % with dose 1	84.41%	>95%	91.91%	70.33%	72.07%	75.62%	82.95%	88.05%	72.83%
16 and over % with dose 2	67.24%	78.78%	79.81%	58.76%	56.16%	58.14%	68.11%	65.02%	55.20%
50 and over - dose 1	8,128,630	131,390	2,714,752	49,824	1,528,323	593,805	200,767	2,086,835	773,272
50 and over - dose 2	6,951,848	118,689	2,443,530	43,231	1,274,080	482,821	172,641	1,753,461	627,581
50 and over - population	8,749,703	127,802	2,807,793	62,280	1,758,855	674,384	220,036	2,211,211	885,370
50 and over % with dose 1	92.90%	>95%	>95%	80.00%	86.89%	88.05%	91.24%	94.38%	87.34%
50 and over % with dose 2	79.45%	92.87%	87.03%	69.41%	72.44%	71.59%	78.46%	79.30%	70.88%
70 and over - dose 1	2,856,729	42,711	956,670	10,619	542,501	227,367	74,688	718,656	263,452
70 and over - dose 2	2,491,296	38,941	867,733	9,227	469,156	188,357	64,758	618,390	218,989
70 and over - population	2,934,706	39,946	962,606	12,343	577,767	240,514	77,155	743,519	280,281
70 and over % with dose 1	>95%	>95%	>95%	86.03%	93.90%	94.53%	>95%	>95%	94.00%
70 and over % with dose 2	84.89%	>95%	90.14%	74.75%	81.20%	78.31%	83.93%	83.17%	78.13%
12 to 15 - dose 1	713,690	18,285	288,854	5,256	101,245	27,002	9,271	218,169	41,310
12 to 15 - dose 2	235,933	4,479	124,698	2,850	32,991	5,962	2,146	54,354	7,311
12 to 15 - population	1,243,990	19,693	390,330	13,060	270,146	82,747	26,308	308,611	132,869
12 to 15 % with dose 1	57.37%	92.85%	74.00%	40.25%	37.48%	32.63%	35.24%	70.69%	31.09%
12 to 15 % with dose 2	18.97%	22.74%	31.95%	21.82%	12.21%	7.21%	8.16%	17.61%	5.50%

*National population will not equal sum of listed jurisdictions due to a small number of people counted in national population residing in some 'other' territories. Sum of state doses will not add to national total as some records are unable to be geocoded to a State or Territory.

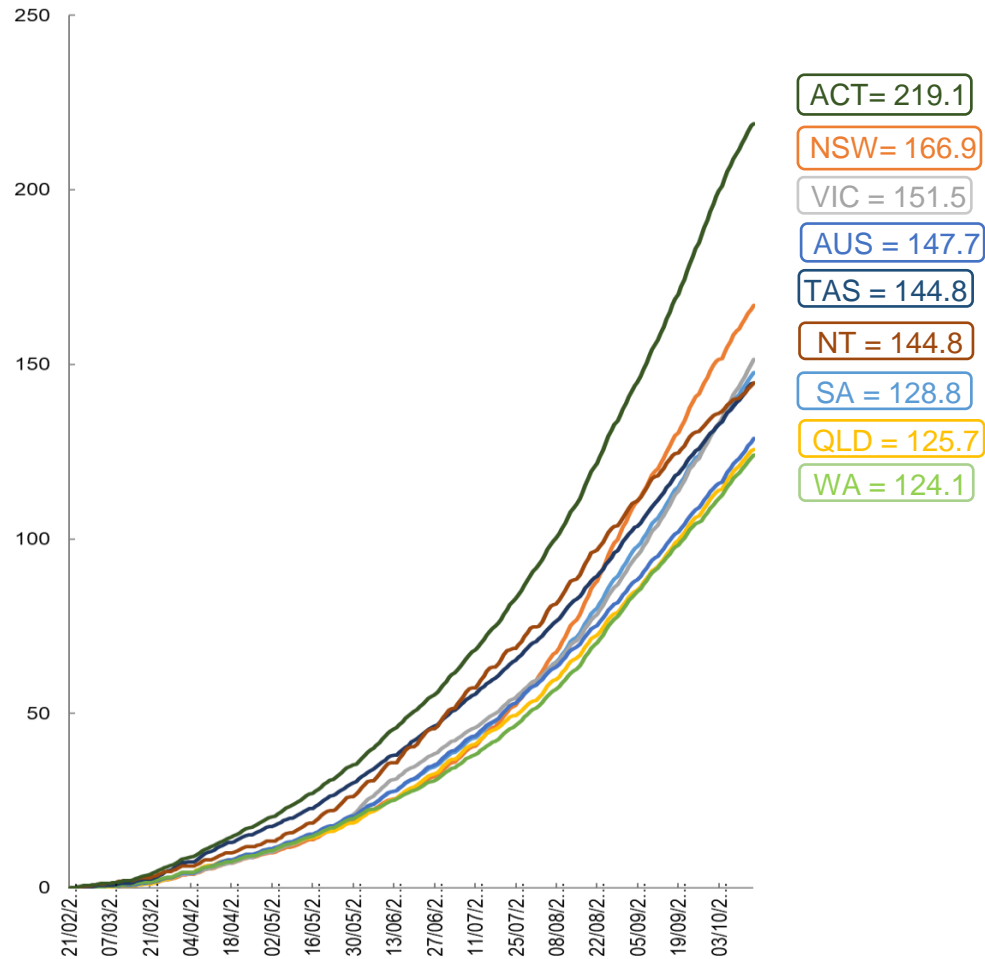
Doses sourced from Australian Immunisation Register, population from ABS ERP June 2020

Vaccinations by location

Data as at:
15 Oct 2021

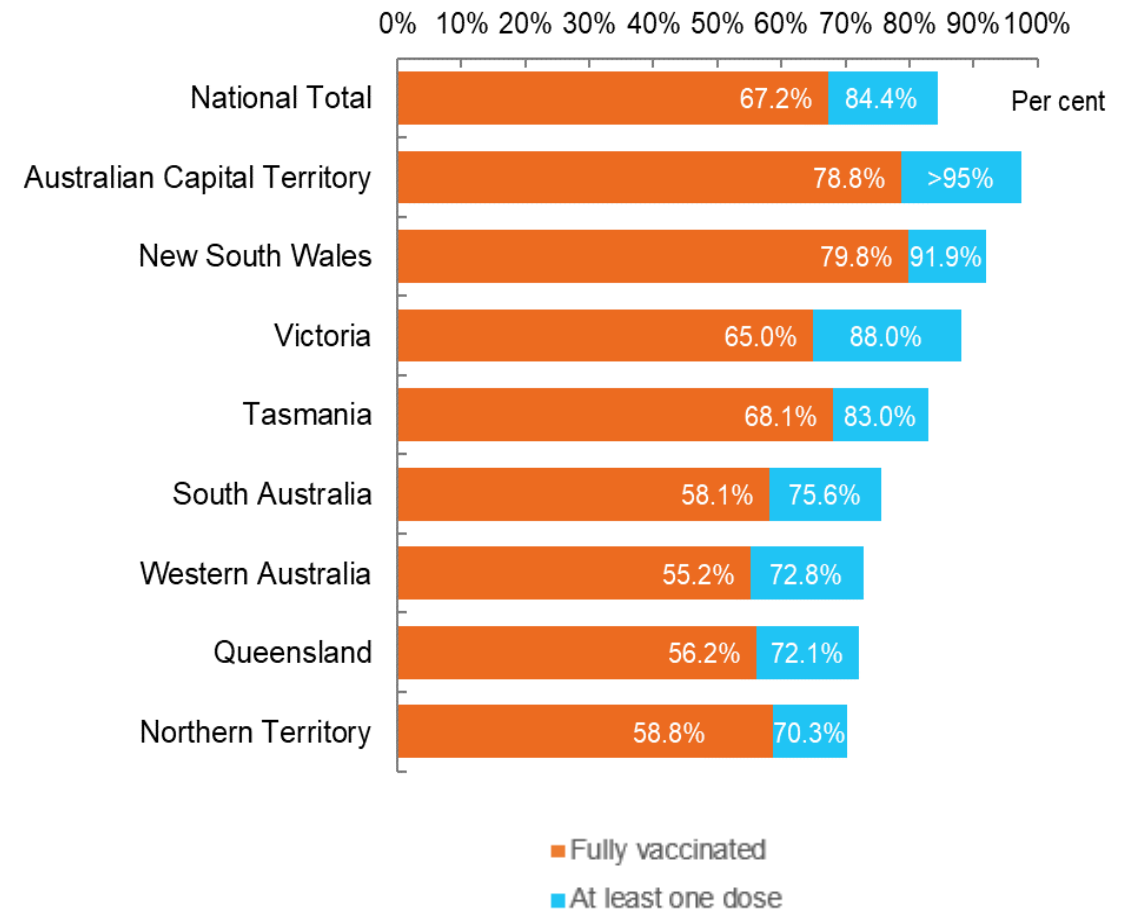
Australia's COVID-19
Vaccine Roadmap

Cumulative total doses administered vs state populations*



*Not an indication of percentage vaccinated, numbers will exceed 100 due to multiple doses required per person of the population

First and Second Doses by state of residence



Aboriginal and Torres Strait Islander peoples

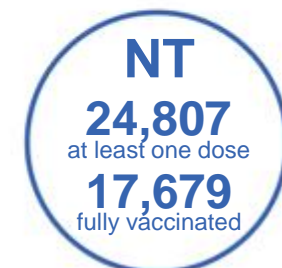
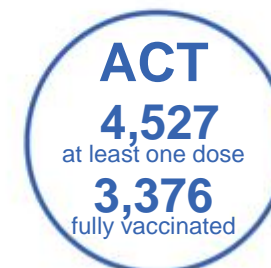
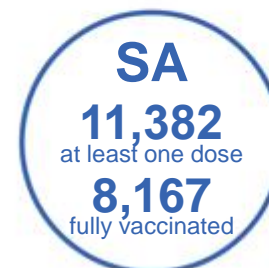
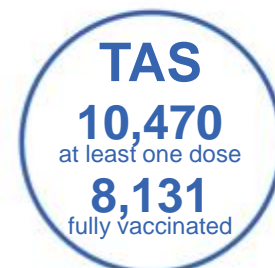
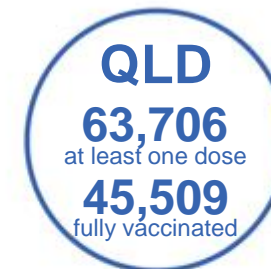
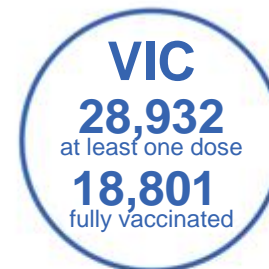
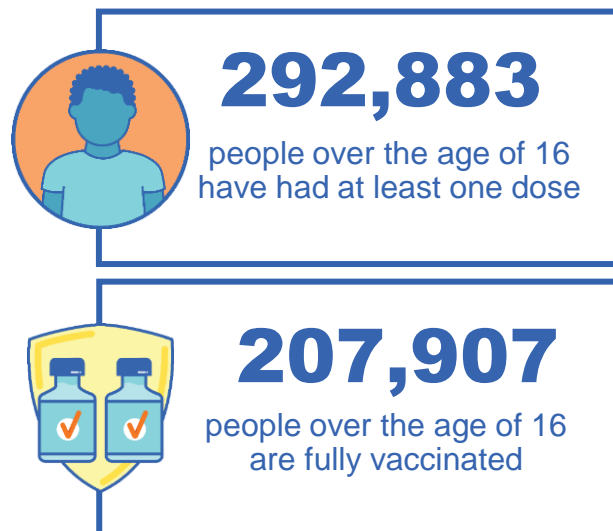
Number of people vaccinated

Data as at:
10 Oct 2021
Updated weekly

Australia's COVID-19
Vaccine Roadmap

167 Aboriginal community controlled health services (ACCHS)

0#	48	26	39	12	3	21	18
ACT	NSW	NT	QLD	SA	TAS	VIC	WA



7,866 people with at least one dose
4,768 people fully vaccinated

residing in other territories or with missing residential information
Source: Australian Immunisation Register

*Identifying as Aboriginal and Torres Strait Islander is optional and the estimated population may be under reported.

**Includes all Aboriginal and Torres Strait Islander peoples who have received a vaccination, not limited to those administered in an ACCHS setting

***Updated weekly.

#ACCHS in the ACT are currently operating as a Commonwealth Vaccine Clinics so not included to avoid double counting

Data as at:
15 Oct 2021

Commonwealth primary care



Primary care vaccine administration sites

5,574	137	169	3,391
GPs	CVCs	ACCHS	Pharmacies



17,814,883 total vaccine doses administered primary care settings as at 15 October
+ 194,365 recorded in the last 24 hours

Primary care vaccinations by provider type

	Doses administered	Daily increase	7 day increase
General Practice* includes other Commonwealth	16,558,871	160,979	1,039,159
Pharmacy	1,256,012	33,386	189,163



101,344 doses administered to persons residing in other territories or with missing residential information

*General practice includes Commonwealth Vaccination Clinics, Aboriginal Community Health Centres, Royal Flying Doctor Service and other Commonwealth vaccination facilities

Source: Australian Immunisation Register

Data as at:
15 Oct 2021

Commonwealth aged care and disability doses administered



1,076,858 (+ 3,165 last 24 hours)

Total vaccine doses administered in aged care and disability facilities as at 15 October

Number of doses administered as part of the Commonwealth aged and disability care rollout

NSW
503,445
(+1,377 daily increase)

VIC
191,481
(+453 daily increase)

QLD
197,185
(+1,136 daily increase)

WA
66,610
(+31 daily increase)

TAS
16,877
(+9 daily increase)

SA
58,483
(+70 daily increase)

ACT
12,536
(+67 daily increase)

NT
5,768
(+5 daily increase)

*Sourced from the Australian Immunisation Register. Includes all persons vaccinated at participating residential aged care, disability and related industry settings.

**State level breakdown indicates the residential location and may not align to the state in which the vaccination occurred.

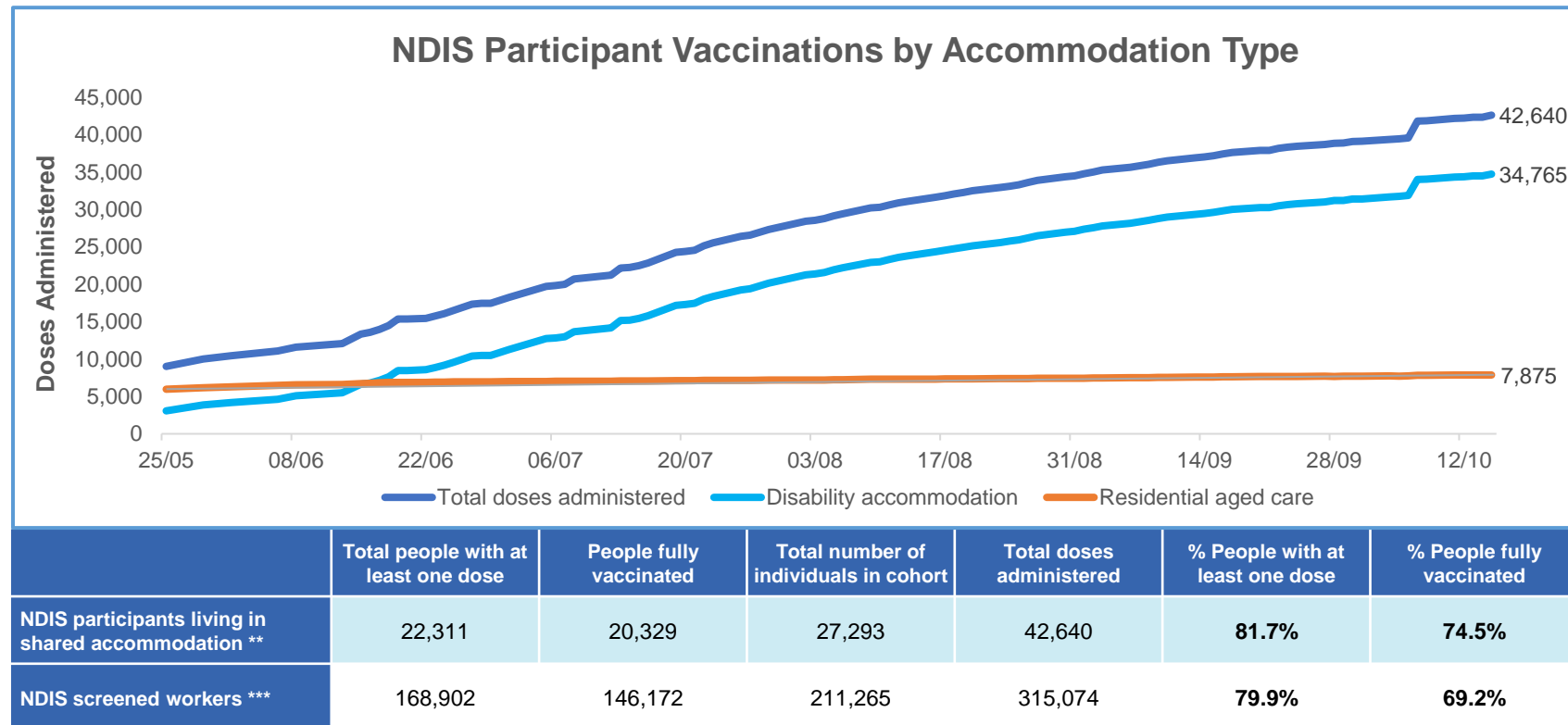
24,473

doses administered to persons residing in other territories or with missing residential information

Data as at:
15 Oct 2021*

Vaccination rate of people with disability and the disability workforce

Phase 1a – People with disability living in shared accommodation



* Updates are available Monday to Friday on participants, and bi-weekly for workers, numbers may be up to four days old.

** Shared accommodation means two or more people with disability living in shared residential accommodation and NDIS participants living in Residential Aged Care accommodation as per the eligibility criteria of Phase 1a.

*** Total number of workers within the NDIS Commission Worker Screening database who have ever been successfully screened and linked to an NDIS registered provider or participant.

Source: Linkage between National Disability Insurance Agency data, NDIS Quality and Safeguards Commission data and the Australian Immunisation Register.

Following ongoing work by Services Australia to improve data matching between Medicare, the Australian Immunisation Register and National Disability Insurance Agency records, improvements to data reporting have been applied from 7 October 2021. These have resulted in a one off increase in reported numbers to include participants who were previously not accurately data matched.

Residential aged care vaccination rollout

100%
Commonwealth facilities visited (2,573 planned sites)

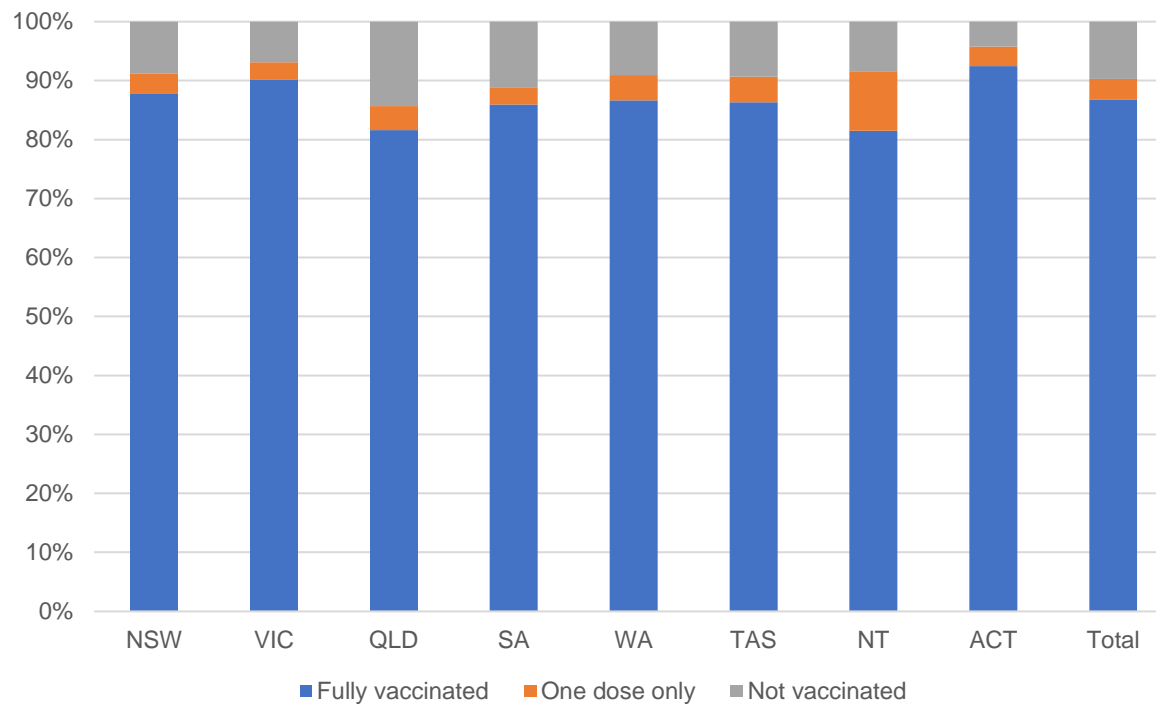
161,736
People fully vaccinated

90.3%
Participation rate

Australia's COVID-19 Vaccine Roadmap

Data as at:
15 Oct 2021

Aged care resident vaccinations



Aged care worker vaccinations

Jurisdictions	Total workers with at least one dose	Workers fully vaccinated	% Workers with at least one dose	% Workers fully vaccinated
NSW	78,448	70,623	99.7%	89.8%
VIC	71,349	63,531	99.7%	88.8%
QLD	47,990	40,806	99.9%	84.9%
SA	27,198	24,058	100.0%	88.4%
WA	23,353	19,373	99.8%	82.8%
TAS	7,580	6,682	100.0%	88.1%
NT	809	780	99.3%	95.7%
ACT	2,942	2,713	100.0%	92.2%
Total	259,669	228,566	99.8%	87.8%

Source: My Aged Care Portal staff vaccination progress

**Resident vaccination information is reported manually by service providers

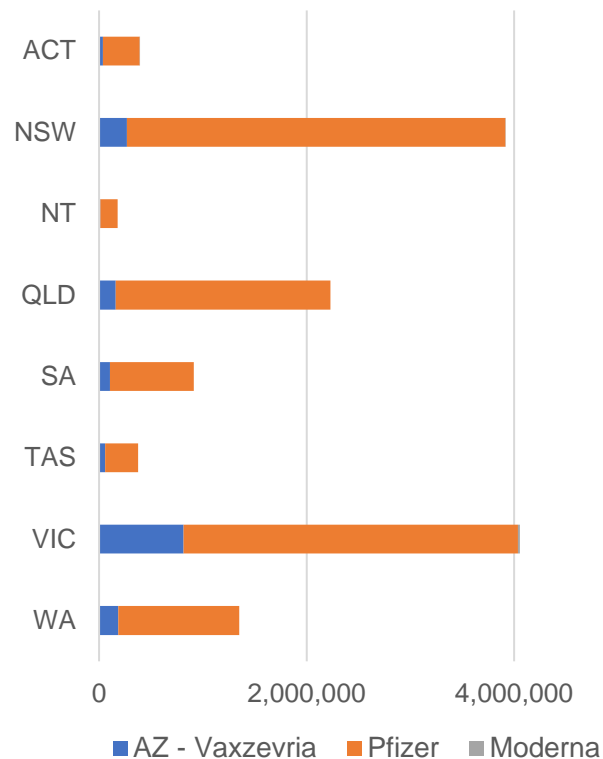
*Status updates are provided by facilities at least once per week. Reporting is updated Monday to Friday to encompass different facility updates being made on different days.

Data is sourced directly from Aged Care Service Providers and is not drawn or closely aligned with data from AIR due to inconsistencies and potential lags in uploading of records.

Data as at:
15 Oct 2021

Jurisdiction administered

Total vaccine doses administered in State and Territory clinics as at 15 October



13,404,694 total vaccine doses administered
in State and Territory clinics as at 15 October
+ **104,164** recorded in the last 24 hours
+ **733,104** recorded in the last 7 days

NSW
3,915,155
(+20,051 daily increase)

VIC
4,055,007
(+38,845 daily increase)

QLD
2,227,630
(+15,047 daily increase)

WA
1,349,558
(+14,064 daily increase)

TAS
374,307
(+2,878 daily increase)

SA
912,881
(+8,357 daily increase)

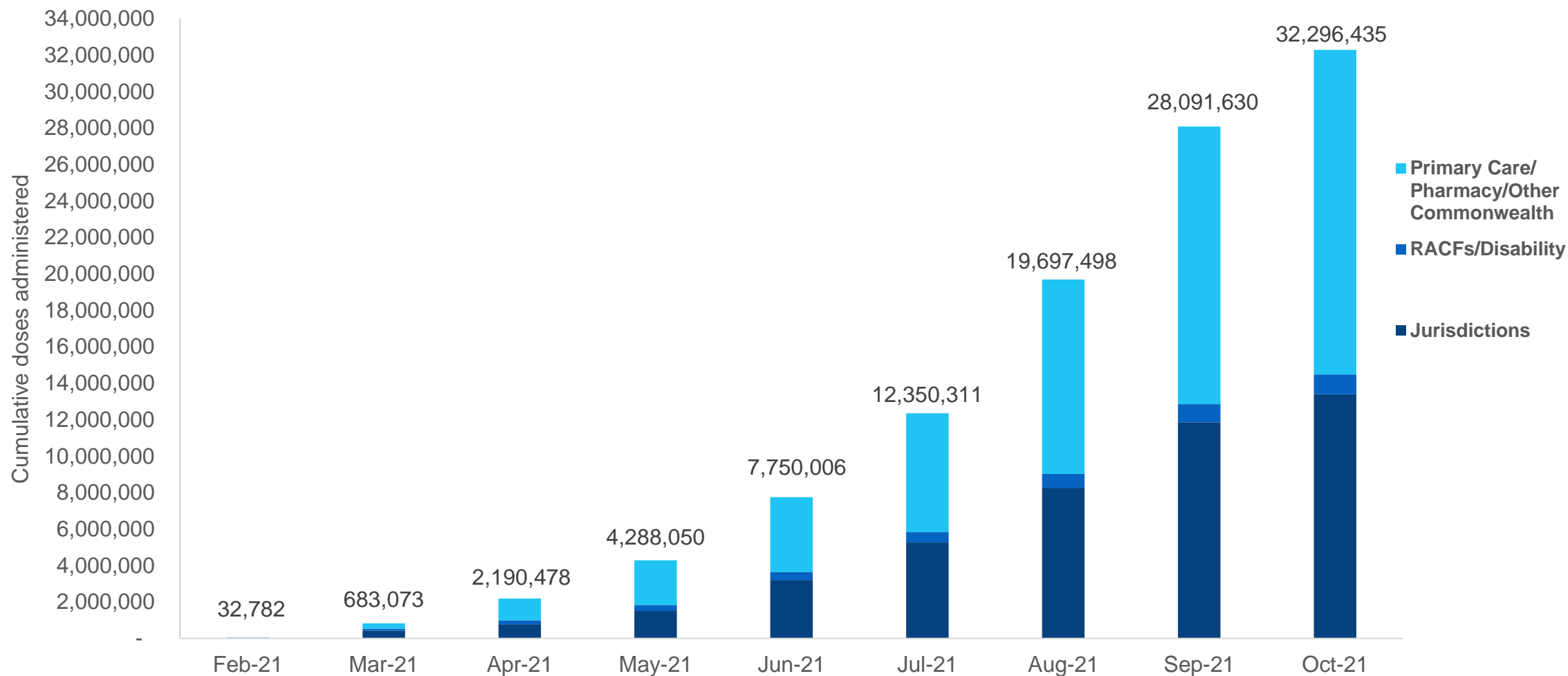
ACT
392,627
(+3,566 daily increase)

NT
177,529
(+1,356 daily increase)

*Sourced from the Australian Immunisation Register and self-reported data. Numbers are calculated as difference in daily cumulative reported numbers to allow for historical corrections in all self-reported data sources.

Cumulative doses administered by channel

Data as at:
15 Oct 2021



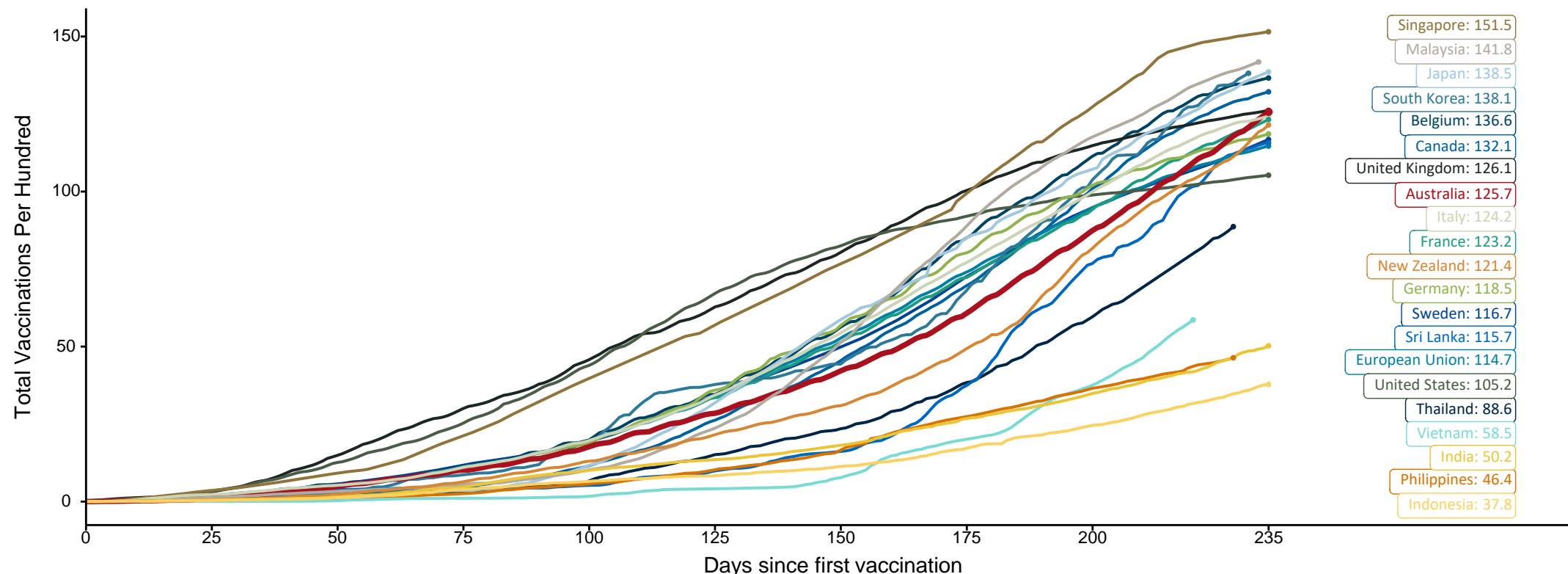
Source: Australian Immunisation Register

Doses at equivalent stages of rollout (Day 235)

Data as at:
15 Oct 2021

The x-axis is truncated at the length of Australia's vaccination program. Countries with intermittent reporting have had their doses per 100 imputed to Australia's current stage of rollout. Israel excluded as it is beyond scale of the graph

Cumulative doses administered (15 Oct): **32,296,435**

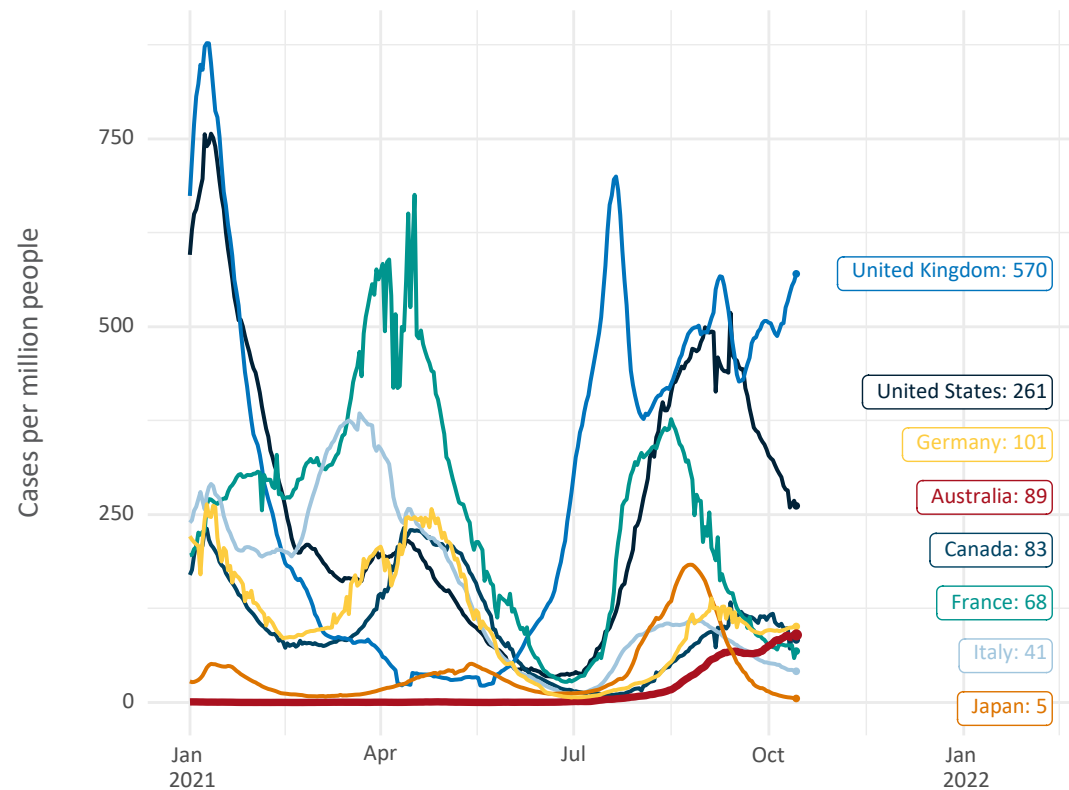


Note: From 15 September 2021, data for Australia includes all doses administered to people 12 and over. Prior to 15 September, data was for 16 and over
Source: Department of Health (Australia), Our World in Data (international)
Latest data: 15 October

International data – COVID-19

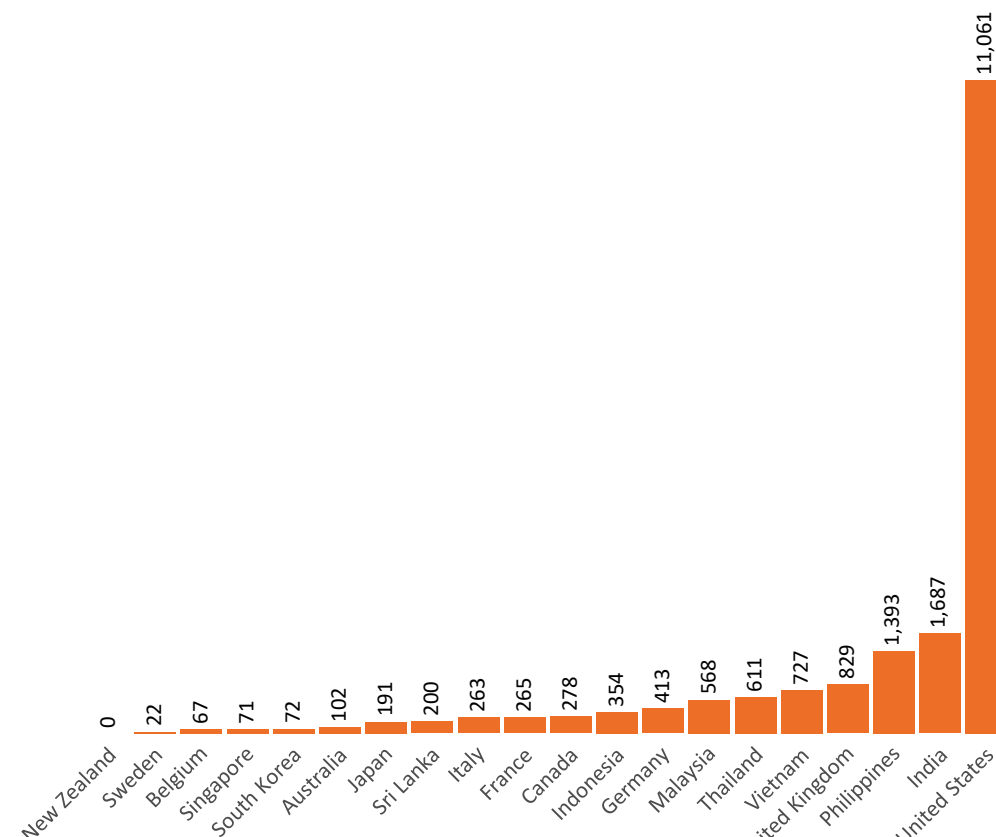
Data as at:
15 Oct 2021

New daily cases per million in 2021, Australia and G7 countries
Smoothed - 7 day average



Source: OWID
Data downloaded: 16 Oct 2021 08:49
Latest data: 14 Oct 2021

COVID-19 deaths in past 7 days - Australia and select countries



Source: OWID
Data downloaded: 16 Oct 2021 08:49
Latest data: 14 Oct 2021

Pandemic Response Payments

Australia's COVID-19
Vaccine Roadmap

Data as at midnight:
15 Oct 2021



COVID Disaster Payment:	4.31 million claims received - 2.14 million individuals paid a total of \$11.34 billion.
\$200 Income Support Payment:	263,000 claims received - 175,000 individuals paid a total of \$244.58 million.
Pandemic Leave Disaster Payment:	96,000 claims received - 84,000 individuals paid a total of \$134.36 million.



COVID Disaster Payment

assisting during a lockdown event in a Commonwealth hotspot.

Income Support Payment \$200

for income support recipients who lost at least 8 hours of work.

Pandemic Leave Disaster Payment

for those who have to self-isolate, quarantine or care.

For more information visit:
servicesaustralia.gov.au

COVID-19 DISASTER PAYMENTS

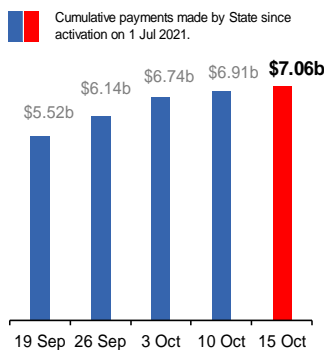
New South Wales

Active lockdown since 24 Jun
Partial reopening from 10 Oct

1.07m people have received at least one COVID Disaster Payment.

\$7.06b paid out as at 15 Oct 2021.

\$177m paid in initial and reoccurring payments in the week ending 10 Oct 2021.



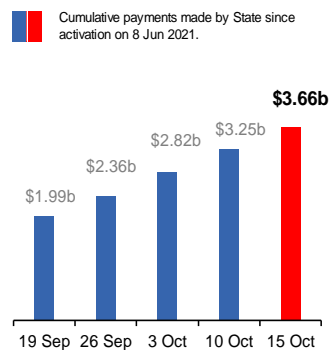
Victoria

Active lockdown (#6) since 6 Aug

716,000 people have received at least one COVID Disaster Payment.

\$3.66b paid out as at 15 Oct 2021.

\$428m paid in initial and reoccurring payments in the week ending 10 Oct 2021.



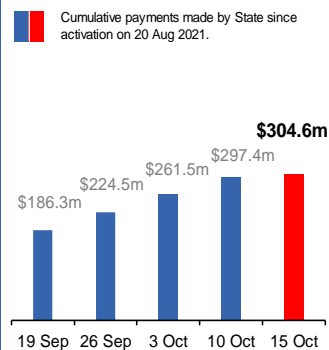
Australian Capital Territory

Active lockdown since 12 Aug

65,000 people have received at least one COVID Disaster Payment.

\$304.6m paid out as at 15 Oct 2021.

\$35m paid in initial and reoccurring payments in the week ending 10 Oct 2021.



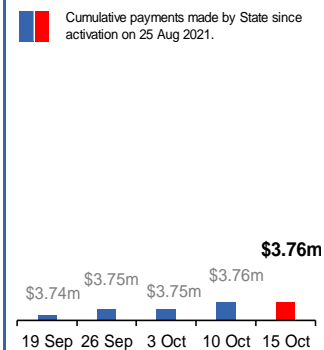
Northern Territory

Lockdown from 18 – 20 Jul
Claiming period ended 13 Sep

5,798 people have received at least one COVID Disaster Payment.

\$3.76m paid out as at 15 Oct 2021.

\$4,000 paid in initial payments in the week ending 10 Oct 2021.



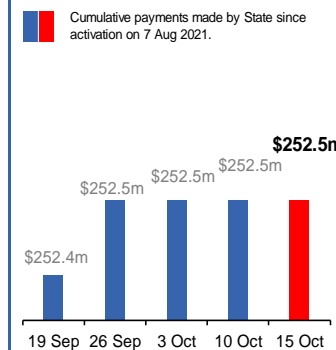
Queensland

Lockdown from 31 Jul – 11 Aug
Claiming period ended 28 Aug

196,000 people have received at least one COVID Disaster Payment.

\$252.5m paid out as at 15 Oct 2021.

\$19,000 paid in initial and reoccurring payments in the week ending 10 Oct 2021.



South Australia

Lockdown from 21 – 27 Jul
Claiming period ended 17 Aug

86,000 people have received at least one COVID Disaster Payment.

\$48.2m paid out as at 15 Oct 2021.

\$1,000 paid in initial payments in the week ending 10 Oct 2021.

