



Australian Government
Operation COVID Shield

COVID-19 Vaccine Roll-out

15 October 2021

Data as at:
14 Oct 2021

Total vaccine doses



31,994,741 total vaccine
doses administered nationally as at 14 October
+315,359 recorded in the last 24 hours



17,327,917

people have had at least one
dose

84.0%

of people over the age of 16
have had at least one dose



13,677,018

people are fully vaccinated

66.3%

of people over the age of 16 are
fully vaccinated

NSW
11,512,979
(+102,122 daily
increase)

VIC
8,561,187
(+99,326 daily
increase)

QLD
5,463,034
(+51,623 daily
increase)

WA
2,761,126
(+27,428 daily
increase)

TAS
670,360
(+6,638 daily
increase)

SA
1,943,749
(+18,520 daily
increase)

ACT
789,830
(+7,472 daily
increase)

NT
292,476
(+2,230 daily
increase)

*Administration state breakdown indicates state in which a vaccine was administered

**Overall dose count includes instances of more than two doses per person in a small number of cases.

Data as at:
14 Oct 2021

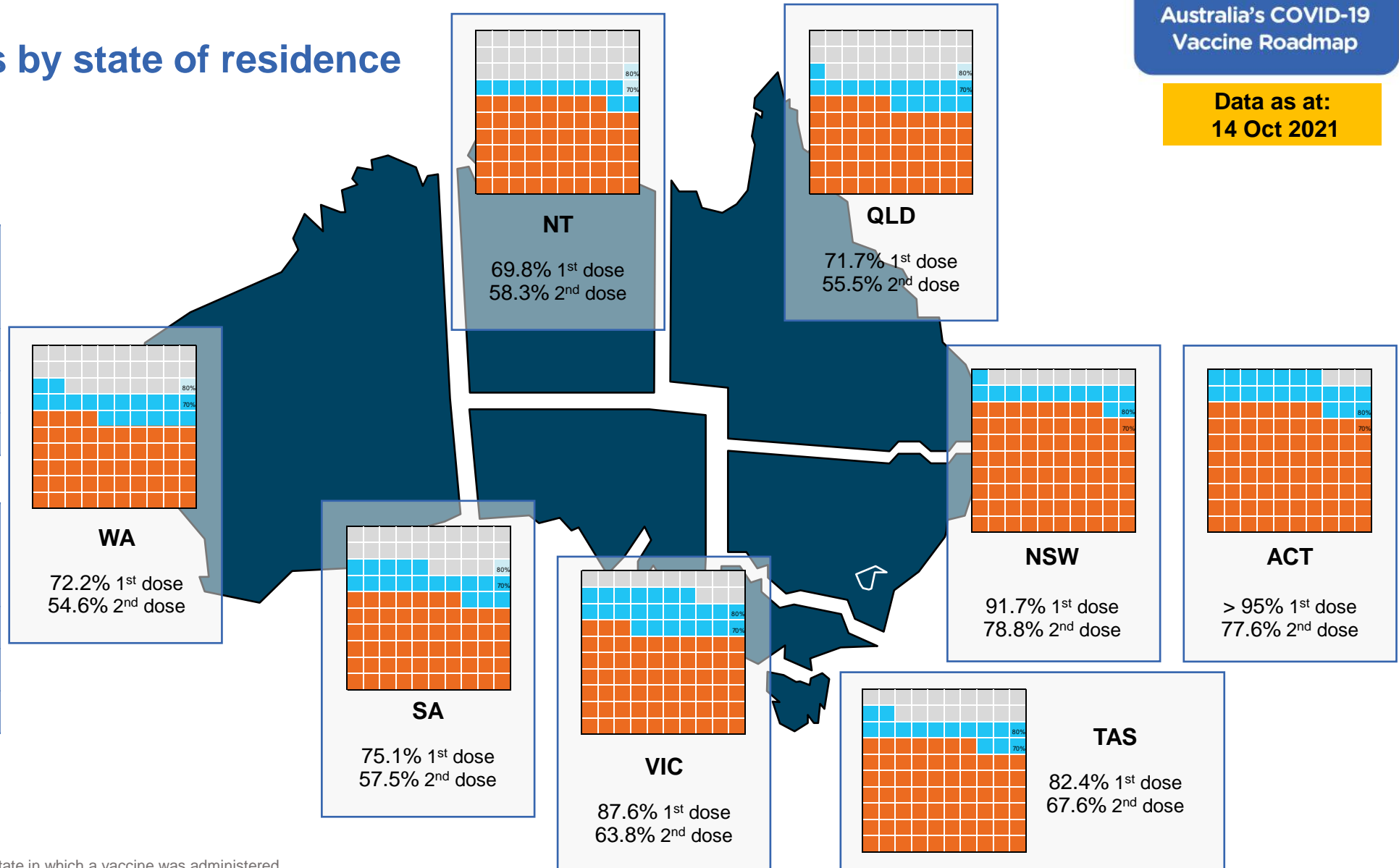
Vaccinations by state of residence

First doses

Age	Today	4 weeks ago	8 weeks ago
16+	84.0%	71.3%	52.0%
50+	92.7%	86.0%	75.3%
70+	>95%	92.8%	86.3%

Fully vaccinated

Age	Today	4 weeks ago	8 weeks ago
16+	66.3%	46.0%	29.7%
50+	78.9%	65.4%	43.6%
70+	84.4%	74.3%	57.5%



*Residential state may differ from the state in which a vaccine was administered

Commonwealth and Jurisdiction vaccine doses administered

Data as at:
14 Oct 2021



31,994,741 total vaccine
doses administered nationally as at 14 October
+ 315,359 recorded in the last 24 hours



13,300,530
doses administered by state
and territory facilities
+ 105,819
recorded in the last 24 hours



18,694,211
doses administered by
commonwealth facilities
+ 209,540
recorded in the last 24 hours

17,620,518 total vaccine doses
administered in primary care settings
1,073,693 total vaccine doses
administered in aged care and disability
settings

NSW	Jurisdictions	Commonwealth
Cumulative	3,895,104	7,617,875
Daily increase	23,559	78,563

VIC	Jurisdictions	Commonwealth
Cumulative	4,016,162	4,545,025
Daily increase	35,851	63,475

QLD	Jurisdictions	Commonwealth
Cumulative	2,212,583	3,250,451
Daily increase	15,999	35,624

WA	Jurisdictions	Commonwealth
Cumulative	1,335,494	1,425,632
Daily increase	12,679	14,749

TAS	Jurisdictions	Commonwealth
Cumulative	371,429	298,931
Daily increase	3,684	2,954

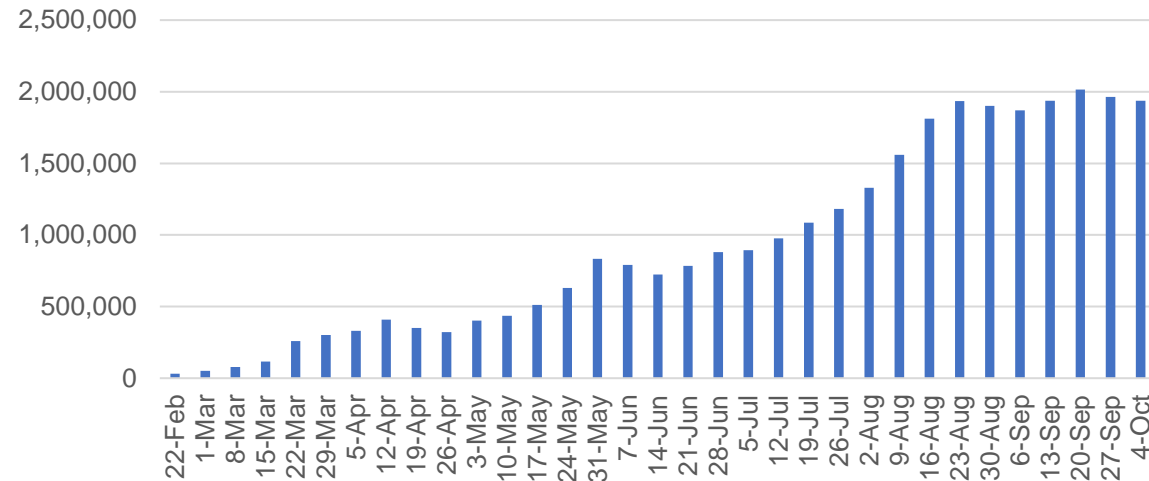
SA	Jurisdictions	Commonwealth
Cumulative	904,524	1,039,225
Daily increase	8,919	9,601

ACT	Jurisdictions	Commonwealth
Cumulative	389,061	400,769
Daily increase	3,553	3,919

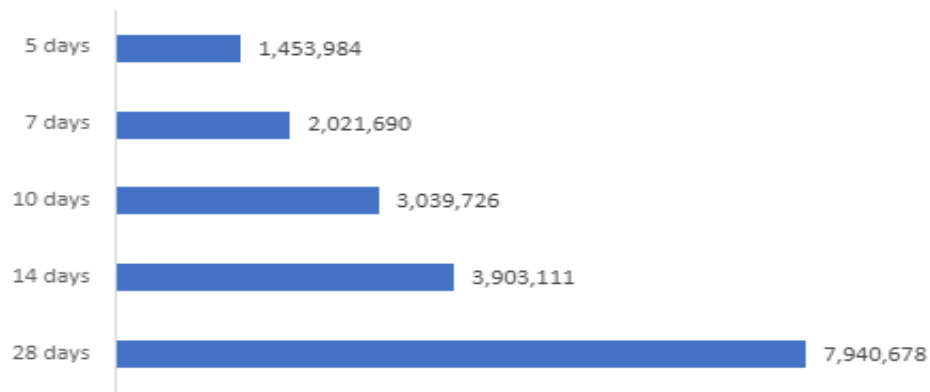
NT	Jurisdictions	Commonwealth
Cumulative	176,173	116,303
Daily increase	1,575	655

Vaccine milestone charts

Jabs in arms by week



Doses reported

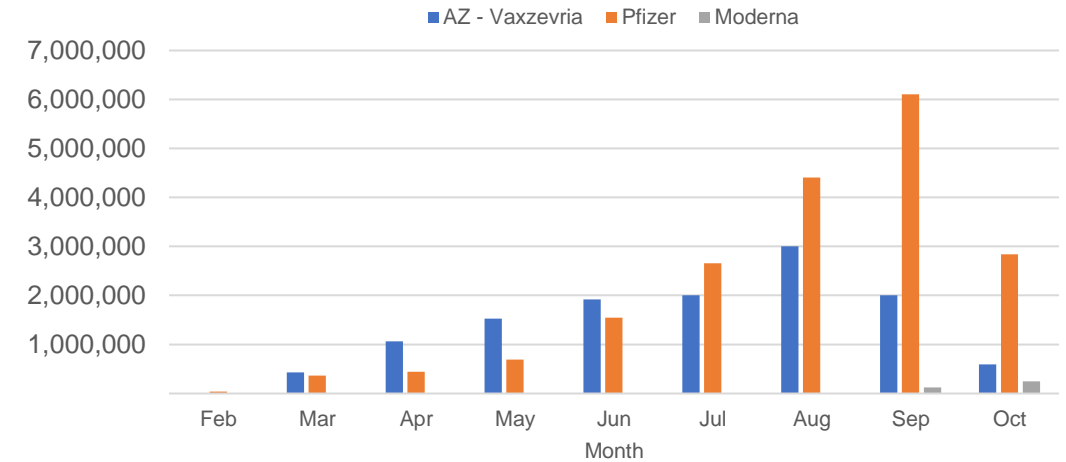


*Sourced from the Australian Immunisation Register.

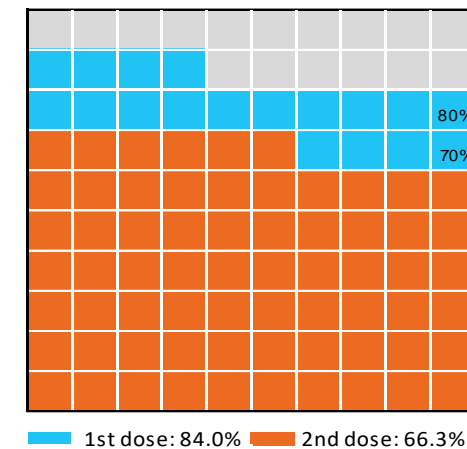
Data as at:
14 Oct 2021

Australia's COVID-19
Vaccine Roadmap

Doses by administration month and vaccine type



Eligible population percentage coverage



*Each square represents 1% of the national population.
Squares are filled as milestones are achieved.

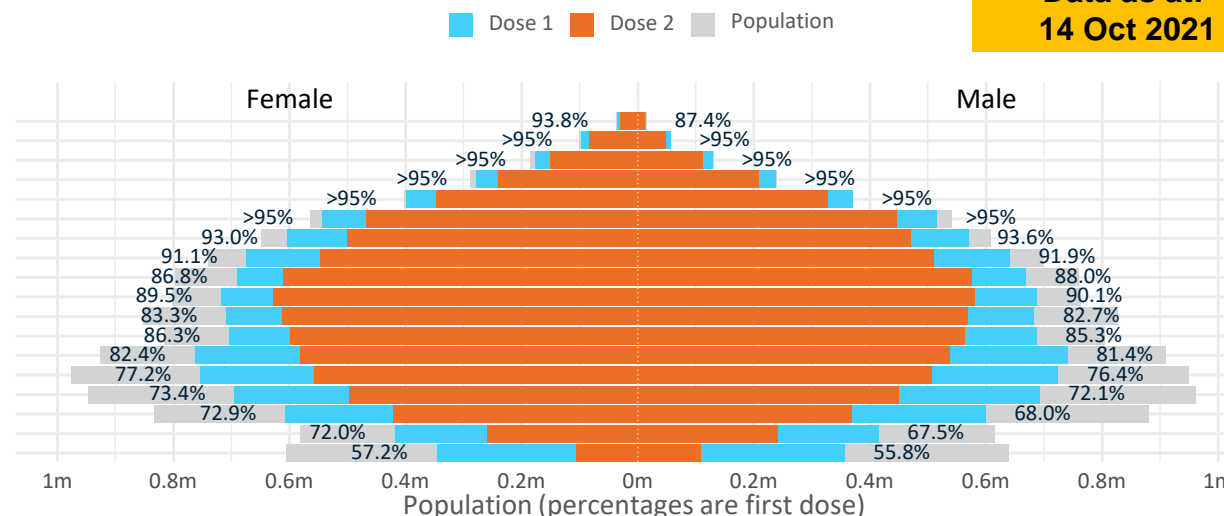
Doses by age and sex

First and second doses by age and sex

Australia's COVID-19
Vaccine Roadmap

Data as at:
14 Oct 2021

Age	Dose 1	Dose 2
95+	48,708 (92.1%)	41,472 (78.4%)
90-94	153,326 (>95%)	132,104 (83.4%)
85-89	305,936 (>95%)	263,969 (83.5%)
80-84	515,232 (>95%)	449,535 (85.1%)
75-79	769,994 (>95%)	675,292 (87.3%)
70-74	1,058,765 (>95%)	915,420 (82.8%)
65-69	1,174,792 (93.4%)	970,318 (77.1%)
60-64	1,315,709 (91.6%)	1,055,813 (73.5%)
55-59	1,360,824 (87.5%)	1,187,493 (76.3%)
50-54	1,406,188 (89.9%)	1,209,173 (77.3%)
45-49	1,392,746 (83.1%)	1,181,436 (70.5%)
40-44	1,392,379 (85.9%)	1,161,735 (71.7%)
35-39	1,507,110 (82.1%)	1,120,767 (61.1%)
30-34	1,484,594 (77.2%)	1,066,687 (55.5%)
25-29	1,396,277 (73.2%)	951,463 (49.9%)
20-24	1,211,413 (70.7%)	793,658 (46.4%)
16-19	833,924 (69.7%)	500,683 (41.9%)
12-15	702,459 (56.5%)	214,145 (17.2%)



	AUS	ACT	NSW	NT	QLD	SA	TAS	VIC	WA
16 and over - dose 1	17,327,917	334,161	6,018,275	133,013	2,949,993	1,081,593	362,830	4,738,353	1,527,983
16 and over - dose 2	13,677,018	267,028	5,174,571	111,012	2,282,799	828,887	297,568	3,450,356	1,154,233
16 and over - population	20,619,959*	344,037	6,565,651	190,571	4,112,707	1,440,400	440,172	5,407,574	2,114,978
16 and over % with dose 1	84.03%	>95%	91.66%	69.80%	71.73%	75.09%	82.43%	87.62%	72.25%
16 and over % with dose 2	66.33%	77.62%	78.81%	58.25%	55.51%	57.55%	67.60%	63.81%	54.57%
50 and over - dose 1	8,109,474	131,252	2,710,600	49,587	1,524,632	591,711	200,258	2,080,945	770,694
50 and over - dose 2	6,900,589	118,188	2,424,255	42,932	1,264,990	479,546	171,987	1,740,028	622,962
50 and over - population	8,749,703	127,802	2,807,793	62,280	1,758,855	674,384	220,036	2,211,211	885,370
50 and over % with dose 1	92.68%	>95%	>95%	79.62%	86.68%	87.74%	91.01%	94.11%	87.05%
50 and over % with dose 2	78.87%	92.48%	86.34%	68.93%	71.92%	71.11%	78.16%	78.69%	70.36%
70 and over - dose 1	2,851,961	42,676	955,370	10,596	541,656	226,826	74,576	717,285	262,909
70 and over - dose 2	2,477,792	38,804	862,548	9,164	466,947	187,448	64,597	614,790	217,791
70 and over - population	2,934,706	39,946	962,606	12,343	577,767	240,514	77,155	743,519	280,281
70 and over % with dose 1	>95%	>95%	>95%	85.85%	93.75%	94.31%	>95%	>95%	93.80%
70 and over % with dose 2	84.43%	>95%	89.61%	74.24%	80.82%	77.94%	83.72%	82.69%	77.70%
12 to 15 - dose 1	702,459	18,146	285,323	5,125	99,379	26,094	8,908	214,917	40,313
12 to 15 - dose 2	214,145	3,911	113,654	2,733	30,228	5,457	2,055	48,491	6,562
12 to 15 - population	1,243,990	19,693	390,330	13,060	270,146	82,747	26,308	308,611	132,869
12 to 15 % with dose 1	56.47%	92.14%	73.10%	39.24%	36.79%	31.53%	33.86%	69.64%	30.34%
12 to 15 % with dose 2	17.21%	19.86%	29.12%	20.93%	11.19%	6.59%	7.81%	15.71%	4.94%

*National population will not equal sum of listed jurisdictions due to a small number of people counted in national population residing in some 'other' territories. Sum of state doses will not add to national total as some records are unable to be geocoded to a State or Territory.

NB: ACT numbers have been impacted today by the bulk re-assignment of some doses previously allocated to the ACT, that are now classified as 'Unknown'.

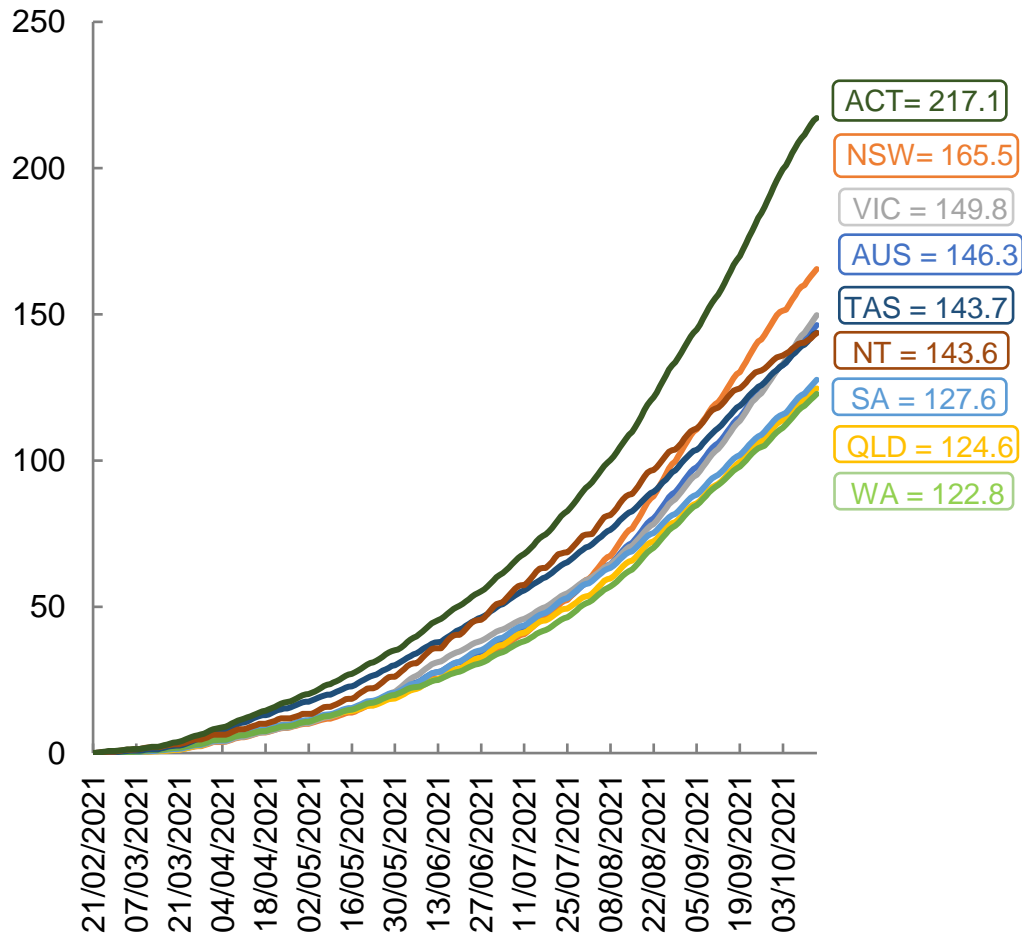
Doses sourced from Australian Immunisation Register, population from ABS ERP June 2020

Vaccinations by location

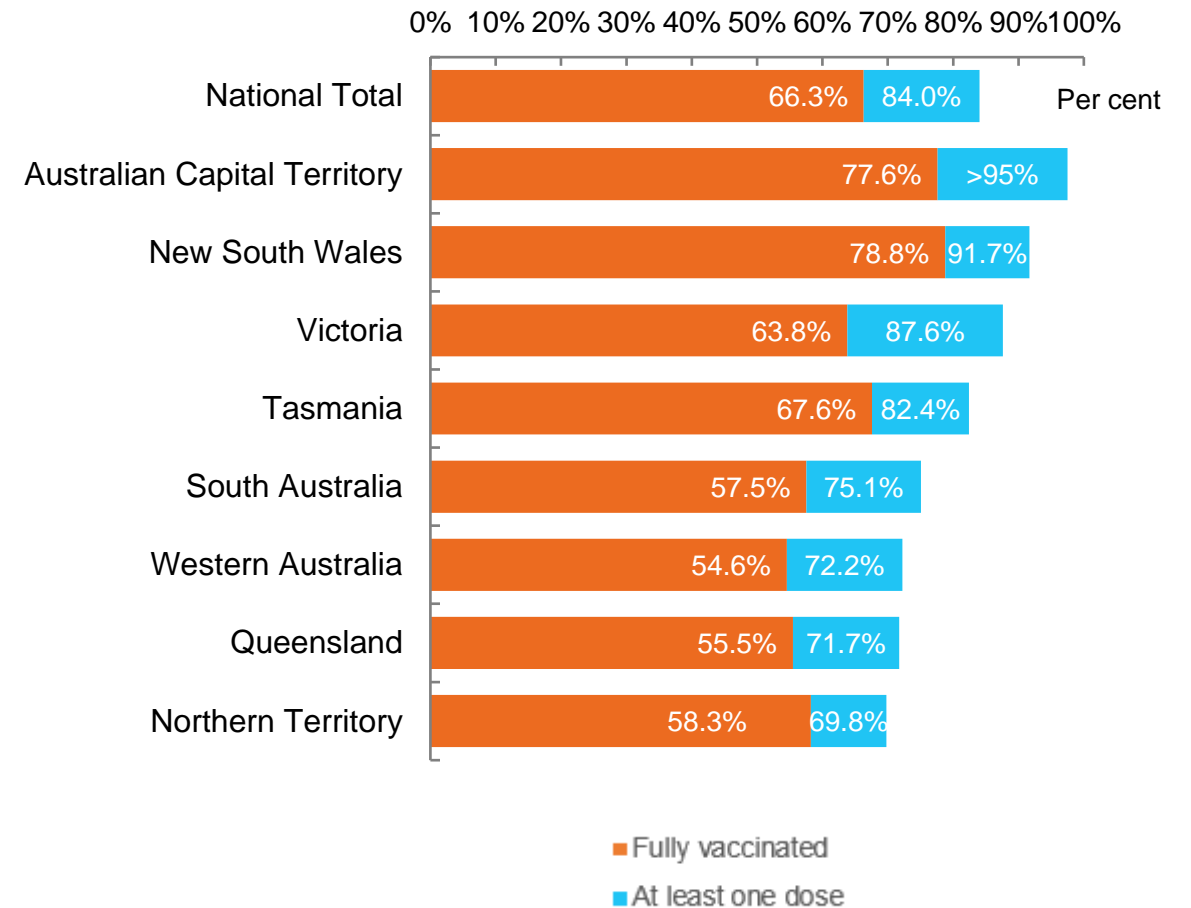
Data as at:
14 Oct 2021

Australia's COVID-19
Vaccine Roadmap

Cumulative total doses administered vs state populations*



First and Second Doses by state of residence



*Not an indication of percentage vaccinated, numbers will exceed 100 due to multiple doses required per person of the population

Aboriginal and Torres Strait Islander peoples

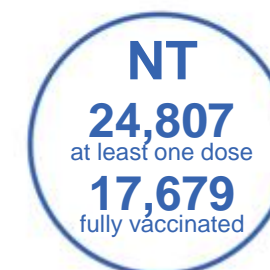
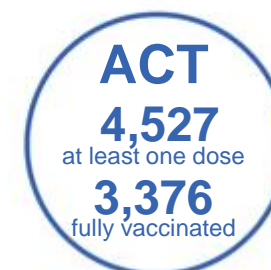
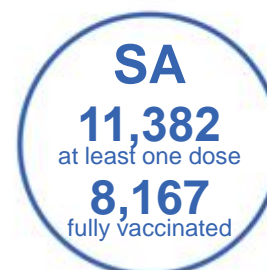
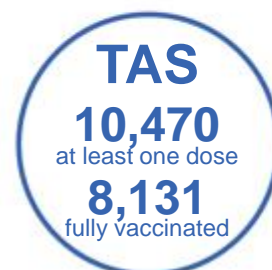
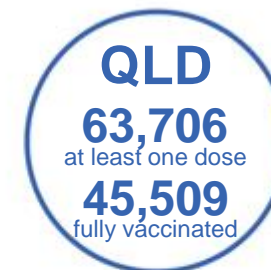
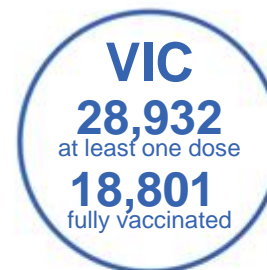
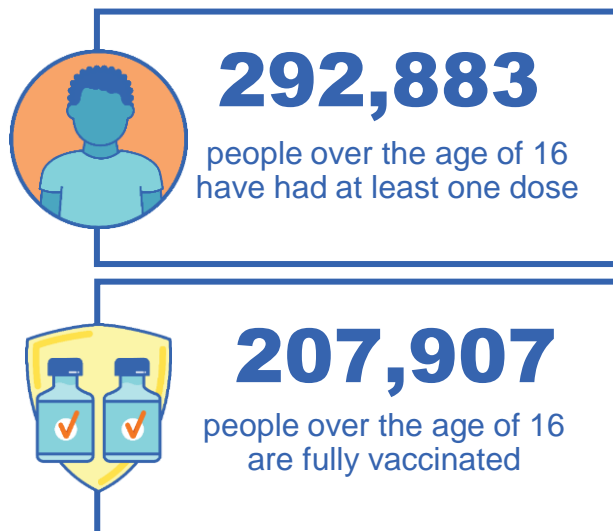
Number of people vaccinated

Data as at:
10 Oct 2021
Updated weekly

Australia's COVID-19
Vaccine Roadmap

167 Aboriginal community controlled health services (ACCHS)

0#	48	26	39	12	3	21	18
ACT	NSW	NT	QLD	SA	TAS	VIC	WA



7,866 people with at least one dose
4,768 people fully vaccinated

residing in other territories or with missing residential information

Source: Australian Immunisation Register

*Identifying as Aboriginal and Torres Strait Islander is optional and the estimated population may be under reported.

**Includes all Aboriginal and Torres Strait Islander peoples who have received a vaccination, not limited to those administered in an ACCHS setting

***Updated weekly.

#ACCHS in the ACT are currently operating as a Commonwealth Vaccine Clinics so not included to avoid double counting

Data as at:
14 Oct 2021

Commonwealth primary care



Primary care vaccine administration sites

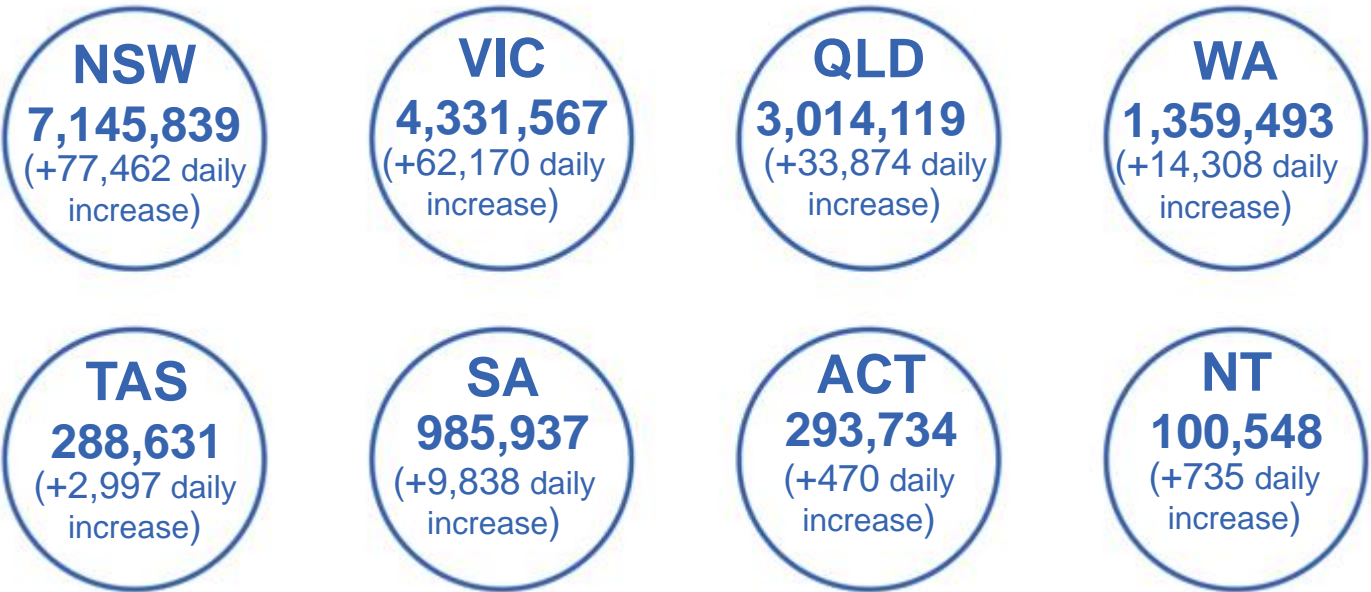
5,543	137	169	3,349
GPs	CVCs	ACCHS	Pharmacies



17,620,518 total vaccine doses administered primary care settings as at 14 October
+ 205,490 recorded in the last 24 hours

Primary care vaccinations by provider type

	Doses administered	Daily increase	7 day increase
General Practice* includes other Commonwealth	16,397,892	173,512	1,049,678
Pharmacy	1,222,626	31,978	194,940



100,650 doses administered to persons residing in other territories or with missing residential information

*General practice includes Commonwealth Vaccination Clinics, Aboriginal Community Health Centres, Royal Flying Doctor Service and other Commonwealth vaccination facilities

Source: Australian Immunisation Register

Data as at:
14 Oct 2021

Commonwealth aged care and disability doses administered



1,073,693 (+ 4,050 last 24 hours)

Total vaccine doses administered in aged care and disability facilities as at 14 October

Number of doses administered as part of the Commonwealth aged and disability care rollout

NSW
502,068
(+1,548 daily increase)

VIC
191,028
(+1,035 daily increase)

QLD
196,049
(+1,174 daily increase)

WA
66,579
(+93 daily increase)

TAS
16,868
(+6 daily increase)

SA
58,413
(+80 daily increase)

ACT
12,469
(-88# daily increase)

NT
5,763
(+2 daily increase)

*Sourced from the Australian Immunisation Register. Includes all persons vaccinated at participating residential aged care, disability and related industry settings.

**State level breakdown indicates the residential location and may not align to the state in which the vaccination occurred.

#Numbers are calculated as difference in daily cumulative reported numbers to allow for historical corrections in all data sources. This can occasionally result in negative numbers, such as for ACT, where historical details about doses have been updated.

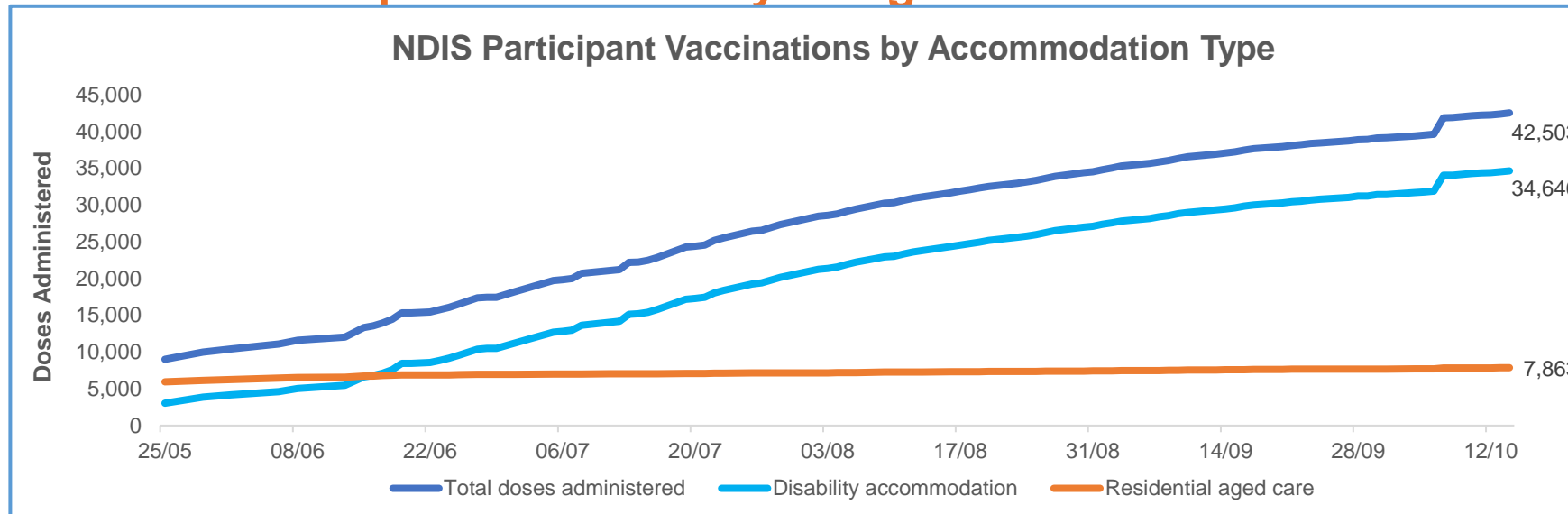
24,456

doses administered to persons residing in other territories or with missing residential information

Data as at:
14 Oct 2021*

Vaccination rate of people with disability and the disability workforce

Phase 1a – People with disability living in shared accommodation



	Total people with at least one dose	People fully vaccinated	Total number of individuals in cohort	Total doses administered	% People with at least one dose	% People fully vaccinated
NDIS participants living in shared accommodation **	22,259	20,244	27,293	42,503	81.6%	74.2%
NDIS screened workers ***	168,902	146,172	211,265	315,074	79.9%	69.2%



* Updates are available Monday to Friday on participants, and bi-weekly for workers, numbers may be up to four days old.

** Shared accommodation means two or more people with disability living in shared residential accommodation and NDIS participants living in Residential Aged Care accommodation as per the eligibility criteria of Phase 1a.

*** Total number of workers within the NDIS Commission Worker Screening database who have ever been successfully screened and linked to an NDIS registered provider or participant.

Source: Linkage between National Disability Insurance Agency data, NDIS Quality and Safeguards Commission data and the Australian Immunisation Register.

Following ongoing work by Services Australia to improve data matching between Medicare, the Australian Immunisation Register and National Disability Insurance Agency records, improvements to data reporting have been applied from 7 October 2021. These have resulted in a one off increase in reported numbers to include participants who were previously not accurately data matched.

Residential aged care vaccination rollout

Residential aged care facilities status

100% Commonwealth facilities visited (2,573 planned sites)

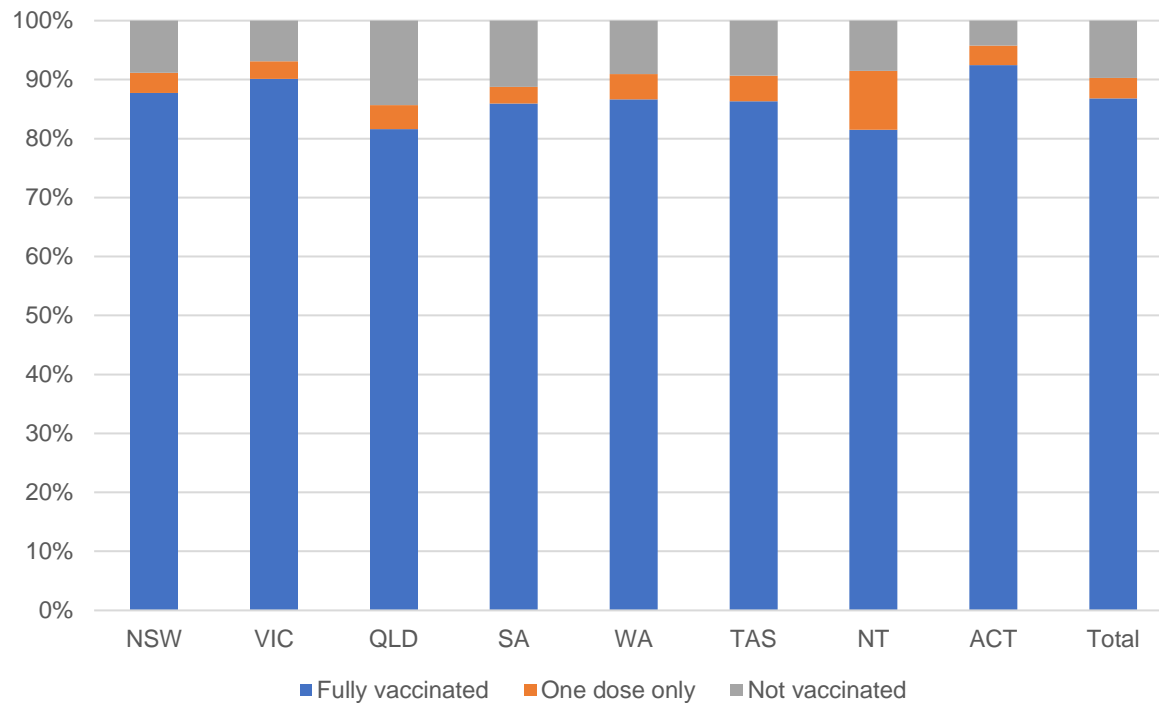
161,738 People fully vaccinated

90.3% Participation rate

Australia's COVID-19 Vaccine Roadmap

Data as at:
14 October 2021

Aged care resident vaccinations



Aged care worker vaccinations

Jurisdictions	Total workers with at least one dose	Workers fully vaccinated	% Workers with at least one dose	% Workers fully vaccinated
NSW	78,448	70,623	99.7%	89.8%
VIC	71,349	63,531	99.7%	88.8%
QLD	47,990	40,806	99.9%	84.9%
SA	27,198	24,058	100.0%	88.4%
WA	23,353	19,373	99.8%	82.8%
TAS	7,580	6,682	100.0%	88.1%
NT	809	780	99.3%	95.7%
ACT	2,942	2,713	100.0%	92.2%
Total	259,669	228,566	99.8%	87.8%

Source: My Aged Care Portal staff vaccination progress

**Resident vaccination information is reported manually by service providers

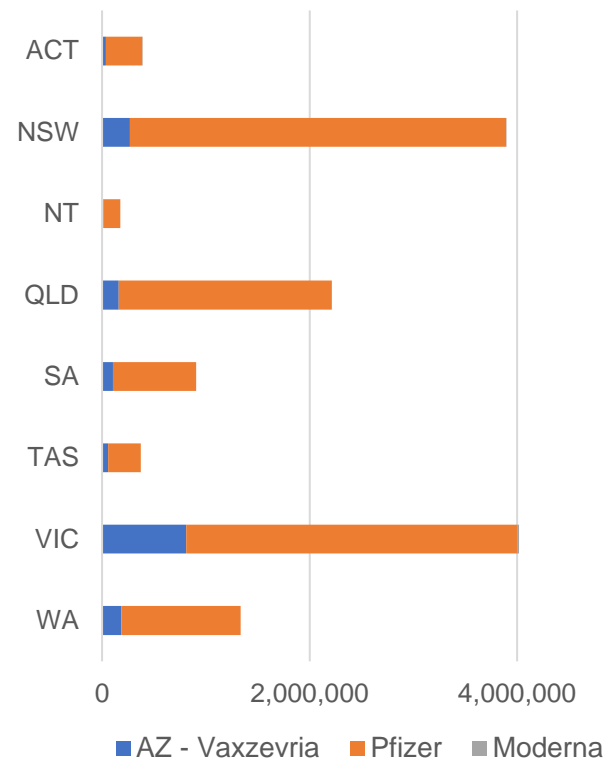
*Status updates are provided by facilities at least once per week. Reporting is updated Monday to Friday to encompass different facility updates being made on different days.

Data is sourced directly from Aged Care Service Providers and is not drawn or closely aligned with data from AIR due to inconsistencies and potential lags in uploading of records.

Data as at:
14 Oct 2021

Jurisdiction administered

Total vaccine doses administered in State and Territory clinics as at 14 October



13,300,530 total vaccine doses administered
in State and Territory clinics as at 14 October
+ **105,819** recorded in the last 24 hours
+ **738,334** recorded in the last 7 days

NSW
3,895,104
(+23,559 daily increase)

VIC
4,016,162
(+35,851 daily increase)

QLD
2,212,583
(+15,999 daily increase)

WA
1,335,494
(+12,679 daily increase)

TAS
371,429
(+3,684 daily increase)

SA
904,524
(+8,919 daily increase)

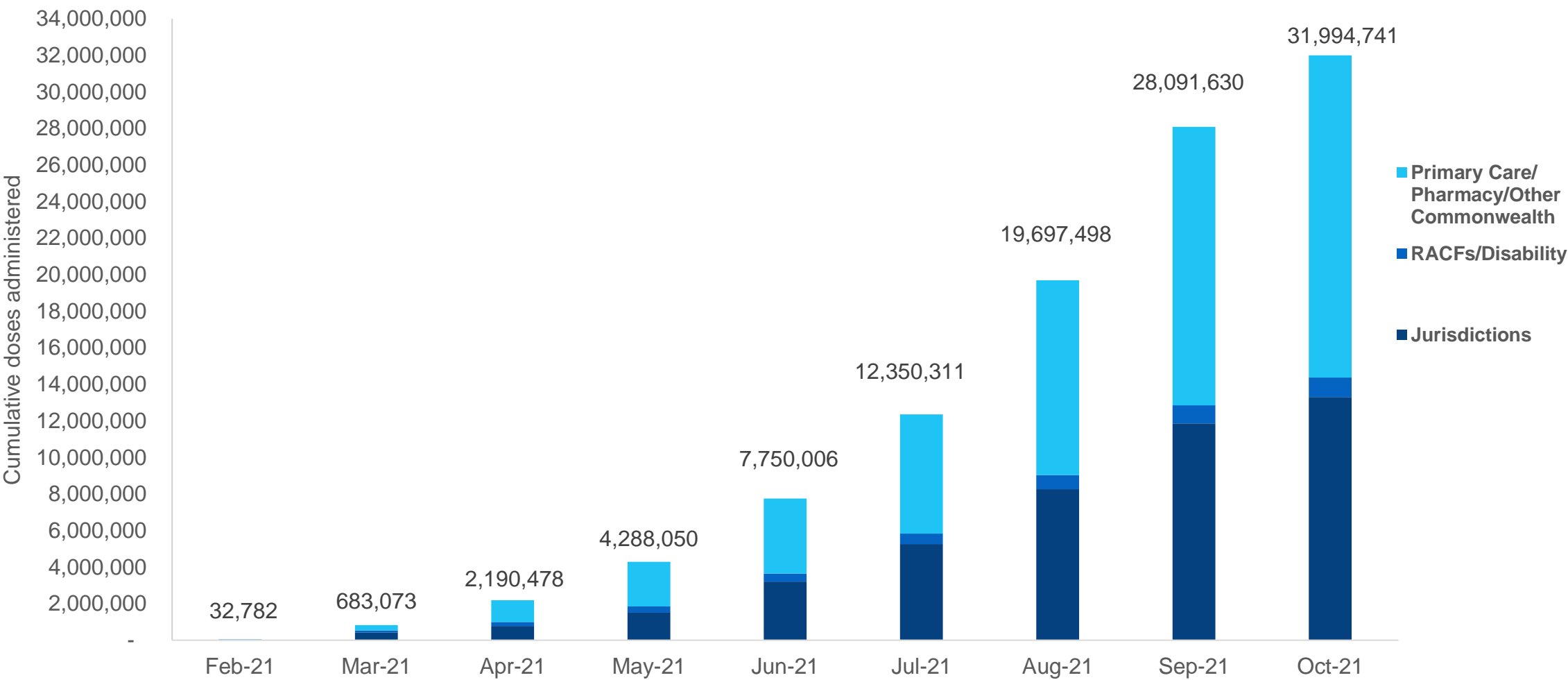
ACT
389,061
(+3,553 daily increase)

NT
176,173
(+1,575 daily increase)

*Sourced from the Australian Immunisation Register and self-reported data. Numbers are calculated as difference in daily cumulative reported numbers to allow for historical corrections in all self-reported data sources.

Cumulative doses administered by channel

Data as at:
14 Oct 2021



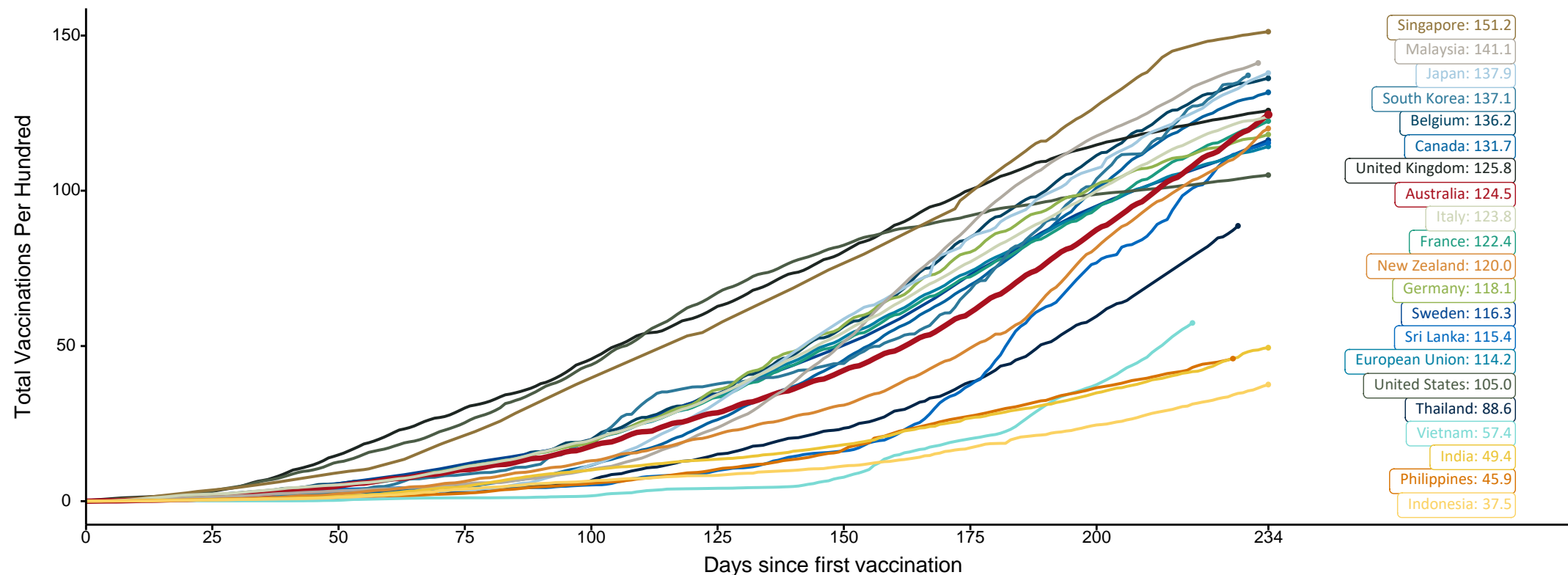
Source: Australian Immunisation Register

Doses at equivalent stages of rollout (Day 234)

Data as at:
14 Oct 2021

The x-axis is truncated at the length of Australia's vaccination program. Countries with intermittent reporting have had their doses per 100 imputed to Australia's current stage of rollout. Israel excluded as it is beyond scale of the graph

Cumulative doses administered (14 Oct): **31,994,741**

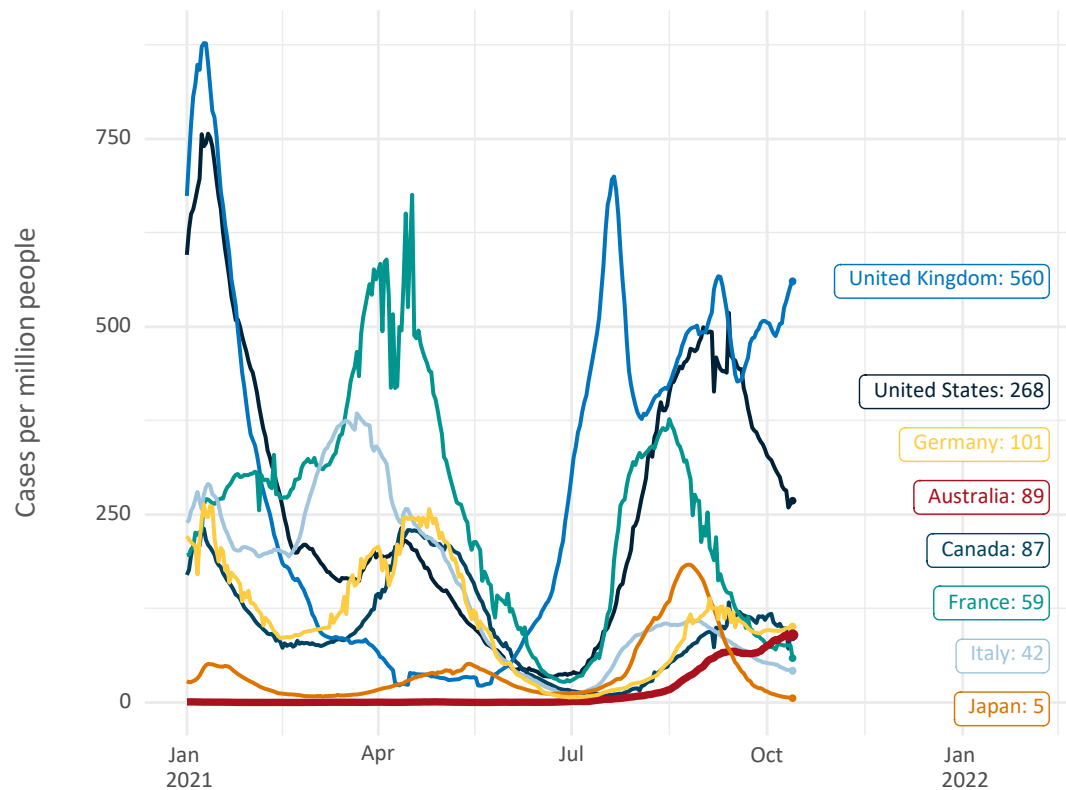


Note: From 15 September 2021, data for Australia includes all doses administered to people 12 and over. Prior to 15 September, data was for 16 and over
Source: Department of Health (Australia), Our World in Data (international)
Latest data: 14 October

International data – COVID-19

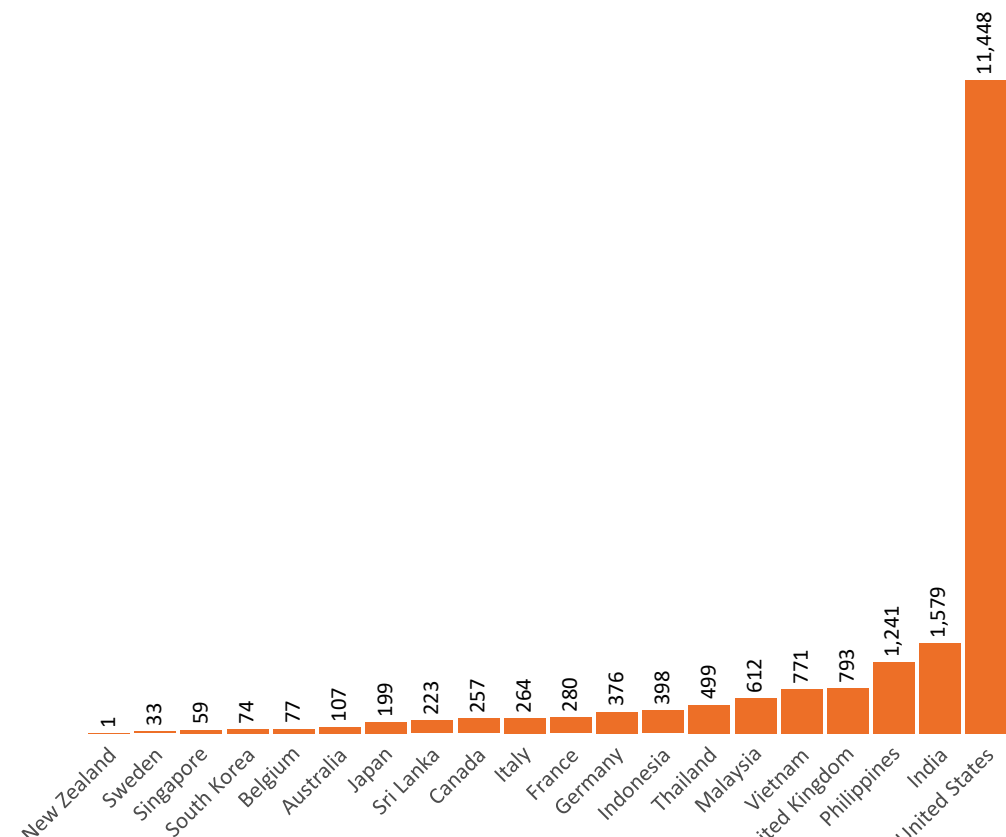
Data as at:
14 Oct 2021

New daily cases per million in 2021, Australia and G7 countries
Smoothed - 7 day average



Source: OWID
Data downloaded: 15 Oct 2021 08:11
Latest data: 13 Oct 2021

COVID-19 deaths in past 7 days - Australia and select countries

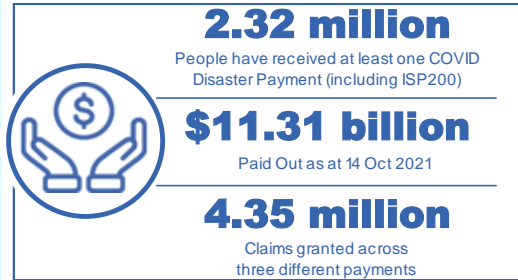


Source: OWID
Data downloaded: 15 Oct 2021 08:11
Latest data: 13 Oct 2021

Pandemic Response Payments

Australia's COVID-19
Vaccine Roadmap

Data as at midnight:
14 Oct 2021



COVID Disaster Payment:	4.25 million claims received - 2.14 million individuals paid a total of \$10.94 billion.
\$200 Income Support Payment:	259,000 claims received - 175,000 individuals paid a total of \$236.33 million.
Pandemic Leave Disaster Payment:	95,000 claims received - 82,000 individuals paid a total of \$132.33 million.



COVID Disaster Payment
assisting during a lockdown event in a Commonwealth hotspot.

Income Support Payment \$200
for income support recipients who lost at least 8 hours of work.

Pandemic Leave Disaster Payment
for those who have to self-isolate, quarantine or care.

For more information visit:
servicesaustralia.gov.au

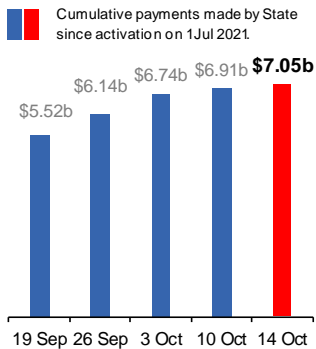
COVID-19 DISASTER PAYMENTS

New South Wales
Active lockdown since 24 Jun
Partial reopening from 10 Oct

1.07m people have received at least one COVID Disaster Payment.

\$7.05b paid out as at 14 Oct 2021.

\$177m paid in initial and reoccurring payments in the week ending 10 Oct 2021.

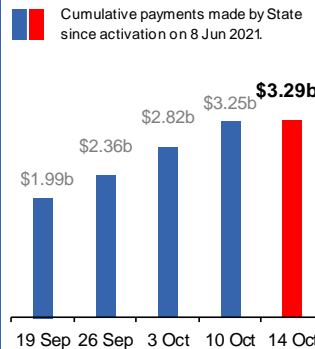


Victoria
Active lockdown (#6) since 6 Aug

713,000 people have received at least one COVID Disaster Payment.

\$3.29b paid out as at 14 Oct 2021.

\$428m paid in initial and reoccurring payments in the week ending 10 Oct 2021.

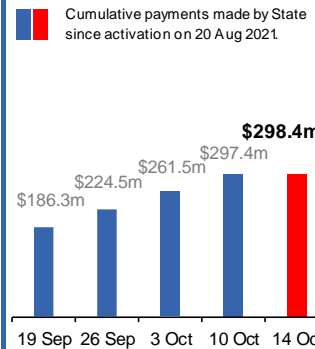


Australian Capital Territory
Active lockdown since 12 Aug

64,000 people have received at least one COVID Disaster Payment.

\$298.4m paid out as at 14 Oct 2021.

\$35m paid in initial and reoccurring payments in the week ending 10 Oct 2021.

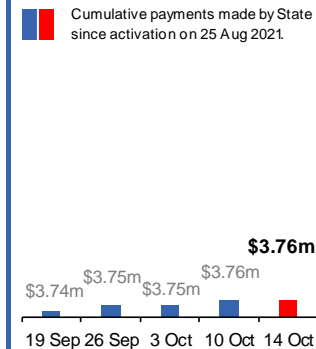


Northern Territory
Lockdown from 18 – 20 Jul
Claiming period ended 13 Sep

5,798 people have received at least one COVID Disaster Payment.

\$3.76m paid out as at 14 Oct 2021.

\$4,000 paid in initial and reoccurring payments in the week ending 10 Oct 2021.

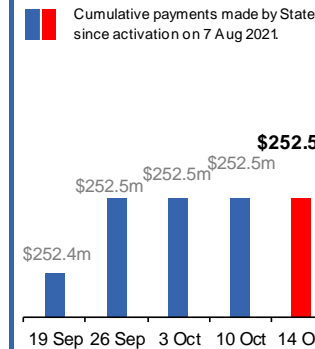


Queensland
Lockdown from 31 Jul – 11 Aug
Claiming period ended 28 Aug

196,000 people have received at least one COVID Disaster Payment.

\$252.5m paid out as at 14 Oct 2021.

\$19,000 paid in initial and reoccurring payments in the week ending 10 Oct 2021.



South Australia
Lockdown from 21 – 27 Jul
Claiming period ended 17 Aug

86,000 people have received at least one COVID Disaster Payment.

\$48.2m paid out as at 14 Oct 2021.

\$1,000 paid in initial and reoccurring payments in the week ending 10 Oct 2021.

