



Australian Government
Operation COVID Shield

COVID-19 Vaccine Roll-out

12 October 2021

Data as at:
11 Oct 2021

Total vaccine doses



31,020,482 total vaccine
doses administered nationally as at 11 October
+313,635 recorded in the last 24 hours



17,078,268

people have had at least one
dose

82.8%

of people over the age of 16
have had at least one dose



13,065,338

people are fully vaccinated

63.4%

of people over the age of 16 are
fully vaccinated

NSW
11,173,538
(+118,477 daily
increase)

VIC
8,266,941
(+91,042 daily
increase)

QLD
5,310,715
(+49,635 daily
increase)

WA
2,677,377
(+24,653 daily
increase)

TAS
651,854
(+4,263 daily
increase)

SA
1,886,422
(+17,551 daily
increase)

ACT
767,058
(+6,510 daily
increase)

NT
286,577
(+1,504 daily
increase)

*Administration state breakdown indicates state in which a vaccine was administered

**Overall dose count includes instances of more than two doses per person in a small number of cases.

Data as at:
11 Oct 2021

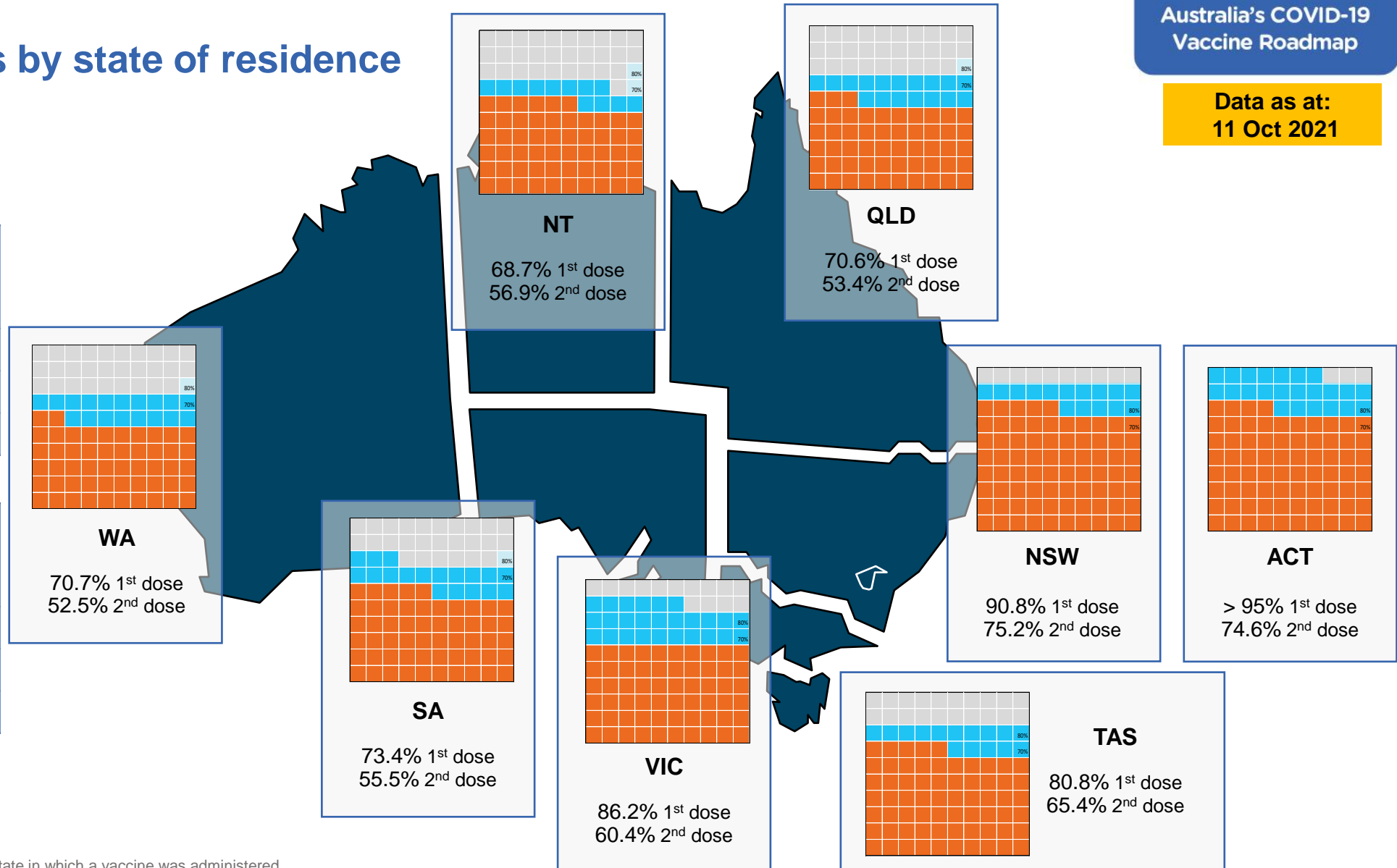
Vaccinations by state of residence

First doses

Age	Today	4 weeks ago	8 weeks ago
16+	82.8%	69.1%	49.6%
50+	91.9%	84.8%	73.6%
70+	>95%	92.0%	85.1%

Fully vaccinated

Age	Today	4 weeks ago	8 weeks ago
16+	63.4%	43.8%	27.6%
50+	76.9%	63.2%	40.2%
70+	82.8%	72.3%	54.5%



*Residential state may differ from the state in which a vaccine was administered

Commonwealth and Jurisdiction vaccine doses administered

Data as at:
11 Oct 2021



31,020,482 total vaccine
doses administered nationally as at 11 October
+ 313,635 recorded in the last 24 hours



12,968,912
doses administered by state
and territory facilities
+ 100,142
recorded in the last 24 hours

NSW	Jurisdictions	Commonwealth
Cumulative	3,812,143	7,361,395
Daily increase	23,427	95,050

TAS	Jurisdictions	Commonwealth
Cumulative	361,134	290,720
Daily increase	1,775	2,488

VIC	Jurisdictions	Commonwealth
Cumulative	3,907,706	4,359,235
Daily increase	33,766	57,276

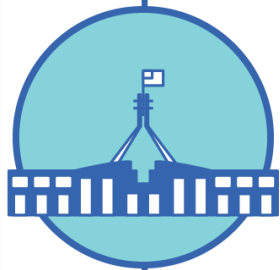
SA	Jurisdictions	Commonwealth
Cumulative	877,560	1,008,862
Daily increase	8,879	8,672

QLD	Jurisdictions	Commonwealth
Cumulative	2,162,404	3,148,311
Daily increase	17,560	32,075

ACT	Jurisdictions	Commonwealth
Cumulative	377,323	389,735
Daily increase	2,913	3,597

WA	Jurisdictions	Commonwealth
Cumulative	1,298,043	1,379,334
Daily increase	10,908	13,745

NT	Jurisdictions	Commonwealth
Cumulative	172,599	113,978
Daily increase	914	590

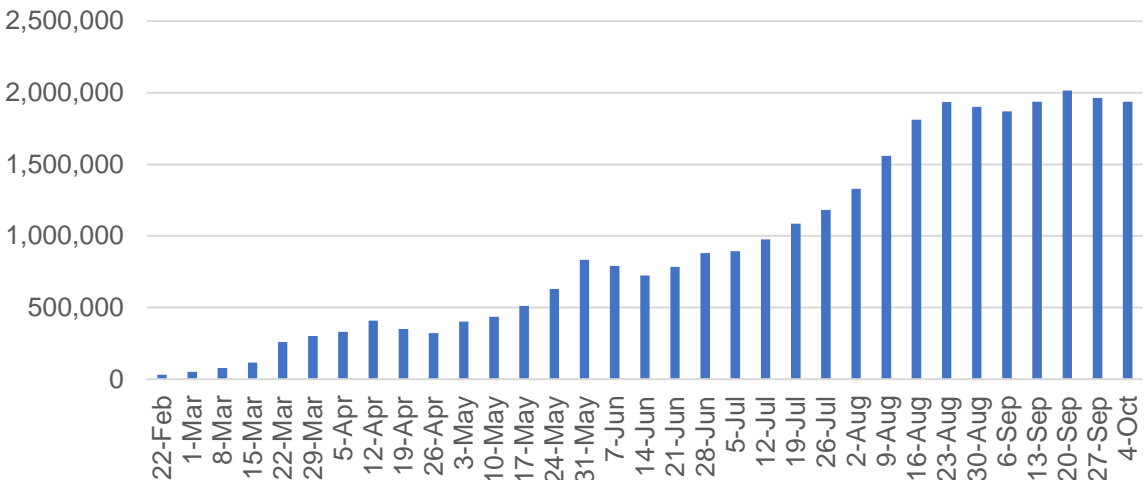


18,051,570
doses administered by
commonwealth facilities
+ 213,493
recorded in the last 24 hours

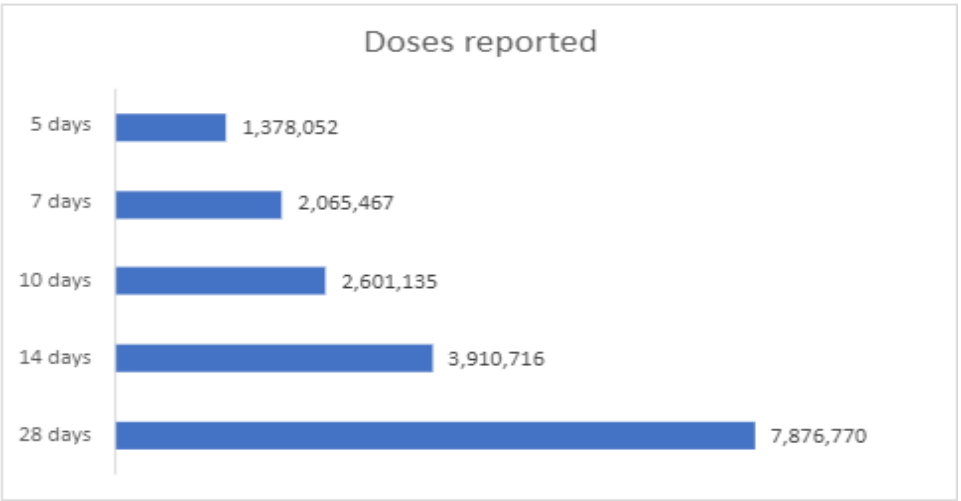
16,989,562 total vaccine doses
administered in primary care settings
1,062,008 total vaccine doses
administered in aged care and disability
settings

Vaccine milestone charts

Jabs in arms by week



Doses reported

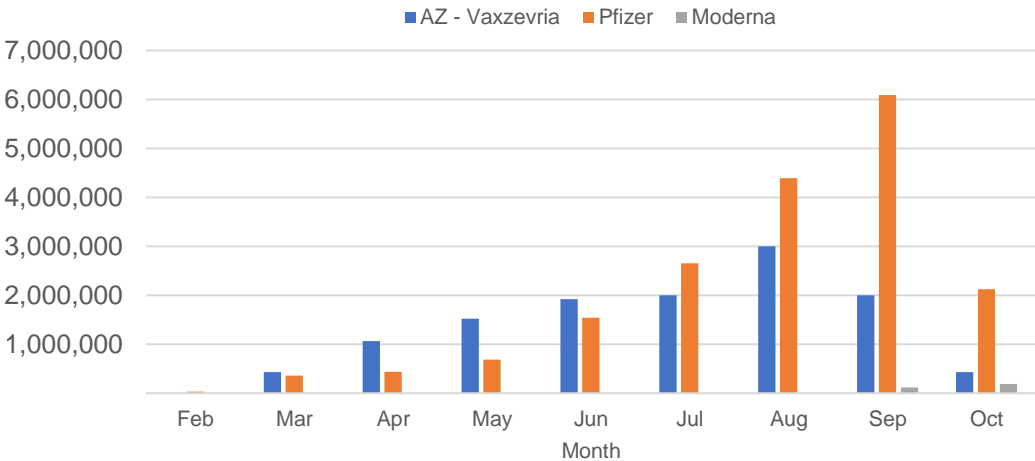


*Sourced from the Australian Immunisation Register.

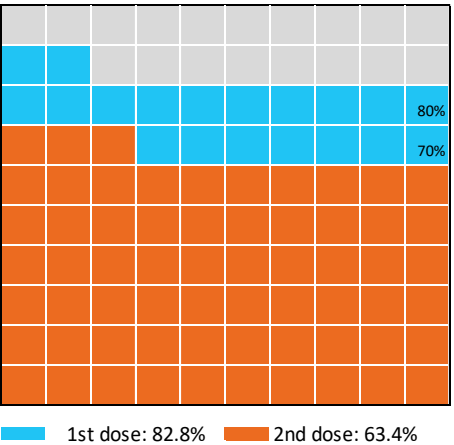
Data as at:
11 Oct 2021

Australia's COVID-19
Vaccine Roadmap

Doses by administration month and vaccine type



Eligible population percentage coverage



*Each square represents 1% of the national population. Squares are filled as milestones are achieved.

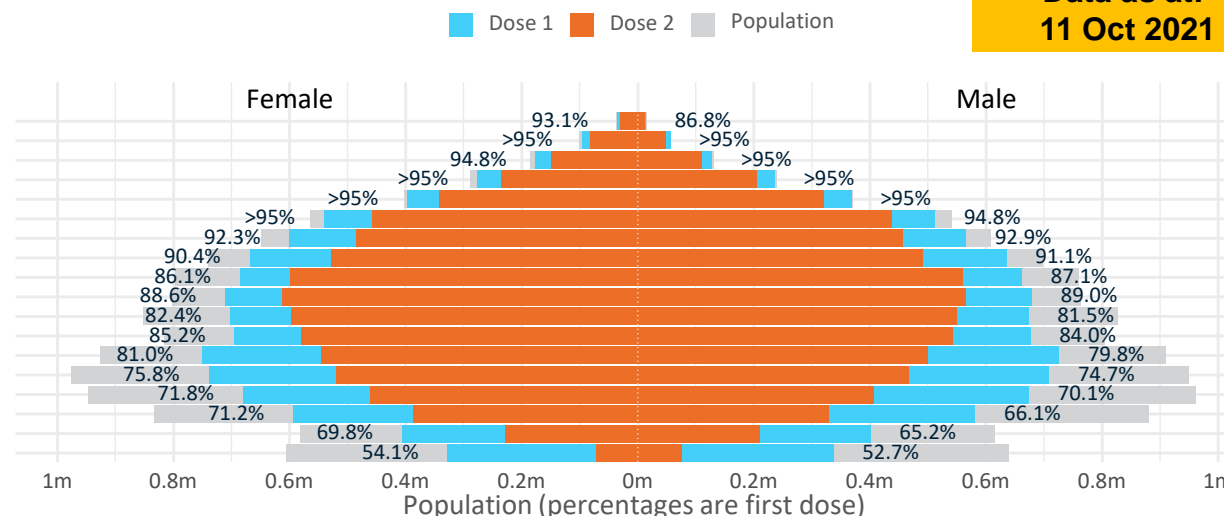
Doses by age and sex

First and second doses by age and sex

Australia's COVID-19
Vaccine Roadmap

Data as at:
11 Oct 2021

Age	Dose 1	Dose 2
95+	48,380 (91.4%)	40,903 (77.3%)
90-94	152,391 (>95%)	129,950 (82.0%)
85-89	304,016 (>95%)	259,302 (82.0%)
80-84	512,269 (>95%)	441,234 (83.5%)
75-79	765,314 (>95%)	662,375 (85.6%)
70-74	1,052,961 (>95%)	896,076 (81.1%)
65-69	1,166,294 (92.7%)	941,952 (74.9%)
60-64	1,304,913 (90.8%)	1,020,763 (71.1%)
55-59	1,348,163 (86.7%)	1,159,108 (74.5%)
50-54	1,390,169 (88.9%)	1,177,422 (75.3%)
45-49	1,375,210 (82.0%)	1,146,790 (68.4%)
40-44	1,373,000 (84.7%)	1,123,152 (69.3%)
35-39	1,479,727 (80.6%)	1,046,976 (57.1%)
30-34	1,454,820 (75.6%)	989,120 (51.4%)
25-29	1,363,229 (71.5%)	872,257 (45.8%)
20-24	1,180,172 (68.9%)	718,722 (42.0%)
16-19	807,240 (67.5%)	439,236 (36.7%)
12-15	664,337 (53.4%)	147,119 (11.8%)



	AUS	ACT	NSW	NT	QLD	SA	TAS	VIC	WA
16 and over - dose 1	17,078,268	334,425	5,959,853	130,840	2,903,044	1,057,835	355,534	4,662,250	1,494,538
16 and over - dose 2	13,065,338	256,495	4,939,216	108,378	2,194,139	800,002	288,032	3,264,584	1,111,297
16 and over - population	20,619,959*	344,037	6,565,651	190,571	4,112,707	1,440,400	440,172	5,407,574	2,114,978
16 and over % with dose 1	82.82%	>95%	90.77%	68.66%	70.59%	73.44%	80.77%	86.22%	70.66%
16 and over % with dose 2	63.36%	74.55%	75.23%	56.87%	53.35%	55.54%	65.44%	60.37%	52.54%
50 and over - dose 1	8,044,870	131,408	2,695,732	49,109	1,511,843	585,196	198,388	2,061,197	762,572
50 and over - dose 2	6,729,085	116,937	2,355,895	42,226	1,232,708	467,062	169,211	1,702,109	608,277
50 and over - population	8,749,703	127,802	2,807,793	62,280	1,758,855	674,384	220,036	2,211,211	885,370
50 and over % with dose 1	91.94%	>95%	>95%	78.85%	85.96%	86.77%	90.16%	93.22%	86.13%
50 and over % with dose 2	76.91%	91.50%	83.91%	67.80%	70.09%	69.26%	76.90%	76.98%	68.70%
70 and over - dose 1	2,835,331	42,670	951,027	10,517	538,687	225,118	74,123	712,263	260,986
70 and over - dose 2	2,429,840	38,414	843,231	9,047	458,328	183,316	63,806	604,739	213,530
70 and over - population	2,934,706	39,946	962,606	12,343	577,767	240,514	77,155	743,519	280,281
70 and over % with dose 1	>95%	>95%	>95%	85.21%	93.24%	93.60%	>95%	>95%	93.12%
70 and over % with dose 2	82.80%	>95%	87.60%	73.30%	79.33%	76.22%	82.70%	81.33%	76.18%
12 to 15 - dose 1	664,337	17,527	272,134	4,794	93,741	23,433	7,794	203,330	37,578
12 to 15 - dose 2	147,119	2,553	79,319	2,363	21,755	3,755	1,583	30,597	4,438
12 to 15 - population	1,243,990	19,693	390,330	13,060	270,146	82,747	26,308	308,611	132,869
12 to 15 % with dose 1	53.40%	89.00%	69.72%	36.71%	34.70%	28.32%	29.63%	65.89%	28.28%
12 to 15 % with dose 2	11.83%	12.96%	20.32%	18.09%	8.05%	4.54%	6.02%	9.91%	3.34%

*National population will not equal sum of listed jurisdictions due to a small number of people counted in national population residing in some 'other' territories. Sum of state doses will not add to national total as some records are unable to be geocoded to a State or Territory.

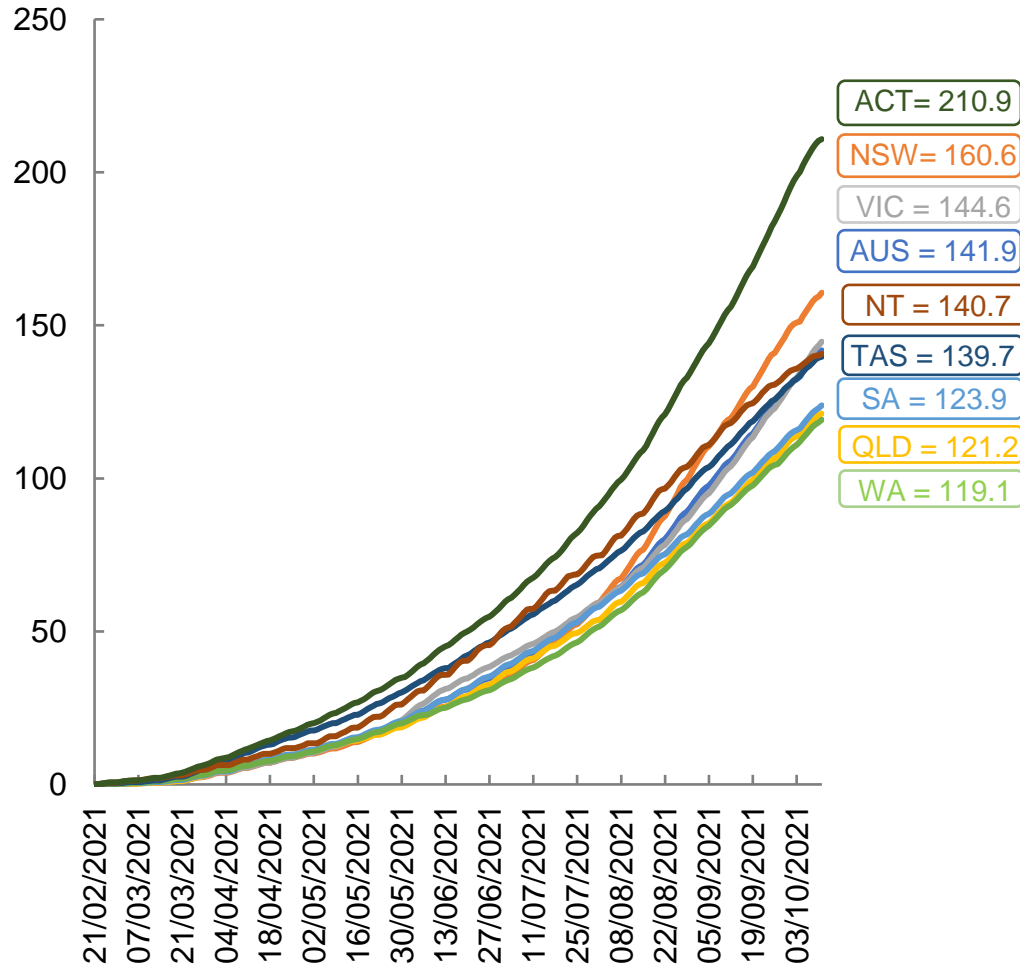
Doses sourced from Australian Immunisation Register, population from ABS ERP June 2020

Vaccinations by location

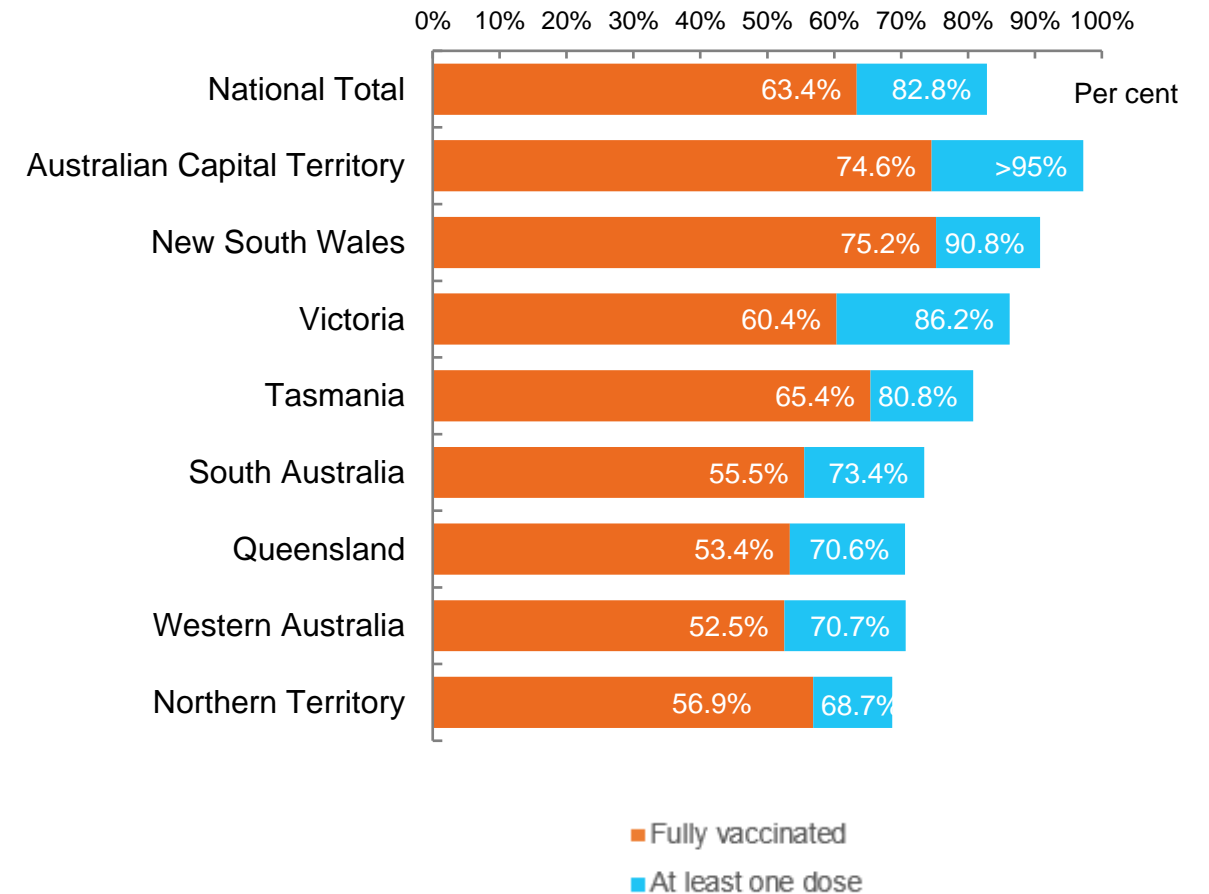
Data as at:
11 Oct 2021

Australia's COVID-19
Vaccine Roadmap

Cumulative total doses administered vs state populations*



First and Second Doses by state of residence



*Not an indication of percentage vaccinated, numbers will exceed 100 due to multiple doses required per person of the population

Aboriginal and Torres Strait Islander peoples

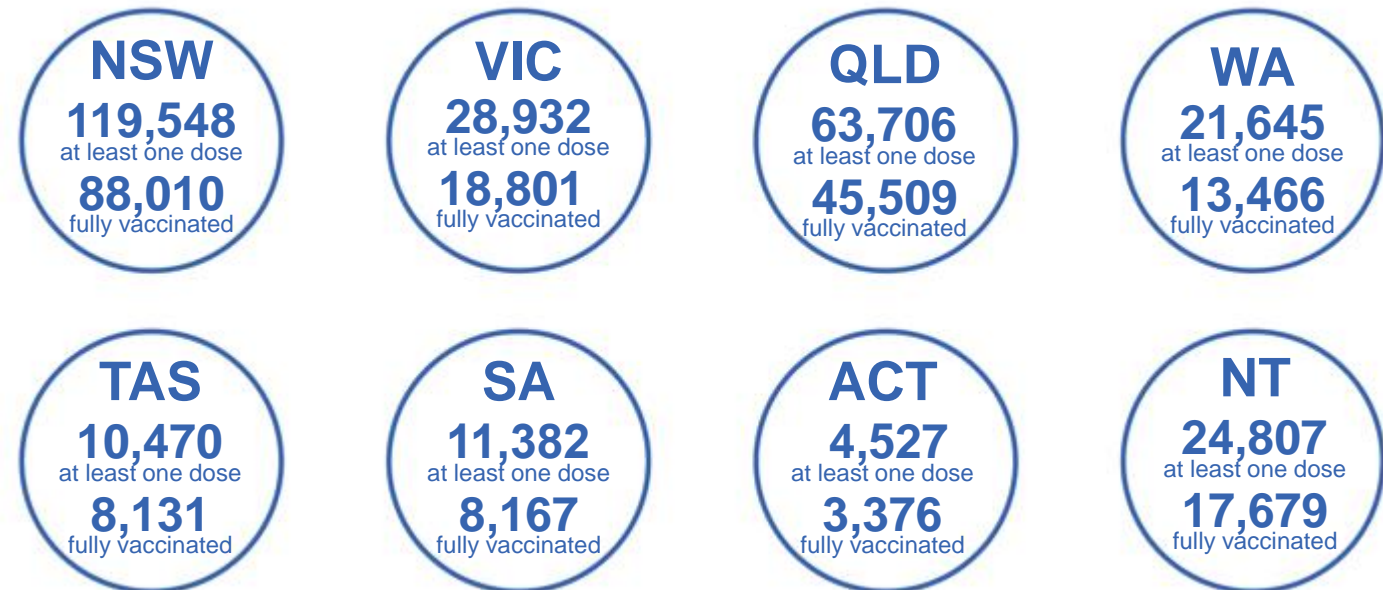
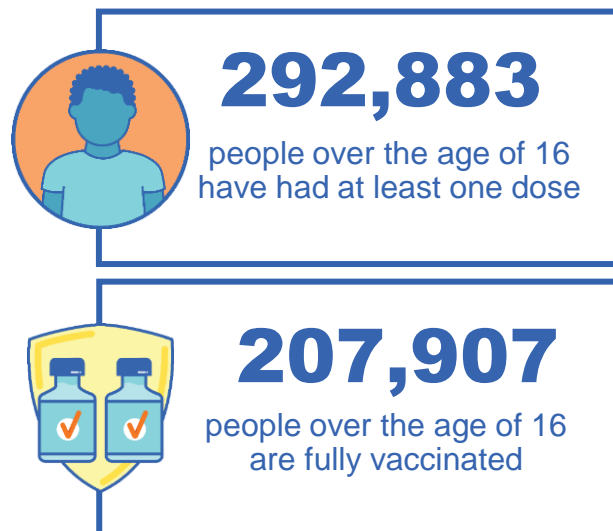
Number of people vaccinated

Data as at:
10 Oct 2021
Updated weekly

Australia's COVID-19
Vaccine Roadmap

167 Aboriginal community controlled health services (ACCHS)

0#	48	26	39	12	3	21	18
ACT	NSW	NT	QLD	SA	TAS	VIC	WA



7,866 people with at least one dose
4,768 people fully vaccinated

*Identifying as Aboriginal and Torres Strait Islander is optional and the estimated population may be under reported.

**Includes all Aboriginal and Torres Strait Islander peoples who have received a vaccination, not limited to those administered in an ACCHS setting

***Updated weekly.

#ACCHS in the ACT are currently operating as a Commonwealth Vaccine Clinics so not included to avoid double counting

residing in other territories or with missing residential information

Source: Australian Immunisation Register

Data as at:
11 Oct 2021

Commonwealth primary care



Primary care vaccine administration sites

5,543	137	169	3,349
GPs	CVCs	ACCHS	Pharmacies



16,989,562 total vaccine doses administered primary care settings as at 11 October
+ 208,312 recorded in the last 24 hours

Primary care vaccinations by provider type

	Doses administered	Daily increase	7 day increase
General Practice* includes other Commonwealth	15,862,799	171,358	1,068,914
Pharmacy	1,126,763	36,954	216,897



95,034 doses administered to persons residing in other territories or with missing residential information

*General practice includes Commonwealth Vaccination Clinics, Aboriginal Community Health Centres, Royal Flying Doctor Service and other Commonwealth vaccination facilities

Source: Australian Immunisation Register

Data as at:
11 Oct 2021

Commonwealth aged care and disability doses administered



1,062,008 (+ 5,181 last 24 hours)

Total vaccine doses administered in aged care and disability facilities as at 11 October

Number of doses administered as part of the Commonwealth aged and disability care rollout

NSW
493,545
(+1,947 daily increase)

VIC
189,246
(+287 daily increase)

QLD
195,366
(+2,636 daily increase)

WA
66,200
(+254 daily increase)

TAS
16,864
(+2 daily increase)

SA
58,256
(+28 daily increase)

ACT
12,514
(-2# daily increase)

NT
5,770
(+7 daily increase)

24,247

doses administered to persons residing in other territories or with missing residential information

*Sourced from the Australian Immunisation Register. Includes all persons vaccinated at participating residential aged care, disability and related industry settings.

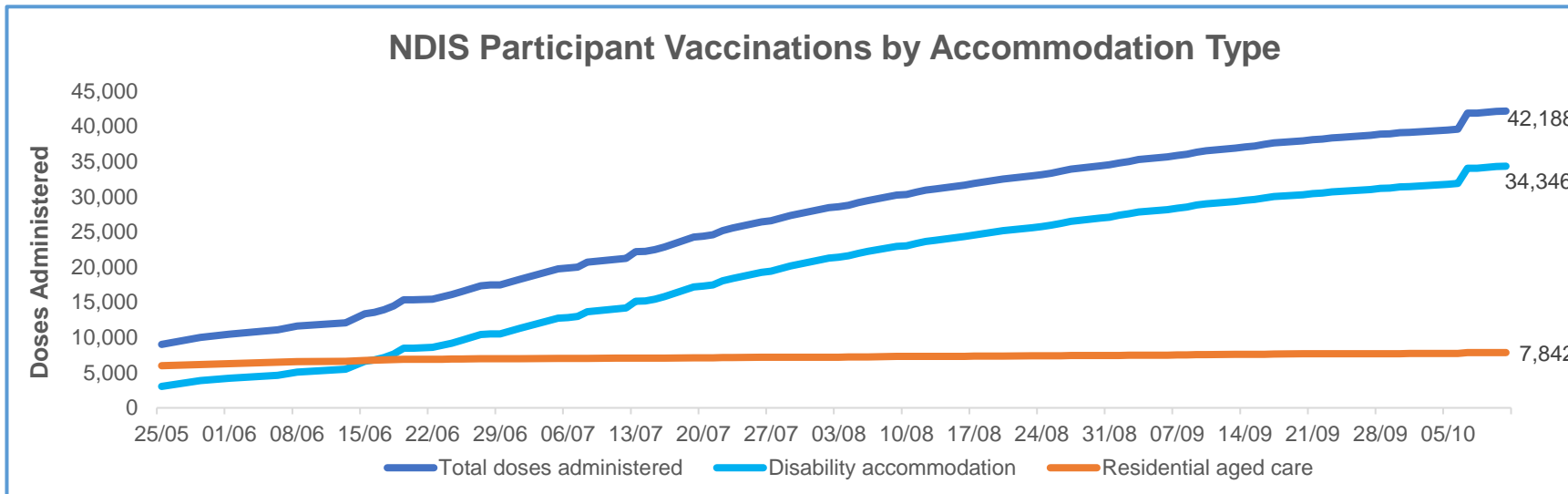
**State level breakdown indicates the residential location and may not align to the state in which the vaccination occurred.

#Numbers are calculated as difference in daily cumulative reported numbers to allow for historical corrections in all data sources. This can occasionally result in negative numbers, such as for ACT, where historical details about doses have been updated.

Data as at:
11 Oct 2021*

Vaccination rate of people with disability and the disability workforce

Phase 1a – People with disability living in shared accommodation



	Total people with at least one dose	People fully vaccinated	Total number of individuals in cohort	Total doses administered	% People with at least one dose	% People fully vaccinated
NDIS participants living in shared accommodation **	22,158	20,030	27,293	42,188	81.2%	73.4%
NDIS screened workers ***	167,086	142,298	211,265	309,384	79.1%	67.4%



* Updates are available Monday to Friday on participants, and bi-weekly for workers, numbers may be up to four days old.

** Shared accommodation means two or more people with disability living in shared residential accommodation and NDIS participants living in Residential Aged Care accommodation as per the eligibility criteria of Phase 1a.

*** Total number of workers within the NDIS Commission Worker Screening database who have ever been successfully screened and linked to an NDIS registered provider or participant.

Source: Linkage between National Disability Insurance Agency data, NDIS Quality and Safeguards Commission data and the Australian Immunisation Register.

Following ongoing work by Services Australia to improve data matching between Medicare, the Australian Immunisation Register and National Disability Insurance Agency records, improvements to data reporting have been applied from 7 October 2021. These have resulted in a one off increase in reported numbers to include participants who were previously not accurately data matched.

Residential aged care vaccination rollout

100%
Commonwealth facilities
visited (2,573 planned sites)

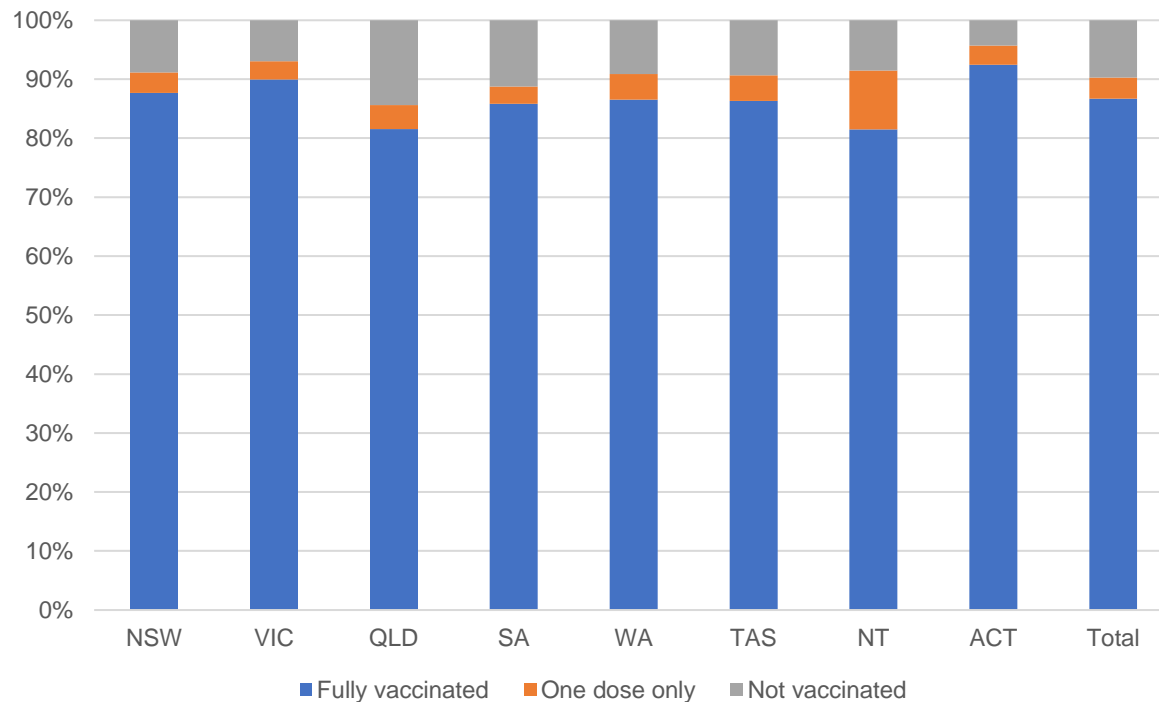
161,550
People fully vaccinated

90.3%
Participation rate

Australia's COVID-19
Vaccine Roadmap

Data as at:
11 Oct 2021

Aged care resident vaccinations



Aged care worker vaccinations

Jurisdictions	Total workers with at least one dose	Workers fully vaccinated	% Workers with at least one dose	% Workers fully vaccinated
NSW	78,877	69,711	99.8%	88.2%
VIC	71,386	62,472	99.7%	87.2%
QLD	47,652	39,440	99.9%	82.7%
SA	27,018	23,522	100.0%	87.0%
WA	23,346	18,593	99.5%	79.2%
TAS	7,586	6,498	100.0%	85.6%
NT	803	771	99.3%	95.3%
ACT	2,925	2,674	100.0%	91.4%
Total	259,593	223,681	99.8%	86.0%

Source: My Aged Care Portal staff vaccination progress

**Resident vaccination information is reported manually by service providers

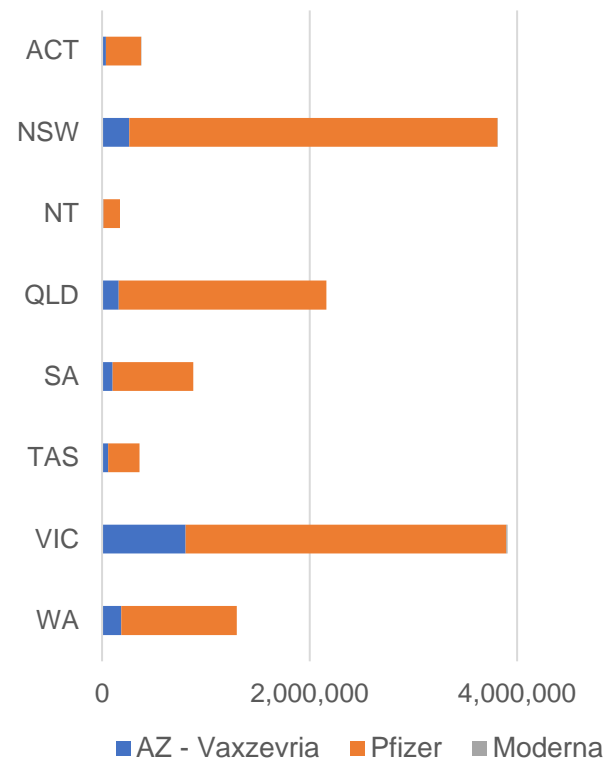
*Status updates are provided by facilities at least once per week. Reporting is updated Monday to Friday to encompass different facility updates being made on different days.

Data is sourced directly from Aged Care Service Providers and is not drawn or closely aligned with data from AIR due to inconsistencies and potential lags in uploading of records.

Data as at:
11 Oct 2021

Jurisdiction administered

Total vaccine doses administered in State and Territory clinics as at 11 October



12,968,912 total vaccine doses administered
in State and Territory clinics as at 11 October
+ 100,142 recorded in the last 24 hours
+ 732,703 recorded in the last 7 days

NSW
3,812,143
(+23,427 daily increase)

VIC
3,907,706
(+33,766 daily increase)

QLD
2,162,404
(+17,560 daily increase)

WA
1,298,043
(+10,908 daily increase)

TAS
361,134
(+1,775 daily increase)

SA
877,560
(+8,879 daily increase)

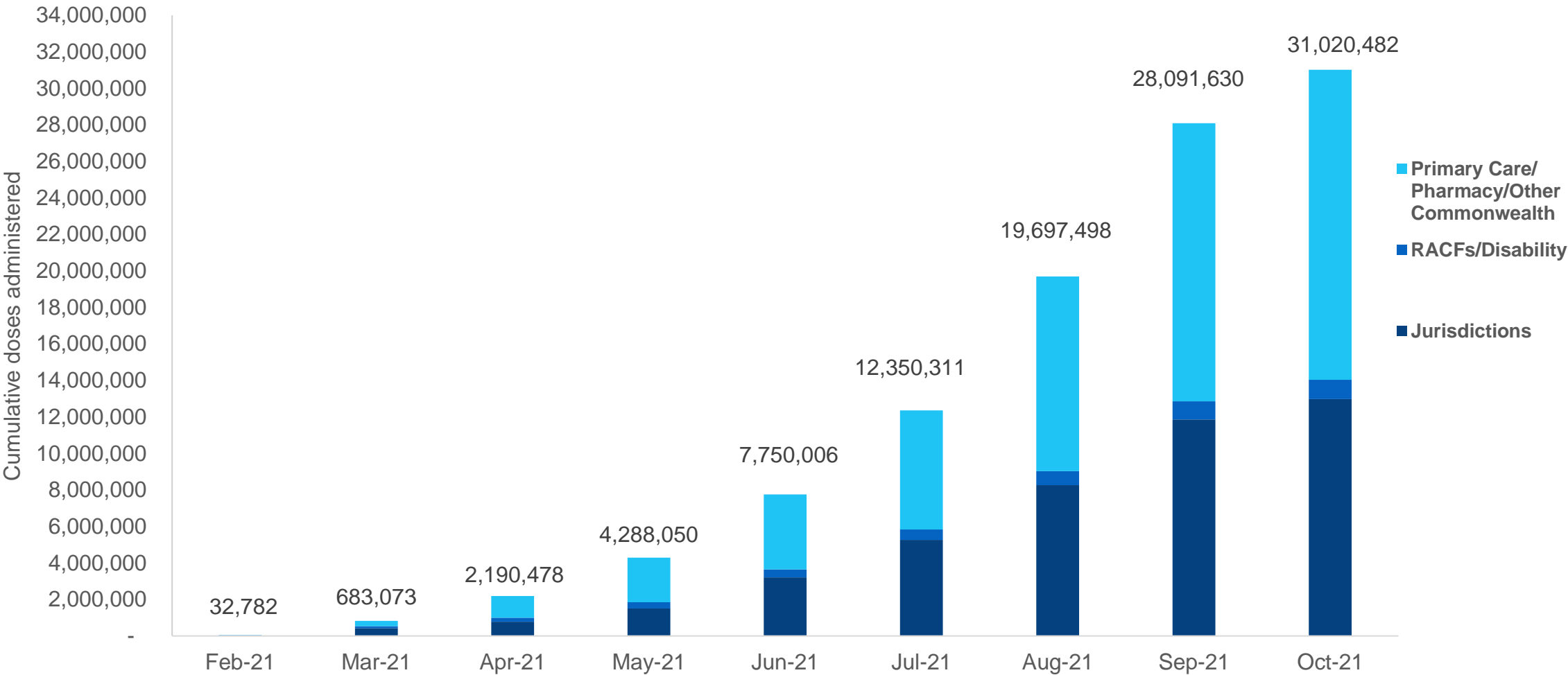
ACT
377,323
(+2,913 daily increase)

NT
172,599
(+914 daily increase)

*Sourced from the Australian Immunisation Register and self-reported data. Numbers are calculated as difference in daily cumulative reported numbers to allow for historical corrections in all self-reported data sources.

Cumulative doses administered by channel

Data as at:
11 Oct 2021



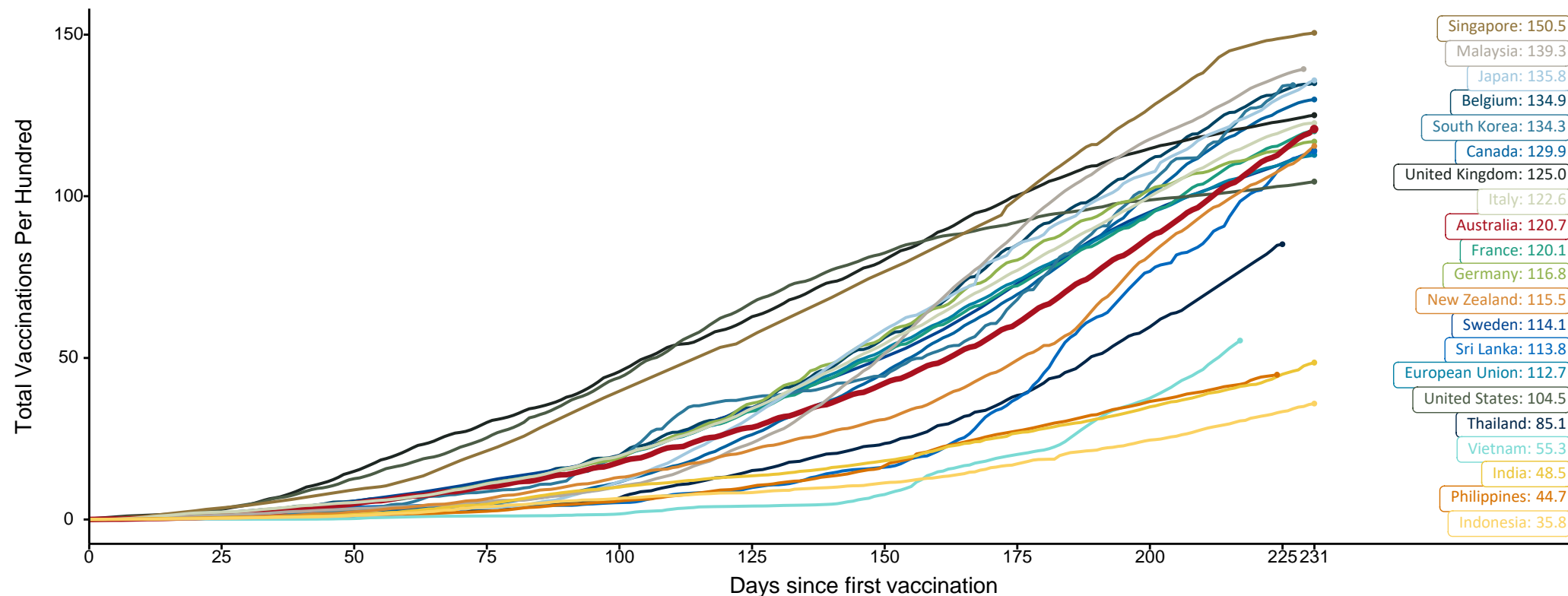
Source: Australian Immunisation Register

Doses at equivalent stages of rollout (Day 231)

Data as at:
11 Oct 2021

The x-axis is truncated at the length of Australia's vaccination program. Countries with intermittent reporting have had their doses per 100 imputed to Australia's current stage of rollout. Israel excluded as it is beyond scale of the graph

Cumulative doses administered (11 Oct): **31,020,482**

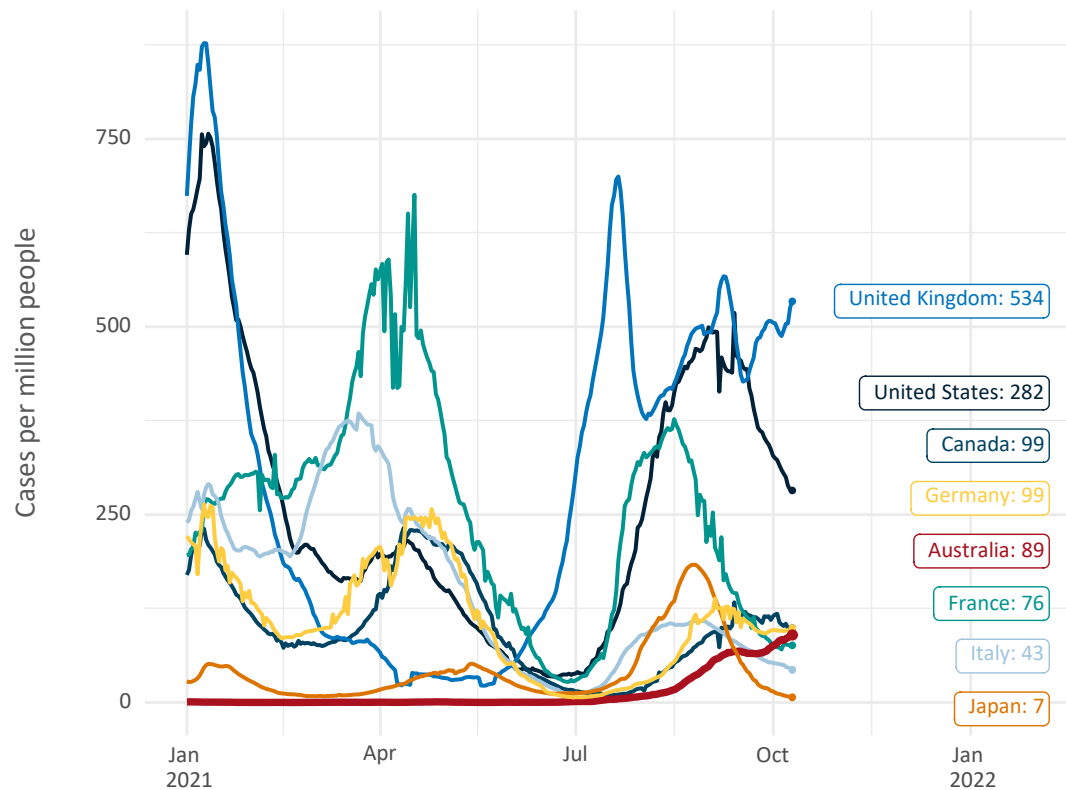


Note: From 15 September 2021, data for Australia includes all doses administered to people 12 and over. Prior to 15 September, data was for 16 and over
Source: Department of Health (Australia), Our World in Data (international)
Latest data: 11 October

International data – COVID-19

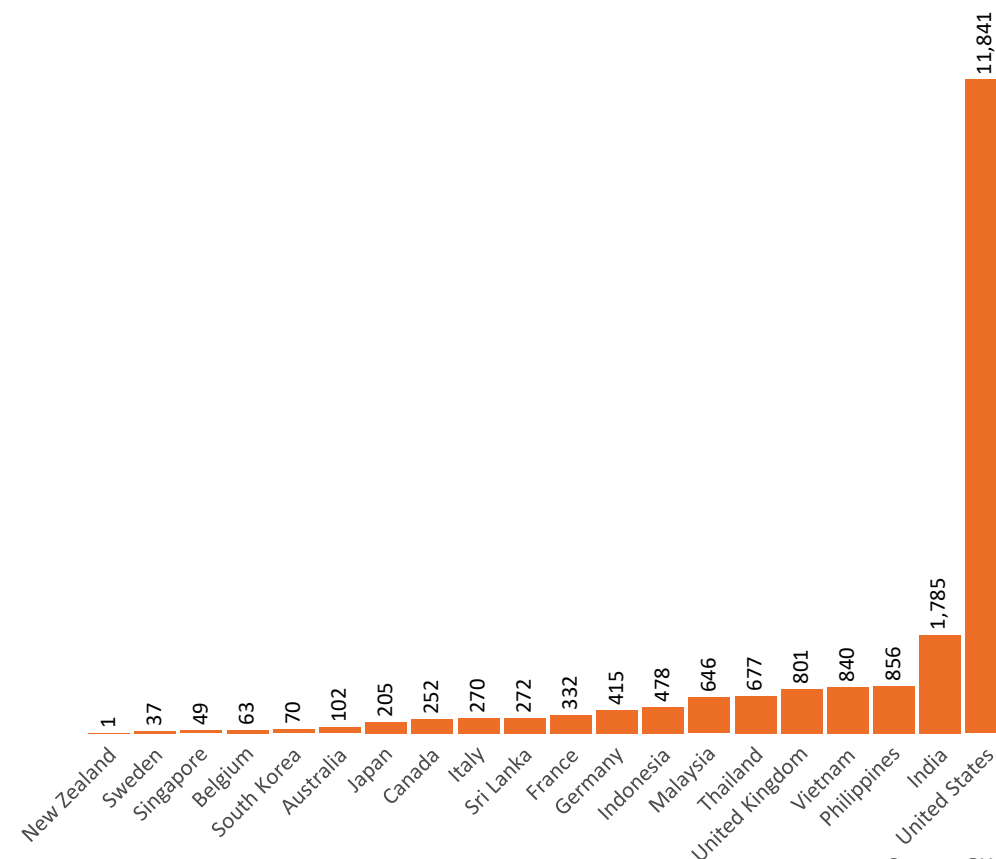
Data as at:
11 Oct 2021

New daily cases per million in 2021, Australia and G7 countries
Smoothed - 7 day average



Source: OWID
Data downloaded: 12 Oct 2021 08:31
Latest data: 10 Oct 2021

COVID-19 deaths in past 7 days - Australia and select countries

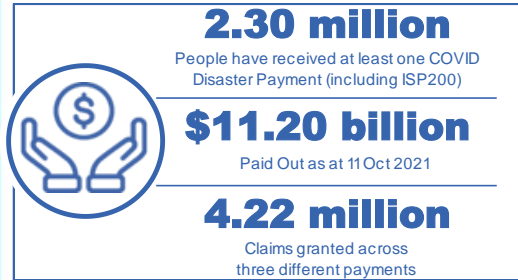


Source: OWID
Data downloaded: 12 Oct 2021 08:31
Latest data: 10 Oct 2021

Pandemic Response Payments

Australia's COVID-19
Vaccine Roadmap

Data as at midnight:
11 Oct 2021



COVID Disaster Payment:	4.12 million claims received - 2.12 million individuals paid a total of \$10.84 billion.
\$200 Income Support Payment:	257,000 claims received - 173,000 individuals paid a total of \$234.93 million.
Pandemic Leave Disaster Payment:	90,000 claims received - 78,000 individuals paid a total of \$124.91 million.



COVID Disaster Payment
assisting during a lockdown event in a Commonwealth hotspot.

Income Support Payment \$200
for income support recipients who lost at least 8 hours of work.

Pandemic Leave Disaster Payment
for those who have to self-isolate, quarantine or care.

For more information visit:
servicesaustralia.gov.au

COVID-19 DISASTER PAYMENTS

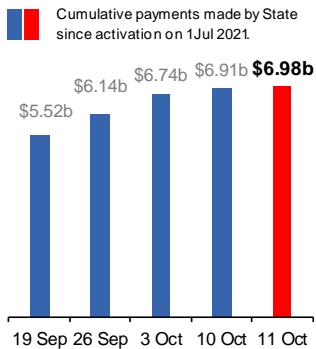
New South Wales

Active lockdown since 24 Jun

1.07m people have received at least one COVID Disaster Payment.

\$6.98b paid out as at 11 Oct 2021.

\$177m paid in initial and reoccurring payments in the week ending 10 Oct 2021.



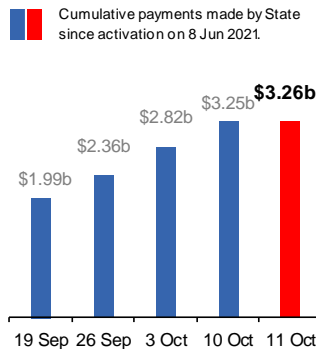
Victoria

Active lockdown (#6) since 6 Aug

705,000 people have received at least one COVID Disaster Payment.

\$3.26b paid out as at 11 Oct 2021.

\$428m paid in initial and reoccurring payments in the week ending 10 Oct 2021.



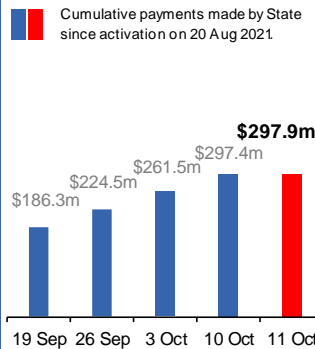
Australian Capital Territory

Active lockdown since 12 Aug

64,000 people have received at least one COVID Disaster Payment.

\$297.9m paid out as at 11 Oct 2021.

\$36m paid in initial and reoccurring payments in the week ending 10 Oct 2021.



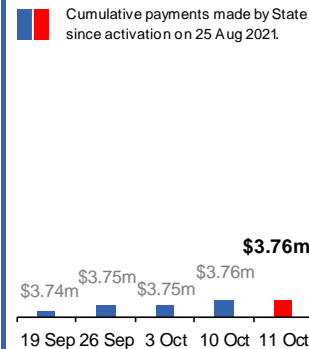
Northern Territory

Lockdown from 18 – 20 Jul
Claiming period ended 13 Sep

5,796 people have received at least one COVID Disaster Payment.

\$3.76m paid out as at 11 Oct 2021.

\$4,000 paid in initial and reoccurring payments in the week ending 10 Oct 2021.



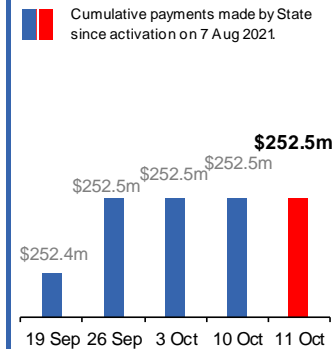
Queensland

Lockdown from 31 Jul – 11 Aug
Claiming period ended 28 Aug

196,000 people have received at least one COVID Disaster Payment.

\$252.5m paid out as at 11 Oct 2021.

\$19,000 paid in initial and reoccurring payments in the week ending 10 Oct 2021.



South Australia

Lockdown from 21 – 27 Jul
Claiming period ended 17 Aug

86,000 people have received at least one COVID Disaster Payment.

\$48.2m paid out as at 11 Oct 2021.

\$1,000 paid in initial and reoccurring payments in the week ending 10 Oct 2021.

