



**Australian Government**  
**Operation COVID Shield**

# COVID-19 Vaccine Rollout

11 October 2021

Data as at:  
10 Oct 2021

## Total vaccine doses



**30,706,847** total vaccine  
doses administered nationally as at 10 October  
**+166,090** recorded in the last 24 hours



**16,995,261**

people have had at least one  
dose

**82.4%**

of people over the age of 16  
have had at least one dose



**12,871,326**

people are fully vaccinated

**62.4%**

of people over the age of 16 are  
fully vaccinated

**NSW**  
**11,055,061**  
(+42,317 daily  
increase)

**VIC**  
**8,175,899**  
(+57,486 daily  
increase)

**QLD**  
**5,261,080**  
(+34,353 daily  
increase)

**WA**  
**2,652,724**  
(+13,906 daily  
increase)

**TAS**  
**647,591**  
(+3,783 daily  
increase)

**SA**  
**1,868,871**  
(+9,423 daily  
increase)

**ACT**  
**760,548**  
(+4,489 daily  
increase)

**NT**  
**285,073**  
(+333 daily  
increase)

\*Administration state breakdown indicates state in which a vaccine was administered

\*\*Overall dose count includes instances of more than two doses per person in a small number of cases.

Source: Australian Immunisation Register

Data as at:  
10 Oct 2021

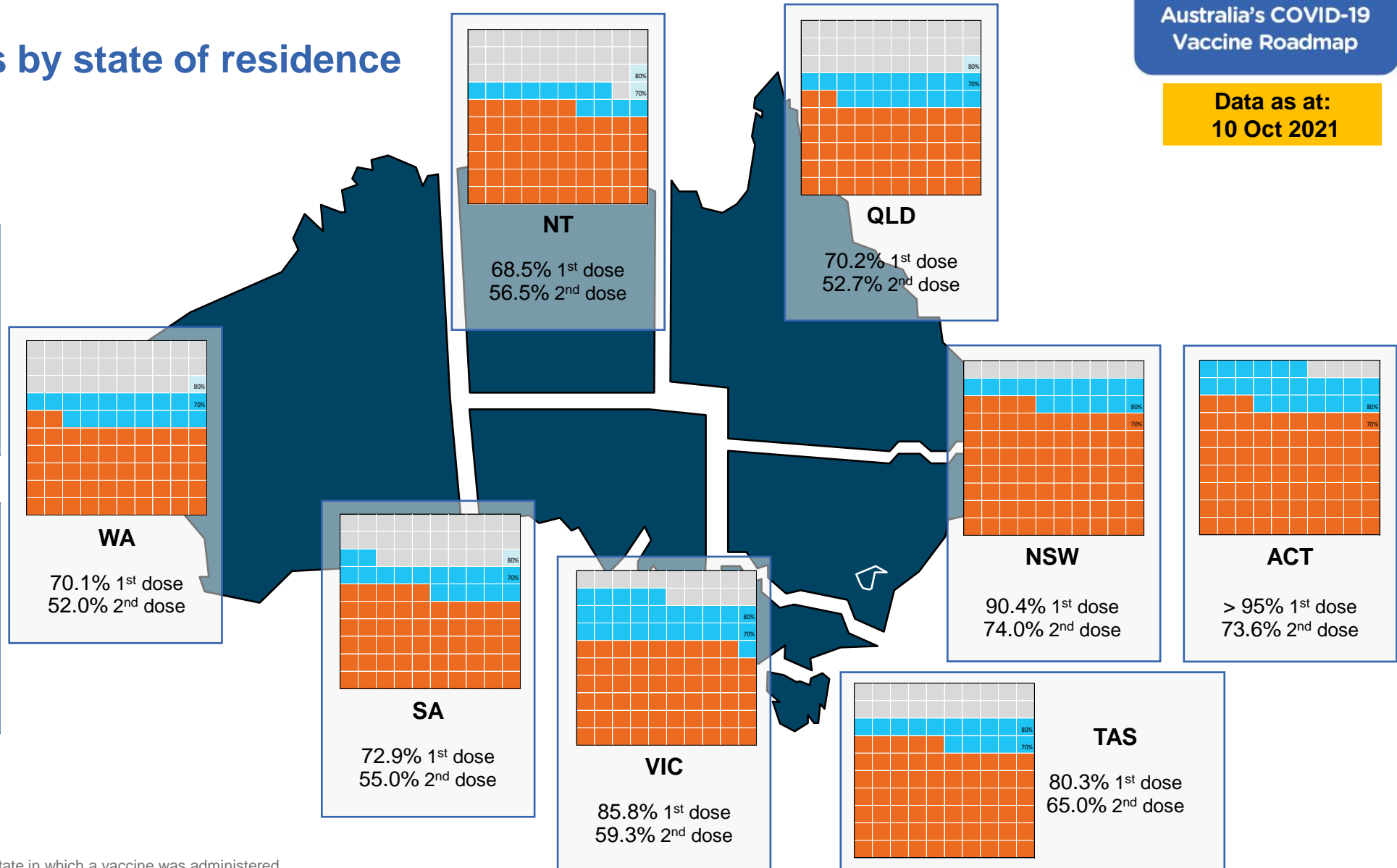
## Vaccinations by state of residence

### First doses

Age	Today	4 weeks ago	8 weeks ago
16+	82.4%	68.5%	48.9%
50+	91.7%	84.5%	73.1%
70+	>95%	91.7%	84.8%

### Fully vaccinated

Age	Today	4 weeks ago	8 weeks ago
16+	62.4%	43.2%	27.0%
50+	76.3%	62.5%	39.3%
70+	82.3%	71.7%	53.8%



\*Residential state may differ from the state in which a vaccine was administered

## Commonwealth and Jurisdiction vaccine doses administered

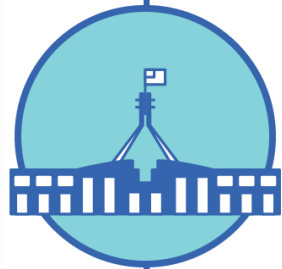
Data as at:  
10 Oct 2021



**30,706,847** total vaccine  
doses administered nationally as at 10 October  
**+ 166,090** recorded in the last 24 hours



**12,868,770**  
doses administered by state  
and territory facilities  
**+ 95,854**  
recorded in the last 24 hours



**17,838,077**  
doses administered by  
commonwealth facilities  
**+ 70,236**  
recorded in the last 24 hours  
**16,781,250** total vaccine doses  
administered in primary care settings  
**1,056,827** total vaccine doses  
administered in aged care and disability  
settings

NSW	Jurisdictions	Commonwealth
Cumulative	3,788,716	7,266,345
Daily increase	17,519	24,798

VIC	Jurisdictions	Commonwealth
Cumulative	3,873,940	4,301,959
Daily increase	34,716	22,770

QLD	Jurisdictions	Commonwealth
Cumulative	2,144,844	3,116,236
Daily increase	22,281	12,072

WA	Jurisdictions	Commonwealth
Cumulative	1,287,135	1,365,589
Daily increase	8,190	5,716

TAS	Jurisdictions	Commonwealth
Cumulative	359,359	288,232
Daily increase	3,084	699

SA	Jurisdictions	Commonwealth
Cumulative	868,681	1,000,190
Daily increase	6,756	2,667

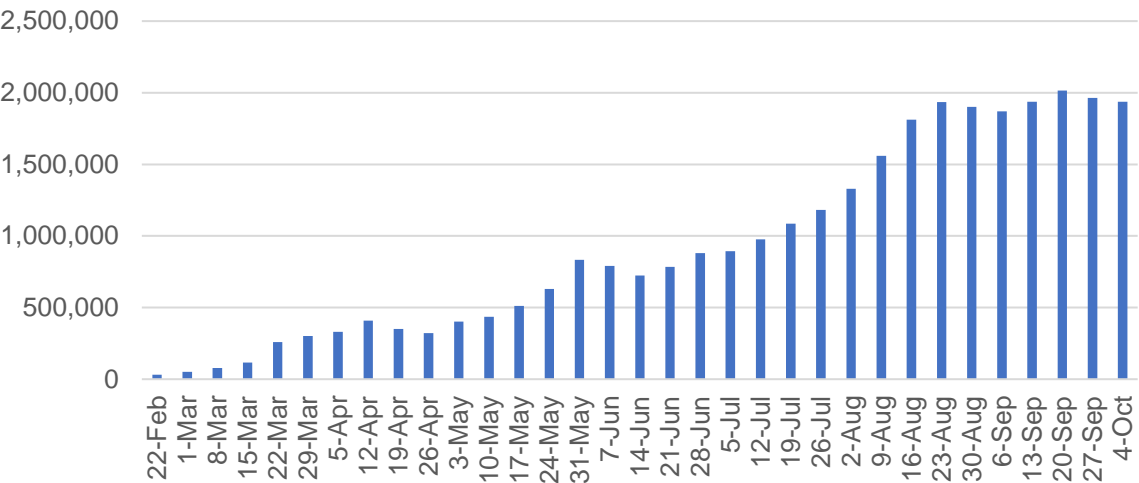
ACT	Jurisdictions	Commonwealth
Cumulative	374,410	386,138
Daily increase	2,989	1,500

NT	Jurisdictions	Commonwealth
Cumulative	171,685	113,388
Daily increase	319	14

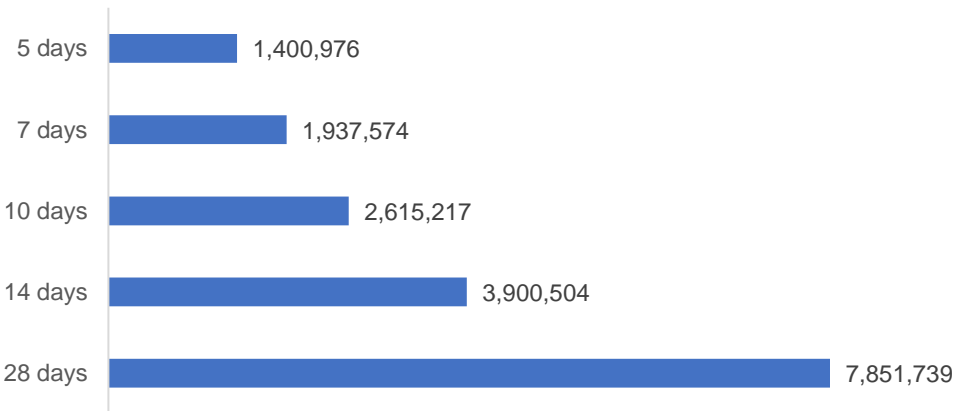
# Vaccine milestone charts

Data as at:  
10 Oct 2021

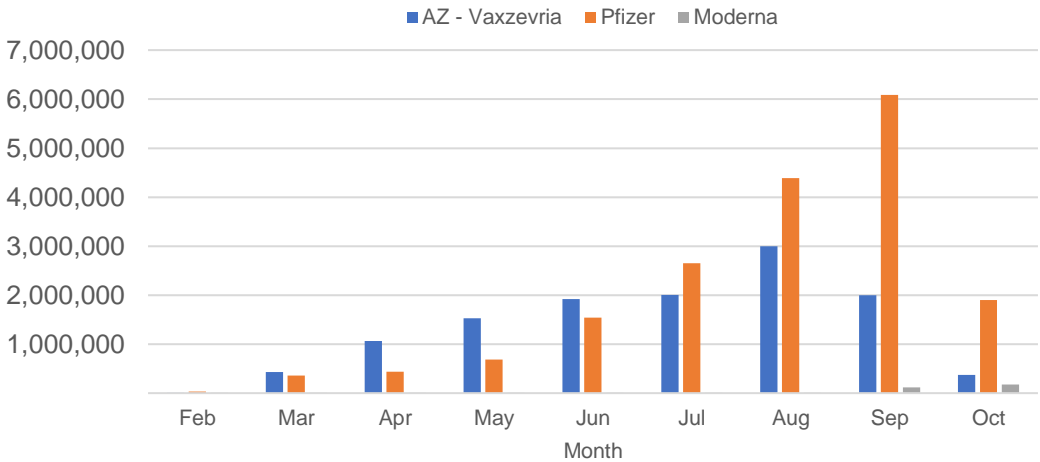
Jabs in arms by week



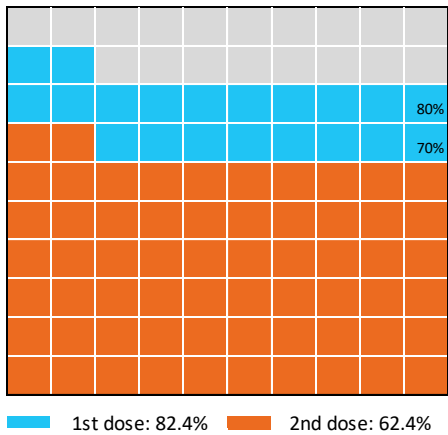
Doses reported



Doses by administration month and vaccine type



Eligible population percentage coverage



\*Each square represents 1% of the national population. Squares are filled as milestones are achieved.

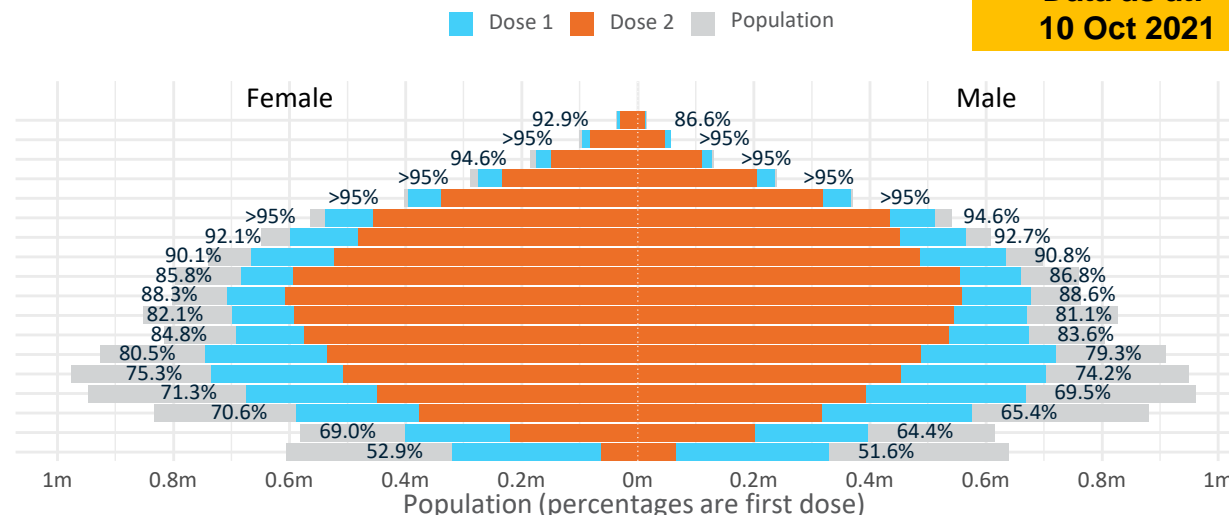
\*Sourced from the Australian Immunisation Register.

Data as at:  
10 Oct 2021

# Doses by age and sex

First and second doses by age and sex

Age	Dose 1	Dose 2
95+	48,277 (91.2%)	40,731 (77.0%)
90-94	152,135 (>95%)	129,318 (81.6%)
85-89	303,417 (>95%)	257,849 (81.5%)
80-84	511,405 (>95%)	438,842 (83.0%)
75-79	763,798 (>95%)	658,422 (85.1%)
70-74	1,051,070 (>95%)	890,276 (80.6%)
65-69	1,163,491 (92.5%)	933,266 (74.2%)
60-64	1,301,333 (90.6%)	1,009,510 (70.3%)
55-59	1,343,876 (86.4%)	1,149,697 (73.9%)
50-54	1,385,010 (88.5%)	1,166,887 (74.6%)
45-49	1,369,390 (81.7%)	1,135,158 (67.7%)
40-44	1,366,665 (84.4%)	1,110,456 (68.5%)
35-39	1,470,917 (80.2%)	1,023,633 (55.8%)
30-34	1,444,940 (75.1%)	964,518 (50.1%)
25-29	1,352,288 (70.9%)	847,698 (44.5%)
20-24	1,169,557 (68.3%)	695,074 (40.6%)
16-19	797,692 (66.7%)	419,991 (35.1%)
12-15	649,489 (52.2%)	126,960 (10.2%)



	AUS	ACT	NSW	NT	QLD	SA	TAS	VIC	WA
16 and over - dose 1	16,995,261	333,508	5,938,082	130,492	2,887,560	1,049,980	353,652	4,638,669	1,483,118
16 and over - dose 2	12,871,326	253,134	4,856,736	107,664	2,167,251	791,787	286,107	3,206,803	1,100,369
16 and over - population	20,619,959*	344,037	6,565,651	190,571	4,112,707	1,440,400	440,172	5,407,574	2,114,978
16 and over % with dose 1	82.42%	>95%	90.44%	68.47%	70.21%	72.90%	80.34%	85.78%	70.12%
16 and over % with dose 2	62.42%	73.58%	73.97%	56.50%	52.70%	54.97%	65.00%	59.30%	52.03%
50 and over - dose 1	8,023,812	131,249	2,690,315	49,041	1,507,942	583,211	197,905	2,054,949	759,785
50 and over - dose 2	6,674,798	116,386	2,331,204	42,034	1,223,723	463,586	168,509	1,690,602	604,382
50 and over - population	8,749,703	127,802	2,807,793	62,280	1,758,855	674,384	220,036	2,211,211	885,370
50 and over % with dose 1	91.70%	>95%	>95%	78.74%	85.73%	86.48%	89.94%	92.93%	85.82%
50 and over % with dose 2	76.29%	91.07%	83.03%	67.49%	69.57%	68.74%	76.58%	76.46%	68.26%
70 and over - dose 1	2,830,102	42,626	949,484	10,509	537,864	224,596	73,990	710,765	260,332
70 and over - dose 2	2,415,438	38,247	836,570	9,012	456,024	182,209	63,593	601,911	212,510
70 and over - population	2,934,706	39,946	962,606	12,343	577,767	240,514	77,155	743,519	280,281
70 and over % with dose 1	>95%	>95%	>95%	85.14%	93.09%	93.38%	>95%	>95%	92.88%
70 and over % with dose 2	82.31%	>95%	86.91%	73.01%	78.93%	75.76%	82.42%	80.95%	75.82%
12 to 15 - dose 1	649,489	17,262	267,047	4,581	90,865	22,599	7,424	199,330	36,471
12 to 15 - dose 2	126,960	2,256	68,899	2,289	18,236	3,243	1,436	26,005	3,930
12 to 15 - population	1,243,990	19,693	390,330	13,060	270,146	82,747	26,308	308,611	132,869
12 to 15 % with dose 1	52.21%	87.66%	68.42%	35.08%	33.64%	27.31%	28.22%	64.59%	27.45%
12 to 15 % with dose 2	10.21%	11.46%	17.65%	17.53%	6.75%	3.92%	5.46%	8.43%	2.96%

\*National population will not equal sum of listed jurisdictions due to a small number of people counted in national population residing in some 'other' territories. Sum of state doses will not add to national total as some records are unable to be geocoded to a State or Territory.

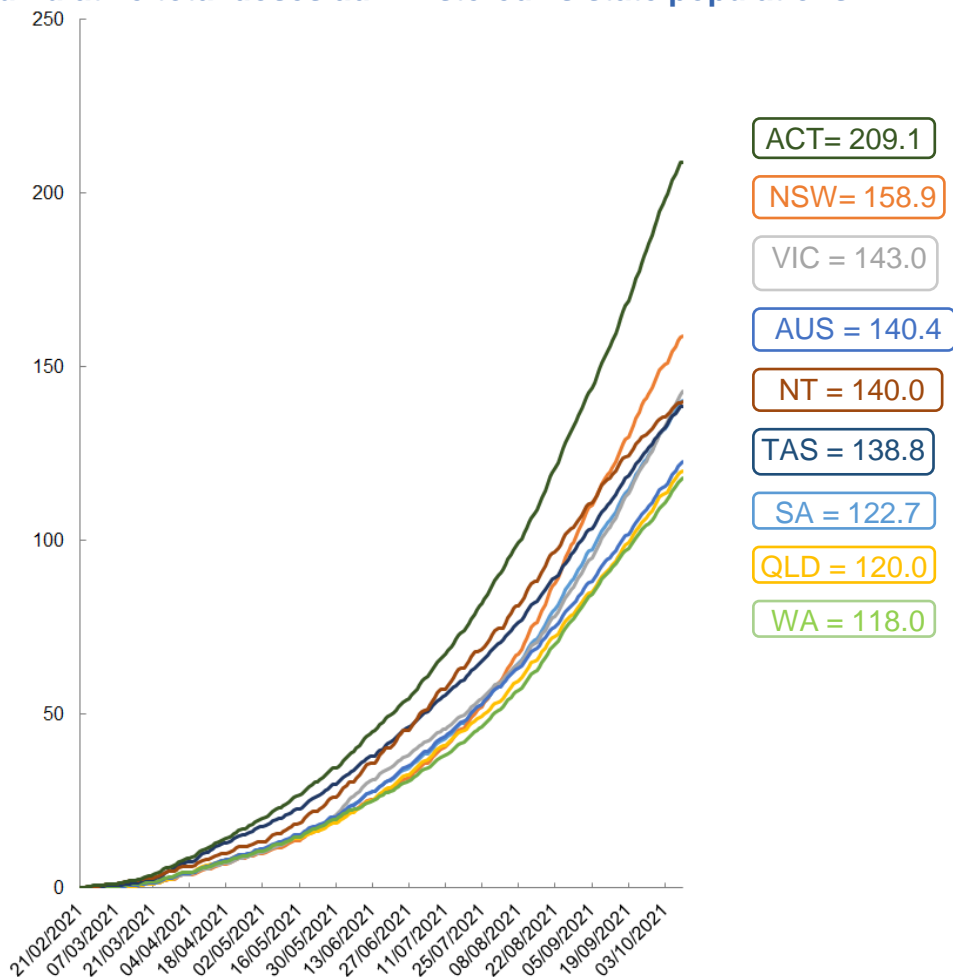
Doses sourced from Australian Immunisation Register, population from ABS ERP June 2020

# Vaccinations by location

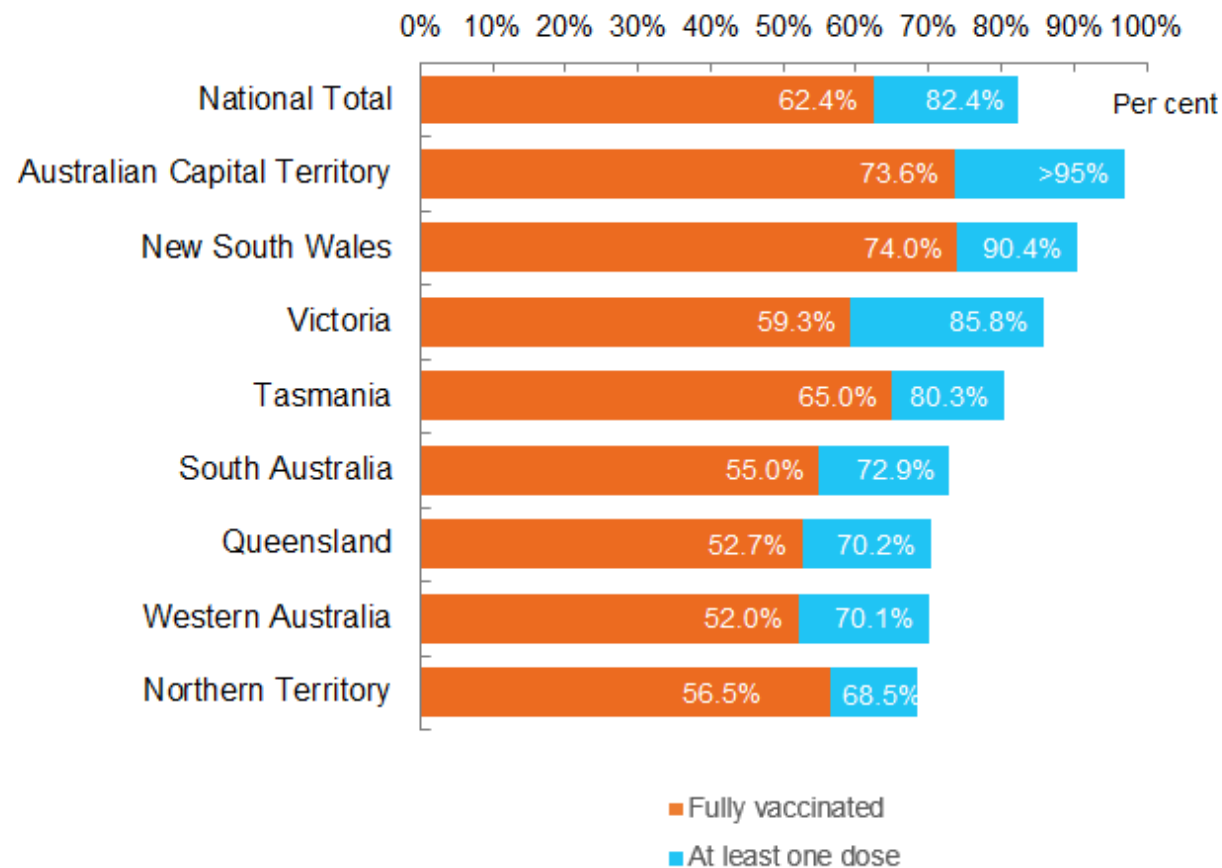
Data as at:  
10 Oct 2021

Australia's COVID-19  
Vaccine Roadmap

Cumulative total doses administered vs state populations\*\*



First and Second Doses by state of residence



\*Not an indication of percentage vaccinated, numbers will exceed 100 due to multiple doses required per person of the population

# State populations adjusted to include 12-15 year olds



# Aboriginal and Torres Strait Islander peoples

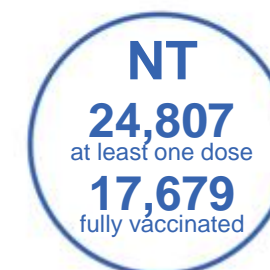
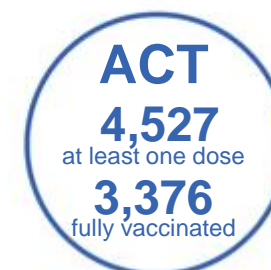
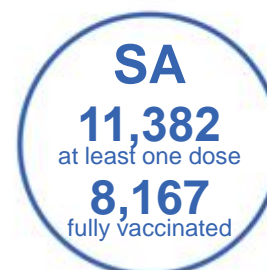
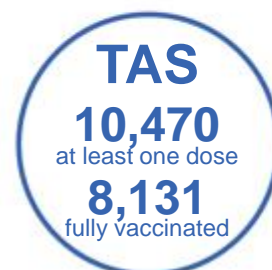
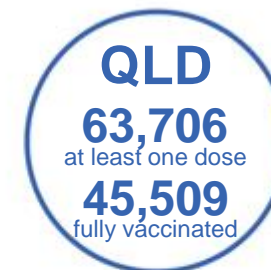
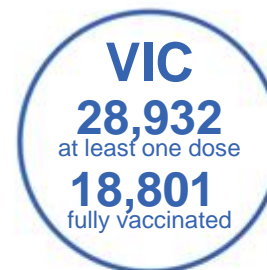
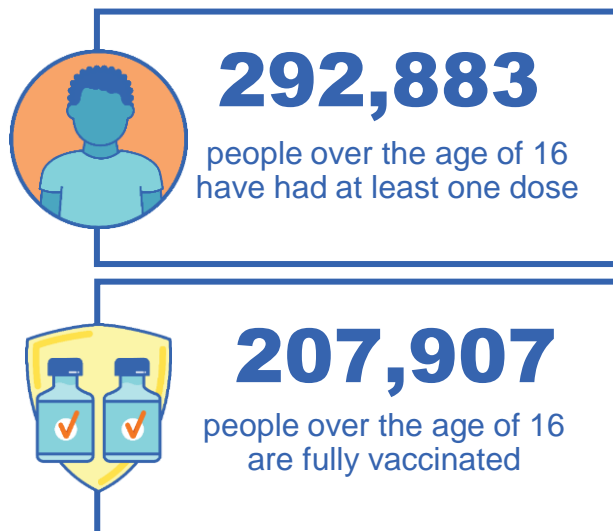
## Number of people vaccinated

Data as at:  
10 Oct 2021  
Updated weekly

Australia's COVID-19  
Vaccine Roadmap

### 167 Aboriginal community controlled health services (ACCHS)

0#	48	26	39	12	3	21	18
ACT	NSW	NT	QLD	SA	TAS	VIC	WA



**7,866** people with at least one dose  
**4,768** people fully vaccinated

residing in other territories or with missing residential information

Source: Australian Immunisation Register

\*Identifying as Aboriginal and Torres Strait Islander is optional and the estimated population may be under reported.

\*\*Includes all Aboriginal and Torres Strait Islander peoples who have received a vaccination, not limited to those administered in an ACCHS setting

\*\*\*Updated weekly.

#ACCHS in the ACT are currently operating as a Commonwealth Vaccine Clinics so not included to avoid double counting



Data as at:  
10 Oct 2021

# Commonwealth primary care



## Primary care vaccine administration sites

<b>5,529</b>	<b>137</b>	<b>167</b>	<b>3,329</b>
GPs	CVCs	ACCHS	Pharmacies



**16,781,250** total vaccine doses administered primary care settings as at 10 October  
**+ 65,366** recorded in the last 24 hours

## Primary care vaccinations by provider type

	Doses administered	Daily increase	7 day increase
General Practice* includes other Commonwealth	15,691,441	59,634	976,898
Pharmacy	1,089,809	5,732	199,233



**94,090** doses administered to persons residing in other territories or with missing residential information

\*General practice includes Commonwealth Vaccination Clinics, Aboriginal Community Health Centres, Royal Flying Doctor Service and other Commonwealth vaccination facilities

Source: Australian Immunisation Register

Data as at:  
10 Oct 2021

# Commonwealth aged care and disability doses administered



**1,056,827** (+ 4,870 last 24 hours)

Total vaccine doses administered in aged care and disability facilities as at 10 October

Number of doses administered as part of the Commonwealth aged and disability care rollout

**NSW**  
**491,598**  
(+474 daily increase)

**VIC**  
**188,959**  
(+420 daily increase)

**QLD**  
**192,730**  
(+3,314 daily increase)

**WA**  
**65,946**  
(+501 daily increase)

**TAS**  
**16,862**  
(+7 daily increase)

**SA**  
**58,228**  
(+61 daily increase)

**ACT**  
**12,516**  
(+61 daily increase)

**NT**  
**5,763**  
(+20 daily increase)

\*Sourced from the Australian Immunisation Register. Includes all persons vaccinated at participating residential aged care, disability and related industry settings.

\*\*State level breakdown indicates the residential location and may not align to the state in which the vaccination occurred.

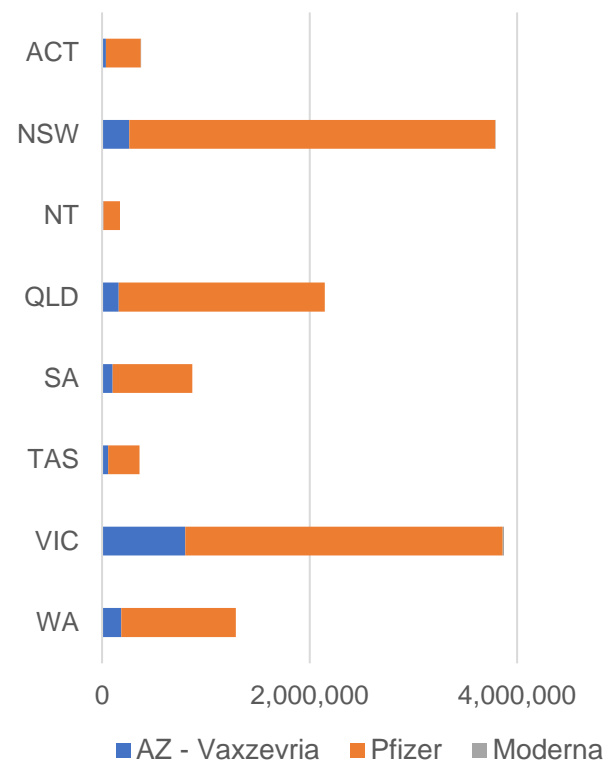
**24,225**

doses administered to persons residing in other territories or with missing residential information

Data as at:  
10 Oct 2021

# Jurisdiction administered

Total vaccine doses administered in State and Territory clinics as at 10 October



**12,868,770** total vaccine doses administered  
in State and Territory clinics as at 10 October  
**+ 95,854** recorded in the last 24 hours  
**+ 717,311** recorded in the last 7 days

**NSW**  
**3,788,716**  
(+17,519 daily increase)

**VIC**  
**3,873,940**  
(+34,716 daily increase)

**QLD**  
**2,144,844**  
(+22,281 daily increase)

**WA**  
**1,287,135**  
(+8,190 daily increase)

**TAS**  
**359,359**  
(+3,084 daily increase)

**SA**  
**868,681**  
(+6,756 daily increase)

**ACT**  
**374,410**  
(+2,989 daily increase)

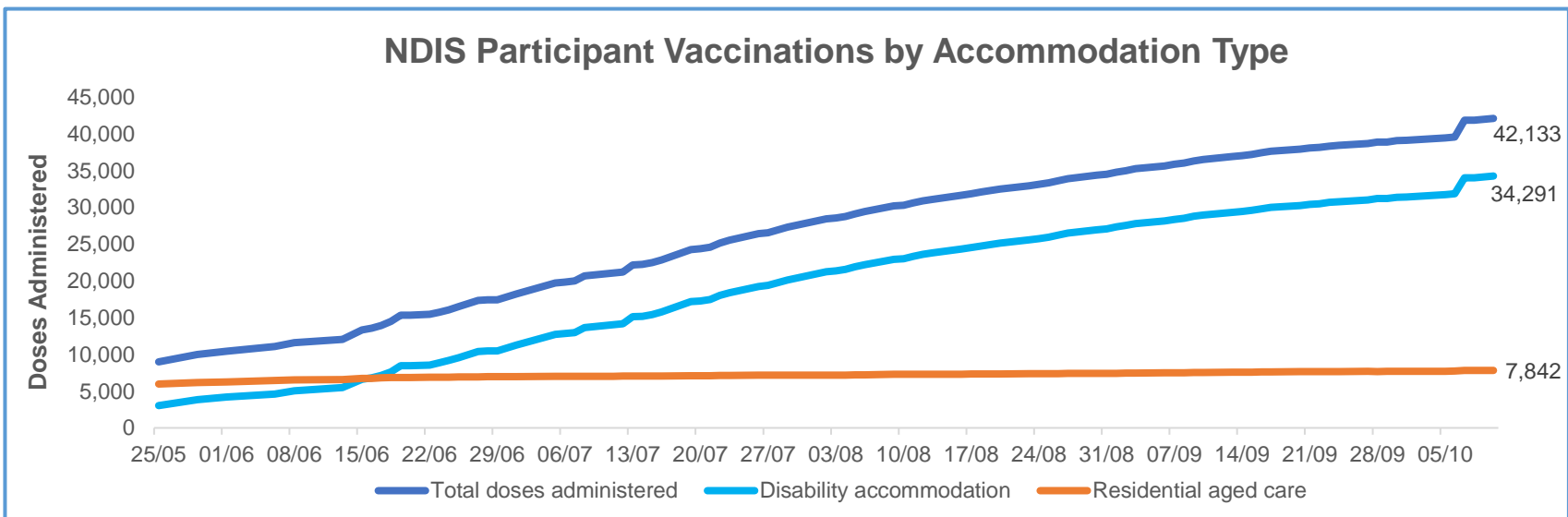
**NT**  
**171,685**  
(+319 daily increase)

\*Sourced from the Australian Immunisation Register and self-reported data. Numbers are calculated as difference in daily cumulative reported numbers to allow for historical corrections in all self-reported data sources.

Data as at:  
10 Oct 2021\*

# Vaccination rate of people with disability and the disability workforce

## Phase 1a – People with disability living in shared accommodation



	Total people with at least one dose	People fully vaccinated	Total number of individuals in cohort	Total doses administered	% People with at least one dose	% People fully vaccinated
NDIS participants living in shared accommodation **	22,131	20,002	27,293	42,133	81.1%	73.3%
NDIS screened workers ***	160,989	134,518	206,065	295,507	78.1%	65.3%



\* Updates are available Monday to Friday on participants, and bi-weekly for workers, numbers may be up to four days old.

\*\* Shared accommodation means two or more people with disability living in shared residential accommodation and NDIS participants living in Residential Aged Care accommodation as per the eligibility criteria of Phase 1a.

\*\*\* Total number of workers within the NDIS Commission Worker Screening database who have ever been successfully screened and linked to an NDIS registered provider or participant.

Source: Linkage between National Disability Insurance Agency data, NDIS Quality and Safeguards Commission data and the Australian Immunisation Register.

Following ongoing work by Services Australia to improve data matching between Medicare, the Australian Immunisation Register and National Disability Insurance Agency records, improvements to data reporting have been applied from 7 October 2021. These have resulted in a one off increase in reported numbers to include participants who were previously not accurately data matched.

## Residential aged care vaccination rollout

### Residential aged care facilities status

**100%** Commonwealth facilities visited (2,573 planned sites)

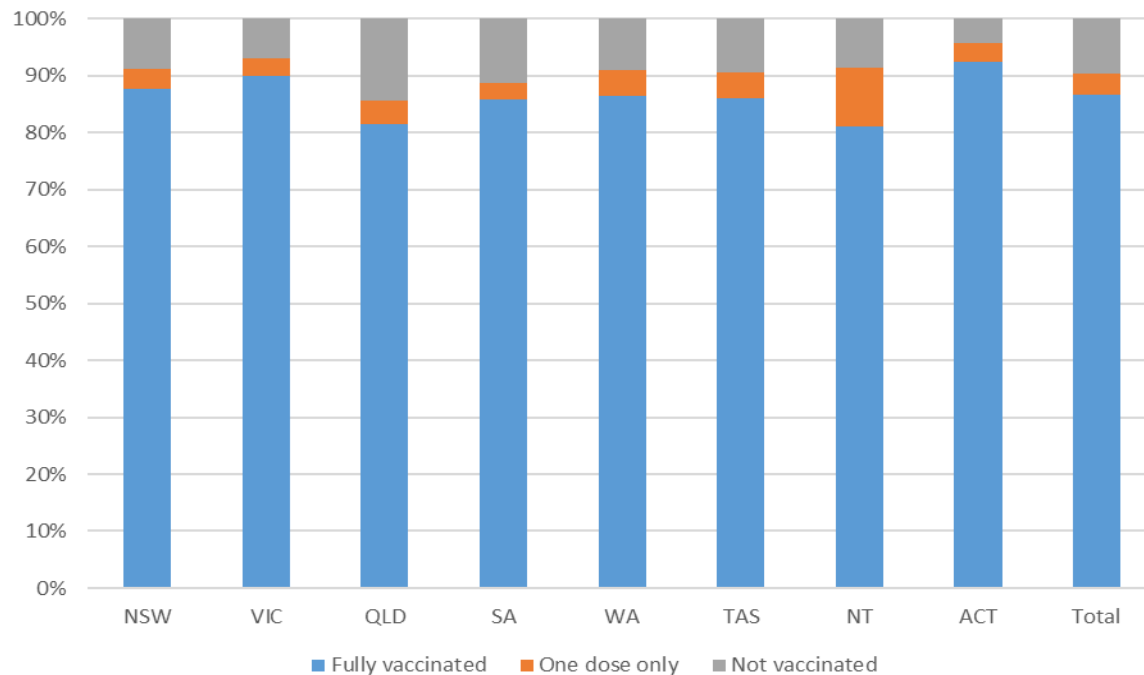
**161,488** People fully vaccinated

**90.3%** Participation rate

Australia's COVID-19 Vaccine Roadmap

Data as at:  
10 Oct 2021

### Aged care resident vaccinations



### Aged care worker vaccinations

Jurisdictions	Total workers with at least one dose	Workers fully vaccinated	% Workers with at least one dose	% Workers fully vaccinated
NSW	78,758	69,634	99.8%	88.2%
VIC	71,370	62,358	99.6%	87.1%
QLD	47,642	39,364	99.9%	82.5%
SA	27,009	23,484	100.0%	86.9%
WA	23,311	18,563	99.6%	79.3%
TAS	7,588	6,498	100.0%	85.6%
NT	803	771	99.3%	95.3%
ACT	2,926	2,675	100.0%	91.4%
Total	259,407	223,347	99.8%	85.9%

Source: My Aged Care Portal staff vaccination progress

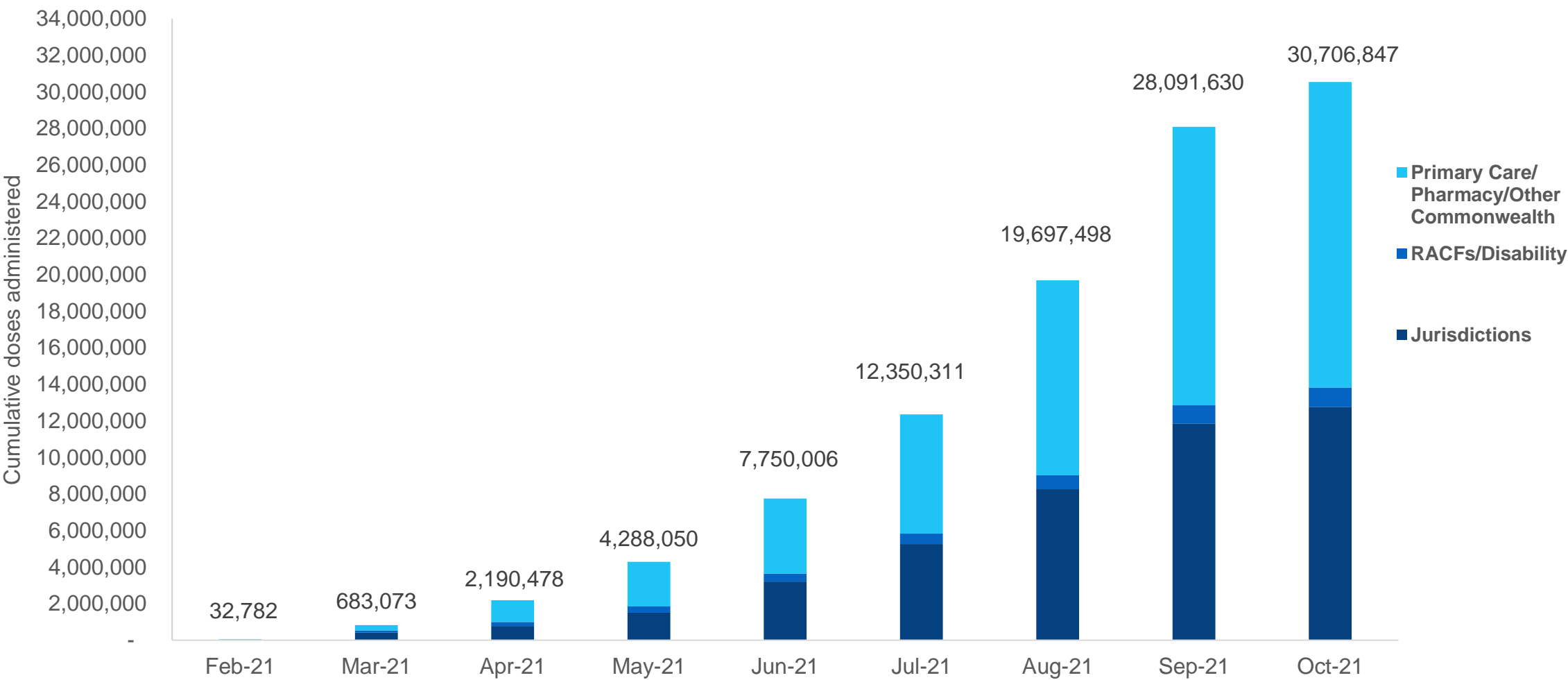
\*\*Resident vaccination information is reported manually by service providers

\*Status updates are provided by facilities at least once per week. Reporting is updated Monday to Friday to encompass different facility updates being made on different days.

Data is sourced directly from Aged Care Service Providers and is not drawn or closely aligned with data from AIR due to inconsistencies and potential lags in uploading of records.

# Cumulative doses administered by channel

Data as at:  
10 Oct 2021



Source: Australian Immunisation Register

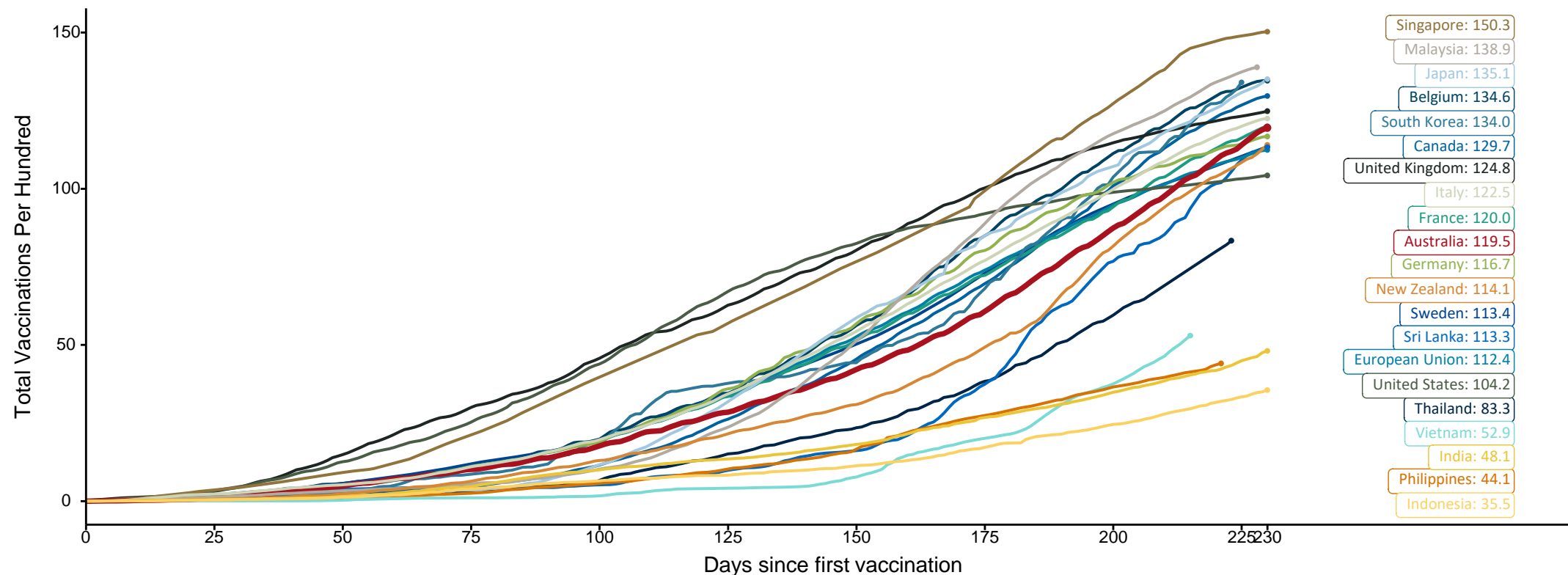


# Doses at equivalent stages of rollout (Day 230)

Data as at:  
10 Oct 2021

The x-axis is truncated at the length of Australia's vaccination program. Countries with intermittent reporting have had their doses per 100 imputed to Australia's current stage of rollout. Israel excluded as it is beyond scale of the graph.

Cumulative doses administered (10 Oct): **30,706,847**



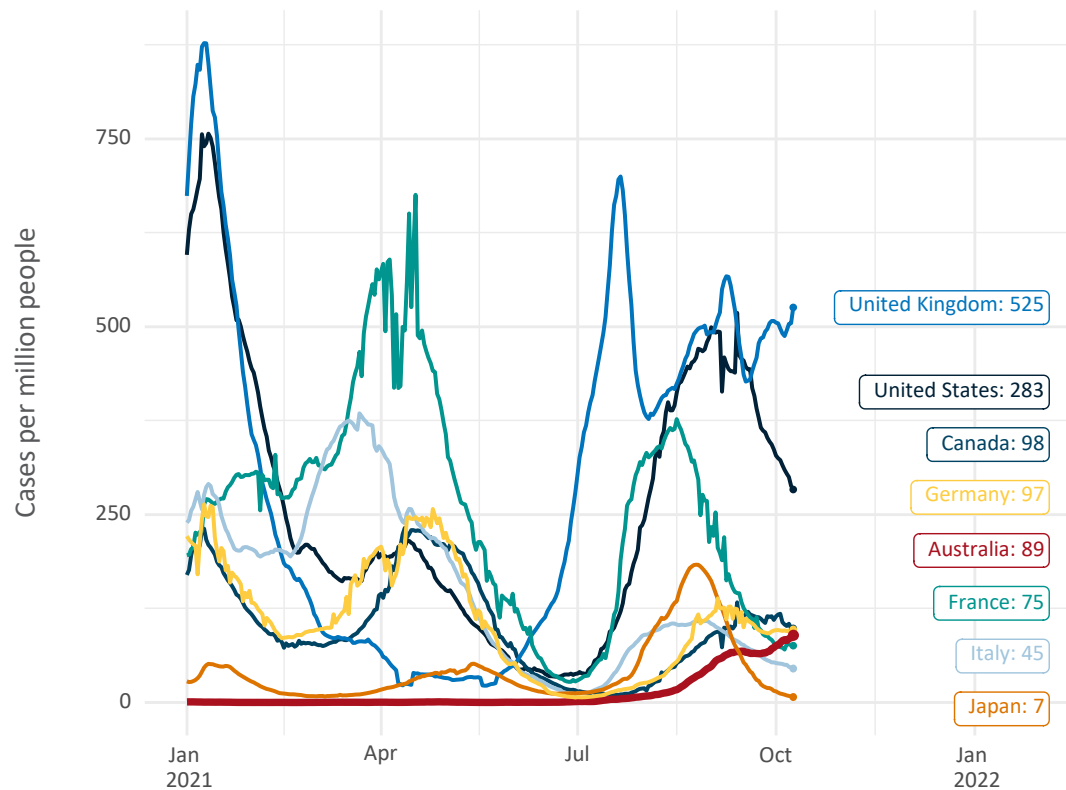
Note: From 15 September 2021, data for Australia includes all doses administered to people 12 and over. Prior to 15 September, data was for 16 and over  
Source: Department of Health (Australia), Our World in Data (international)  
Latest data: 10 October



# International data – COVID-19

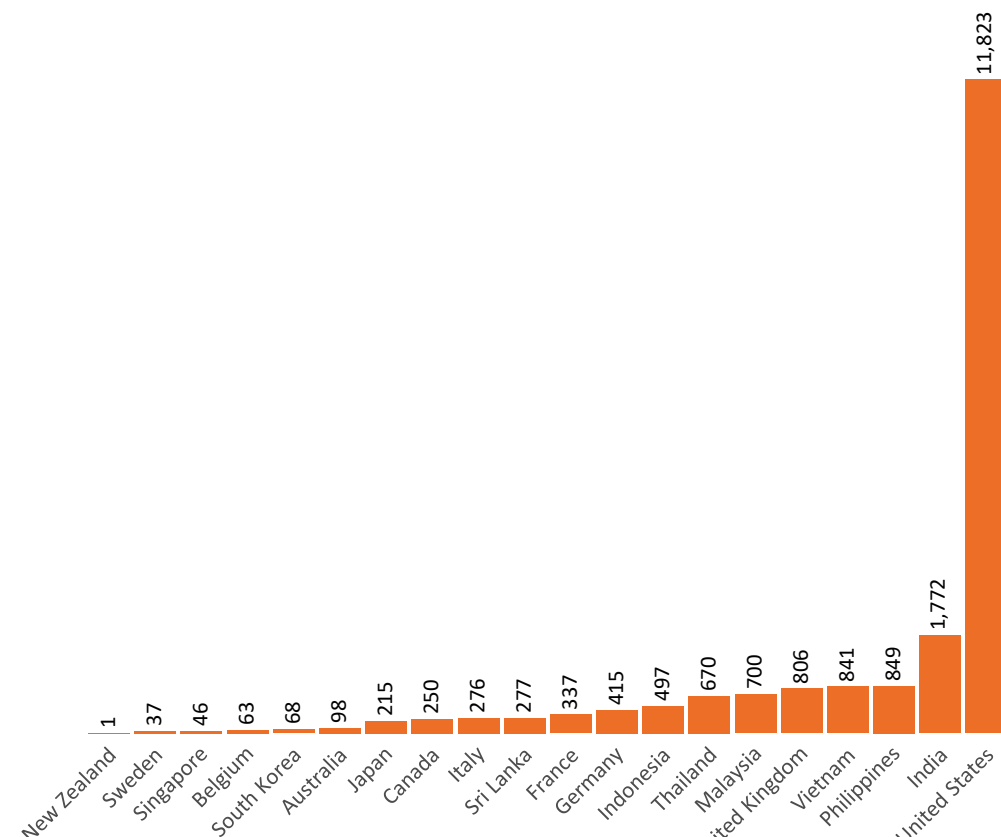
Data as at:  
10 Oct 2021

New daily cases per million in 2021, Australia and G7 countries  
Smoothed - 7 day average



Source: OWID  
Data downloaded: 11 Oct 2021 09:55  
Latest data: 09 Oct 2021

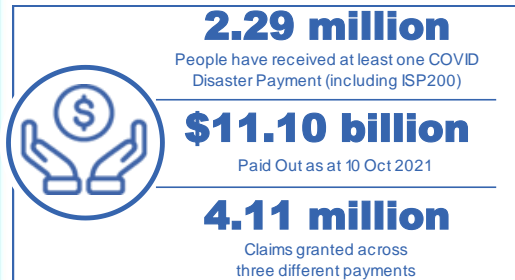
COVID-19 deaths in past 7 days - Australia and select countries



Source: OWID  
Data downloaded: 11 Oct 2021 09:55  
Latest data: 09 Oct 2021

Data as at midnight:  
10 Oct 2021

# Pandemic Response Payments



<b>COVID Disaster Payment:</b>	4.01 million claims received - 2.12 million individuals paid a total of \$10.76 billion.
<b>\$200 Income Support Payment:</b>	254,000 claims received - 173,000 individuals paid a total of \$221.00 million.
<b>Pandemic Leave Disaster Payment:</b>	88,000 claims received - 76,000 individuals paid a total of \$121.56 million.



**COVID Disaster Payment**  
assisting during a lockdown event in a Commonwealth hotspot.

**Income Support Payment \$200**  
for income support recipients who lost at least 8 hours of work.

**Pandemic Leave Disaster Payment**  
for those who have to self-isolate, quarantine or care.

For more information visit:  
[servicesaustralia.gov.au](https://servicesaustralia.gov.au)

## COVID-19 DISASTER PAYMENTS

### New South Wales

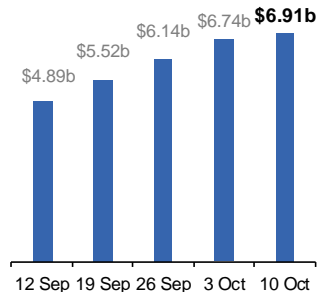
Active lockdown since 24 Jun

**1.07m people have received at least one COVID Disaster Payment.**

**\$6.91b paid out as at 10 Oct 2021.**

**\$177m paid in initial and reoccurring payments in the week ending 10 Oct 2021.**

Cumulative payments made by State since activation on 1 Jul 2021.



### Victoria

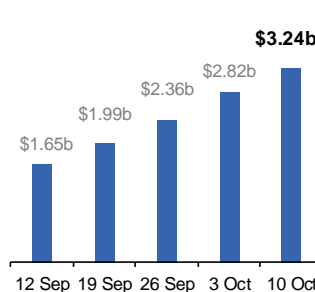
Active lockdown (#6) since 6 Aug

**701,000 people have received at least one COVID Disaster Payment.**

**\$3.24b paid out as at 10 Oct 2021.**

**\$428m paid in initial and reoccurring payments in the week ending 10 Oct 2021.**

Cumulative payments made by State since activation on 8 Jun 2021.



### Australian Capital Territory

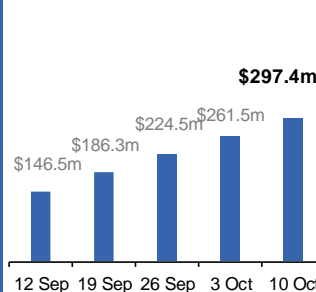
Active lockdown since 12 Aug

**64,000 people have received at least one COVID Disaster Payment.**

**\$297.4m paid out as at 10 Oct 2021.**

**\$36m paid in initial and reoccurring payments in the week ending 10 Oct 2021.**

Cumulative payments made by State since activation on 20 Aug 2021.



### Northern Territory

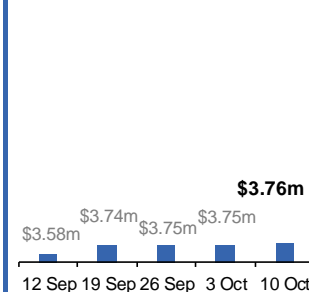
Lockdown from 18 – 20 Jul  
Claiming period ended 13 Sep

**5,796 people have received at least one COVID Disaster Payment.**

**\$3.76m paid out as at 10 Oct 2021.**

**\$4,000 paid in initial and reoccurring payments in the week ending 10 Oct 2021.**

Cumulative payments made by State since activation on 25 Aug 2021.



### Queensland

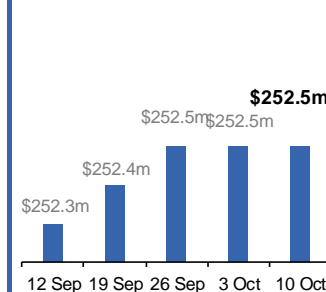
Lockdown from 31 Jul – 11 Aug  
Claiming period ended 28 Aug

**196,000 people have received at least one COVID Disaster Payment.**

**\$252.5m paid out as at 10 Oct 2021.**

**\$19,000 paid in initial and reoccurring payments in the week ending 10 Oct 2021.**

Cumulative payments made by State since activation on 7 Aug 2021.



### South Australia

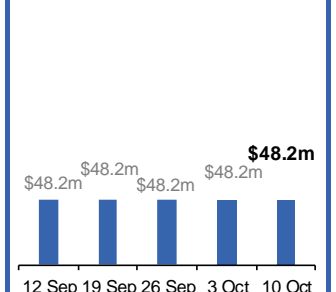
Lockdown from 21 – 27 Jul  
Claiming period ended 17 Aug

**86,000 people have received at least one COVID Disaster Payment.**

**\$48.2m paid out as at 10 Oct 2021.**

**\$1,000 paid in initial and reoccurring payments in the week ending 10 Oct 2021.**

Cumulative payments made by State since activation on 28 Jul 2021.



# Administration and Utilisation

## Doses as at Week 33

	Ordered	Available	Administered	Available minus Administered	Estimated Dose Utilisation %
	Up to Week 33	Delivered up to Week 32 including redistributions	Up to Week 33		(see note)
NSW	4,589,620	4,254,730	3,788,716	466,014	99%
VIC	4,439,612	4,071,792	3,873,940	197,852	Fully utilised
QLD	2,744,512	2,518,490	2,144,844	373,646	95%
WA	1,466,068	1,388,698	1,287,135	101,563	Fully utilised
SA	1,151,010	1,050,640	868,681	181,959	93%
TAS	389,200	370,480	359,359	11,121	Fully utilised
NT	252,234	238,636	171,685	66,951	82%
ACT	401,066	370,946	374,410	-	Fully utilised
Jurisdiction delivered total	15,433,322	14,264,412	12,868,770	1,399,106	Fully utilised
Commonwealth Aged Care & Disability	1,039,734	1,013,514	1,056,827	-	N/A
Commonwealth Primary Care & Other	23,186,086	21,907,968	16,781,250	5,126,718	87%
Total	39,659,142	37,185,894	30,706,847	6,522,360	93%

### About this data

- Ordered – Total doses delivered to sites. Based on logistics provider data. This figure includes doses allocated for administration in the coming week.
- Available – total doses that could have been administered to date, less doses re-distributed from States & Territories to Primary Care or Aged Care & Disability (i.e. does not include those deliveries recently received, and intended for use in the coming week).
- Administered – Doses administered as at 10 October 2021.
- The dose utilisation is calculated based on the total doses administered and a small % wastage in line with international standards in relation to total available doses.
- For Aged Care & Disability, the doses available for administration is for the full period (Weeks 1-33).
- Aged Care & Disability utilisation is not provided as the in-reach rollout is demand-based, with vaccines ordered based on resident numbers.