



**Australian Government**  
**Operation COVID Shield**

# COVID-19 Vaccine Roll-out

01 October 2021

Data as at:  
30 Sept 2021

## Total vaccine doses



**28,091,630** total vaccine  
doses administered nationally as at 30 September  
**+341,129** recorded in the last 24 hours



**16,177,794**

people have had at least one  
dose

**78.5%**

of people over the age of 16  
have had at least one dose



**11,357,591**

people are fully vaccinated

**55.1%**

of people over the age of 16 are  
fully vaccinated

**NSW**  
**10,198,922**  
(+121,763 daily  
increase)

**VIC**  
**7,342,535**  
(+94,259 daily  
increase)

**QLD**  
**4,837,505**  
(+58,908 daily  
increase)

**WA**  
**2,425,534**  
(+28,360 daily  
increase)

**TAS**  
**602,909**  
(+6,848 daily  
increase)

**SA**  
**1,723,737**  
(+18,469 daily  
increase)

**ACT**  
**688,080**  
(+10,480 daily  
increase)

**NT**  
**272,408**  
(+2,042 daily  
increase)

\*Administration state breakdown indicates state in which a vaccine was administered

\*\*Overall dose count includes instances of more than two doses per person in a small number of cases.

Data as at:  
30 Sept 2021

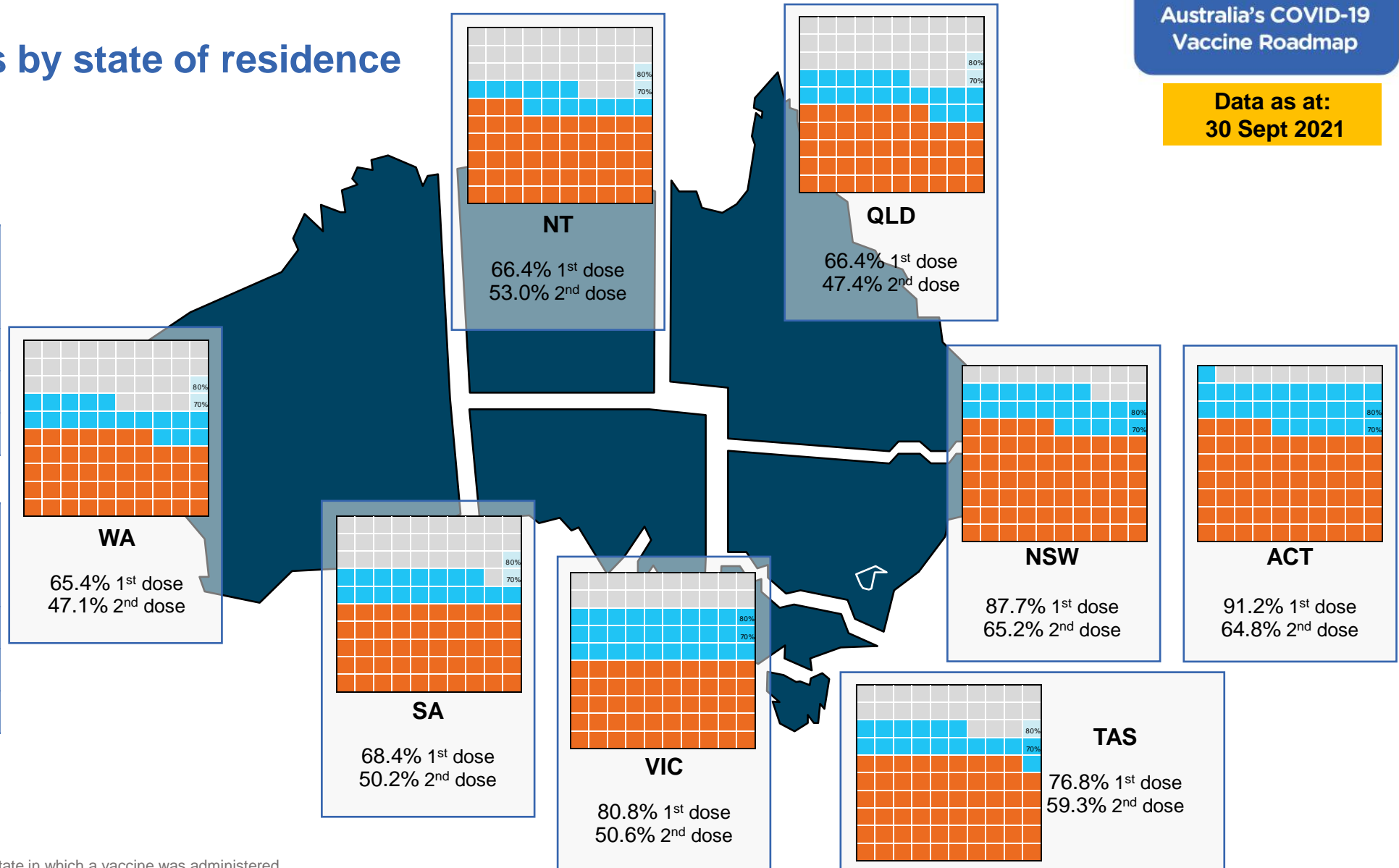
## Vaccinations by state of residence

### First doses

Age	Today	4 weeks ago	8 weeks ago
16+	78.5%	62.1%	43.8%
50+	89.5%	81.1%	69.0%
70+	94.8%	89.4%	82.3%

### Fully vaccinated

Age	Today	4 weeks ago	8 weeks ago
16+	55.1%	37.7%	22.1%
50+	71.9%	56.0%	31.5%
70+	79.1%	66.6%	47.3%



\*Residential state may differ from the state in which a vaccine was administered

## Commonwealth and Jurisdiction vaccine doses administered

Data as at:  
30 Sept 2021



**28,091,630** total vaccine  
doses administered nationally as at 30 September  
**+ 341,129** recorded in the last 24 hours



**11,859,867**  
doses administered by state  
and territory facilities  
**+ 115,396**  
recorded in the last 24 hours

NSW	Jurisdictions	Commonwealth
Cumulative	3,573,721	6,625,201
Daily increase	27,661	94,102

TAS	Jurisdictions	Commonwealth
Cumulative	332,318	270,591
Daily increase	3,712	3,136

VIC	Jurisdictions	Commonwealth
Cumulative	3,518,626	3,823,909
Daily increase	35,611	58,648

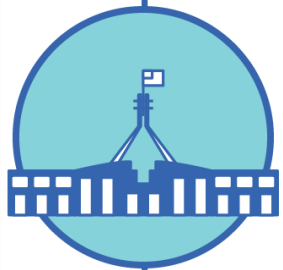
SA	Jurisdictions	Commonwealth
Cumulative	789,031	934,706
Daily increase	8,268	10,201

QLD	Jurisdictions	Commonwealth
Cumulative	1,967,885	2,869,620
Daily increase	20,770	38,138

ACT	Jurisdictions	Commonwealth
Cumulative	334,927	353,153
Daily increase	6,516	3,964

WA	Jurisdictions	Commonwealth
Cumulative	1,178,956	1,246,578
Daily increase	11,813	16,547

NT	Jurisdictions	Commonwealth
Cumulative	164,403	108,005
Daily increase	1,045	997

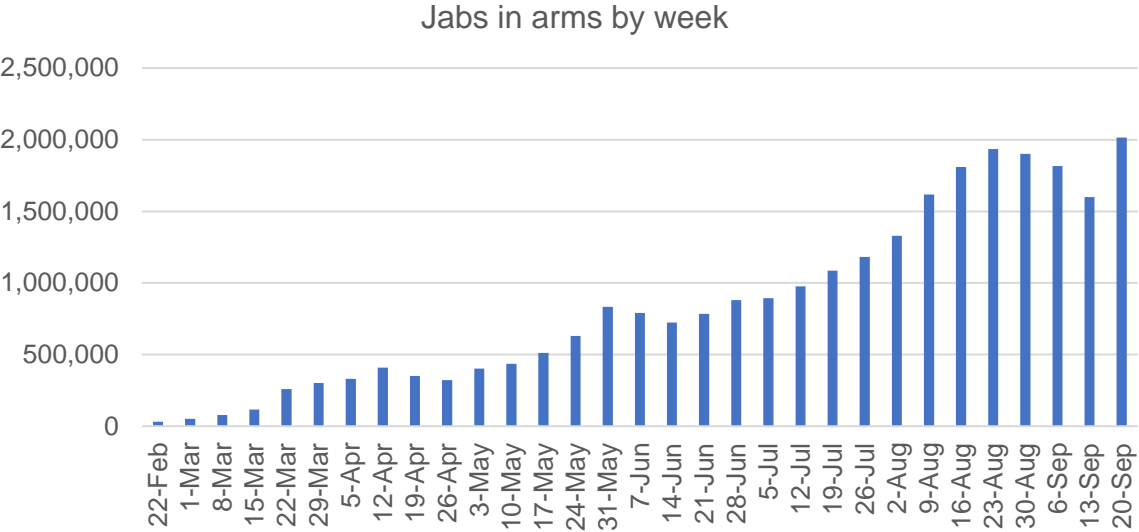


**16,231,763**  
doses administered by  
commonwealth facilities  
**+ 225,733**  
recorded in the last 24 hours

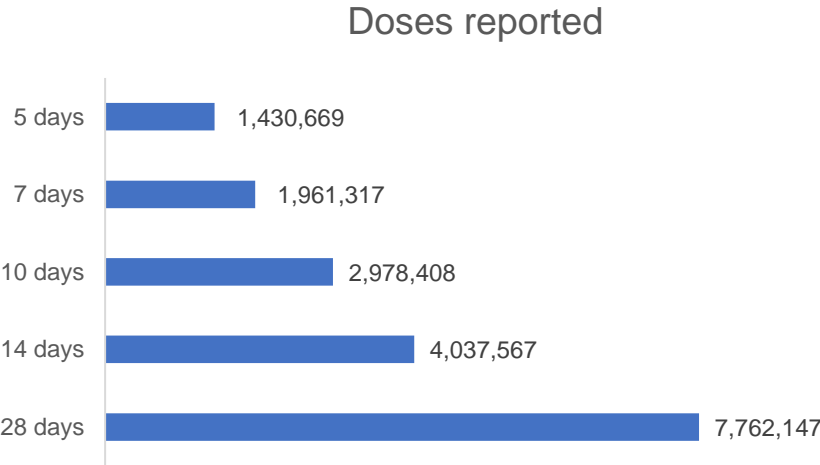
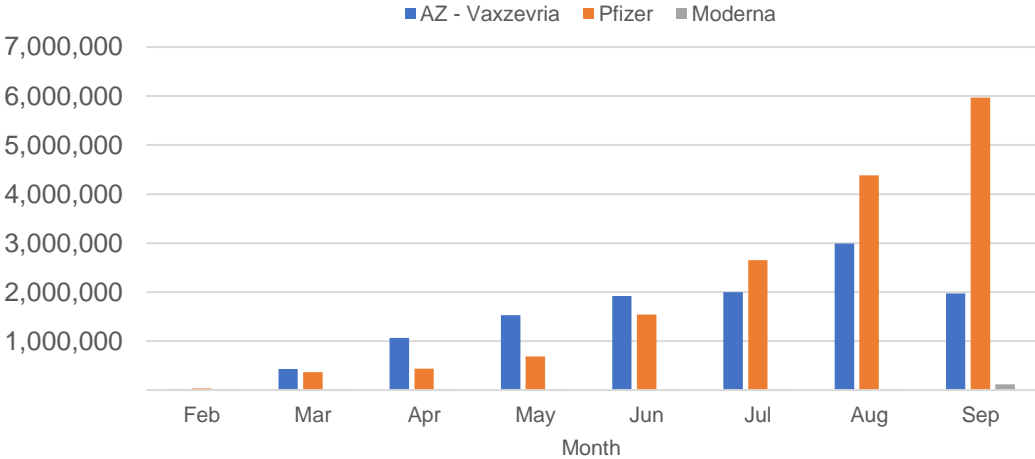
**15,237,686** total vaccine doses  
administered in primary care settings  
**994,077** total vaccine doses  
administered in aged care and disability  
settings

# Vaccine milestone charts

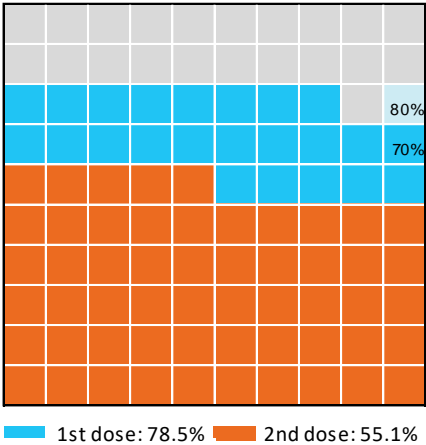
Data as at:  
30 Sept 2021



Doses by administration month and vaccine type



Eligible population percentage coverage



\*Each square represents 1% of the national population. Squares are filled as milestones are achieved.

\*Sourced from the Australian Immunisation Register.

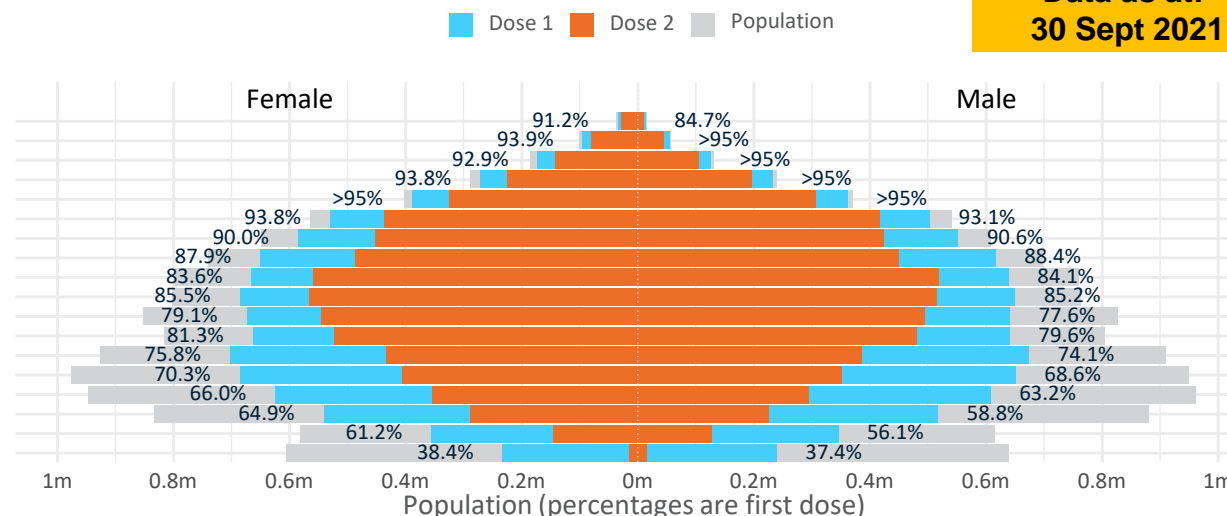
# Doses by age and sex

First and second doses by age and sex

Australia's COVID-19  
Vaccine Roadmap

Data as at:  
30 Sept 2021

Age	Dose 1	Dose 2
95+	47,357 (89.5%)	39,413 (74.5%)
90-94	149,682 (94.5%)	124,883 (78.8%)
85-89	298,151 (94.3%)	248,218 (78.5%)
80-84	502,822 (>95%)	422,482 (79.9%)
75-79	750,456 (>95%)	632,740 (81.8%)
70-74	1,033,897 (93.6%)	853,379 (77.2%)
65-69	1,137,687 (90.4%)	876,628 (69.7%)
60-64	1,267,590 (88.2%)	936,033 (65.2%)
55-59	1,305,116 (83.9%)	1,076,686 (69.2%)
50-54	1,336,471 (85.4%)	1,081,686 (69.1%)
45-49	1,315,387 (78.5%)	1,039,528 (62.0%)
40-44	1,305,785 (80.6%)	1,002,762 (61.9%)
35-39	1,379,788 (75.2%)	820,579 (44.7%)
30-34	1,342,821 (69.8%)	759,968 (39.5%)
25-29	1,240,799 (65.1%)	652,365 (34.2%)
20-24	1,063,028 (62.1%)	517,170 (30.2%)
16-19	700,957 (58.6%)	273,071 (22.8%)
12-15	471,755 (37.9%)	28,748 (2.3%)



	AUS	ACT	NSW	NT	QLD	SA	TAS	VIC	WA
16 and over - dose 1	16,177,794	313,892	5,756,898	126,626	2,729,517	984,609	338,159	4,369,882	1,383,811
16 and over - dose 2	11,357,591	222,800	4,281,843	101,042	1,948,707	723,410	260,893	2,738,168	995,657
16 and over - population	20,619,959*	344,037	6,565,651	190,571	4,112,707	1,440,400	440,172	5,407,574	2,114,978
16 and over % with dose 1	78.46%	91.24%	87.68%	66.45%	66.37%	68.36%	76.82%	80.81%	65.43%
16 and over % with dose 2	55.08%	64.76%	65.22%	53.02%	47.38%	50.22%	59.27%	50.64%	47.08%
50 and over - dose 1	7,829,229	128,688	2,644,661	48,197	1,470,990	567,537	193,758	1,992,675	734,249
50 and over - dose 2	6,292,148	112,014	2,175,960	40,040	1,153,083	439,686	161,646	1,604,028	573,361
50 and over - population	8,749,703	127,802	2,807,793	62,280	1,758,855	674,384	220,036	2,211,211	885,370
50 and over % with dose 1	89.48%	>95%	94.19%	77.39%	83.63%	84.16%	88.06%	90.12%	82.93%
50 and over % with dose 2	71.91%	87.65%	77.50%	64.29%	65.56%	65.20%	73.46%	72.54%	64.76%
70 and over - dose 1	2,782,365	42,058	936,783	10,328	530,019	220,528	72,905	695,716	254,231
70 and over - dose 2	2,321,115	37,089	797,555	8,611	438,552	175,304	61,926	581,715	205,430
70 and over - population	2,934,706	39,946	962,606	12,343	577,767	240,514	77,155	743,519	280,281
70 and over % with dose 1	94.81%	>95%	>95%	83.67%	91.74%	91.69%	94.49%	93.57%	90.71%
70 and over % with dose 2	79.09%	92.85%	82.85%	69.76%	75.90%	72.89%	80.26%	78.24%	73.29%
12 to 15 - dose 1	471,755	11,174	208,336	4,062	65,316	13,908	3,924	142,304	19,951
12 to 15 - dose 2	28,748	627	16,057	1,467	4,638	487	500	3,993	774
12 to 15 - population	1,243,990	19,693	390,330	13,060	270,146	82,747	26,308	308,611	132,869
12 to 15 % with dose 1	37.92%	56.74%	53.37%	31.10%	24.18%	16.81%	14.92%	46.11%	15.02%
12 to 15 % with dose 2	2.31%	3.18%	4.11%	11.23%	1.72%	0.59%	1.90%	1.29%	0.58%

\*National population will not equal sum of listed jurisdictions due to a small number of people counted in national population residing in some 'other' territories. Sum of state doses will not add to national total as some records are unable to be geocoded to a State or Territory.

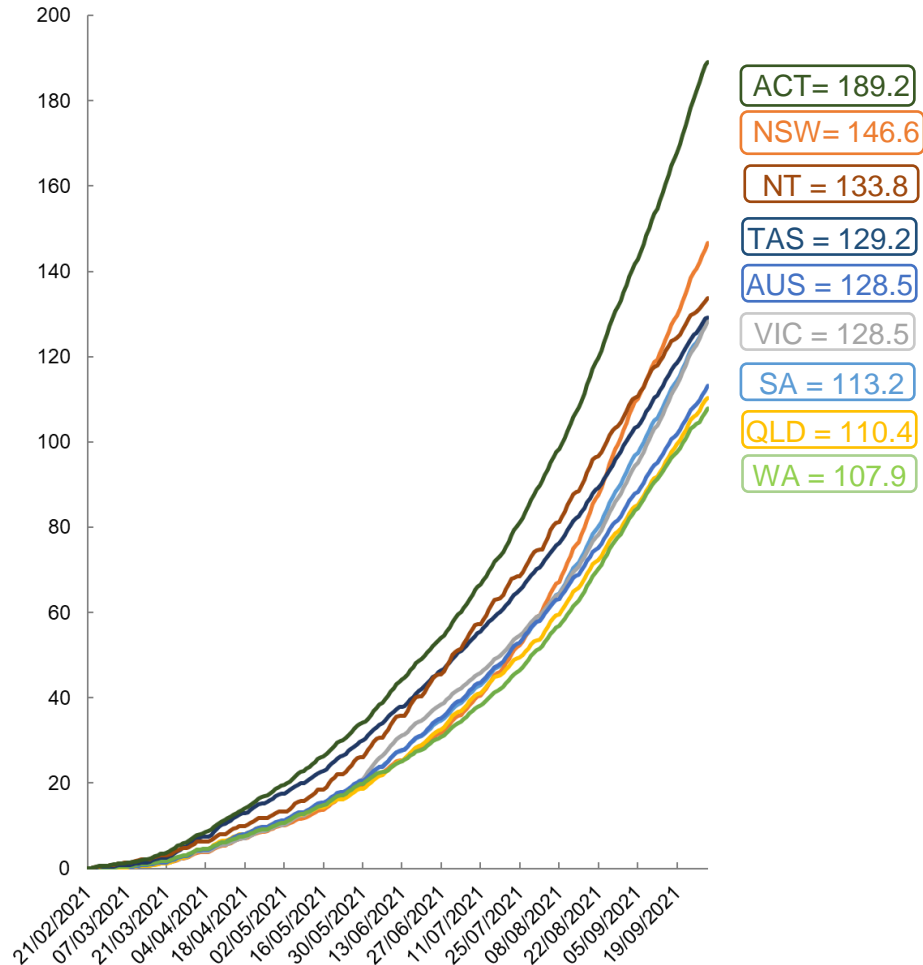
Doses sourced from Australian Immunisation Register, population from ABS ERP June 2020

# Vaccinations by location

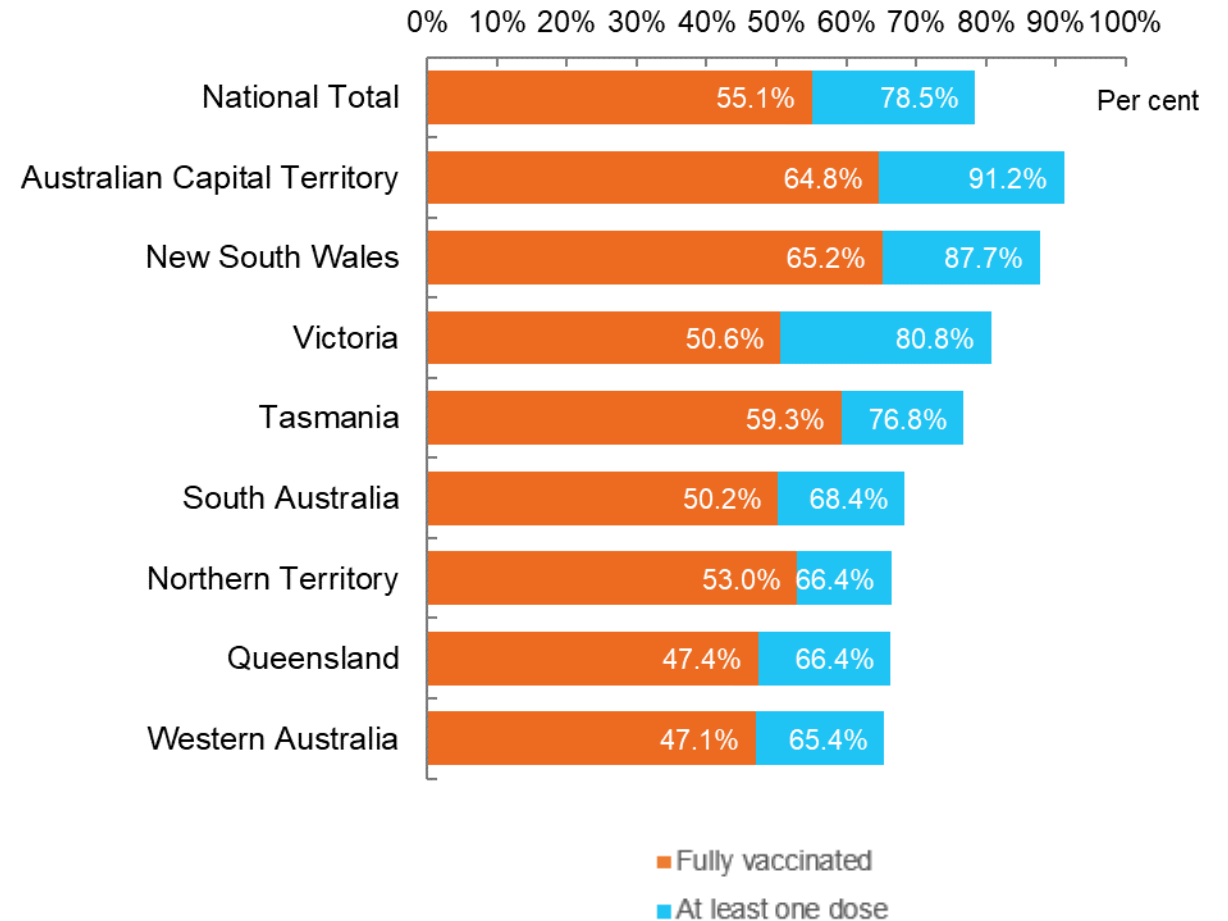
Data as at:  
30 Sept 2021

Australia's COVID-19  
Vaccine Roadmap

Cumulative total doses administered vs state populations\*\*



First and Second Doses by state of residence



\*Not an indication of percentage vaccinated, numbers will exceed 100 due to multiple doses required per person of the population  
# State populations adjusted to include 12-15 year olds as total doses includes vaccinations administered to this age group



# Aboriginal and Torres Strait Islander peoples

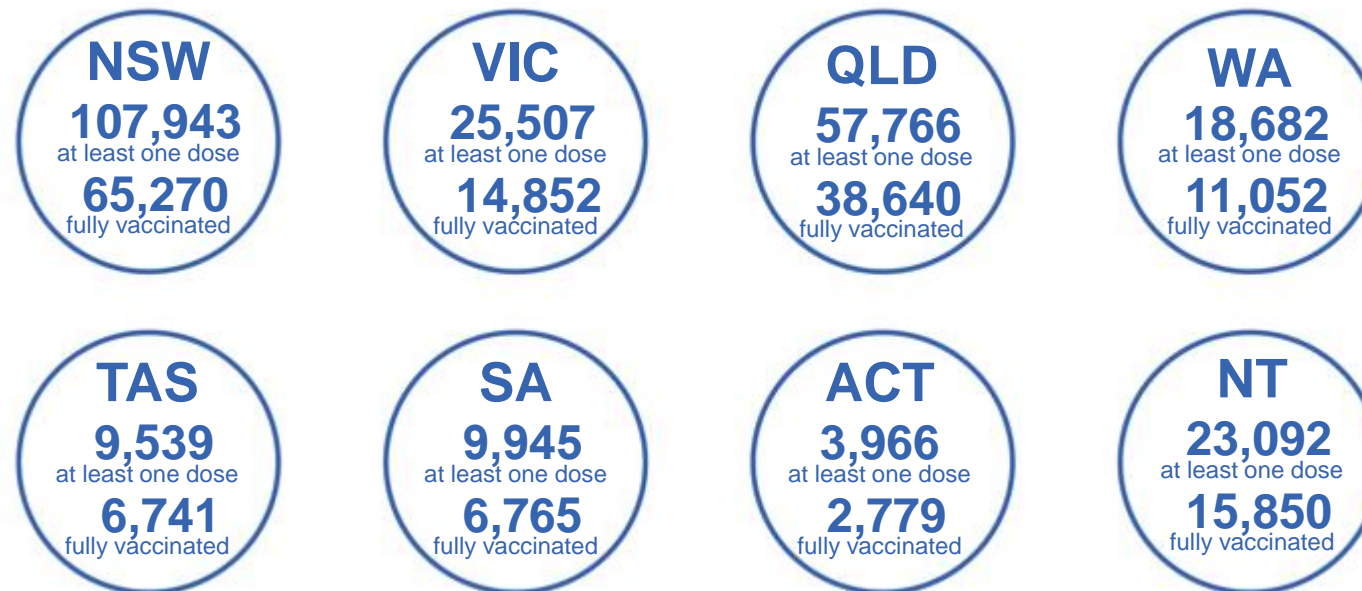
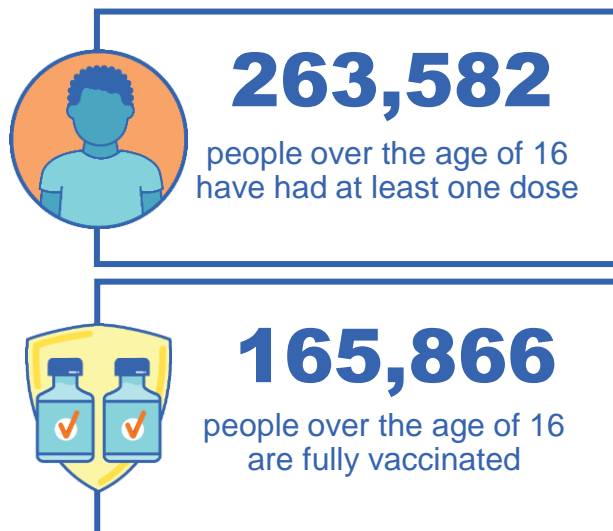
## Number of people vaccinated

Data as at:  
26 Sept 2021  
Updated weekly

Australia's COVID-19  
Vaccine Roadmap

### 167 Aboriginal community controlled health services (ACCHS)

0#	48	26	39	12	3	21	18
ACT	NSW	NT	QLD	SA	TAS	VIC	WA



**7,142** people with at least one dose  
**3,917** people fully vaccinated

residing in other territories or with missing residential information  
Source: Australian Immunisation Register

\*Identifying as Aboriginal and Torres Strait Islander is optional and the estimated population may be under reported.

\*\*Includes all Aboriginal and Torres Strait Islander peoples who have received a vaccination, not limited to those administered in an ACCHS setting

\*\*\*Updated weekly.

#ACCHS in the ACT are currently operating as a Commonwealth Vaccine Clinics so not included to avoid double counting



Data as at:  
30 Sept 2021

# Commonwealth primary care



## Primary care vaccine administration sites

<b>5,506</b>	<b>137</b>	<b>167</b>	<b>3,233</b>
GPs	CVCs	ACCHS	Pharmacies



**15,237,686** total vaccine doses administered primary care settings as at 30 September  
**+ 219,577** recorded in the last 24 hours

## Primary care vaccinations by provider type

	Doses administered	Daily increase	7 day increase
General Practice* includes other Commonwealth	14,412,047	183,534	976,594
Pharmacy	825,639	36,043	178,208



**83,692** doses administered to persons residing in other territories or with missing residential information

\*General practice includes Commonwealth Vaccination Clinics, Aboriginal Community Health Centres, Royal Flying Doctor Service and other Commonwealth vaccination facilities

Source: Australian Immunisation Register

Data as at:  
30 Sept 2021

# Commonwealth aged care and disability doses administered



**994,077**

(+ 6,156 last 24 hours)

Total vaccine doses administered in aged care and disability facilities as at 30 September

Number of doses administered as part of the Commonwealth aged and disability care rollout

**NSW**  
**466,627**  
(+2,390 daily increase)

**VIC**  
**181,635**  
(+943 daily increase)

**QLD**  
**168,168**  
(+2,406 daily increase)

**WA**  
**63,174**  
(+50 daily increase)

**TAS**  
**16,697**  
(+16 daily increase)

**SA**  
**56,818**  
(+176 daily increase)

**ACT**  
**11,690**  
(+91 daily increase)

**NT**  
**5,659**  
(+22 daily increase)

\*Sourced from the Australian Immunisation Register. Includes all persons vaccinated at participating residential aged care, disability and related industry settings.

\*\*State level breakdown indicates the residential location and may not align to the state in which the vaccination occurred.

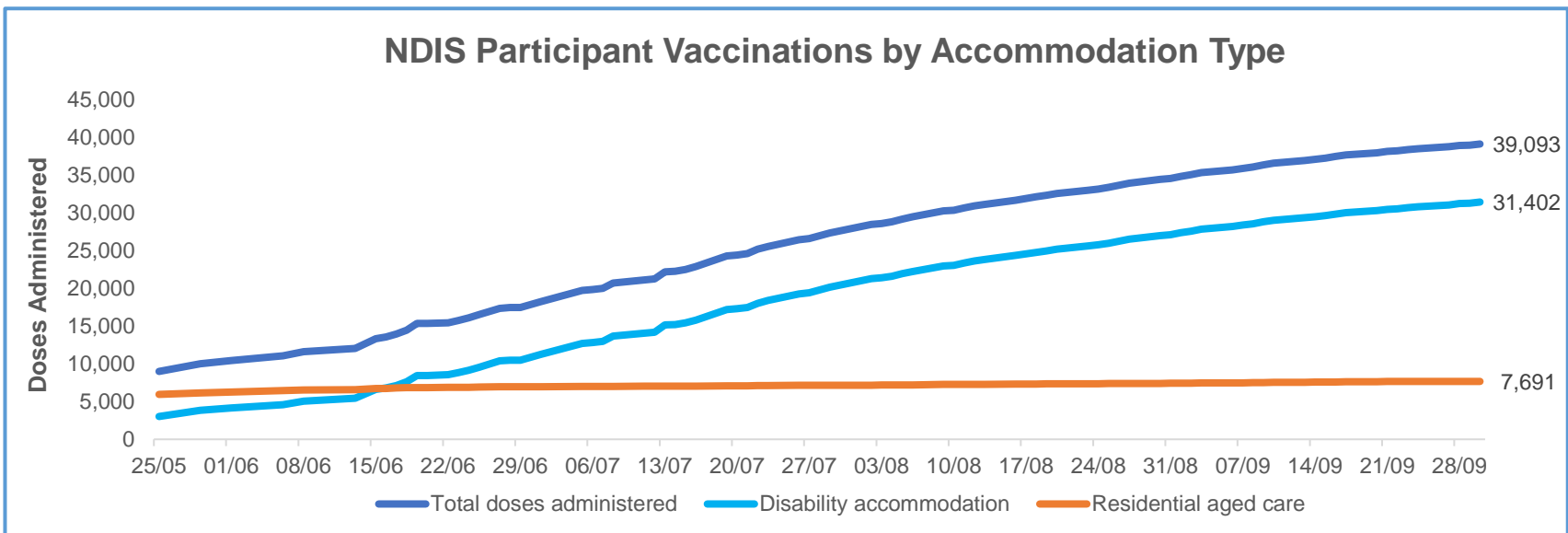
**23,609**

doses administered to persons residing in other territories or with missing residential information

Data as at:  
30 Sept 2021\*

# Vaccination rate of people with disability and the disability workforce

## Phase 1a – People with disability living in shared accommodation



	Total people with at least one dose	People fully vaccinated	Total number of individuals in cohort	Total doses administered	% People with at least one dose	% People fully vaccinated
NDIS participants living in shared accommodation **	20,697	18,396	27,293	39,093	75.8%	67.4%
NDIS screened workers ***	149,908	121,773	200,500	271,681	74.8%	60.7%

\* Updates are available Monday to Friday on participants, and bi-weekly for workers, numbers may be up to four days old.

\*\* Shared accommodation means two or more people with disability living in shared residential accommodation and NDIS participants living in Residential Aged Care accommodation as per the eligibility criteria of Phase 1a.

\*\*\* Total number of workers within the NDIS Commission Worker Screening database who have ever been successfully screened and linked to an NDIS registered provider or participant.

Source: Linkage between National Disability Insurance Agency data, NDIS Quality and Safeguards Commission data and the Australian Immunisation Register.



## Residential aged care vaccination rollout

Residential aged care facilities status

**100%**  
Commonwealth facilities visited (2,573 planned sites)

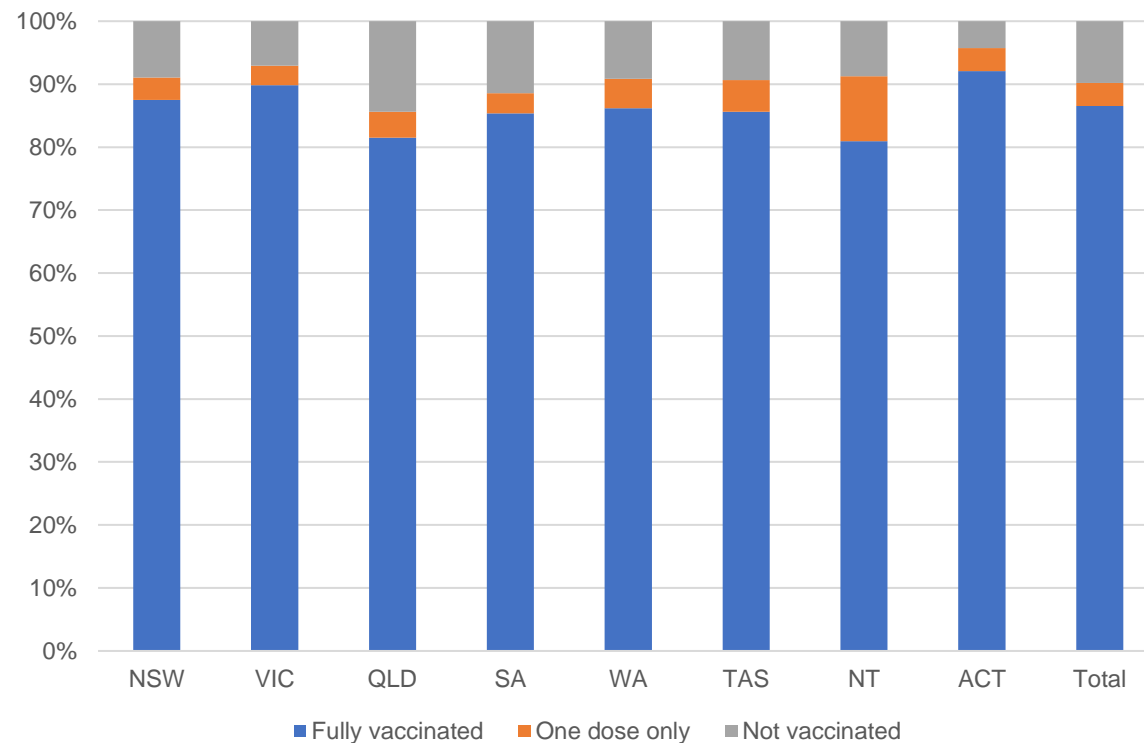
**161,134**  
People fully vaccinated

**90.2%**  
Participation rate

Australia's COVID-19  
Vaccine Roadmap

Data as at:  
30 Sept 2021

### Aged care resident vaccinations



### Aged care worker vaccinations

Jurisdictions	Total workers with at least one dose	Workers fully vaccinated	% Workers with at least one dose	% Workers fully vaccinated
NSW	78,477	68,261	99.5%	86.5%
VIC	70,844	60,708	99.0%	84.8%
QLD	47,525	38,305	99.2%	80.0%
SA	26,759	22,917	99.5%	85.2%
WA	23,204	17,737	99.6%	76.1%
TAS	7,483	6,385	99.9%	85.2%
NT	801	769	99.3%	95.3%
ACT	2,930	2,637	99.9%	89.9%
Total	258,023	217,719	99.3%	83.8%

Source: My Aged Care Portal staff vaccination progress

\*\*Resident vaccination information is reported manually by service providers

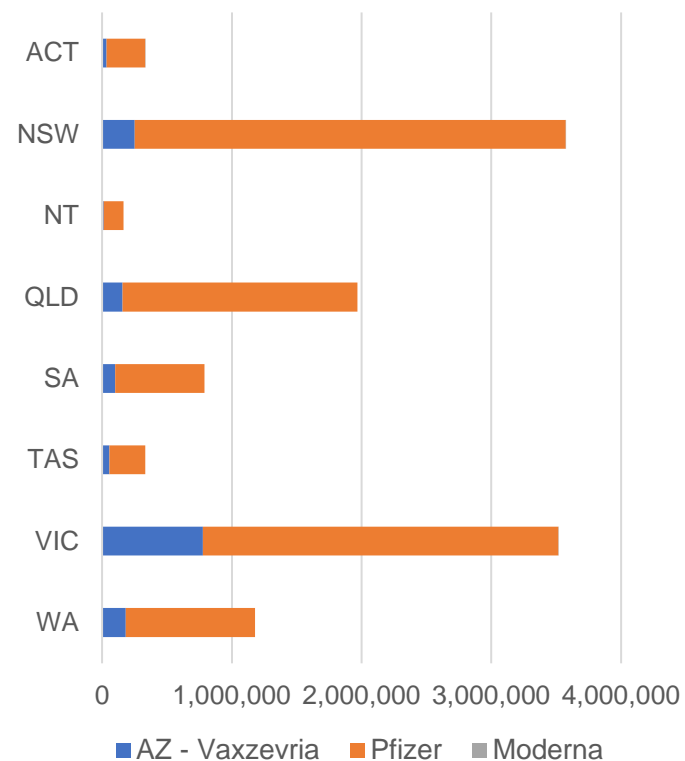
\*Status updates are provided by facilities at least once per week. Reporting is updated Monday to Friday to encompass different facility updates being made on different days.

Data is sourced directly from Aged Care Service Providers and is not drawn or closely aligned with data from AIR due to inconsistencies and potential lags in uploading of records.

Data as at:  
30 Sept 2021

# Jurisdiction administered

Total vaccine doses administered in State and Territory clinics as at 30 September



**11,859,867** total vaccine doses administered  
in State and Territory clinics as at 30 September  
+ **115,396** recorded in the last 24 hours  
+ **762,898** recorded in the last 7 days

**NSW**  
**3,573,721**  
(+27,661 daily increase)

**VIC**  
**3,518,626**  
(+35,611 daily increase)

**QLD**  
**1,967,885**  
(+20,770 daily increase)

**WA**  
**1,178,956**  
(+11,813 daily increase)

**TAS**  
**332,318**  
(+3,712 daily increase)

**SA**  
**789,031**  
(+8,268 daily increase)

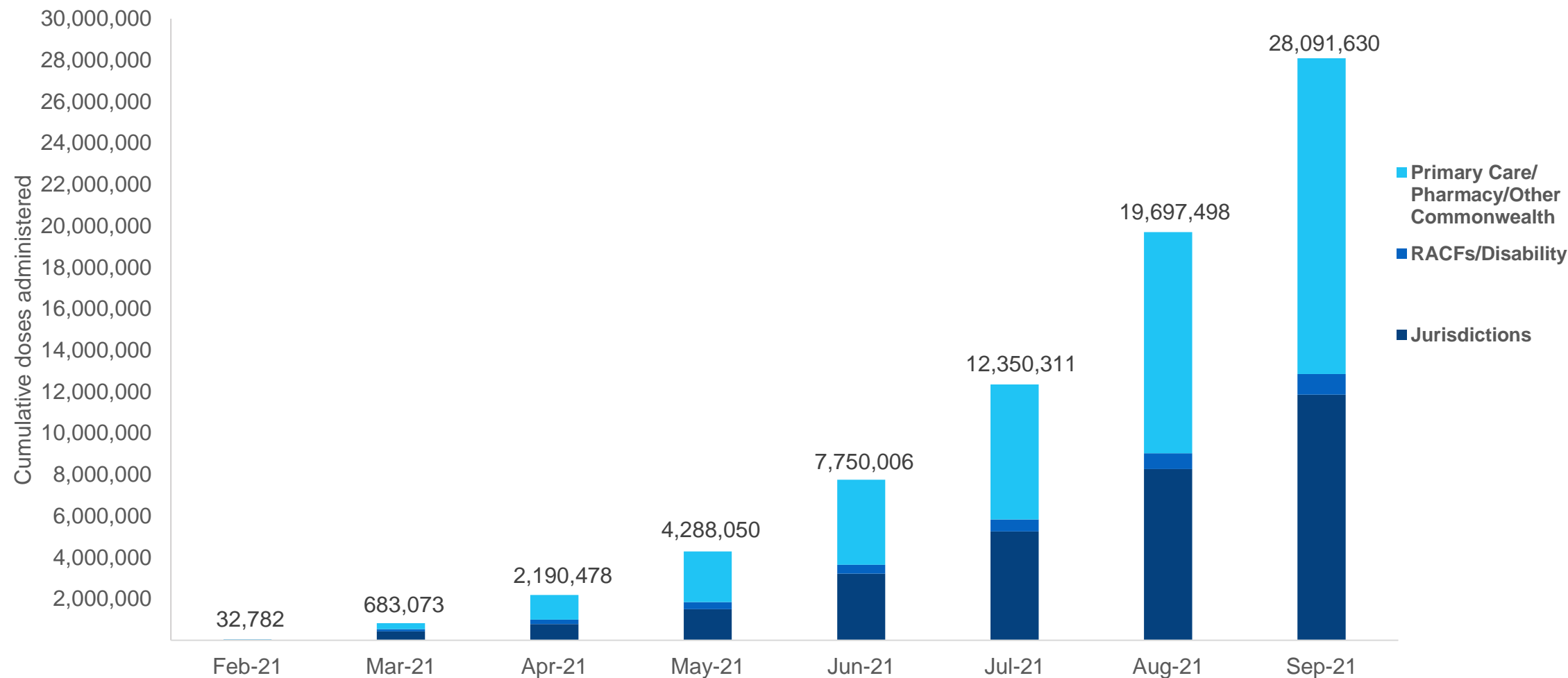
**ACT**  
**334,927**  
(+6,516 daily increase)

**NT**  
**164,403**  
(+1,045 daily increase)

\*Sourced from the Australian Immunisation Register and self-reported data. Numbers are calculated as difference in daily cumulative reported numbers to allow for historical corrections in all self-reported data sources.

## Cumulative doses administered by channel

Data as at:  
30 Sept 2021



Source: Australian Immunisation Register

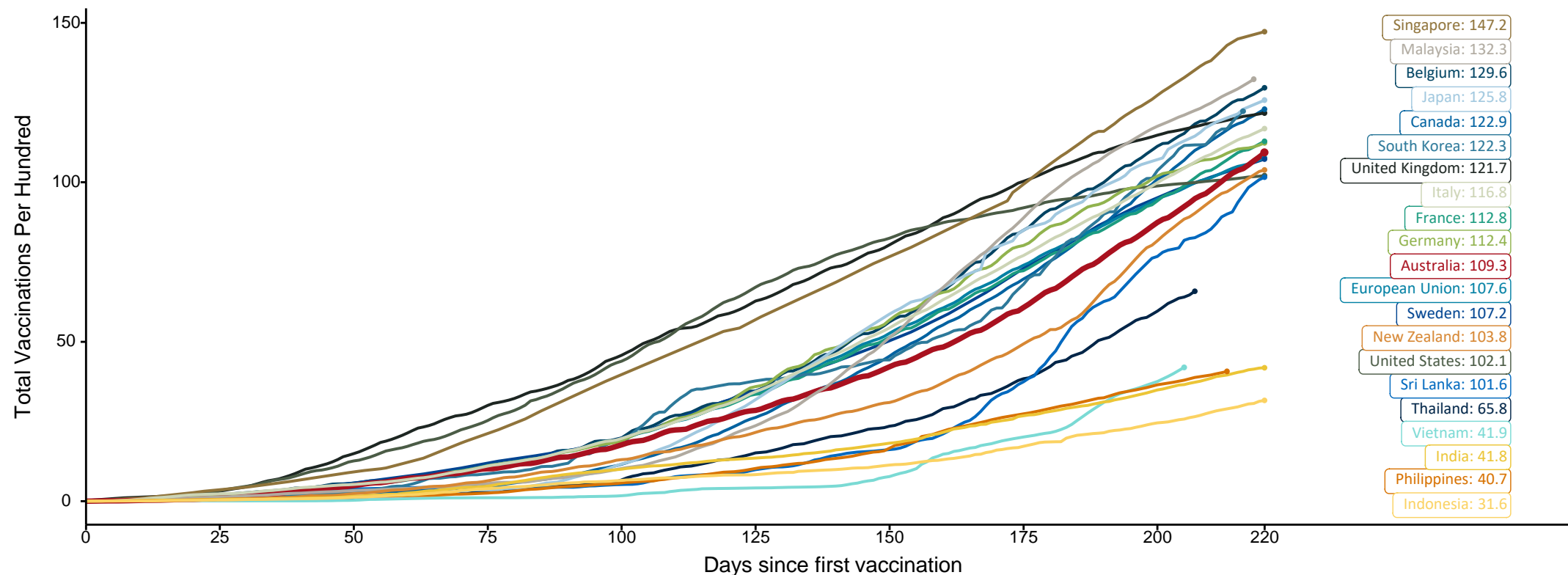


# Doses at equivalent stages of rollout (Day 220)

Data as at:  
30 Sept 2021

The x-axis is truncated at the length of Australia's vaccination program. Countries with intermittent reporting have had their doses per 100 imputed to Australia's current stage of rollout. Israel excluded as it is beyond scale of the graph

Cumulative doses administered (30 Sep): **28,091,630**



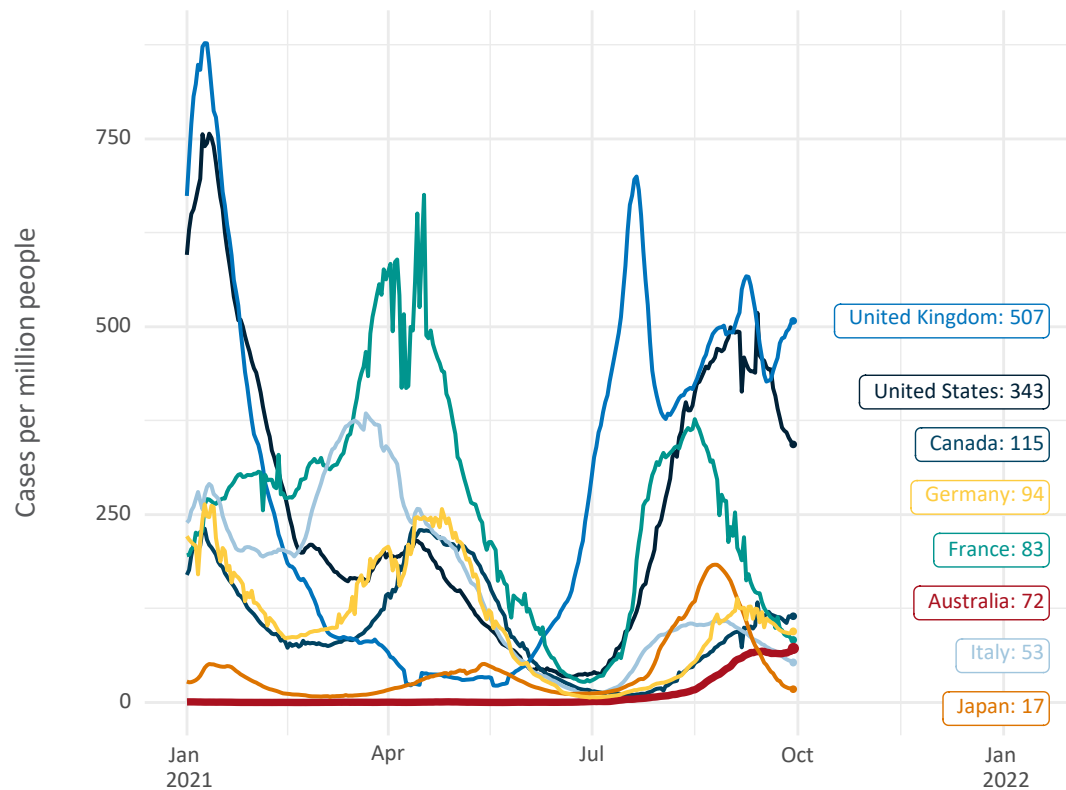
Note: From 15 September 2021, data for Australia includes all doses administered to people 12 and over. Prior to 15 September, data was for 16 and over  
Source: Department of Health (Australia), Our World in Data (international)  
Latest data: 30 September



# International data – COVID-19

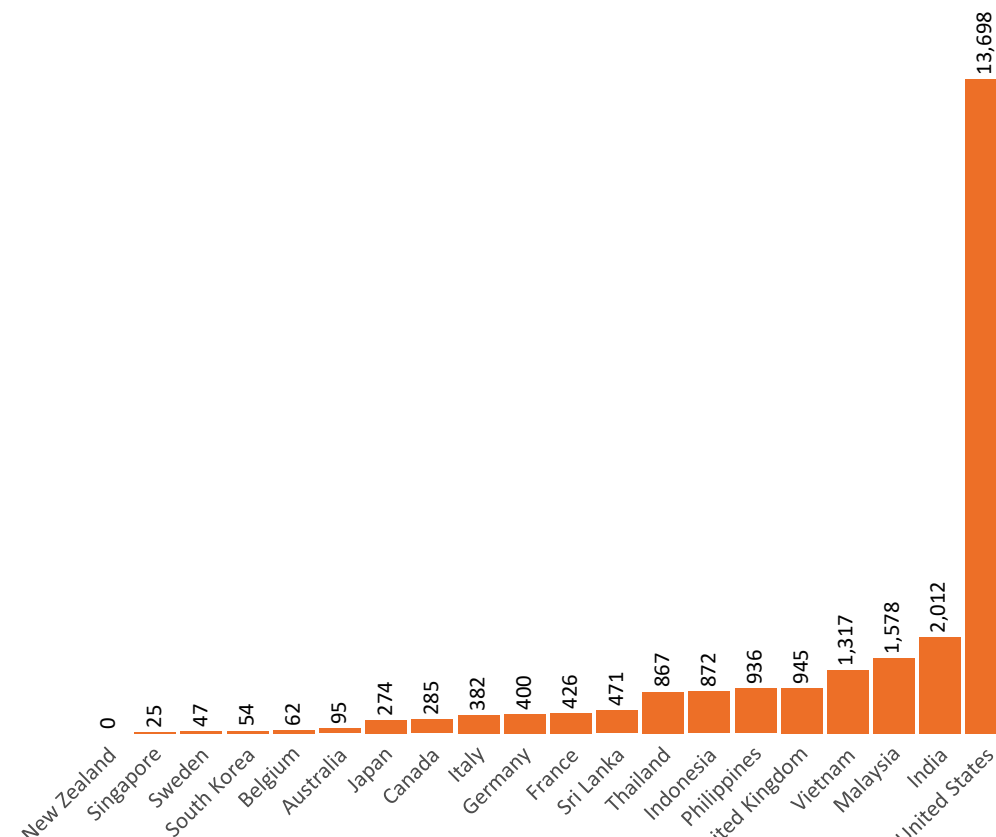
Data as at:  
30 Sept 2021

New daily cases per million in 2021, Australia and G7 countries  
Smoothed - 7 day average



Source: OWID  
Data downloaded: 01 Oct 2021 08:47  
Latest data: 29 Sep 2021

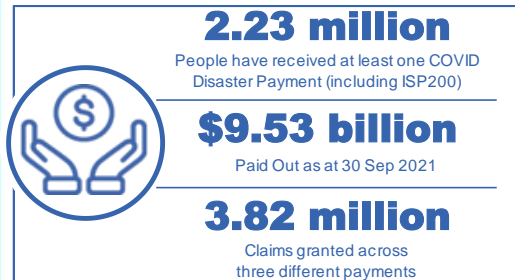
COVID-19 deaths in past 7 days - Australia and select countries



Source: OWID  
Data downloaded: 01 Oct 2021 08:47  
Latest data: 29 Sep 2021

# Pandemic Response Payments

Data as at midnight:  
30 Sep 2021



<b>COVID Disaster Payment:</b>	3.73 million claims received - 2.06 million individuals paid a total of \$9.23 billion.
<b>\$200 Income Support Payment:</b>	233,000 claims received - 168,000 individuals paid a total of \$187.74 million.
<b>Pandemic Leave Disaster Payment:</b>	77,000 claims received - 66,000 individuals paid a total of \$105.34 million.



**COVID Disaster Payment**  
assisting during a lockdown event in a Commonwealth hotspot.

**Income Support Payment \$200**  
for income support recipients who lost at least 8 hours of work.

**Pandemic Leave Disaster Payment**  
for those who have to self-isolate, quarantine or care.

For more information visit:  
[servicesaustralia.gov.au](https://servicesaustralia.gov.au)

## COVID-19 DISASTER PAYMENTS

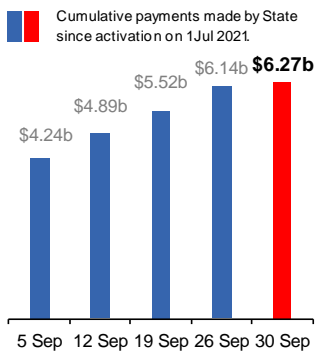
### New South Wales

Active lockdown since 24 Jun

**1.06m people have received at least one COVID Disaster Payment.**

**\$6.27b paid out as at 30 Sep 2021.**

**\$613m paid in initial and reoccurring payments in the week ending 26 Sep 2021.**



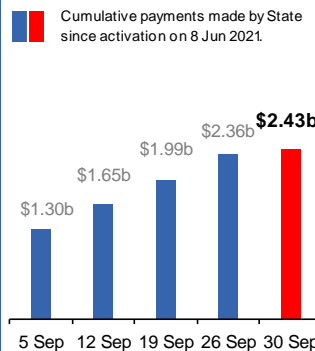
### Victoria

Active lockdown (#6) since 6 Aug

**652,000 people have received at least one COVID Disaster Payment.**

**\$2.43b paid out as at 30 Sep 2021.**

**\$378m paid in initial and reoccurring payments in the week ending 26 Sep 2021.**



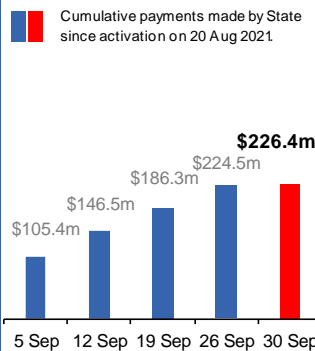
### Australian Capital Territory

Active lockdown since 12 Aug

**63,000 people have received at least one COVID Disaster Payment.**

**\$226.4m paid out as at 30 Sep 2021.**

**\$38m paid in initial and reoccurring payments in the week ending 26 Sep 2021.**



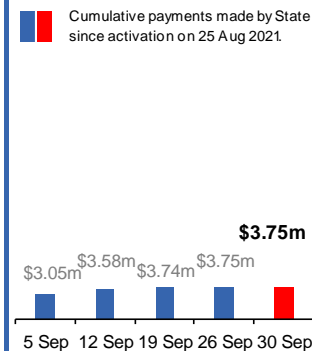
### Northern Territory

Lockdown from 18 – 20 Jul  
Claiming period ended 13 Sep

**5,787 people have received at least one COVID Disaster Payment.**

**\$3.75m paid out as at 30 Sep 2021.**

**\$7,000 paid in initial payments in the week ending 26 Sep 2021.**



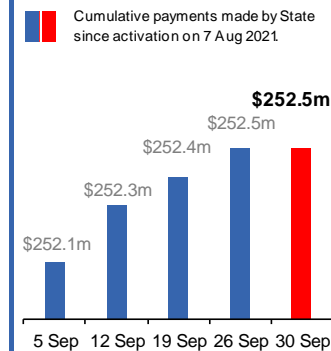
### Queensland

Lockdown from 31 Jul – 11 Aug  
Claiming period ended 28 Aug

**196,000 people have received at least one COVID Disaster Payment.**

**\$252.5m paid out as at 30 Sep 2021.**

**\$40,000 paid in initial and reoccurring payments in the week ending 26 Sep 2021.**



### South Australia

Lockdown from 21 – 27 Jul  
Claiming period ended 17 Aug

**86,000 people have received at least one COVID Disaster Payment.**

**\$48.2m paid out as at 30 Sep 2021.**

**\$2,000 paid in initial payments in the week ending 26 Sep 2021.**

