



CURRENT STATUS OF CONFIRMED CASES



298



ACT	NSW	NT	QLD	SA	TAS	VIC	WA
5	190	0	0	0	0	101	2

1,535



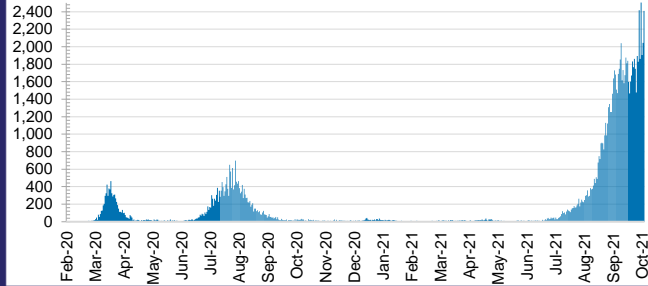
ACT	NSW	NT	QLD	SA	TAS	VIC	WA
14	978	6	16	0	0	517	4

38,781,130



0.3% POSITIVE	ACTOSITIVE		
493,513	17,587,777	395,686	4,436,454
0.2%	0.4%	0.1%	0.0%
0.3% POSITIVE	ACTOSITIVE		
2,274,995	364,819	11,442,903	1,784,983
0.0%	0.1%	0.4%	0.1%

DAILY NUMBER OF REPORTED CASES

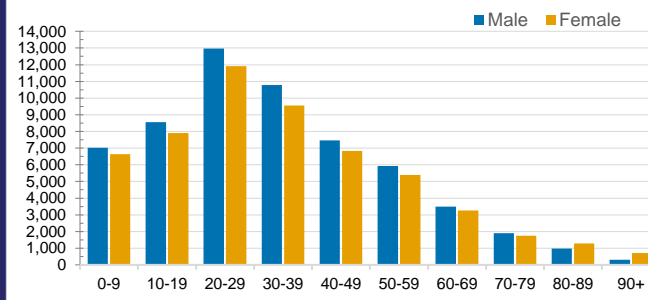


CASES IN AGED CARE SERVICES

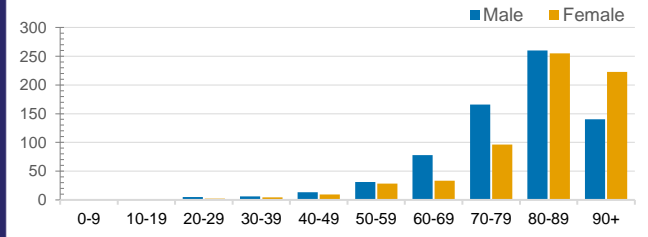
Confirmed Cases	Australia	ACT	NSW	NT	QLD	SA	TAS	VIC	WA
Residential Care Recipients	2482 [1405] (735)	15 (4)	420 [69] (65)	0	1 (1)	0	1 (1)	2045 [1336] (664)	0
In Home Care Recipients	110 [73] (11)	0	33 [13] (2)	0	8 [8]	1 [1]	5 [3] (2)	62 [48] (5)	1 (1)

Cases in care recipients [recovered] (deaths)

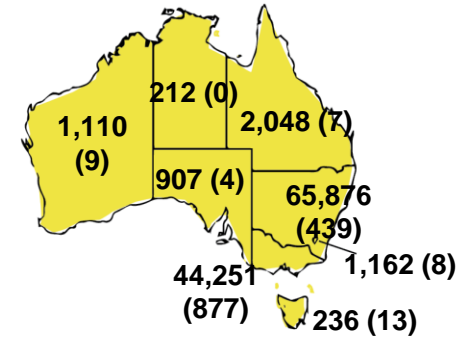
CASES BY AGE GROUP AND SEX



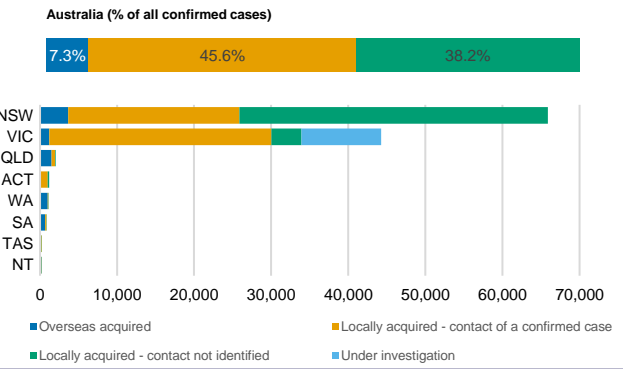
DEATHS BY AGE GROUP AND SEX



CASES (DEATHS) BY STATE AND TERRITORIES



CASES BY SOURCE OF INFECTION



PUBLIC HEALTH RESPONSE MEASURE

