



CURRENT STATUS OF CONFIRMED CASES



296



ACT	NSW	NT	QLD	SA	TAS	VIC	WA
5	193	0	0	0	0	96	2

1,496



ACT	NSW	NT	QLD	SA	TAS	VIC	WA
16	959	6	15	0	0	498	2

38,607,827

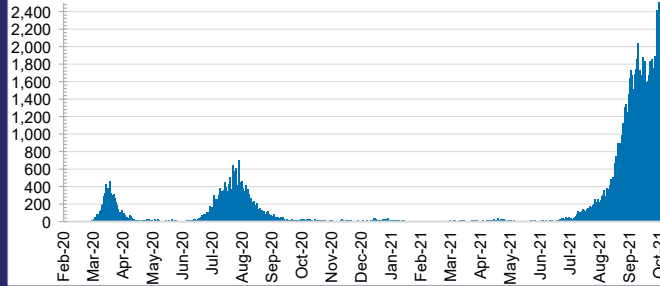


0.3% POSITIVE

**TOTAL TESTS
CONDUCTED**

ACT	NSW	NT	QLD
488,042	17,502,135	393,988	4,427,762
POSITIVE	POSITIVE	POSITIVE	POSITIVE
0.2%	0.4%	0.1%	0.0%
SA	TAS	VIC	WA
2,270,376	363,758	11,380,714	1,781,052
POSITIVE	POSITIVE	POSITIVE	POSITIVE
0.0%	0.1%	0.4%	0.1%

DAILY NUMBER OF REPORTED CASES

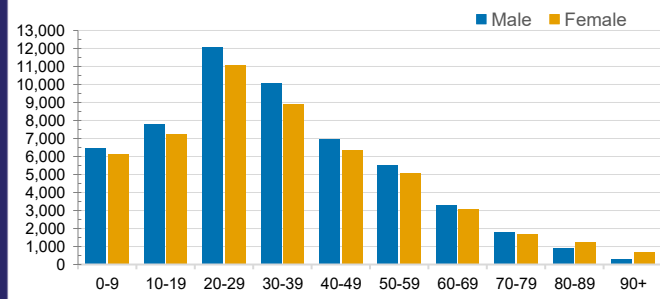


CASES IN AGED CARE SERVICES

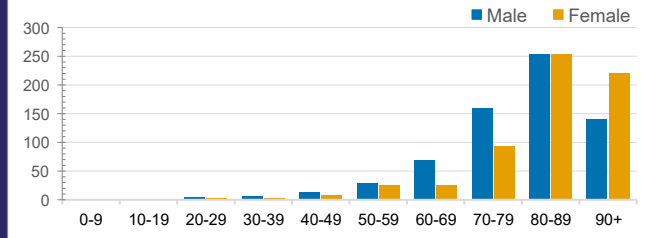
Confirmed Cases	Australia	ACT	NSW	NT	QLD	SA	TAS	VIC	WA
Residential Care Recipients	2453 [1405] (728)	12 (3)	417 [69] (62)	0	1 (1)	0	1 (1)	2022 [1336] (661)	0
In Home Care Recipients	104 [73] (11)	0	33 [13] (2)	0	8 [8]	1 [1]	5 [3] (2)	62 [48] (5)	1 (1)

Cases in care recipients [recovered] (deaths)

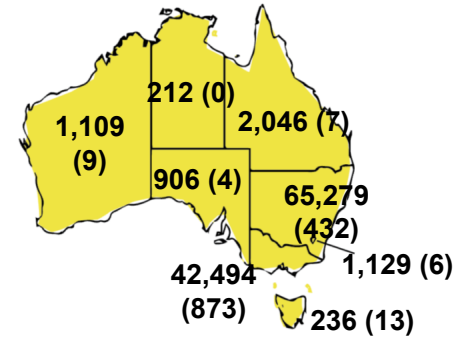
CASES BY AGE GROUP AND SEX



DEATHS BY AGE GROUP AND SEX

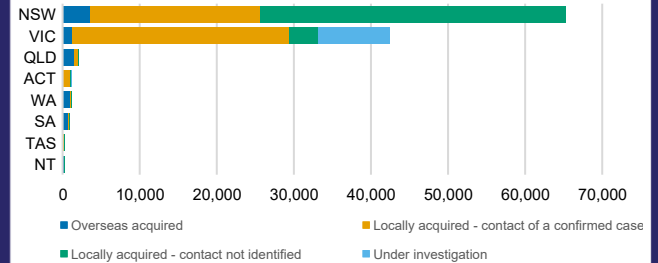


CASES (DEATHS) BY STATE AND TERRITORIES



CASES BY SOURCE OF INFECTION

Australia (% of all confirmed cases)



PUBLIC HEALTH RESPONSE MEASURE

Proportion of total cases under investigation

