



CURRENT STATUS OF CONFIRMED CASES



226



ACT	NSW	NT	QLD	SA	TAS	VIC	WA
7	82	0	0	0	0	137	0

1,151



ACT	NSW	NT	QLD	SA	TAS	VIC	WA
10	381	2	12	0	0	746	0

42,905,646

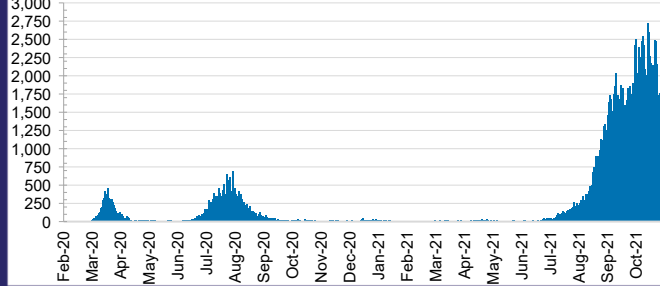


0.4% POSITIVE

**TOTAL TESTS
CONDUCTED**

ACT	NSW	NT	QLD
552,848	19,487,363	430,934	4,647,853
POSITIVE	POSITIVE	POSITIVE	POSITIVE
0.3%	0.4%	0.1%	0.0%
SA	TAS	VIC	WA
2,396,344	389,659	13,141,919	1,858,726
POSITIVE	POSITIVE	POSITIVE	POSITIVE
0.0%	0.1%	0.6%	0.1%

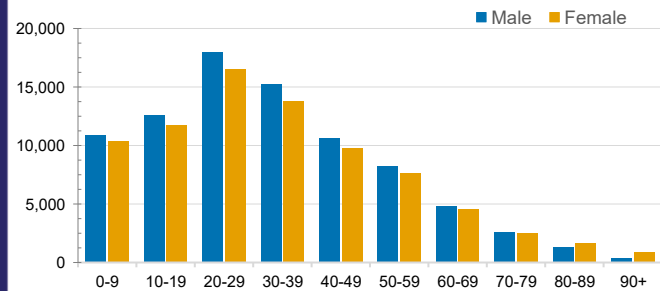
DAILY NUMBER OF REPORTED CASES



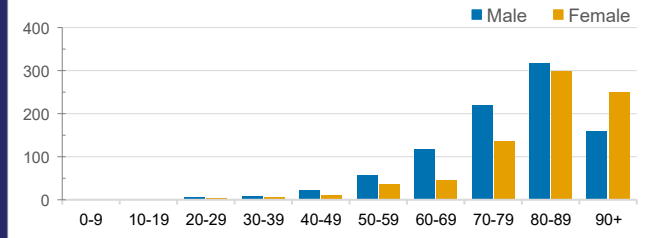
CASES IN AGED CARE SERVICES

Confirmed Cases	Australia	ACT	NSW	NT	QLD	SA	TAS	VIC	WA
Residential Care Recipients	2915 [1465] (793)	15 [8] (7)	478 [89] (85)	0	1 (1)	0	1 (1)	2420 [1368] (699)	0
In Home Care Recipients	117 [75] (10)	0	34 [15] (2)	0	8 [8]	1 [1]	5 [3] (2)	68 [48] (5)	1 (1)
Cases in care recipients [recovered] (deaths)									

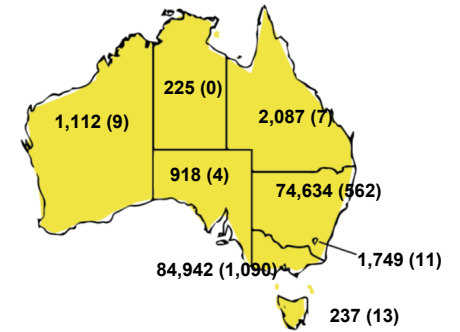
CASES BY AGE GROUP AND SEX



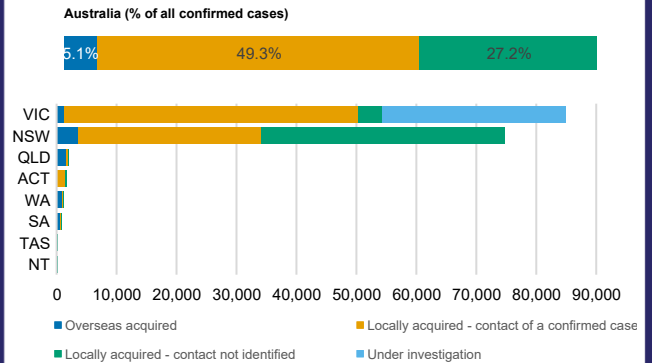
DEATHS BY AGE GROUP AND SEX



CASES (DEATHS) BY STATE AND TERRITORIES



CASES BY SOURCE OF INFECTION



PUBLIC HEALTH RESPONSE MEASURE

