



**CURRENT STATUS OF CONFIRMED CASES**



**241**



ACT	NSW	NT	QLD	SA	TAS	VIC	WA
6	97	0	0	0	0	138	0

**1,192**



ACT	NSW	NT	QLD	SA	TAS	VIC	WA
11	418	2	13	0	0	748	0

**42,713,804**

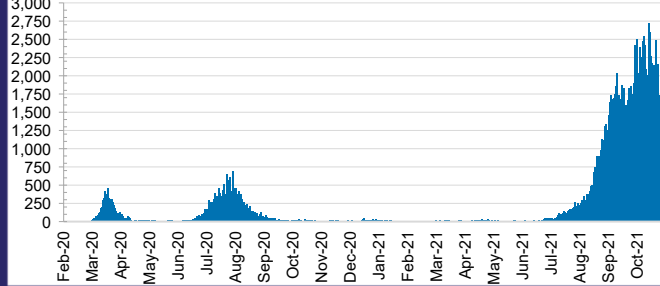


**0.4% POSITIVE**

**TOTAL TESTS  
CONDUCTED**

ACT	NSW	NT	QLD
551,290	19,397,685	429,569	4,639,463
POSITIVE	POSITIVE	POSITIVE	POSITIVE
0.3%	0.4%	0.1%	0.0%
SA	TAS	VIC	WA
2,391,700	388,937	13,059,271	1,855,889
POSITIVE	POSITIVE	POSITIVE	POSITIVE
0.0%	0.1%	0.6%	0.1%

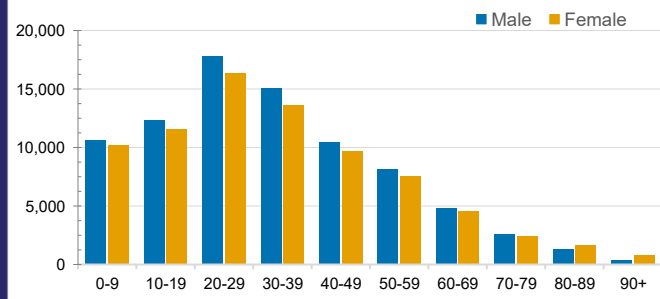
**DAILY NUMBER OF REPORTED CASES**



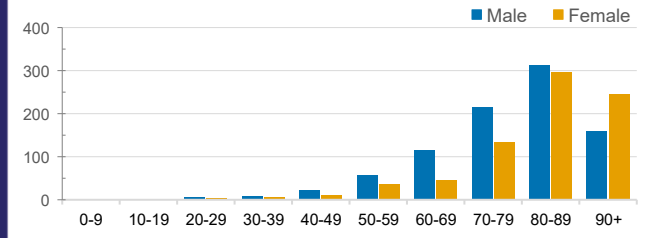
**CASES IN AGED CARE SERVICES**

Confirmed Cases	Australia	ACT	NSW	NT	QLD	SA	TAS	VIC	WA
Residential Care Recipients	2893 [1465] (789)	15 [8] (7)	478 [89] (84)	0	1 (1)	0	1 (1)	2398 [1368] (696)	0
In Home Care Recipients	117 [75] (10)	0	34 [15] (2)	0	8 [8]	1 [1]	5 [3] (2)	68 [48] (5)	1 (1)
Cases in care recipients [recovered] (deaths)									

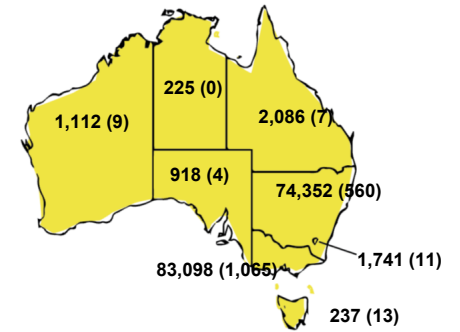
**CASES BY AGE GROUP AND SEX**



**DEATHS BY AGE GROUP AND SEX**

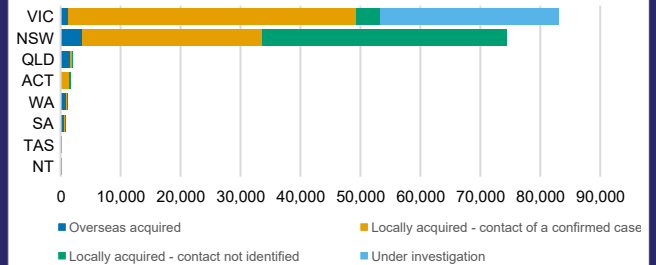


**CASES (DEATHS) BY STATE AND TERRITORIES**



**CASES BY SOURCE OF INFECTION**

Australia (% of all confirmed cases)



**PUBLIC HEALTH RESPONSE MEASURE**

Proportion of total cases under investigation

