



CURRENT STATUS OF CONFIRMED CASES



278



ACT	NSW	NT	QLD	SA	TAS	VIC	WA
10	116	0	0	0	0	152	0

1,317



ACT	NSW	NT	QLD	SA	TAS	VIC	WA
20	474	6	15	0	0	802	0

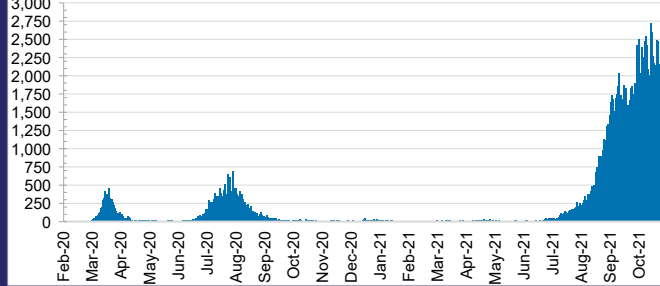
42,368,964



0.4% POSITIVE

ACT	NSW	NT	QLD
547,013	19,236,458	426,385	4,620,599
POSITIVE	POSITIVE	POSITIVE	POSITIVE
0.3%	0.4%	0.1%	0.0%
SA	TAS	VIC	WA
2,382,628	387,173	12,920,382	1,848,326
POSITIVE	POSITIVE	POSITIVE	POSITIVE
0.0%	0.1%	0.6%	0.1%

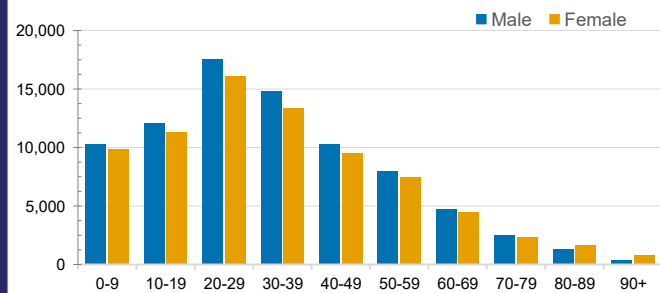
DAILY NUMBER OF REPORTED CASES



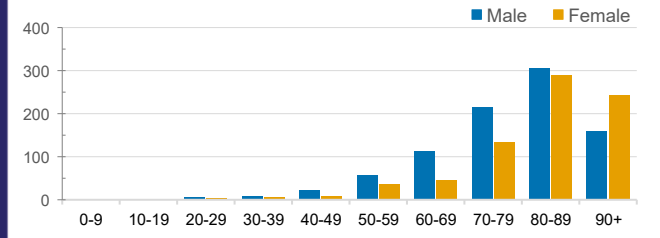
CASES IN AGED CARE SERVICES

Confirmed Cases	Australia	ACT	NSW	NT	QLD	SA	TAS	VIC	WA
Residential Care Recipients	2858 [1455] (778)	15 [8] (7)	468 [84] (84)	0	1 (1)	0	1 (1)	2373 [1363] (685)	0
In Home Care Recipients	117 [75] (10)	0	34 [15] (2)	0	8 [8]	1 [1]	5 [3] (2)	68 [48] (5)	1 (1)
Cases in care recipients [recovered] (deaths)									

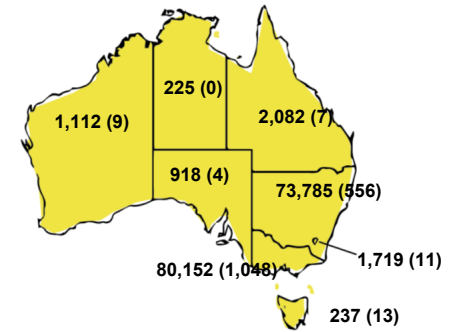
CASES BY AGE GROUP AND SEX



DEATHS BY AGE GROUP AND SEX

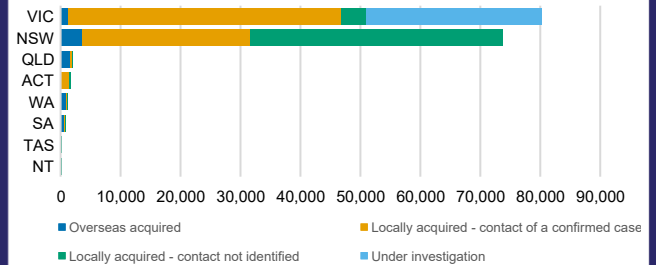


CASES (DEATHS) BY STATE AND TERRITORIES



CASES BY SOURCE OF INFECTION

Australia (% of all confirmed cases)



PUBLIC HEALTH RESPONSE MEASURE

Proportion of total cases under investigation

