



CURRENT STATUS OF CONFIRMED CASES



279



ACT	NSW	NT	QLD	SA	TAS	VIC	WA
12	123	0	0	0	0	144	0

1,284



ACT	NSW	NT	QLD	SA	TAS	VIC	WA
19	469	9	17	0	0	770	0

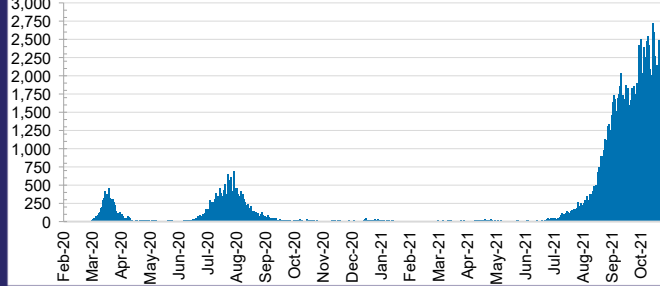
42,070,700



0.4% POSITIVE

ACT	NSW	NT	QLD
545,232	19,110,106	424,155	4,597,568
POSITIVE	POSITIVE	POSITIVE	POSITIVE
0.3%	0.4%	0.1%	0.0%
SA	TAS	VIC	WA
2,374,714	385,470	12,793,853	1,839,602
POSITIVE	POSITIVE	POSITIVE	POSITIVE
0.0%	0.1%	0.6%	0.1%

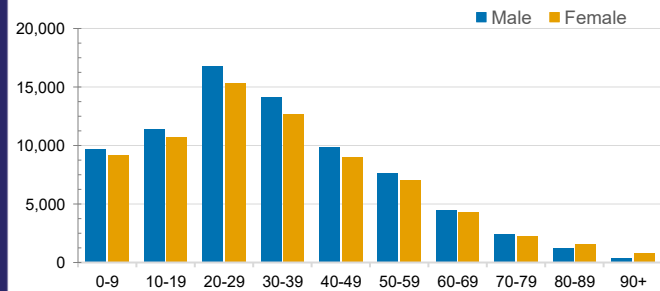
DAILY NUMBER OF REPORTED CASES



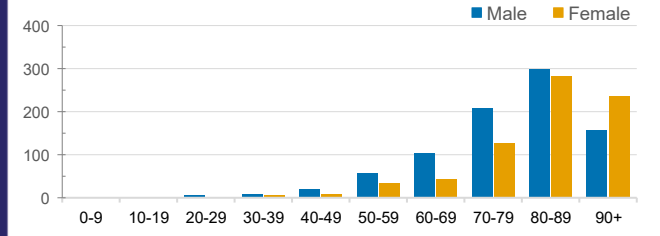
CASES IN AGED CARE SERVICES

Confirmed Cases	Australia	ACT	NSW	NT	QLD	SA	TAS	VIC	WA
Residential Care Recipients	2797 [1449] (776)	15 [8] (7)	458 [84] (83)	0	1 (1)	0	1 (1)	2322 [1357] (684)	0
In Home Care Recipients	117 [75] (10)	0	34 [13] (2)	0	8 [8]	1 [1]	5 [3] (2)	68 [48] (5)	1 (1)
Cases in care recipients [recovered] (deaths)									

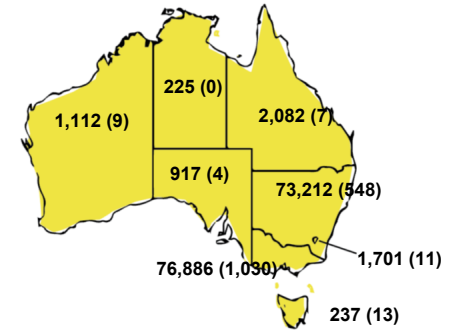
CASES BY AGE GROUP AND SEX



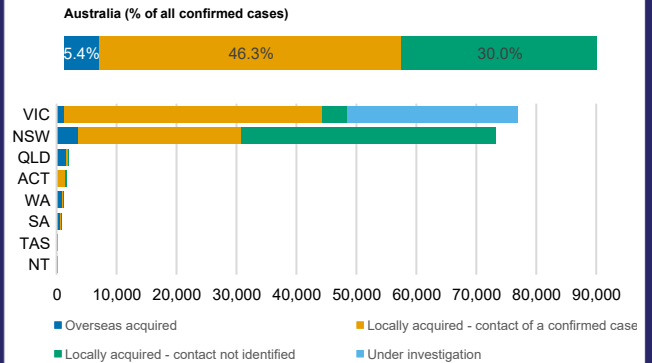
DEATHS BY AGE GROUP AND SEX



CASES (DEATHS) BY STATE AND TERRITORIES



CASES BY SOURCE OF INFECTION



PUBLIC HEALTH RESPONSE MEASURE

