



CURRENT STATUS OF CONFIRMED CASES



276



ACT	NSW	NT	QLD	SA	TAS	VIC	WA
10	124	0	1	0	0	141	0

1,343



ACT	NSW	NT	QLD	SA	TAS	VIC	WA
21	523	9	11	0	0	779	0

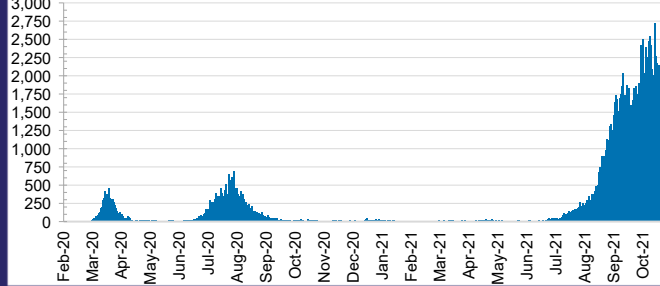
41,752,789



0.4% POSITIVE

ACT	NSW	NT	QLD
542,655	18,969,394	420,435	4,589,204
POSITIVE	POSITIVE	POSITIVE	POSITIVE
0.3%	0.4%	0.1%	0.0%
SA	TAS	VIC	WA
2,365,193	384,309	12,643,959	1,837,640
POSITIVE	POSITIVE	POSITIVE	POSITIVE
0.0%	0.1%	0.6%	0.1%

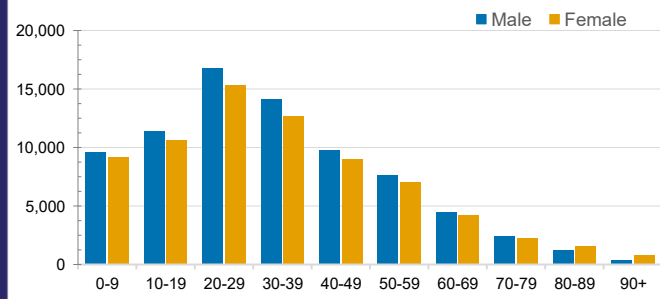
DAILY NUMBER OF REPORTED CASES



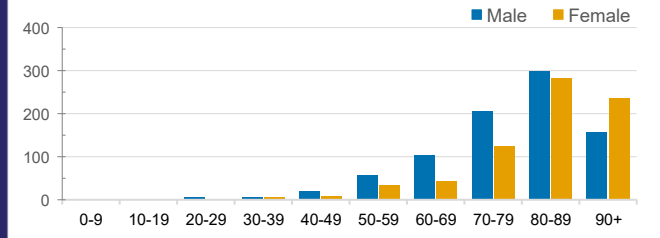
CASES IN AGED CARE SERVICES

Confirmed Cases	Australia	ACT	NSW	NT	QLD	SA	TAS	VIC	WA
Residential Care Recipients	2783 [1449] (774)	15 [8] (7)	457 [84] (82)	0	1 (1)	0	1 (1)	2309 [1357] (683)	0
In Home Care Recipients	115 [73] (10)	0	33 [13] (2)	0	8 [8]	1 [1]	5 [3] (2)	66 [48] (5)	1 (1)
Cases in care recipients [recovered] (deaths)									

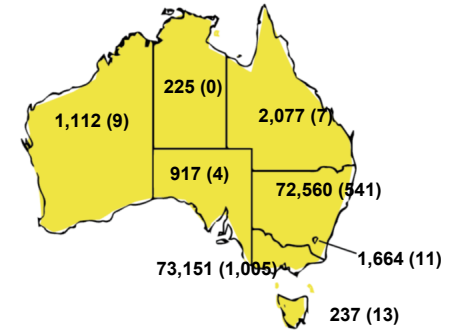
CASES BY AGE GROUP AND SEX



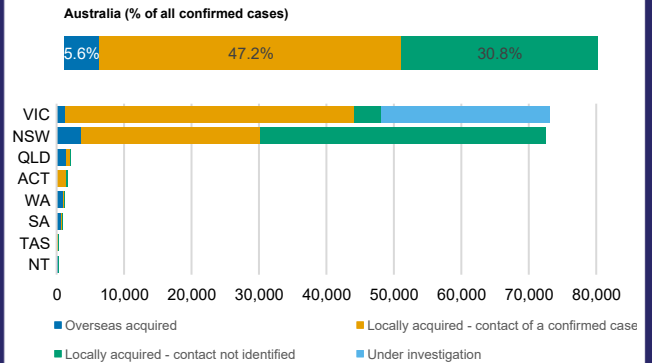
DEATHS BY AGE GROUP AND SEX



CASES (DEATHS) BY STATE AND TERRITORIES



CASES BY SOURCE OF INFECTION



PUBLIC HEALTH RESPONSE MEASURE

