



**CURRENT STATUS OF CONFIRMED CASES**



**297**



ACT	NSW	NT	QLD	SA	TAS	VIC	WA
9	132	0	1	0	0	155	0

**1,502**



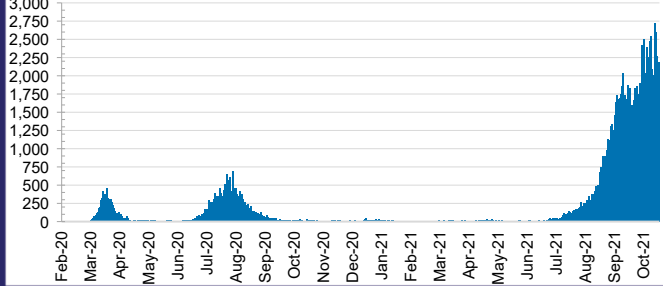
ACT	NSW	NT	QLD	SA	TAS	VIC	WA
17	606	9	18	0	0	851	1

**41,192,051**



ACT	NSW	NT	QLD
536,639	18,703,898	415,659	4,563,485
POSITIVE	POSITIVE	POSITIVE	POSITIVE
0.3%	0.4%	0.1%	0.0%
SA	TAS	VIC	WA
2,348,879	379,886	12,416,785	1,826,820
POSITIVE	POSITIVE	POSITIVE	POSITIVE
0.0%	0.1%	0.5%	0.1%

**DAILY NUMBER OF REPORTED CASES**

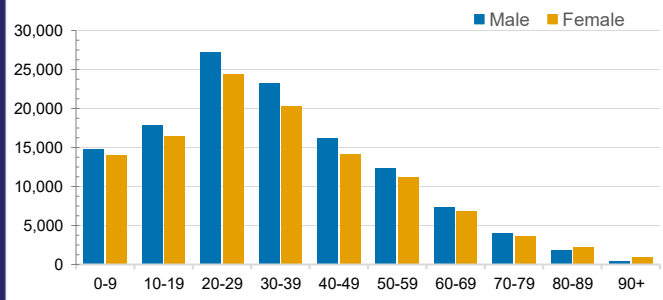


**CASES IN AGED CARE SERVICES**

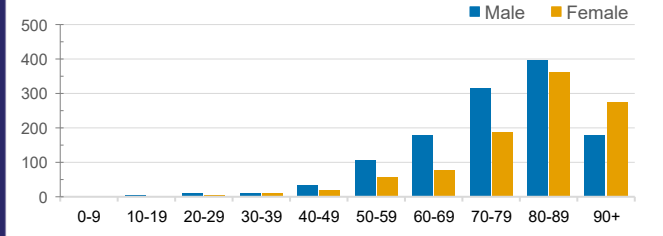
Confirmed Cases	Australia	ACT	NSW	NT	QLD	SA	TAS	VIC	WA
Residential Care Recipients	2712 [1434] (765)	15 (7)	443 [84] (79)	0	1 (1)	0	1 (1)	2252 [1350] (677)	0
In Home Care Recipients	113 [73] (10)	0	33 [13] (2)	0	8 [8]	1 [1]	5 [3] (2)	65 [48] (5)	1 (1)

Cases in care recipients [recovered] (deaths)

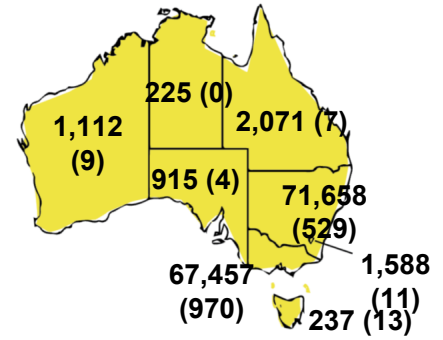
**CASES BY AGE GROUP AND SEX**



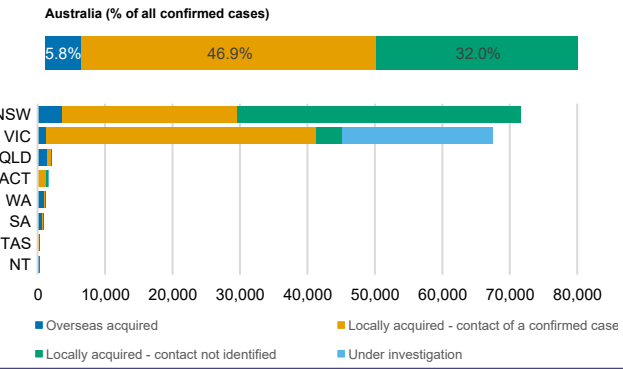
**DEATHS BY AGE GROUP AND SEX**



**CASES (DEATHS) BY STATE AND TERRITORIES**



**CASES BY SOURCE OF INFECTION**



**PUBLIC HEALTH RESPONSE MEASURE**

