



CURRENT STATUS OF CONFIRMED CASES



309



ACT	NSW	NT	QLD	SA	TAS	VIC	WA
8	155	0	1	0	0	144	1

1,486



ACT	NSW	NT	QLD	SA	TAS	VIC	WA
19	766	7	17	0	0	675	2

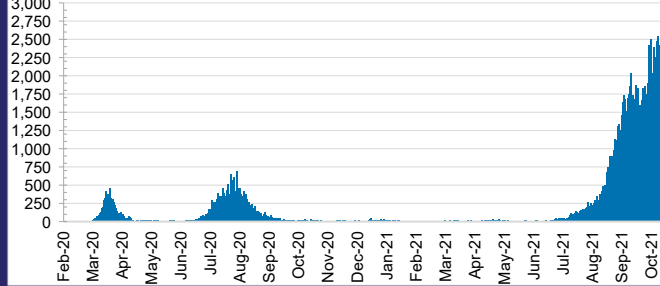
40,122,604



**TOTAL TESTS
CONDUCTED**

0.3% POSITIVE			
ACT	NSW	NT	QLD
518,738	18,232,566	404,079	4,513,736
POSITIVE	POSITIVE	POSITIVE	POSITIVE
0.3%	0.4%	0.1%	0.0%
SA	TAS	VIC	WA
2,314,861	371,672	11,958,341	1,808,611
POSITIVE	POSITIVE	POSITIVE	POSITIVE
0.0%	0.1%	0.5%	0.1%

DAILY NUMBER OF REPORTED CASES

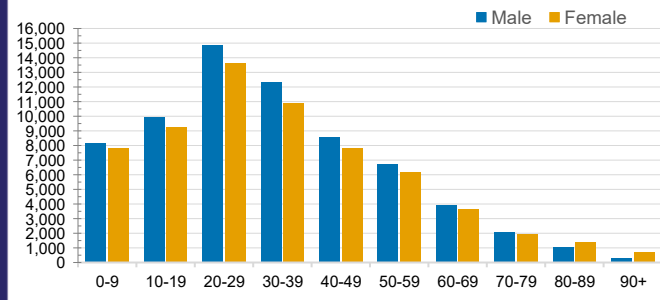


CASES IN AGED CARE SERVICES

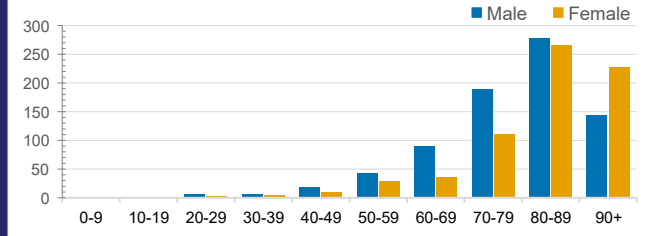
Confirmed Cases	Australia	ACT	NSW	NT	QLD	SA	TAS	VIC	WA
Residential Care Recipients	2574 [1430] (753)	0	434 [81] (75)	0	1 (1)	0	1 (1)	2123 [1349] (671)	0
In Home Care Recipients	110 [73] (10)	0	33 [13] (2)	0	8 [8]	1 [1]	5 [3] (2)	62 [48] (5)	1 (1)

Cases in care recipients [recovered] (deaths)

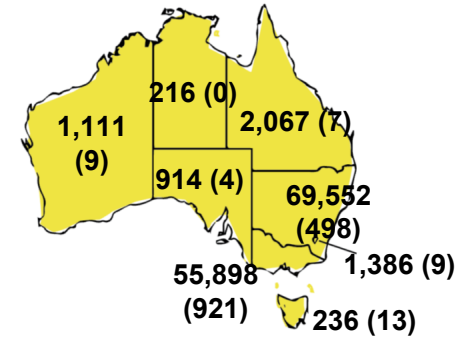
CASES BY AGE GROUP AND SEX



DEATHS BY AGE GROUP AND SEX

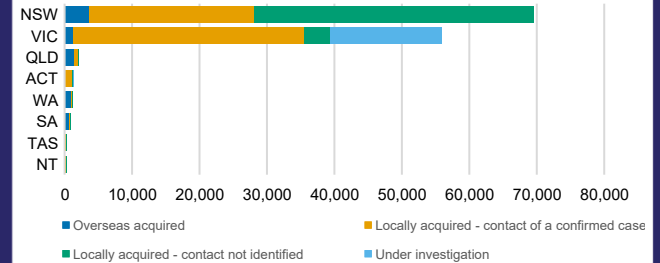


CASES (DEATHS) BY STATE AND TERRITORIES



CASES BY SOURCE OF INFECTION

Australia (% of all confirmed cases)



PUBLIC HEALTH RESPONSE MEASURE

Proportion of total cases under investigation

