



**CURRENT STATUS OF CONFIRMED CASES**



**296**



| ACT | NSW | NT | QLD | SA | TAS | VIC | WA |
|-----|-----|----|-----|----|-----|-----|----|
| 7   | 153 | 0  | 1   | 0  | 0   | 133 | 2  |

**1,492**



| ACT | NSW | NT | QLD | SA | TAS | VIC | WA |
|-----|-----|----|-----|----|-----|-----|----|
| 18  | 769 | 6  | 18  | 0  | 0   | 677 | 4  |

**39,943,525**

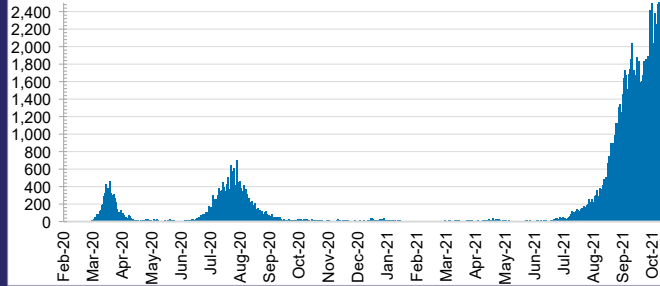


**TOTAL TESTS  
CONDUCTED**

**0.3% POSITIVE**

| ACT       | NSW        | NT         | QLD       |
|-----------|------------|------------|-----------|
| 516,815   | 18,143,578 | 403,755    | 4,505,013 |
| POSITIVE  | POSITIVE   | POSITIVE   | POSITIVE  |
| 0.3%      | 0.4%       | 0.1%       | 0.0%      |
| SA        | TAS        | VIC        | WA        |
| 2,309,344 | 370,783    | 11,889,832 | 1,804,405 |
| POSITIVE  | POSITIVE   | POSITIVE   | POSITIVE  |
| 0.0%      | 0.1%       | 0.5%       | 0.1%      |

**DAILY NUMBER OF REPORTED CASES**

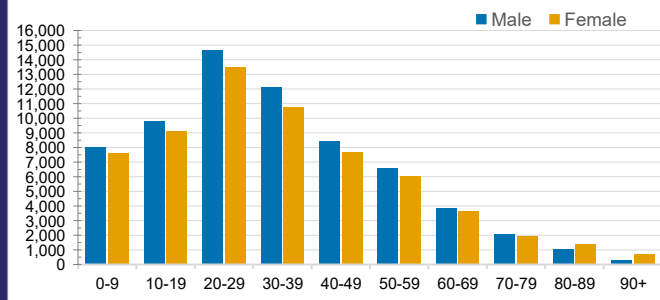


**CASES IN AGED CARE SERVICES**

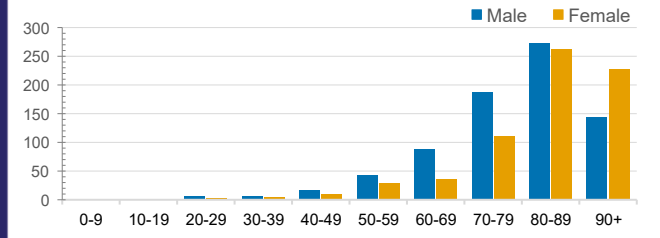
| Confirmed Cases             | Australia         | ACT | NSW           | NT | QLD   | SA    | TAS       | VIC               | WA    |
|-----------------------------|-------------------|-----|---------------|----|-------|-------|-----------|-------------------|-------|
| Residential Care Recipients | 2563 [1430] (747) | 0   | 440 [81] (72) | 0  | 1 (1) | 0     | 1 (1)     | 2106 [1349] (668) | 0     |
| In Home Care Recipients     | 110 [73] (10)     | 0   | 33 [13] (2)   | 0  | 8 [8] | 1 [1] | 5 [3] (2) | 62 [48] (5)       | 1 (1) |

Cases in care recipients [recovered] (deaths)

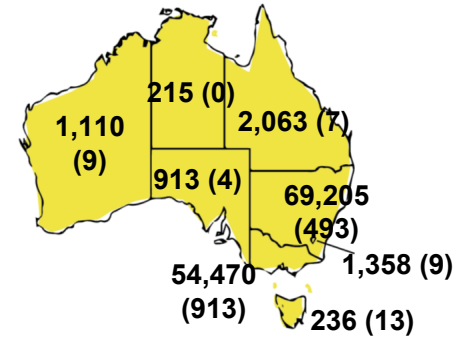
**CASES BY AGE GROUP AND SEX**



**DEATHS BY AGE GROUP AND SEX**

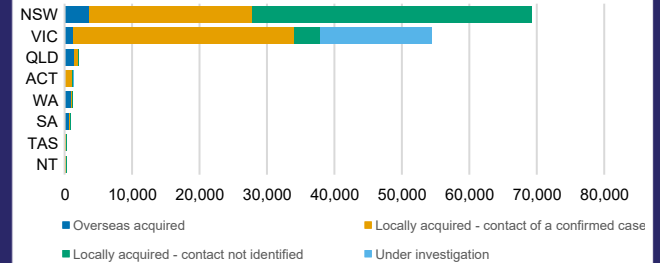


**CASES (DEATHS) BY STATE AND TERRITORIES**



**CASES BY SOURCE OF INFECTION**

Australia (% of all confirmed cases)



**PUBLIC HEALTH RESPONSE MEASURE**

Proportion of total cases under investigation

