



**CURRENT STATUS OF CONFIRMED CASES**



**293**



ACT	NSW	NT	QLD	SA	TAS	VIC	WA
6	159	0	0	0	0	126	2

**1,446**



ACT	NSW	NT	QLD	SA	TAS	VIC	WA
15	794	5	19	0	0	609	4

**39,757,533**



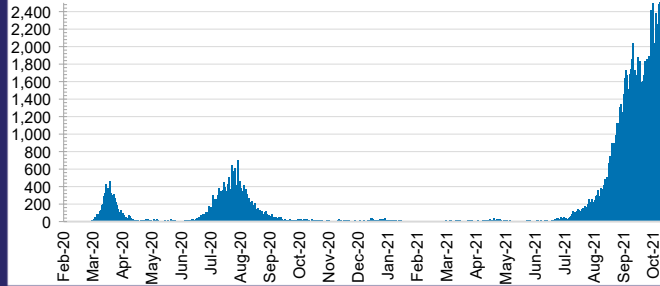
**0.3% POSITIVE**

ACT	NSW	NT	QLD
510,226	18,060,080	402,581	4,498,192
POSITIVE	POSITIVE	POSITIVE	POSITIVE
0.3%	0.4%	0.1%	0.0%

SA	TAS	VIC	WA
2,304,811	369,879	11,816,694	1,795,070
POSITIVE	POSITIVE	POSITIVE	POSITIVE
0.0%	0.1%	0.4%	0.1%

**DAILY NUMBER OF REPORTED CASES**

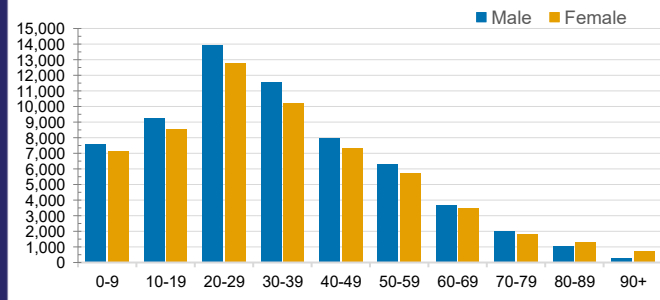


**CASES IN AGED CARE SERVICES**

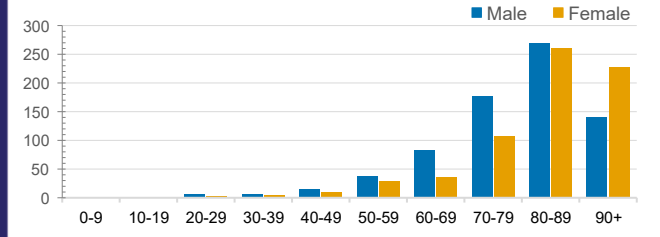
Confirmed Cases	Australia	ACT	NSW	NT	QLD	SA	TAS	VIC	WA
Residential Care Recipients	2498 [1417] (744)	0	426 [81] (70)	0	1 (1)	0	1 (1)	2055 [1336] (667)	0
In Home Care Recipients	110 [73] (10)	0	33 [13] (2)	0	8 [8]	1 [1]	5 [3] (2)	62 [48] (5)	1 (1)

Cases in care recipients [recovered] (deaths)

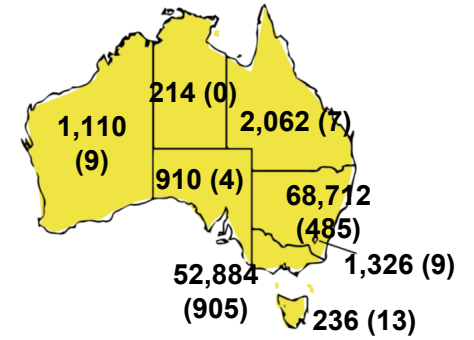
**CASES BY AGE GROUP AND SEX**



**DEATHS BY AGE GROUP AND SEX**

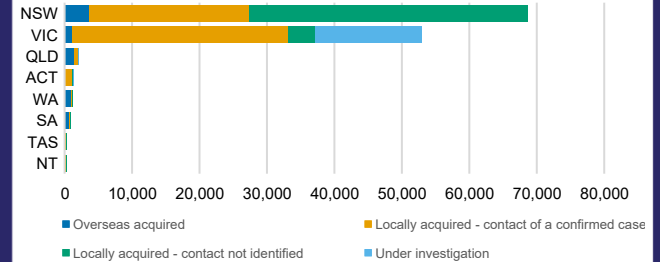


**CASES (DEATHS) BY STATE AND TERRITORIES**



**CASES BY SOURCE OF INFECTION**

Australia (% of all confirmed cases)



**PUBLIC HEALTH RESPONSE MEASURE**

Proportion of total cases under investigation

