



Australian Government
Operation COVID Shield

COVID-19 Vaccine Roll-out

08 September 2021

Data as at:
07 Sep 2021

Total vaccine doses



21,539,586 total vaccine doses administered nationally as at 07 September
+294,651 recorded in the last 24 hours



13,313,703

people have had at least one dose

64.6%

of people over the age of 16 have had at least one dose



8,186,949

people are fully vaccinated

39.7%

of people over the age of 16 are fully vaccinated

NSW
7,722,067
(+107,455 daily increase)

VIC
5,523,187
(+83,049 daily increase)

QLD
3,772,194
(+47,203 daily increase)

WA
1,932,916
(+25,294 daily increase)

TAS
485,017
(+4,275 daily increase)

SA
1,367,833
(+16,792 daily increase)

ACT
510,461
(+7,956 daily increase)

NT
225,911
(+2,627 daily increase)

*Administration state breakdown indicates state in which a vaccine was administered

**Overall dose count includes instances of more than two doses per person in a small number of cases.

Data as at:
07 Sep 2021

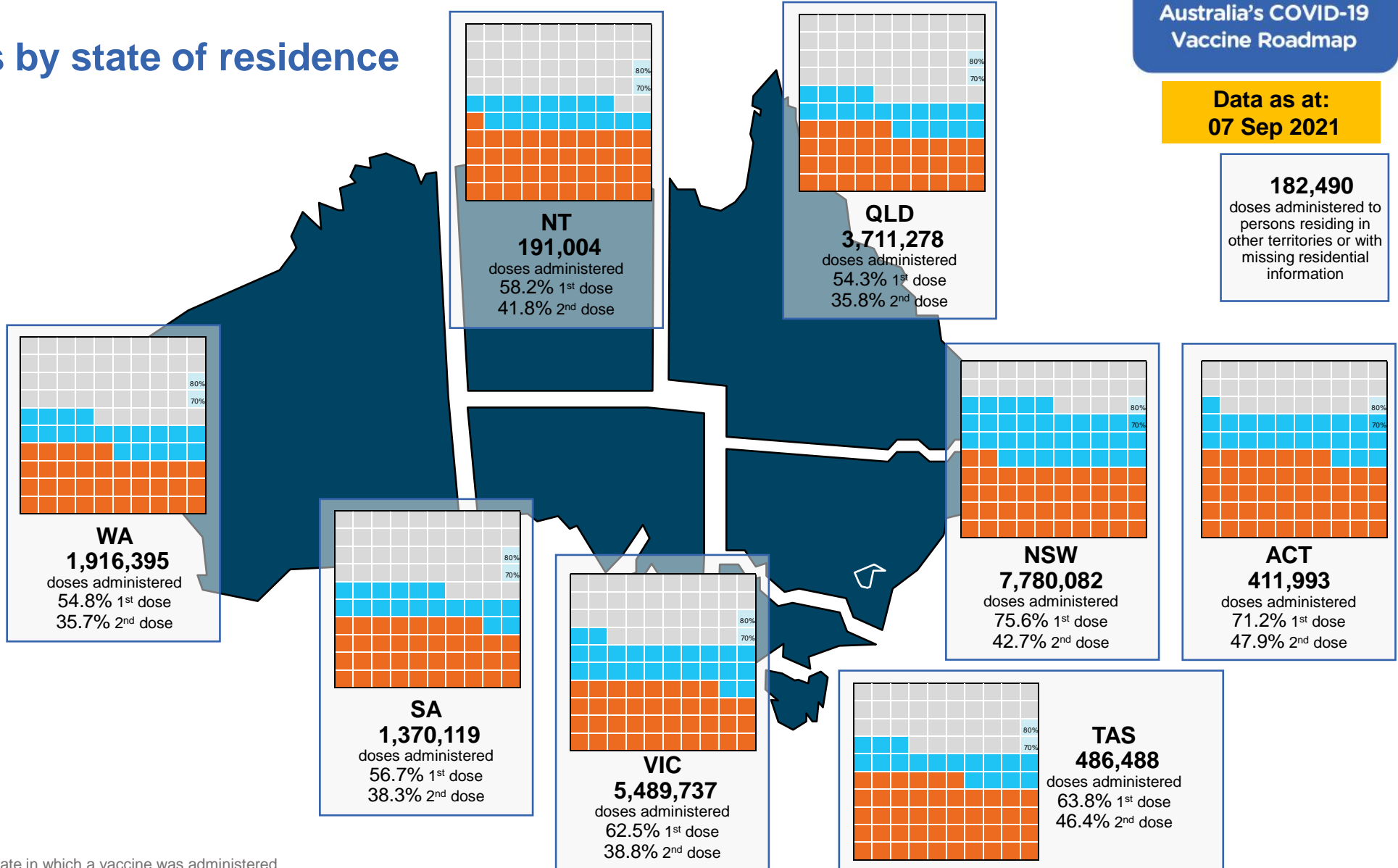
Vaccinations by state of residence

First doses

Age	Today	4 weeks ago	8 weeks ago
16+	64.6%	46.0%	34.3%
50+	82.1%	70.7%	58.7%
70+	89.6%	82.9%	75.5%

Fully vaccinated

Age	Today	4 weeks ago	8 weeks ago
16+	39.7%	24.3%	12.5%
50+	58.4%	34.9%	16.1%
70+	68.0%	50.0%	27.7%



*Residential state may differ from the state in which a vaccine was administered

Commonwealth and Jurisdiction vaccine doses administered

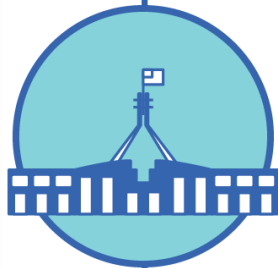
Data as at:
07 Sep 2021



21,539,586 total vaccine doses administered nationally as at 07 September
+ 294,651 recorded in the last 24 hours



9,095,419 doses administered by state and territory facilities
+ 116,965 recorded in the last 24 hours



12,444,167 doses administered by commonwealth facilities
+ 177,686 recorded in the last 24 hours

11,631,042 total vaccine doses administered in primary care settings
813,125 total vaccine doses administered in aged care and disability settings

NSW	Jurisdictions	Commonwealth
Cumulative	2,845,698	4,876,369
Daily increase	31,028	76,427

VIC	Jurisdictions	Commonwealth
Cumulative	2,618,309	2,904,878
Daily increase	37,676	45,373

QLD	Jurisdictions	Commonwealth
Cumulative	1,476,068	2,296,126
Daily increase	19,479	27,724

WA	Jurisdictions	Commonwealth
Cumulative	919,843	1,013,073
Daily increase	12,280	13,014

TAS	Jurisdictions	Commonwealth
Cumulative	259,762	225,255
Daily increase	2,905	1,370

SA	Jurisdictions	Commonwealth
Cumulative	604,407	763,426
Daily increase	7,970	8,822

ACT	Jurisdictions	Commonwealth
Cumulative	235,894	274,567
Daily increase	4,603	3,353

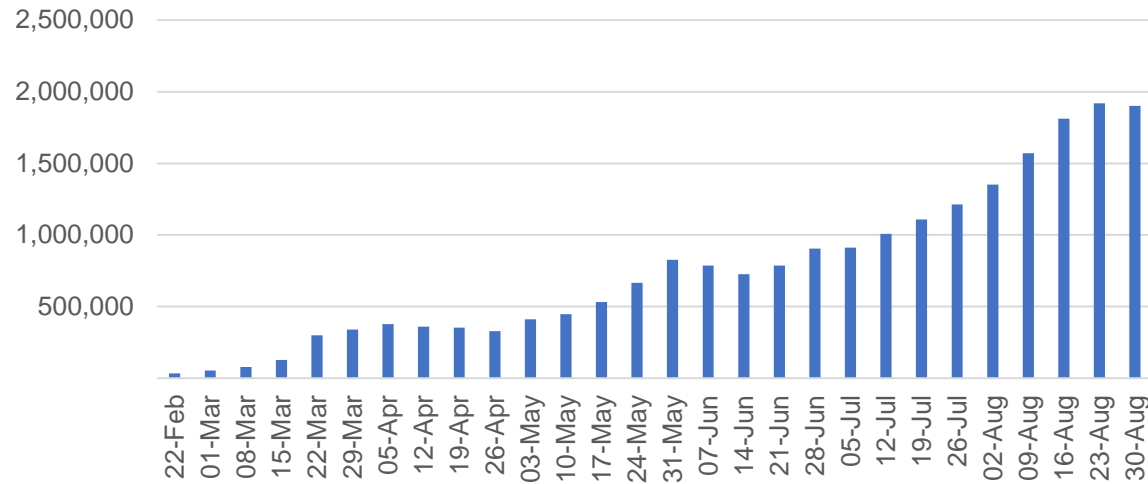
NT	Jurisdictions	Commonwealth
Cumulative	135,438	90,473
Daily increase	1,024	1,603

Vaccine milestone charts

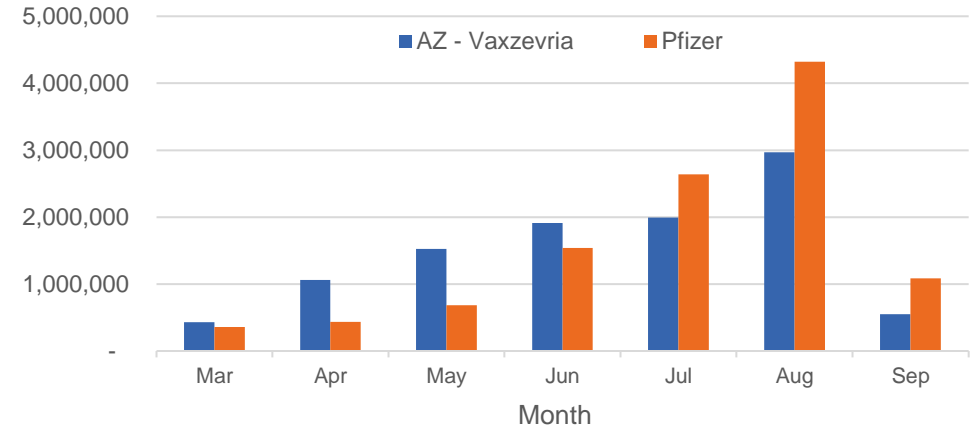
Data as at:
07 Sep 2021

Australia's COVID-19
Vaccine Roadmap

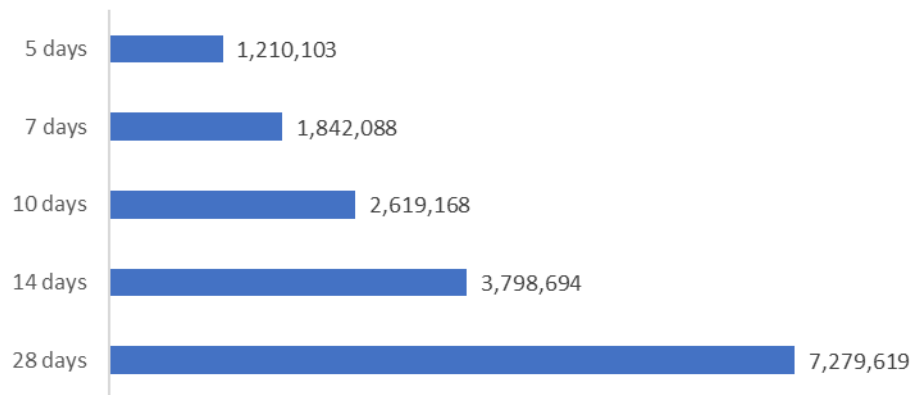
Jabs in arms by week



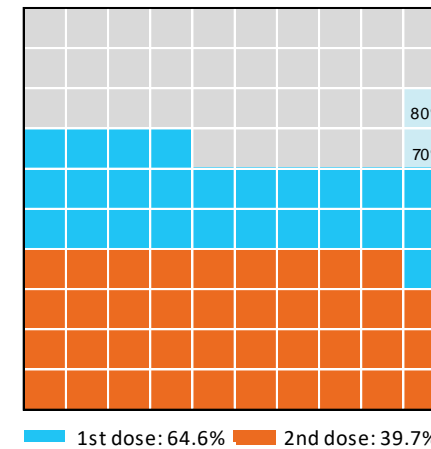
Doses by administration month and vaccine type



Doses reported



Eligible population percentage coverage



*Each square represents 1% of the national population. Squares are filled as milestones are achieved.

*Sourced from the Australian Immunisation Register.

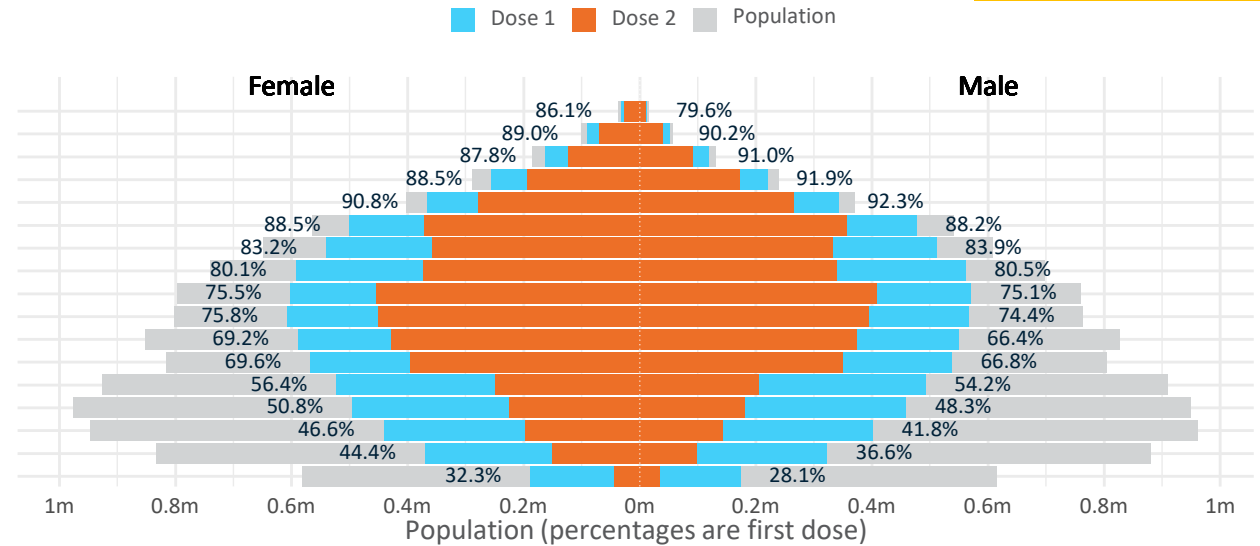
Data as at: 07 Sep 2021

Doses by age and sex

First and second doses by age and sex, using ABS age brackets

	AUS	16+	50+	70+
Dose 1	64.57% (13,313,703 doses / 20,619,959 people)	82.13% (7,186,545 doses / 8,749,703 people)	89.62% (2,630,037 doses / 2,934,706 people)	
Dose 2	39.70% (8,186,949 doses / 20,619,959 people)	58.37% (5,107,419 doses / 8,749,703 people)	68.02% (1,996,249 doses / 2,934,706 people)	

Age	Dose 1	Dose 2
95+	44,605 (84.3%)	35,181 (66.5%)
90-94	141,815 (89.5%)	109,511 (69.1%)
85-89	281,936 (89.2%)	214,203 (67.7%)
80-84	475,961 (90.1%)	365,005 (69.1%)
75-79	708,436 (91.6%)	544,431 (70.4%)
70-74	977,284 (88.4%)	727,918 (65.9%)
65-69	1,052,328 (83.6%)	691,342 (54.9%)
60-64	1,154,718 (80.4%)	713,179 (49.6%)
55-59	1,173,048 (75.4%)	861,943 (55.4%)
50-54	1,176,414 (75.2%)	844,706 (54.0%)
45-49	1,138,065 (67.9%)	801,291 (47.8%)
40-44	1,105,942 (68.3%)	745,971 (46.0%)
35-39	1,017,366 (55.4%)	454,010 (24.7%)
30-34	958,822 (49.8%)	407,300 (21.2%)
25-29	849,616 (44.6%)	341,578 (17.9%)
20-24	696,048 (40.6%)	250,249 (14.6%)
16-19	361,299 (30.2%)	79,131 (6.6%)



DOH (Australian Immunisation Register), ABS (Population)

	AUS	ACT	NSW	NT	QLD	SA	TAS	VIC	WA
16 and over - dose 1	13,313,703	244,812	4,961,216	110,972	2,232,361	817,112	280,941	3,382,014	1,159,894
16 and over - dose 2	8,186,949	164,796	2,802,011	79,596	1,472,850	551,438	204,332	2,100,054	754,041
16 and over - population	20,619,959*	344,037	6,565,651	190,571	4,112,707	1,440,400	440,172	5,407,574	2,114,978
16 and over % with dose 1	64.57%	71.16%	75.56%	58.23%	54.28%	56.73%	63.83%	62.54%	54.84%
16 and over % with dose 2	39.70%	47.90%	42.68%	41.77%	35.81%	38.28%	46.42%	38.84%	35.65%
50 and over - dose 1	7,186,545	122,139	2,447,734	44,517	1,345,053	517,812	179,124	1,819,160	667,187
50 and over - dose 2	5,107,419	92,578	1,691,736	33,249	952,371	357,575	136,207	1,336,234	480,956
50 and over - population	8,749,703	127,802	2,807,793	62,280	1,758,855	674,384	220,036	2,211,211	885,370
50 and over % with dose 1	82.13%	>95%	87.18%	71.48%	76.47%	76.78%	81.41%	82.27%	75.36%
50 and over % with dose 2	58.37%	72.44%	60.25%	53.39%	54.15%	53.02%	61.90%	60.43%	54.32%
70 and over - dose 1	2,630,037	40,611	888,873	9,719	504,504	207,167	69,503	652,808	237,997
70 and over - dose 2	1,996,249	32,435	667,016	7,559	385,238	149,990	54,976	503,869	181,805
70 and over - population	2,934,706	39,946	962,606	12,343	577,767	240,514	77,155	743,519	280,281
70 and over % with dose 1	89.62%	>95%	92.34%	78.74%	87.32%	86.14%	90.08%	87.80%	84.91%
70 and over % with dose 2	68.02%	81.20%	69.29%	61.24%	66.68%	62.36%	71.25%	67.77%	64.87%

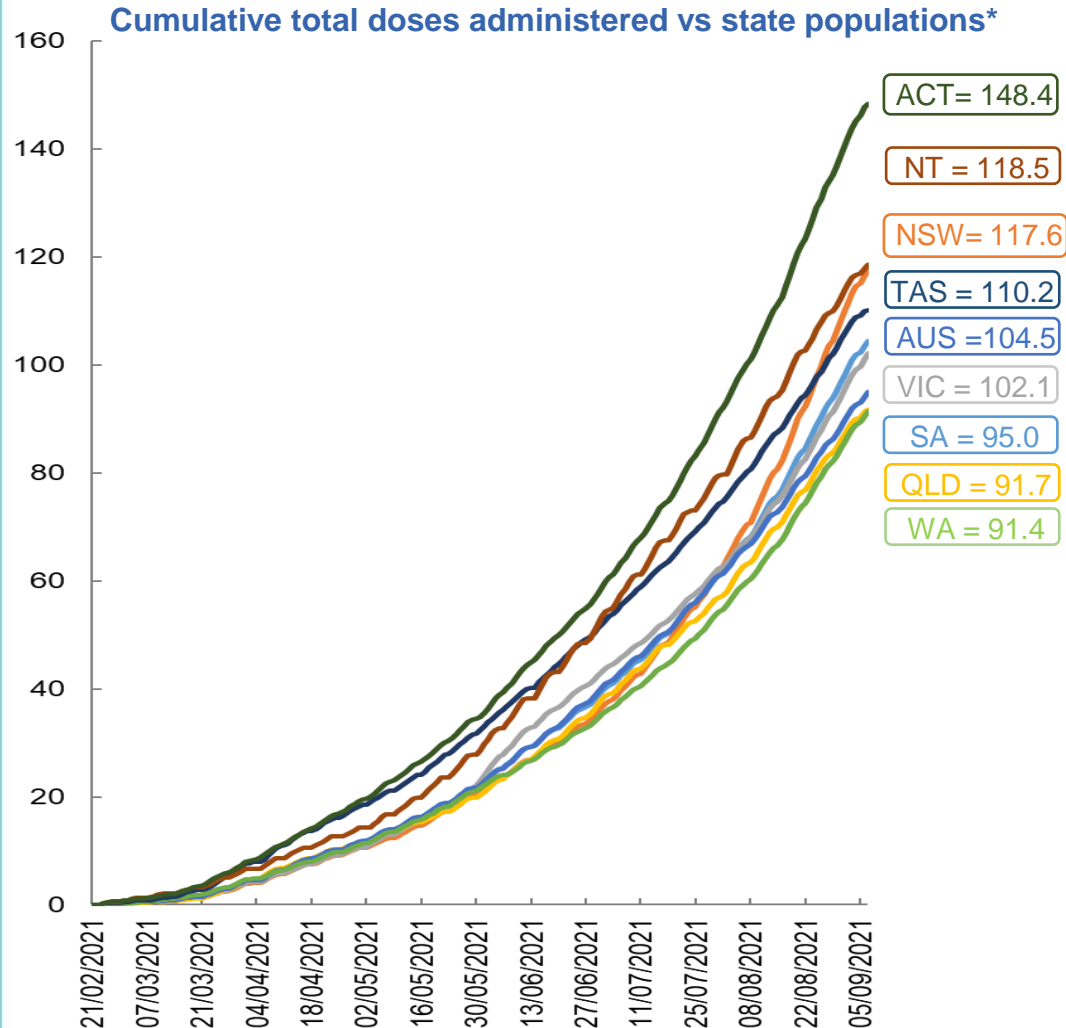
*National population will not equal sum of listed jurisdictions due to a small number of people counted in national population residing in some 'other' territories

Doses sourced from Australian Immunisation Register, population from ABS ERP June 2020

Vaccinations by location

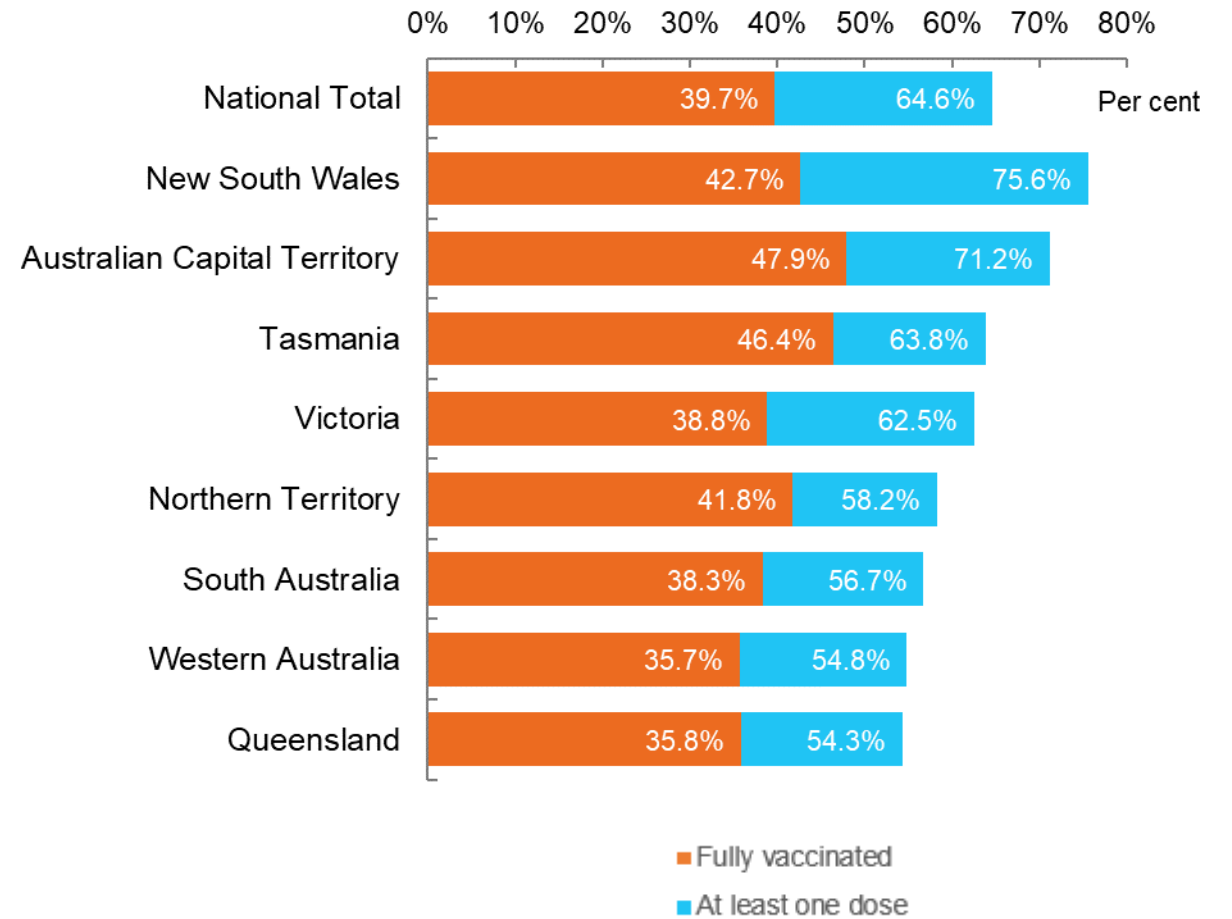
Data as at:
07 Sep 2021

Australia's COVID-19
Vaccine Roadmap



*Not an indication of percentage vaccinated, numbers will exceed 100 due to multiple doses required per person of the population

First and Second Doses by state of residence



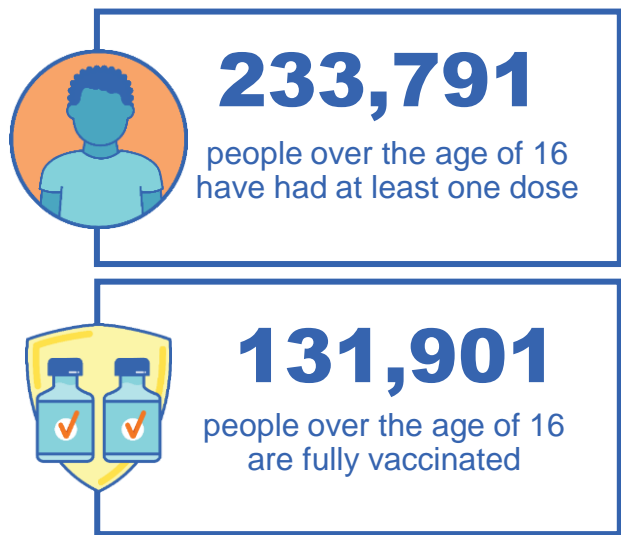
Aboriginal and Torres Strait Islander peoples

Number of people vaccinated

Data as at:
05 Sep 2021
Updated weekly
Data reconciliation underway

166 Aboriginal community controlled health services (ACCHS)

0#	48	26	39	11	3	21	18
ACT	NSW	NT	QLD	SA	TAS	VIC	WA



6,114 people with at least one dose
2,845 people fully vaccinated

residing in other territories or with missing residential information
Source: Australian Immunisation Register

*Identifying as Aboriginal and Torres Strait Islander is optional and the estimated population may be under reported.
**Includes all Aboriginal and Torres Strait Islander peoples who have received a vaccination, not limited to those administered in an ACCHS setting
***Updated weekly.
#ACCHS in the ACT are currently operating as a Commonwealth Vaccine Clinics so not included to avoid double counting

Data as at:
07 Sep 2021

Commonwealth primary care



Primary care vaccine administration sites

5,378	137	166	3,092
GPs	CVCs	ACCHS	Pharmacies



11,631,042 total vaccine doses administered primary care settings as at 07 September
+ **168,336** recorded in the last 24 hours

Primary care vaccinations by provider type

	Doses administered	Daily increase	7 day increase
General Practice* includes other Commonwealth	11,205,240	150,637	865,607
Pharmacy	425,802	17,699	97,676



59,397 doses administered to persons residing in other territories or with missing residential information

*General practice includes Commonwealth Vaccination Clinics, Aboriginal Community Health Centres, Royal Flying Doctor Service and other Commonwealth vaccination facilities

Source: Australian Immunisation Register

Commonwealth aged care and disability doses administered

Data as at:
07 Sep 2021



813,125 (+ 9,350 last 24 hours)

Total vaccine doses administered in aged care and disability facilities as at 07 September

Number of doses administered as part of the Commonwealth aged and disability care rollout

NSW
374,632
(+6,356 daily increase)

VIC
158,851
(+1,216 daily increase)

QLD
120,603
(+795 daily increase)

WA
56,625
(+619 daily increase)

TAS
15,850
(+16 daily increase)

SA
50,416
(+205 daily increase)

ACT
9,644
(+33 daily increase)

NT
5,325
(+10 daily increase)

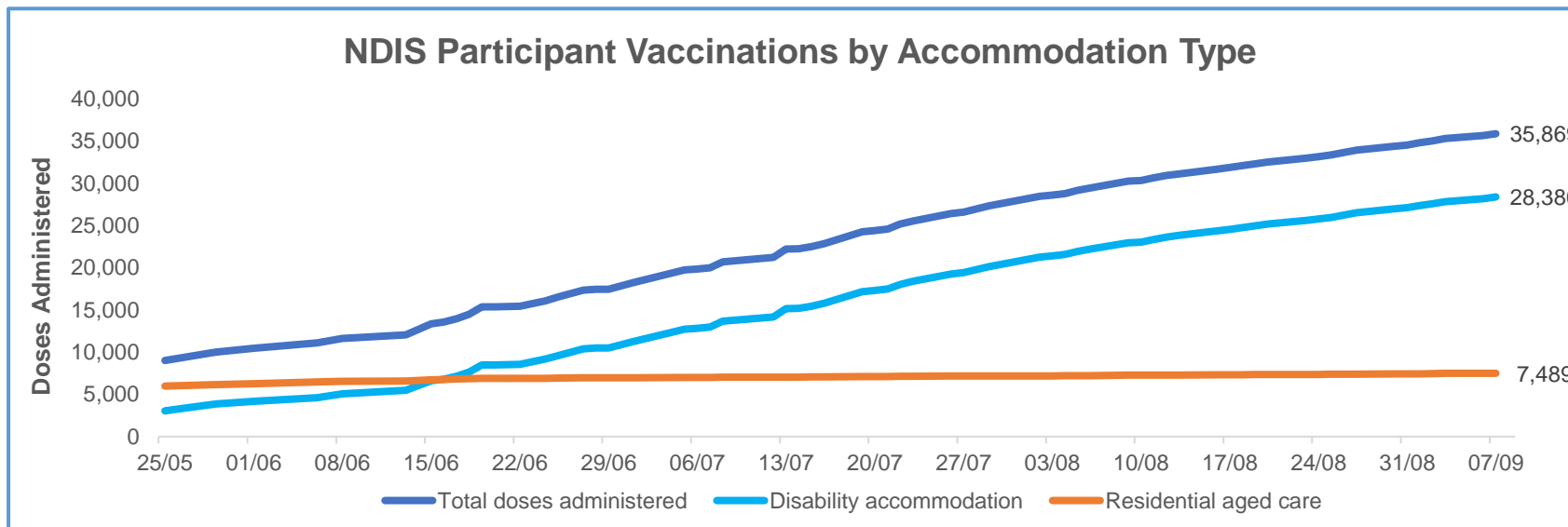
*Sourced from the Australian Immunisation Register. Includes all persons vaccinated at participating residential aged care, disability and related industry settings.
**State level breakdown indicates the residential location and may not align to the state in which the vaccination occurred.

21,179 doses administered to persons residing in other territories or with missing residential information

Data as at:
07 September 2021*

Vaccination rate of people with disability and the disability workforce

Phase 1a – People with disability living in shared accommodation



	Total people with at least one dose	People fully vaccinated	Total number of individuals in cohort	Total doses administered	% People with at least one dose	% People fully vaccinated
NDIS participants living in shared accommodation **	19,517	16,352	27,293	35,869	71.5%	59.9%
NDIS screened workers ***	117,125	84,181	177,377	201,306	66.0%	47.5%

* Updates are available Monday to Friday on participants, and bi-weekly for workers, numbers may be up to four days old.

** Shared accommodation means two or more people with disability living in shared residential accommodation and NDIS participants living in Residential Aged Care accommodation as per the eligibility criteria of Phase 1a.

*** Total number of workers within the NDIS Commission Worker Screening database who have ever been successfully screened and linked to an NDIS registered provider or participant.

Source: Linkage between National Disability Insurance Agency data, NDIS Quality and Safeguards Commission data and the Australian Immunisation Register.



Residential aged care vaccination rollout

Residential aged care facilities status

100% Commonwealth facilities visited (2,569 planned sites)

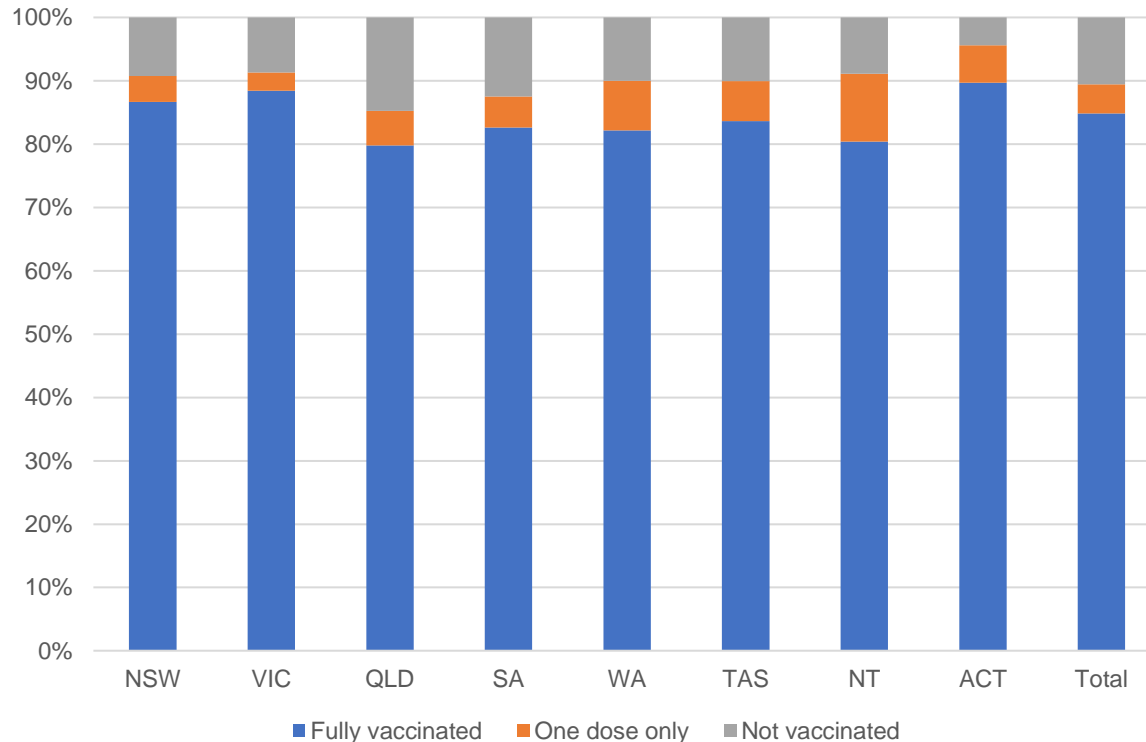
158,128 People fully vaccinated

89.5% Participation rate

Australia's COVID-19 Vaccine Roadmap

Data as at:
07 September 2021*

Aged care resident vaccinations



Aged care worker vaccinations

Jurisdictions	Total workers with at least one dose	Workers fully vaccinated	% Workers with at least one dose	% Workers fully vaccinated
NSW	74,747	58,892	90.5%	71.3%
VIC	66,836	53,081	90.4%	71.8%
QLD	42,972	30,666	85.8%	61.2%
SA	23,882	18,464	87.3%	67.5%
WA	20,688	14,154	85.5%	58.5%
TAS	6,672	5,212	84.1%	65.7%
NT	806	733	89.6%	81.4%
ACT	2765	2115	92.3%	70.6%
Total	239,368	183,317	88.6%	67.9%

Source: My Aged Care Portal staff vaccination progress

**Resident vaccination information is reported manually by service providers

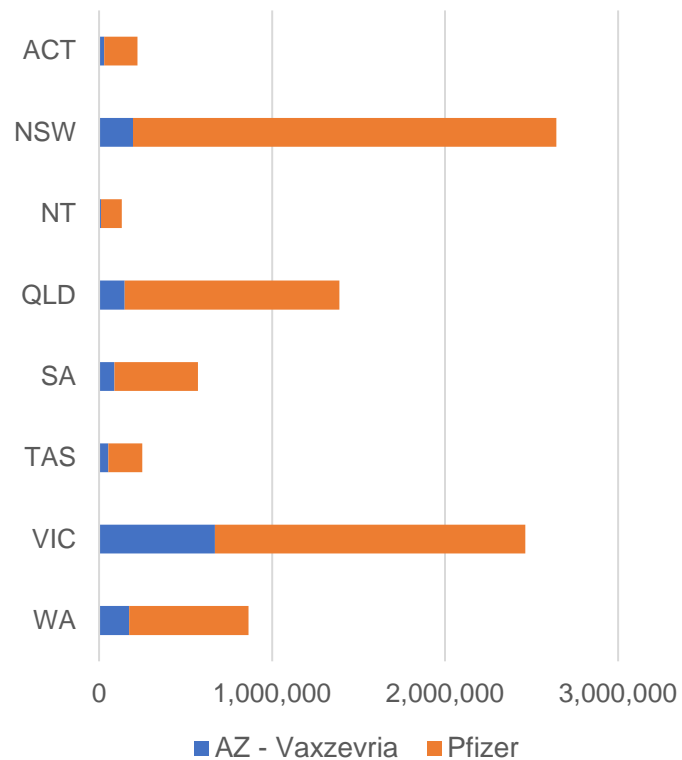
*Status updates are provided by facilities at least once per week. Reporting is updated Monday to Friday to encompass different facility updates being made on different days.

Data is sourced directly from Aged Care Service Providers and is not drawn or closely aligned with data from AIR due to inconsistencies and potential lags in uploading of records.

Data as at:
07 Sep 2021

Jurisdiction administered

Total vaccine doses administered in State and Territory clinics as at 07 September



9,095,419 total vaccine doses administered in State and Territory clinics as at 07 September
 + **116,965** recorded in the last 24 hours
 + **829,379** recorded in the last 7 days

NSW
2,845,698
 (+31,028 daily increase)

VIC
2,618,309
 (+37,676 daily increase)

QLD
1,476,068
 (+19,479 daily increase)

WA
919,843
 (+12,280 daily increase)

TAS
259,762
 (+2,905 daily increase)

SA
604,407
 (+7,970 daily increase)

ACT
235,894
 (+4,603 daily increase)

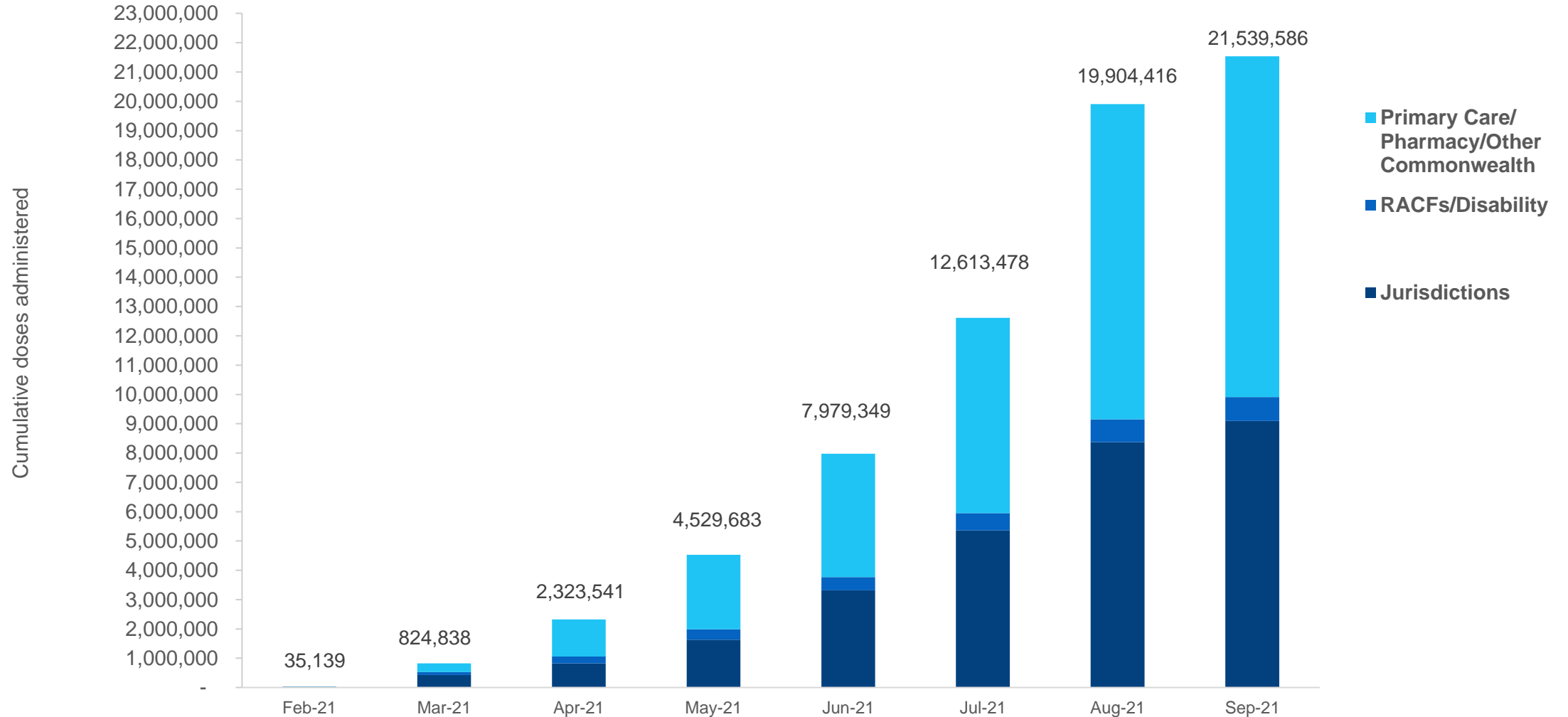
NT
135,438
 (+1,024 daily increase)

*Sourced from the Australian Immunisation Register and self-reported data. Numbers are calculated as difference in daily cumulative reported numbers to allow for historical corrections in all self-reported data sources.

Source: Australian Immunisation Register

Cumulative doses administered by channel

Data as at:
07 Sep 2021



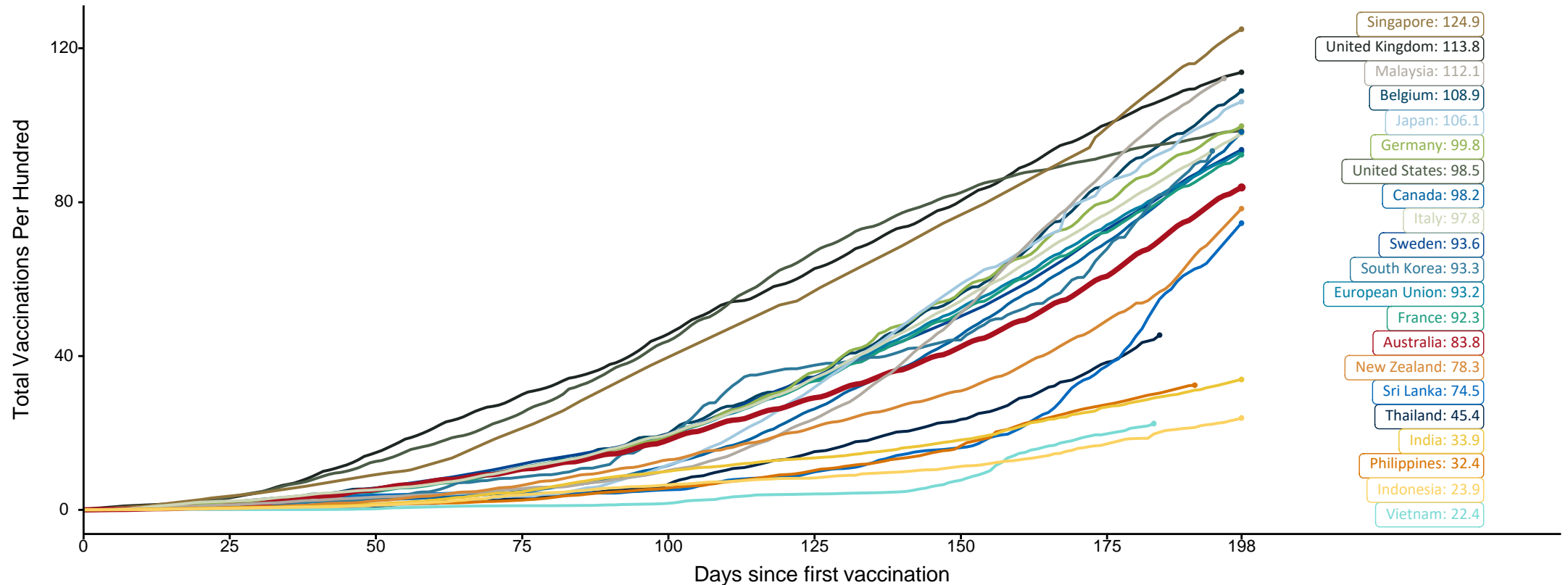
Source: Australian Immunisation Register

Doses at equivalent stages of rollout (Day 198)

Data as at:
07 Sep 2021

The x-axis is truncated at the length of Australia's vaccination program. Countries with intermittent reporting have had their doses per 100 imputed to Australia's current stage of rollout. Israel excluded as it is beyond scale of the graph

Cumulative doses administered (07 Sep): **21,539,586**

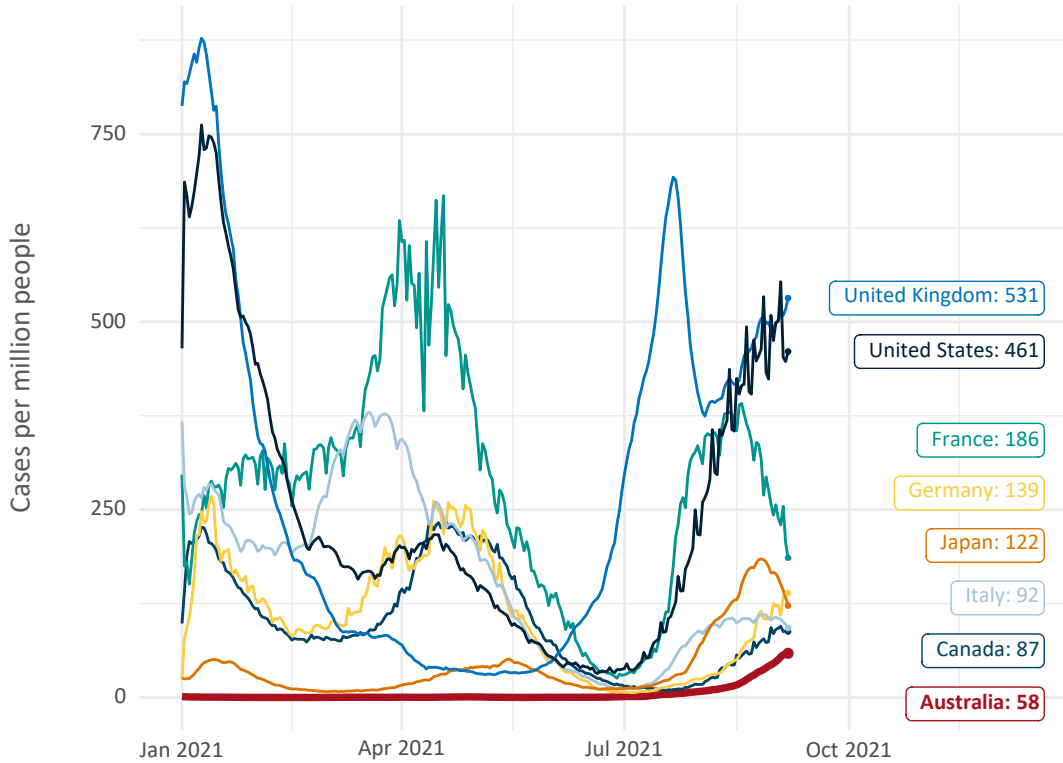


Source: Department of Health (Australia), Our World in Data (international)
Latest data: 07 September

Data as at: 07 Sep 2021

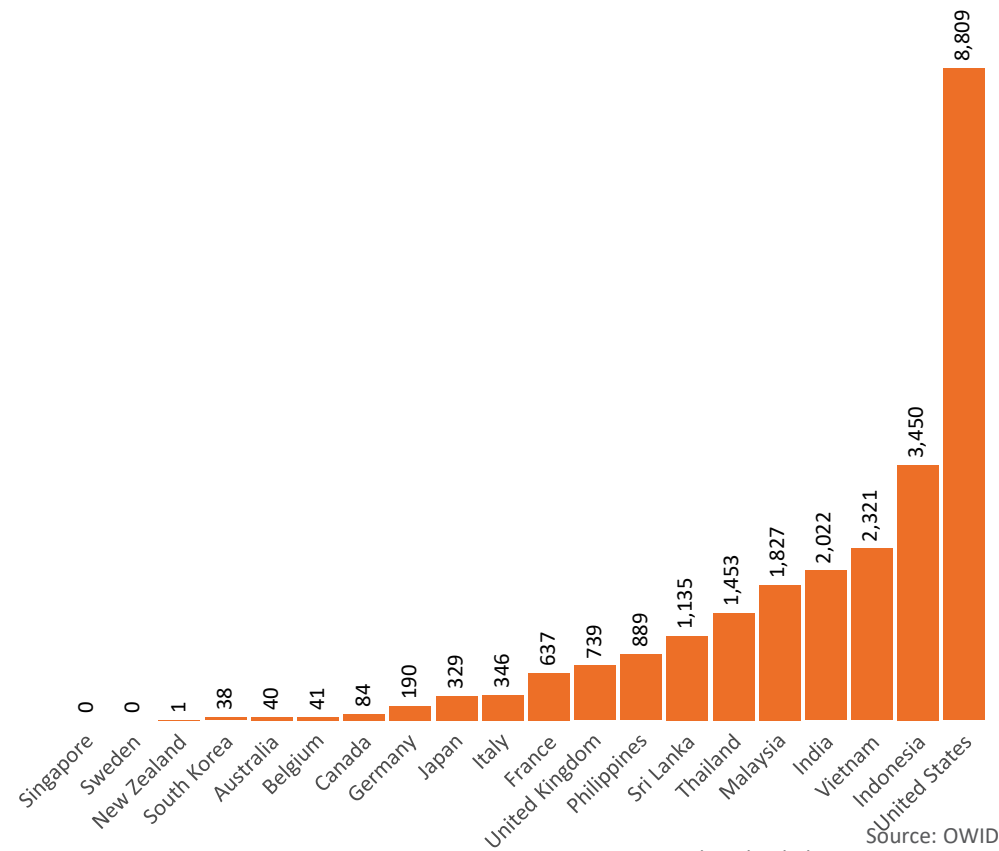
International data – COVID-19

New daily cases per million in 2021, Australia and G7 countries
Smoothed - 7 day average



Source: OWID
Data downloaded: 08 Sep 2021 08:36
Latest data: 06 Sep 2021


COVID-19 deaths in past 7 days - Australia and select countries



Source: OWID
Data downloaded: 08 Sep 2021 08:36
Latest data: 06 Sep 2021

Data as at midnight:
7 Sep 2021

Pandemic Response Payments



1.98 million
People have received at least one COVID Disaster Payment (including ISP200)

\$6.20 billion
Paid Out as at 7 Sep 2021

3.26 million
Claims granted across three different payments



93%
of Claims Received Digitally



COVID Disaster Payment: 3.23 million claims received - 1.83 million individuals paid a total of \$6.02 billion.

\$200 Income Support Payment: 189,000 claims received - 148,000 individuals paid a total of \$110.50 million.

Pandemic Leave Disaster Payment: 54,000 claims received - 46,000 individuals paid a total of \$73.15 million.

COVID-19 DISASTER PAYMENTS



COVID Disaster Payment
assisting during a lockdown event in a Commonwealth hotspot.

Income Support Payment \$200
for income support recipients who lost at least 8 hours of work.

Pandemic Leave Disaster Payment
for those who have to self-isolate, quarantine or care.

For more information visit:
servicesaustralia.gov.au

New South Wales
Active lockdown since 24 Jun

1.00m people have received at least one COVID Disaster Payment.

\$4.27b paid out as at 7 Sep 2021.

\$643m paid in initial and reoccurring payments in the week ending 5 Sep 2021.

Cumulative payments made by State since activation on 1 Jul 2021.

Victoria
Active lockdown (#6) since 6 Aug

480,000 people have received at least one COVID Disaster Payment.

\$1.33b paid out as at 7 Sep 2021.

\$338m paid in initial and reoccurring payments in the week ending 5 Sep 2021.

Cumulative payments made by State since activation on 8 Jun 2021.

Australian Capital Territory
Active lockdown since 12 Aug

57,000 people have received at least one COVID Disaster Payment.

\$108.1m paid out as at 7 Sep 2021.

\$42m paid in initial and reoccurring payments in the week ending 5 Sep 2021.

Cumulative payments made by State since activation on 20 Aug 2021.

Northern Territory
Lockdown from 18 – 20 Jul
Claiming period ends 13 Sep

5,051 people have received at least one COVID Disaster Payment.

\$3.28m paid out as at 7 Sep 2021.

\$1.14m paid in initial payments in the week ending 5 Sep 2021.

Cumulative payments made by State since activation on 25 Aug 2021.

Queensland
Lockdown from 31 Jul – 11 Aug
Claiming period ended 28 Aug

196,000 people have received at least one COVID Disaster Payment.

\$252.3m paid out as at 7 Sep 2021.

\$4m paid in initial and reoccurring payments in the week ending 5 Sep 2021.

Cumulative payments made by State since activation on 7 Aug 2021.

South Australia
Lockdown from 21 – 27 Jul
Claiming period ended 17 Aug

86,000 people have received at least one COVID Disaster Payment.

\$48.2m paid out as at 7 Sep 2021.

\$27,000 paid in initial payments in the week ending 5 Sep 2021.

Cumulative payments made by State since activation on 28 Jul 2021.