



Australian Government
Operation COVID Shield

COVID-19 Vaccine Roll-out

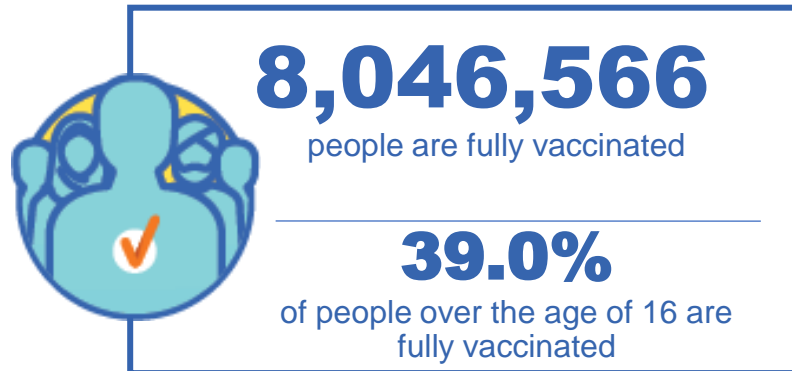
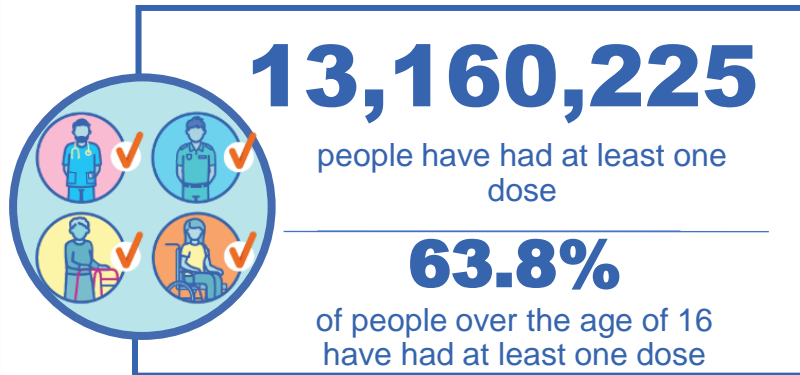
07 September 2021

Data as at:
06 Sep 2021

Total vaccine doses



21,244,935 total vaccine doses administered nationally as at 06 September
+258,946 recorded in the last 24 hours



*Administration state breakdown indicates state in which a vaccine was administered
**Overall dose count includes instances of more than two doses per person in a small number of cases.

Source: Australian Immunisation Register

Data as at:
06 Sep 2021

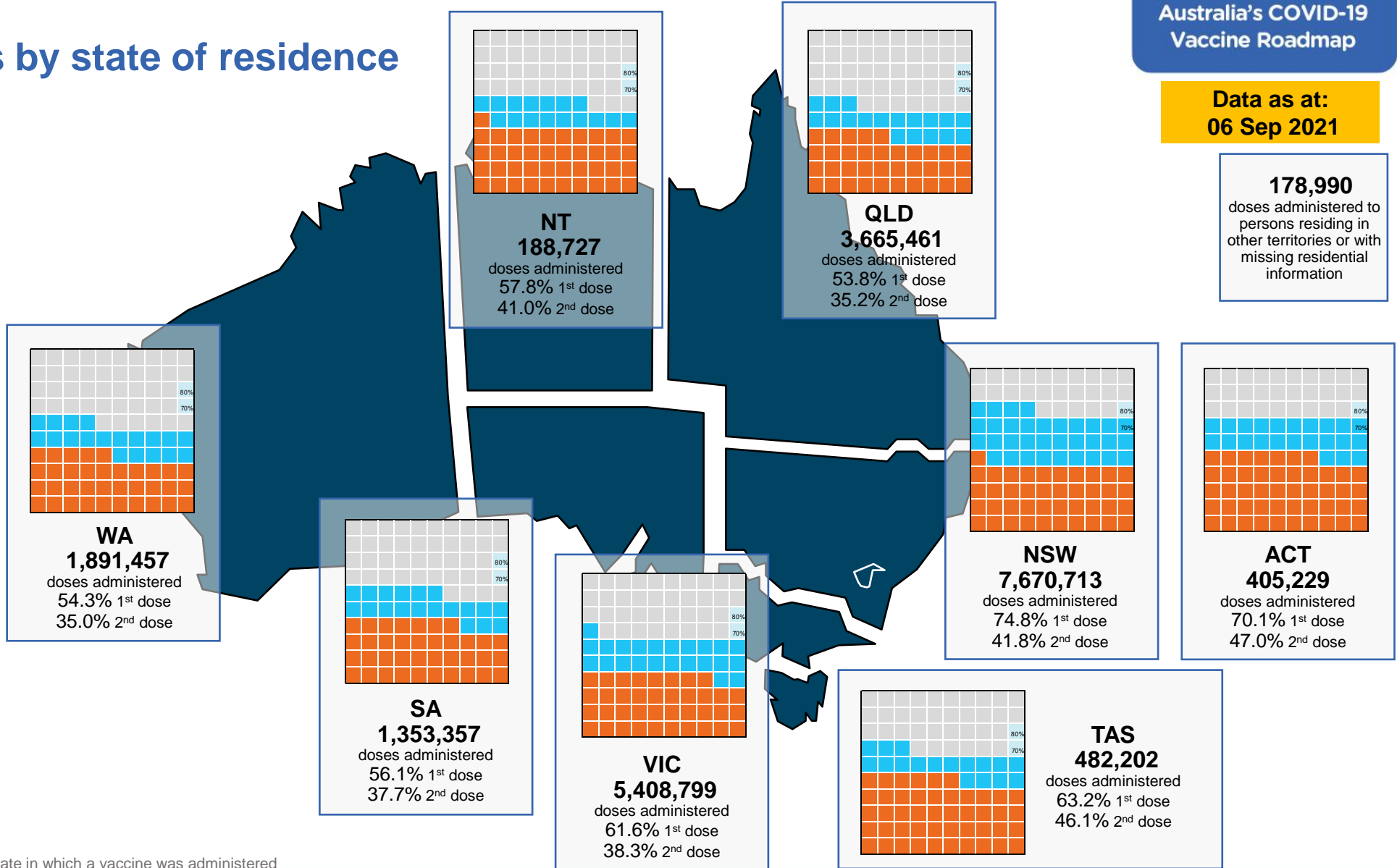
Vaccinations by state of residence

First doses

Age Today	4 weeks ago	8 weeks ago
16+	63.8%	45.4%
50+	81.7%	70.1%
70+	89.3%	82.5%

Fully vaccinated

Age Today	4 weeks ago	8 weeks ago
16+	39.0%	23.6%
50+	57.5%	33.8%
70+	67.3%	49.0%



*Residential state may differ from the state in which a vaccine was administered

Commonwealth and Jurisdiction vaccine doses administered

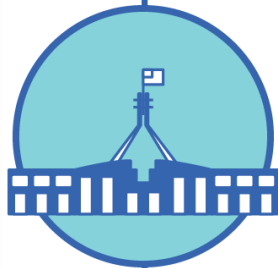
Data as at:
06 Sep 2021



21,244,935 total vaccine doses administered nationally as at 06 September
+ 258,946 recorded in the last 24 hours



8,978,454 doses administered by state and territory facilities
+ 91,887 recorded in the last 24 hours



12,266,481 doses administered by commonwealth facilities
+ 167,059 recorded in the last 24 hours

11,462,706 total vaccine doses administered in primary care settings
803,775 total vaccine doses administered in aged care and disability settings

NSW	Jurisdictions	Commonwealth
Cumulative	2,814,670	4,799,942
Daily increase	26,941	70,214

VIC	Jurisdictions	Commonwealth
Cumulative	2,580,633	2,859,505
Daily increase	31,013	42,547

QLD	Jurisdictions	Commonwealth
Cumulative	1,456,589	2,268,402
Daily increase	10,284	26,693

WA	Jurisdictions	Commonwealth
Cumulative	907,563	1,000,059
Daily increase	11,211	12,883

TAS	Jurisdictions	Commonwealth
Cumulative	256,857	223,885
Daily increase	1,320	1,882

SA	Jurisdictions	Commonwealth
Cumulative	596,437	754,604
Daily increase	7,211	7,071

ACT	Jurisdictions	Commonwealth
Cumulative	231,291	271,214
Daily increase	2,800	5,050

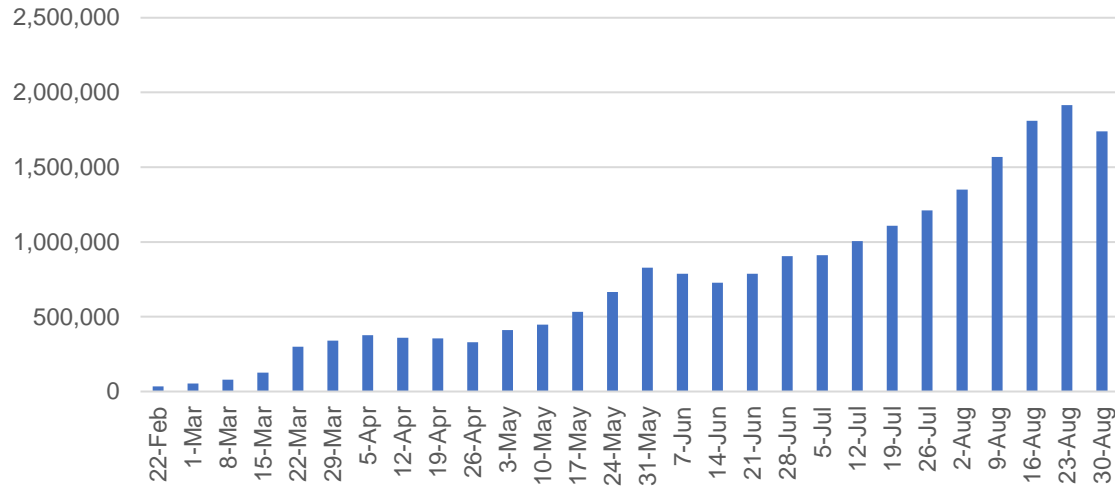
NT	Jurisdictions	Commonwealth
Cumulative	134,414	88,870
Daily increase	1,107	719

Vaccine milestone charts

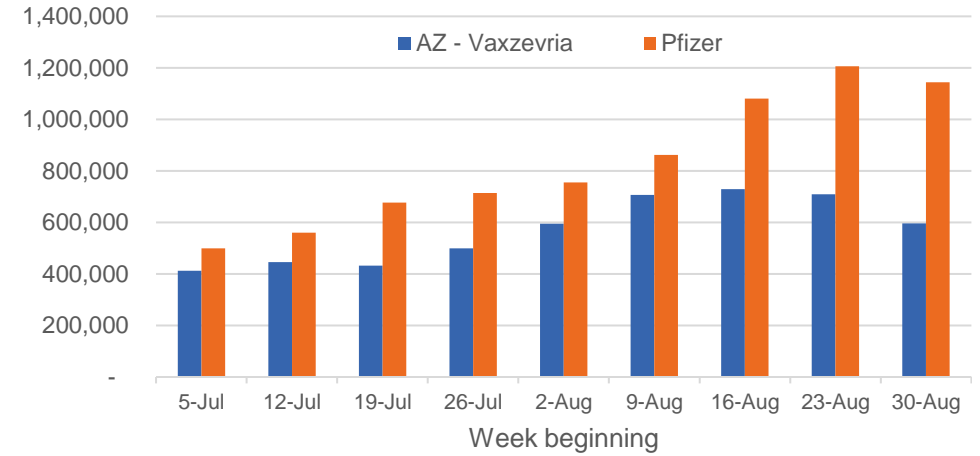
Data as at:
06 Sep 2021

Australia's COVID-19
Vaccine Roadmap

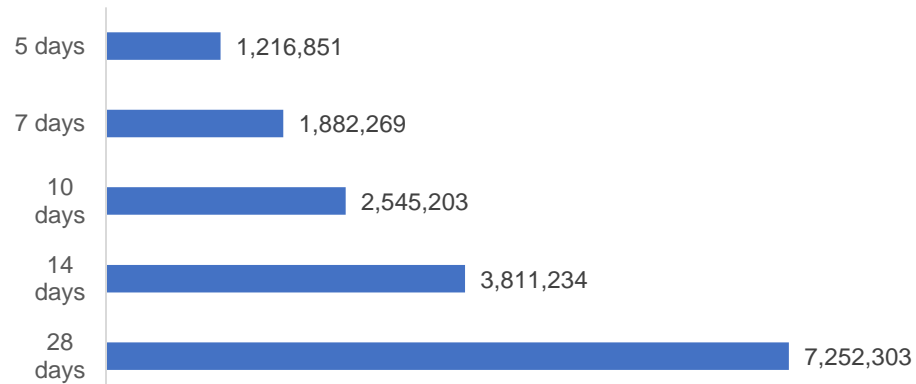
Jabs in arms by week



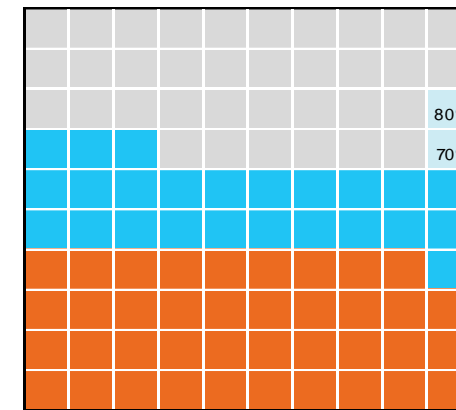
Doses by administration week and vaccine type



Doses reported



Eligible population percentage coverage



1st dose: 63.8% 2nd dose: 39.0%

*Each square represents 1% of the national population. Squares are filled as milestones are achieved.

*Source

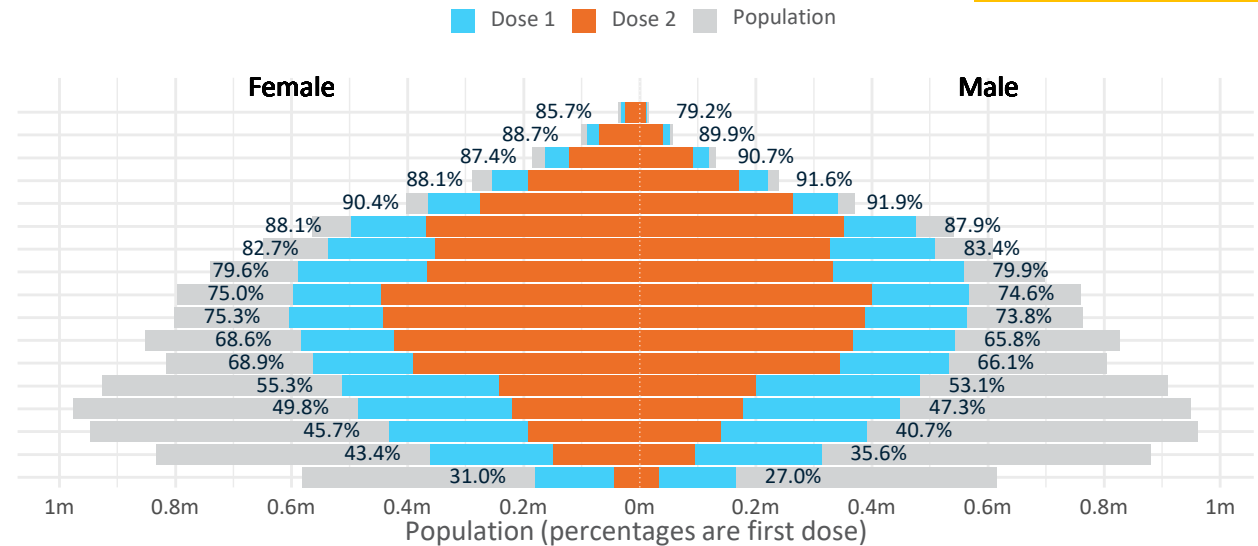
Data as at: 06 Sep 2021

Doses by age and sex

First and second doses by age and sex, using ABS age brackets

	AUS	16+	50+	70+
Dose 1	63.82% (13,160,225 doses / 20,619,959 people)	81.67% (7,146,172 doses / 8,749,703 people)	89.28% (2,620,136 doses / 2,934,706 people)	
Dose 2	39.02% (8,046,566 doses / 20,619,959 people)	57.46% (5,027,968 doses / 8,749,703 people)	67.28% (1,974,465 doses / 2,934,706 people)	

Age	Dose 1	Dose 2
95+	44,426 (84.0%)	34,940 (66.0%)
90-94	141,353 (89.2%)	108,558 (68.5%)
85-89	280,889 (88.8%)	212,077 (67.1%)
80-84	474,302 (89.8%)	361,213 (68.4%)
75-79	705,786 (91.2%)	538,476 (69.6%)
70-74	973,380 (88.1%)	719,201 (65.1%)
65-69	1,046,517 (83.2%)	678,532 (53.9%)
60-64	1,147,220 (79.9%)	699,041 (48.7%)
55-59	1,164,992 (74.9%)	846,543 (54.4%)
50-54	1,167,307 (74.6%)	829,387 (53.0%)
45-49	1,128,096 (67.3%)	790,320 (47.1%)
40-44	1,095,309 (67.6%)	734,738 (45.3%)
35-39	997,500 (54.4%)	442,707 (24.1%)
30-34	939,009 (48.8%)	397,144 (20.6%)
25-29	829,778 (43.5%)	333,567 (17.5%)
20-24	678,270 (39.6%)	243,744 (14.2%)
16-19	346,091 (28.9%)	76,378 (6.4%)



DOH (Australian Immunisation Register), ABS (Population)

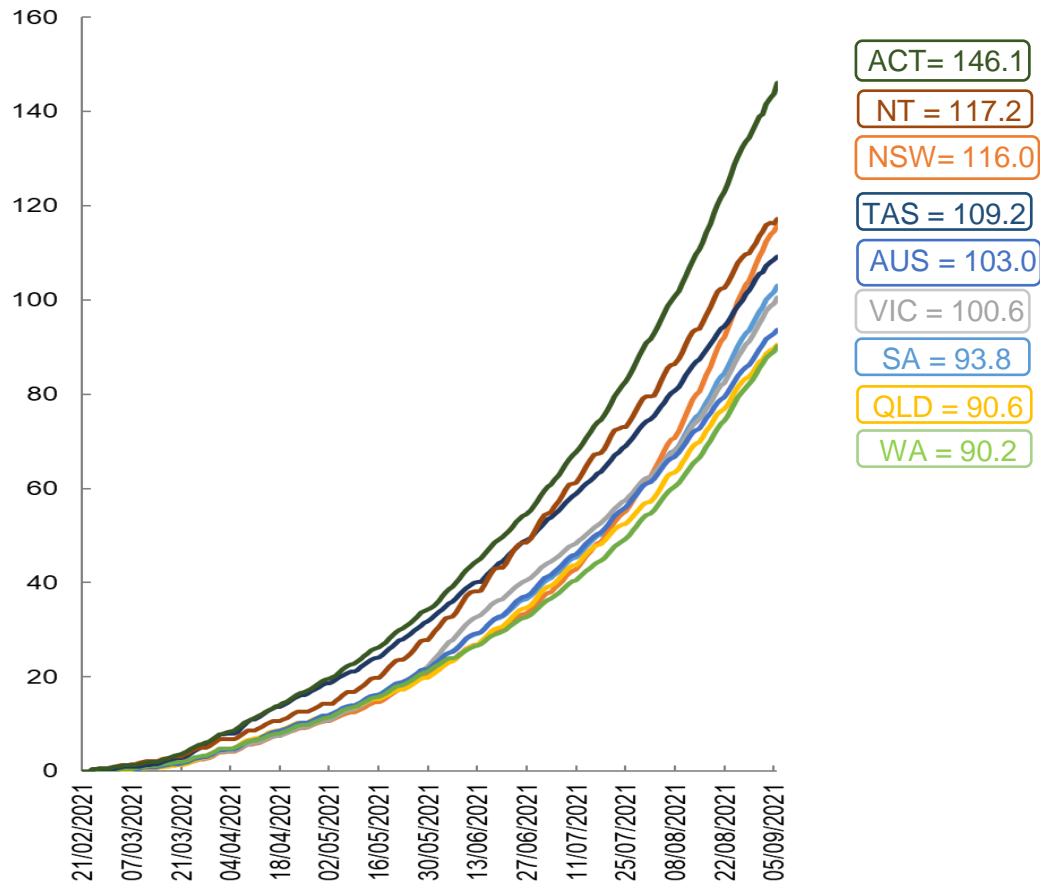
	AUS	ACT	NSW	NT	QLD	SA	TAS	VIC	WA
16 and over - dose 1	13,160,225	241,314	4,910,785	110,070	2,211,166	808,484	278,277	3,330,300	1,148,131
16 and over - dose 2	8,046,566	161,561	2,743,498	78,225	1,448,334	543,316	202,714	2,070,979	740,925
16 and over - population	20,619,959*	344,037	6,565,651	190,571	4,112,707	1,440,400	440,172	5,407,574	2,114,978
16 and over % with dose 1	63.82%	70.14%	74.80%	57.76%	53.76%	56.13%	63.22%	61.59%	54.29%
16 and over % with dose 2	39.02%	46.96%	41.79%	41.05%	35.22%	37.72%	46.05%	38.30%	35.03%
50 and over - dose 1	7,146,172	121,576	2,432,936	44,277	1,338,184	515,095	178,316	1,808,815	663,406
50 and over - dose 2	5,027,968	90,797	1,663,760	32,681	938,329	352,152	135,288	1,314,847	473,901
50 and over - population	8,749,703	127,802	2,807,793	62,280	1,758,855	674,384	220,036	2,211,211	885,370
50 and over % with dose 1	81.67%	>95%	86.65%	71.09%	76.08%	76.38%	81.04%	81.80%	74.93%
50 and over % with dose 2	57.46%	71.05%	59.26%	52.47%	53.35%	52.22%	61.48%	59.46%	53.53%
70 and over - dose 1	2,620,136	40,481	885,320	9,675	503,018	206,460	69,350	649,843	237,181
70 and over - dose 2	1,974,465	32,046	659,020	7,489	381,675	148,475	54,785	497,690	180,010
70 and over - population	2,934,706	39,946	962,606	12,343	577,767	240,514	77,155	743,519	280,281
70 and over % with dose 1	89.28%	>95%	91.97%	78.38%	87.06%	85.84%	89.88%	87.40%	84.62%
70 and over % with dose 2	67.28%	80.22%	68.46%	60.67%	66.06%	61.73%	71.01%	66.94%	64.22%

*National population will not equal sum of listed jurisdictions due to a small number of people counted in national population residing in some 'other' territories

Doses sourced from Australian Immunisation Register, population from ABS ERP June 2020

Vaccinations by location

Cumulative total doses administered vs state populations*

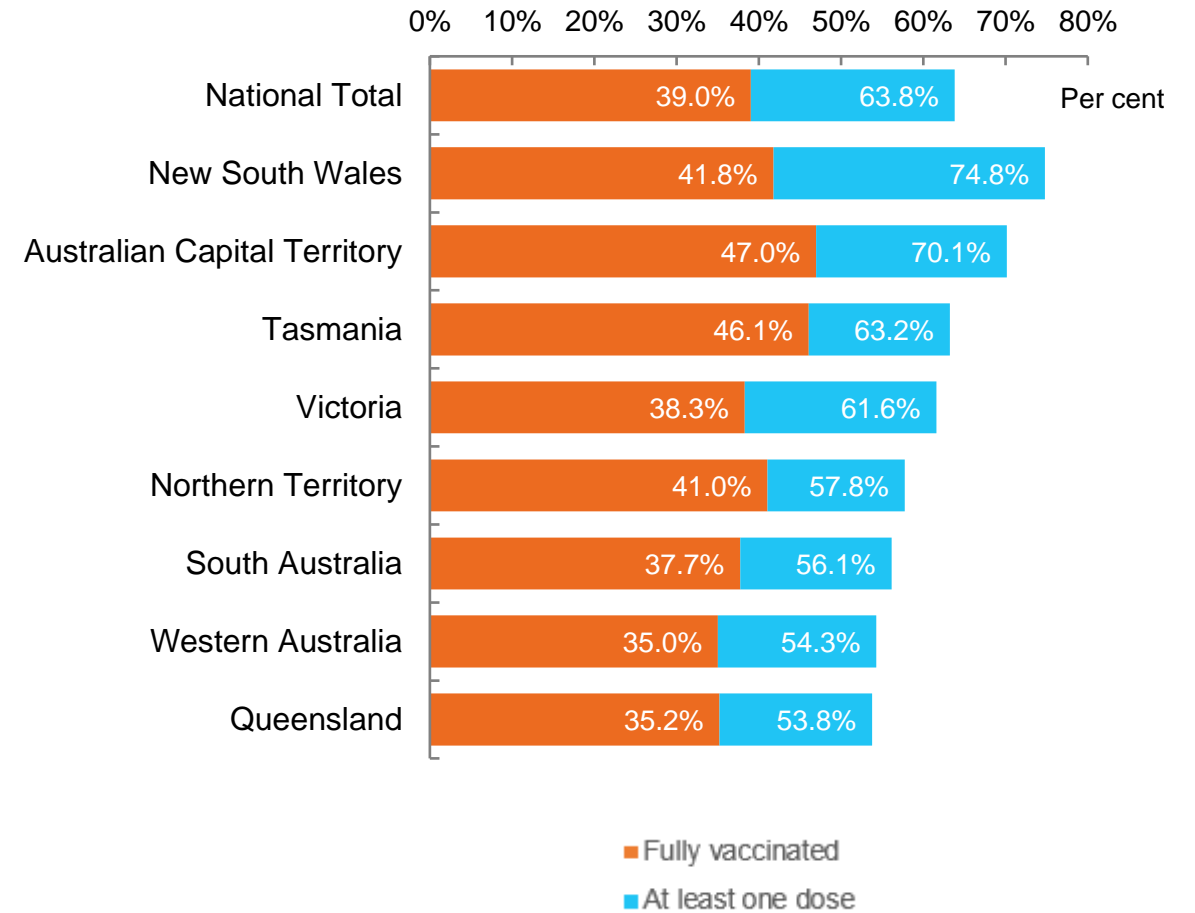


*Not an indication of percentage vaccinated, numbers will exceed 100 due to multiple doses required per person of the population

Data as at:
06 Sep 2021

Australia's COVID-19
Vaccine Roadmap

First and Second Doses by state of residence



Aboriginal and Torres Strait Islander peoples

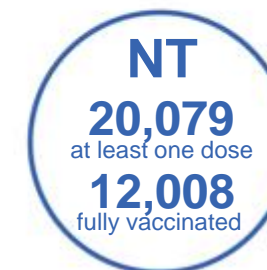
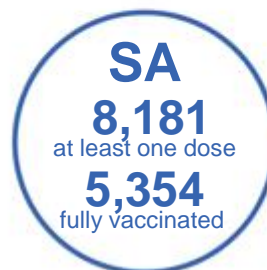
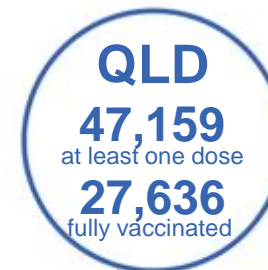
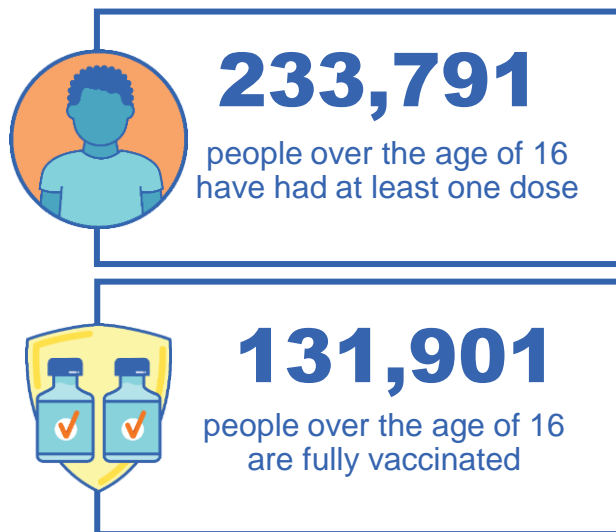
Number of people vaccinated

Data as at:
05 Sep 2021
Updated weekly
Data reconciliation underway

Australia's COVID-19
Vaccine Roadmap

166 Aboriginal community controlled health services (ACCHS)

0#	48	26	39	11	3	21	18
ACT	NSW	NT	QLD	SA	TAS	VIC	WA



6,114 people with at least one dose
2,845 people fully vaccinated

residing in other territories or with missing residential information

Source: Australian Immunisation Register

*Identifying as Aboriginal and Torres Strait Islander is optional and the estimated population may be under reported.

**Includes all Aboriginal and Torres Strait Islander peoples who have received a vaccination, not limited to those administered in an ACCHS setting

***Updated weekly.

#ACCHS in the ACT are currently operating as a Commonwealth Vaccine Clinics so not included to avoid double counting

Data as at:
06 Sep 2021

Commonwealth primary care



Primary care vaccine administration sites

5,378	137	166	3,092
GPs	CVCs	ACCHS	Pharmacies



11,462,706 total vaccine doses administered primary care settings as at 06 September
+ **164,387** recorded in the last 24 hours

Primary care vaccinations by provider type

	Doses administered	Daily increase	7 day increase
General Practice* includes other Commonwealth	11,054,603	146,473	903,396
Pharmacy	408,103	17,914	97,251

NSW
4,444,565
(+69,971 daily increase)

VIC
2,710,741
(+41,933 daily increase)

QLD
2,117,047
(+26,632 daily increase)

WA
944,781
(+12,495 daily increase)

TAS
212,191
(+1,993 daily increase)

SA
706,899
(+7,134 daily increase)

ACT
194,069
(+2,659 daily increase)

NT
74,003
(+753 daily increase)

58,410 doses administered to persons residing in other territories or with missing residential information

*General practice includes Commonwealth Vaccination Clinics, Aboriginal Community Health Centres, Royal Flying Doctor Service and other Commonwealth vaccination facilities

Source: Australian Immunisation Register

Data as at:
06 Sep 2021

Commonwealth aged care and disability doses administered

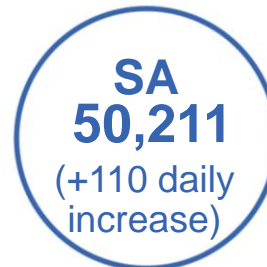
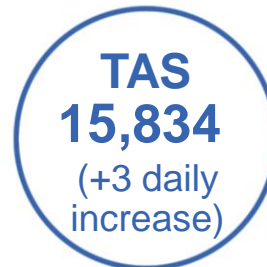
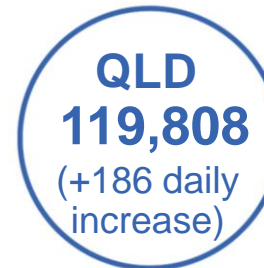


803,775

(+ 2,672 last 24 hours)

Total vaccine doses administered in aged care and disability facilities as at 06 September

Number of doses administered as part of the Commonwealth aged and disability care rollout



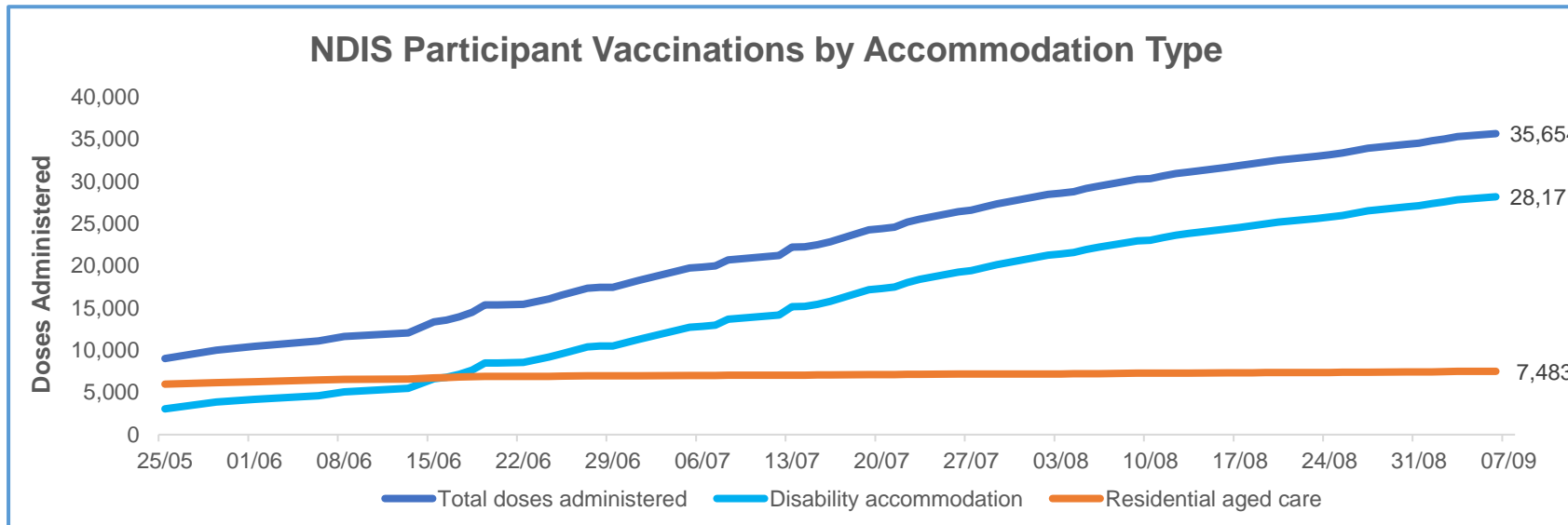
*Sourced from the Australian Immunisation Register. Includes all persons vaccinated at participating residential aged care, disability and related industry settings.
**State level breakdown indicates the residential location and may not align to the state in which the vaccination occurred.

21,079 doses administered to persons residing in other territories or with missing residential information

Data as at:
06 September 2021

Vaccination rate of people with disability and the disability workforce

Phase 1a – People with disability living in shared accommodation



	Total people with at least one dose	People fully vaccinated	Total number of individuals in cohort	Total doses administered	% People with at least one dose	% People fully vaccinated
NDIS participants living in shared accommodation *	19,435	16,219	27,293	35,654	71.2%	59.4%
NDIS screened workers **	117,125	84,181	177,377	201,306	66.0%	47.5%

* Shared accommodation means two or more people with disability living in shared residential accommodation and NDIS participants living in Residential Aged Care accommodation as per the eligibility criteria of Phase 1a.

** Total number of workers within the NDIS Commission Worker Screening database who have ever been successfully screened and linked to an NDIS registered provider or participant.

Source: Linkage between National Disability Insurance Agency data, NDIS Quality and Safeguards Commission data and the Australian Immunisation Register.

Residential aged care vaccination rollout

Residential aged care facilities status

100%

Commonwealth facilities visited (2,569 planned sites)

157,960

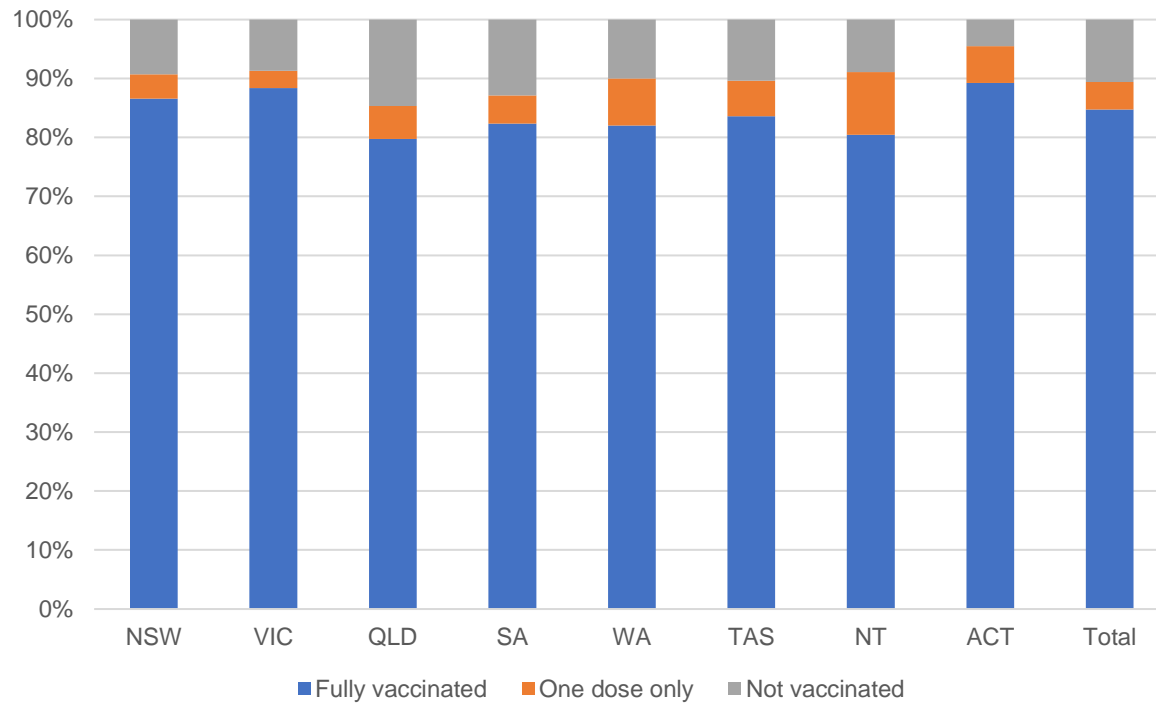
People fully vaccinated

89%

Participation rate

Data as at: 06 September 2021*

Aged care resident vaccinations**



Aged care worker vaccinations

Jurisdictions	Total workers with at least one dose	Workers fully vaccinated	% Workers with at least one dose	% Workers fully vaccinated
NSW	72,899	56,506	88.1%	68.3%
VIC	65,484	51,209	88.3%	69.0%
QLD	41,694	28,892	82.5%	57.2%
SA	22,884	17,091	82.8%	61.8%
WA	19,413	12,883	79.9%	53.0%
TAS	6,451	4,985	82.0%	63.4%
NT	792	693	87.9%	76.9%
ACT	2,711	1,713	89.5%	56.5%
Total	232,328	173,972	85.7%	64.1%

Source: My Aged Care Portal staff vaccination progress

**Resident vaccination information is reported manually by service providers

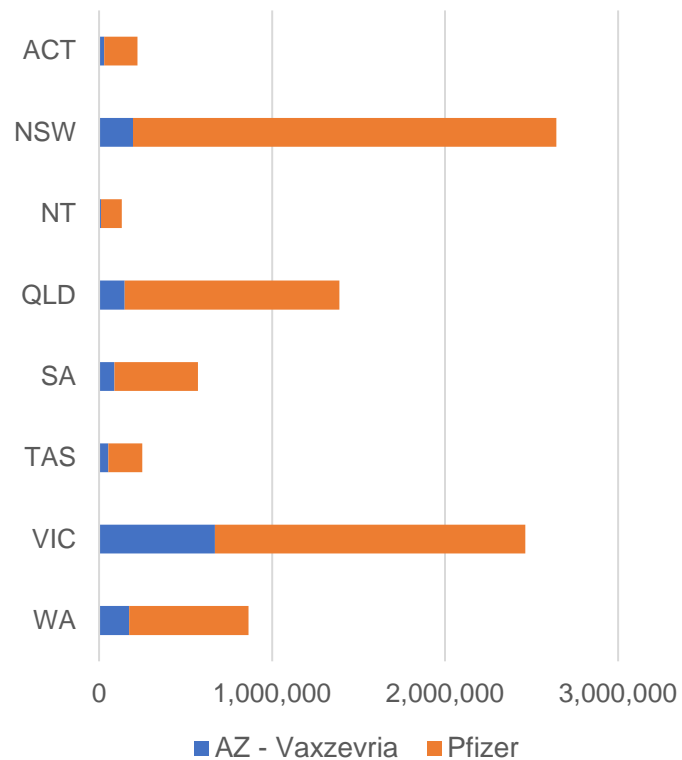
*Status updates are provided by facilities at least once per week. Reporting is updated Monday to Friday to encompass different facility updates being made on different days.

Data is sourced directly from Aged Care Service Providers and is not drawn or closely aligned with data from AIR due to inconsistencies and potential lags in uploading of records.

Data as at:
06 Sep 2021

Jurisdiction administered

Total vaccine doses administered in State and Territory clinics as at 06 September



8,978,454 total vaccine doses administered in State and Territory clinics as at 06 September
 + **91,887** recorded in the last 24 hours
 + **866,317** recorded in the last 7 days

NSW
2,814,670
 (+26,941 daily increase)

VIC
2,580,633
 (+31,013 daily increase)

QLD
1,456,589
 (+10,284 daily increase)

WA
907,563
 (+11,211 daily increase)

TAS
256,857
 (+1,320 daily increase)

SA
596,437
 (+7,211 daily increase)

ACT
231,291
 (+2,800 daily increase)

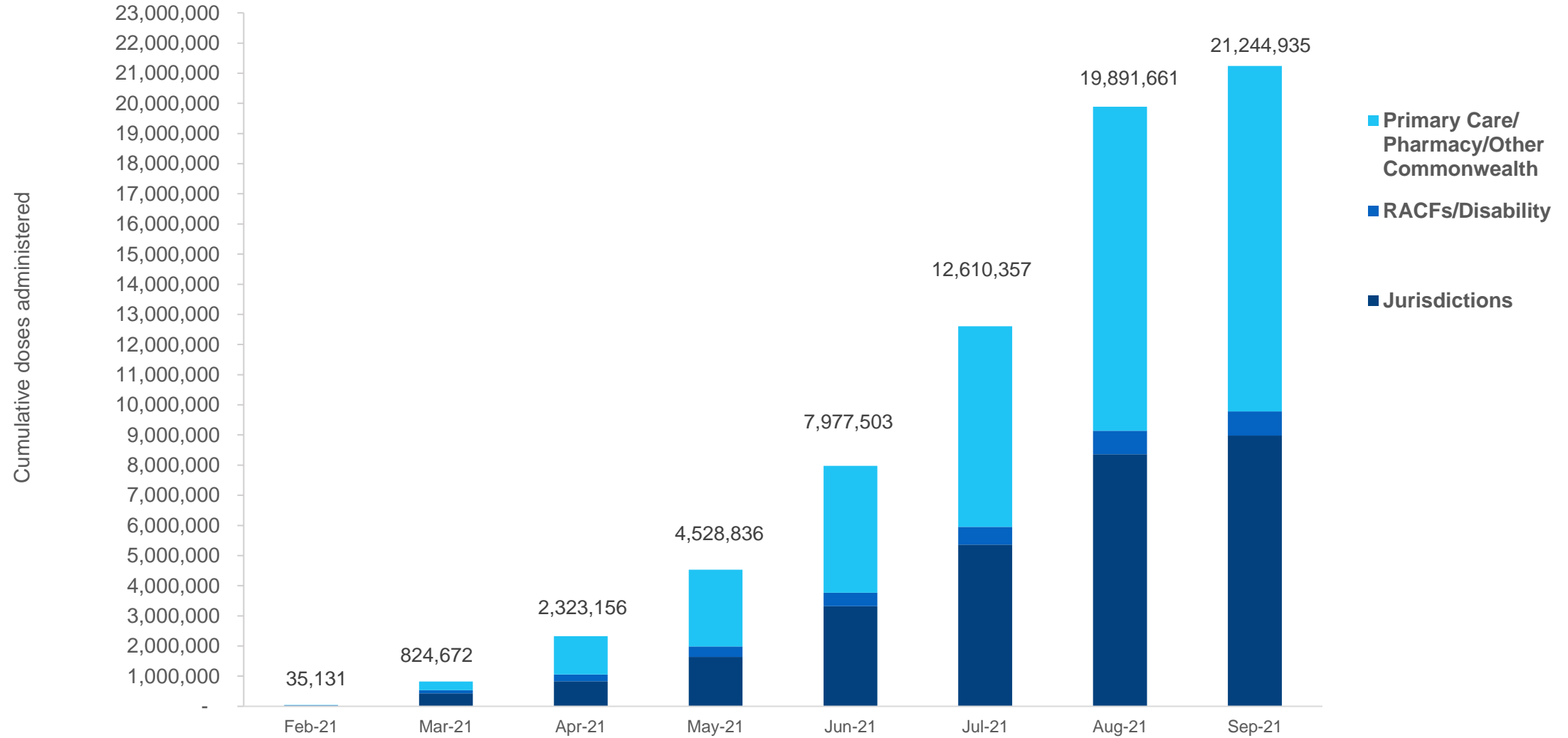
NT
134,414
 (+1,107 daily increase)

*Sourced from the Australian Immunisation Register and self-reported data. Numbers are calculated as difference in daily cumulative reported numbers to allow for historical corrections in all self-reported data sources.

Source: Australian Immunisation Register

Data as at:
06 Sep 2021

Cumulative doses administered by channel



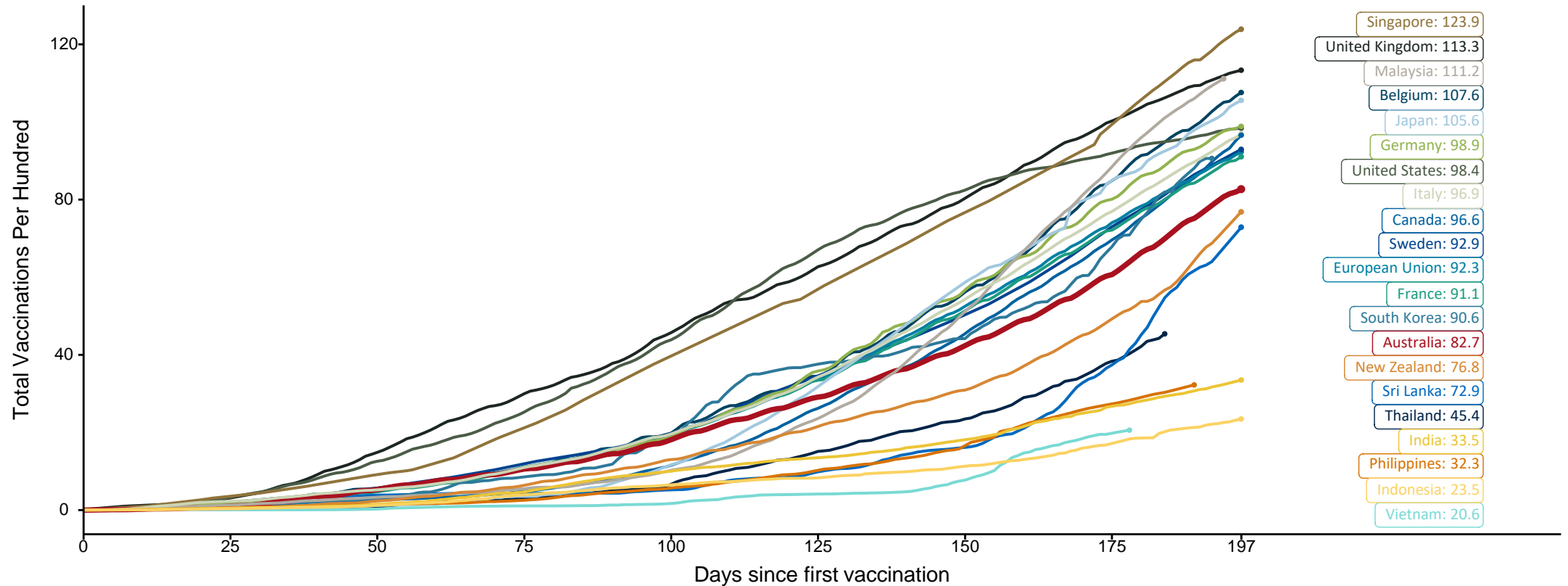
Source: Australian Immunisation Register

Doses at equivalent stages of rollout (Day 197)

Data as at:
06 Sep 2021

The x-axis is truncated at the length of Australia's vaccination program. Countries with intermittent reporting have had their doses per 100 imputed to Australia's current stage of rollout. Israel excluded as it is beyond scale of the graph

Cumulative doses administered (06 Sep): **21,244,935**

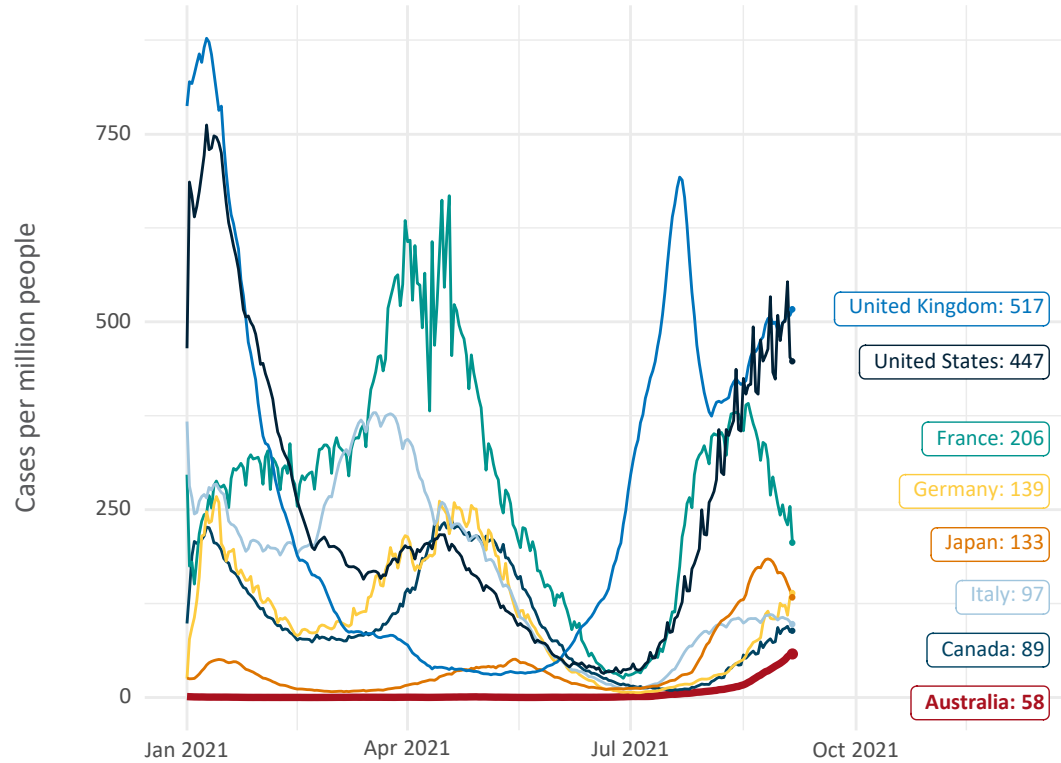


Source: Department of Health (Australia), Our World in Data (international)
Latest data: 06 September

Data as at:
06 Sep 2021

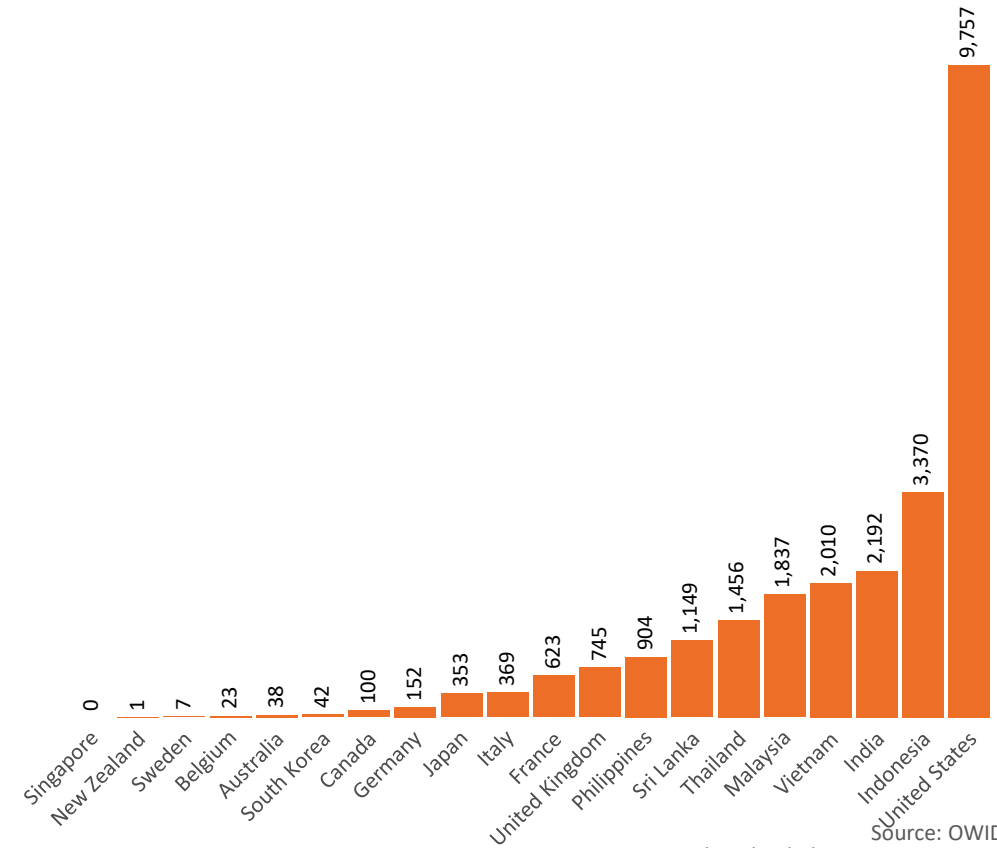
International data – COVID-19

New daily cases per million in 2021, Australia and G7 countries
Smoothed - 7 day average



Source: OWID
Data downloaded: 07 Sep 2021 08:46
Latest data: 05 Sep 2021


COVID-19 deaths in past 7 days - Australia and select countries



Source: OWID
Data downloaded: 07 Sep 2021 08:46
Latest data: 05 Sep 2021

Data as at midnight:
6 Sep 2021

Pandemic Response Payments



1.96 million
People have received at least one COVID Disaster Payment (including ISP200)

\$6.17 billion
Paid Out as at 6 Sep 2021

3.24 million
Claims granted across three different payments



93%
of Claims Received Digitally



COVID Disaster Payment: 3.21 million claims received - 1.81 million individuals paid a total of \$5.99 billion.

\$200 Income Support Payment: 188,000 claims received - 146,000 individuals paid a total of \$109.16 million.

Pandemic Leave Disaster Payment: 52,000 claims received - 45,000 individuals paid a total of \$71.39 million.



COVID Disaster Payment
assisting during a lockdown event in a Commonwealth hotspot.

Income Support Payment \$200
for income support recipients who lost at least 8 hours of work.

Pandemic Leave Disaster Payment
for those who have to self-isolate, quarantine or care.

For more information visit:
servicesaustralia.gov.au

COVID-19 DISASTER PAYMENTS

