



Australian Government
Operation COVID Shield

COVID-19 Vaccine Roll-out

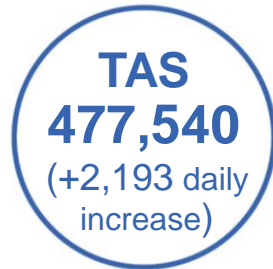
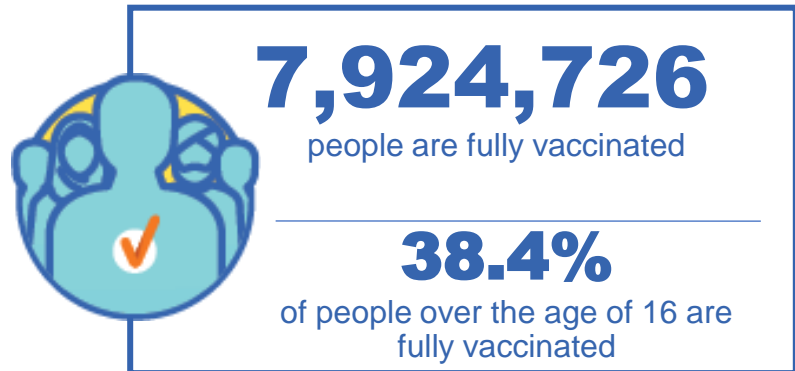
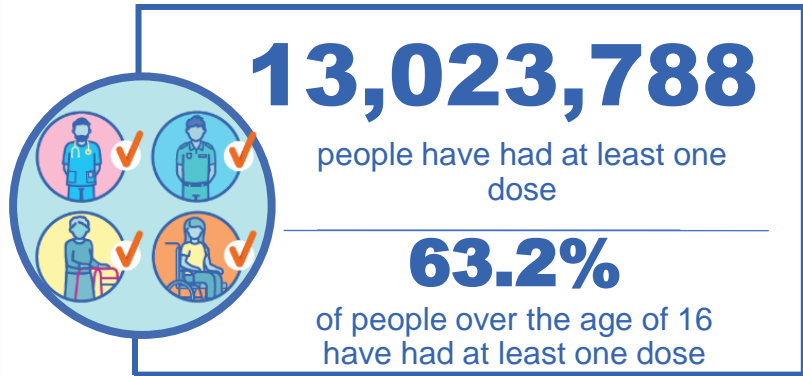
06 September 2021

Data as at:
05 Sep 2021

Total vaccine doses



20,985,989 total vaccine doses administered nationally as at 05 September
+130,636 recorded in the last 24 hours



*Administration state breakdown indicates state in which a vaccine was administered
**Overall dose count includes instances of more than two doses per person in a small number of cases.

Source: Australian Immunisation Register

Data as at:
05 Sep 2021

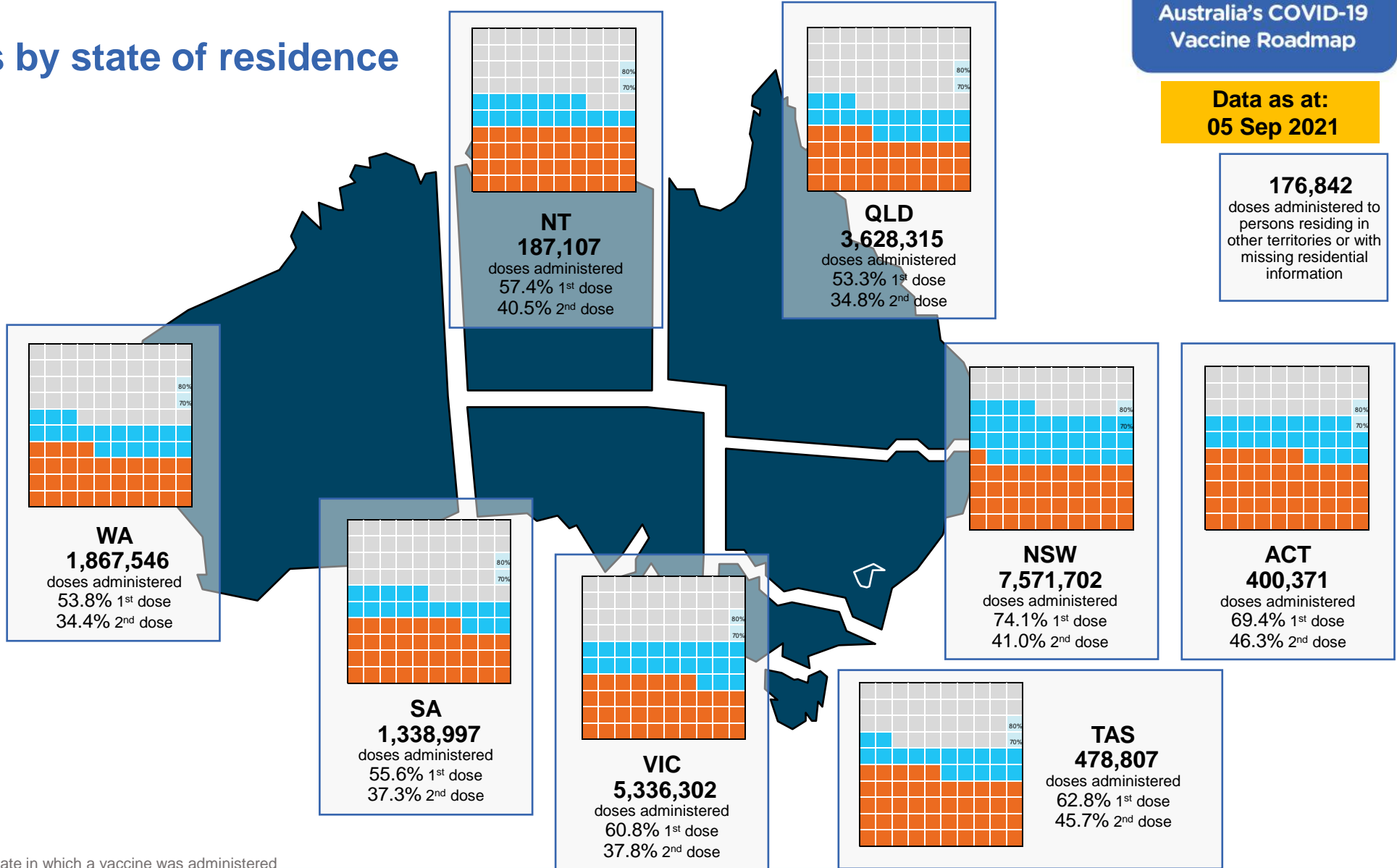
Vaccinations by state of residence

First doses

Age Today	4 weeks ago	8 weeks ago
16+	63.2%	44.8%
50+	81.2%	69.6%
70+	89.0%	82.2%

Fully vaccinated

Age Today	4 weeks ago	8 weeks ago
16+	38.4%	23.1%
50+	56.7%	32.9%
70+	66.7%	48.3%



*Residential state may differ from the state in which a vaccine was administered

Commonwealth and Jurisdiction vaccine doses administered

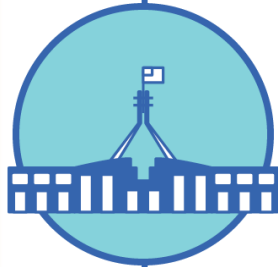
Data as at:
05 Sep 2021



20,985,989 total vaccine doses administered nationally as at 05 September
+ **130,636** recorded in the last 24 hours



8,886,567 doses administered by state and territory facilities
+ **91,664** recorded in the last 24 hours



12,099,422 doses administered by commonwealth facilities
+ **38,972** recorded in the last 24 hours

11,298,319 total vaccine doses administered in primary care settings
801,103 total vaccine doses administered in aged care and disability settings

NSW	Jurisdictions	Commonwealth
Cumulative	2,787,729	4,729,728
Daily increase	32,543	15,508

VIC	Jurisdictions	Commonwealth
Cumulative	2,549,620	2,816,958
Daily increase	23,633	12,224

QLD	Jurisdictions	Commonwealth
Cumulative	1,446,305	2,241,709
Daily increase	15,701	4,782

WA	Jurisdictions	Commonwealth
Cumulative	896,352	987,176
Daily increase	9,477	3,298

TAS	Jurisdictions	Commonwealth
Cumulative	255,537	222,003
Daily increase	1,648	545

SA	Jurisdictions	Commonwealth
Cumulative	589,226	747,533
Daily increase	5,172	1,494

ACT	Jurisdictions	Commonwealth
Cumulative	228,491	266,164
Daily increase	2,613	1,222

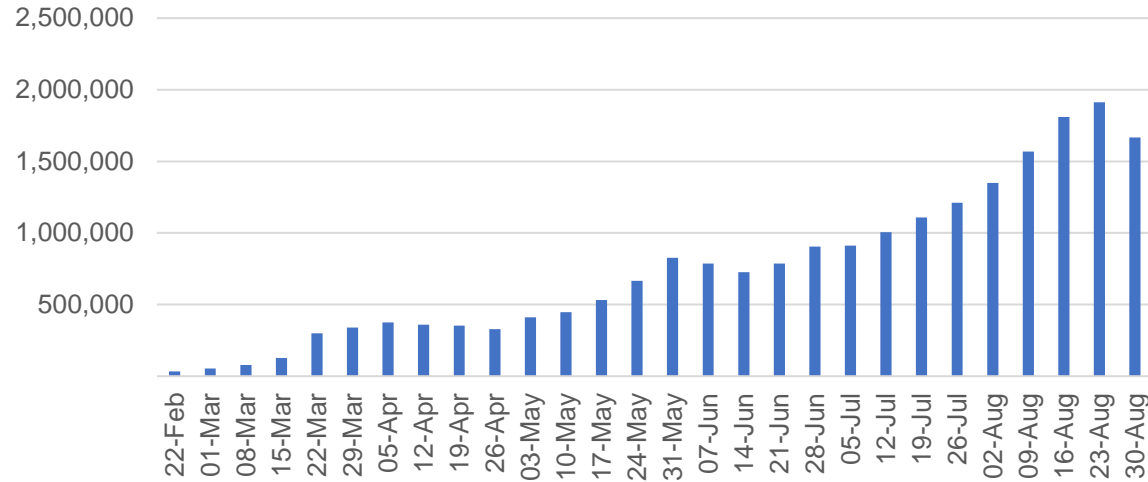
NT	Jurisdictions	Commonwealth
Cumulative	133,307	88,151
Daily increase	877	-101*

*Please note fluctuation of figures can be attributed to the historical reconciliation of data within the Australian Immunisation Register.

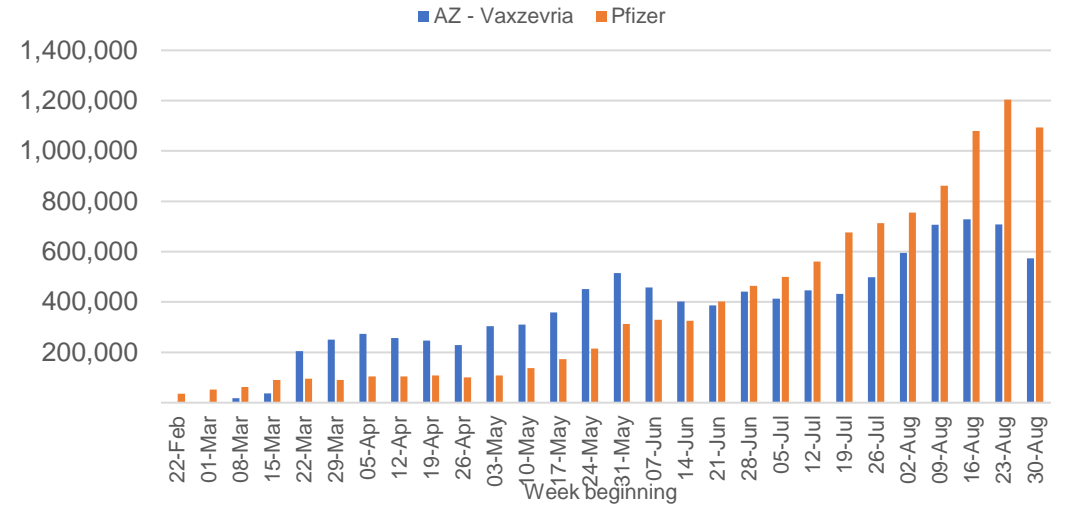
Vaccine milestone charts

Data as at: 05 Sep 2021

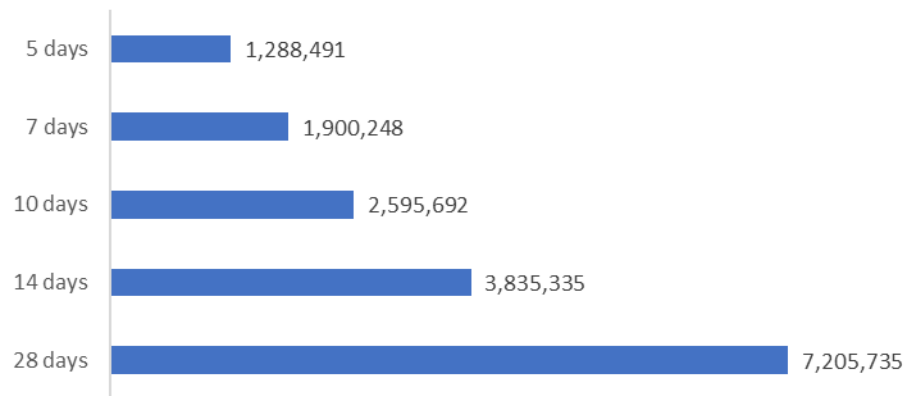
Jabs in arms by week



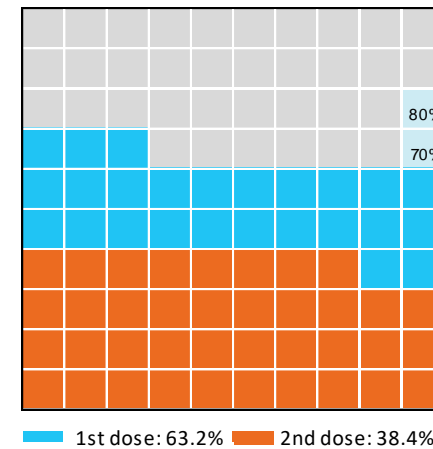
Doses by administration week and vaccine type



Doses reported



Eligible population percentage coverage



*Each square represents 1% of the national population. Squares are filled as milestones are achieved.

*Sourced from the Australian Immunisation Register.

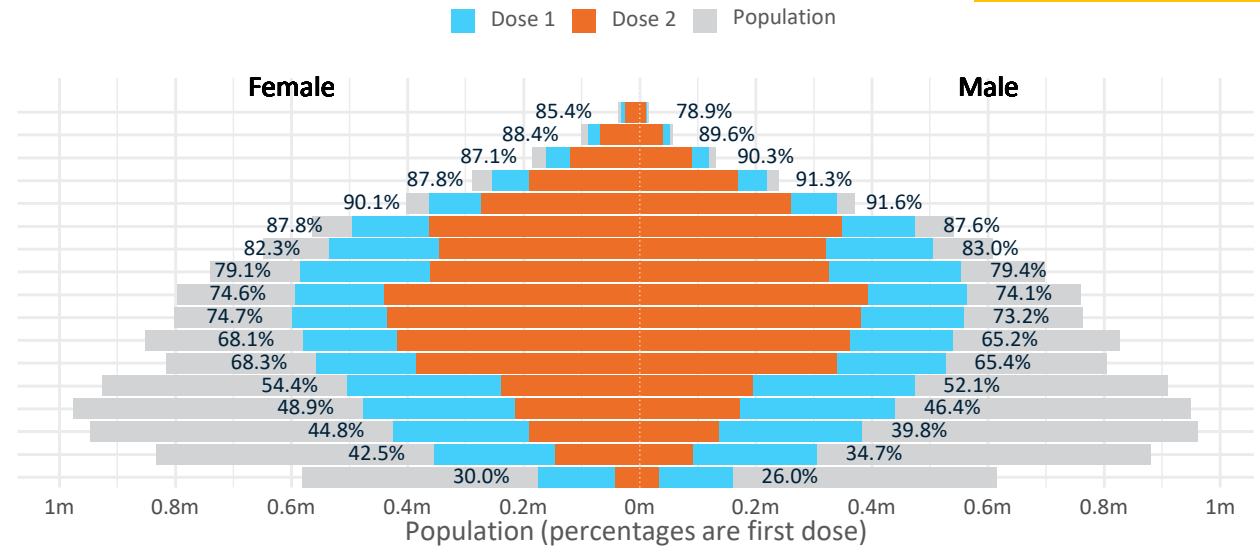
Data as at: 05 Sep 2021

Doses by age and sex

First and second doses by age and sex, using ABS age brackets

AUS	16+	50+	70+
Dose 1	63.16% (13,023,788 doses / 20,619,959 people)	81.23% (7,107,743 doses / 8,749,703 people)	88.97% (2,611,003 doses / 2,934,706 people)
Dose 2	38.43% (7,924,726 doses / 20,619,959 people)	56.68% (4,959,119 doses / 8,749,703 people)	66.68% (1,956,717 doses / 2,934,706 people)

Age	Dose 1	Dose 2
95+	44,264 (83.7%)	34,704 (65.6%)
90-94	140,924 (89.0%)	107,818 (68.1%)
85-89	279,906 (88.5%)	210,329 (66.5%)
80-84	472,784 (89.5%)	358,179 (67.8%)
75-79	703,281 (90.9%)	533,669 (69.0%)
70-74	969,844 (87.8%)	712,018 (64.4%)
65-69	1,041,023 (82.7%)	667,879 (53.1%)
60-64	1,140,002 (79.4%)	686,619 (47.8%)
55-59	1,157,327 (74.4%)	832,937 (53.5%)
50-54	1,158,388 (74.0%)	814,967 (52.1%)
45-49	1,118,707 (66.7%)	780,403 (46.5%)
40-44	1,085,112 (67.0%)	724,804 (44.7%)
35-39	979,998 (53.4%)	433,108 (23.6%)
30-34	921,455 (47.9%)	388,321 (20.2%)
25-29	813,563 (42.7%)	326,804 (17.1%)
20-24	663,020 (38.7%)	238,228 (13.9%)
16-19	334,190 (27.9%)	73,939 (6.2%)



DOH (Australian Immunisation Register), ABS (Population)

	AUS	ACT	NSW	NT	QLD	SA	TAS	VIC	WA
16 and over - dose 1	13,023,788	238,621	4,862,704	109,426	2,193,234	800,532	276,644	3,285,211	1,137,271
16 and over - dose 2	7,924,726	159,406	2,692,904	77,258	1,429,206	536,937	200,952	2,043,711	727,924
16 and over - population	20,619,959*	344,037	6,565,651	190,571	4,112,707	1,440,400	440,172	5,407,574	2,114,978
16 and over % with dose 1	63.16%	69.36%	74.06%	57.42%	53.33%	55.58%	62.85%	60.75%	53.77%
16 and over % with dose 2	38.43%	46.33%	41.02%	40.54%	34.75%	37.28%	45.65%	37.79%	34.42%
50 and over - dose 1	7,107,743	121,172	2,418,357	44,132	1,332,531	512,540	177,652	1,798,462	659,416
50 and over - dose 2	4,959,119	89,784	1,639,920	32,342	926,998	348,348	134,316	1,295,114	466,307
50 and over - population	8,749,703	127,802	2,807,793	62,280	1,758,855	674,384	220,036	2,211,211	885,370
50 and over % with dose 1	81.23%	94.81%	86.13%	70.86%	75.76%	76.00%	80.74%	81.33%	74.48%
50 and over % with dose 2	56.68%	70.25%	58.41%	51.93%	52.70%	51.65%	61.04%	58.57%	52.67%
70 and over - dose 1	2,611,003	40,378	882,045	9,655	501,865	205,834	69,201	647,062	236,157
70 and over - dose 2	1,956,717	31,859	652,712	7,455	378,646	147,468	54,536	492,669	178,131
70 and over - population	2,934,706	39,946	962,606	12,343	577,767	240,514	77,155	743,519	280,281
70 and over % with dose 1	88.97%	>95%	91.63%	78.22%	86.86%	85.58%	89.69%	87.03%	84.26%
70 and over % with dose 2	66.68%	79.76%	67.81%	60.40%	65.54%	61.31%	70.68%	66.26%	63.55%

*National population will not equal sum of listed jurisdictions due to a small number of people counted in national population residing in some 'other' territories

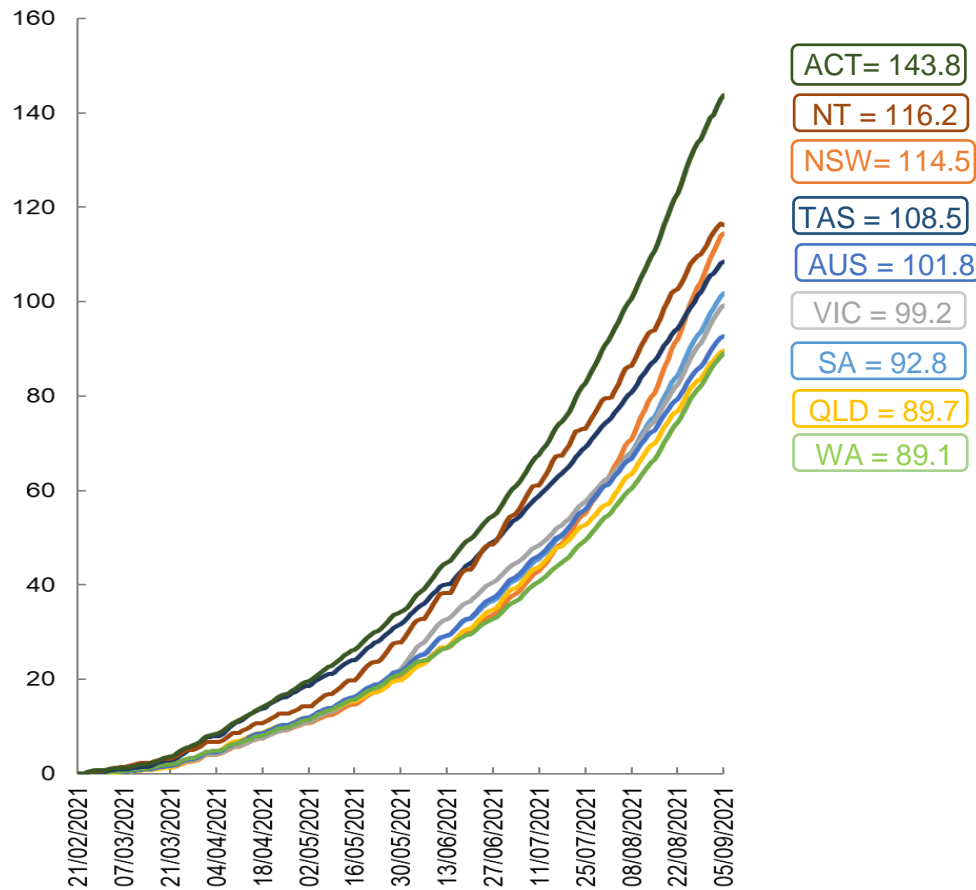
Doses sourced from Australian Immunisation Register, population from ABS ERP June 2020

Vaccinations by location

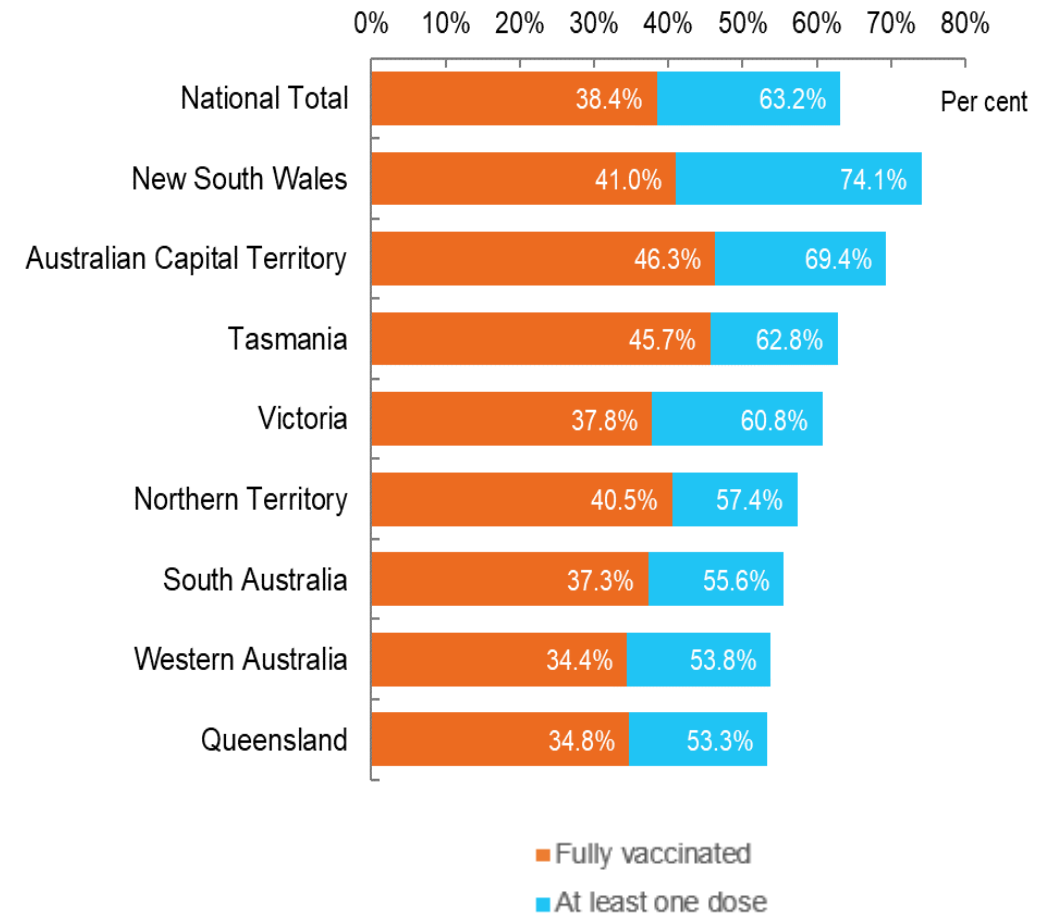
Data as at:
05 Sep 2021

Australia's COVID-19
Vaccine Roadmap

Cumulative total doses administered vs state populations*



First and Second Doses by state of residence



*Not an indication of percentage vaccinated, numbers will exceed 100 due to multiple doses required per person of the population

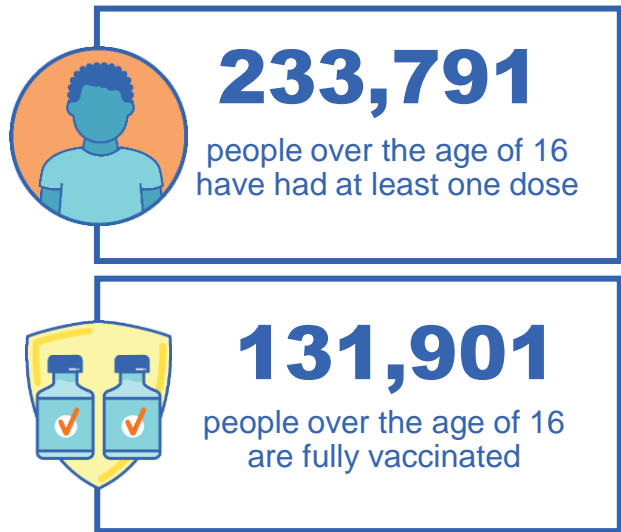
Aboriginal and Torres Strait Islander peoples

Number of people vaccinated

Data as at:
05 Sep 2021
Updated weekly
Data reconciliation underway

166 Aboriginal community controlled health services (ACCHS)

0#	48	26	39	11	3	21	18
ACT	NSW	NT	QLD	SA	TAS	VIC	WA



6,114 people with at least one dose
2,845 people fully vaccinated

residing in other territories or with missing residential information
Source: Australian Immunisation Register

*Identifying as Aboriginal and Torres Strait Islander is optional and the estimated population may be under reported.
**Includes all Aboriginal and Torres Strait Islander peoples who have received a vaccination, not limited to those administered in an ACCHS setting
***Updated weekly.
#ACCHS in the ACT are currently operating as a Commonwealth Vaccine Clinics so not included to avoid double counting

Data as at:
05 Sep 2021

Commonwealth primary care



Primary care vaccine administration sites

5,378	137	166	3,092
GPs	CVCs	ACCHS	Pharmacies



11,298,319 total vaccine doses administered primary care settings as at 05 September
+ 36,860 recorded in the last 24 hours

Primary care vaccinations by provider type

	Doses administered	Daily increase	7 day increase
General Practice* includes other Commonwealth	10,908,130	34,534	903,396
Pharmacy	390,189	2,326	97,251



57,593 doses administered to persons residing in other territories or with missing residential information

*General practice includes Commonwealth Vaccination Clinics, Aboriginal Community Health Centres, Royal Flying Doctor Service and other Commonwealth vaccination facilities

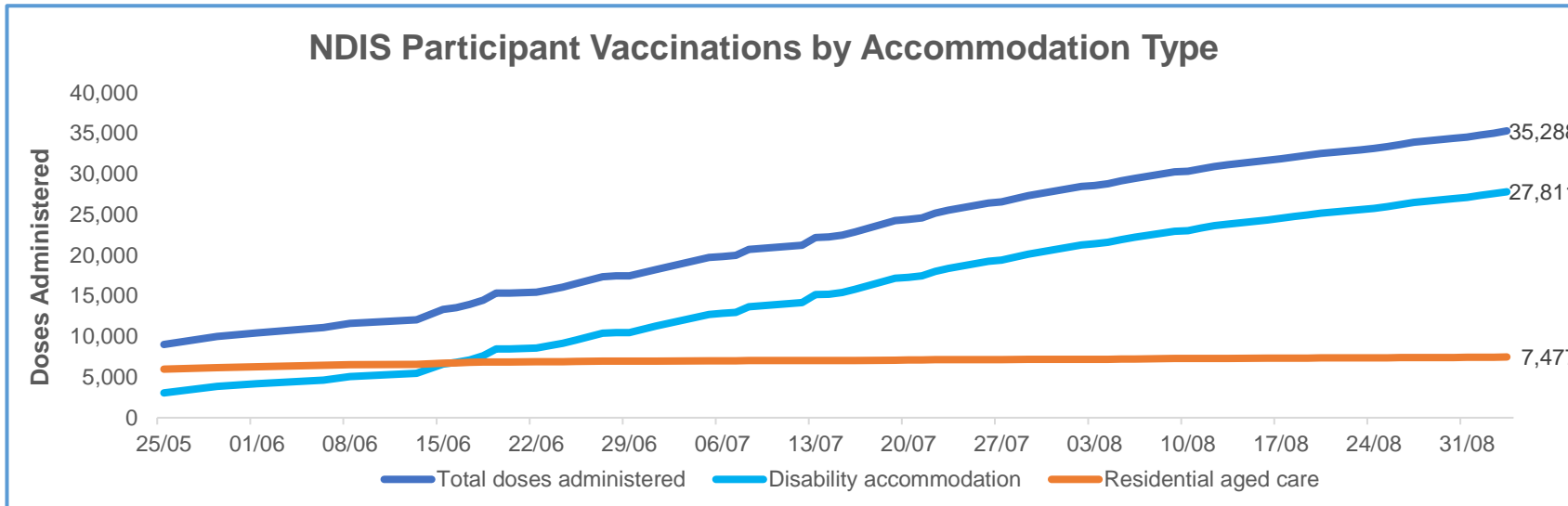
** Please note fluctuation of figures can be attributed to the historical reconciliation of data within the Australian Immunisation Register.

Source: Australian Immunisation Register

Vaccination rate of people with disability and the disability workforce

Phase 1a – People with disability living in shared accommodation

Data as at:
02 September 2021



	Total people with at least one dose	People with first dose protection	People fully vaccinated	Total number of individuals in cohort	Total doses administered	% People with at least one dose	% People fully vaccinated
NDIS participants living in shared accommodation *	19,303	3,318	15,985	27,293	35,288	70.7%	58.6%

* Shared accommodation means two or more people with disability living in shared residential accommodation and NDIS participants living in Residential Aged Care accommodation as per the eligibility criteria of Phase 1a.

Source: Linkage between National Disability Insurance Agency data and the Australian Immunisation Register.



Residential aged care vaccination rollout

Residential aged care facilities status

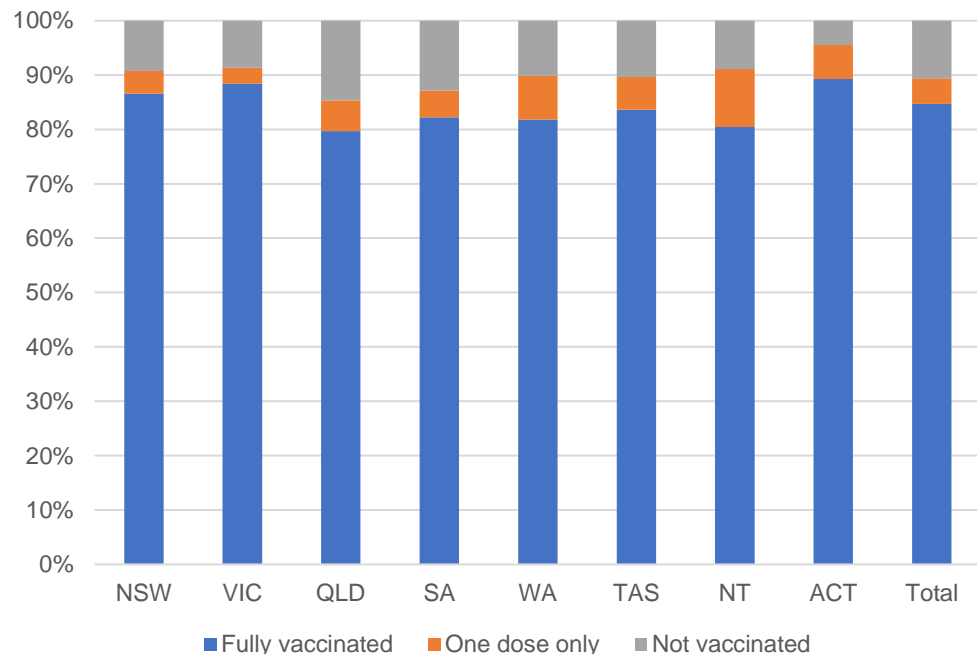
100%
Commonwealth facilities visited (2,569 planned sites)

157,857
People fully vaccinated

89%
Participation rate

Data as at: 05 September 2021*

Aged care resident vaccinations



Aged care worker vaccinations

Jurisdictions	Total workers with at least one dose	Workers fully vaccinated	% Workers with at least one dose	% Workers fully vaccinated
NSW	72,372	56,128	87.4%	67.8%
VIC	65,124	50,836	88.0%	68.7%
QLD	41,418	28,561	81.8%	56.4%
SA	22,750	16,957	82.1%	61.2%
WA	19,309	12,829	79.4%	52.7%
TAS	5,972	4,669	75.3%	58.9%
NT	792	693	87.9%	76.9%
ACT	2711	1713	89.5%	56.5%
Total	230,448	172,386	84.9%	63.5%

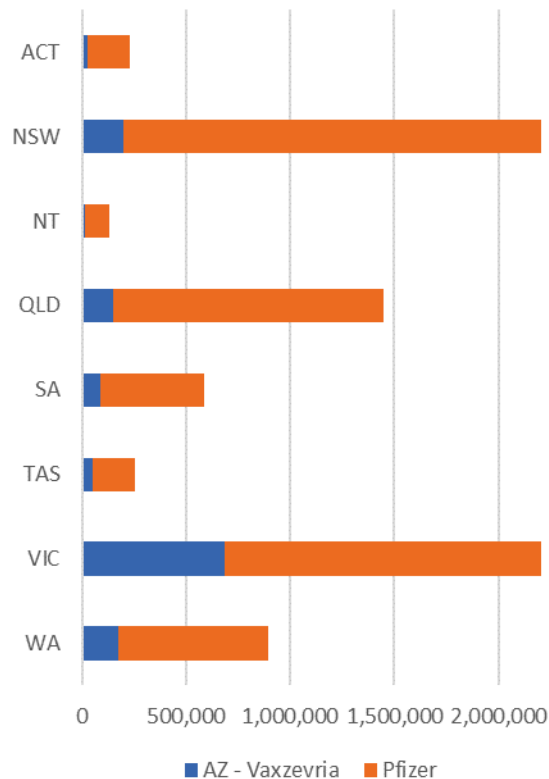
Source: My Aged Care Portal staff vaccination progress

**Resident vaccination information is reported manually by service providers
 *Status updates are provided by facilities at least once per week. Reporting is updated Monday to Friday to encompass different facility updates being made on different days.
 Data is sourced directly from Aged Care Service Providers and is not drawn or closely aligned with data from AIR due to inconsistencies and potential lags in uploading of records.

Data as at:
05 Sep 2021

Jurisdiction administered

Total vaccine doses administered in State and Territory clinics as at 05 September



8,886,567 total vaccine doses administered in State and Territory clinics as at 05 September
 + **91,664** recorded in the last 24 hours
 + **886,415** recorded in the last 7 days

NSW
2,787,729
 (+32,543 daily increase)

VIC
2,549,620
 (+23,633 daily increase)

QLD
1,446,305
 (+15,701 daily increase)

WA
896,352
 (+9,477 daily increase)

TAS
255,537
 (+1,648 daily increase)

SA
589,226
 (+5,172 daily increase)

ACT
228,491
 (+2,613 daily increase)

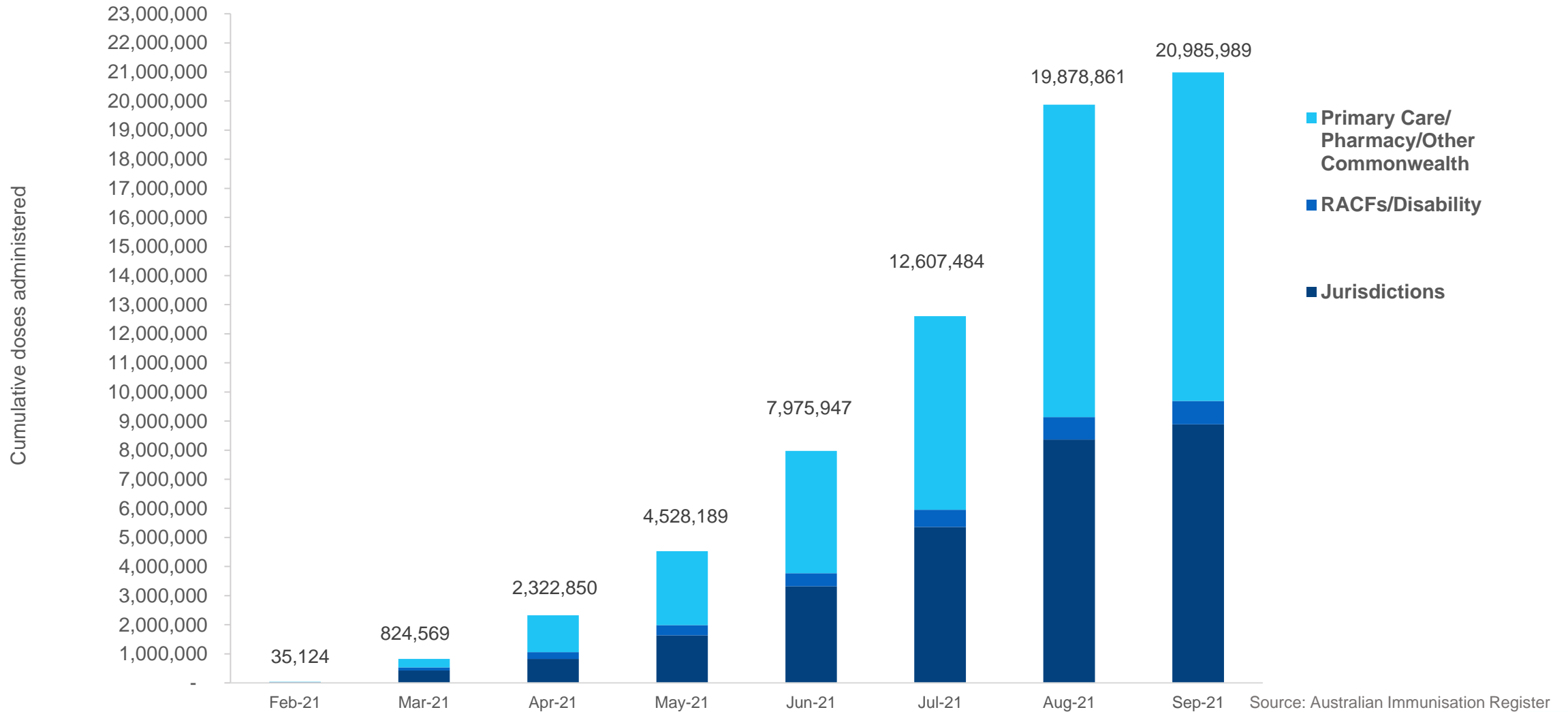
NT
133,307
 (+877 daily increase)

*Sourced from the Australian Immunisation Register and self-reported data. Numbers are calculated as difference in daily cumulative reported numbers to allow for historical corrections in all self-reported data sources.

Source: Australian Immunisation Register

Cumulative doses administered by channel

Data as at:
05 Sep 2021

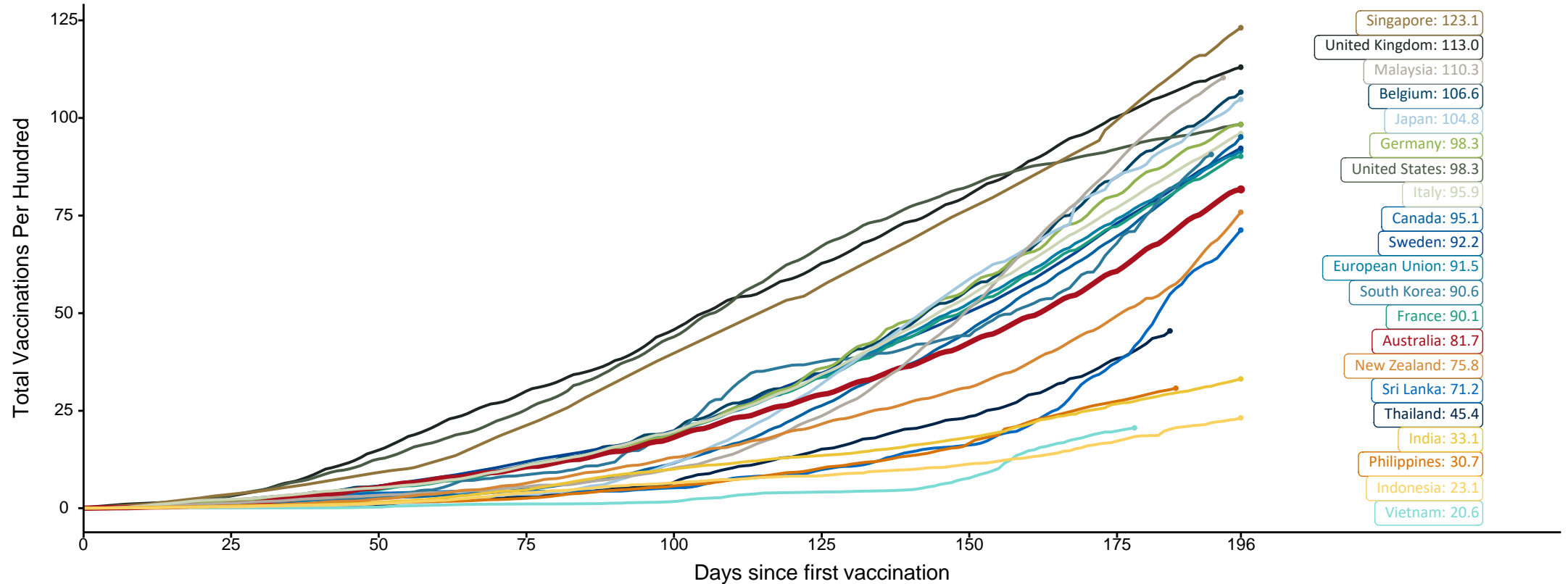


Doses at equivalent stages of rollout (Day 196)

Data as at:
05 Sep 2021

The x-axis is truncated at the length of Australia's vaccination program. Countries with intermittent reporting have had their doses per 100 imputed to Australia's current stage of rollout. Israel excluded as it is beyond scale of the graph

Cumulative doses administered (05 Sep): **20,985,989**

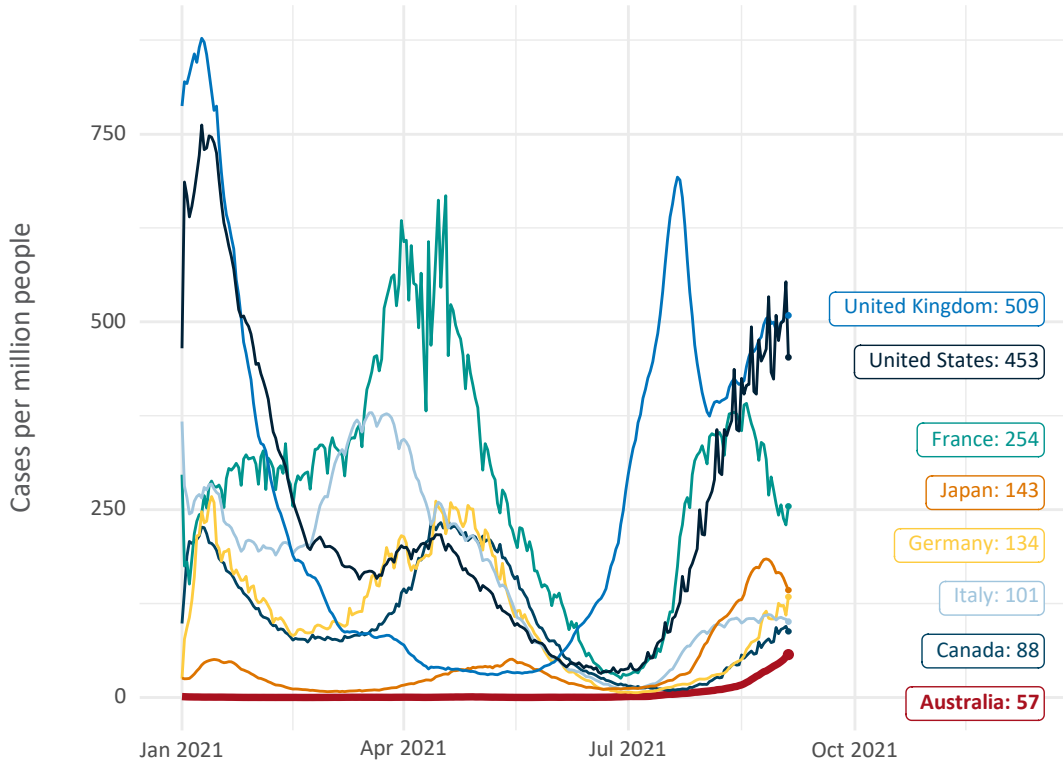


Source: Department of Health (Australia), Our World in Data (international)
Latest data: 05 September

Data as at:
05 Sep 2021

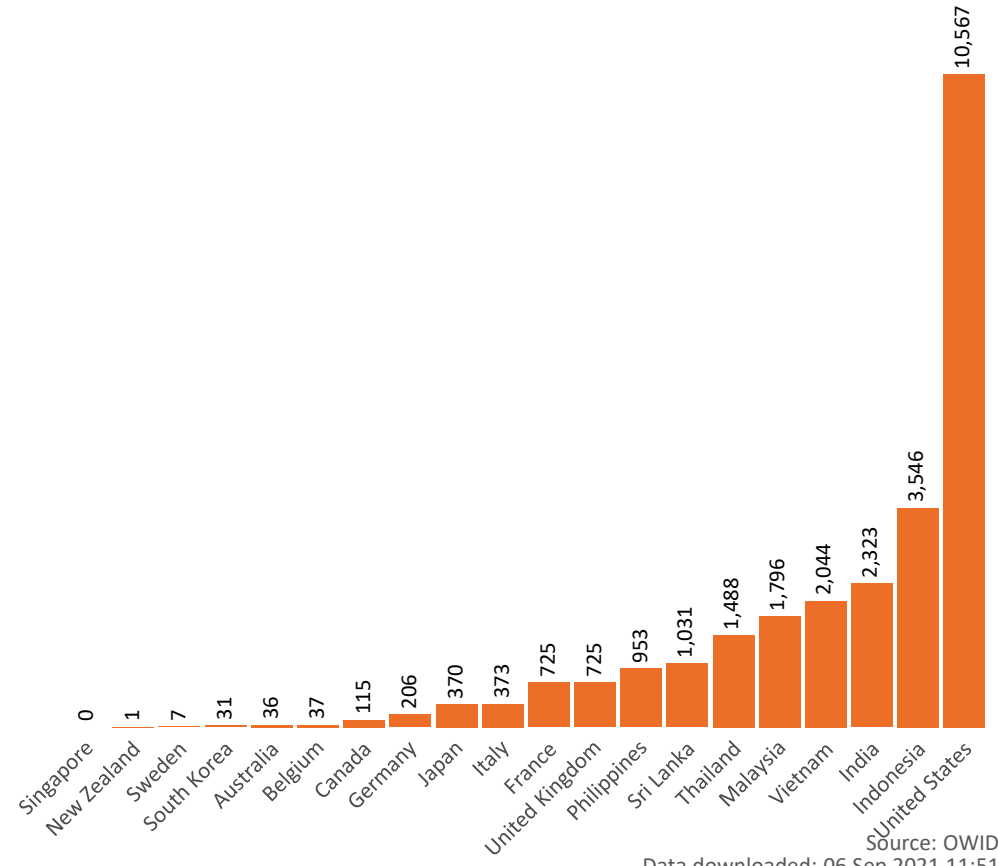
International data – COVID-19

New daily cases per million in 2021, Australia and G7 countries
Smoothed - 7 day average



Source: OWID
Data downloaded: 06 Sep 2021 11:51
Latest data: 04 Sep 2021


COVID-19 deaths in past 7 days - Australia and select countries



Source: OWID
Data downloaded: 06 Sep 2021 11:51
Latest data: 04 Sep 2021

Pandemic Response Payments

Data as at midnight:
5 Sep 2021



1.95 million
People have received at least one COVID Disaster Payment (including ISP200)

\$6.11 billion
Paid Out as at 5 Sep 2021

3.21 million
Claims granted across three different payments




93%
of Claims Received Digitally



COVID Disaster Payment: 3.18 million claims received - 1.80 million individuals paid a total of \$5.95 billion.

\$200 Income Support Payment: 184,000 claims received - 145,000 individuals paid a total of \$96.14 million.

Pandemic Leave Disaster Payment: 52,000 claims received - 44,000 individuals paid a total of \$70.09 million.



THREE PAYMENTS AVAILABLE

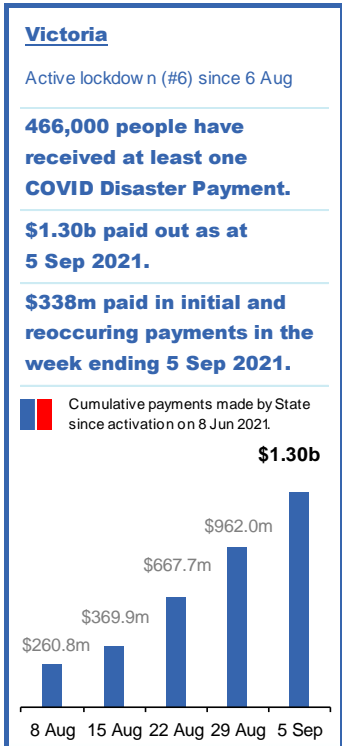
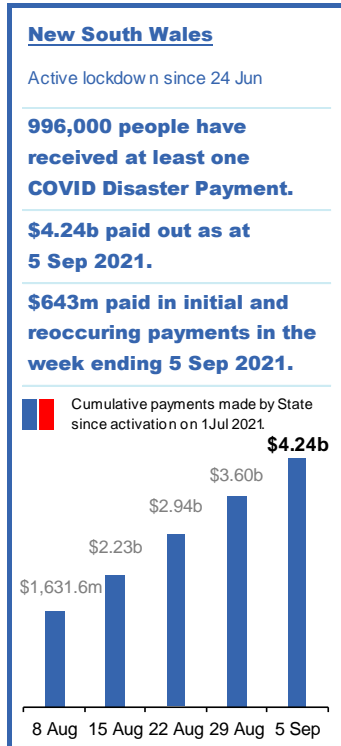
COVID Disaster Payment
assisting during a lockdown event in a Commonwealth hotspot.

Income Support Payment \$200
for income support recipients who lost at least 8 hours of work.

Pandemic Leave Disaster Payment
for those who have to self-isolate, quarantine or care.

For more information visit:
servicesaustralia.gov.au

COVID-19 DISASTER PAYMENTS



Administration and Utilisation

Doses as at Week 28

	Ordered (including coming week)	Available (delivered weeks 1-27, until 29 August)	Administered (weeks 1-28 until 5 September)	Available minus Administered	Estimated Dose Utilisation % (see note)
NSW	3,347,980	3,220,450	2,787,729	432,721	97%
VIC	3,060,860	2,946,260	2,549,620	396,640	97%
QLD	1,788,810	1,609,360	1,446,305	163,055	Fully utilised
WA	990,538	942,718	896,352	46,366	Fully utilised
SA	756,210	687,110	589,226	97,884	96%
TAS	321,680	301,030	255,537	45,493	95%
NT	193,634	172,516	133,307	39,209	87%
ACT	262,438	241,598	228,491	13,107	Fully utilised
Jurisdiction delivered total	10,722,150	10,121,042	8,886,567	1,234,475	98%
Commonwealth Aged Care & Disability	886,654	822,370	801,103	21,267	N/A
Commonwealth Primary Care	15,400,971	14,424,849	11,298,319	3,126,530	88%
Total	27,254,334	25,579,254	20,985,989	4,593,265	92%

About this data

- Ordered – Total doses delivered to sites. Based on logistics provider data. This figure includes doses allocated for administration in the coming week.
- Available – total doses that could have been administered to date, less doses re-distributed from States & Territories to Primary Care or Aged Care & Disability (i.e. does not include those deliveries recently received, and intended for use in the coming week).
- Administered – Doses administered as at 5 September 2021.
- The dose utilisation is calculated based on the total doses administered and a small % wastage in line with international standards in relation to total available doses.
- For Aged Care & Disability, the doses available for administration is for the full period (Weeks 1-28).
- Aged Care & Disability utilisation is not provided as the in-reach rollout is demand-based, with vaccines ordered based on resident numbers.