



**Australian Government**  
**Operation COVID Shield**

# COVID-19 Vaccine Roll-out

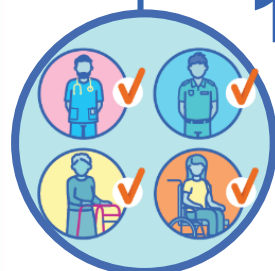
05 September 2021

Data as at:  
04 Sep 2021

## Total vaccine doses



**20,855,353** total vaccine  
doses administered nationally as at 04 September  
**+213,595** recorded in the last 24 hours



**12,938,761**

people have had at least one  
dose

**62.7%**

of people over the age of 16  
have had at least one dose



**7,879,487**

people are fully vaccinated

**38.2%**

of people over the age of 16 are  
fully vaccinated

**NSW**  
**7,469,406**  
(+94,698 daily  
increase)

**VIC**  
**5,330,721**  
(+51,561 daily  
increase)

**QLD**  
**3,667,531**  
(+31,068 daily  
increase)

**WA**  
**1,870,753**  
(+17,474 daily  
increase)

**TAS**  
**475,347**  
(+4,050 daily  
increase)

**SA**  
**1,330,093**  
(+9,352 daily  
increase)

**ACT**  
**490,820**  
(+4,430 daily  
increase)

**NT**  
**220,682**  
(+962 daily  
increase)

\*Administration state breakdown indicates state in which a vaccine was administered

\*\*Overall dose count includes instances of more than two doses per person in a small number of cases.

Source: Australian Immunisation Register

Data as at:  
04 Sep 2021

**175,413**

doses administered to  
persons residing in  
other territories or with  
missing residential  
information

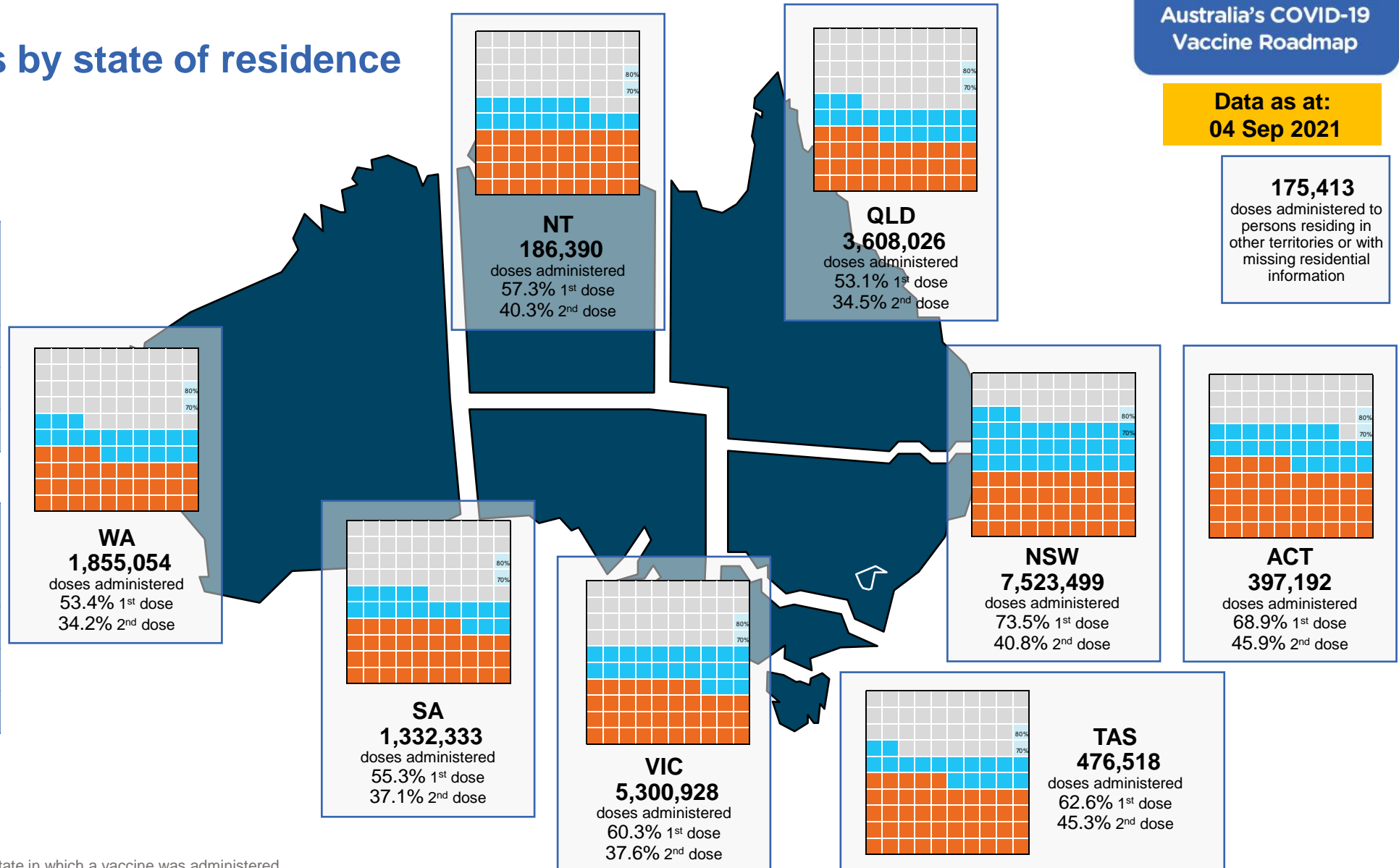
## Vaccinations by state of residence

### First doses

| Age Today | 4 weeks ago | 8 weeks ago |
|-----------|-------------|-------------|
| 16+       | 62.7%       | 44.6%       |
| 50+       | 81.1%       | 69.5%       |
| 70+       | 88.9%       | 82.1%       |

### Fully vaccinated

| Age Today | 4 weeks ago | 8 weeks ago |
|-----------|-------------|-------------|
| 16+       | 38.2%       | 22.9%       |
| 50+       | 56.5%       | 32.7%       |
| 70+       | 66.6%       | 48.2%       |



\*Residential state may differ from the state in which a vaccine was administered

## Commonwealth and Jurisdiction vaccine doses administered

Data as at:  
04 Sep 2021



**20,855,353** total vaccine  
doses administered nationally as at 04 September  
**+ 213,595** recorded in the last 24 hours

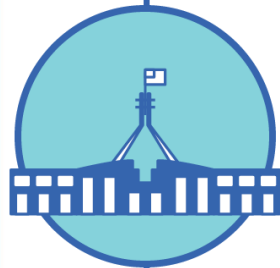


**8,794,903**

doses administered by state  
and territory facilities

**+ 124,958**

recorded in the last 24 hours



**12,060,450**

doses administered by  
commonwealth facilities

**+ 88,637**

recorded in the last 24 hours

**11,261,459** total vaccine doses  
administered in primary care settings

**798,991** total vaccine doses  
administered in aged care and disability  
settings

| NSW            | Jurisdictions | Commonwealth |
|----------------|---------------|--------------|
| Cumulative     | 2,755,186     | 4,714,220    |
| Daily increase | 56,625        | 38,073       |

| VIC            | Jurisdictions | Commonwealth |
|----------------|---------------|--------------|
| Cumulative     | 2,525,987     | 2,804,734    |
| Daily increase | 27,401        | 24,160       |

| QLD            | Jurisdictions | Commonwealth |
|----------------|---------------|--------------|
| Cumulative     | 1,430,604     | 2,236,927    |
| Daily increase | 19,767        | 11,301       |

| WA             | Jurisdictions | Commonwealth |
|----------------|---------------|--------------|
| Cumulative     | 886,875       | 983,878      |
| Daily increase | 10,466        | 7,008        |

| TAS            | Jurisdictions | Commonwealth |
|----------------|---------------|--------------|
| Cumulative     | 253,889       | 221,458      |
| Daily increase | 2,398         | 1,652        |

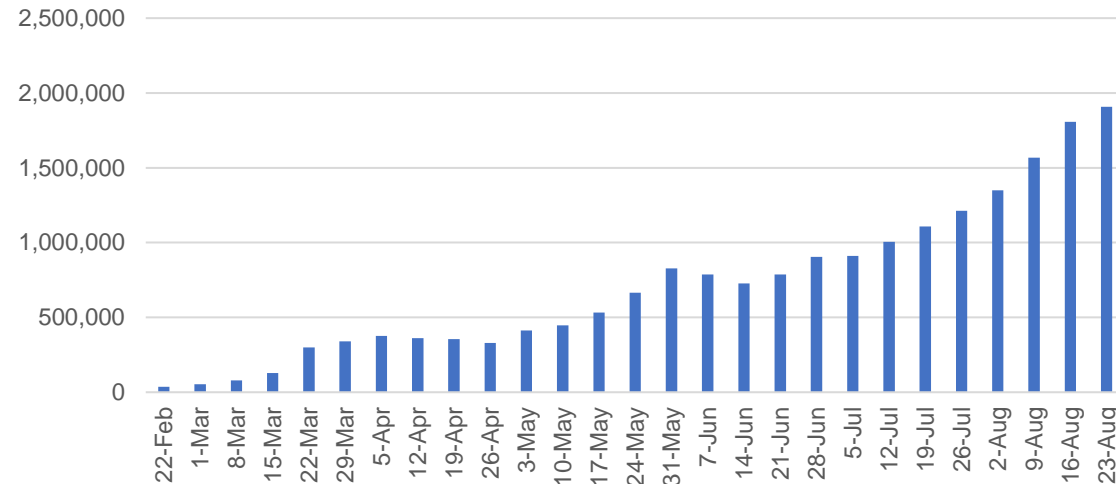
| SA             | Jurisdictions | Commonwealth |
|----------------|---------------|--------------|
| Cumulative     | 584,054       | 746,039      |
| Daily increase | 5,116         | 4,236        |

| ACT            | Jurisdictions | Commonwealth |
|----------------|---------------|--------------|
| Cumulative     | 225,878       | 264,942      |
| Daily increase | 2,357         | 2,073        |

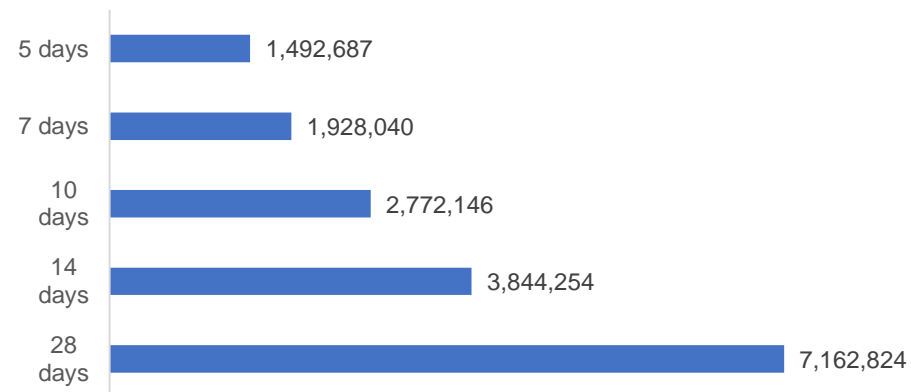
| NT             | Jurisdictions | Commonwealth |
|----------------|---------------|--------------|
| Cumulative     | 132,430       | 88,252       |
| Daily increase | 828           | 134          |

# Vaccine milestone charts

Jabs in arms by week



Doses reported

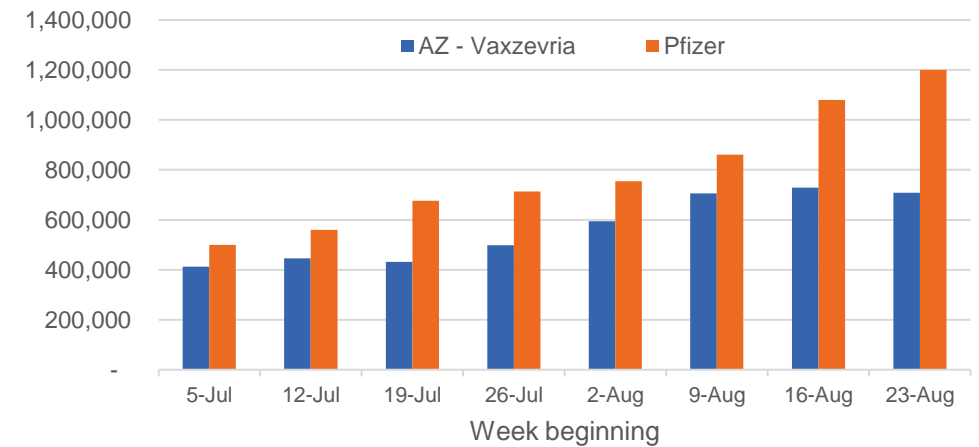


\*Sourced from the Australian Immunisation Register.

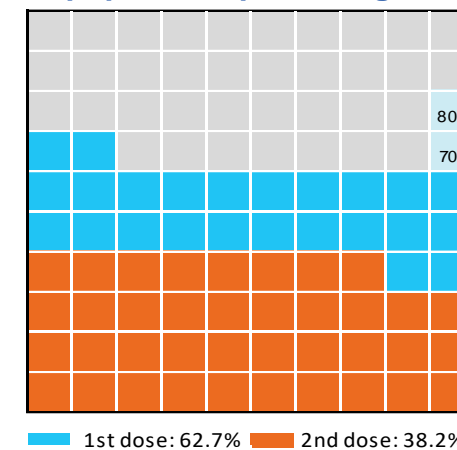
Data as at:  
04 Sep 2021

Australia's COVID-19  
Vaccine Roadmap

Doses by administration week and vaccine type



Eligible population percentage coverage



\*Each square represents 1% of the national population.  
Squares are filled as milestones are achieved.

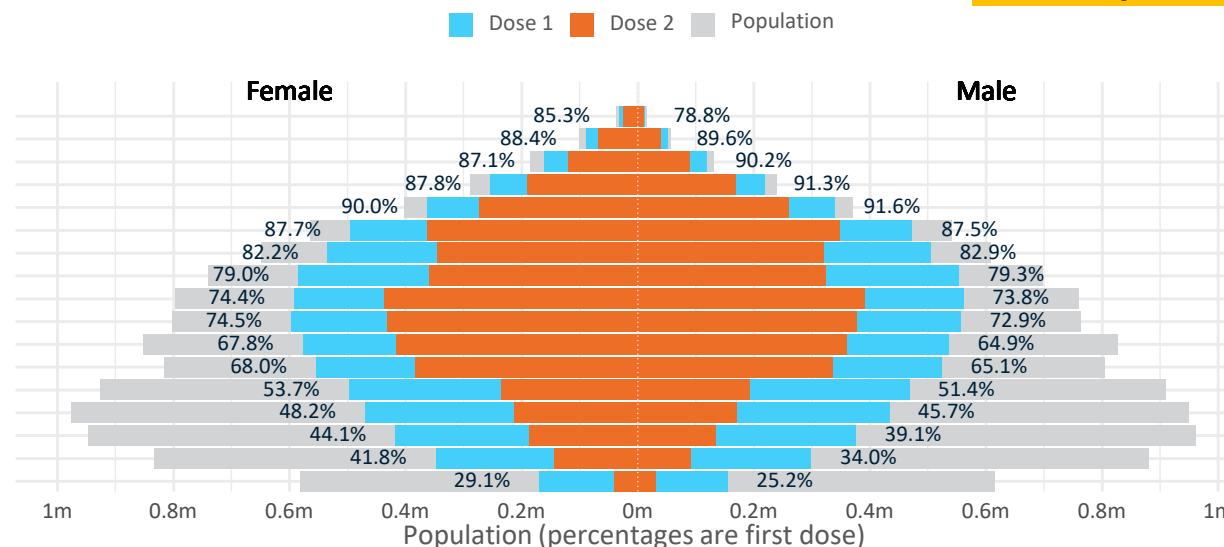
# Doses by age and sex

First and second doses by age and sex, using ABS age brackets

Australia's COVID-19  
Vaccine Roadmap

Data as at:  
04 Sep 2021

| Age   | Dose 1            | Dose 2          |
|-------|-------------------|-----------------|
| 95+   | 44,209 (83.6%)    | 34,651 (65.5%)  |
| 90-94 | 140,829 (88.9%)   | 107,684 (68.0%) |
| 85-89 | 279,668 (88.4%)   | 210,006 (66.4%) |
| 80-84 | 472,471 (89.4%)   | 357,609 (67.7%) |
| 75-79 | 702,764 (90.8%)   | 532,772 (68.9%) |
| 70-74 | 969,222 (87.7%)   | 710,875 (64.3%) |
| 65-69 | 1,039,950 (82.7%) | 665,841 (52.9%) |
| 60-64 | 1,138,366 (79.2%) | 683,792 (47.6%) |
| 55-59 | 1,153,924 (74.2%) | 828,119 (53.2%) |
| 50-54 | 1,154,025 (73.8%) | 809,169 (51.7%) |
| 45-49 | 1,113,712 (66.4%) | 775,227 (46.2%) |
| 40-44 | 1,079,471 (66.6%) | 719,436 (44.4%) |
| 35-39 | 967,793 (52.7%)   | 428,594 (23.4%) |
| 30-34 | 908,173 (47.2%)   | 383,999 (20.0%) |
| 25-29 | 799,705 (41.9%)   | 323,421 (17.0%) |
| 20-24 | 650,415 (38.0%)   | 235,622 (13.8%) |
| 16-19 | 324,064 (27.1%)   | 72,670 (6.1%)   |



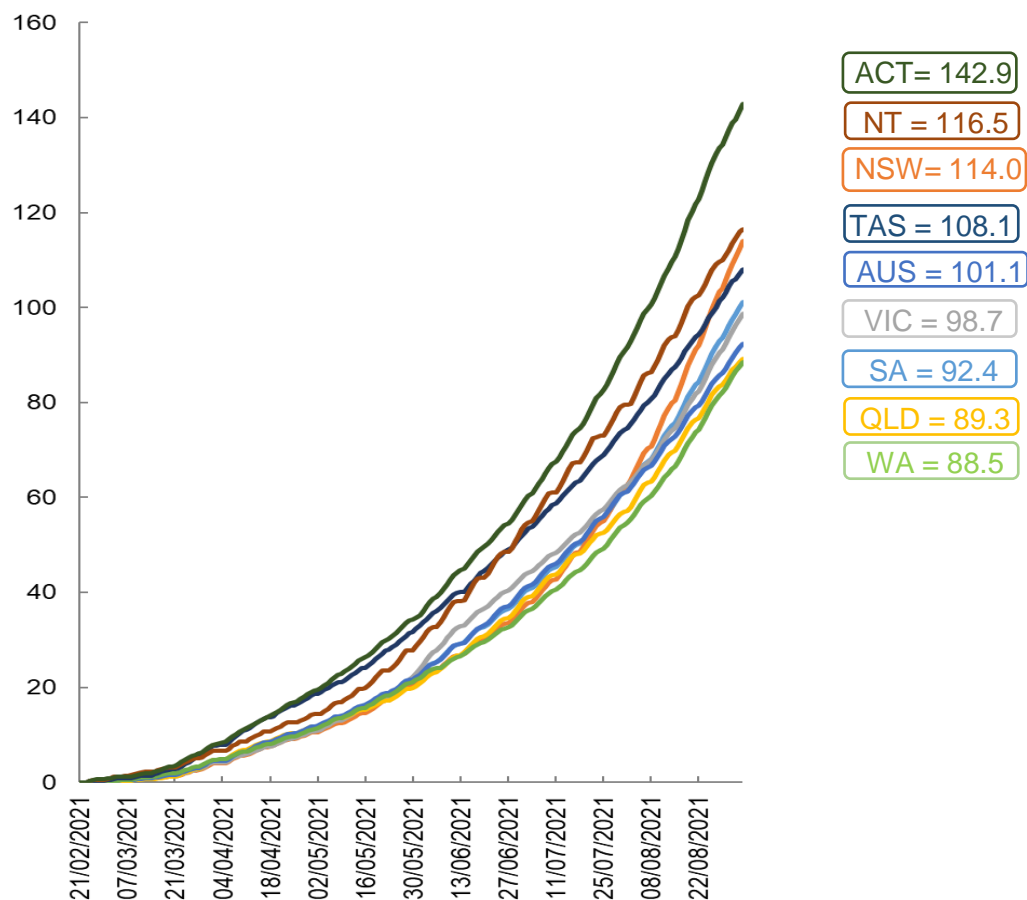
|                           | AUS         | ACT     | NSW       | NT      | QLD       | SA        | TAS     | VIC       | WA        |
|---------------------------|-------------|---------|-----------|---------|-----------|-----------|---------|-----------|-----------|
| 16 and over - dose 1      | 12,938,761  | 237,037 | 4,828,724 | 109,119 | 2,183,017 | 796,494   | 275,709 | 3,260,296 | 1,129,327 |
| 16 and over - dose 2      | 7,879,487   | 157,819 | 2,678,906 | 76,853  | 1,419,178 | 534,320   | 199,599 | 2,033,306 | 723,398   |
| 16 and over - population  | 20,619,959* | 344,037 | 6,565,651 | 190,571 | 4,112,707 | 1,440,400 | 440,172 | 5,407,574 | 2,114,978 |
| 16 and over % with dose 1 | 62.75%      | 68.90%  | 73.55%    | 57.26%  | 53.08%    | 55.30%    | 62.64%  | 60.29%    | 53.40%    |
| 16 and over % with dose 2 | 38.21%      | 45.87%  | 40.80%    | 40.33%  | 34.51%    | 37.10%    | 45.35%  | 37.60%    | 34.20%    |
| 50 and over - dose 1      | 7,095,428   | 121,028 | 2,413,081 | 44,077  | 1,330,633 | 511,969   | 177,422 | 1,795,453 | 658,309   |
| 50 and over - dose 2      | 4,940,518   | 89,085  | 1,635,222 | 32,273  | 923,571   | 347,140   | 133,716 | 1,288,570 | 465,034   |
| 50 and over - population  | 8,749,703   | 127,802 | 2,807,793 | 62,280  | 1,758,855 | 674,384   | 220,036 | 2,211,211 | 885,370   |
| 50 and over % with dose 1 | 81.09%      | 94.70%  | 85.94%    | 70.77%  | 75.65%    | 75.92%    | 80.63%  | 81.20%    | 74.35%    |
| 50 and over % with dose 2 | 56.46%      | 69.71%  | 58.24%    | 51.82%  | 52.51%    | 51.48%    | 60.77%  | 58.27%    | 52.52%    |
| 70 and over - dose 1      | 2,609,163   | 40,352  | 881,387   | 9,651   | 501,563   | 205,718   | 69,162  | 646,494   | 236,021   |
| 70 and over - dose 2      | 1,953,597   | 31,802  | 651,833   | 7,454   | 378,301   | 147,331   | 54,443  | 491,227   | 177,974   |
| 70 and over - population  | 2,934,706   | 39,946  | 962,606   | 12,343  | 577,767   | 240,514   | 77,155  | 743,519   | 280,281   |
| 70 and over % with dose 1 | 88.91%      | >95%    | 91.56%    | 78.19%  | 86.81%    | 85.53%    | 89.64%  | 86.95%    | 84.21%    |
| 70 and over % with dose 2 | 66.57%      | 79.61%  | 67.72%    | 60.39%  | 65.48%    | 61.26%    | 70.56%  | 66.07%    | 63.50%    |

\*National population will not equal sum of listed jurisdictions due to a small number of people counted in national population residing in some 'other' territories

Doses sourced from Australian Immunisation Register, population from ABS ERP June 2020

# Vaccinations by location

Cumulative total doses administered vs state populations\*

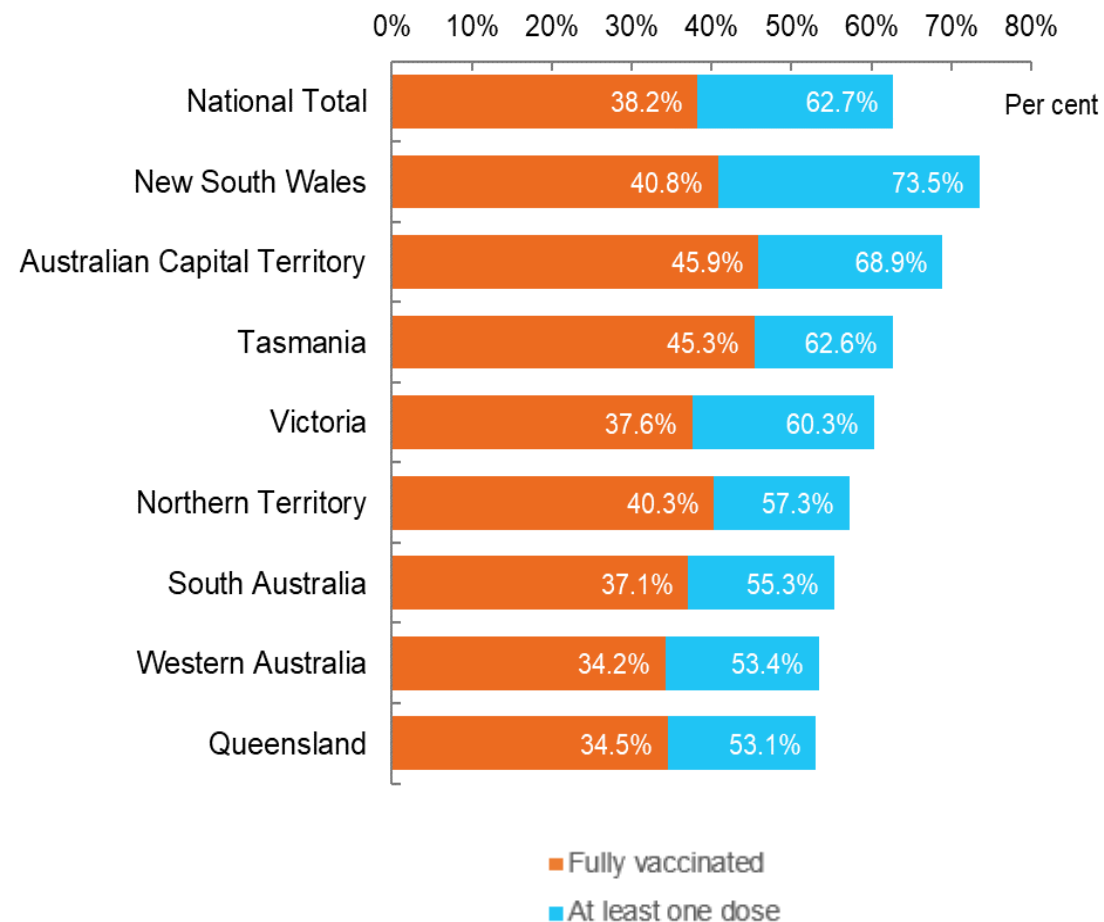


\*Not an indication of percentage vaccinated, numbers will exceed 100 due to multiple doses required per person of the population

Data as at:  
04 Sep 2021

Australia's COVID-19  
Vaccine Roadmap

First and Second Doses by state of residence



# Aboriginal and Torres Strait Islander peoples

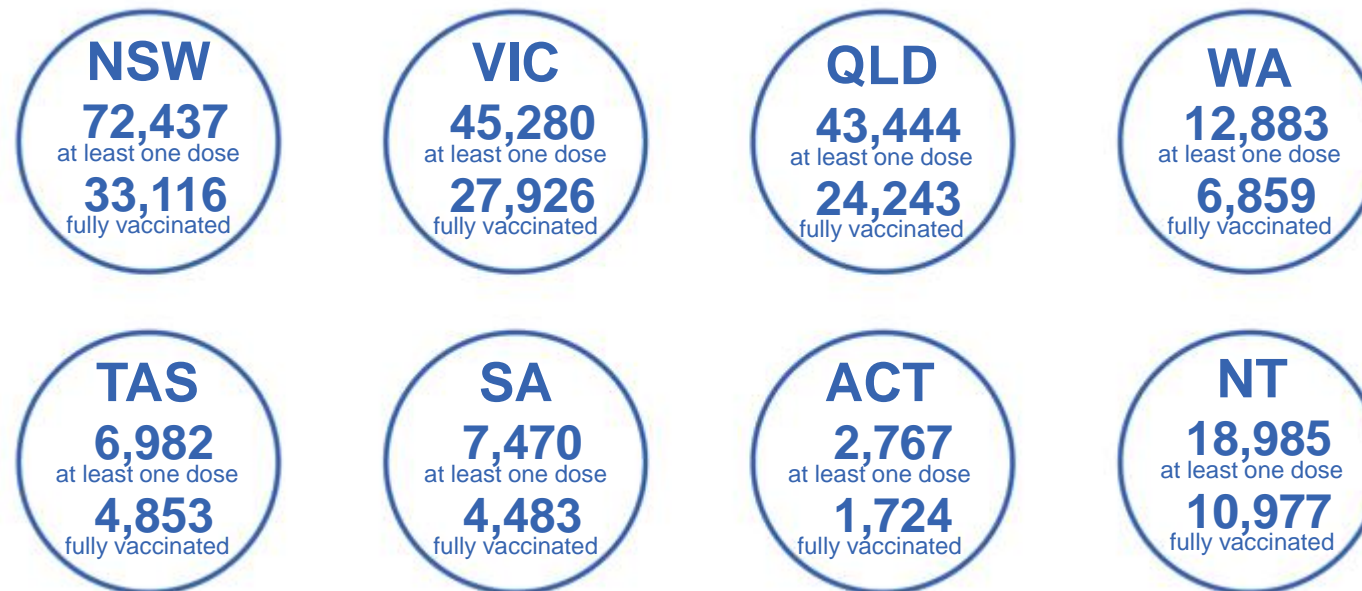
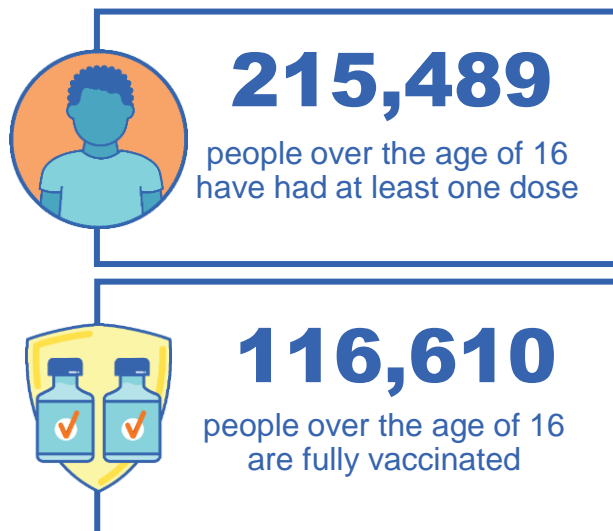
## Number of people vaccinated

Data as at:  
29 Aug 2021  
Updated weekly  
Data reconciliation underway

Australia's COVID-19  
Vaccine Roadmap

### 162 Aboriginal community controlled health services (ACCHS)

| 0#  | 45  | 26 | 38  | 11 | 3   | 21  | 18 |
|-----|-----|----|-----|----|-----|-----|----|
| ACT | NSW | NT | QLD | SA | TAS | VIC | WA |



**5,241** people with at least one dose  
**2,429** people fully vaccinated

residing in other territories or with missing residential information

Source: Australian Immunisation Register

\*Identifying as Aboriginal and Torres Strait Islander is optional and the estimated population may be under reported.

\*\*Includes all Aboriginal and Torres Strait Islander peoples who have received a vaccination, not limited to those administered in an ACCHS setting

\*\*\*Updated weekly.

#ACCHS in the ACT are currently operating as a Commonwealth Vaccine Clinics so not included to avoid double counting

Data as at:  
04 Sep 2021

# Commonwealth primary care



## Primary care vaccine administration sites

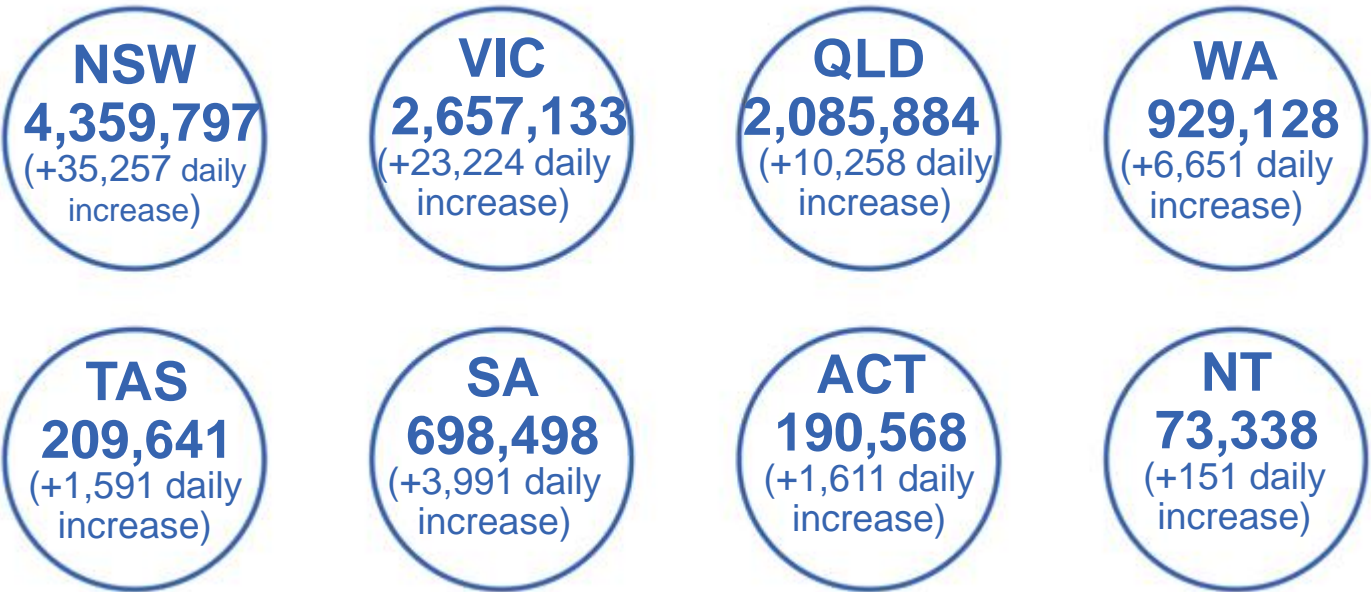
|              |            |            |              |
|--------------|------------|------------|--------------|
| <b>5,343</b> | <b>137</b> | <b>162</b> | <b>2,925</b> |
| GPs          | CVCs       | ACCHS      | Pharmacies   |



**11,261,459** total vaccine doses administered primary care settings as at 04 September  
**+ 83,164** recorded in the last 24 hours

## Primary care vaccinations by provider type

|  | Doses administered | Daily increase | 7 day increase |
|--|--------------------|----------------|----------------|
| General Practice*<br>includes other Commonwealth | 10,873,596         | 74,730         | 903,396        |
| Pharmacy   | 387,863            | 8,434          | 97,251         |



**57,472** doses administered to persons residing in other territories or with missing residential information

\*General practice includes Commonwealth Vaccination Clinics, Aboriginal Community Health Centres, Royal Flying Doctor Service and other Commonwealth vaccination facilities

Source: Australian Immunisation Register

Data as at:  
04 Sep 2021

# Commonwealth aged care and disability doses administered



People vaccinated in aged care  
and residential disability facilities

**465,426**

People with a first dose

**332,367**

People fully vaccinated

Residential aged care  
facilities

**2,569**

Sites visited for first doses

**2,568**

Sites visited for second doses



**798,991**

(+ 5,473 last 24 hours)

Total vaccine doses administered in aged care  
and disability facilities as at 04 September

Number of doses administered as part of the Commonwealth aged and disability care rollout

**NSW**

**365,800**

(+2,703 daily  
increase)

**VIC**

**156,951**

(+959 daily  
increase)

**QLD**

**119,332**

(+952 daily  
increase)

**WA**

**55,305**

(+461 daily  
increase)

**TAS**

**15,822**

(+50 daily  
increase)

**SA**

**49,846**

(+241 daily  
increase)

**ACT**

**9,533**

(+46 daily  
increase)

**NT**

**5,291**

(+16 daily  
increase)

**21,111**

doses administered to persons  
residing in other territories or with  
missing residential information

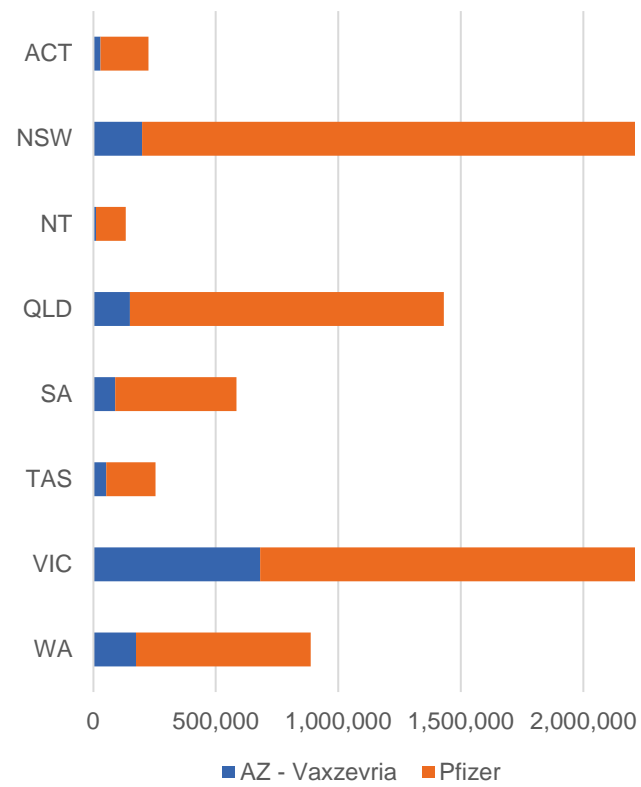
\*Sourced from the Australian Immunisation Register. Includes all persons vaccinated at participating residential aged care, disability and related industry settings.

\*\*State level breakdown indicates the residential location and may not align to the state in which the vaccination occurred.

Data as at:  
04 Sep 2021

# Jurisdiction administered

Total vaccine doses administered in State and Territory clinics as at 04 September



**8,794,903** total vaccine doses administered in State and Territory clinics as at 04 September  
**+ 124,958** recorded in the last 24 hours  
**+ 909,976** recorded in the last 7 days

**NSW**  
**2,755,186**  
 (+56,625 daily increase)

**VIC**  
**2,525,987**  
 (+27,401 daily increase)

**QLD**  
**1,430,604**  
 (+19,767 daily increase)

**WA**  
**886,875**  
 (+10,466 daily increase)

**TAS**  
**253,889**  
 (+2,398 daily increase)

**SA**  
**584,054**  
 (+5,116 daily increase)

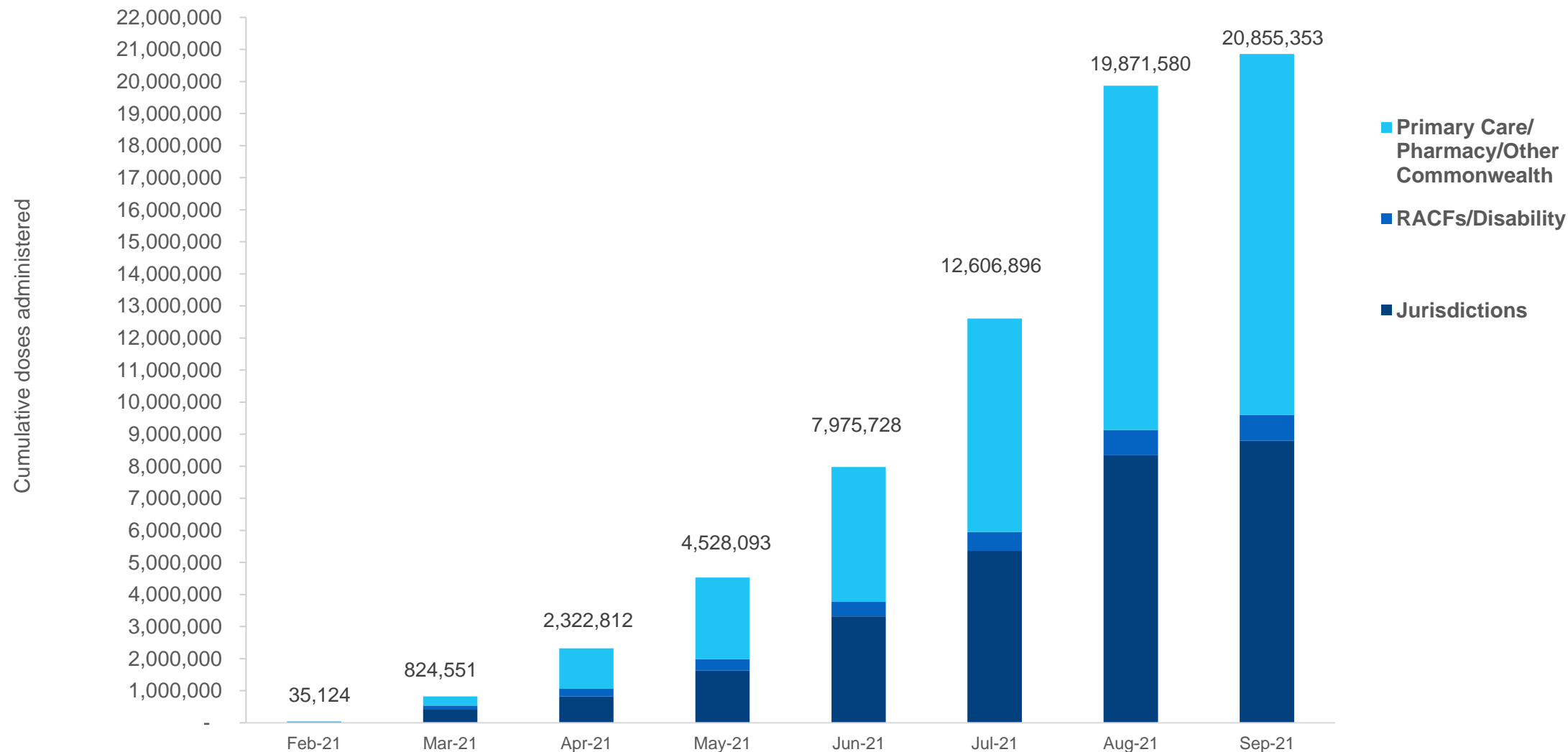
**ACT**  
**225,878**  
 (+2,357 daily increase)

**NT**  
**132,430**  
 (+828 daily increase)

\*Sourced from the Australian Immunisation Register and self-reported data. Numbers are calculated as difference in daily cumulative reported numbers to allow for historical corrections in all self-reported data sources.

## Cumulative doses administered by channel

Data as at:  
04 Sep 2021



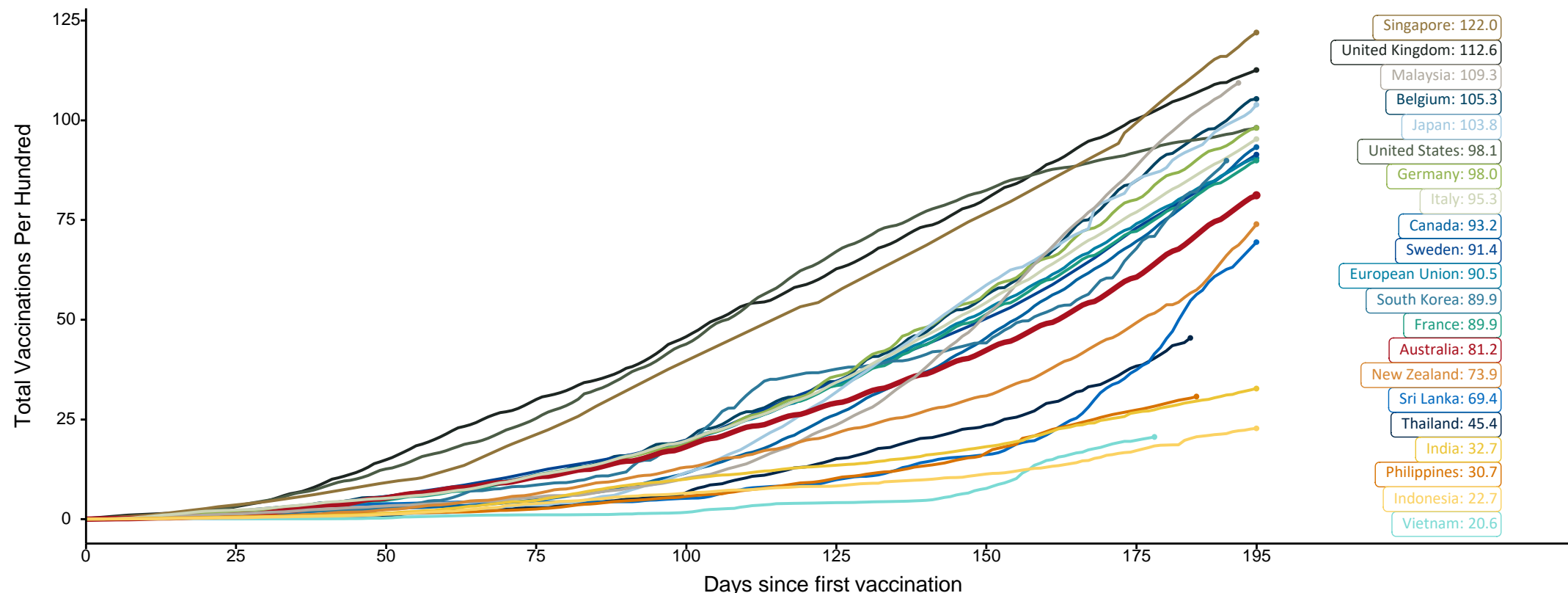
Source: Australian Immunisation Register

# Doses at equivalent stages of rollout (Day 195)

Data as at:  
04 Sep 2021

The x-axis is truncated at the length of Australia's vaccination program. Countries with intermittent reporting have had their doses per 100 imputed to Australia's current stage of rollout. Israel excluded as it is beyond scale of the graph

Cumulative doses administered (04 Sep): **20,855,353**

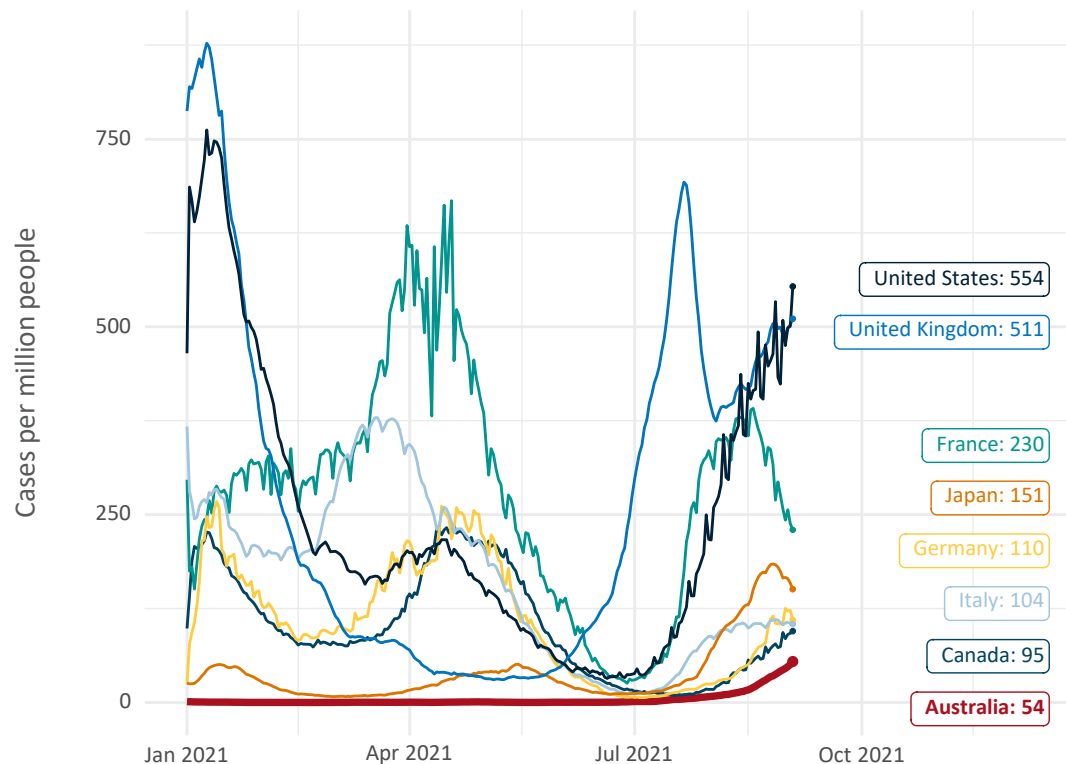


Source: Department of Health (Australia), Our World in Data (international)  
Latest data: 04 September

# International data – COVID-19

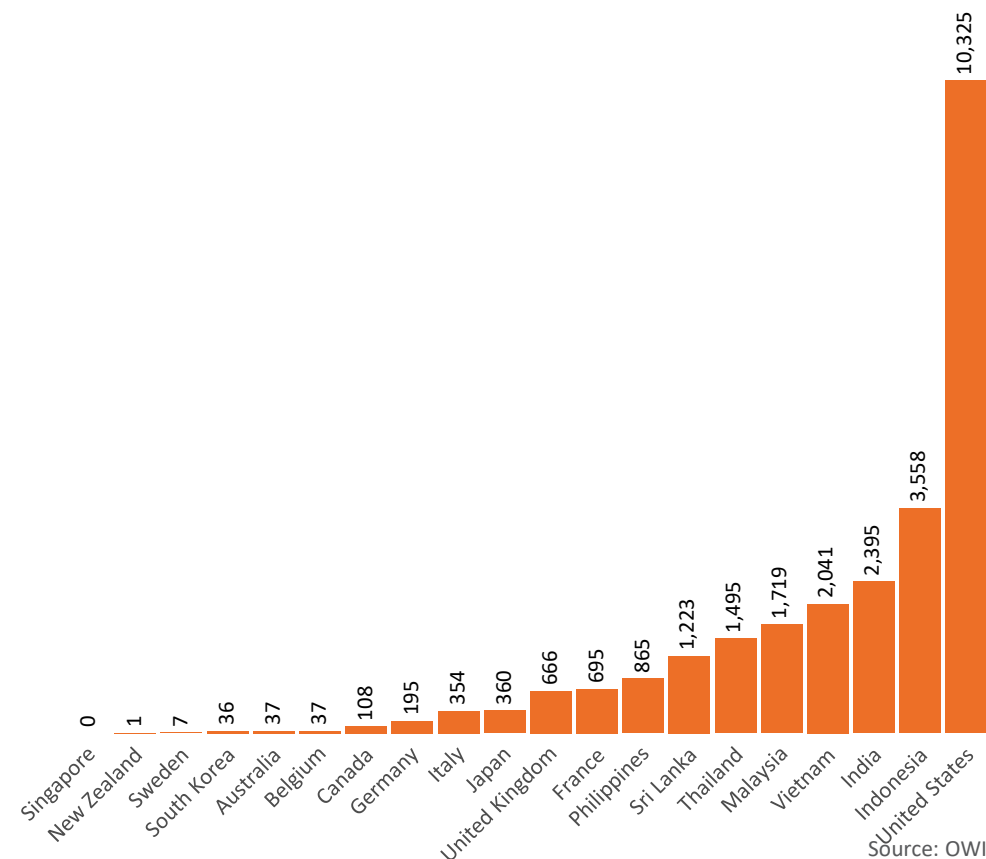
Data as at:  
04 Sep 2021

New daily cases per million in 2021, Australia and G7 countries  
Smoothed - 7 day average



Source: OWID  
Data downloaded: 05 Sep 2021 11:34  
Latest data: 03 Sep 2021

COVID-19 deaths in past 7 days - Australia and select countries



Source: OWID  
Data downloaded: 05 Sep 2021 11:34  
Latest data: 03 Sep 2021

# Pandemic Response Payments

Australia's COVID-19  
Vaccine Roadmap

Data as at midnight:  
4 Sep 2021



**1.94 million**

People have received at least one COVID  
Disaster Payment (including ISP200)

**\$5.64 billion**

Paid Out as at 4 Sep 2021

**3.19 million**

Claims granted across  
three different payments



**93%**

of Claims  
Received Digitally



**COVID Disaster Payment:**

3.16 million claims received - 1.79 million individuals paid a total of \$5.48 billion.

**\$200 Income Support Payment:**

183,000 claims received - 144,000 individuals paid a total of \$95.22 million.

**Pandemic Leave Disaster Payment:**

51,000 claims received - 44,000 individuals paid a total of \$70.01 million.



**THREE  
PAYMENTS  
AVAILABLE**

## COVID Disaster Payment

assisting during a lockdown  
event in a Commonwealth  
hotspot.

## Income Support Payment \$200

for income support  
recipients who lost at  
least 8 hours of work.

## Pandemic Leave Disaster Payment

for those who have  
to self-isolate,  
quarantine or care.

For more information visit:  
[servicesaustralia.gov.au](https://servicesaustralia.gov.au)

## COVID-19 DISASTER PAYMENTS

### New South Wales

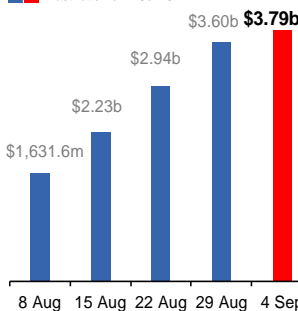
Active lockdown since 24 Jun

**994,000 people have  
received at least one  
COVID Disaster Payment.**

**\$3.79b paid out as at  
4 Sep 2021.**

**\$657m paid in initial and  
reoccurring payments in the  
week ending 29 Aug 2021.**

Cumulative payments made by State since  
activation on 1 Jul 2021.



### Victoria

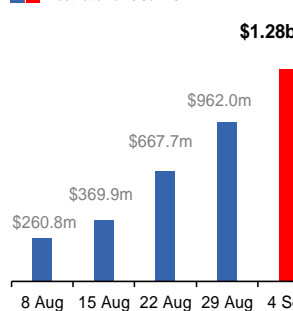
Active lockdown (#6) since 6 Aug

**462,000 people have  
received at least one  
COVID Disaster Payment.**

**\$1.28b paid out as at  
4 Sep 2021.**

**\$294m paid in initial and  
reoccurring payments in the  
week ending 29 Aug 2021.**

Cumulative payments made by State since  
activation on 8 Jun 2021.



### Australian Capital Territory

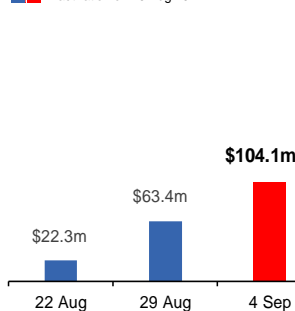
Active lockdown since 12 Aug

**55,000 people have  
received at least one  
COVID Disaster Payment.**

**\$104.1m paid out as at  
4 Sep 2021.**

**\$41m paid in initial and  
reoccurring payments in the  
week ending 29 Aug 2021.**

Cumulative payments made by State since  
activation on 20 Aug 2021.



### Northern Territory

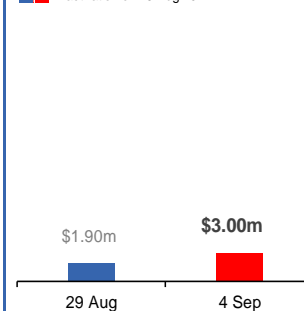
Lockdown from 18 – 20 Jul  
Claiming period ends 13 Sep

**4,614 people have  
received at least one  
COVID Disaster Payment.**

**\$3.00m paid out as at  
4 Sep 2021.**

**\$1.91m paid in initial  
payments in the week  
ending 29 Aug 2021.**

Cumulative payments made by State since  
activation on 25 Aug 2021.



### Queensland

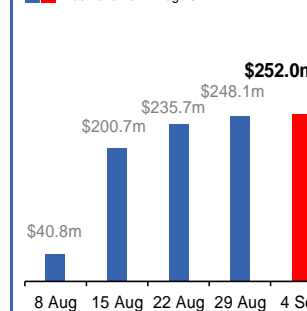
Lockdown from 31 Jul – 11 Aug  
Claiming period ended 28 Aug

**195,000 people have  
received at least one  
COVID Disaster Payment.**

**\$252.0m paid out as at  
4 Sep 2021.**

**\$12m paid in initial and  
reoccurring payments in the  
week ending 29 Aug 2021.**

Cumulative payments made by State since  
activation on 7 Aug 2021.



### South Australia

Lockdown from 21 – 27 Jul  
Claiming period ended 17 Aug

**86,000 people have  
received at least one  
COVID Disaster Payment.**

**\$48.2m paid out as at  
4 Sep 2021.**

**\$43,000 paid in initial  
payments in the week  
ending 29 Aug 2021.**

Cumulative payments made by State since  
activation on 28 Jul 2021.

