



Australian Government
Operation COVID Shield

COVID-19 Vaccine Rollout

30 September 2021

Data as at:
29 Sept 2021

Total vaccine doses



27,750,501 total vaccine doses administered nationally as at 29 September
+308,805 recorded in the last 24 hours



16,052,198

people have had at least one dose

77.8%

of people over the age of 16 have had at least one dose



11,176,598

people are fully vaccinated

54.2%

of people over the age of 16 are fully vaccinated

NSW
10,077,159
(+114,338 daily increase)

VIC
7,248,276
(+84,711 daily increase)

QLD
4,778,597
(+51,838 daily increase)

WA
2,397,174
(+26,534 daily increase)

TAS
596,061
(+4,803 daily increase)

SA
1,705,268
(+18,140 daily increase)

ACT
677,600
(+6,149 daily increase)

NT
270,366
(+2,292 daily increase)

*Administration state breakdown indicates state in which a vaccine was administered

**Overall dose count includes instances of more than two doses per person in a small number of cases.

Data as at:
29 Sept 2021

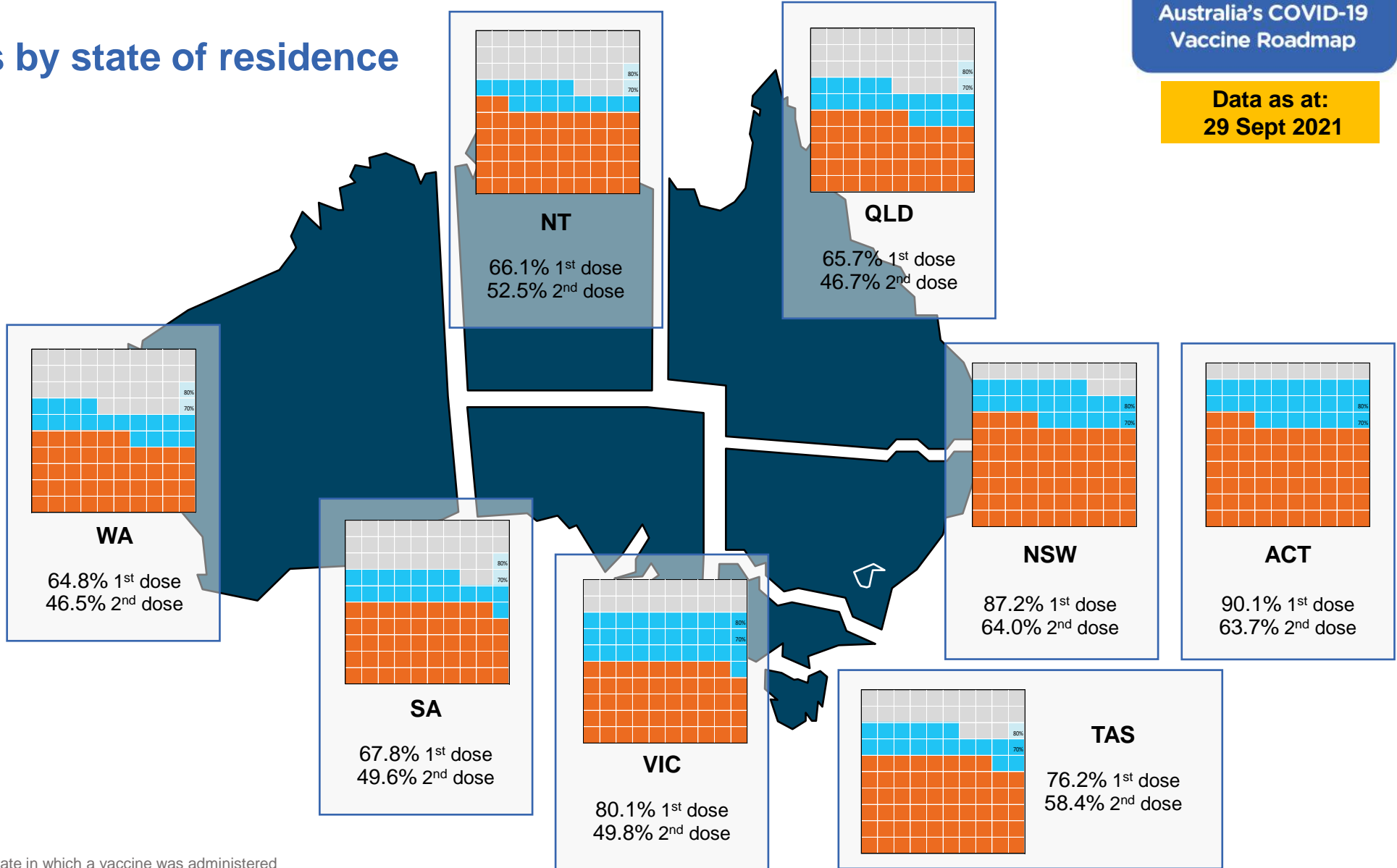
Vaccinations by state of residence

First doses

Age	Today	4 weeks ago	8 weeks ago
16+	77.8%	61.3%	43.3%
50+	89.1%	80.5%	68.4%
70+	94.6%	89.0%	81.9%

Fully vaccinated

Age	Today	4 weeks ago	8 weeks ago
16+	54.2%	37.0%	21.5%
50+	71.3%	54.9%	30.5%
70+	78.5%	65.8%	46.3%



*Residential state may differ from the state in which a vaccine was administered

Commonwealth and Jurisdiction vaccine doses administered

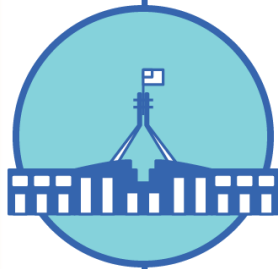
Data as at:
29 Sept 2021



27,750,501 total vaccine doses administered nationally as at 29 September
+ **308,805** recorded in the last 24 hours



11,744,471 doses administered by state and territory facilities
+ **107,772** recorded in the last 24 hours



16,006,030 doses administered by commonwealth facilities
+ **201,033** recorded in the last 24 hours

15,018,109 total vaccine doses administered in primary care settings
987,921 total vaccine doses administered in aged care and disability settings

NSW	Jurisdictions	Commonwealth
Cumulative	3,546,060	6,531,099
Daily increase	27,637	86,701

VIC	Jurisdictions	Commonwealth
Cumulative	3,483,015	3,765,261
Daily increase	32,717	51,994

QLD	Jurisdictions	Commonwealth
Cumulative	1,947,115	2,831,482
Daily increase	20,554	31,284

WA	Jurisdictions	Commonwealth
Cumulative	1,167,143	1,230,031
Daily increase	11,154	15,380

TAS	Jurisdictions	Commonwealth
Cumulative	328,606	267,455
Daily increase	3,047	1,756

SA	Jurisdictions	Commonwealth
Cumulative	780,763	924,505
Daily increase	8,561	9,579

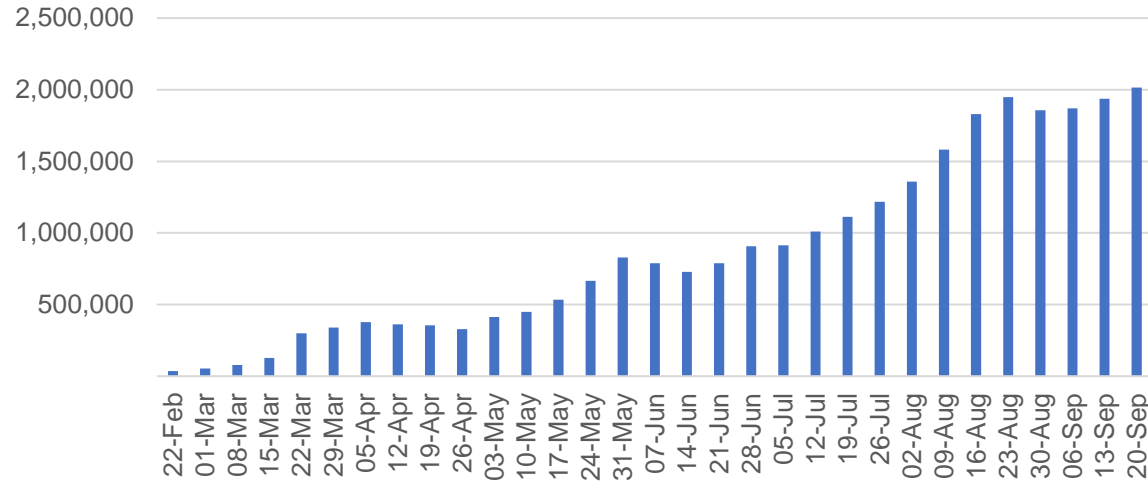
ACT	Jurisdictions	Commonwealth
Cumulative	328,411	349,189
Daily increase	2,727	3,422

NT	Jurisdictions	Commonwealth
Cumulative	163,358	107,008
Daily increase	1,375	917

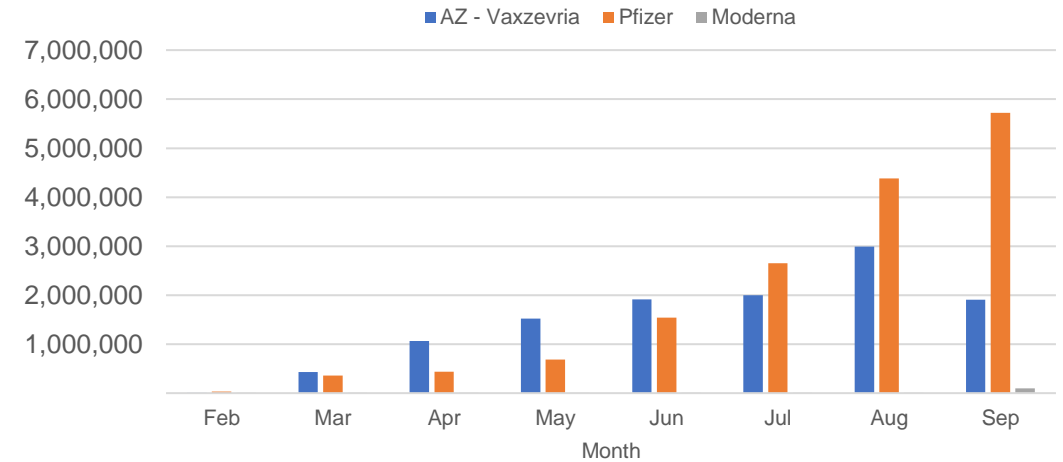
Vaccine milestone charts

Data as at: 29 Sept 2021

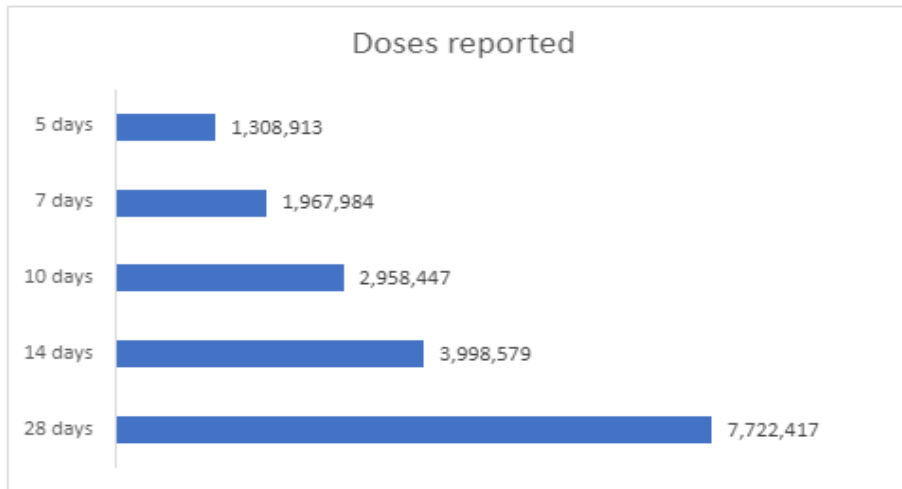
Jabs in arms by week



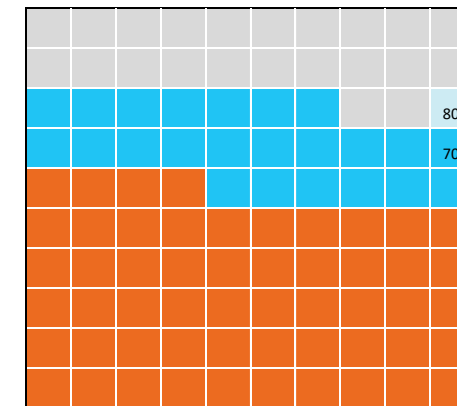
Doses by administration month and vaccine type



Doses reported



Eligible population percentage coverage



1st dose: 77.8% 2nd dose: 54.2%

*Each square represents 1% of the national population. Squares are filled as milestones are achieved.

*Sourced from the Australian Immunisation Register.

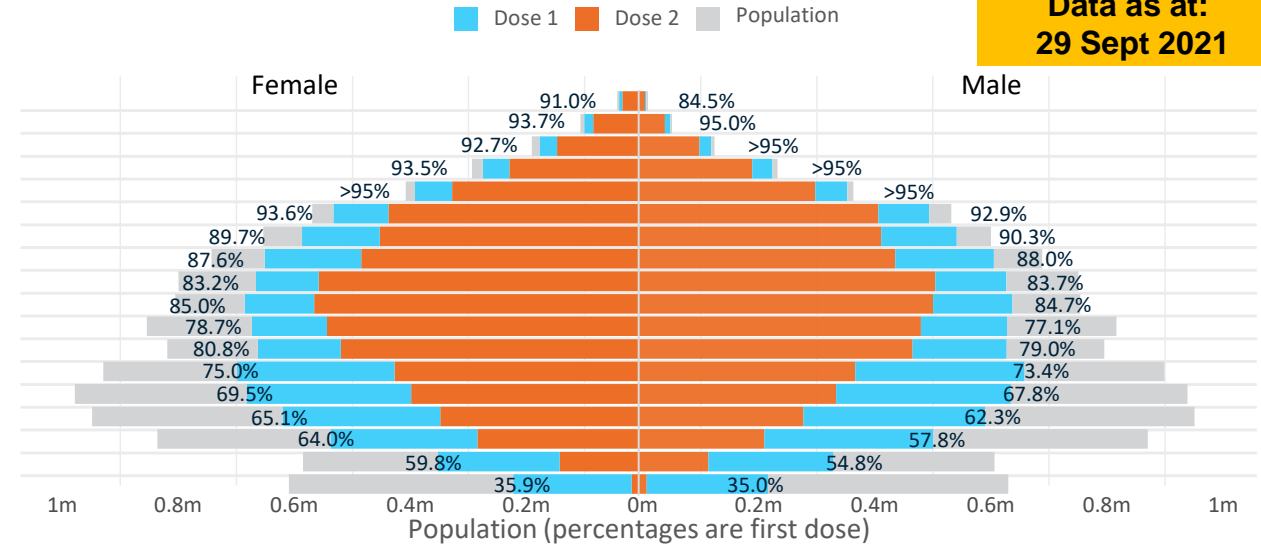
Doses by age and sex

First and second doses by age and sex

	AUS	16+	50+	70+	12-15
Dose 1	77.85% (16,052,198 doses / 20,619,959 people)	89.14% (7,799,164 doses / 8,749,703 people)	94.56% (2,774,961 doses / 2,934,706 people)	35.44% (440,846 doses / 1,243,990 people)	
Dose 2	54.20% (11,176,598 doses / 20,619,959 people)	71.25% (6,234,353 doses / 8,749,703 people)	78.54% (2,304,999 doses / 2,934,706 people)	0.68% (26,040 doses / 1,243,990 people)	

Data as at: 29 Sept 2021

Age	Dose 1	Dose 2
95+	47,245 (89.3%)	39,204 (74.1%)
90-94	149,316 (94.3%)	124,104 (78.3%)
85-89	297,381 (94.1%)	246,490 (78.0%)
80-84	501,540 (94.9%)	419,719 (79.4%)
75-79	748,298 (>95%)	628,293 (81.2%)
70-74	1,031,181 (93.3%)	847,189 (76.7%)
65-69	1,133,803 (90.1%)	867,483 (68.9%)
60-64	1,262,549 (87.9%)	924,559 (64.4%)
55-59	1,298,937 (83.5%)	1,066,676 (68.6%)
50-54	1,328,914 (84.9%)	1,070,636 (68.4%)
45-49	1,307,044 (78.0%)	1,027,663 (61.3%)
40-44	1,296,534 (80.0%)	989,710 (61.1%)
35-39	1,365,671 (74.4%)	798,477 (43.5%)
30-34	1,327,420 (69.0%)	737,999 (38.4%)
25-29	1,224,244 (64.2%)	632,105 (33.2%)
20-24	1,047,107 (61.2%)	498,586 (29.1%)
16-19	685,014 (57.3%)	257,705 (21.6%)
12-15	440,846 (35.44%)	26,040 (0.68%)

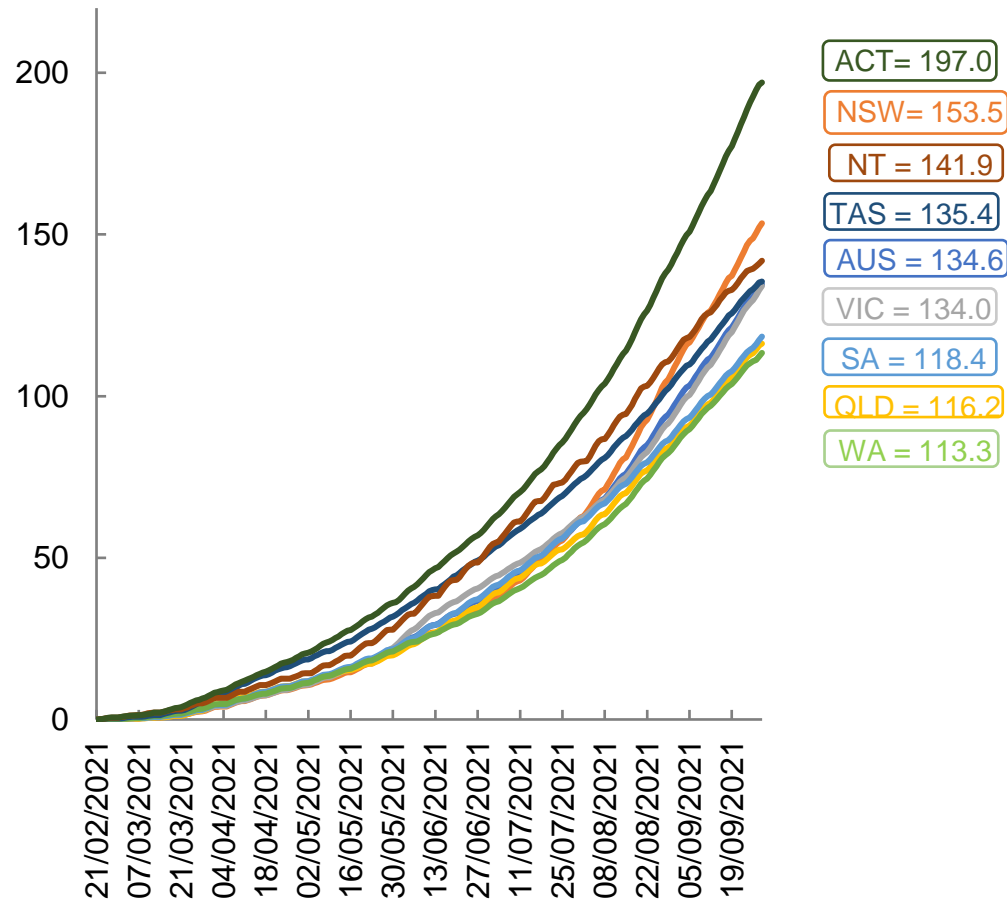


	AUS	ACT	NSW	NT	QLD	SA	TAS	VIC	WA
16 and over - dose 1	16,052,198	310,005	5,724,869	125,979	2,703,004	976,620	335,626	4,331,517	1,371,223
16 and over - dose 2	11,176,598	219,298	4,204,036	100,011	1,922,356	714,119	257,007	2,693,772	982,412
16 and over - population	20,619,959*	344,037	6,565,651	190,571	4,112,707	1,440,400	440,172	5,407,574	2,114,978
16 and over % with dose 1	77.85%	90.11%	87.19%	66.11%	65.72%	67.80%	76.25%	80.10%	64.83%
16 and over % with dose 2	54.20%	63.74%	64.03%	52.48%	46.74%	49.58%	58.39%	49.81%	46.45%
50 and over - dose 1	7,799,164	128,300	2,636,678	48,029	1,464,493	565,197	193,009	1,984,589	730,540
50 and over - dose 2	6,234,353	111,351	2,151,260	39,689	1,141,918	436,151	160,319	1,592,760	568,842
50 and over - population	8,749,703	127,802	2,807,793	62,280	1,758,855	674,384	220,036	2,211,211	885,370
50 and over % with dose 1	89.14%	>95%	93.91%	77.12%	83.26%	83.81%	87.72%	89.75%	82.51%
50 and over % with dose 2	71.25%	87.13%	76.62%	63.73%	64.92%	64.67%	72.86%	72.03%	64.25%
70 and over - dose 1	2,774,961	41,976	934,647	10,294	528,605	219,913	72,710	693,752	253,289
70 and over - dose 2	2,304,999	36,907	790,623	8,548	435,254	174,185	61,640	578,634	204,354
70 and over - population	2,934,706	39,946	962,606	12,343	577,767	240,514	77,155	743,519	280,281
70 and over % with dose 1	94.56%	>95%	>95%	83.40%	91.49%	91.43%	94.24%	93.31%	90.37%
70 and over % with dose 2	78.54%	92.39%	82.13%	69.25%	75.33%	72.42%	79.89%	77.82%	72.91%
12 to 15 - dose 1	440,846	9,994	196,839	3,974	60,483	12,813	3,594	132,706	17,846
12 to 15 - dose 2	26,040	587	14,480	1,355	4,313	460	453	3,500	701
12 to 15 - population	1,243,990	19,693	390,330	13,060	270,146	82,747	26,308	308,611	132,869
12 to 15 % with dose 1	35.44%	50.75%	50.43%	30.43%	22.39%	15.48%	13.66%	43.00%	13.43%
12 to 15 % with dose 2	0.68%	0.90%	1.19%	2.76%	0.52%	0.19%	0.51%	0.40%	0.17%

*National population will not equal sum of listed jurisdictions due to a small number of people counted in national population residing in some 'other' territories. Sum of state doses will not add to national total as some records are unable to be geocoded to a State or Territory. Doses sourced from Australian Immunisation Register, population from ABS ERP June 2020

Vaccinations by location

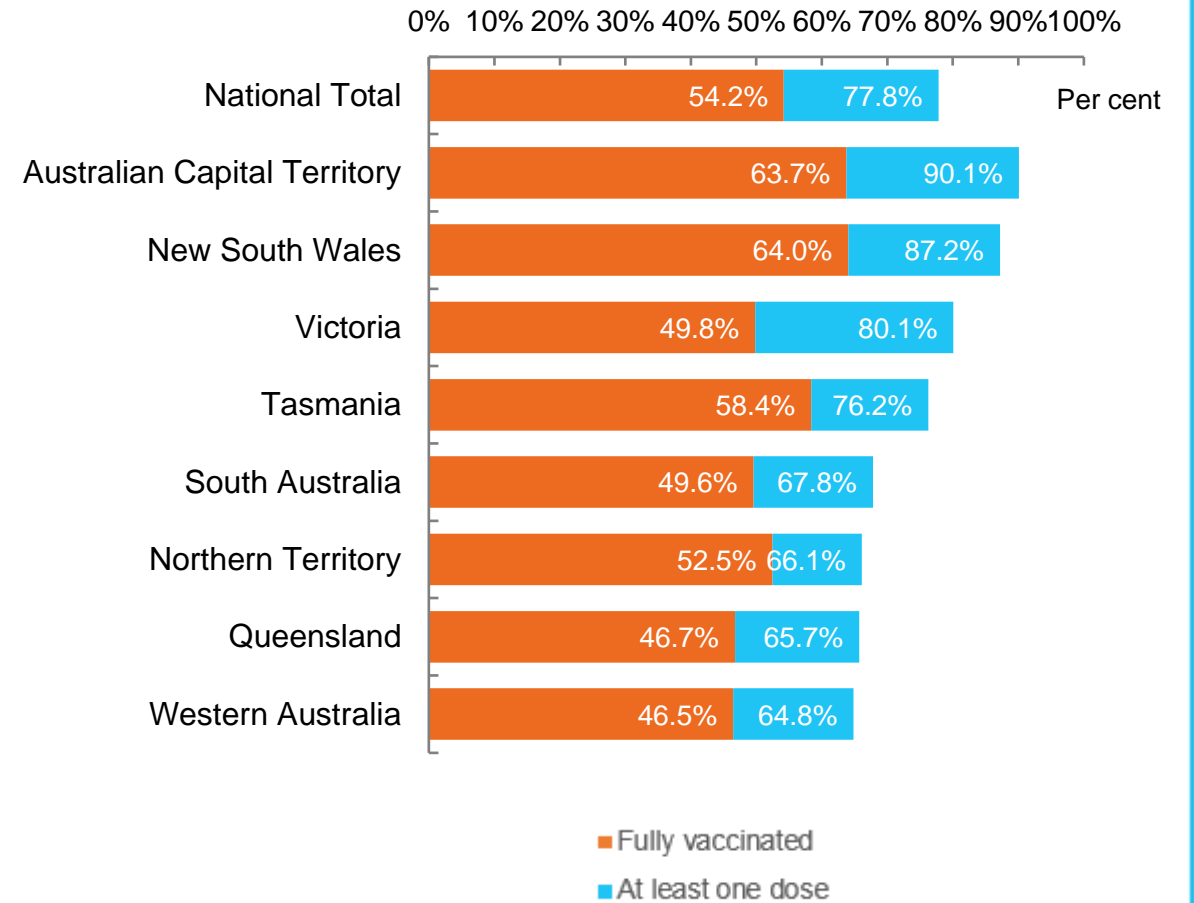
Cumulative total doses administered vs state populations*



Data as at:
29 Sept 2021

Australia's COVID-19
Vaccine Roadmap

First and Second Doses by state of residence



*Not an indication of percentage vaccinated, numbers will exceed 100 due to multiple doses required per person of the population

Aboriginal and Torres Strait Islander peoples

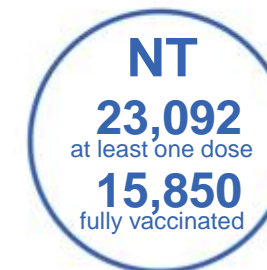
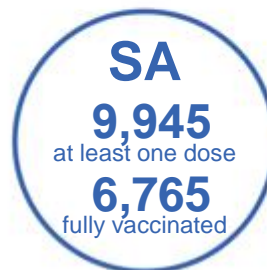
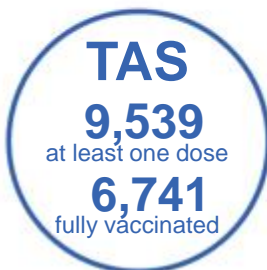
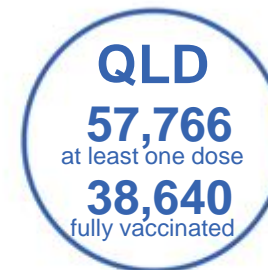
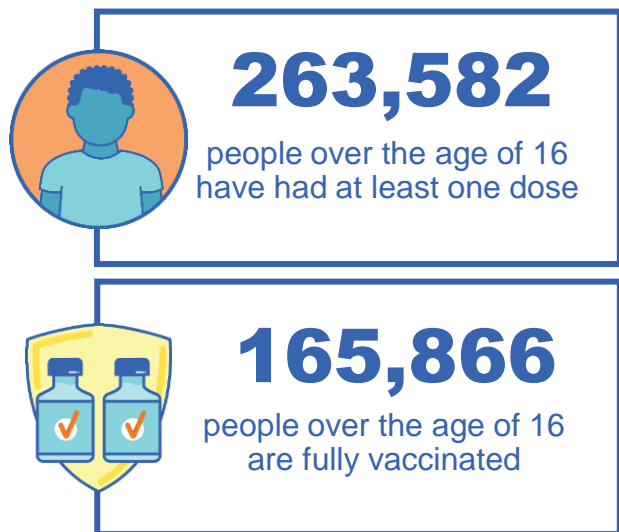
Number of people vaccinated

Data as at:
26 Sept 2021
Updated weekly

Australia's COVID-19
Vaccine Roadmap

167 Aboriginal community controlled health services (ACCHS)

0#	48	26	39	12	3	21	18
ACT	NSW	NT	QLD	SA	TAS	VIC	WA



7,142 people with at least one dose
3,917 people fully vaccinated

residing in other territories or with missing residential information

Source: Australian Immunisation Register

*Identifying as Aboriginal and Torres Strait Islander is optional and the estimated population may be under reported.

**Includes all Aboriginal and Torres Strait Islander peoples who have received a vaccination, not limited to those administered in an ACCHS setting

***Updated weekly.

#ACCHS in the ACT are currently operating as a Commonwealth Vaccine Clinics so not included to avoid double counting

Data as at:
29 Sept 2021

Commonwealth primary care



Primary care vaccine administration sites

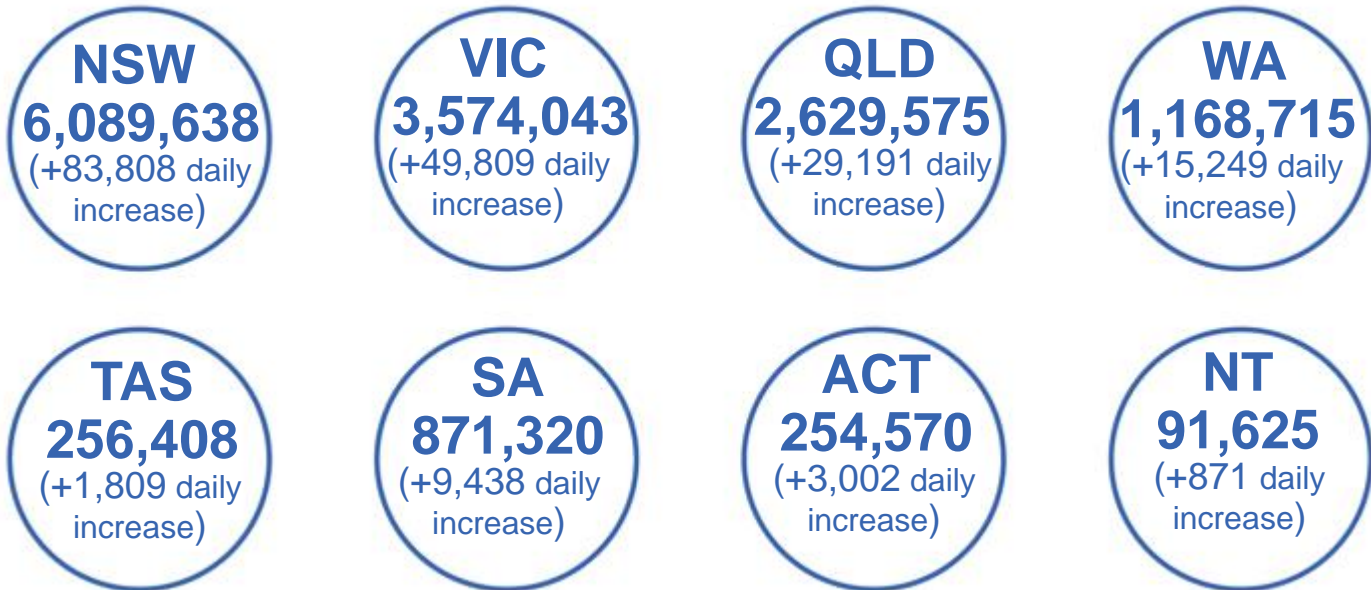
5,497	137	167	4,183
GPs	CVCs	ACCHS	Pharmacies



15,018,109 total vaccine doses administered primary care settings as at 29 September
+ 194,789 recorded in the last 24 hours

Primary care vaccinations by provider type

	Doses administered	Daily increase	7 day increase
General Practice* includes other Commonwealth	14,228,513	160,867	981,562
Pharmacy	789,596	33,922	164,998



82,215 doses administered to persons residing in other territories or with missing residential information

*General practice includes Commonwealth Vaccination Clinics, Aboriginal Community Health Centres, Royal Flying Doctor Service and other Commonwealth vaccination facilities

Source: Australian Immunisation Register

Commonwealth aged care and disability doses administered

Data as at:
29 Sept 2021

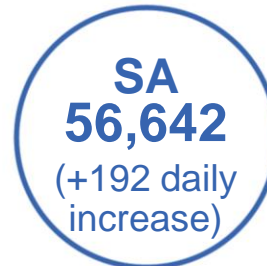
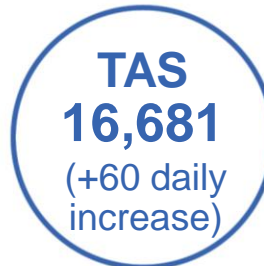


987,921

(+ 6,244 last 24 hours)

Total vaccine doses administered in aged care and disability facilities as at 29 September

Number of doses administered as part of the Commonwealth aged and disability care rollout



*Sourced from the Australian Immunisation Register. Includes all persons vaccinated at participating residential aged care, disability and related industry settings.
**State level breakdown indicates the residential location and may not align to the state in which the vaccination occurred.

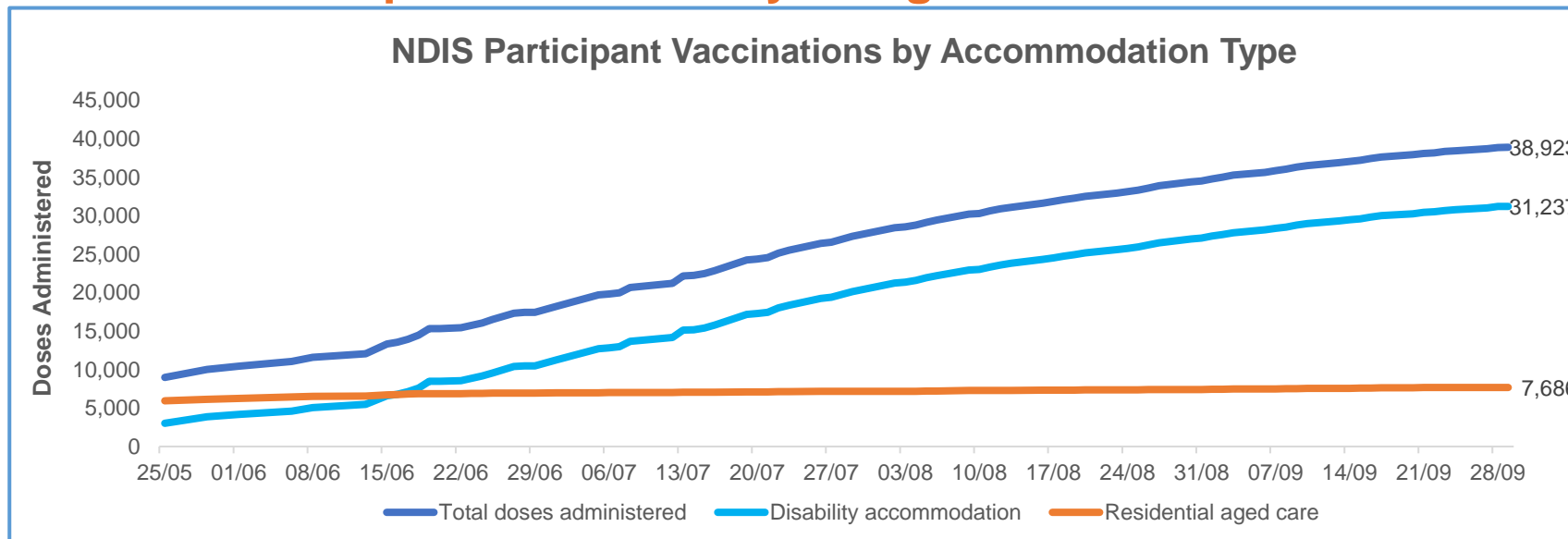
23,547

doses administered to persons residing in other territories or with missing residential information

Data as at:
29 Sept 2021*

Vaccination rate of people with disability and the disability workforce

Phase 1a – People with disability living in shared accommodation



	Total people with at least one dose	People fully vaccinated	Total number of individuals in cohort	Total doses administered	% People with at least one dose	% People fully vaccinated
NDIS participants living in shared accommodation **	20,619	18,304	27,293	38,923	75.5%	67.1%
NDIS screened workers ***	148,168	118,849	200,500	267,017	73.9%	59.3%



* Updates are available Monday to Friday on participants, and bi-weekly for workers, numbers may be up to four days old.

** Shared accommodation means two or more people with disability living in shared residential accommodation and NDIS participants living in Residential Aged Care accommodation as per the eligibility criteria of Phase 1a.

*** Total number of workers within the NDIS Commission Worker Screening database who have ever been successfully screened and linked to an NDIS registered provider or participant.

Source: Linkage between National Disability Insurance Agency data, NDIS Quality and Safeguards Commission data and the Australian Immunisation Register.

Residential aged care vaccination rollout

Residential aged care facilities status

100% Commonwealth facilities visited (2,573 planned sites)

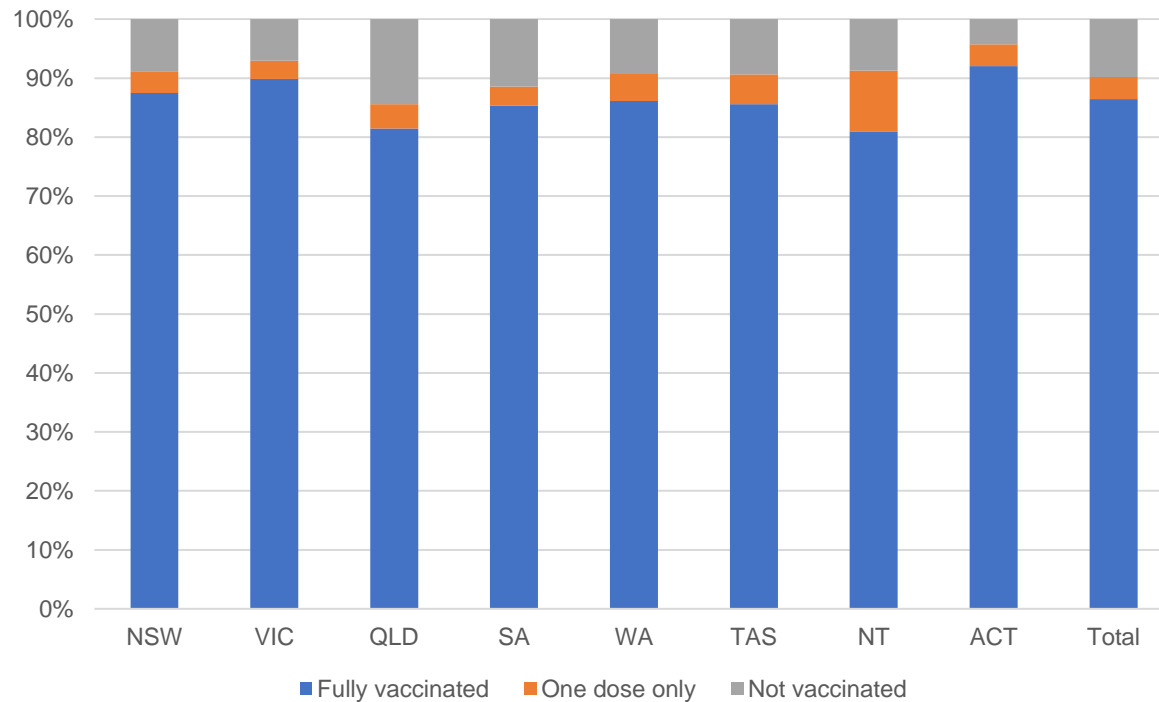
161,134 People fully vaccinated

90.2% Participation rate

Australia's COVID-19 Vaccine Roadmap

Data as at:
29 Sept 2021

Aged care resident vaccinations



Aged care worker vaccinations

Jurisdictions	Total workers with at least one dose	Workers fully vaccinated	% Workers with at least one dose	% Workers fully vaccinated
NSW	78,498	68,110	99.4%	86.2%
VIC	70,918	60,687	98.9%	84.7%
QLD	47,641	38,304	99.5%	80.0%
SA	26,760	22,863	99.5%	85.0%
WA	23,205	17,728	99.6%	76.1%
TAS	7,479	6,362	99.8%	84.9%
NT	801	769	99.3%	95.3%
ACT	2,932	2,622	99.8%	89.2%
Total	258,234	217,445	99.3%	83.6%

Source: My Aged Care Portal staff vaccination progress

**Resident vaccination information is reported manually by service providers

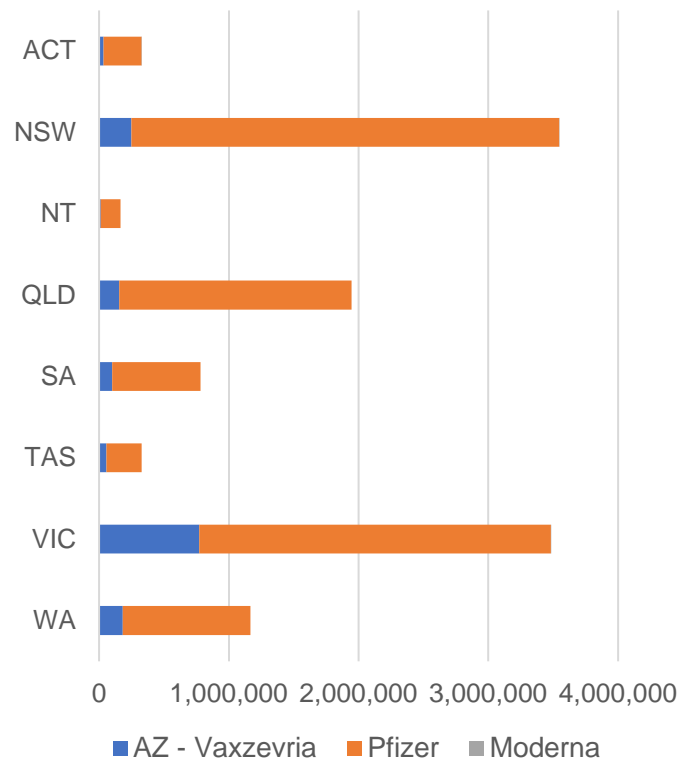
*Status updates are provided by facilities at least once per week. Reporting is updated Monday to Friday to encompass different facility updates being made on different days.

Data is sourced directly from Aged Care Service Providers and is not drawn or closely aligned with data from AIR due to inconsistencies and potential lags in uploading of records.

Data as at:
29 Sept 2021

Jurisdiction administered

Total vaccine doses administered in State and Territory clinics as at 29 September



11,744,471 total vaccine doses administered in State and Territory clinics as at 29 September
 + **107,772** recorded in the last 24 hours
 + **776,069** recorded in the last 7 days

NSW
3,546,060
 (+27,637 daily increase)

VIC
3,483,015
 (+32,717 daily increase)

QLD
1,947,115
 (+20,554 daily increase)

WA
1,167,143
 (+11,154 daily increase)

TAS
328,606
 (+3,047 daily increase)

SA
780,763
 (+8,561 daily increase)

ACT
328,411
 (+2,727 daily increase)

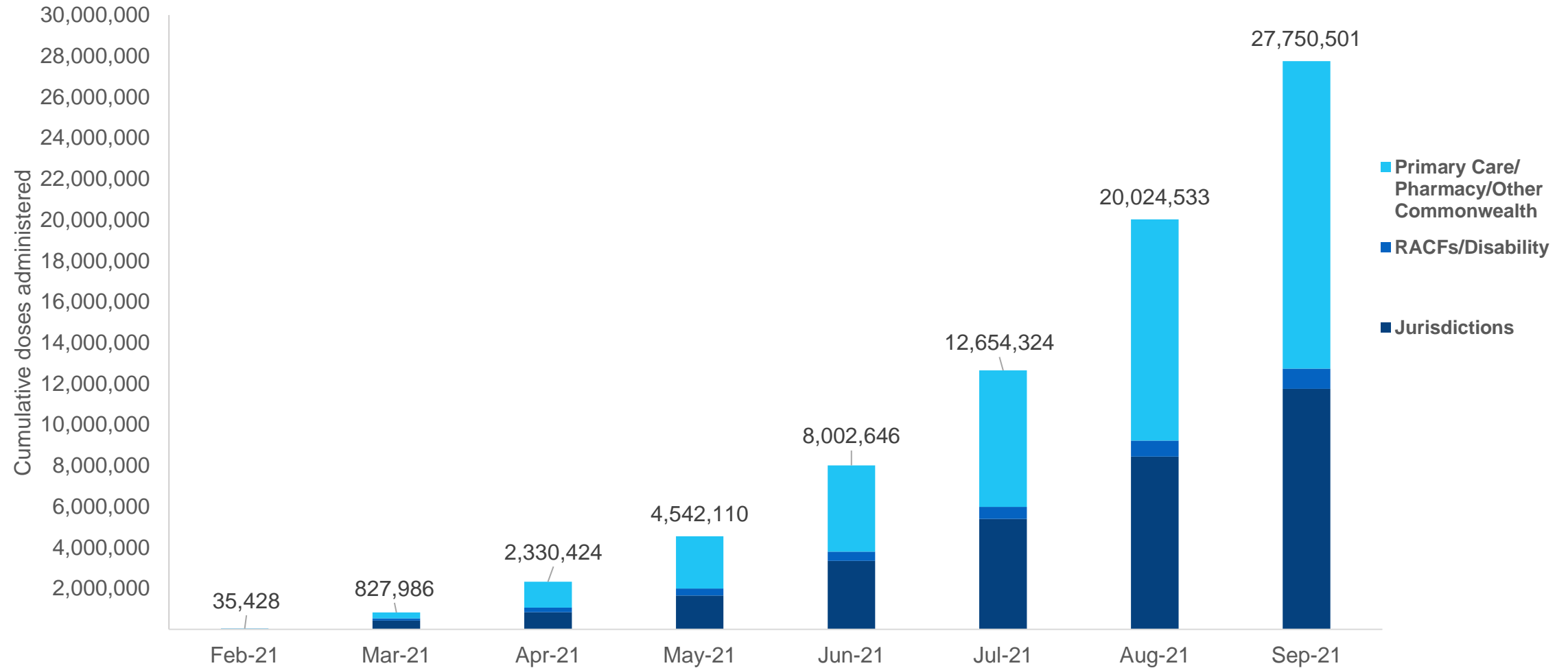
NT
163,358
 (+1,375 daily increase)

*Sourced from the Australian Immunisation Register and self-reported data. Numbers are calculated as difference in daily cumulative reported numbers to allow for historical corrections in all self-reported data sources.

Source: Australian Immunisation Register

Data as at:
29 Sept 2021

Cumulative doses administered by channel



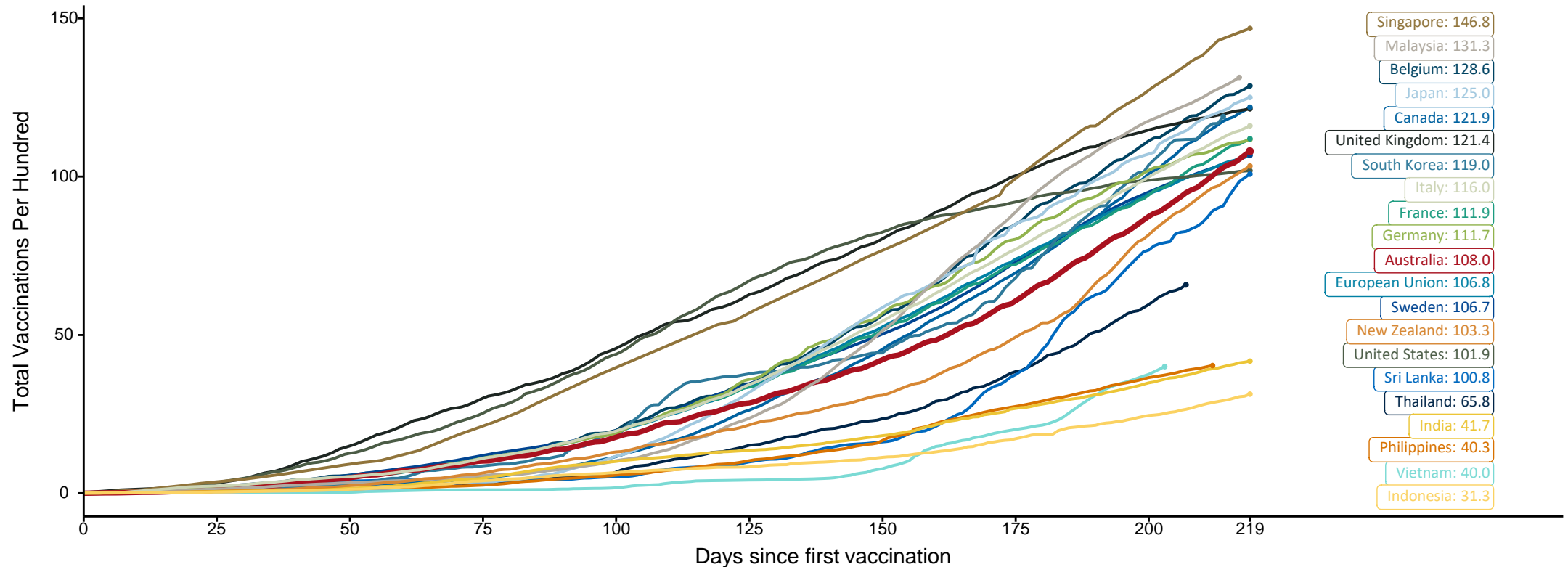
Source: Australian Immunisation Register

Doses at equivalent stages of rollout (Day 219)

Data as at:
29 Sept 2021

The x-axis is truncated at the length of Australia's vaccination program. Countries with intermittent reporting have had their doses per 100 imputed to Australia's current stage of rollout. Israel excluded as it is beyond scale of the graph

Cumulative doses administered (29 Sep): **27,750,501**

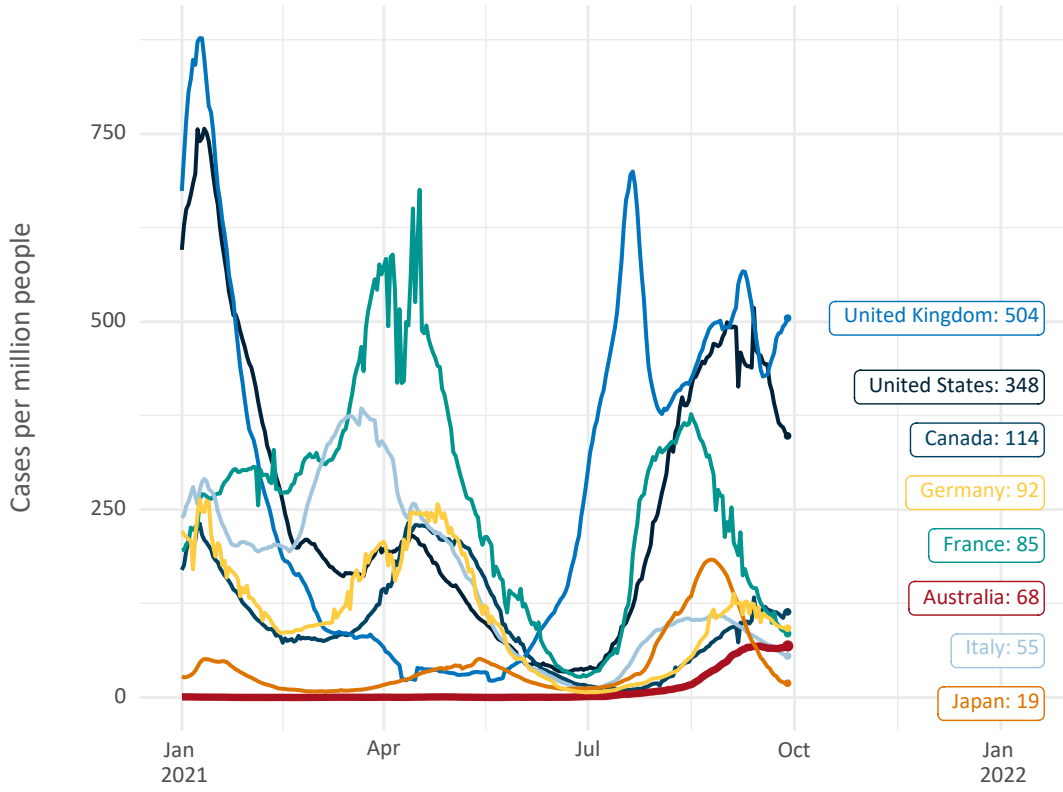


Note: From 15 September 2021, data for Australia includes all doses administered to people 12 and over. Prior to 15 September, data was for 16 and over
 Source: Department of Health (Australia), Our World in Data (international)
 Latest data: 29 September

Data as at: 29 Sept 2021

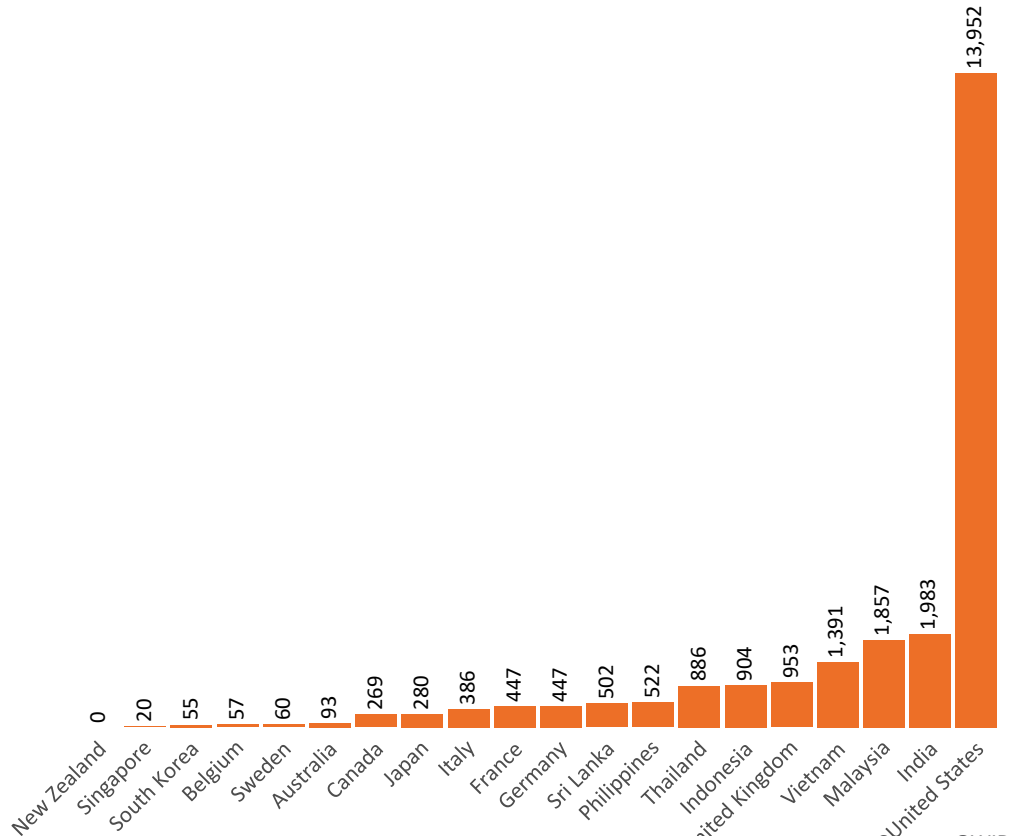
International data – COVID-19

New daily cases per million in 2021, Australia and G7 countries
Smoothed - 7 day average



Source: OWID
Data downloaded: 30 Sep 2021 08:47
Latest data: 28 Sep 2021


COVID-19 deaths in past 7 days - Australia and select countries



Source: OWID
Data downloaded: 30 Sep 2021 08:47
Latest data: 28 Sep 2021

Pandemic Response Payments

Data as at midnight:
29 Sep 2021



2.22 million
People have received at least one COVID Disaster Payment (including ISP200)

\$9.40 billion
Paid Out as at 29 Sep 2021

3.79 million
Claims granted across three different payments




93%
of Claims Received Digitally



COVID Disaster Payment: 3.71 million claims received - 2.05 million individuals paid a total of \$9.11 billion.

\$200 Income Support Payment: 231,000 claims received - 167,000 individuals paid a total of \$187.20 million.

Pandemic Leave Disaster Payment: 75,000 claims received - 65,000 individuals paid a total of \$103.24 million.



THREE PAYMENTS AVAILABLE

COVID Disaster Payment
assisting during a lockdown event in a Commonwealth hotspot.

Income Support Payment \$200
for income support recipients who lost at least 8 hours of work.

Pandemic Leave Disaster Payment
for those who have to self-isolate, quarantine or care.

For more information visit:
servicesaustralia.gov.au

COVID-19 DISASTER PAYMENTS

