



Australian Government
Operation COVID Shield

COVID-19 Vaccine Roll-out

28 September 2021

Data as at:
27 Sept 2021

Total vaccine doses



27,109,766 total vaccine
doses administered nationally as at 27 September
+303,423 recorded in the last 24 hours



15,811,951

people have had at least one
dose

76.7%

of people over the age of 16
have had at least one dose



10,840,368

people are fully vaccinated

52.6%

of people over the age of 16 are
fully vaccinated

NSW
9,833,697
(+127,855 daily
increase)

VIC
7,073,499
(+91,292 daily
increase)

QLD
4,675,079
(+42,708 daily
increase)

WA
2,344,901
(+9,434 daily
increase)

TAS
586,402
(+4,584 daily
increase)

SA
1,669,530
(+17,342 daily
increase)

ACT
660,057
(+8,676 daily
increase)

NT
266,601
(+1,532 daily
increase)

*Administration state breakdown indicates state in which a vaccine was administered

**Overall dose count includes instances of more than two doses per person in a small number of cases.

Source: Australian Immunisation Register

Data as at:
27 Sept 2021

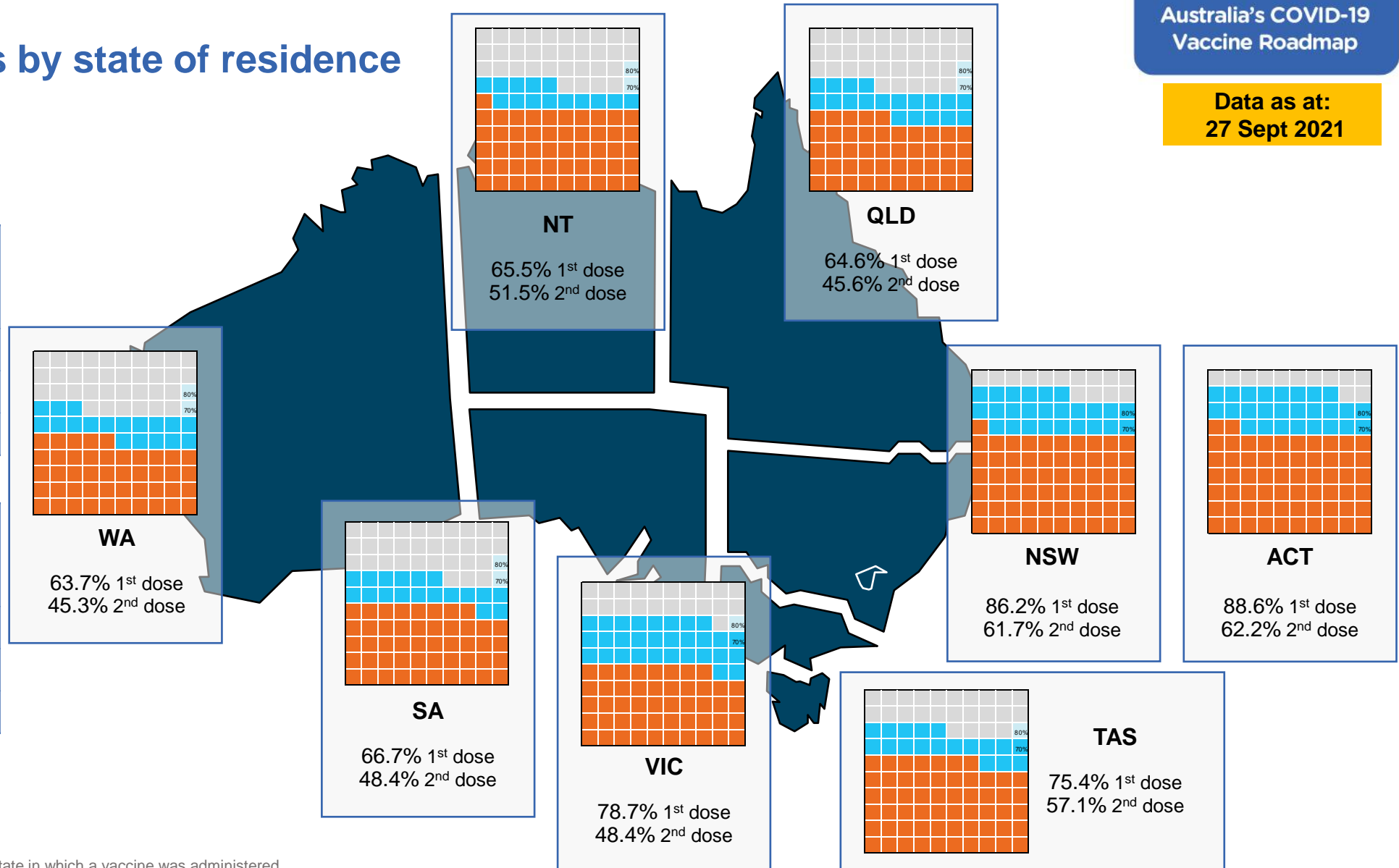
Vaccinations by state of residence

First doses

Age	Today	4 weeks ago	8 weeks ago
16+	76.7%	59.7%	42.2%
50+	88.5%	79.6%	67.3%
70+	94.1%	88.4%	81.1%

Fully vaccinated

Age	Today	4 weeks ago	8 weeks ago
16+	52.6%	35.6%	20.4%
50+	70.0%	52.8%	28.5%
70+	77.5%	64.0%	44.2%



*Residential state may differ from the state in which a vaccine was administered

Commonwealth and Jurisdiction vaccine doses administered

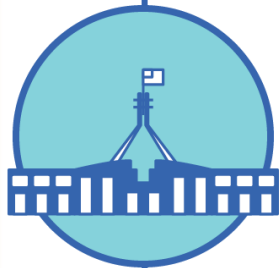
Data as at:
27 Sept 2021



27,109,766 total vaccine
doses administered nationally as at 27 September
+ 303,423 recorded in the last 24 hours



11,521,343
doses administered by state
and territory facilities
+ 100,791
recorded in the last 24 hours



15,588,423
doses administered by
commonwealth facilities
+ 202,632
recorded in the last 24 hours

14,614,827 total vaccine doses
administered in primary care settings
973,596 total vaccine doses
administered in aged care and disability
settings

NSW	Jurisdictions	Commonwealth
Cumulative	3,484,049	6,349,648
Daily increase	29,201	98,654

VIC	Jurisdictions	Commonwealth
Cumulative	3,416,542	3,656,957
Daily increase	35,650	55,642

QLD	Jurisdictions	Commonwealth
Cumulative	1,908,135	2,766,944
Daily increase	12,554	30,154

WA	Jurisdictions	Commonwealth
Cumulative	1,144,287	1,200,614
Daily increase	6,821	2,613

TAS	Jurisdictions	Commonwealth
Cumulative	322,511	263,891
Daily increase	2,083	2,501

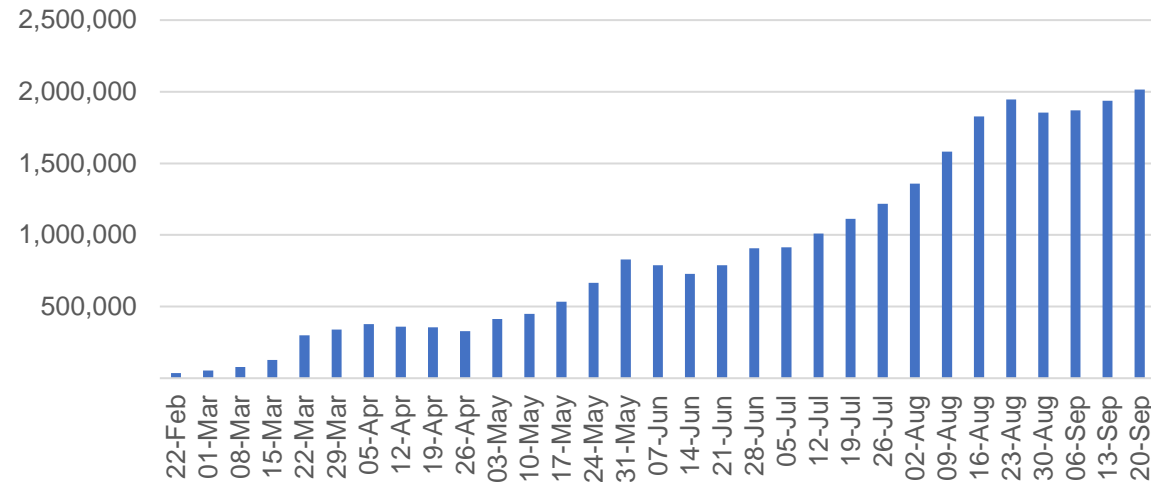
SA	Jurisdictions	Commonwealth
Cumulative	763,440	906,090
Daily increase	9,047	8,295

ACT	Jurisdictions	Commonwealth
Cumulative	321,140	338,917
Daily increase	4,543	4,133

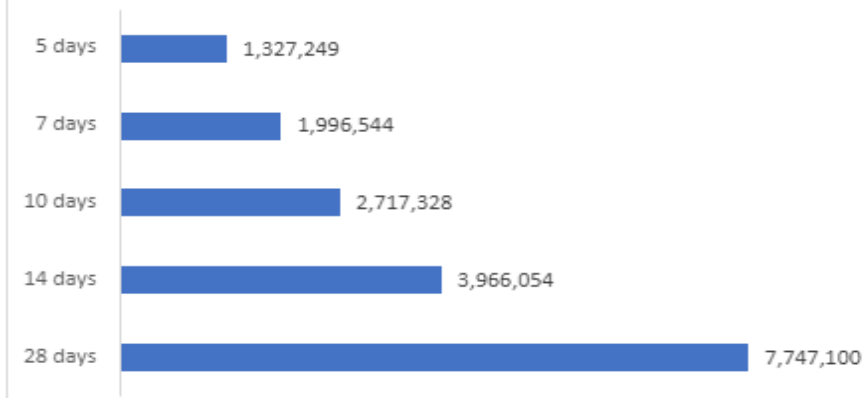
NT	Jurisdictions	Commonwealth
Cumulative	161,239	105,362
Daily increase	892	640

Vaccine milestone charts

Jabs in arms by week



Doses reported

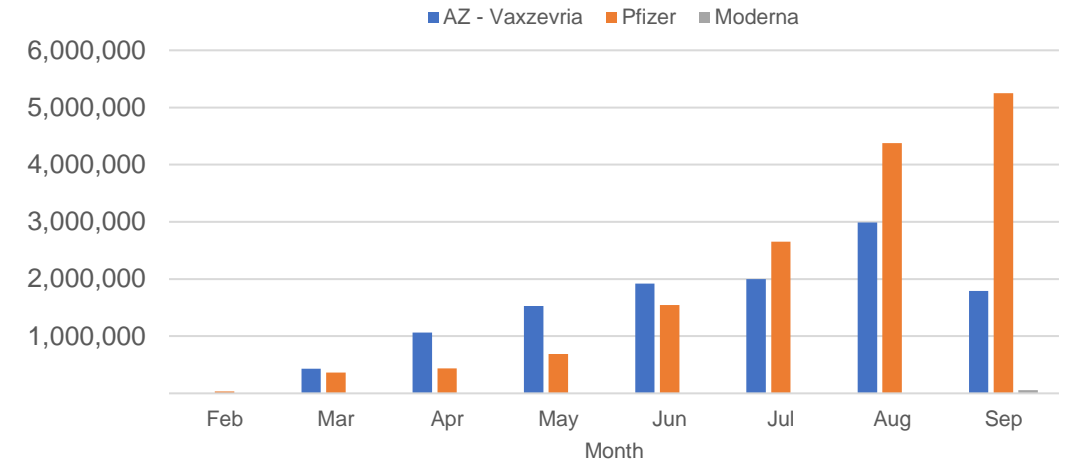


*Sourced from the Australian Immunisation Register.

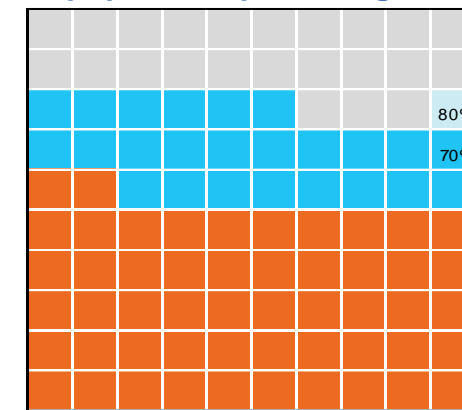
Data as at:
27 Sept 2021

Australia's COVID-19
Vaccine Roadmap

Doses by administration month and vaccine type



Eligible population percentage coverage



1st dose: 76.7% 2nd dose: 52.6%

*Each square represents 1% of the national population. Squares are filled as milestones are achieved.

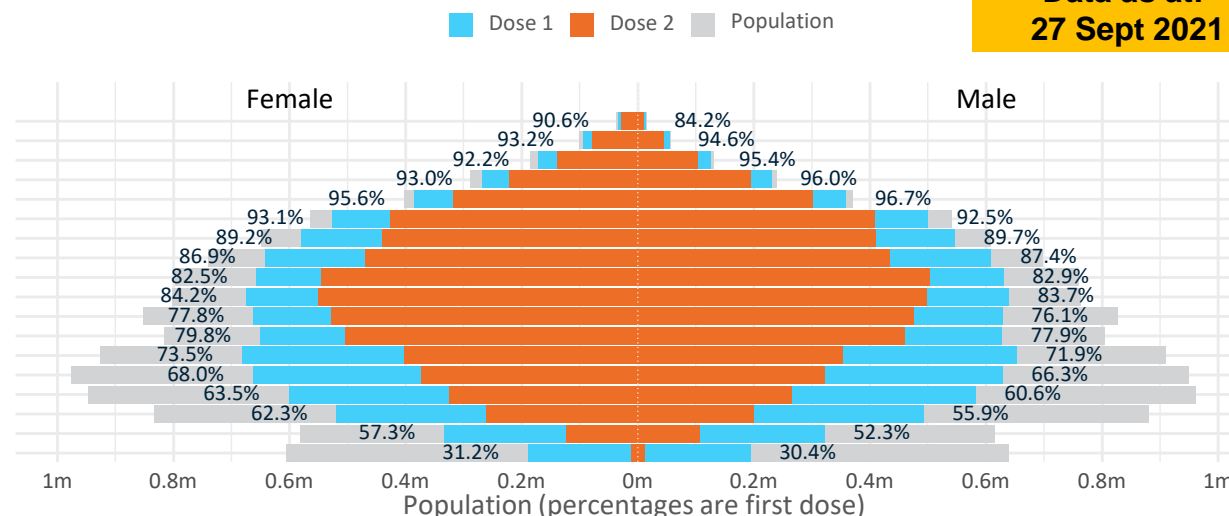
Doses by age and sex

First and second doses by age and sex

Australia's COVID-19
Vaccine Roadmap

Data as at:
27 Sept 2021

Age	Dose 1	Dose 2
95+	47,015 (88.9%)	38,834 (73.4%)
90-94	148,644 (93.8%)	122,678 (77.4%)
85-89	295,985 (93.6%)	243,428 (77.0%)
80-84	499,077 (94.4%)	414,423 (78.4%)
75-79	744,485 (96.2%)	620,228 (80.2%)
70-74	1,026,209 (92.9%)	835,376 (75.6%)
65-69	1,126,632 (89.5%)	850,381 (67.6%)
60-64	1,252,975 (87.2%)	903,822 (62.9%)
55-59	1,287,213 (82.7%)	1,048,320 (67.4%)
50-54	1,314,835 (84.0%)	1,050,217 (67.1%)
45-49	1,291,723 (77.0%)	1,005,149 (59.9%)
40-44	1,279,474 (79.0%)	965,576 (59.6%)
35-39	1,337,932 (72.9%)	756,840 (41.2%)
30-34	1,297,834 (67.5%)	697,595 (36.3%)
25-29	1,191,551 (62.5%)	593,945 (31.2%)
20-24	1,015,501 (59.3%)	463,497 (27.1%)
16-19	654,866 (54.8%)	230,059 (19.2%)
12-15	382,918 (30.8%)	21,631 (1.7%)



	AUS	ACT	NSW	NT	QLD	SA	TAS	VIC	WA
16 and over - dose 1	15,811,951	304,728	5,660,515	124,739	2,656,074	960,638	331,993	4,255,102	1,348,246
16 and over - dose 2	10,840,368	214,112	4,048,903	98,096	1,875,299	696,842	251,321	2,618,140	957,366
16 and over - population	20,619,959*	344,037	6,565,651	190,571	4,112,707	1,440,400	440,172	5,407,574	2,114,978
16 and over % with dose 1	76.68%	88.57%	86.21%	65.46%	64.58%	66.69%	75.42%	78.69%	63.75%
16 and over % with dose 2	52.57%	62.24%	61.67%	51.47%	45.60%	48.38%	57.10%	48.42%	45.27%
50 and over - dose 1	7,743,070	127,655	2,621,323	47,757	1,452,998	560,625	191,953	1,968,903	723,897
50 and over - dose 2	6,127,707	110,115	2,104,884	39,104	1,122,674	429,345	158,136	1,572,157	559,824
50 and over - population	8,749,703	127,802	2,807,793	62,280	1,758,855	674,384	220,036	2,211,211	885,370
50 and over % with dose 1	88.50%	>95%	93.36%	76.68%	82.61%	83.13%	87.24%	89.04%	81.76%
50 and over % with dose 2	70.03%	86.16%	74.97%	62.79%	63.83%	63.66%	71.87%	71.10%	63.23%
70 and over - dose 1	2,761,415	41,850	930,706	10,249	526,227	218,694	72,413	689,974	251,596
70 and over - dose 2	2,274,967	36,556	777,549	8,442	429,904	171,989	61,063	572,852	201,899
70 and over - population	2,934,706	39,946	962,606	12,343	577,767	240,514	77,155	743,519	280,281
70 and over % with dose 1	94.10%	>95%	93.36%	83.03%	91.08%	90.93%	93.85%	92.80%	89.77%
70 and over % with dose 2	77.52%	91.51%	80.78%	68.40%	74.41%	71.51%	79.14%	77.05%	72.03%
12 to 15 - dose 1	382,918	8,224	173,549	3,783	52,540	10,681	3,156	114,443	14,291
12 to 15 - dose 2	21,631	526	11,709	1,120	3,783	383	397	2,927	626
12 to 15 - population	1,243,990	19,693	390,330	13,060	270,146	82,747	26,308	308,611	132,869
12 to 15 % with dose 1	30.78%	41.76%	44.46%	28.97%	19.45%	12.91%	12.00%	37.08%	10.76%
12 to 15 % with dose 2	1.74%	2.67%	3.00%	8.58%	1.40%	0.46%	1.51%	0.95%	0.47%

*National population will not equal sum of listed jurisdictions due to a small number of people counted in national population residing in some 'other' territories. Sum of state doses will not add to national total as some records are unable to be geocoded to a State or Territory.

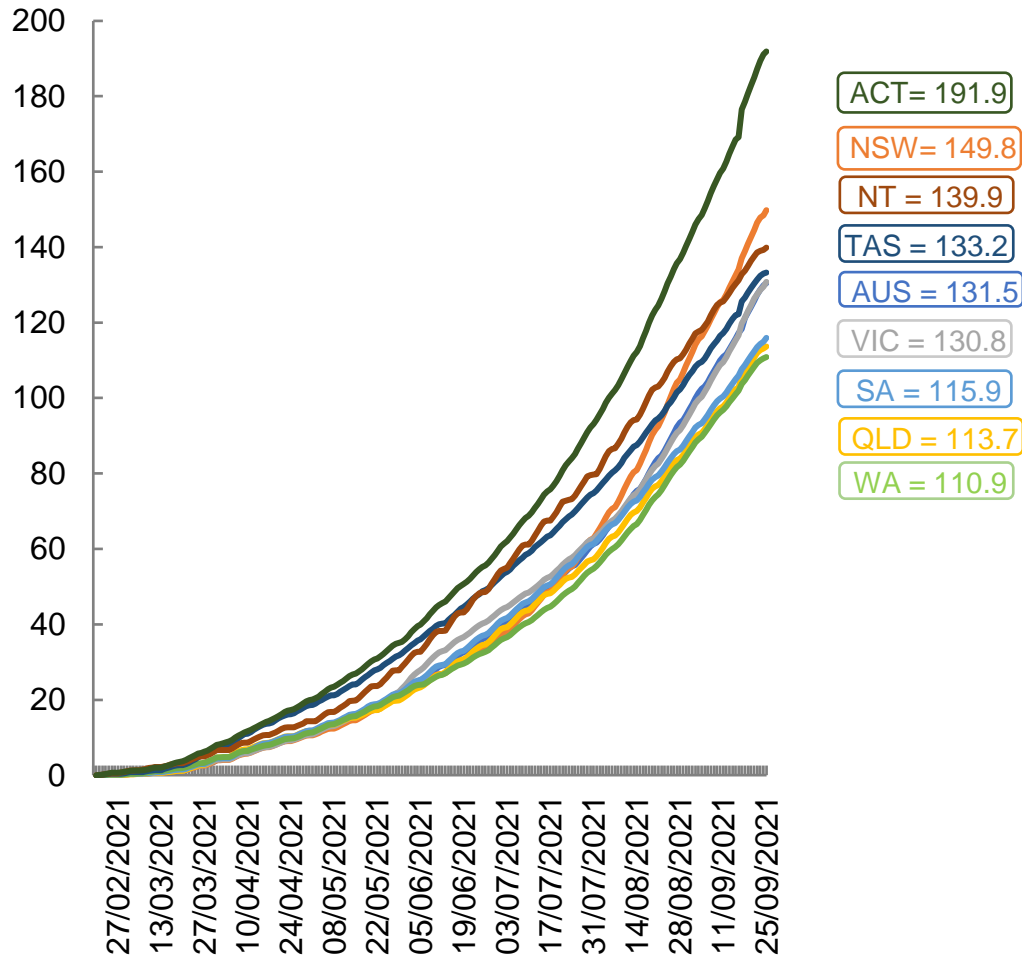
Doses sourced from Australian Immunisation Register, population from ABS ERP June 2020

Vaccinations by location

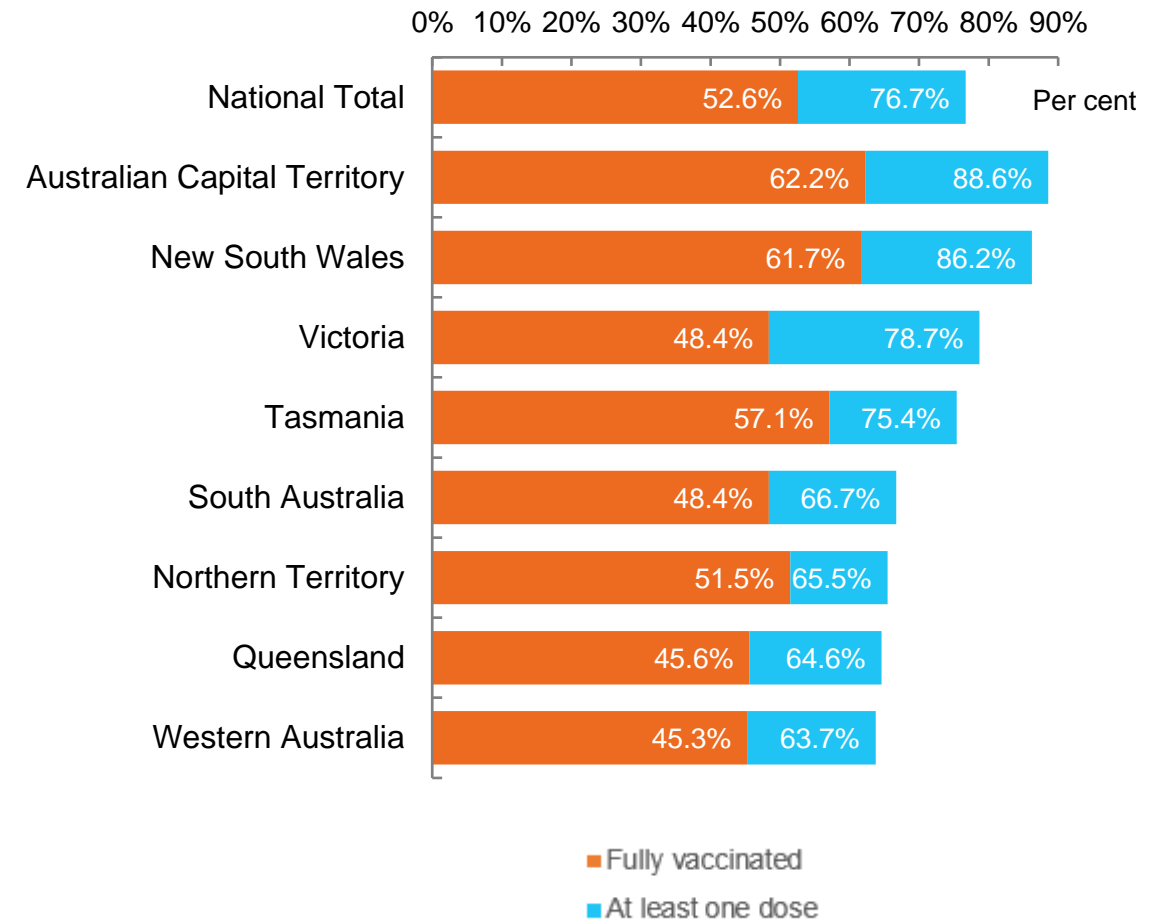
Data as at:
27 Sept 2021

Australia's COVID-19
Vaccine Roadmap

Cumulative total doses administered vs state populations*



First and Second Doses by state of residence



*Not an indication of percentage vaccinated, numbers will exceed 100 due to multiple doses required per person of the population

Aboriginal and Torres Strait Islander peoples

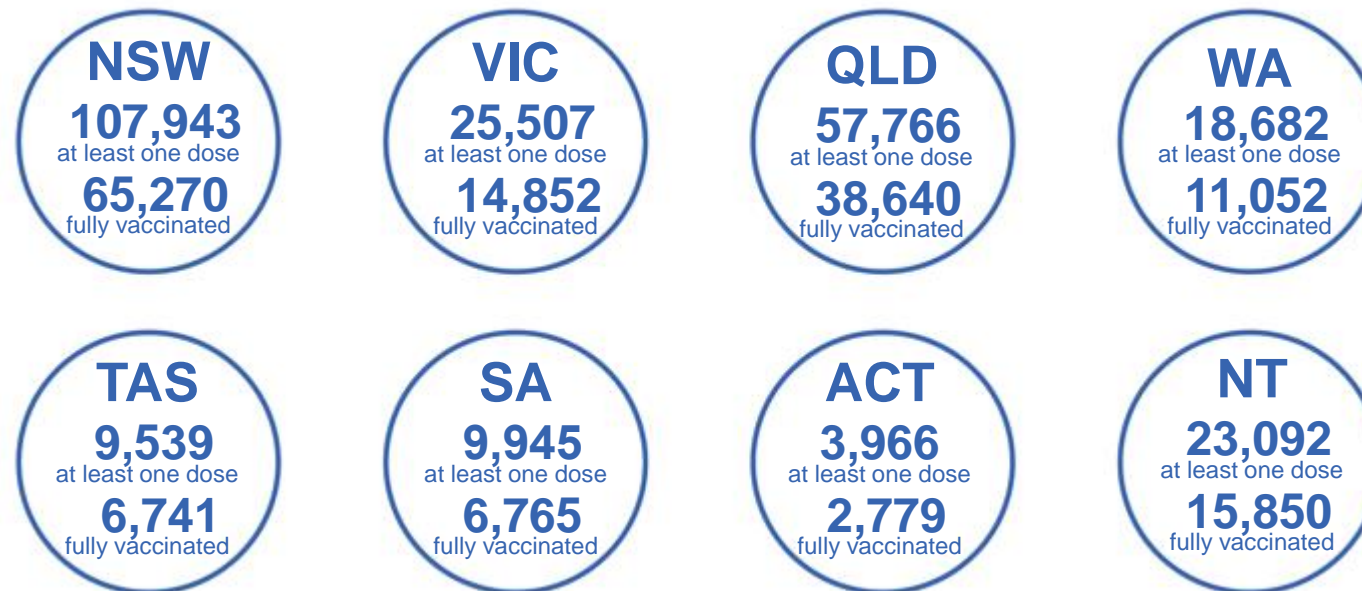
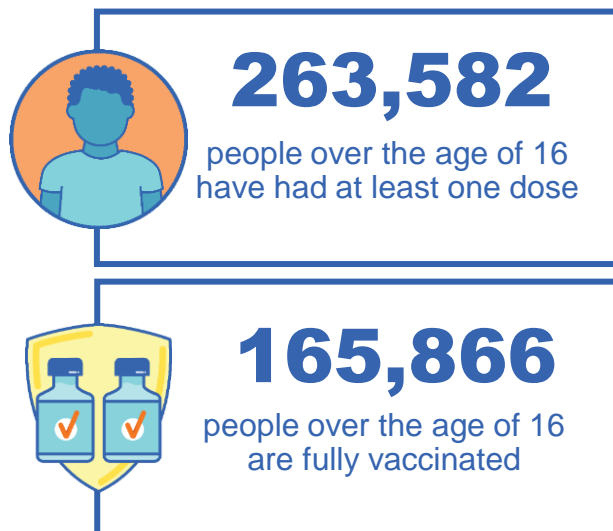
Number of people vaccinated

Data as at:
26 Sept 2021
Updated weekly

Australia's COVID-19
Vaccine Roadmap

167 Aboriginal community controlled health services (ACCHS)

0#	48	26	39	12	3	21	18
ACT	NSW	NT	QLD	SA	TAS	VIC	WA



7,142 people with at least one dose
3,917 people fully vaccinated

residing in other territories or with missing residential information

Source: Australian Immunisation Register

*Identifying as Aboriginal and Torres Strait Islander is optional and the estimated population may be under reported.

**Includes all Aboriginal and Torres Strait Islander peoples who have received a vaccination, not limited to those administered in an ACCHS setting

***Updated weekly.

#ACCHS in the ACT are currently operating as a Commonwealth Vaccine Clinics so not included to avoid double counting

Data as at:
27 Sept 2021

Commonwealth primary care



Primary care vaccine administration sites

5,506	137	167	3,683
GPs	CVCs	ACCHS	Pharmacies



14,614,827 total vaccine doses administered primary care settings as at 27 September
+ 197,841 recorded in the last 24 hours

Primary care vaccinations by provider type

	Doses administered	Daily increase	7 day increase
General Practice* includes other Commonwealth	13,892,808	167,117	997,468
Pharmacy	722,019	30,724	128,992

NSW
5,915,950
(+95,728 daily increase)

VIC
3,469,394
(+54,521 daily increase)

QLD
2,567,949
(+28,419 daily increase)

WA
1,139,377
(+2,822 daily increase)

TAS
252,636
(+2,567 daily increase)

SA
853,037
(+8,277 daily increase)

ACT
247,395
(+3,642 daily increase)

NT
89,862
(+691 daily increase)

79,227 doses administered to persons residing in other territories or with missing residential information

*General practice includes Commonwealth Vaccination Clinics, Aboriginal Community Health Centres, Royal Flying Doctor Service and other Commonwealth vaccination facilities

Source: Australian Immunisation Register

Data as at:
27 Sept 2021

Commonwealth aged care and disability doses administered



973,596

(+ 4,791 last 24 hours)

Total vaccine doses administered in aged care and disability facilities as at 27 September

Number of doses administered as part of the Commonwealth aged and disability care rollout

NSW
455,105
(+2,605 daily increase)

VIC
179,163
(+455 daily increase)

QLD
162,882
(+1,552 daily increase)

WA
62,966
(+74 daily increase)

TAS
16,616
(+5 daily increase)

SA
56,375
(+28 daily increase)

ACT
11,501
(+5 daily increase)

NT
5,616
(+7 daily increase)

*Sourced from the Australian Immunisation Register. Includes all persons vaccinated at participating residential aged care, disability and related industry settings.

**State level breakdown indicates the residential location and may not align to the state in which the vaccination occurred.

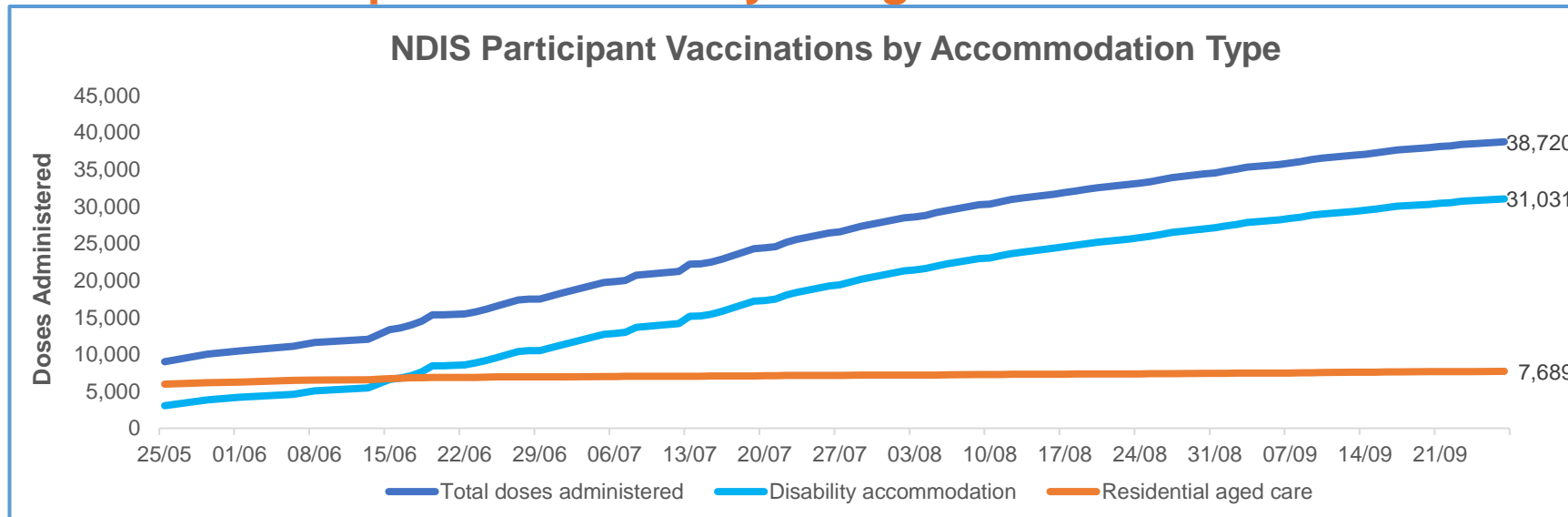
23,372

doses administered to persons residing in other territories or with missing residential information

Data as at:
27 Sept 2021*

Vaccination rate of people with disability and the disability workforce

Phase 1a – People with disability living in shared accommodation



	Total people with at least one dose	People fully vaccinated	Total number of individuals in cohort	Total doses administered	% People with at least one dose	% People fully vaccinated
NDIS participants living in shared accommodation **	20,528	18,192	27,293	38,720	75.2%	66.7%
NDIS screened workers ***	148,168	118,849	200,500	267,017	73.9%	59.3%

* Updates are available Monday to Friday on participants, and bi-weekly for workers, numbers may be up to four days old.

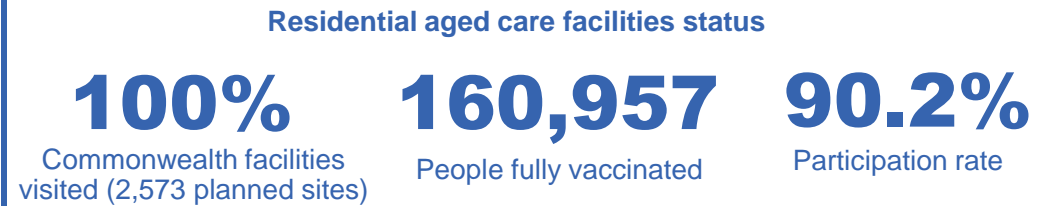
** Shared accommodation means two or more people with disability living in shared residential accommodation and NDIS participants living in Residential Aged Care accommodation as per the eligibility criteria of Phase 1a.

*** Total number of workers within the NDIS Commission Worker Screening database who have ever been successfully screened and linked to an NDIS registered provider or participant.

Source: Linkage between National Disability Insurance Agency data, NDIS Quality and Safeguards Commission data and the Australian Immunisation Register.



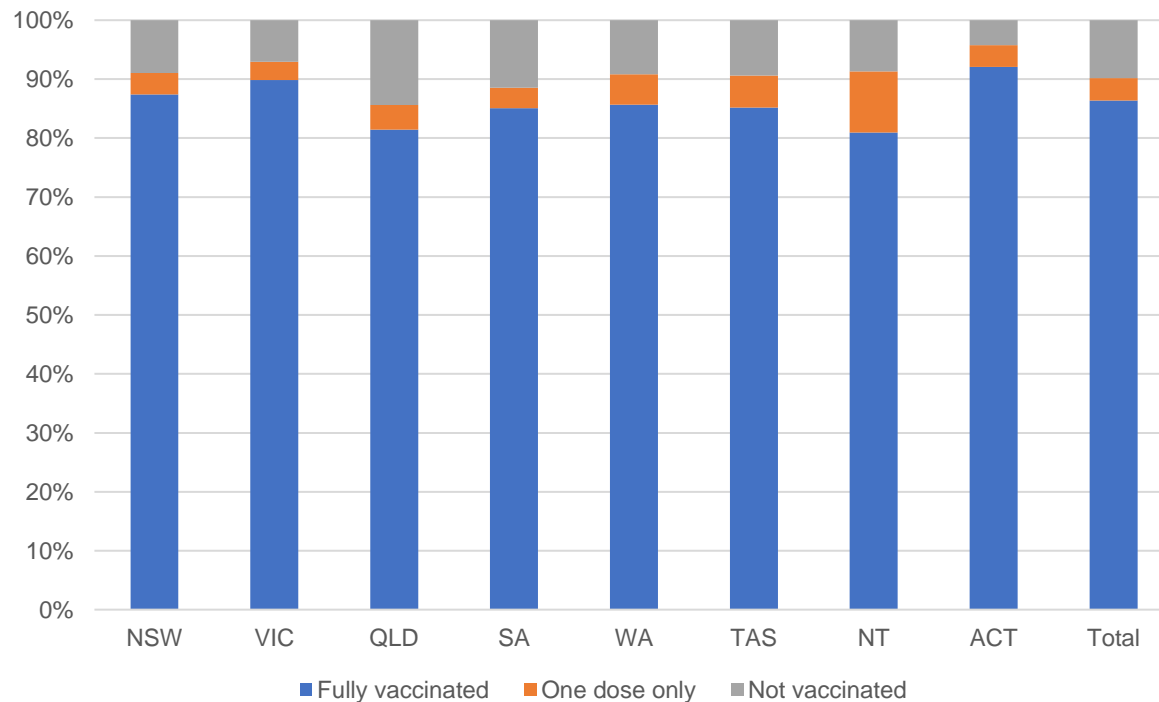
Residential aged care vaccination rollout



Australia's COVID-19 Vaccine Roadmap

Data as at:
27 Sept 2021

Aged care resident vaccinations



Aged care worker vaccinations

Jurisdictions	Total workers with at least one dose	Workers fully vaccinated	% Workers with at least one dose	% Workers fully vaccinated
NSW	78,909	67,196	99.2%	84.4%
VIC	70,758	59,802	98.8%	83.5%
QLD	47,539	37,669	99.2%	78.6%
SA	26,542	22,171	99.0%	82.7%
WA	23,196	17,243	99.3%	73.8%
TAS	7,457	6,260	99.5%	83.5%
NT	797	762	99.3%	94.9%
ACT	2,940	2,576	99.8%	87.4%
Total	258,138	213,679	99.1%	82.0%

Source: My Aged Care Portal staff vaccination progress

**Resident vaccination information is reported manually by service providers

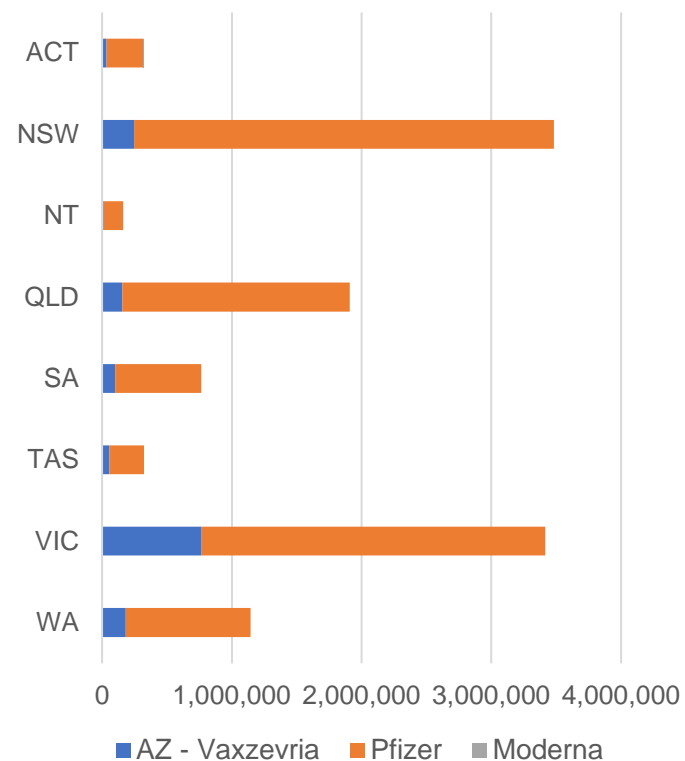
*Status updates are provided by facilities at least once per week. Reporting is updated Monday to Friday to encompass different facility updates being made on different days.

Data is sourced directly from Aged Care Service Providers and is not drawn or closely aligned with data from AIR due to inconsistencies and potential lags in uploading of records.

Data as at:
27 Sept 2021

Jurisdiction administered

Total vaccine doses administered in State and Territory clinics as at 27 September



11,521,343 total vaccine doses administered
in State and Territory clinics as at 27 September
+ 100,791 recorded in the last 24 hours
+ 820,932 recorded in the last 7 days

NSW
3,484,049
(+29,201 daily increase)

VIC
3,416,542
(+35,650 daily increase)

QLD
1,908,135
(+12,554 daily increase)

WA
1,144,287
(+6,821 daily increase)

TAS
322,511
(+2,083 daily increase)

SA
763,440
(+9,047 daily increase)

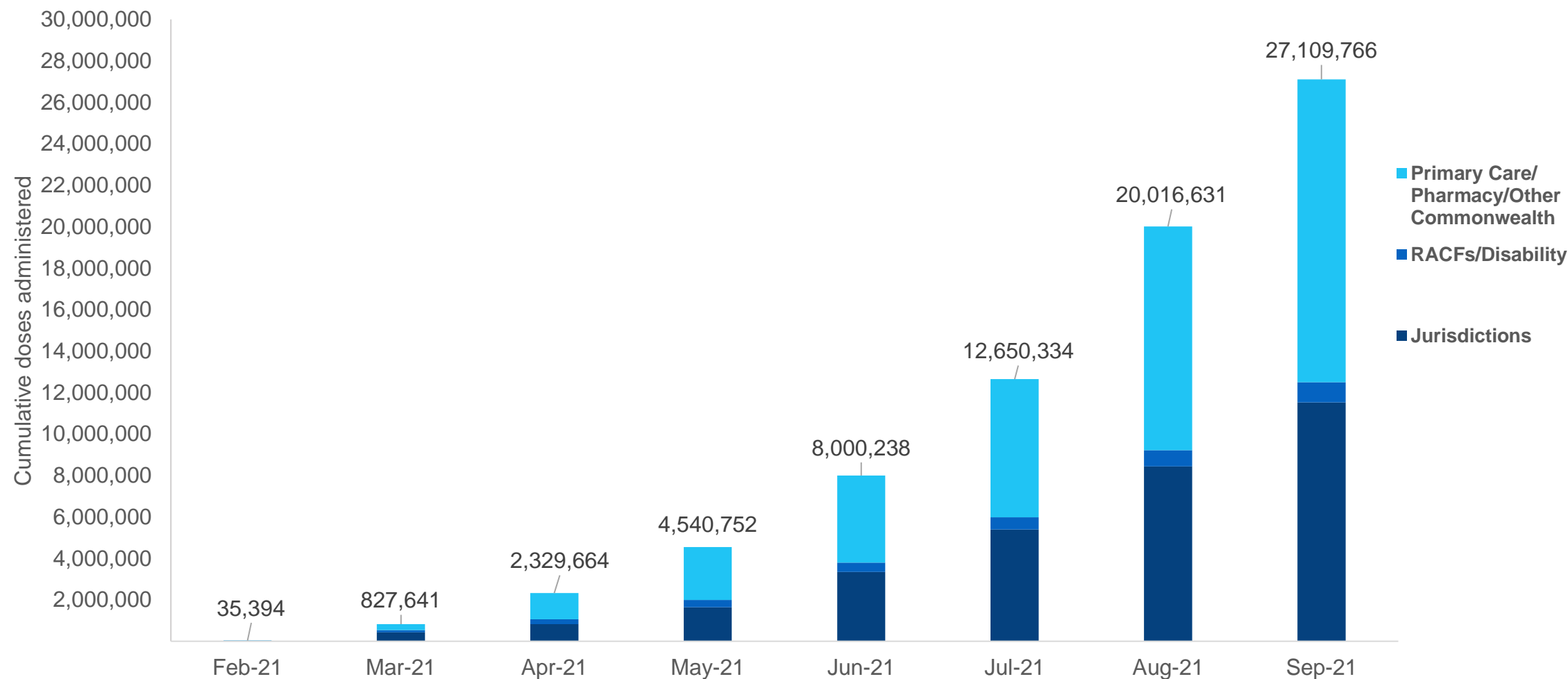
ACT
321,140
(+4,543 daily increase)

NT
161,239
(+892 daily increase)

*Sourced from the Australian Immunisation Register and self-reported data. Numbers are calculated as difference in daily cumulative reported numbers to allow for historical corrections in all self-reported data sources.

Cumulative doses administered by channel

Data as at:
27 Sept 2021



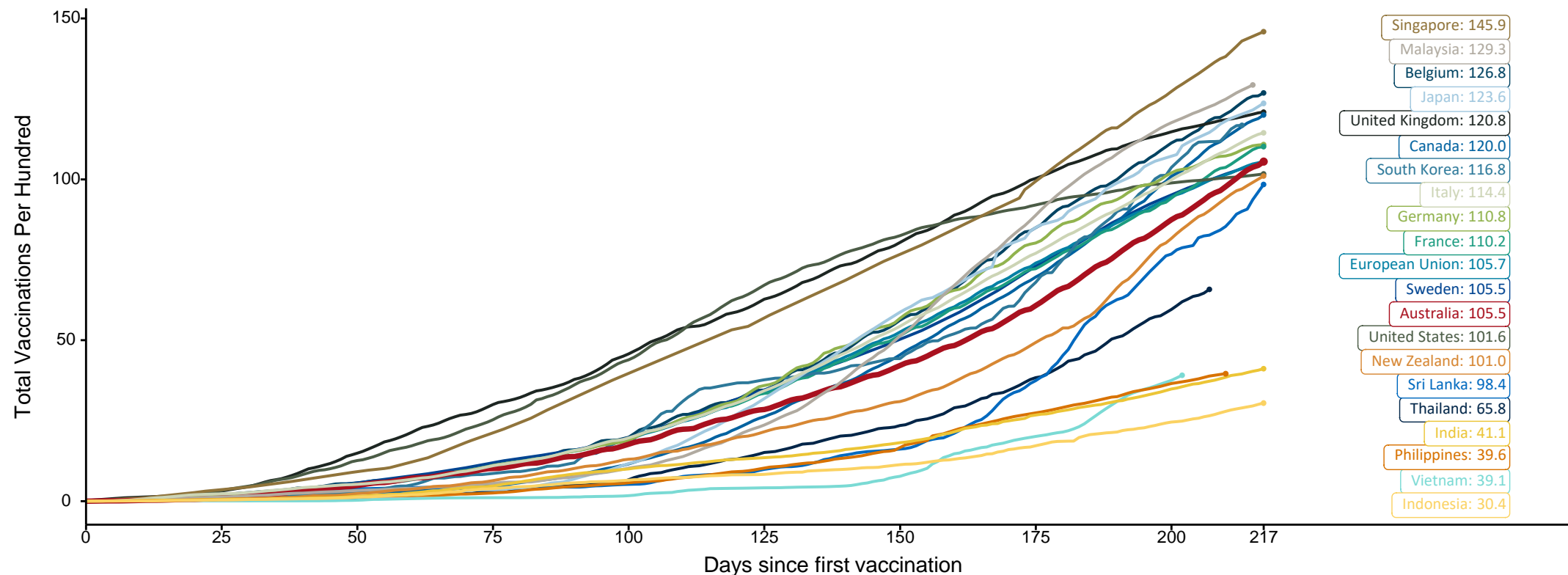
Source: Australian Immunisation Register

Doses at equivalent stages of rollout (Day 217)

Data as at:
27 Sept 2021

The x-axis is truncated at the length of Australia's vaccination program. Countries with intermittent reporting have had their doses per 100 imputed to Australia's current stage of rollout. Israel excluded as it is beyond scale of the graph

Cumulative doses administered (27 Sep): **27,109,766**

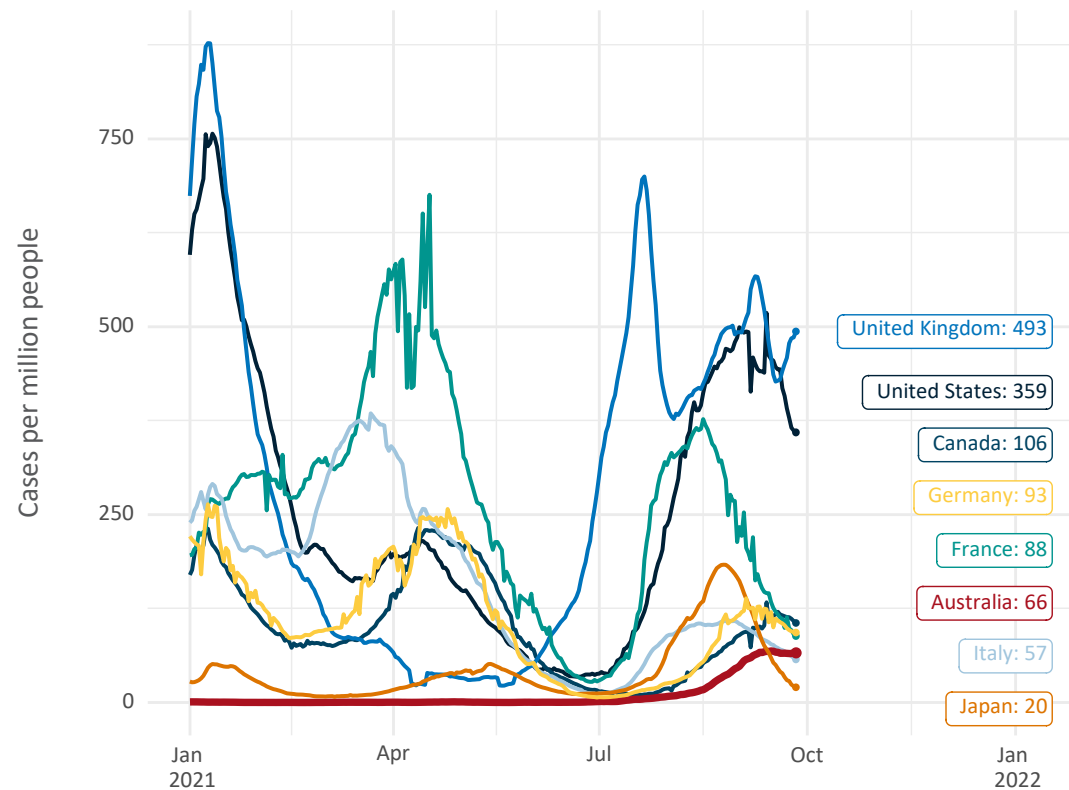


Note: From 15 September 2021, data for Australia includes all doses administered to people 12 and over. Prior to 15 September, data was for 16 and over
Source: Department of Health (Australia), Our World in Data (international)
Latest data: 27 September

International data – COVID-19

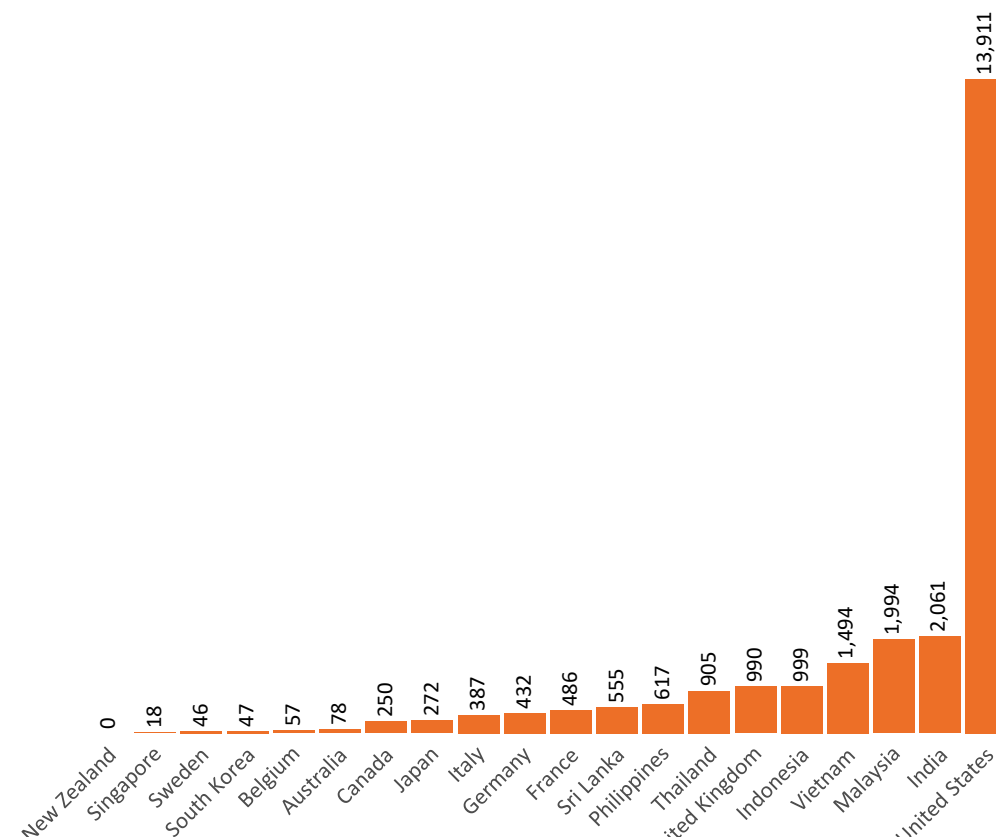
Data as at:
27 Sept 2021

New daily cases per million in 2021, Australia and G7 countries
Smoothed - 7 day average



Source: OWID
Data downloaded: 28 Sep 2021 08:39
Latest data: 26 Sep 2021

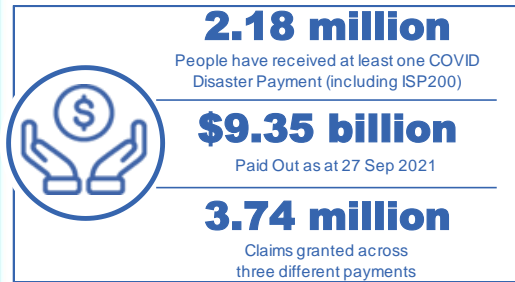
COVID-19 deaths in past 7 days - Australia and select countries



Source: OWID
Data downloaded: 28 Sep 2021 08:39
Latest data: 26 Sep 2021

Data as at midnight:
27 Sep 2021

Pandemic Response Payments



COVID Disaster Payment:	3.66 million claims received - 2.02 million individuals paid a total of \$9.06 billion.
\$200 Income Support Payment:	228,000 claims received - 165,000 individuals paid a total of \$185.88 million.
Pandemic Leave Disaster Payment:	73,000 claims received - 63,000 individuals paid a total of \$99.77 million.



COVID Disaster Payment
assisting during a lockdown event in a Commonwealth hotspot.

Income Support Payment \$200
for income support recipients who lost at least 8 hours of work.

Pandemic Leave Disaster Payment
for those who have to self-isolate, quarantine or care.

For more information visit:
servicesaustralia.gov.au

COVID-19 DISASTER PAYMENTS

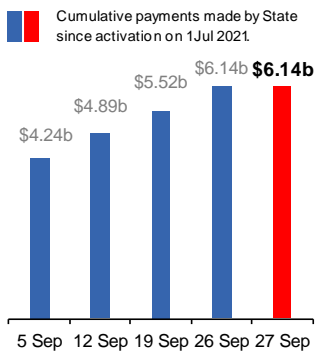
New South Wales

Active lockdown since 24 Jun

1.05m people have received at least one COVID Disaster Payment.

\$6.14b paid out as at 27 Sep 2021.

\$613m paid in initial and reoccurring payments in the week ending 26 Sep 2021.



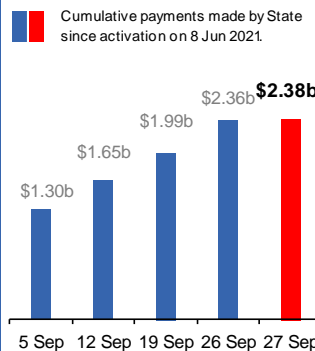
Victoria

Active lockdown (#6) since 6 Aug

614,000 people have received at least one COVID Disaster Payment.

\$2.38b paid out as at 27 Sep 2021.

\$378m paid in initial and reoccurring payments in the week ending 26 Sep 2021.



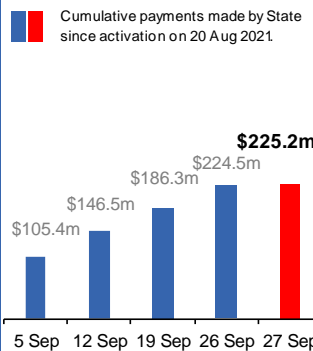
Australian Capital Territory

Active lockdown since 12 Aug

63,000 people have received at least one COVID Disaster Payment.

\$225.2m paid out as at 27 Sep 2021.

\$38m paid in initial and reoccurring payments in the week ending 26 Sep 2021.



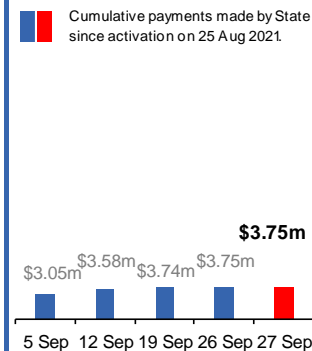
Northern Territory

Lockdown from 18 – 20 Jul
Claiming period ended 13 Sep

5,782 people have received at least one COVID Disaster Payment.

\$3.75m paid out as at 27 Sep 2021.

\$7,000 paid in initial payments in the week ending 26 Sep 2021.



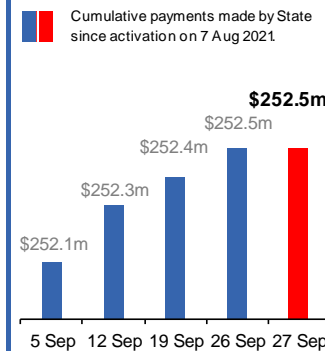
Queensland

Lockdown from 31 Jul – 11 Aug
Claiming period ended 28 Aug

196,000 people have received at least one COVID Disaster Payment.

\$252.5m paid out as at 27 Sep 2021.

\$40,000 paid in initial and reoccurring payments in the week ending 26 Sep 2021.



South Australia

Lockdown from 21 – 27 Jul
Claiming period ended 17 Aug

86,000 people have received at least one COVID Disaster Payment.

\$48.2m paid out as at 27 Sep 2021.

\$2,000 paid in initial payments in the week ending 26 Sep 2021.

