



Australian Government
Operation COVID Shield

COVID-19 Vaccine Roll-out

27 September 2021

Data as at:
26 Sept 2021

Total vaccine doses



26,806,343 total vaccine
doses administered nationally as at 26 September
+145,382 recorded in the last 24 hours



15,695,827

people have had at least one
dose

76.1%

of people over the age of 16
have had at least one dose



10,684,489

people are fully vaccinated

51.8%

of people over the age of 16 are
fully vaccinated

NSW
9,705,842
(+40,539 daily
increase)

VIC
6,982,207
(+49,514 daily
increase)

QLD
4,632,371
(+26,749 daily
increase)

WA
2,335,467
(+10,948 daily
increase)

TAS
581,818
(+2,463 daily
increase)

SA
1,652,188
(+8,280 daily
increase)

ACT
651,381
(+6,154 daily
increase)

NT
265,069
(+735 daily
increase)

*Administration state breakdown indicates state in which a vaccine was administered

**Overall dose count includes instances of more than two doses per person in a small number of cases.

Data as at:
26 Sept 2021

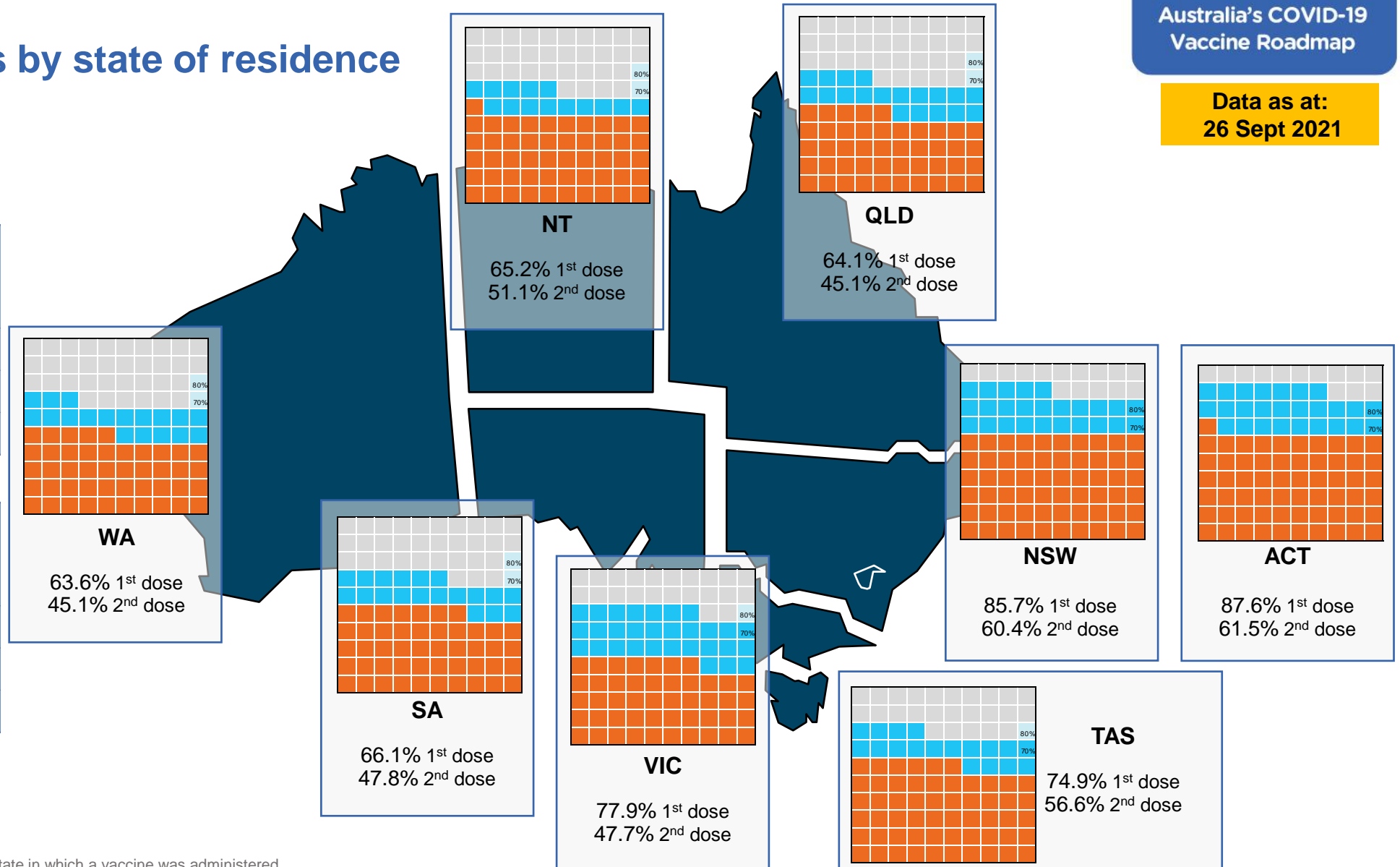
Vaccinations by state of residence

First doses

Age	Today	4 weeks ago	8 weeks ago
16+	76.1%	58.9%	41.7%
50+	88.2%	79.1%	66.9%
70+	93.9%	88.1%	80.8%

Fully vaccinated

Age	Today	4 weeks ago	8 weeks ago
16+	51.8%	35.1%	19.9%
50+	69.5%	51.8%	27.8%
70+	77.1%	63.3%	43.4%



*Residential state may differ from the state in which a vaccine was administered

Commonwealth and Jurisdiction vaccine doses administered

Data as at:
26 Sept 2021



26,806,343 total vaccine
doses administered nationally as at 26 September
+ 145,382 recorded in the last 24 hours



11,420,552
doses administered by state
and territory facilities
+ 86,233
recorded in the last 24 hours



15,385,791
doses administered by
commonwealth facilities
+ 59,149
recorded in the last 24 hours
14,416,986 total vaccine doses
administered in primary care settings
968,805 total vaccine doses
administered in aged care and disability
settings

NSW	Jurisdictions	Commonwealth
Cumulative	3,454,848	6,250,994
Daily increase	17,651	22,888

VIC	Jurisdictions	Commonwealth
Cumulative	3,380,892	3,601,315
Daily increase	30,539	18,975

QLD	Jurisdictions	Commonwealth
Cumulative	1,895,581	2,736,790
Daily increase	17,093	9,656

WA	Jurisdictions	Commonwealth
Cumulative	1,137,466	1,198,001
Daily increase	7,578	3,370

TAS	Jurisdictions	Commonwealth
Cumulative	320,428	261,390
Daily increase	2,092	371

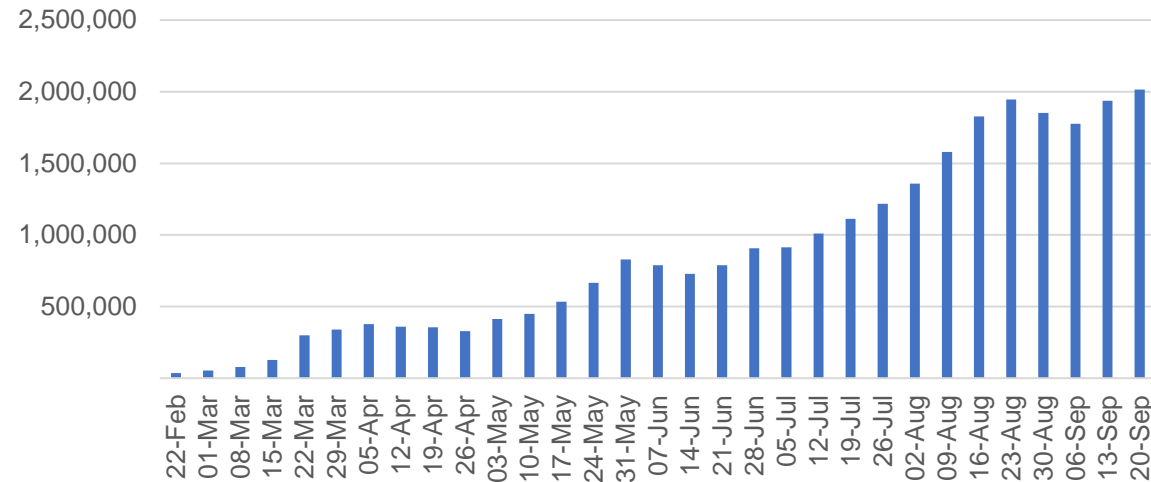
SA	Jurisdictions	Commonwealth
Cumulative	754,393	897,795
Daily increase	6,213	2,067

ACT	Jurisdictions	Commonwealth
Cumulative	316,597	334,784
Daily increase	4,348	1,806

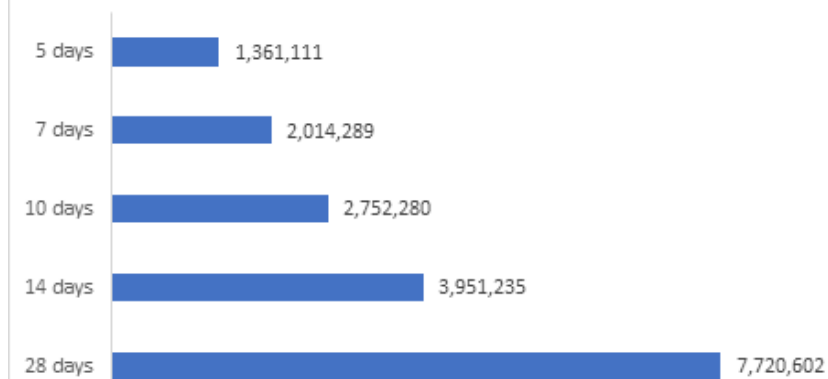
NT	Jurisdictions	Commonwealth
Cumulative	160,347	104,722
Daily increase	719	16

Vaccine milestone charts

Jabs in arms by week



Doses reported

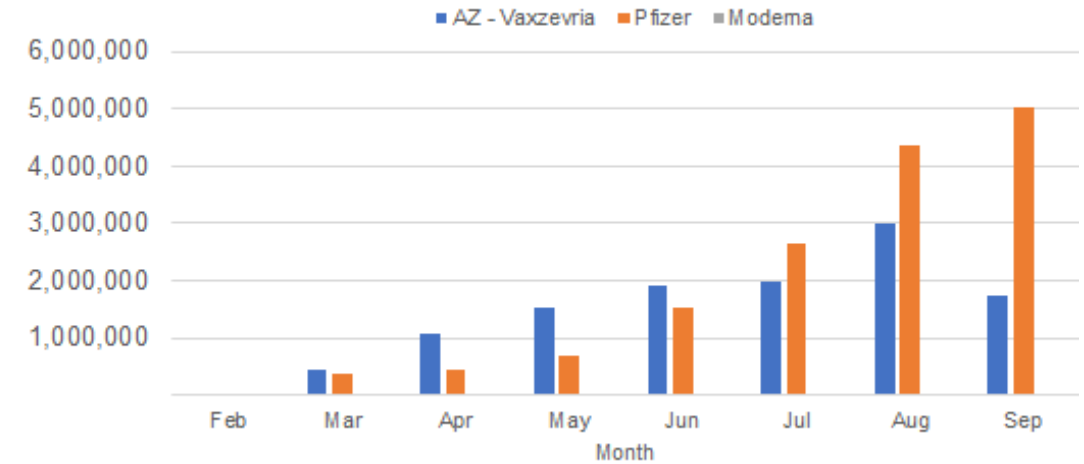


*Sourced from the Australian Immunisation Register.

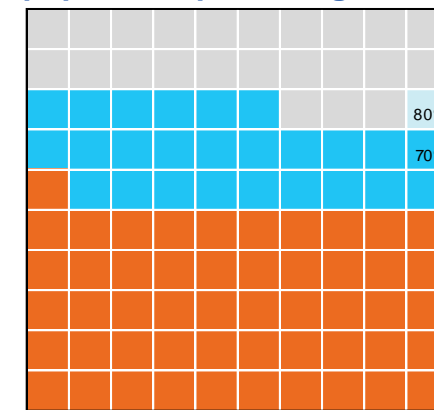
Data as at:
26 Sept 2021

Australia's COVID-19
Vaccine Roadmap

Doses by administration month and vaccine type



Eligible population percentage coverage



1st dose: 76.1% 2nd dose: 51.8%

*Each square represents 1% of the national population.
Squares are filled as milestones are achieved.

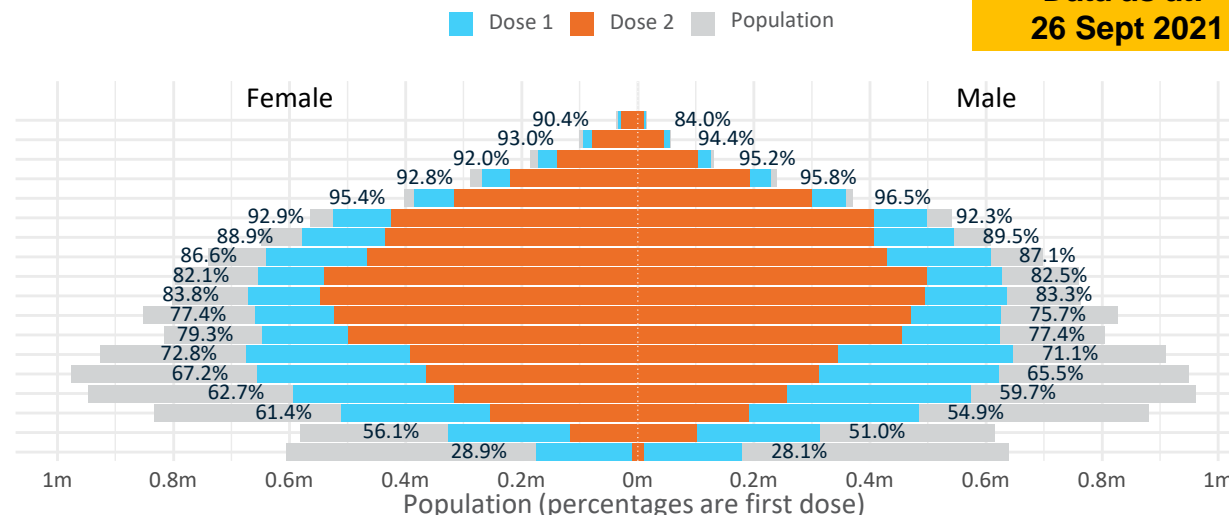
Data as at:
26 Sept 2021

Doses by age and sex

First and second doses by age and sex

	16+	50+	70+	12-15
Dose 1	76.12% (15,695,827 doses / 20,619,959 people)	88.20% (7,717,357 doses / 8,749,703 people)	93.89% (2,755,405 doses / 2,934,706 people)	28.49% (354,367 doses / 1,243,990 people)
Dose 2	51.82% (10,684,489 doses / 20,619,959 people)	69.48% (6,079,138 doses / 8,749,703 people)	77.08% (2,262,007 doses / 2,934,706 people)	1.56% (19,453 doses / 1,243,990 people)

Age	Dose 1	Dose 2
95+	46,909 (88.7%)	38,669 (73.1%)
90-94	148,325 (93.6%)	122,038 (77.0%)
85-89	295,368 (93.4%)	242,108 (76.6%)
80-84	497,972 (94.2%)	412,203 (78.0%)
75-79	742,813 (96.0%)	616,693 (79.7%)
70-74	1,024,018 (92.7%)	830,296 (75.1%)
65-69	1,123,394 (89.3%)	842,854 (67.0%)
60-64	1,248,661 (86.9%)	894,078 (62.2%)
55-59	1,281,782 (82.4%)	1,039,612 (66.8%)
50-54	1,308,115 (83.6%)	1,040,587 (66.5%)
45-49	1,284,446 (76.6%)	994,564 (59.3%)
40-44	1,271,380 (78.5%)	954,091 (58.9%)
35-39	1,324,491 (72.2%)	737,338 (40.2%)
30-34	1,282,822 (66.7%)	678,291 (35.3%)
25-29	1,175,240 (61.6%)	575,812 (30.2%)
20-24	999,869 (58.4%)	447,155 (26.1%)
16-19	640,222 (53.5%)	218,100 (18.2%)
12-15	354,367 (28.5%)	19,453 (1.6%)



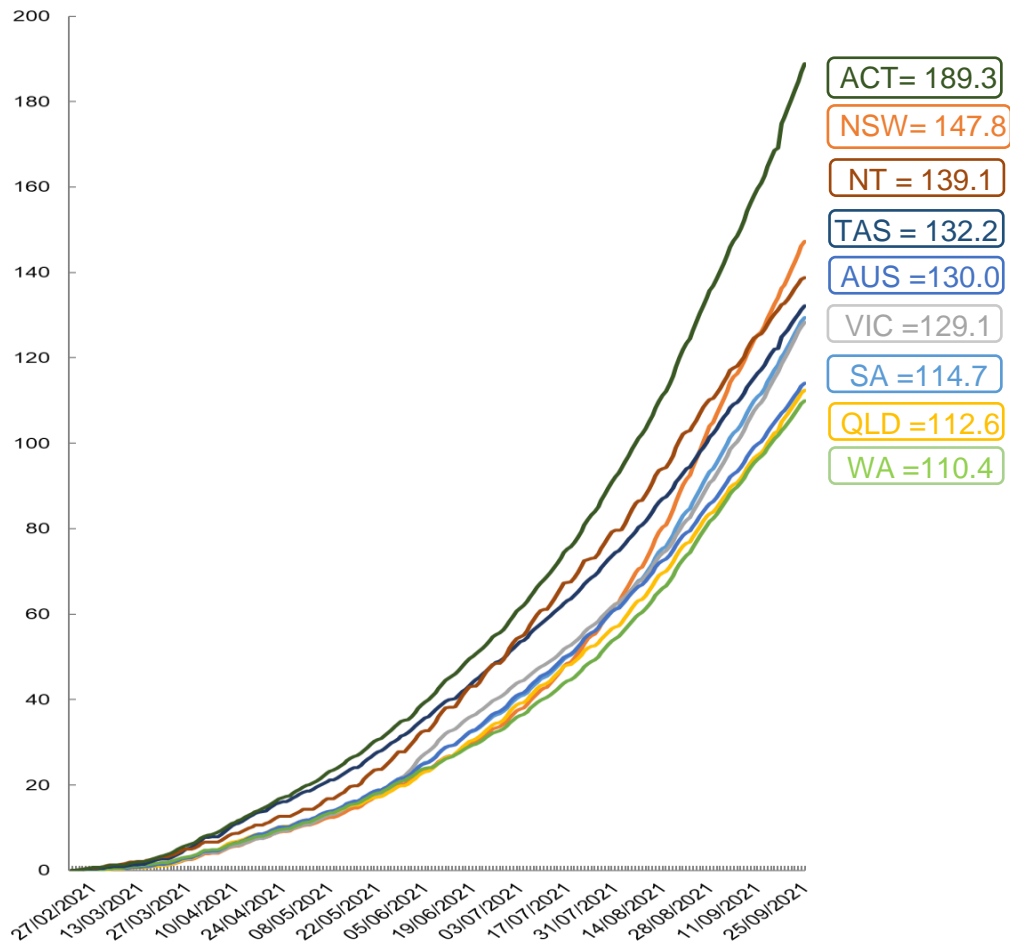
	AUS	ACT	NSW	NT	QLD	SA	TAS	VIC	WA
16 and over - dose 1	15,695,827	301,468	5,626,658	124,218	2,636,357	952,678	329,714	4,213,151	1,344,082
16 and over - dose 2	10,684,489	211,484	3,968,843	97,369	1,856,242	689,020	249,341	2,580,283	952,862
16 and over - population	20,619,959*	344,037	6,565,651	190,571	4,112,707	1,440,400	440,172	5,407,574	2,114,978
16 and over % with dose 1	76.12%	87.63%	85.70%	65.18%	64.10%	66.14%	74.91%	77.91%	63.55%
16 and over % with dose 2	51.82%	61.47%	60.45%	51.09%	45.13%	47.84%	56.65%	47.72%	45.05%
50 and over - dose 1	7,717,357	127,375	2,613,204	47,609	1,448,090	558,448	191,326	1,960,529	722,954
50 and over - dose 2	6,079,138	109,598	2,080,729	38,889	1,114,761	426,448	157,408	1,560,952	559,059
50 and over - population	8,749,703	127,802	2,807,793	62,280	1,758,855	674,384	220,036	2,211,211	885,370
50 and over % with dose 1	88.20%	>95%	93.07%	76.44%	82.33%	82.81%	86.95%	88.66%	81.66%
50 and over % with dose 2	69.48%	85.76%	74.11%	62.44%	63.38%	63.24%	71.54%	70.59%	63.14%
70 and over - dose 1	2,755,405	41,807	928,725	10,221	525,172	218,095	72,262	688,035	251,409
70 and over - dose 2	2,262,007	36,421	771,252	8,407	427,751	171,108	60,864	569,754	201,796
70 and over - population	2,934,706	39,946	962,606	12,343	577,767	240,514	77,155	743,519	280,281
70 and over % with dose 1	93.89%	>95%	93.07%	82.81%	90.90%	90.68%	93.66%	92.54%	89.70%
70 and over % with dose 2	77.08%	91.18%	80.12%	68.11%	74.04%	71.14%	78.89%	76.63%	72.00%
12 to 15 - dose 1	354,367	7,150	161,020	3,705	49,109	9,524	2,809	105,234	13,732
12 to 15 - dose 2	19,453	494	10,251	1,024	3,574	358	368	2,640	588
12 to 15 - population	1,243,990	19,693	390,330	13,060	270,146	82,747	26,308	308,611	132,869
12 to 15 % with dose 1	28.49%	36.31%	41.25%	28.37%	18.18%	11.51%	10.68%	34.10%	10.33%
12 to 15 % with dose 2	1.56%	2.51%	2.63%	7.84%	1.32%	0.43%	1.40%	0.86%	0.44%

*National population will not equal sum of listed jurisdictions due to a small number of people counted in national population residing in some 'other' territories. Sum of state doses will not add to national total as some records are unable to be geocoded to a State or Territory.

Doses sourced from Australian Immunisation Register, population from ABS ERP June 2020

Vaccinations by location

Cumulative total doses administered vs state populations*

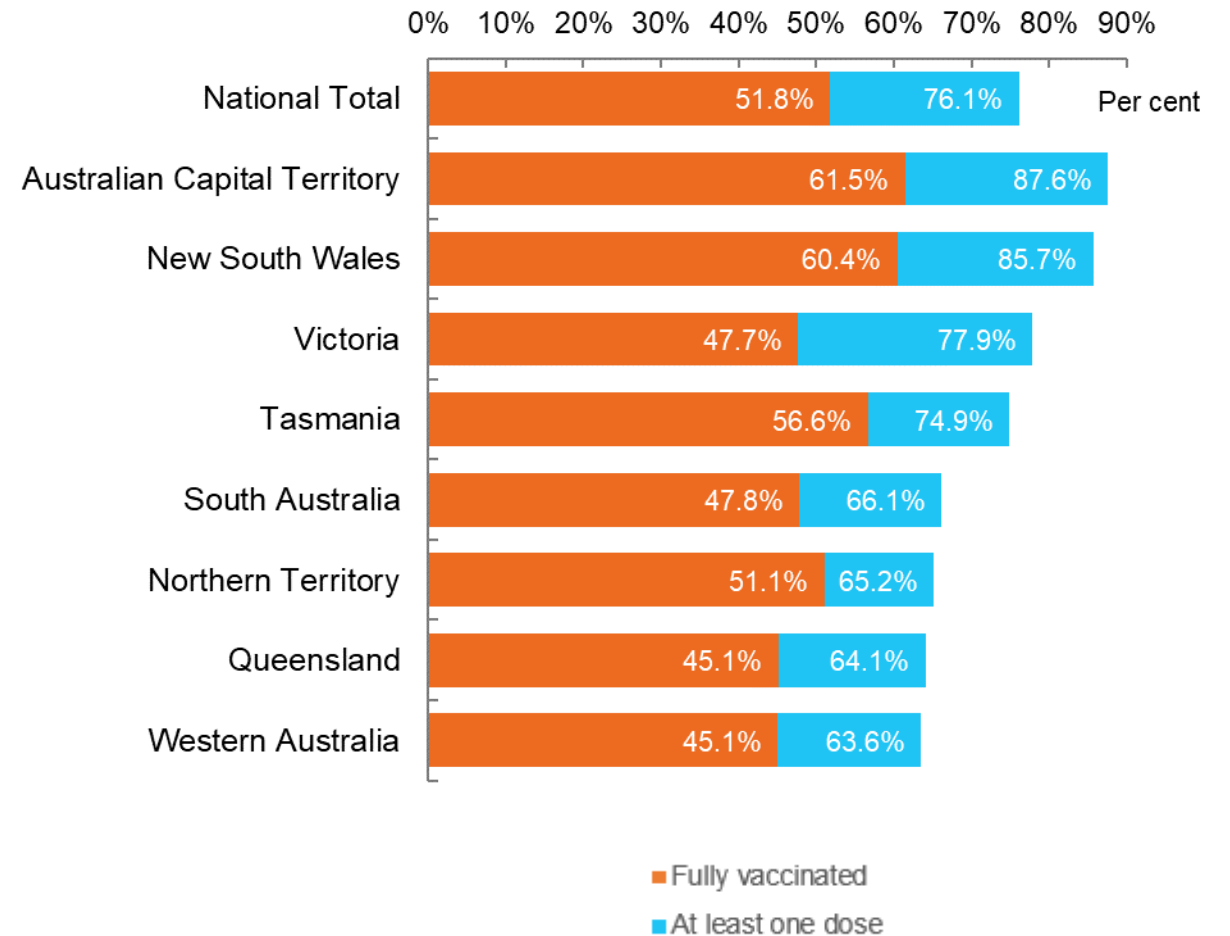


*Not an indication of percentage vaccinated, numbers will exceed 100 due to multiple doses required per person of the population

Data as at:
26 Sept 2021

Australia's COVID-19
Vaccine Roadmap

First and Second Doses by state of residence



Aboriginal and Torres Strait Islander peoples

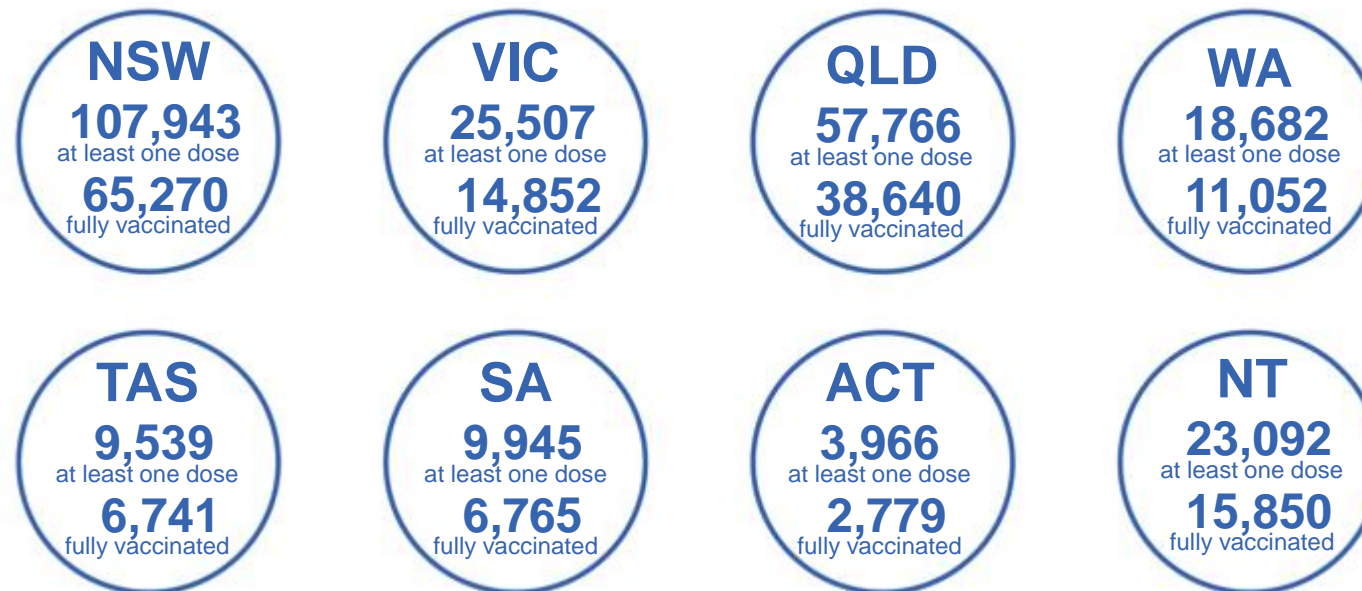
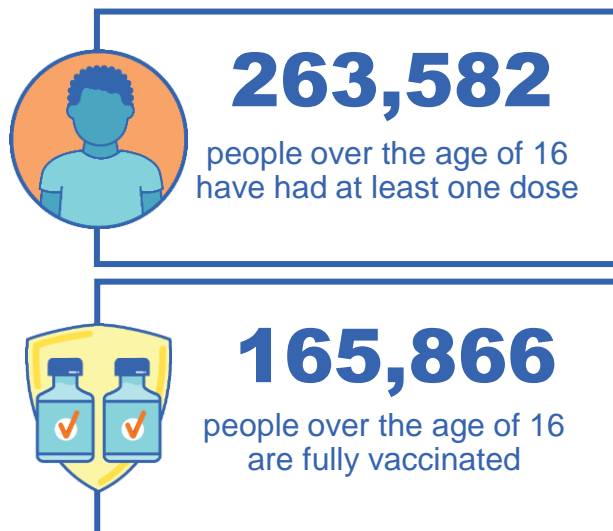
Number of people vaccinated

Data as at:
26 Sept 2021
Updated weekly

Australia's COVID-19
Vaccine Roadmap

167 Aboriginal community controlled health services (ACCHS)

0#	48	26	39	12	3	21	18
ACT	NSW	NT	QLD	SA	TAS	VIC	WA



7,142 people with at least one dose
3,917 people fully vaccinated

residing in other territories or with missing residential information

Source: Australian Immunisation Register

*Identifying as Aboriginal and Torres Strait Islander is optional and the estimated population may be under reported.

**Includes all Aboriginal and Torres Strait Islander peoples who have received a vaccination, not limited to those administered in an ACCHS setting

***Updated weekly.

#ACCHS in the ACT are currently operating as a Commonwealth Vaccine Clinics so not included to avoid double counting

Data as at:
26 Sept 2021

Commonwealth primary care



Primary care vaccine administration sites

5,506	137	167	3,233
GPs	CVCs	ACCHS	Pharmacies



14,416,986 total vaccine doses administered primary care settings as at 26 September
+ 56,751 recorded in the last 24 hours

Primary care vaccinations by provider type

	Doses administered	Daily increase	7 day increase
General Practice* includes other Commonwealth	13,725,691	50,802	1,004,873
Pharmacy	691,295	5,949	113,408

NSW
5,820,222
(+22,472 daily increase)

VIC
3,414,873
(+18,405 daily increase)

QLD
2,539,530
(+8,562 daily increase)

WA
1,136,555
(+3,358 daily increase)

TAS
250,069
(+382 daily increase)

SA
844,760
(+1,990 daily increase)

ACT
243,753
(+1,475 daily increase)

NT
89,171
(+42 daily increase)

78,053 doses administered to persons residing in other territories or with missing residential information

*General practice includes Commonwealth Vaccination Clinics, Aboriginal Community Health Centres, Royal Flying Doctor Service and other Commonwealth vaccination facilities

Source: Australian Immunisation Register

Data as at:
26 Sept 2021

Commonwealth aged care and disability doses administered



968,805

(+ 2,398 last 24 hours)

Total vaccine doses administered in aged care and disability facilities as at 26 September

Number of doses administered as part of the Commonwealth aged and disability care rollout

NSW
452,500
(+781 daily increase)

VIC
178,708
(+451 daily increase)

QLD
161,330
(+968 daily increase)

WA
62,892
(+31 daily increase)

TAS
16,611
(+14 daily increase)

SA
56,347
(+146 daily increase)

ACT
11,496
(+94 daily increase)

NT
5,609
(+9 daily increase)

*Sourced from the Australian Immunisation Register. Includes all persons vaccinated at participating residential aged care, disability and related industry settings.

**State level breakdown indicates the residential location and may not align to the state in which the vaccination occurred.

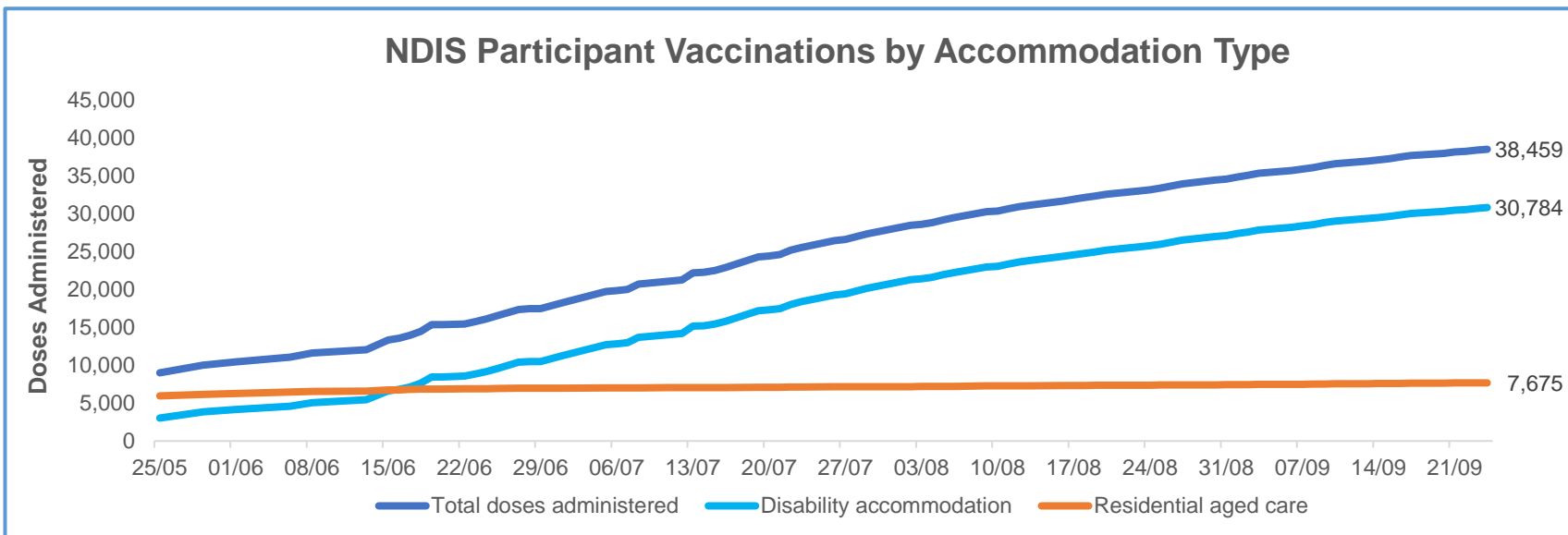
23,312

doses administered to persons residing in other territories or with missing residential information

Data as at:
24 September 2021*

Vaccination rate of people with disability and the disability workforce

Phase 1a – People with disability living in shared accommodation



	Total people with at least one dose	People fully vaccinated	Total number of individuals in cohort	Total doses administered	% People with at least one dose	% People fully vaccinated
NDIS participants living in shared accommodation **	20,432	18,027	27,293	38,459	74.9%	66.0%
NDIS screened workers ***	143,194	112,790	196,947	255,984	72.7%	57.3%

* Updates are available Monday to Friday on participants, and bi-weekly for workers, numbers may be up to four days old.

** Shared accommodation means two or more people with disability living in shared residential accommodation and NDIS participants living in Residential Aged Care accommodation as per the eligibility criteria of Phase 1a.

*** Total number of workers within the NDIS Commission Worker Screening database who have ever been successfully screened and linked to an NDIS registered provider or participant.

Source: Linkage between National Disability Insurance Agency data, NDIS Quality and Safeguards Commission data and the Australian Immunisation Register.



Residential aged care vaccination rollout

Residential aged care facilities status

100% Commonwealth facilities visited (2,573 planned sites)

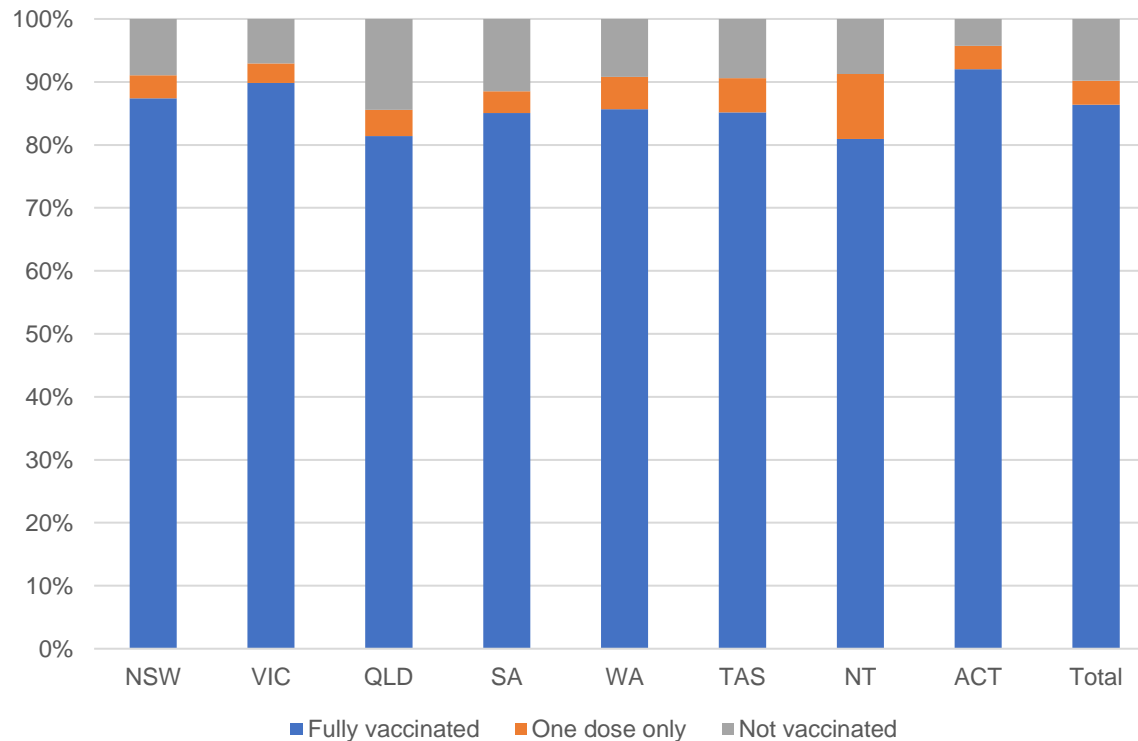
160,956 People fully vaccinated

90.2% Participation rate

Australia's COVID-19 Vaccine Roadmap

Data as at:
26 Sept 2021

Aged care resident vaccinations



Aged care worker vaccinations

Jurisdictions	Total workers with at least one dose	Workers fully vaccinated	% Workers with at least one dose	% Workers fully vaccinated
NSW	78,922	67,097	99.1%	84.3%
VIC	70,663	59,634	98.8%	83.4%
QLD	47,532	37,550	99.0%	78.2%
SA	26,524	22,133	99.0%	82.6%
WA	23,196	17,243	99.3%	73.8%
TAS	7,463	6,256	99.5%	83.4%
NT	797	762	99.3%	94.9%
ACT	2,940	2,576	99.8%	87.4%
Total	258,037	213,251	99.0%	81.8%

Source: My Aged Care Portal staff vaccination progress

**Resident vaccination information is reported manually by service providers

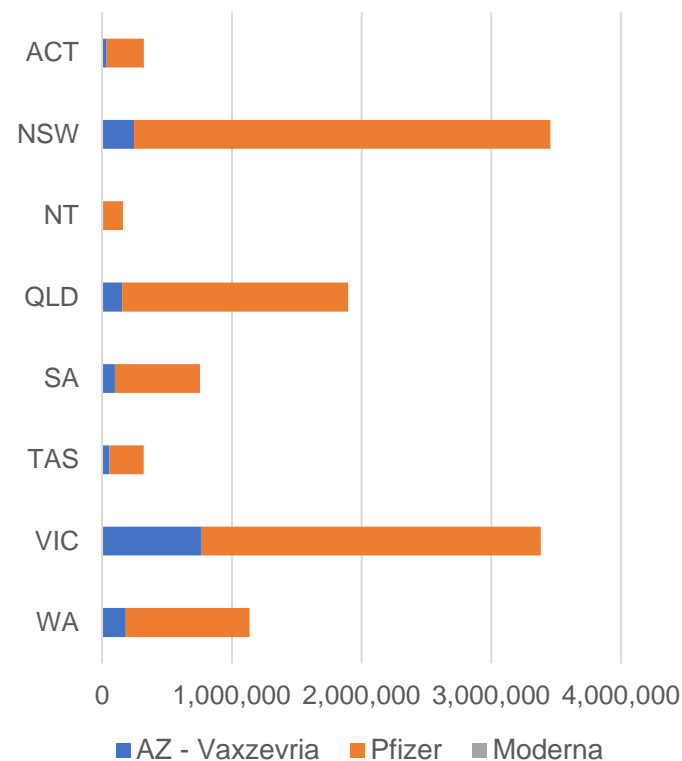
*Status updates are provided by facilities at least once per week. Reporting is updated Monday to Friday to encompass different facility updates being made on different days.

Data is sourced directly from Aged Care Service Providers and is not drawn or closely aligned with data from AIR due to inconsistencies and potential lags in uploading of records.

Data as at:
26 Sept 2021

Jurisdiction administered

Total vaccine doses administered in State and Territory clinics as at 26 September



11,420,552 total vaccine doses administered
in State and Territory clinics as at 26 September
+ **86,233** recorded in the last 24 hours
+ **845,226** recorded in the last 7 days

NSW
3,454,848
(+17,651 daily increase)

VIC
3,380,892
(+30,539 daily increase)

QLD
1,895,581
(+17,093 daily increase)

WA
1,137,466
(+7,578 daily increase)

TAS
320,428
(+2,092 daily increase)

SA
754,393
(+6,213 daily increase)

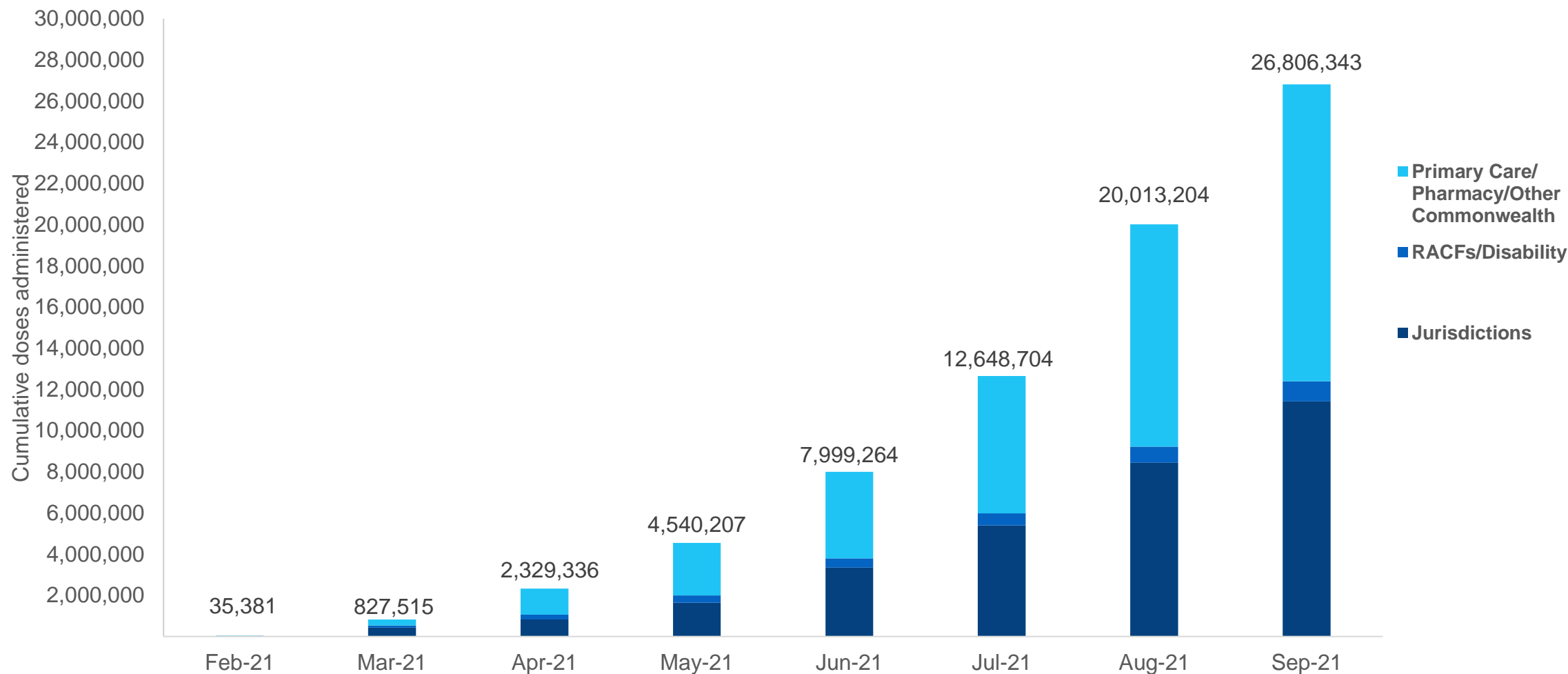
ACT
316,597
(+4,348 daily increase)

NT
160,347
(+719 daily increase)

*Sourced from the Australian Immunisation Register and self-reported data. Numbers are calculated as difference in daily cumulative reported numbers to allow for historical corrections in all self-reported data sources.

Cumulative doses administered by channel

Data as at:
26 Sept 2021



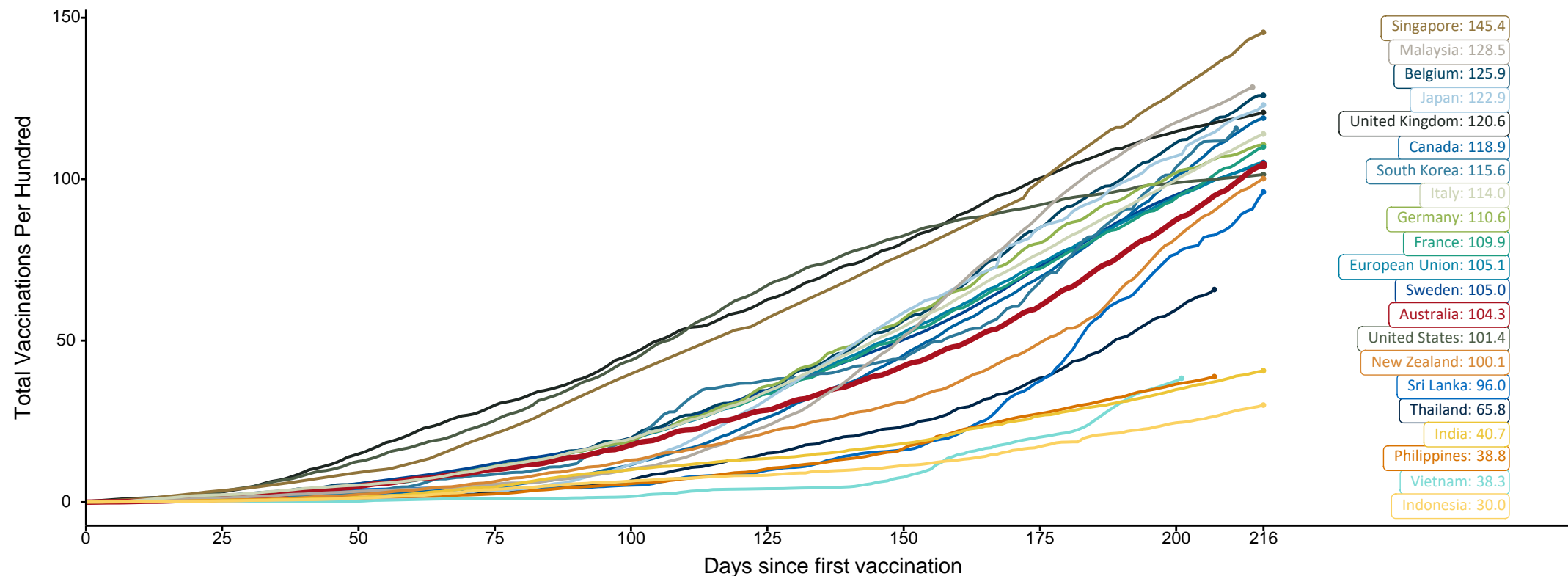
Source: Australian Immunisation Register

Doses at equivalent stages of rollout (Day 216)

Data as at:
26 Sept 2021

The x-axis is truncated at the length of Australia's vaccination program. Countries with intermittent reporting have had their doses per 100 imputed to Australia's current stage of rollout. Israel excluded as it is beyond scale of the graph

Cumulative doses administered (26 Sep): **26,806,343**

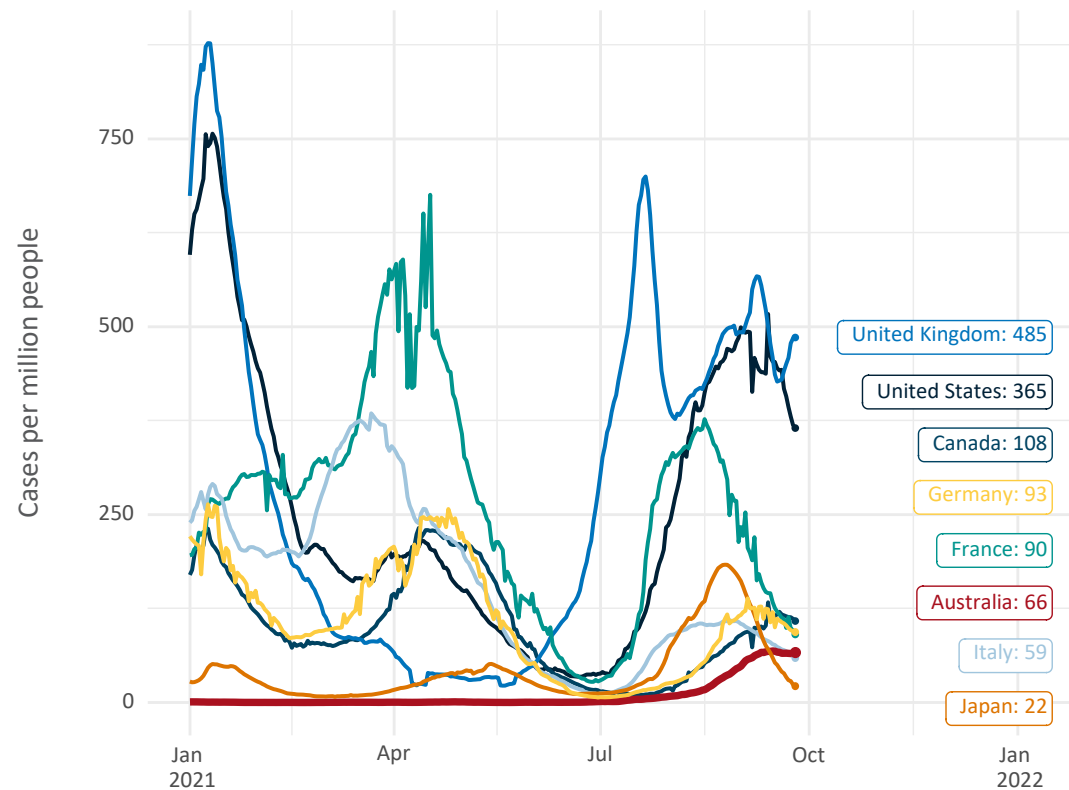


Note: From 15 September 2021, data for Australia includes all doses administered to people 12 and over. Prior to 15 September, data was for 16 and over
Source: Department of Health (Australia), Our World in Data (international)
Latest data: 26 September

Data as at:
26 Sept 2021

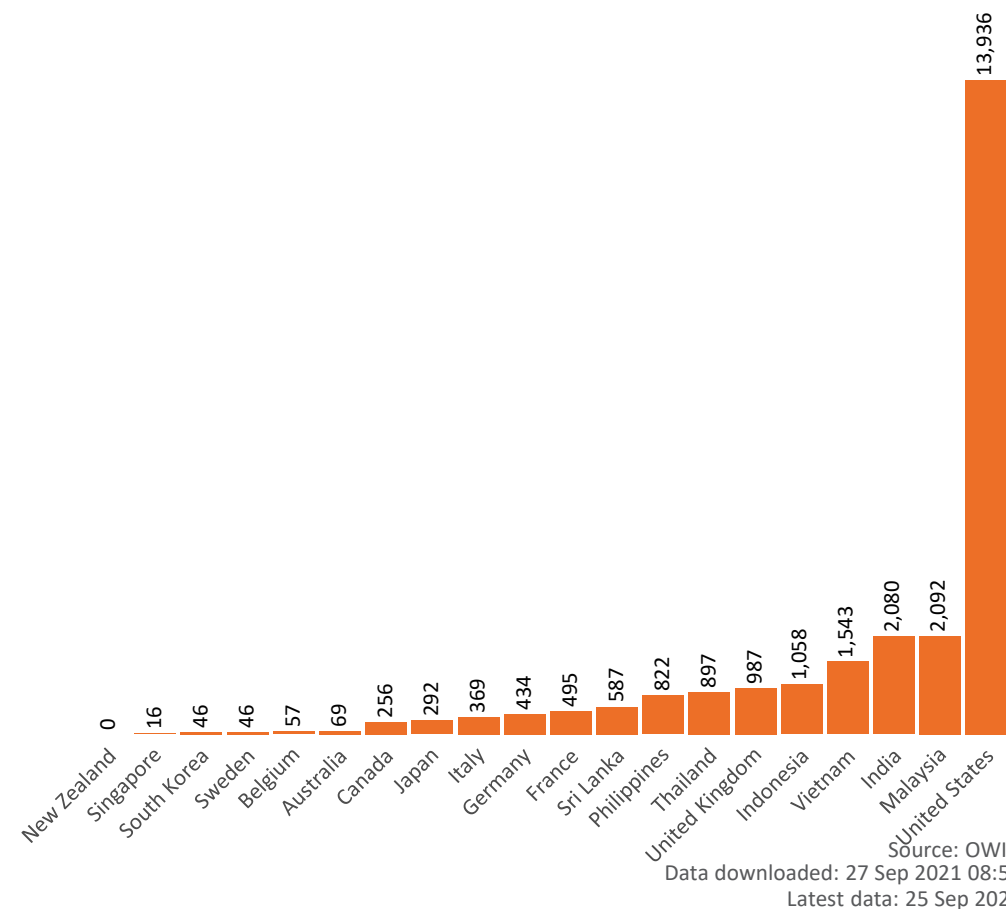
International data – COVID-19

New daily cases per million in 2021, Australia and G7 countries
Smoothed - 7 day average



Source: OWID
Data downloaded: 27 Sep 2021 08:59
Latest data: 25 Sep 2021

COVID-19 deaths in past 7 days - Australia and select countries



Source: OWID
Data downloaded: 27 Sep 2021 08:59
Latest data: 25 Sep 2021

Pandemic Response Payments

Australia's COVID-19
Vaccine Roadmap

Data as at midnight:
26 Sep 2021



2.16 million

People have received at least one COVID
Disaster Payment (including ISP200)

\$9.29 billion

Paid Out as at 26 Sep 2021

3.70 million

Claims granted across
three different payments



93%

of Claims
Received Digitally



COVID Disaster Payment:

3.63 million claims received - 2.00 million individuals paid a total of \$9.02 billion.

\$200 Income Support Payment:

224,000 claims received - 164,000 individuals paid a total of \$172.19 million.

Pandemic Leave Disaster Payment:

71,000 claims received - 61,000 individuals paid a total of \$97.24 million.



**THREE
PAYMENTS
AVAILABLE**

COVID Disaster Payment

assisting during a lockdown
event in a Commonwealth
hotspot.

Income Support Payment \$200

for income support
recipients who lost at
least 8 hours of work.

Pandemic Leave Disaster Payment

for those who have
to self-isolate,
quarantine or care.

For more information visit:
servicesaustralia.gov.au

COVID-19 DISASTER PAYMENTS

New South Wales

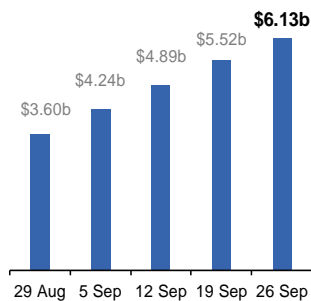
Active lockdown since 24 Jun

**1.05m people have
received at least one
COVID Disaster Payment.**

**\$6.13b paid out as at
26 Sep 2021.**

**\$613m paid in initial and
reoccurring payments in the
week ending 26 Sep 2021.**

Cumulative payments made by State since
activation on 1 Jul 2021.



Victoria

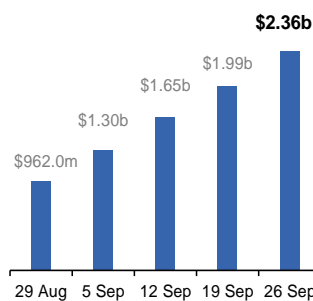
Active lockdown (#6) since 6 Aug

**597,000 people have
received at least one
COVID Disaster Payment.**

**\$2.36b paid out as at
26 Sep 2021.**

**\$378m paid in initial and
reoccurring payments in the
week ending 26 Sep 2021.**

Cumulative payments made by State since
activation on 8 Jun 2021.



Australian Capital Territory

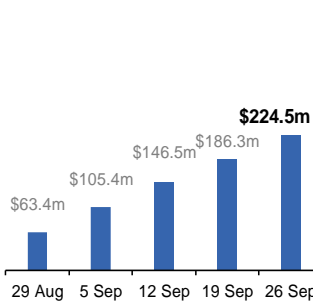
Active lockdown since 12 Aug

**63,000 people have
received at least one
COVID Disaster Payment.**

**\$224.5m paid out as at
26 Sep 2021.**

**\$38m paid in initial and
reoccurring payments in the
week ending 26 Sep 2021.**

Cumulative payments made by State since
activation on 20 Aug 2021.



Northern Territory

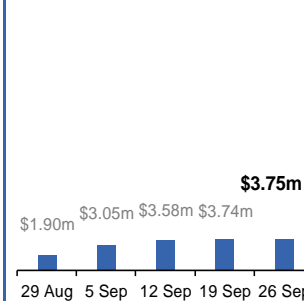
Lockdown from 18 – 20 Jul
Claiming period ends 13 Sep

**5,780 people have
received at least one
COVID Disaster Payment.**

**\$3.75m paid out as at
26 Sep 2021.**

**\$7,000 paid in initial
payments in the week
ending 26 Sep 2021.**

Cumulative payments made by State since
activation on 25 Aug 2021.



Queensland

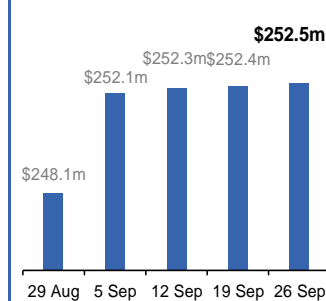
Lockdown from 31 Jul – 11 Aug
Claiming period ended 28 Aug

**196,000 people have
received at least one
COVID Disaster Payment.**

**\$252.5m paid out as at
26 Sep 2021.**

**\$40,000 paid in initial
and reoccurring payments in the
week ending 26 Sep 2021.**

Cumulative payments made by State since
activation on 7 Aug 2021.



South Australia

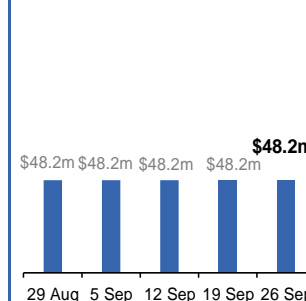
Lockdown from 21 – 27 Jul
Claiming period ended 17 Aug

**86,000 people have
received at least one
COVID Disaster Payment.**

**\$48.2m paid out as at
26 Sep 2021.**

**\$2,000 paid in initial
payments in the week
ending 26 Sep 2021.**

Cumulative payments made by State since
activation on 28 Jul 2021.



Administration and Utilisation

Doses as at Week 31

	Ordered	Available	Administered	Available minus Administered	Estimated Dose Utilisation %
	Up to Week 31	Delivered up to Week 30 plus redistributions	Up to Week 31		(see note)
NSW	4,035,940	3,798,430	3,454,848	343,582	Fully utilised
VIC	3,811,246	3,607,700	3,380,892	226,808	Fully utilised
QLD	2,399,230	2,141,620	1,895,581	246,039	99%
WA	1,334,428	1,196,428	1,137,466	58,962	Fully utilised
SA	1,000,830	860,710	754,393	106,317	98%
TAS	358,780	344,740	320,428	24,312	Fully utilised
NT	229,904	207,046	160,347	46,699	87%
ACT	339,098	310,658	316,597	-	Fully utilised
Jurisdiction delivered total	13,509,456	12,467,332	11,420,552	1,046,780	Fully utilised
Commonwealth Aged Care & Disability	994,810	978,172	968,805	9,367	N/A
Commonwealth Primary Care & Other	20,233,826	18,471,522	14,416,986	4,054,536	88%
Total	34,738,092	31,917,026	26,806,343	5,110,683	94%

About this data

- Ordered – Total doses delivered to sites. Based on logistics provider data. This figure includes doses allocated for administration in the coming week.
- Available – total doses that could have been administered to date, less doses re-distributed from States & Territories to Primary Care or Aged Care & Disability (i.e. does not include those deliveries recently received, and intended for use in the coming week).
- Administered – Doses administered as at 26 September 2021.
- The dose utilisation is calculated based on the total doses administered and a small % wastage in line with international standards in relation to total available doses.
- For Aged Care & Disability, the doses available for administration is for the full period (Weeks 1-31).
- Aged Care & Disability utilisation is not provided as the in-reach rollout is demand-based, with vaccines ordered based on resident numbers.